

Asia Pacific Region Only



PARTS LIST

INTRAAX® AANT Trailer Suspension

LIT NO: 97114-112

DATE: February 2024

REVISION: H





TABLE OF CONTENTS

INTRODUCTION	3
ABBREVIATIONS	3
AXLE AND SUSPENSION IDENTIFICATION	4
AXLE ID PLATE	4
MANUFACTURING PLANT IDENTIFIER	4
DATE OF MANUFACTURE	4
MANUFACTURING SEQUENCE NUMBER	4
SUSPENSION ASSEMBLY NUMBER PLATE	5
ASSEMBLY NUMBER	5
RIDE HEIGHT LABEL	5
AXLE ASSEMBLY	6
HALFTRAAX™ ASSEMBLY COMPONENTS	6
HALFTRAAX SPINDLE IDENTIFICATION	6
FRAME HANGER IDENTIFICATION	7
FRAME HANGER & PIVOT	8
AIR SPRINGS	10
AIR SPRING IDENTIFICATION	10
AIR SPRINGS & HARDWARE	11
SHOCK ABSORBERS & HARDWARE	12
HEIGHT CONTROL VALVE	14
HCV SYSTEM IDENTIFICATION	14
HEIGHT CONTROL VALVE	15
AXLE LIFT SYSTEM HARDWARE	16
UBL™ KIT - EARLY, UP TO 2018	16
UBL™ KIT - LATE, FROM 2018	17
AXLE LIFT SYSTEM CONTROL	18
LIFT AXLE CONTROL VALVE	19
SPECIAL TOOLS	21
REVISIONS TABLE	22

Document Interactivity

The interactive **Table of Contents** allows users to quickly navigate to the appropriate page with a single mouse click. The **INDEX** button at the bottom of each page returns you to the **Table of Contents**. Other links within the document are identified by black underlined text, whereas links to external websites are identified by blue underlined text.



INTRODUCTION

The purpose of this parts list is to document the available repair parts, accessories, special tools and lubricants available for the Hendrickson AANT230 INTRAAX® (Integrated Axle Assembly) suspension system.

The major components included in this parts list is as follows:

- AANT230 INTRAAX Axle Assemblies (HALFTRAAX™)
- Air springs, relevant mounting hardware and fasteners
- Shock Absorbers, relevant mounting hardware and fasteners
- Frame Hangers
- QUIK-ALIGN® hardware and fasteners
- Height Control Valve (HCV) system
- Axle lift system

Parts published in this parts bulletin are the latest available parts. Unless otherwise noted, they are functionally equivalent to, or better than, the originally supplied components.

This parts list should be used in conjunction with:

- [97114-100](#) Trailer Wheel End Systems Parts List
- [97114-097](#) Trailer Brake Systems Parts List

NOTE: All quantities listed within this parts list are as applicable for a single axle.

ABBREVIATIONS

Abbreviations used in this document may include the following terms:

- AR – As Required
- ARL – Auxiliary Rebound Limiter
- Assy – Assembly
- HCV – Height Control Valve
- NSS – Not Serviced Separately
- NZ – New Zealand
- PCD – Pitch Circle Diameter
- TFB™ – TRI-FUNCTIONAL™ Bush
- UBL™ – UNDER BEAM LIFT™ Axle Lift System

AXLE AND SUSPENSION IDENTIFICATION

To assist with the identification of an INTRAAX® axle or suspension system, reference should be made to the axle identification plate (refer to [Figure 1](#)) and suspension assembly number plate (refer to [Figure 2](#)).



Figure 1: Axle ID Plate



Figure 2: Assembly Plate

AXLE ID PLATE

The axle ID plate is usually located on the inboard side of the left-hand trailing arm and provides the following:

- MODEL
- DESCRIPTION
- CUSTOMER PART NUMBER
- AXLE SERIAL NUMBER
- AXLE CAPACITY

The axle serial number (e.g. SK1804270629) provides the following details:

MANUFACTURING PLANT IDENTIFIER

The first two digits of the axle serial number identify the manufacturing plant that originally manufactured the HALFTRAAX™ Assembly as follows:

- SK – Somerset Kentucky
- LI – Lebanon Indiana
- CO – Canton Ohio

DATE OF MANUFACTURE

The third to eighth digits of the axle serial number identify the date the HALFTRAAX Assembly was manufactured in date format: Year - Month - Date. For example, the code 180427 shows that it was manufactured on 27 April 2018.

MANUFACTURING SEQUENCE NUMBER

The final four digits (e.g. 0629) of the axle serial number provide the manufacturing sequence number.

SUSPENSION ASSEMBLY NUMBER PLATE

The suspension assembly number plate is usually located on the inboard side of the right-hand trailing arm. It indicates that the suspension has been assembled in Australia and provides the following:

- RIDE HEIGHT
- ASSEMBLY PART NUMBER
- DATE OF ASSEMBLY

ASSEMBLY NUMBER

The first six digits of the assembly part number identify the suspension system base model, while the remaining digits identify specific options such as wheel end and brake system configuration.

Base Model Identification

Manufacturer (Digit 1)	TRI-FUNCTIONAL™ Bush Width (Digit 2)	Load Capacity (Digit 3 & 4)	Model (Digit 5)	Specific Option Code (Digit 6)	Tyre Pressure Control (Digit 7)
H= Hendrickson	N = Narrow 3 Inch (76.2 mm)	23 = 23,000 lbs (10,430 kg)	T = Top Mount	See below.	C = None P = TIREMAAX™ PRO

Specific Option Code (Digit 6)

SOC	Axle Track	Brake Type	Spindle type	Axle Diameter
F	73 Inch	15 Inch Drum	HN – Tapered	5 Inch
K	73 Inch	16.5 Inch Drum	HN – Tapered	5.75 Inch (LDA)
L	73 Inch	16.5 Inch Drum	HP – Parallel	5.75 Inch (LDA)
M	73 Inch	377 & 430 mm Disc	HN – Tapered	5.75 Inch (LDA)
V	73 Inch	415 mm MAXX22T Disc	HP – Parallel	5.75 Inch (LDA)
X	83.5 Inch	430 mm Disc	HP – Parallel	5.75 Inch (LDA)

RIDE HEIGHT LABEL

The ride height label (refer to Figure 3) is usually affixed to the trailer frame, and provides an additional means of identification for an INTRAAX® axle or suspension system, as well as confirming system ride height for service purposes.

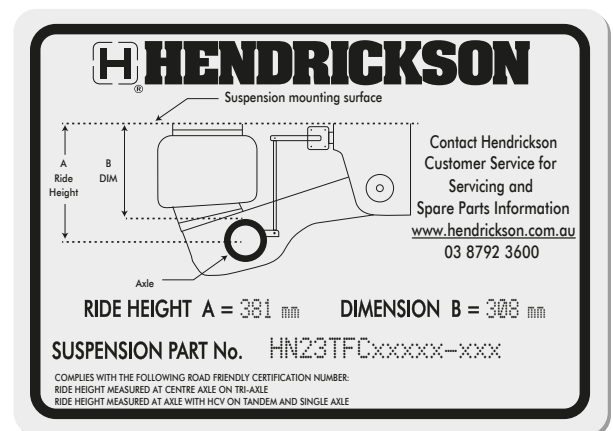


Figure 3: Ride Height Label

AXLE ASSEMBLY

If a replacement HALFTRAAX™ assembly is needed, collect all details from axle identification and assembly plates and then contact Hendrickson customer service who recommend the best and most suitable components to suit your application.

HALFTRAAX™ ASSEMBLY COMPONENTS

All replacement AANT Drum Brake HALFTRAAX™ axle assemblies are supplied complete with the following components:

- TRI-FUNCTIONAL™ Bushes
- S-Cams and tubes
- Air spring pedestals
- Brake anchor pins and bushes

Refer to [Figure 4](#) or detailed view of the AANT drum brake HALFTRAAX assembly as supplied.

All replacement AANT Disc Brake HALFTRAAX axle assemblies are supplied complete with the following components:

- ABS Brake Sensor Locating Bush
- TRI-FUNCTIONAL Bushes (TFB)
- Air spring pedestals (if applicable)

Refer to [Figure 5](#) or detailed view of the AANT disc brake HALFTRAAX assembly as supplied.

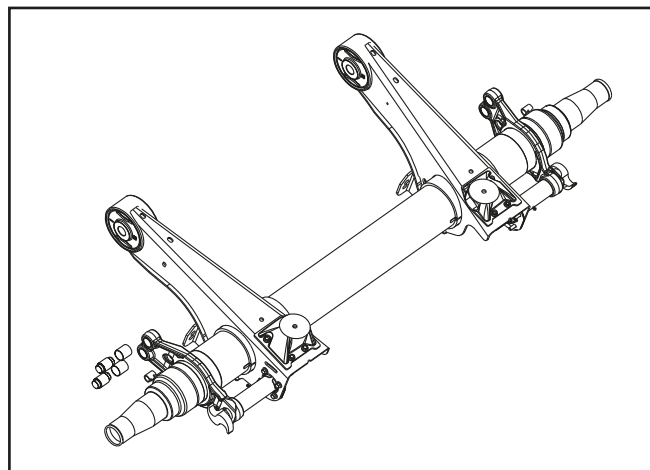


Figure 4: Drum Brake HALFTRAAX

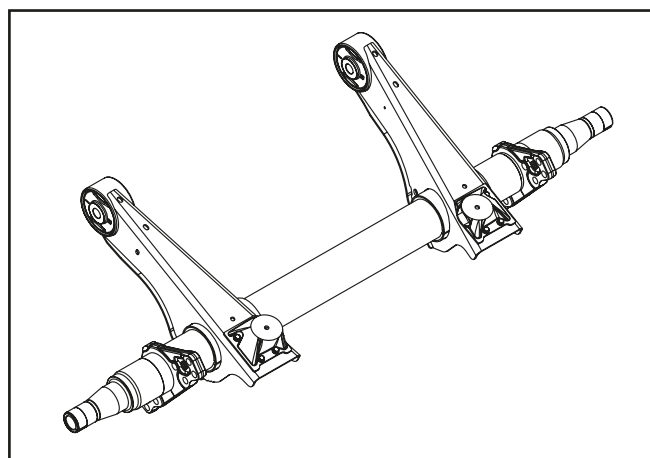


Figure 5: Disc Brake HALFTRAAX

NOTE: Most new HALFTRAAX axle assemblies are the latest design 5.75-inch Large Diameter Axle (LDA). They have severe service camshaft tubes (if drum brake) and are a direct replacement for earlier 5 inch axles. However, if using clamp on brake dust shields, they will need to be updated, to suit the 5.75 inch axles.

All HALFTRAAX assemblies for 12-inch ride height are supplied pre-drilled to mount the air spring directly to the beam and do not include/require air spring pedestals.

HALFTRAAX SPINDLE IDENTIFICATION

AANT INTRAAX suspension systems are available with HN (Tapered) and HP (Parallel) type spindles. *Refer to Figure 6.*

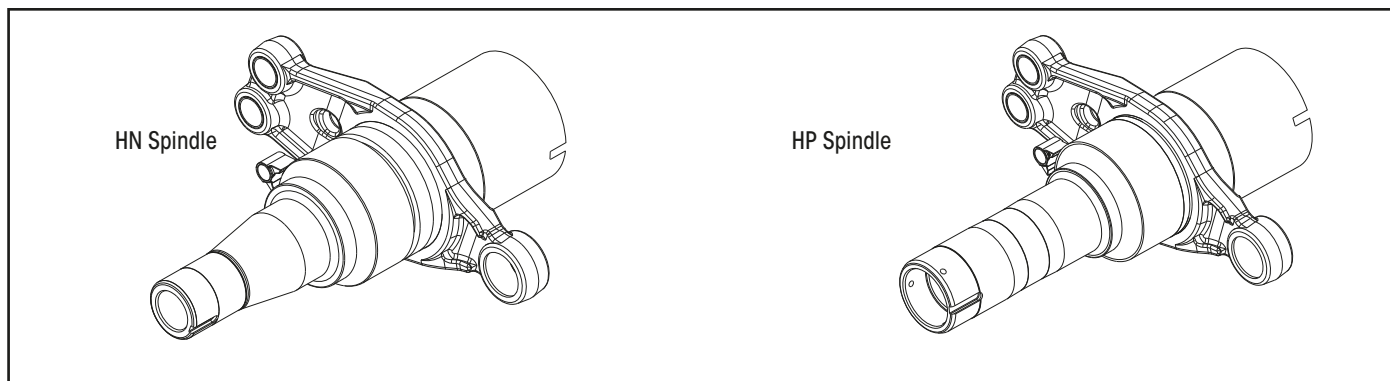


Figure 6: HN Tapered Spindle and HP Parallel Spindle

HALFTRAAX Number	Description	Notes
E1INTSUSP.3576	HALFTRAAX™ AANT230 73" Track 415 mm MAXX22T Disc HP LDA	Except 12" RH
E1INTSUSP.3517	HALFTRAAX AANT230 73" Track 377/430 mm Disc HN LDA	Except 12" RH
98544-175		12" RH
E1INTSUSP.3500	HALFTRAAX AANT230 73" Track 15" Drum HN 5"	Except 12" RH
98544-121		12" RH
E1INTSUSP.3421	HALFTRAAX AANT230 73" Track 16.5" Drum HN LDA	Except 12" RH
98544-161		12" RH
E1INTSUSP.3571	HALFTRAAX AANT230 73" Track 16.5" Drum HP LDA	Except 12" RH
E1INTSUSP.3627	HALFTRAAX AANT230 83.5" Track 430 mm Disc HP LDA	

FRAME HANGER & PIVOT

FRAME HANGER IDENTIFICATION

To determine the applicable frame hanger for a specific suspension, the hanger 'drop' will often need to be determined.

Frame drop is the measurement in millimetres from the underside of the trailer frame to the centre of the pivot bolt hole. Refer to dimension A in [Figure 7](#).

Frame hangers are available in a tapered configuration. Refer to [Figure 8](#).

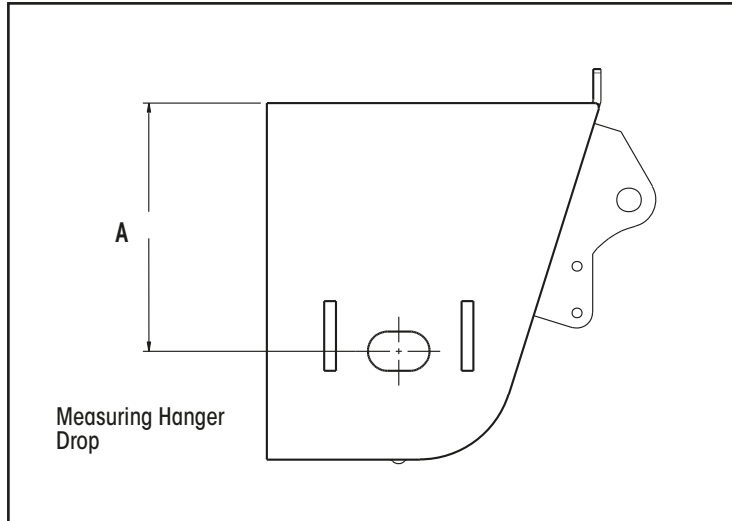


Figure 7: Framer Hanger Drop Identification

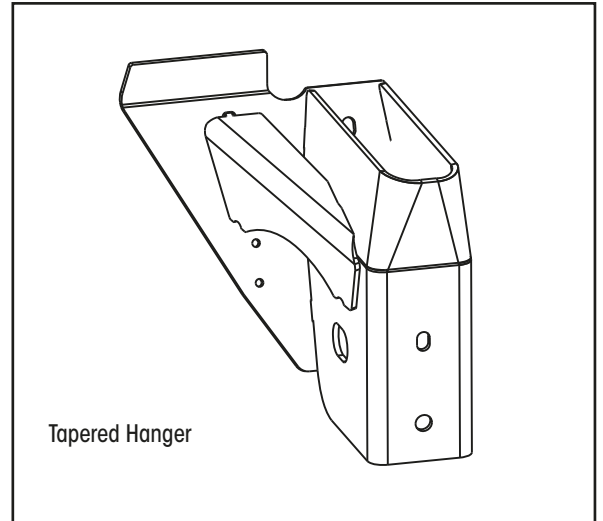
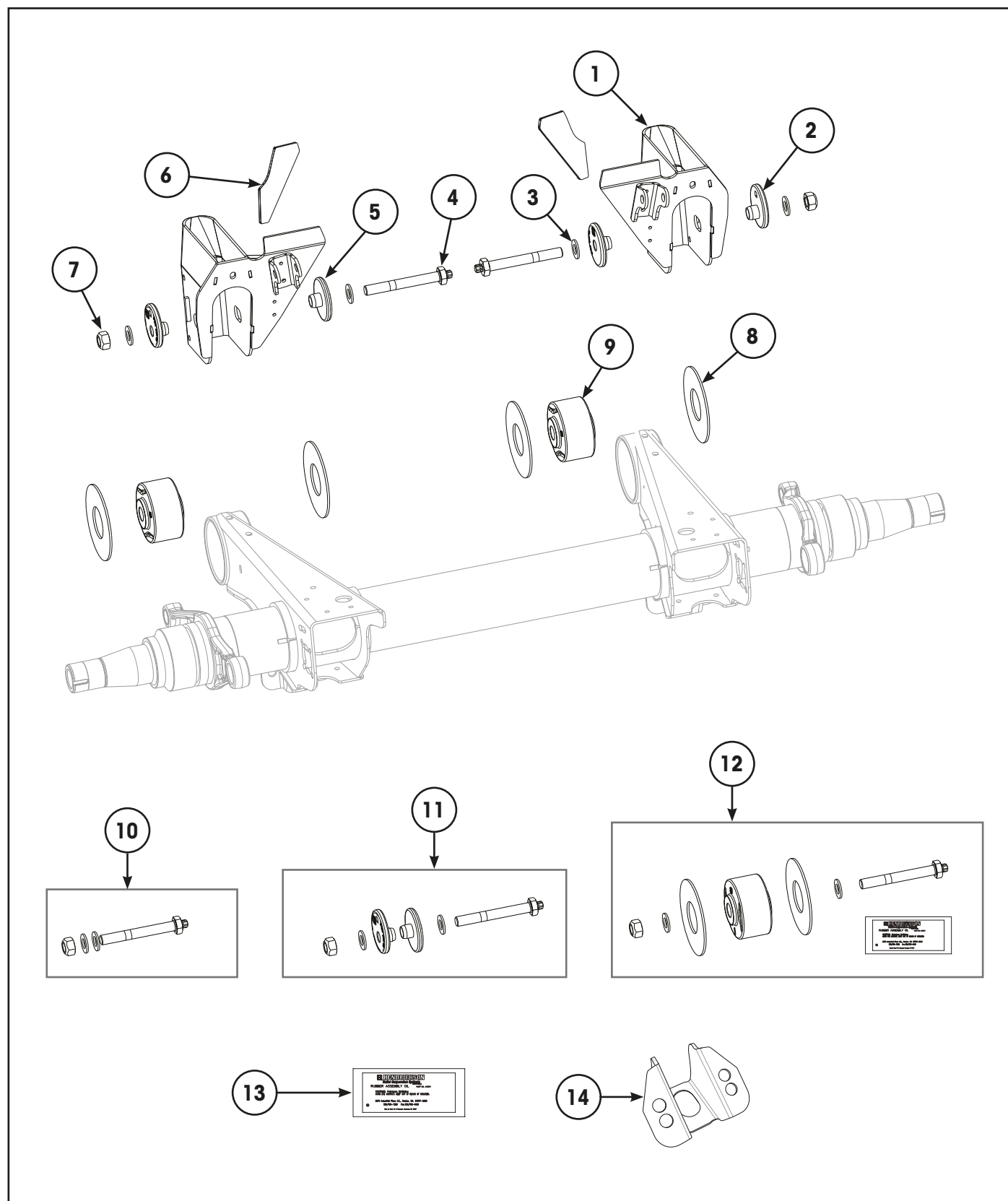


Figure 8: Tapered Hanger Identification

FRAME HANGER & PIVOT





FRAME HANGER & PIVOT

Item	Part Number	Description	Qty	Notes
1	S-28400-1R	Frame Hanger, RH – Tapered [1]	1	203 mm drop. Refer “Frame Hanger Identification” on page 7. 12, 13.5”, 14”, 15” standard travel & 15” liftable.
	S-28400-1L	Frame Hanger, LH – Tapered [1]	1	
	S-28400-2R	Frame Hanger, RH – Tapered [1]	1	254 mm drop. Refer “Frame Hanger Identification” on page 7. 16” & 17” standard & liftable & 15” high control.
	S-28400-2L	Frame Hanger, LH – Tapered [1]	1	
	S-28400-3R	Frame Hanger, RH – Tapered [1]	1	305 mm drop. Refer “Frame Hanger Identification” on page 7. 19” standard travel.
	S-28400-3L	Frame Hanger, LH – Tapered [1]	1	
2	C-20925	Flanged washer, Outer – QUIK-ALIGN®	2	Eccentric.
3	NSS	Washer, Hardened – 7/8	4	Use item 10, 11 or 12.
4	NSS	Shear Bolt – QUIK-ALIGN	2	Use item 10, 11 or 12.
5	C-20924	Flanged Washer, Inner – QUIK-ALIGN	2	Concentric.
6	S-27330	Gusset, Frame Hanger	2	
7	NSS	Nut, Prevailing Torque – 7/8 UNC	2	Use item 10, 11 or 12.
8	S-26807-4P	Kit, Wear Bushing	1	
9	NSS	Bush, TRI-FUNCTIONAL™	2	[2] Use item 12.
10	S-31621	Kit, Pivot Bolt	2	Includes items 3, 4 & 7.
11	S-31628	Kit, QUIK-ALIGN	2	Includes items 2, 3, 4, 5 & 7.
12	S-31622	Kit, TRI-FUNCTIONAL Bush	1	[2] Includes items 3, 4, 7, 8, 9 & 13
13	A-14011	Lube Pack – TRI-FUNCTIONAL™ Bush	2	
14	S-39879-1	Brake Chamber Mount	2	

[1] Hanger Repair Kits: Two hanger repair kits are available to assist with repair of cracked, worn or gouged hangers. Depending on the damage involved it may be possible to use one of these kits instead of replacing the entire hanger. For more details refer to Hendrickson [Technical Bulletin 97117-101](#).

- 98690-003 is for worn or gouged hangers. Includes pivot bolt kit, S-31628.
- 98544-024 is for hangers with minor cracking.

[2] NOTE: The TRI-FUNCTIONAL™ bush (TFB™) is larger than the inner diameter of axle beam tube. To avoid damaging the TFB, the correct installation tool MUST be used along with the appropriate lubricants. Refer to the “Special Tools” on page 21 section for tool details. For bush replacement procedures, refer to Hendrickson [Technical Bulletin L427](#).

AIR SPRINGS

AIR SPRING IDENTIFICATION

To assist with the correct air spring identification a visual inspection of the air spring is recommended. There are two air spring identification markings:

- The air spring part number is provided on a decal on the upper bead-plate (refer to Item 1 in [Figure 9](#))
- Moulded into the air spring rubber bellows (refer to Item 2 in [Figure 9](#)).

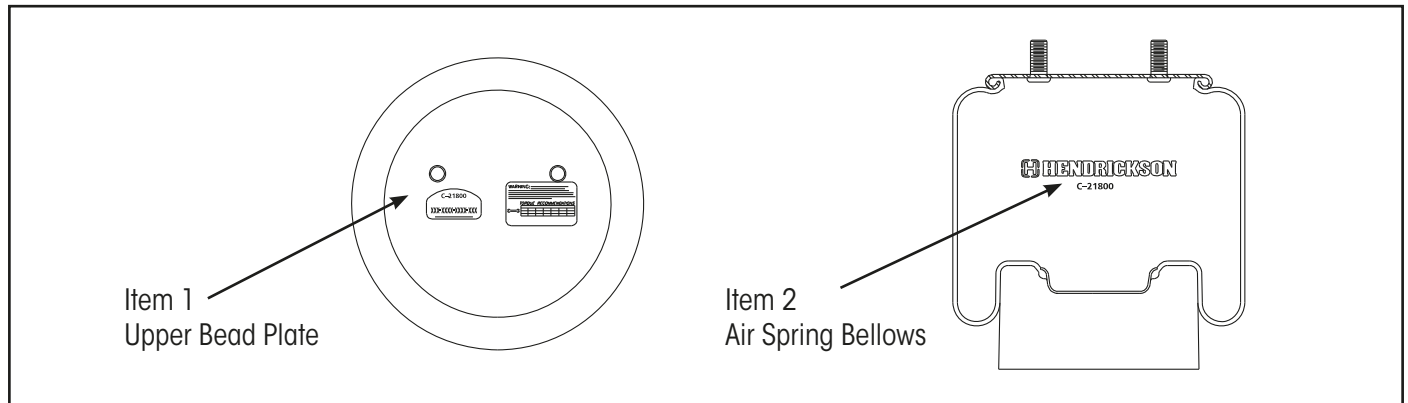
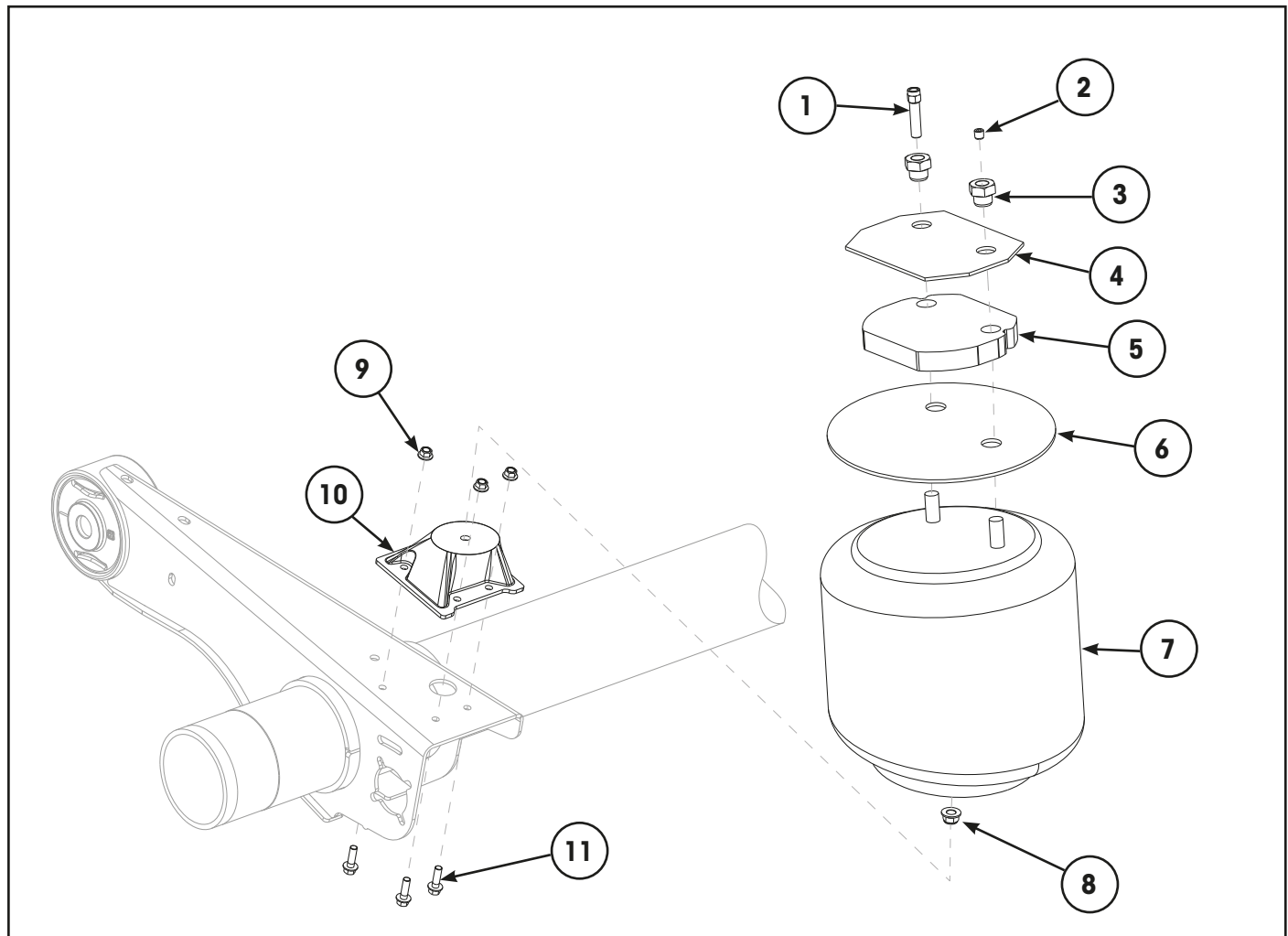


Figure 9: Air Spring Identification

AIR SPRINGS & HARDWARE



AIR SPRINGS & HARDWARE

Item	Part Number	Description	Qty	Notes
1	NSS	Air Fitting, 3/8" – Air Spring	2	Use item 12.
2	NSS	Plug, Air Fitting – 1/4" NPT	2	Use item 12.
3	NSS	Air Fitting – Air Spring	2	Use item 12.
4	B-20905	Plate – Air Spring Mount, Upper	2	All except 19" ride height.
5	S-22510-4	Spacer, Air Spring	2	19 mm. 14" ride height.
	S-22510-1	Spacer, Air Spring	2	29 mm. 15" ride height & 16" liftable.
	S-22510-2	Spacer, Air Spring	2	48 mm. 16" ride height & 17" liftable.
	S-22510-3	Spacer, Air Spring	2	80 mm. 17" ride height.
	S-22302-6	Spacer, Air Spring – Metal	2	135 mm welded metal assembly. 19" ride height.
6	S-23294	Air Spring Plate	2	14" ride height.
7	S-26773	Air Spring Assembly	2	12" ride height.
	S-21800	Air Spring Assembly	2	Excluding 12" ride height.
8	SA-7000-1	Nut, Flanged – Air Spring, Lower	2	1/2"-13.
9	SA-7000-3	Nut, Flanged - Air Spring Pedestal	6	3/8"-16.
10	S-30148-1L	Pedestal, Air Spring – Cast, LH	1	48 mm. Refer to Air Spring Pedestal Identification box below.
	S-30148-1R	Pedestal, Air Spring – Cast, RH	1	
	S-30148-3L	Pedestal, Air Spring – Cast, LH	1	79 mm. Refer to Air Spring Pedestal Identification box below.
	S-30148-3R	Pedestal, Air Spring – Cast, RH	1	
11	SA-6900-5	Bolt, Flanged – Air Spring Pedestal	2	3/8"-16 x 1.25".
12	S-22907/2	Hardware Kit – Air Spring	2	12" ride-height. Includes items 1, 2, 3, 4 & 7.
	S-22619	Hardware Kit – Air Spring	1	13.5" ride-height. 15" ride-height liftable. 19" ride-height. Includes items 1, 2, 3, 4 & 7.
	S-22630	Hardware Kit – Air Spring	1	14" ride height. 15" ride-height except liftable. 16" ride-height liftable. Includes items 1, 2, 3, 4 & 7.
	S-22631	Hardware Kit – Air Spring	1	16" ride-height except liftable. 17" ride-height liftable. Includes items 1, 2, 3, 4 & 7.
	S-22632	Hardware Kit – Air Spring	1	17" ride-height except liftable. Includes items 1, 2, 3, 4 & 7.

NOTE: Early design HALFTRAAX™ axle assemblies were manufactured with welded type air-spring pedestals, which are not available as a service part. Bolted type air-spring pedestals cannot be used to replace welded type.

Air Spring Pedestal Identification

Air spring pedestal height is measured from the bottom of the pedestal to the centre of the air spring mounting hole. See reference **A** in [Figure 10](#).

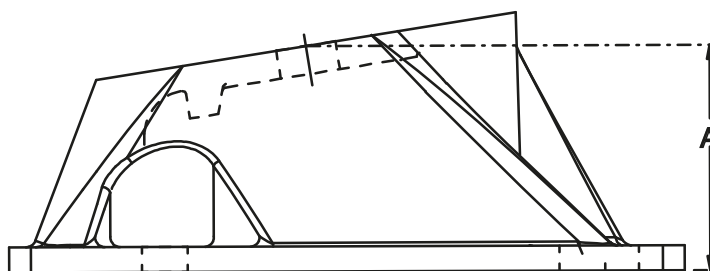
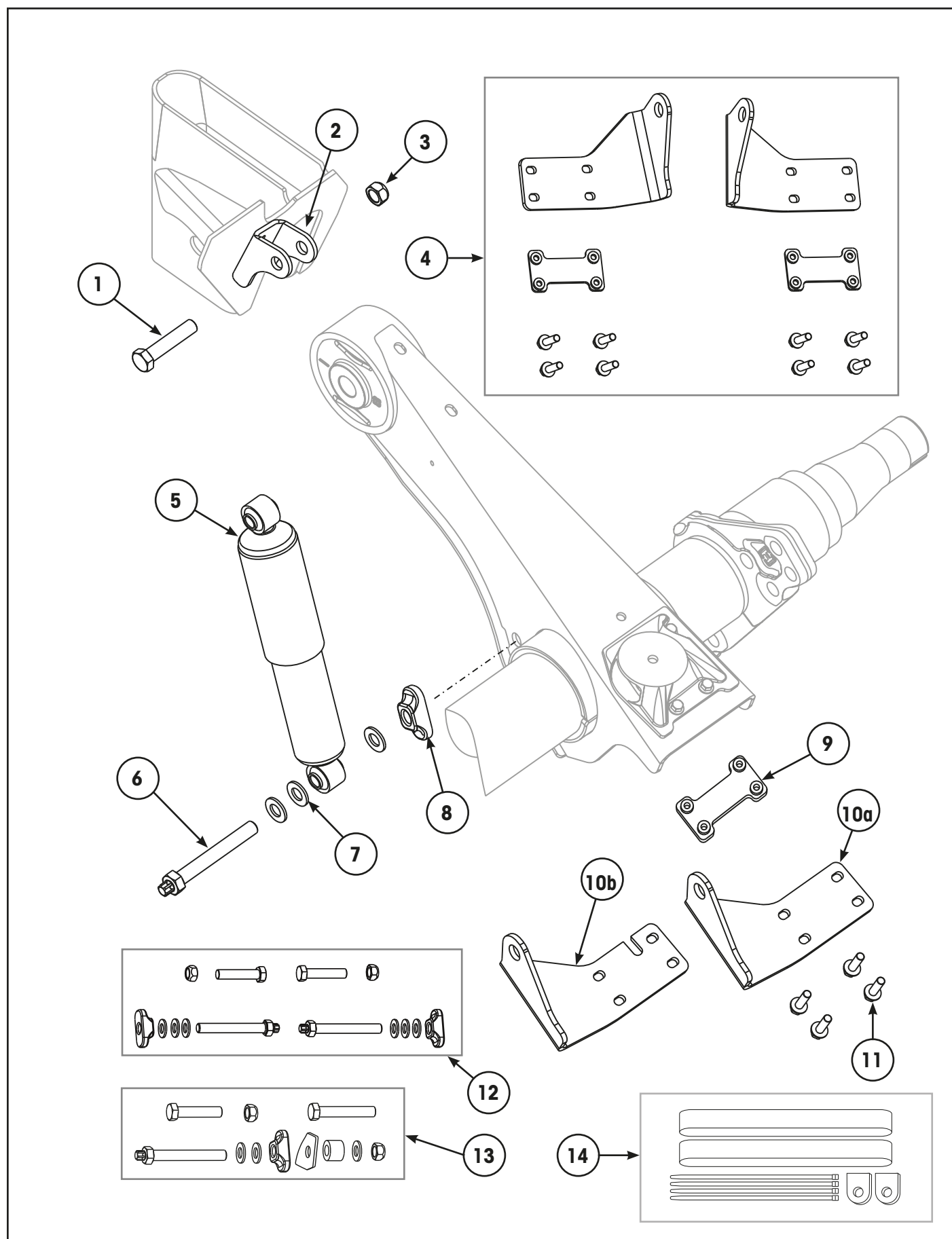


Figure 10: Pedestal Identification

SHOCK ABSORBERS & HARDWARE





SHOCK ABSORBERS & HARDWARE

Item	Part Number	Description	Qty	Notes
1	NSS	Bolt, Shock Absorber – Upper	2	Use item 12.
2	S-20113	Clevis, Mounting – Shock Absorber	2	
3	NSS	Nut, Shock Absorber – Upper	2	Use item 12.
4	98918-018	Kit, Lower Shock Support Bracket	1	Includes items 9, 10a & 11. Note: Does not suit 5" slack option.
5	S-21699	Shock Absorber – Road Friendly	2	All, except 12" ride height.
	S-20889	Shock Absorber – Non-Road Friendly	2	All, except 12" ride height.
	S-23743	Shock Absorber – Non-Road Friendly	2	12" ride height – NZ.
	B-33431	Shock Absorber – Highly Damped Non-Road Friendly	2	[1] 12" ride height – NZ.
6	NSS	Bolt, Shock Absorber Lower	2	Use item 12.
7	NSS	Washer, Hardened	6	Use item 12.
8	NSS	Shock Absorber Spacer, Cast	2	Use item 12.
9	B-31050	Nut Plate, Lower Shock Support Bracket	2	
10a	B-32949-1	Bracket, Lower Shock Support – LH	1	Standard.
	B-32949-2	Bracket, Lower Shock Support – RH	1	Standard.
10b	98870-303	Bracket, Lower Shock Support – LH – 5" Slack	1	With cut-out to suit 5" slack.
	98870-304	Bracket, Lower Shock Support – RH – 5" Slack	1	With cut-out to suit 5" slack.
11	SA-6900-5	Bolt, Lower Shock Support Bracket	8	3/8"-16 x 1.25".
12	98111-103	Bolt Kit, Shock Absorber Mounting	1	Includes items 1, 3, 6, 7 & 8.
13	S-24021	Bolt Repair Kit Shock Absorber Mounting	2	[2] Refer note.
14	98918-009	Shock Strap Kit – Suits S-21699 & S-20889	1	All, except 12" ride height. Includes straps, cable ties & clevises (if required).
	S-23086-5	Shock Strap Kit – Suits S-23743 & B-33431	1	12" ride height. Includes straps, cable ties & clevises (if required).

[1] NOTE: If retrofitting highly damped B-33431 shock absorbers they must be installed along with support bracket kit 98918-018 (item 4).

[2] NOTE: Repair kit includes upper and lower mounting hardware for one side, including extra nut and [L635](#) repair instructions to repair damaged lower bolt thread.

HEIGHT CONTROL VALVE

HCV SYSTEM IDENTIFICATION

For AANT INTRAAX® suspension systems, the Height Control Valve (HCV) components are common regardless of configuration, with the following exceptions.

The HCV brackets and lower linkage mounting brackets are available in two variations as follows:

- Fixed to the brake chamber bracket (Refer to [Figure 11](#))
- Fixed to the axle tube (Refer to [Figure 12](#))

The HCV (upper) mounting bracket varies between the brake chamber and axle tube mounted lower linkage bracket. Before mid-2019, the brake chamber lower linkage mounting has an additional spacer bracket between the hanger mounting point and the HCV mounting studs. From mid-2019, the HCV brake chamber mounting uses a single longer bracket that replaces the two shorter ones.

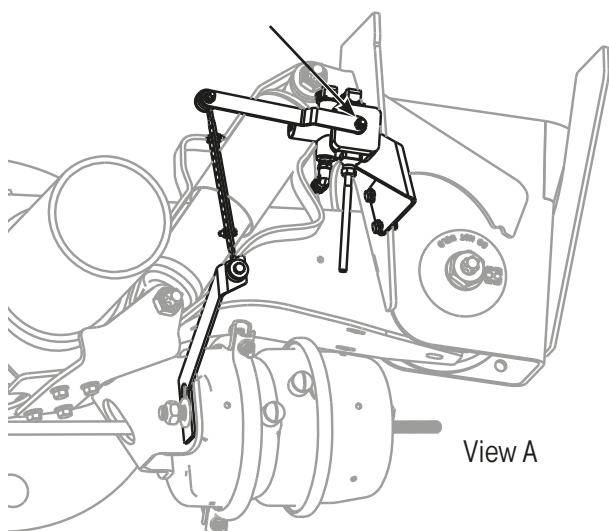


Figure 11: Brake Chamber Bracket Mount

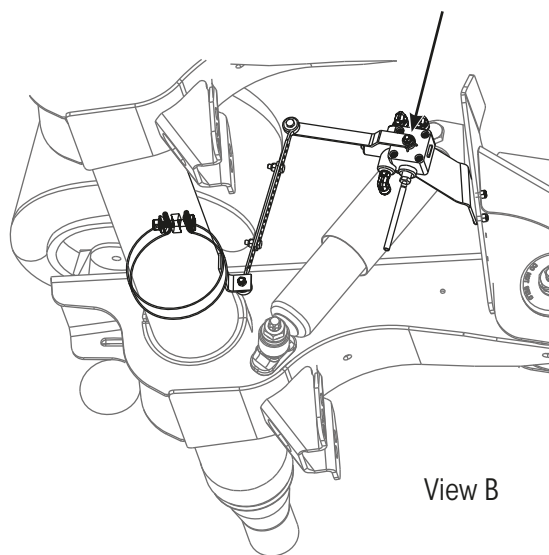


Figure 12: Axle Tube Mount

NOTICE: The HCV assembly (Part no. 98603-022) includes the lever arm. The nut that retains the lever arm to the HCV shaft is held tight with thread lock and **MUST NOT** be removed! (Refer arrows.) Attempting to remove the nut will most likely result in fracture of the HCV shaft.

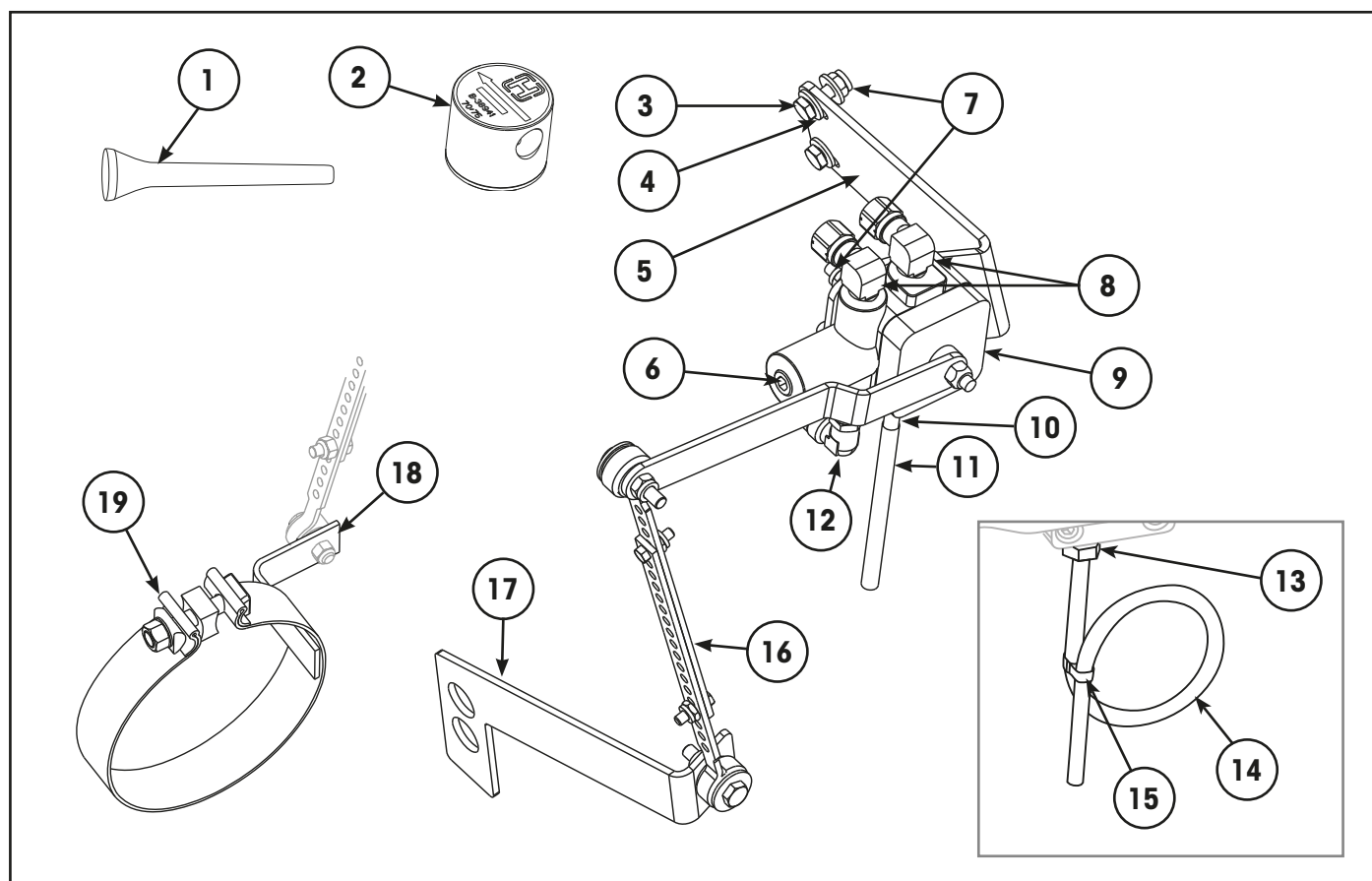
Complete HCV Kits

Complete Height Control Valve kits include HCV, protection valve, linkages, brackets, clamps and necessary hardware.

Number	Suitable For	Components
98606-096	Brake Chamber Mounted Linkage	Includes items 1, 2, 3, 4, 5, 6, 7, 8, 9, 10, 11, 12, 16 & 17.
98606-336	5" Axle Tube Mounted Linkage	Includes items 1, 2, 3, 4, 5, 6, 7, 8, 9, 10, 11, 12, 16, 18, & 19.
98606-097	5-3/4" Axle Tube Mounted Linkage	Includes items 1, 2, 3, 4, 5, 6, 7, 8, 9, 10, 11, 12, 16, 18, & 19.



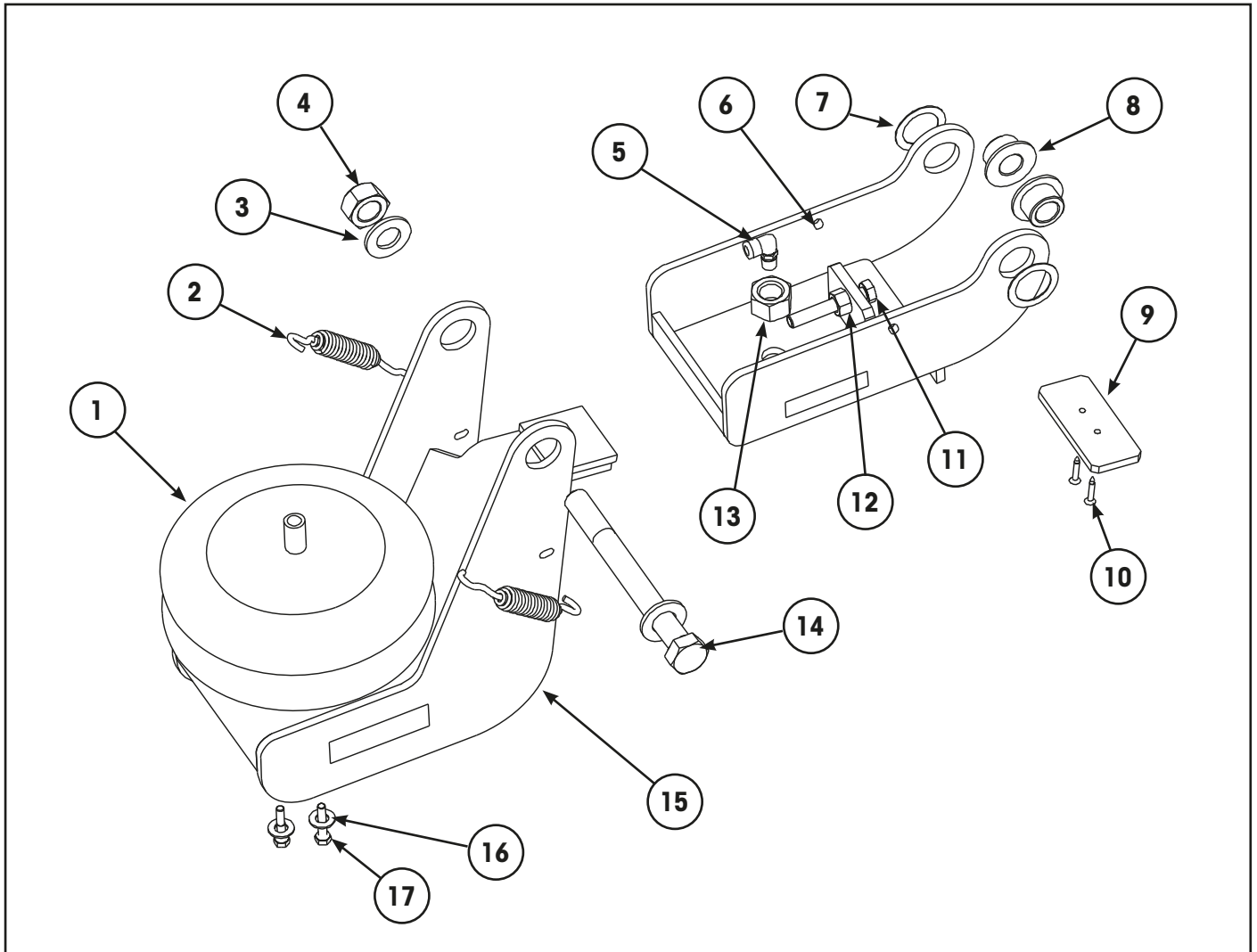
HEIGHT CONTROL VALVE



Item	Part Number	Description	Qty	Notes
1	NSS	HCV Centring Dowel	1	Use item 20.
2	S-38941	Pressure Protection Valve	1	
3	NSS	Bolt, 1/4"-20 UNC x 3/4"	2	Use item 20.
4	22962-028	Washer, Hardened – 1/4"	6	
5	B-26303	HCV Bracket – Short (Not illustrated)	1	Suits clamp band mount, item 19.
	98677-022	HCV Bracket – Long (Replaces two-piece)	1	Suits brake chamber mount, item 17.
6	NSS	Pipe Plug 1/4" NPTF	1	Use item 20.
7	NSS	Nut Lock Hex 1/4"-20 UNC	4	Use item 20.
8	98732-003	Elbow 90° x 1/4" NPTF Compression	2	Compression. Two are included in item 20.
9	98603-022	Height Control Valve 1/4" NPT	1	
10	NSS	Barbed Tube Fitting, 1/4" NPT, Plastic	1	Use item 20. For heavy duty applications use items 13, 14 & 15.
11	NSS	Tube 1/4" ID x 4" Long	1	
12	98934-031	Elbow 90° Swivel x 1/4" NPT	1	Push to connect, swivel.
13	98934-035	Fitting 1/4 NPT, Metal	1	Optional vent tube & fitting suitable for heavy duty axle use.
14	SA-6400-2	Tube, Black Nylon – 1/4" x 12" Long	1	
15	S-11430-1	Tie, Nylon	1	
16	S-14187	Link Assembly – Bolted	1	
17	S-22477	Bracket, Lower – HCV Link	1	Brake chamber bracket mounted.
18	S-23293	Bracket, Lower – HCV Link	1	Axle tube mounted. Use with clamp, item 19.
19	S-26593-1	Clamp, Bracket - HCV Link	1	5.00" axle tube mounted.
	S-26593-3	Clamp, Bracket - HCV Link	1	5.75" axle tube mounted.
20	S-29870	HCV Sub Kit (See also "Complete HCV Kits")	1	Includes items 1, 3, 6, 7, 8, 10 & 11. (Not illustrated)

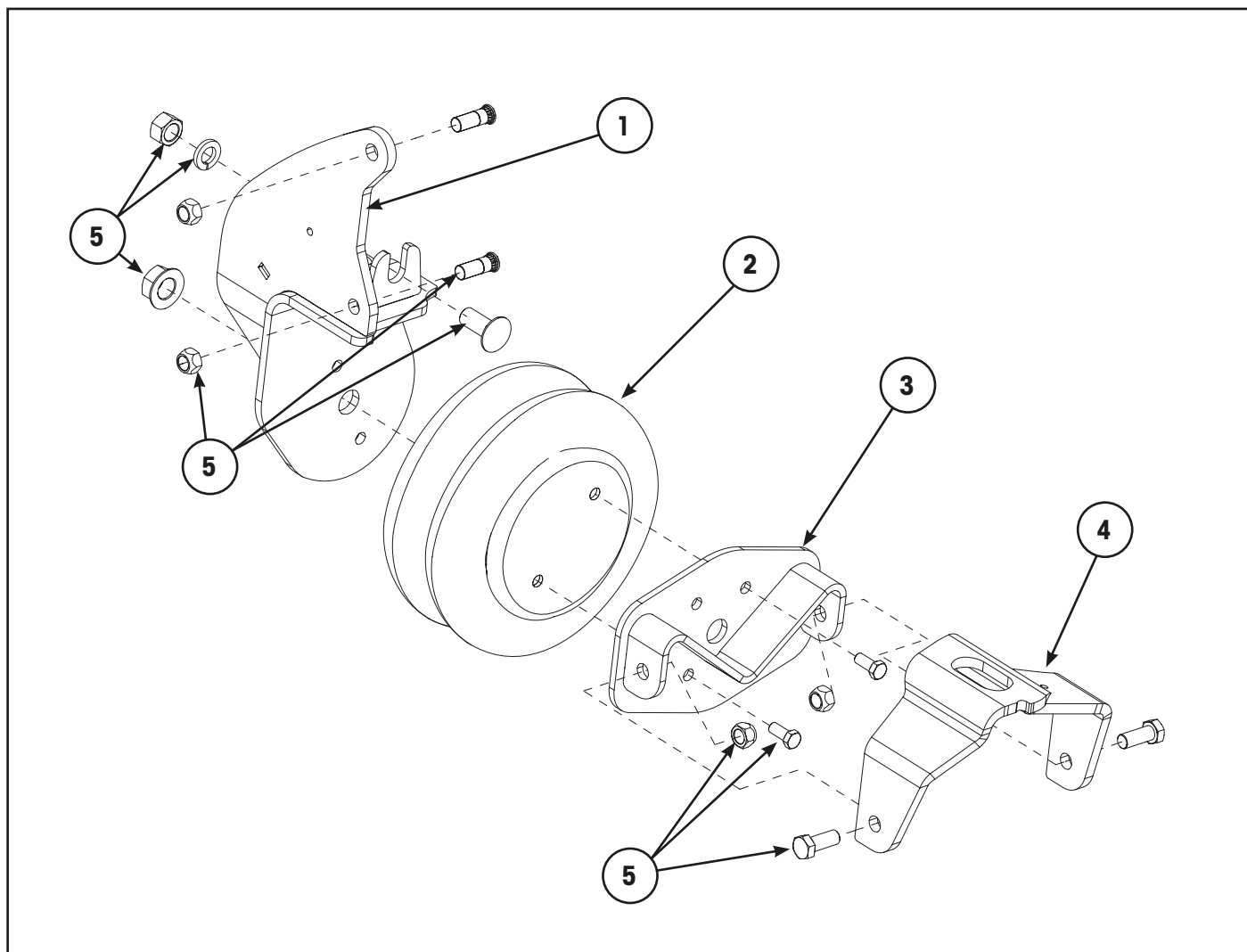
AXLE LIFT SYSTEM HARDWARE

UBL™ KIT - EARLY, UP TO 2018



Item	Part Number	Description	Qty	Notes
1	S-23114	Air Spring, Lift Axle	2	
2	B-20693	Spring, Retaining – Axle Lift Bracket	4	
3	S-21024	Washer, Hardened	4	7/8"
4	50106-000	Nut, Cone Lock	2	7/8" – 9" Grade 8
5	98934-031	Elbow 90° Swivel x 1/4" NPT	2	Push to connect.
6	98429-015	Bracket, Axle Lift – Hanger Fixing	2	
7	98429-007	Spacer, Hardened – 50 x 1 mm	4	
8	98429-002	Bush, Pivot – 50 x 22 mm	4	
9	98429-008	Brace Plate – Lift	2	
10	98841-002	Screw, Self-Drilling	4	Gauge 10 – 18 x 30
11	98651-002	Set Screw	2	M12 x 75 Class 8.8
12	58248-000	Nut, Lock	2	M12
13	S-22490-5	Flange Nut – Spiral Lock	2	3/4" x 16
14	98766-006	Bolt, Pivot	2	7/8" – 9 x 8.5" Grade 8
15	98429-014	Bracket, Axle Lift – Spring Fixing	2	
16	22962-015	Washer, Hardened	4	3/8"
17	SA-1100-2	Bolt, Hex	4	3/8" x 0.88"

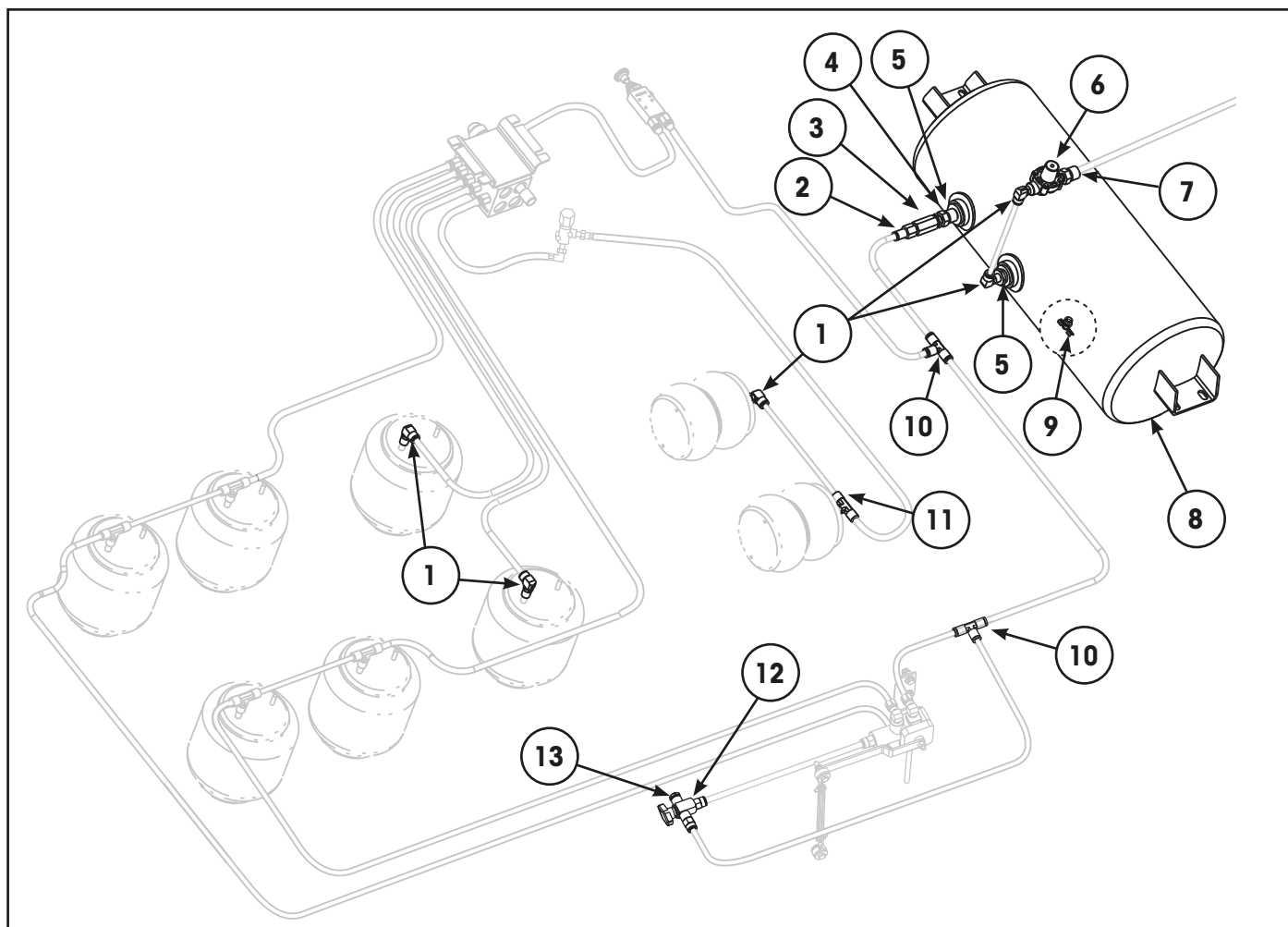
AXLE LIFT SYSTEM HARDWARE UBL™ KIT - LATE, FROM 2018



Item	Part Number	Description	Qty	Notes
1	S-32038-1C	Lift Support Frame Bracket – Left Hand	1	
	S-32038-2C	Lift Support Frame Bracket – Right Hand	1	
2	S-23114	Air Spring	2	
3	S-28614	Rear Bracket Assembly	2	
4	S-28617-1	Lift Bracket – Left Hand	1	
	S-28617-2	Lift Bracket – Right Hand	1	
5	S-30634-1/2	Lift Assembly Hardware Kit	2	Includes all bolts, nuts and washers required to install UBL-401 kit on one side.
6	UBL-401	Complete UBL™ Kit to Suit AANT (Not illustrated)	1	[1] Includes all items, 1, 2, 3, 4 & 5.

[1] NOTE: The UBL-401 kit cannot be paired with some brake chambers. This is due to insufficient clearance that restricts correct movement. The TSE UltraLife 30/30 3" stroke brake chamber is known to interfere. However, other similar sized long stroke brake chambers may also cause obstruction.

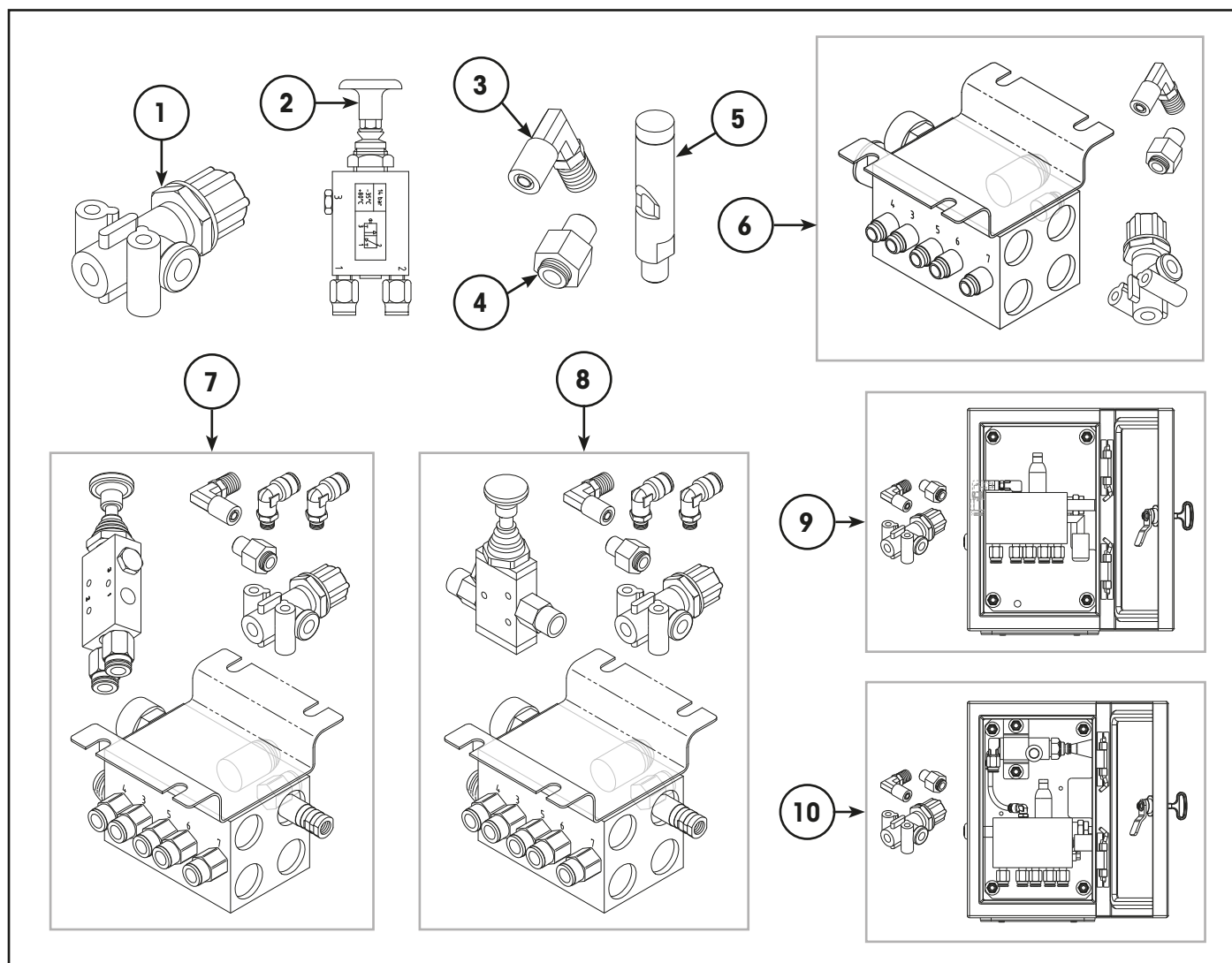
AXLE LIFT SYSTEM CONTROL



Item	Part Number	Description	Qty	Notes
1	98934-031	Male 90° Elbow – 3/8" x 1/4" NPT	AR	
2	98934-005	Connector – Female 3/8" x 1/4" NPT	1	For in-line filter, item 3.
3	98499-006	Air In-Line Filter – 1/4" NPT	1	Use with fitting, item 2.
4	98934-025	Fitting, 1/4" Male x 1/4" Male	1	For in-line filter, item 3.
5	98934-028	Reducing Bush – 3/4" NPT x 1/4" NPT	1	
6	S-38941	Pressure Protection Valve	1	
7	98934-026	Fitting – 1/2" x 1/4" NPT	2	
8	97065-004	Air Tank – 24 Litre, 240 x 630 mm	1	
9	98934-027	Drain Valve	1	
10	98934-015	Tee – 3/8"	1	
11	98934-032	Tee Male Swivel – 3/8"	AR	
12	A-22535	Dump Valve, 3-Way Ball	1	For suspension dump option.
13	98732-015	Silencer Fitting	1	To suit dump valve, item 12.

IMPORTANT: These axle lift system control parts are only applicable to LACV systems supplied by Hendrickson Australia.

LIFT AXLE CONTROL VALVE



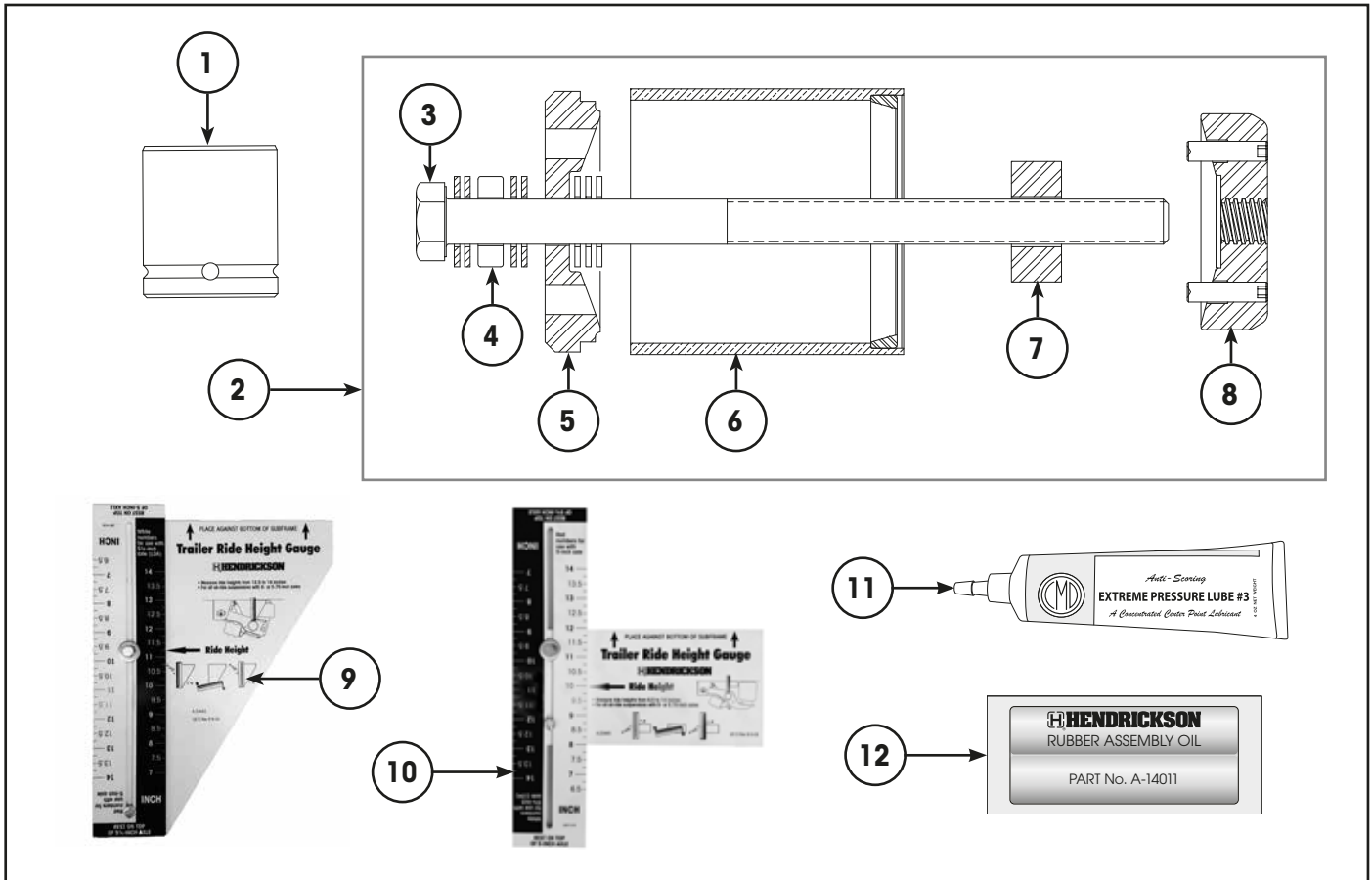
Item	Part Number	Description	Qty	Notes
1	98732-006	Pressure Regulator – 80 psi	1	Included in items 6, 7, 8, 9 & 10.
2	98402-003	Valve – Manual Override	1	Standard override valve for Auto/Auto LACV. Includes fittings. Included in items 7 & 10.
3	98732-003	Air Fitting – 90° Elbow	1	Use with pressure regulator, item 1.
4	98732-002	Air Fitting – Straight	1	
5	98732-059	Whistle	2	Included in complete LACV, items 9 & 10.
6	98975-004	Manual/Auto – With 80 psi Regulator	1	LACV with fittings & decal. Includes item 1, 3 & 4.
7	98975-005	Auto/Auto – With 80 psi Regulator	1	LACV with standard override valve, fittings & decal. Includes items 1, 2, 3 & 4. Refer illustration.
8	98975-008	Auto/Auto – With 80 psi Regulator	1	LACV with alternate override valve, fittings & decal. Includes items 1, 3, 4 & alternate (straight) version of item 2. Refer illustration.
9	98975-013	Manual/Auto – With 80 psi Regulator	1	Enclosure with LACV, regulator & fittings, item 6.
10	98975-014	Auto/Auto – With 80 psi Regulator	1	Enclosure with LACV, valve, regulator & fittings, item 7.

IMPORTANT: These axle lift control system components are only applicable to systems supplied by Hendrickson Australia.



This Page is Intentionally Left Blank

SPECIAL TOOLS



Item	Part Number	Description	Qty	Notes
1	S-24303	Socket, Pivot Bolt – E20	1	3/4 inch drive
	S-24536	Socket, Pivot Bolt – E20	1	1 inch drive standard duty
	S-25119	Socket, Pivot Bolt – E20	1	1 inch drive heavy duty
2	S-24736	Tool Kit - Narrow TRI-FUNCTIONAL™ Bush	1	Kit includes items 3 to 8 & 11. Refer Note.
3	S-24215	Bolt, Acme Thread – 14 Inch	1	Included in item 2.
4	98762-001	Bearing, Thrust – TFB™ Tool	1	Included in item 2.
5	S-26986	Plate, Front – TFB Tool	1	Included in item 2.
6	S-24216	Tube, Transition – TFB Tool	1	Included in item 2.
7	S-21314	Spacer, Removal – TFB Tool	1	Included in item 2.
8	S-26985	Plate, Rear Drive – TFB Tool	1	Included in item 2.
9	S-23442	Gauge, Ride Height – 13.5 to 19 Inch	1	
10	S-23445	Gauge, Ride Height – 6.5 to 14 Inch	1	
11	S-21337	Grease, Extreme Pressure	1	[1] Essential for use with tool on installation. Included in item 2.
12	A-14011	Lube Pack - TRI-FUNCTIONAL Bush	1	To lubricate bushes on installation.

[1] NOTE: The TRI-FUNCTIONAL™ tool kits are supplied with one tube of extreme pressure grease. It is essential to use this grease on the tool's Acme thread to avoid thread form damage. Do not use this grease on the bushes.



REVISIONS TABLE

DATE	REV	PAGE	DESCRIPTION
May-2018	D	All	Add AANT HP axles. Add B-33431 shock absorber & UBL-401 Kit. Expand axle lift controls. Replace air fitting with 98934-031. Clarify early UBL parts. Correct TFB tool plate to S-26986. Add HCV sub kit S-29870. ECN 10587, 11247, 11321, 11364.
Nov-2018	E	9	Add hanger repair kits & 19" ride height ECN 11274, 11419, 11630. Correct TFB kit quantity.
Dec-2019	F	13	Clarify shock bolt repair kit. Add shock strap kit.
Dec-2019	F	14, 15	Update HCV components, ECN 11464.
Dec-2019	F	9, 11	Amend hanger repair kit number. Add 14" ride height, ECN 11611.
Dec-2019	F	18, 19	Expand axle lift details, ECN 11515.
Feb-2021	G	19	Add whistle, ECN 11559.
Feb-2021	G	8, 9	Add brake chamber mount.
Feb-2021	G	15, 18	Update PP valve, ECN 11716.
Feb-2021	G	5, 6, 7	Add 83.5" HALFTRAAX, ECN 11642, 11778.
Feb-2021	G	15	Update HCV band clamp, ECN 11822.
Feb-2024	H	9	Update brake chamber mount, ECN 11719.
Feb-2024	H	12, 13	Add 5" shock support bracket, ECN 11965.

Actual product performance may vary depending upon vehicle configuration, operation, service and other factors.
All applications must comply with applicable Hendrickson specifications and must be approved by the respective vehicle manufacturer with the vehicle in its original, as-built configuration.
Contact Hendrickson for additional details regarding specifications, applications, capacities, and operation, service and maintenance instructions.

Need Help? Australia Call **+61 3 8792 3600** or Email **customerservice@hendrickson.com.au**
New Zealand Call **+64 9 570 4721** or Email **nz-customerservice@hendrickson.co.nz**



www.hendrickson.com.au

HENDRICKSON ASIA PACIFIC PTY LTD
ABN 21 004 992 769
32-44 Letcon Drive, P.O. Box 1063
Dandenong, Victoria, 3175
61.3.8792.3600 • Fax 61.3.8792.3699

HENDRICKSON NEW ZEALAND
Unit P, 24 Allright Place
Mt Wellington, Auckland, 1060
64.9.570.4721 • Fax 64.9.570.4816