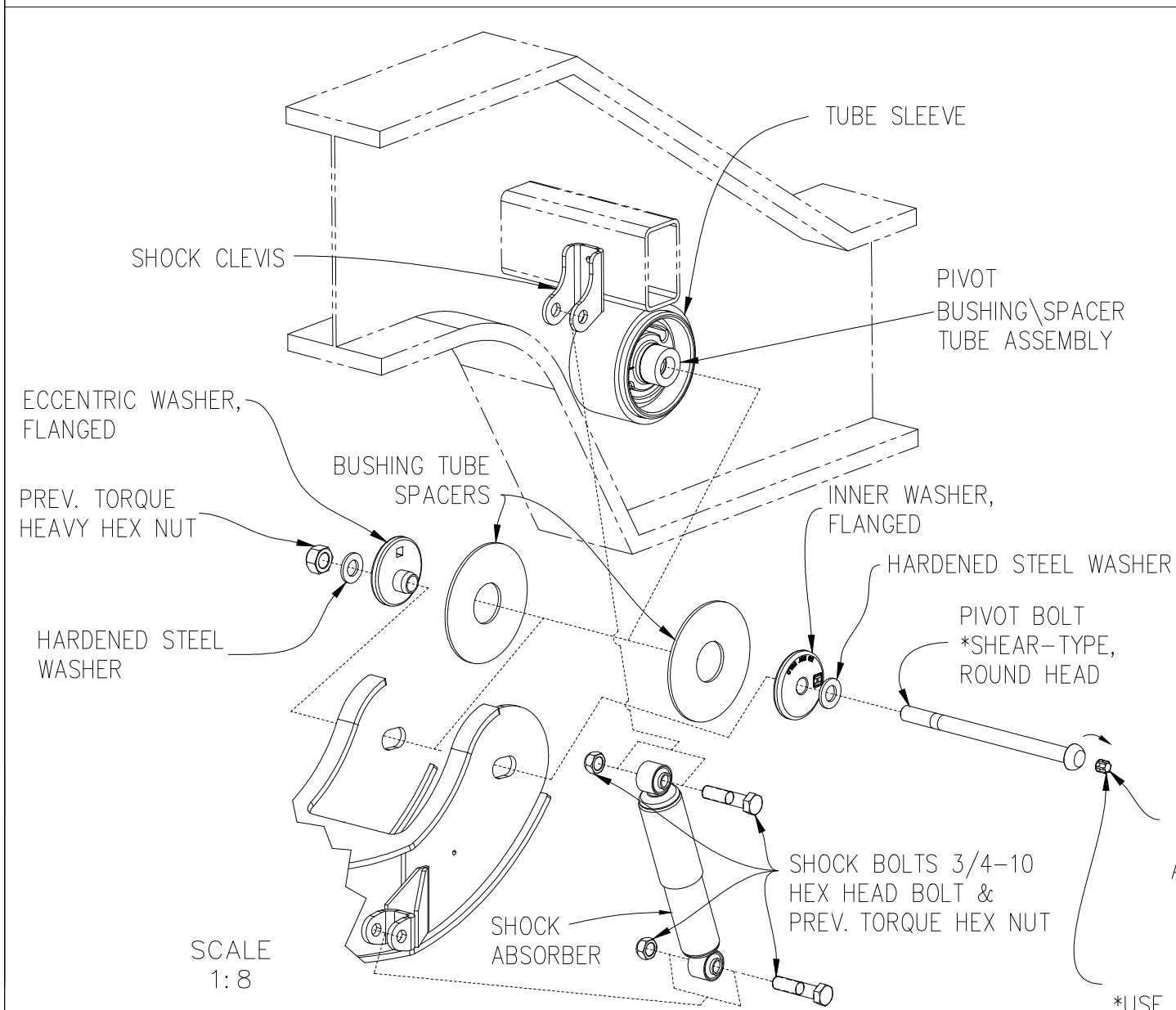
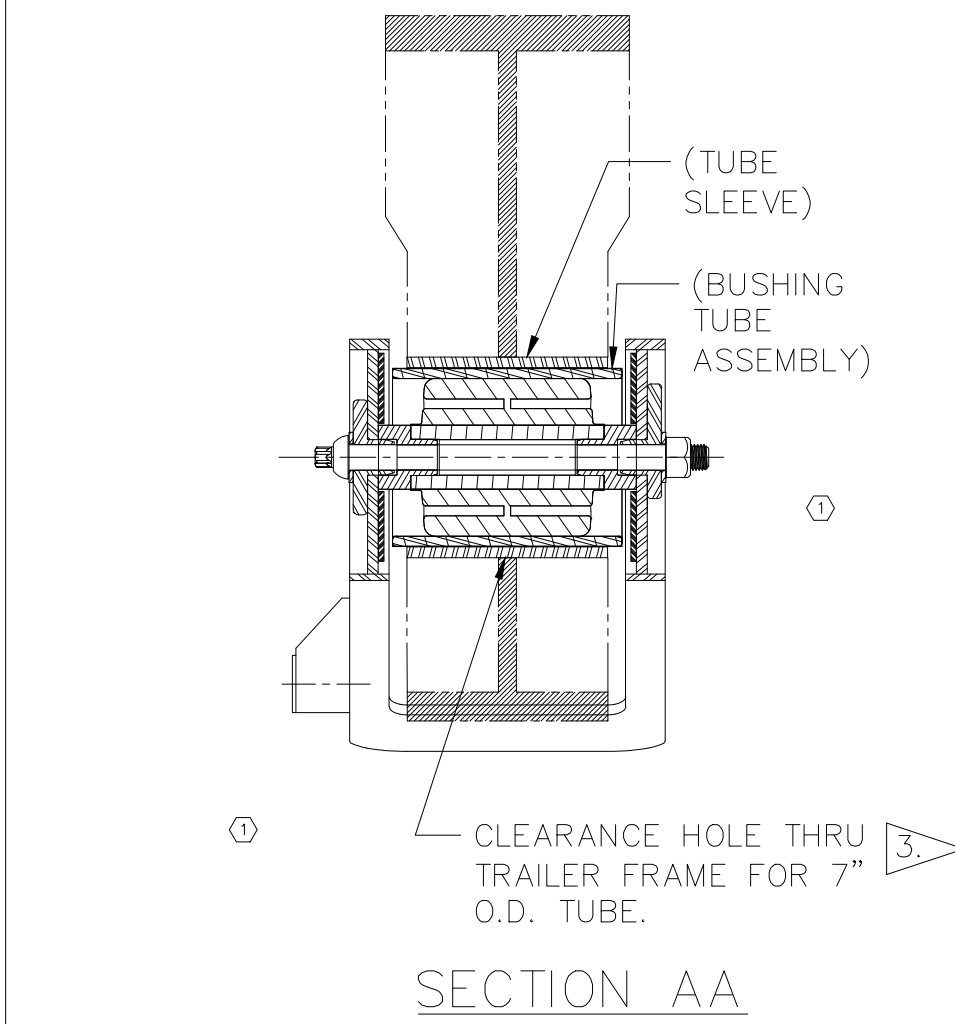


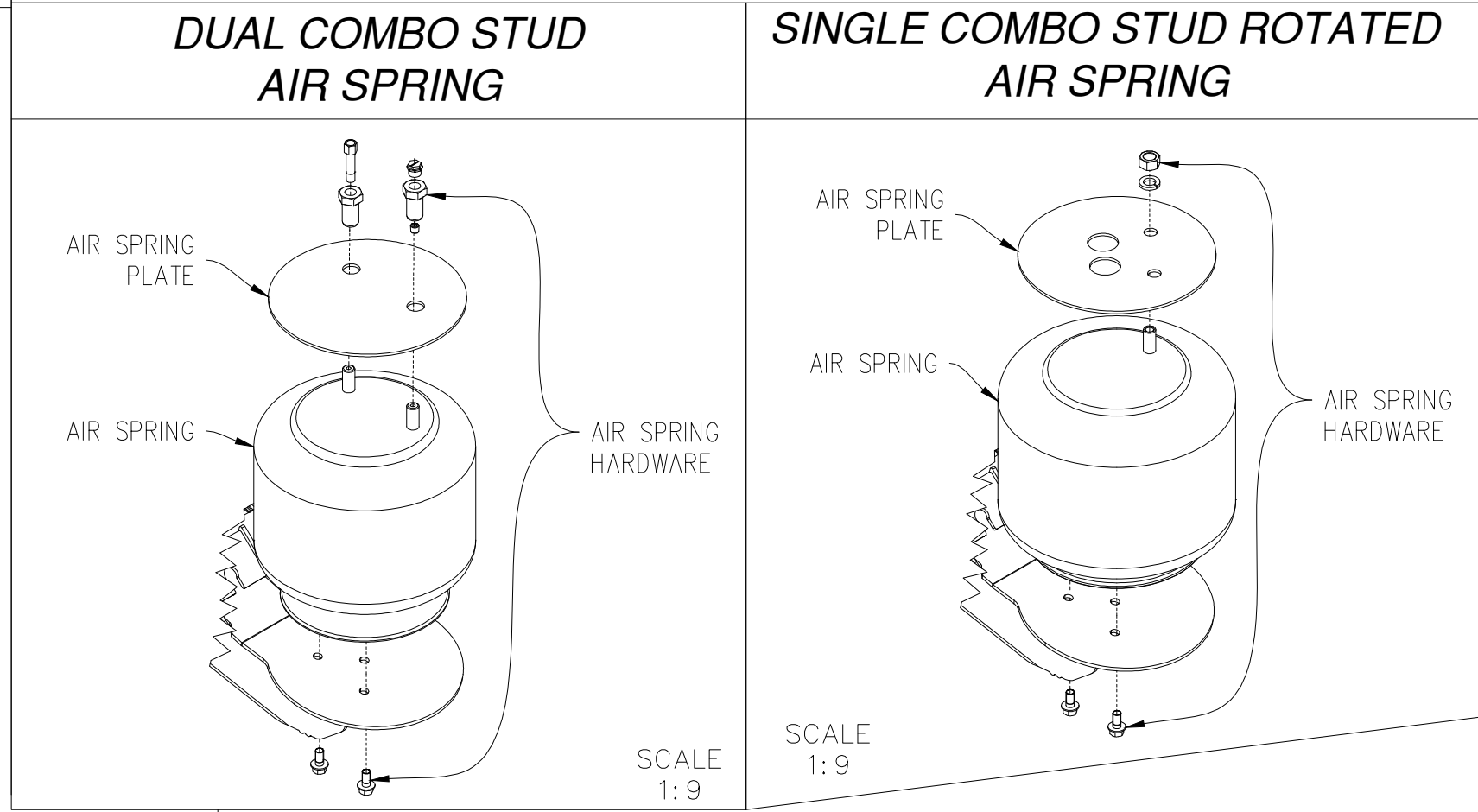
① **HARDWARE INSTALL DETAIL**



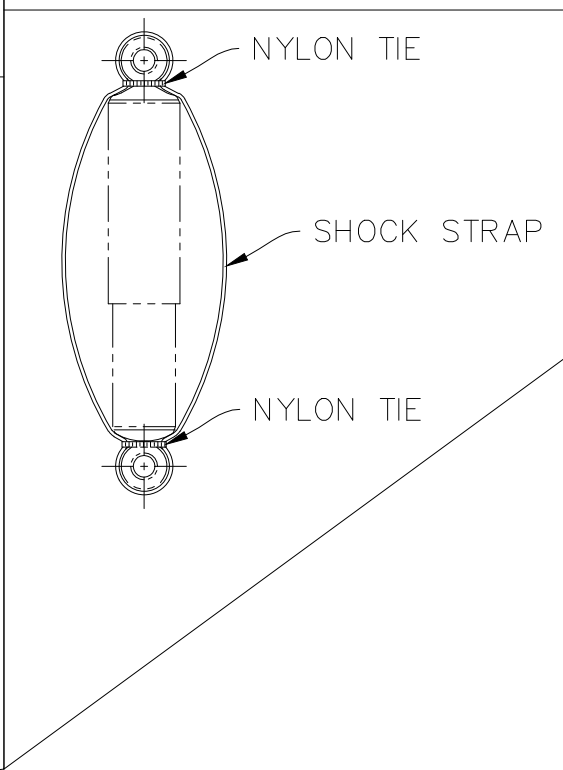
① CHART BB TORQUE SPECIFICATIONS		
DESCRIPTION	SIZE	TORQUE (FT LB)
U-BOLTS	7/8-14	475-525
SHOCK BOLTS ①	3/4-10	210-235
AIR SPRING NUTS, UPPER	3/4-16	80-100
AIR SPRING BOLTS, LOWER	1/2-13	40-50



① **AIR SPRING INSTALLATION DETAIL**

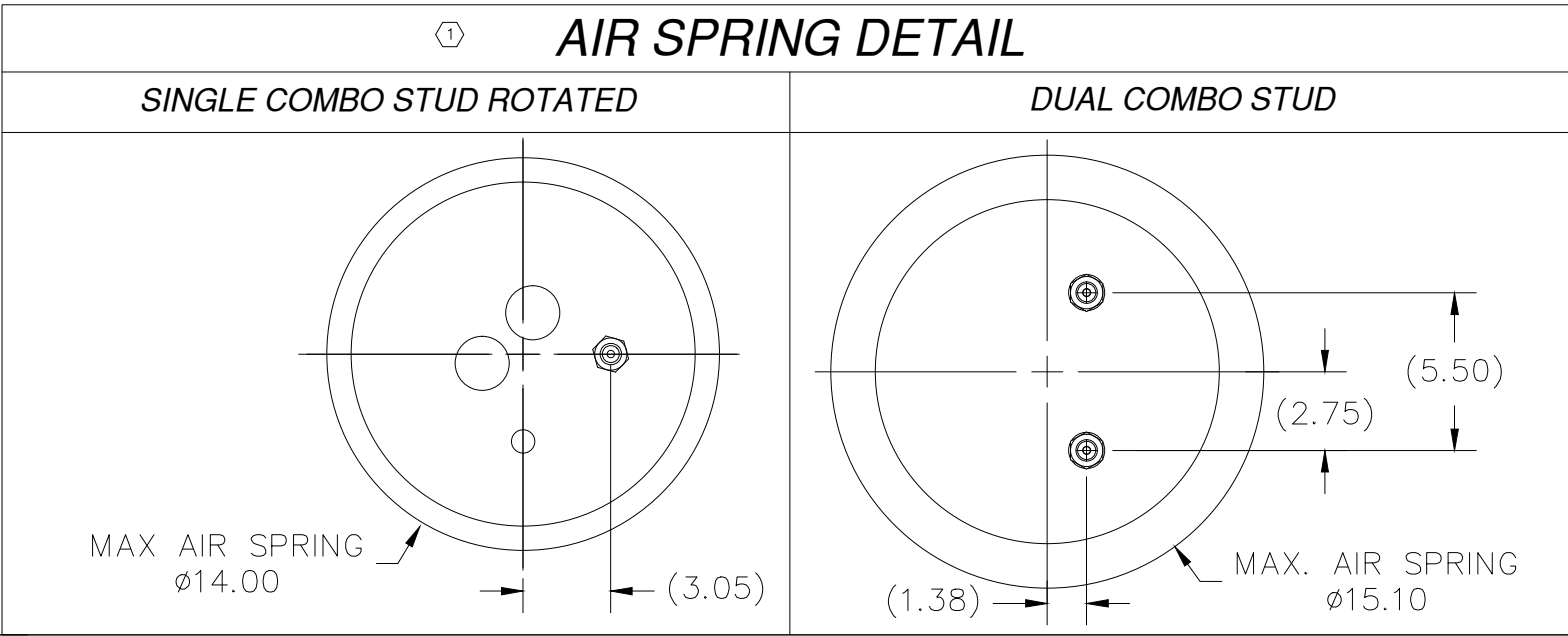
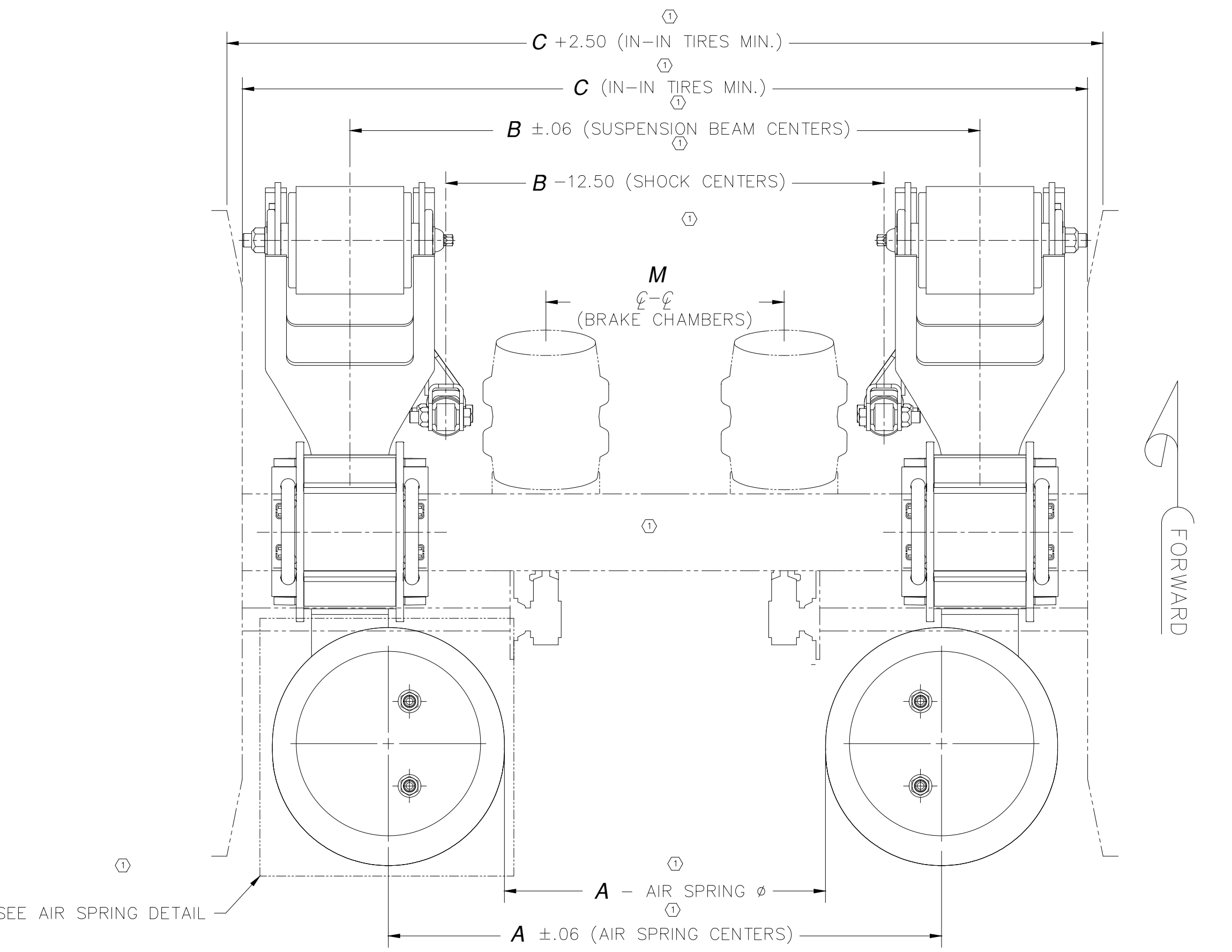
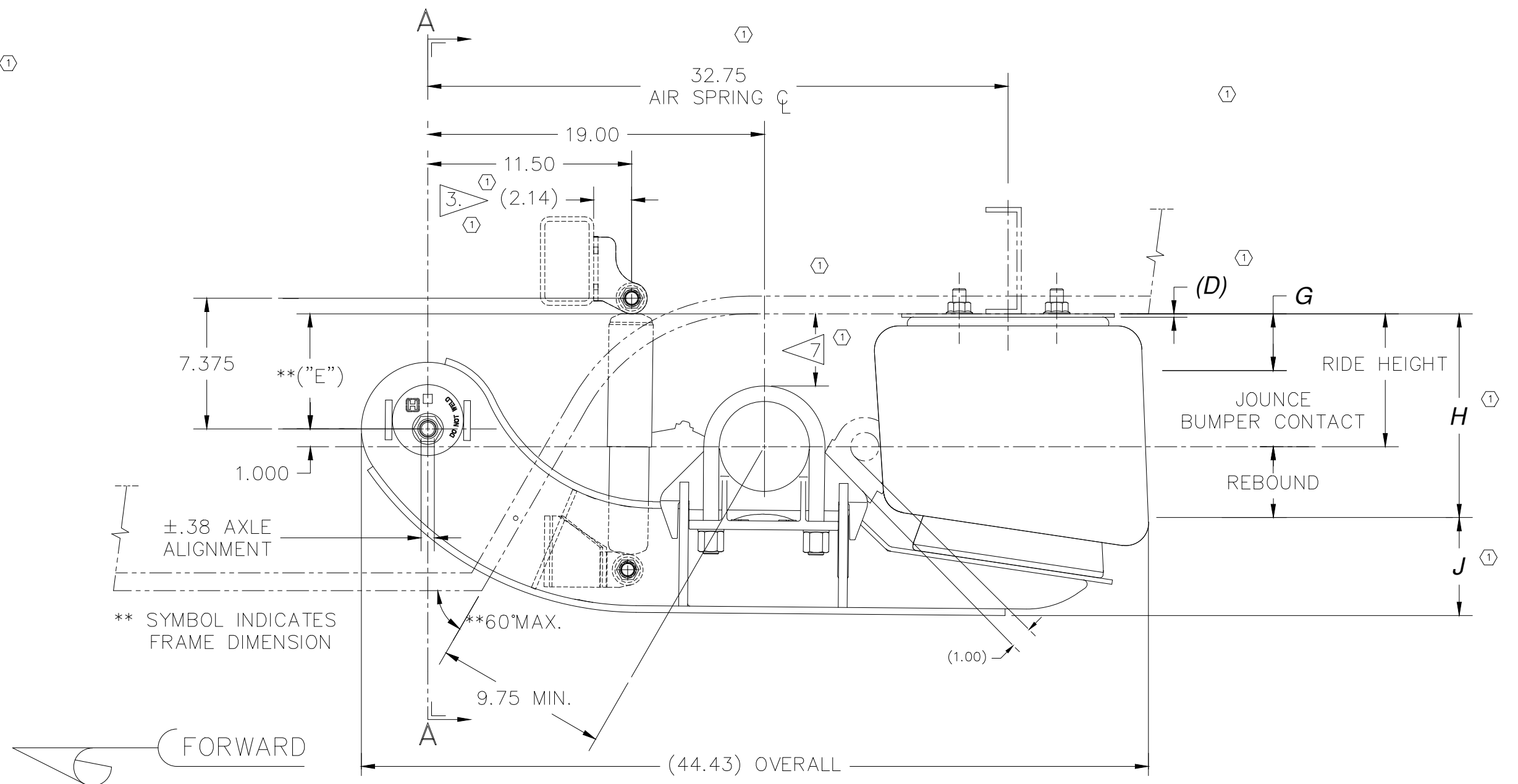


INSTALL DETAIL FOR SHOCK STRAPS



- NOTES:**
- SEE T44004 FOR INFORMATION ON ASSEMBLY, WELDING PROCEDURE, AND ALIGNMENT.
 - SEE SERVICE MANUAL FOR INFORMATION CONCERNING MAINTENANCE PROCEDURES.
 - SEE PAGE 2 FOR REQUIRED CROSSMEMBER LOCATIONS, FRAME CLEARANCE AND MOUNTING DETAILS. ACTUAL SIZE AND SHAPE MAY VARY WITH TRAILER DESIGN. IT IS THE RESPONSIBILITY OF THE INSTALLER TO ENSURE STRUCTURAL ADEQUACY OF TRAILER FRAME AND CROSSMEMBERS.
 - SEE CHART BB FOR TORQUE SPECIFICATIONS OF FASTENERS.
 - SEE STANDARD TRAVEL TABLE FOR ALLOWABLE RIDE HEIGHT RANGES.
 - GRAPHICS SHOWN ARE REFERENCE OF A HT300YB AT 9.0" RH.
 - DO NOT ROUTE ITEMS THROUGH THIS AREA DUE TO MINIMAL BEAM TO FRAME CLEARANCE.
 - CONTACT HENDRICKSON TRAILER COMMERCIAL VEHICLE SYSTEMS FOR SUSPENSION WEIGHT.
 - SUSPENSION CAPACITY: 30,000 LBS. @ GROUND. SUSPENSION CAPACITY ONLY INCLUDES THE SUSPENSION AS SUPPLIED BY HENDRICKSON. CAPACITY RATINGS OF AXLE, BRAKES, TIRES, WHEELS, ETC. MAY LIMIT THE OVERALL CAPACITY OF THE SYSTEM.
 - RECOMMENDED BRAKE CAMSHAFT AND BRAKE CHAMBER LOCATIONS MAY VARY SLIGHTLY BASED ON AXLE MANUFACTURERS RECOMMENDATIONS.
 - JOUNCE AND REBOUND DIMENSIONS CHANGE AS THE RIDE HEIGHT CHANGES FROM THE NOMINAL POSITION.
 - DIMENSIONS "G" & "H" WILL REMAIN CONSTANT REGARDLESS OF RIDE HEIGHT VARIATION FROM NOMINAL POSITION.
RIDE HEIGHT - JOUNCE = "G"
RIDE HEIGHT + REBOUND = "H"
 - FOR OPTIMUM SUSPENSION PERFORMANCE ALL SUSPENSIONS ON A TRAILER SHOULD BE AT DESIGNED RIDE HEIGHT WHEN THE TRAILER IS LOADED. TRAILERS WITH FLEXIBLE FRAMES REQUIRE SPECIAL ATTENTION TO MAKE SURE THEY OPERATE WITHIN THE RIDE HEIGHT TOLERANCE LIMITS, BOTH EMPTY AND LOADED. OPERATION OUTSIDE OF RIDE HEIGHT TOLERANCE CAN REDUCE RIDE QUALITY AND SHORTEN SUSPENSION LIFE.
 - VARIATION IN RIDE HEIGHT BETWEEN LIKE SUSPENSIONS MAY RESULT IN UNEQUAL LOADING OF THE AXLES.

① STANDARD TRAVEL									
RIDE HEIGHT	JOUNCE	REBOUND	BUMPER CONTACT	D	E	G	H	RIDE HEIGHT TOLERANCE LIMITS	
								MIN.	MAX.
7.5	4.3 ①	4.1	3.7 ①	.188	6.5	3.2	11.6	7.0	8.5
9.0	5.1 ①	4.1	4.6 ①	.188	8.0	3.9	13.1	7.5	10.0



① GROUND CLEARANCE	
TO CALCULATE GROUND CLEARANCE, SUBTRACT "J" FROM LOADED TIRE RADIUS.	
RIDE HEIGHT	J
7.5	9.52
9.0	9.52

① FRAME CENTERS		
DIMENSION A	35.00	41.00
DIMENSION B	30.00	36.00
DIMENSION C	35.00	41.00
DIMENSION M	49.00	55.00
	9.5 MAX	15.5 MAX

HT300YB.XXX PART NUMBERS FOR USE WITH HT300US SUSPENSIONS ONLY

This Print remains the property of Hendrickson. All information contained thereon is confidential. It is loaned, subject to return on demand and on express condition that it is not to be copied or used directly or indirectly for any purpose other than the purpose for which it has been loaned to you.

HENDRICKSON
TRAILER COMMERCIAL VEHICLE SYSTEMS
2070 INDUSTRIAL PLACE SE., CANTON, OH 44707-3600 U.S.A.

UNLESS OTHERWISE NOTED:		DIMENSIONS ARE:		INCHES	
TOLERANCES ARE:					
XX: ± .1					
XXX: ± .030					
ANGULAR: ± 0.5°					
DIMENSIONS ADHERE TO ANSI Y14.5M-1992					

DRAWN BY	J. HOFER	01-29-15
CHECKED BY	C. RADCLIFF	
APPROVED BY	K. ERMANN	

HT300YB SUSPENSION
INSTALLATION

SCALE	1:6	SIZE	D	PAGE	1 OF 2
DRAWING NO.	D-35072				

① **P
PRODUCTION**

SUGGESTED ATTACHMENT DETAIL

CAUTION

FRAME CLEARANCE DETAIL

AIR SPRING PLATE
DUAL COMBO STUD

AIR SPRING STUDS MAY BE ROTATED ABOUT AIR SPRING CENTER TO ACCOMMODATE INDIVIDUAL FRAME REQUIREMENTS, PROVIDED CUSTOMER MAINTAINS ADEQUATE SUPPORT. SEE L64 FOR ADDITIONAL INFORMATION.

AIR SPRING PLATE
SINGLE COMBO STUD ROTATED
DETAIL

LOCATE AIR SPRING CROSSMEMBER AS SHOWN AND ADD GUSSET FOR ADDITIONAL SUPPORT.

BUSHING SLEEVE WELD DETAIL

4 EACH FRAME .25 .25

THE CROSSMEMBER STRUCTURE AND LOCATIONS SHOWN HERE AND IN THE INSTALLATION MANUAL (L577) ARE RECOMMENDATIONS ONLY AND MAY VARY DEPENDING ON THE TRAILER DESIGN

THE BUSHING TUBE SLEEVE SUPPORT BRACE STRUCTURE AND LOCATIONS SHOWN HERE AND IN THE INSTALLATION MANUAL (L577) ARE RECOMMENDATIONS ONLY AND MAY VARY DEPENDING ON THE TRAILER DESIGN

BUSHING TUBE WELD DETAIL

.25 .50 BOTH SIDES, 4 WELDS EVENLY SPACED .25 .50

NON-VOID ORIENTATION (HORIZONTAL)

VOID ORIENTATION (VERTICAL)

NOTES:

1. //PATTERN DENOTES WELD PLACEMENT
2. CROSSMEMBER AND/OR GUSSETS MUST ADEQUATELY SUPPORT UPPER AIR SPRING PLATE. 20,000 LBS. CAN BE EXERTED THROUGH AIR SPRING BUMPER
3. CROSSMEMBERS AND/OR GUSSET MUST ADEQUATELY SUPPORT SHOCK ABSORBER BRACKETS. LOADS OF UP TO 8,000 LB CAN BE EXERTED THOUGH EACH SHOCK ABSORBER.
4. NOTICE: THE BUSHING TUBE SLEEVE MUST NOT CONTAIN A TRI-FUNCTIONAL BUSHING AT THIS TIME.
5. CAUTION: ALLOW ADEQUATE COOLING BETWEEN WELDS TO PREVENT EXCESSIVE HEATING OF THE TRI-FUNCTIONAL® BUSHING.
6. SEE L64 TRAILER SUSPENSION SYSTEMS WELDING PROCEDURES FOR ADDITIONAL INFORMATION ON BUSHING TUBE ASSEMBLY, CROSS MEMBER, UPPER SHOCK BRACKET AND AIR SPRING MOUNT WELDING PROCEDURES.

CAUTION

CLEARANCE SPECIFICATIONS:

- a) 1.0 INCH MINIMUM REQUIRED BETWEEN TOP OF THE TIRE AND BOTTOM OF TRAILER STRUCTURE WHEN AXLE IS AT FULL JOUNCE.
- b) 2.0 INCHES MINIMUM REQUIRED BETWEEN INSIDE OF TIRE AND TRAILER STRUCTURE FOR LATERAL MOVEMENT.
- c) 1.0 INCH MINIMUM CLEARANCE MUST BE MAINTAINED AROUND AIR SPRING WHEN IT IS AT MAXIMUM DIAMETER.
- d) ALLOW 1.5 INCHES AROUND FORWARD SECTION OF BEAM ASSEMBLY FOR SUSPENSION MOVEMENT.

This Print remains the property of Hendrickson. All information contained thereon is confidential. It is loaned, subject to return on demand and on express condition that it is not to be copied or used directly or indirectly for any purpose other than the purpose for which it has been loaned to you.

HENDRICKSON

TRAILER COMMERCIAL VEHICLE SYSTEMS
2070 INDUSTRIAL PLACE S.E., CANTON, OH 44707-2600 U.S.A.

UNLESS OTHERWISE NOTED:
TOLERANCES ARE: DIMENSIONS ARE: INCHES
X: ± .000
XX: ± .005
XXX: ± .010
ANGULAR: ± .010
DIMENSIONS ADHERE TO ANSI Y14.5M-1982 (REV) ECN NO. BY DATE

DRAWN BY J. HOFER 11-29-21
CHKD BY S. BIRKEY
APPD BY K. ERDMANN

THIS DRAWING IS THE CONFIDENTIAL PROPERTY OF HENDRICKSON

HT300YB SUSPENSION
INSTALLATION

SCALE: .250=1.00 SIZE D PAGE 2 OF 2
DRAWING No. D-35072

P
PRODUCTION