

Australia & New Zealand Region Only



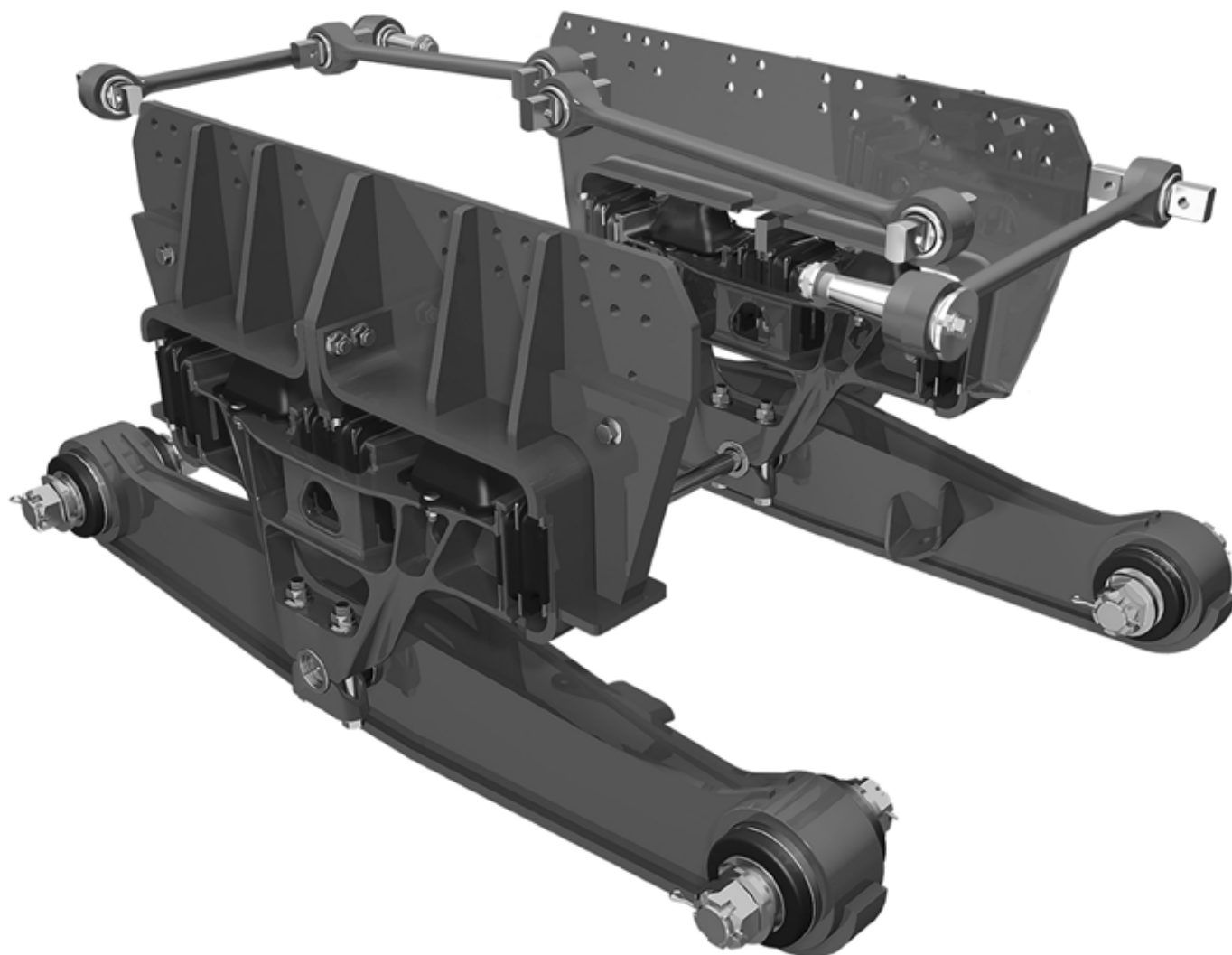
# PARTS LIST

ULTIMAAX® 700 Suspension for Western Star

LIT NO: 97114-145

DATE: June 2023

REVISION: A





## TABLE OF CONTENTS

<b>INTRODUCTION</b>	3
Abbreviations	3
<b>BEAMS, SPRINGS &amp; SHOCKS</b>	4
<b>TORQUE RODS</b>	6
<b>SPECIAL TOOLS</b>	7

### Document Interactivity

The interactive ***Table of Contents*** allows users to quickly navigate to the appropriate page with a single mouse click. The ***INDEX*** button at the bottom of each page returns you to the ***Table of Contents***. Other links within the document are identified by black underlined text, whereas links to external websites are identified by blue underlined text.



## INTRODUCTION

The purpose of this parts list is to document service repair parts and special tools available for the ULTIMAAX® UMX700 suspension systems supplied to Western Star vehicles.

The ULTIMAAX system is capable of extremely high articulation for demanding conditions. The equalising beam design contributes to excellent traction, utilising a central pivot point to distribute load between the axles and help the tyres maintain contact with the road or work site surface.

ULTIMAAX is a low maintenance system that provides reduced life-cycle costs and less down time with:

- Superior ride results in reduced road shock and vibration to the vehicle, contributing to longer service life of the cab, chassis and body equipment.
- No lubrication requirements.
- Progressive load springs provide long service life and are easy to replace.
- Bar pin end bushes designed to extend service life and reduce re-bush overhaul time.

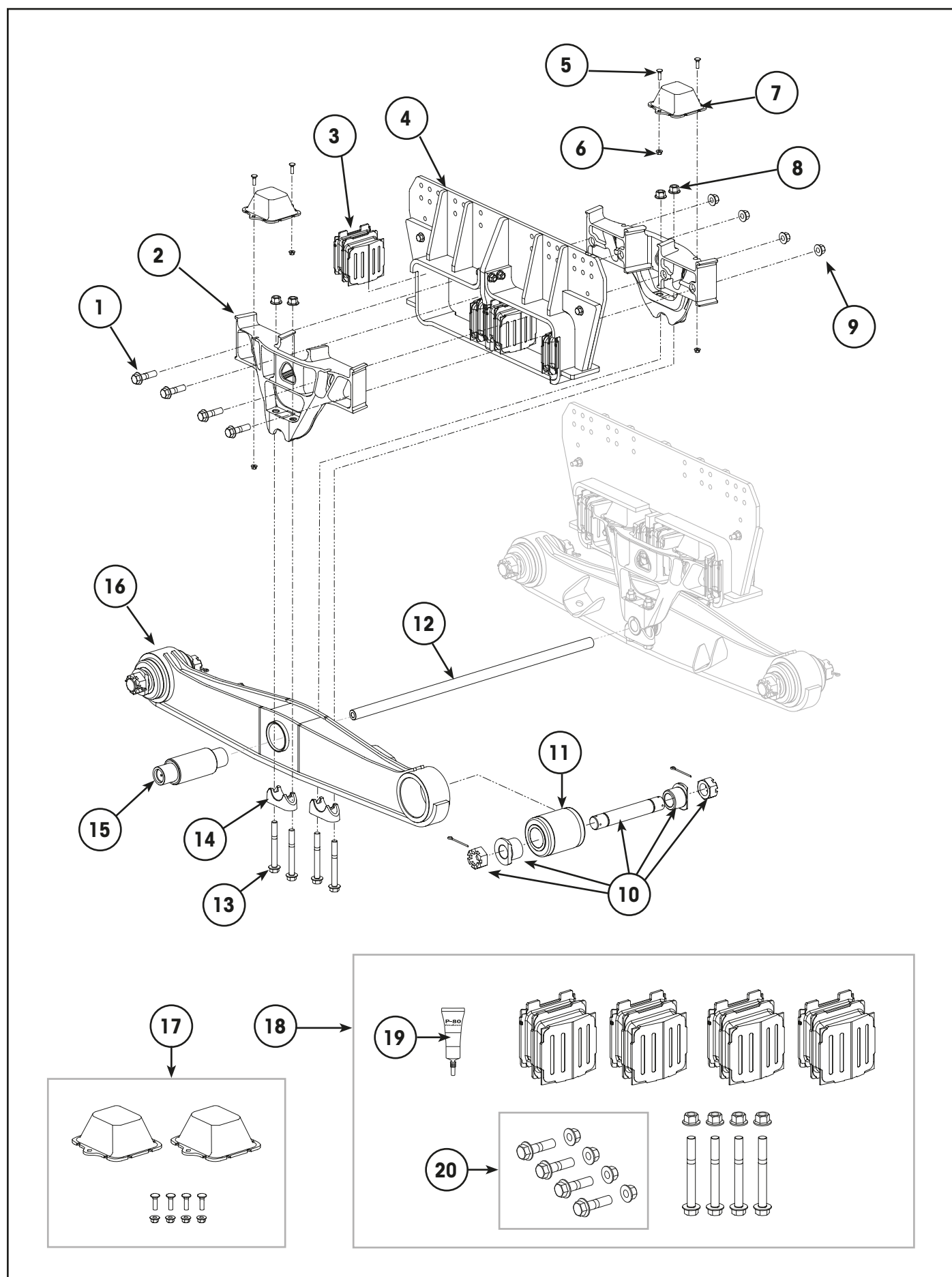
**NOTE:** All quantities listed within this parts list are as applicable for a vehicle.

### Abbreviations

Abbreviations used in this document may include the following terms:

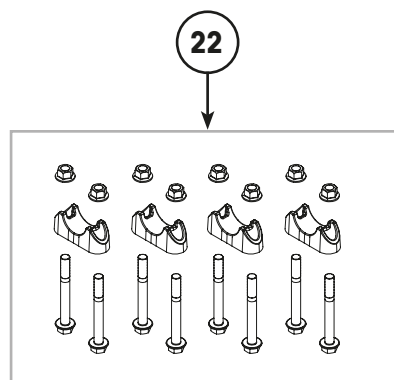
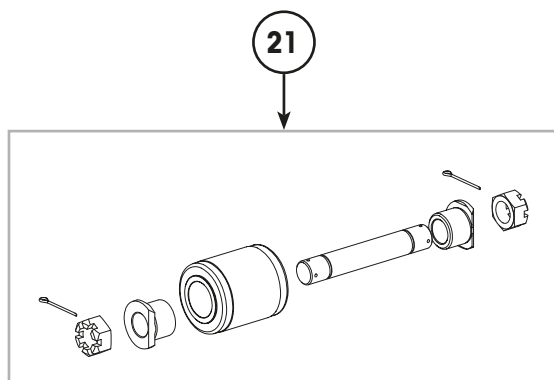
- AR – As Required
- Exc – Except
- NLA – No Longer Available
- NSS – Not Serviced Separately

## BEAMS, SPRINGS & SHOCKS

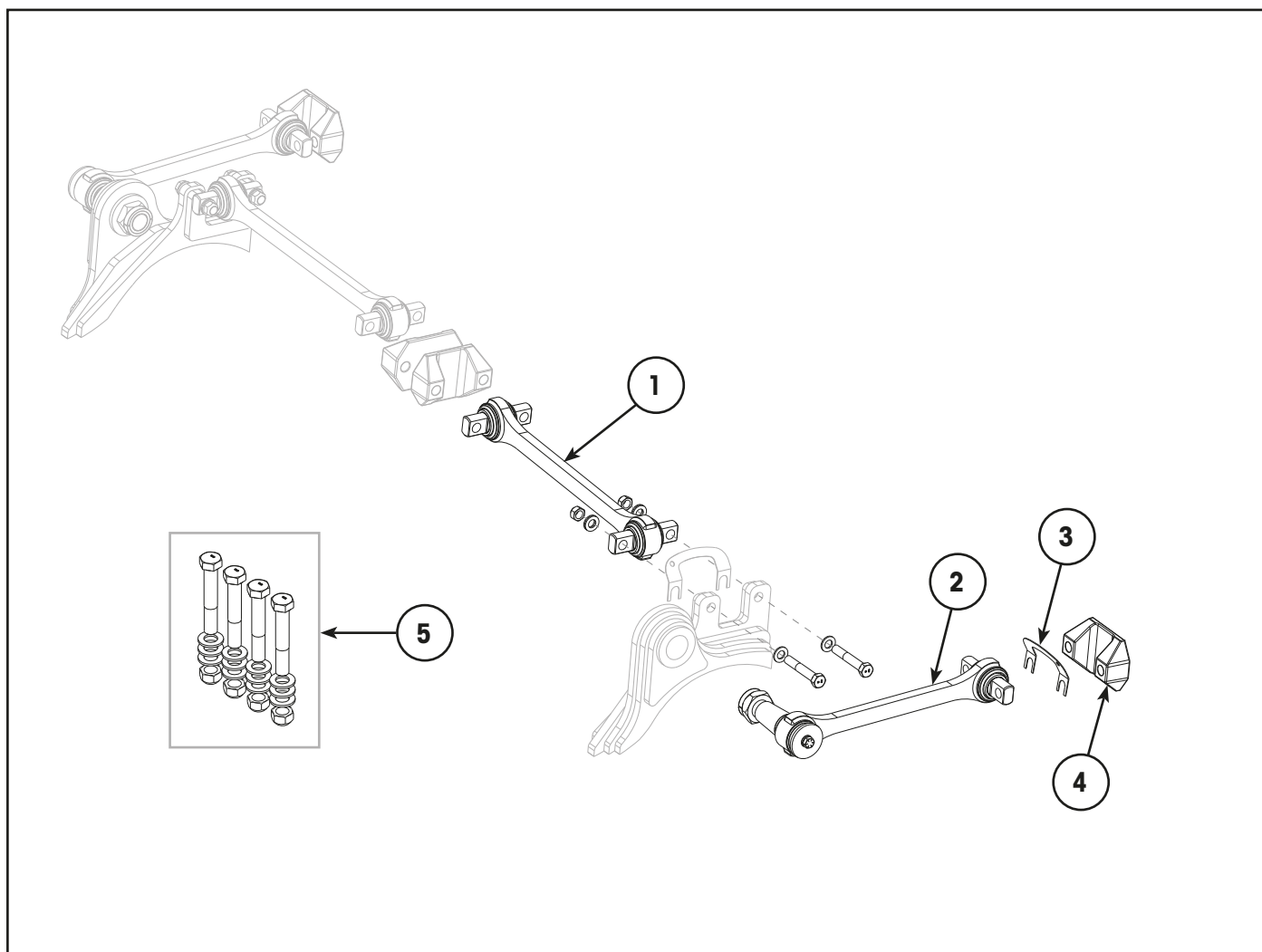


## BEAMS, SPRINGS & SHOCKS

Item	Part Number	Description	Qty	Notes
1	NSS	Flange Bolt, Saddle Fastener – M20 x 1.5 x 75	8	Use item 20. Also included in item 18.
2	80964-001	Saddle Assembly	4	
3	NSS	Shear Spring	8	Use item 18.
4	80821-001	Frame Hanger	2	Hanger only.
5	NSS	Flange Bolt, Load Spring – M10 x 1.5 x 35	8	Use item 17.
6	NSS	Flange Nut, Load Spring – M10 x 1.5	8	Use item 17.
7	NSS	Progressive Load Spring	4	Use item 17.
8	NSS	Flange Nut, Saddle Cap – M20 x 1.5	8	Use item 22. Also included in item 18.
9	NSS	Flange Nut, Saddle Fastener – M20 x 1.5	8	Use item 20. Also included in item 18.
10	21140-004	End Bush Adapter Assembly – 70k 7 Inch	4	Included in end bush service kit item 21.
11	10364-000	End Bush – 70k 7 Inch	4	Included in end bush service kit item 21. Also included in beam assembly, item 16.
12	60961-875	Cross Tube Service Kit – 1140 mm	1	Includes end plug & tube.
13	NSS	Flange Bolt, Saddle Cap – M20 x 1.5 x 175	8	Use item 22. Also included in item 18.
14	NSS	Saddle Cap	4	Use item 22.
15	78676-001P	Centre Bush Assembly – 70k	2	Includes end plug. Included in beam, item 16.
16	80291-600	Equalising Beam	2	Includes centre & end bushes, items 11 & 15..
17	60961-822	Progressive Load Spring Service Kit – One Side	2	Includes load springs, bolts & nuts, items 5, 6 & 7.
18	60961-877	Shear Spring Service Kit – One Side	2	Includes shear springs, saddle fasteners, saddle cap fasteners & lubricant, items 1, 3, 8, 9, 13 & 19.
19	70867-001	P-80 Installation Lubricant	AR	Included in item 18.
20	34013-197	Saddle Fastener Kit – One Side	2	Includes nuts & bolts, items 1 & 9. Also included in item 18.
21	34013-110	End Bush Service Kit – One Wheel End	4	Includes bush and adapter assembly, items 10 & 11.
22	78770-002	Saddle Cap Kit	1	Includes saddle caps & hardware, items 8, 13 & 14.



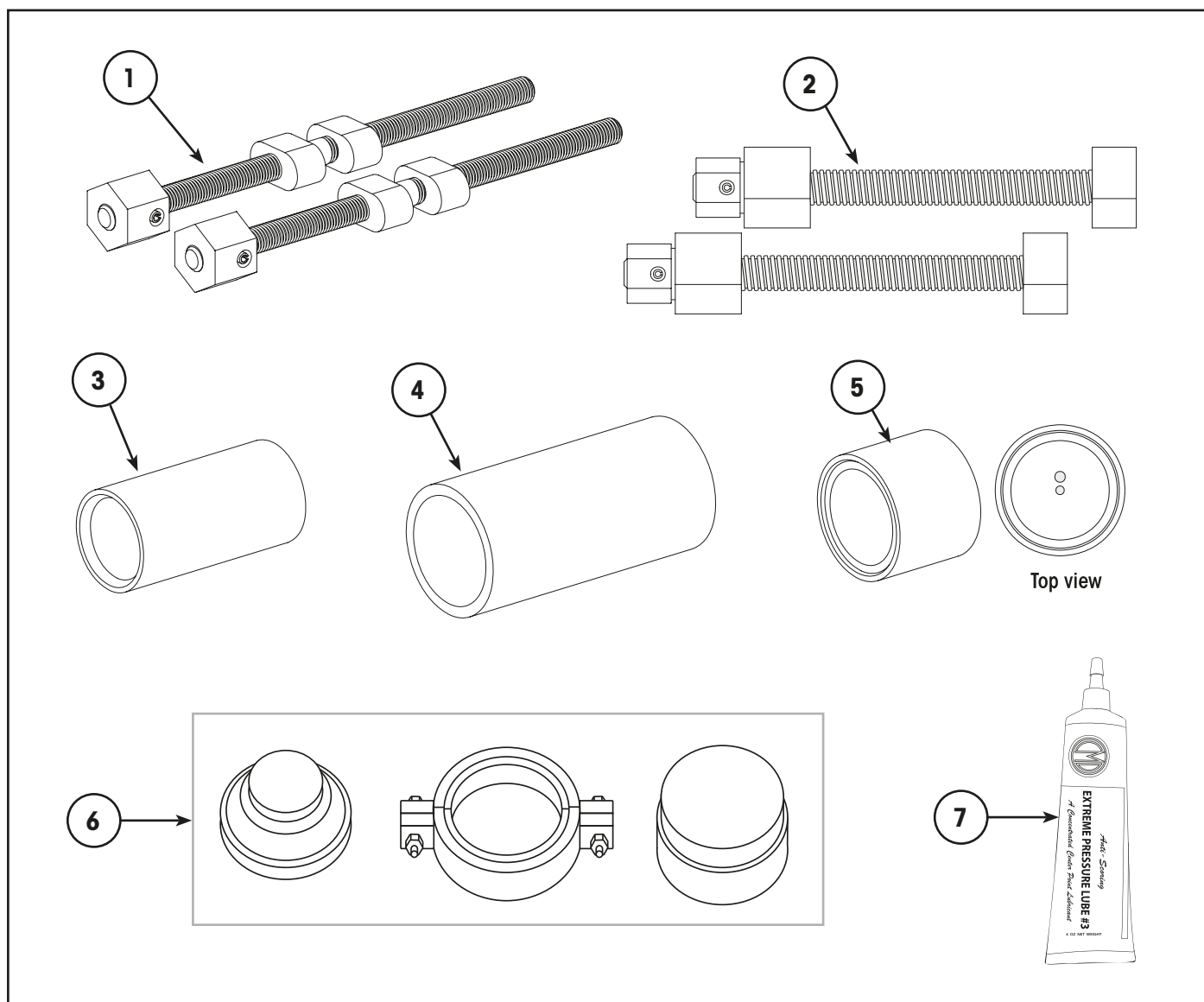
## TORQUE RODS



Item	Part Number	Description	Qty	Notes
1	8232-0000-650	Torque Rod, Longitudinal – 7/8" 650mm	1	[1]
	8232-0000-675	Torque Rod, Longitudinal – 7/8" 675mm	1	[1]
2	8236-0099-535	Torque Rod – Transverse	2	[1]
3	49689-000	Torque Rod Shim	AR	
4	46015-000	Frame Bracket – Torque Rod	4	
5	98111-178	Hardware Kit – Longitudinal Torque Rod	1	For mounting to differential bracket. Torque rod to frame bracket hardware is dealer supply.

**[1] NOTE:** Torque rod bushes are not separately serviceable.

## SPECIAL TOOLS



Item	Part Number	Description	Notes
1	66086-113L	Saddle Disassembly Tool Set	Apply extreme pressure lubricant, item 9, to tool threads before use. Refer to Hendrickson technical bulletin <a href="#">17730-301</a> .  Tools for use with workshop press or hydraulic power equipment.
2	66086-108	Saddle Assembly Tool Set	
3	66086-110	Centre Bush Removal Tool	
4	66086-112	Centre Bush Receiving Tool	
5	66086-107	Centre Bush Installation Tool	
6	66086-101	Adapter Style End Bush Tools	Suits 60k & 70k capacity.
7	S-21337	Extreme Pressure Lubricant	For use with saddle assembly & disassembly tools threads, items 1 & 2. Do not apply to springs or bushes. Refer to Hendrickson technical bulletin <a href="#">17730-301</a> .



REVISIONS TABLE

DATE	REV	PAGE	DESCRIPTION
Jun-2023	A	All	New document to suit ULTIMAAX 700 suspensions fitted to Australian Western Star vehicles.

Actual product performance may vary depending upon vehicle configuration, operation, service and other factors.  
All applications must comply with applicable Hendrickson specifications and must be approved by the respective vehicle manufacturer with the vehicle in its original, as-built configuration.  
Contact Hendrickson for additional details regarding specifications, applications, capacities, and operation, service and maintenance instructions.

Need Help? Call 03 8792 3600 or Email customerservice@hendrickson.com.au

**HENDRICKSON**  
www.hendrickson.com.au

**HENDRICKSON ASIA PACIFIC PTY KTD**  
ABN 21 004 992 769  
32- 44 Letcon Drive, P.O. Box 1063  
Dandenong, Victoria, 3175  
61.3.8792.3600 • Fax 61.3.8792.3699

**HENDRICKSON NEW ZEALAND**  
Unit P, 24 Allright Place  
Mt Wellington, Auckland, 1060  
64.9.570.4721 • Fax 64.9.570.4816