

# **H PARTS LIST**

**SOFTEK® Front Suspension  
with STEERTEK™ NXT Axle for  
Workhorse W56 Medium-duty  
Electric Step Vans**

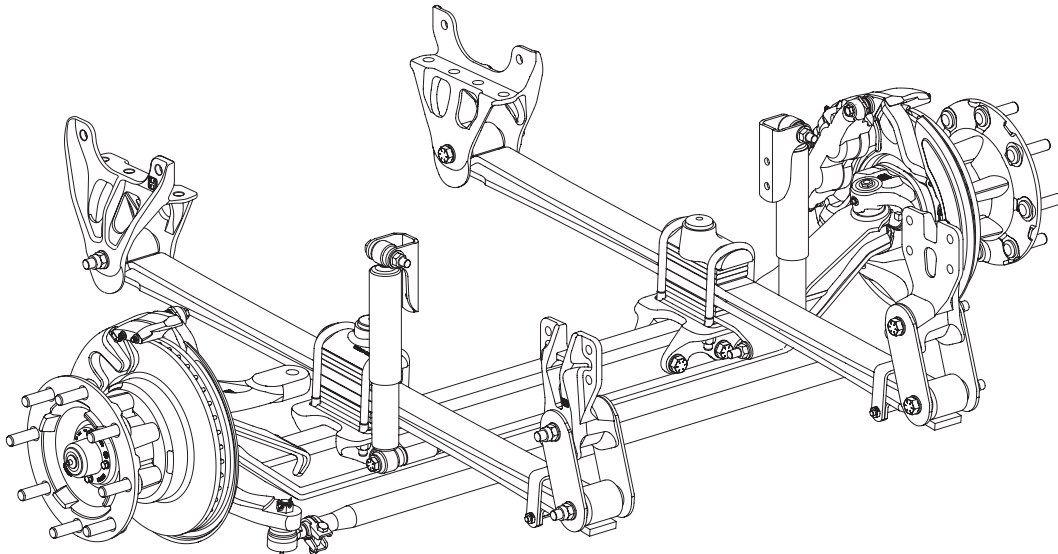
LIT NO: SP-356

DATE: July 2023

REVISION: A

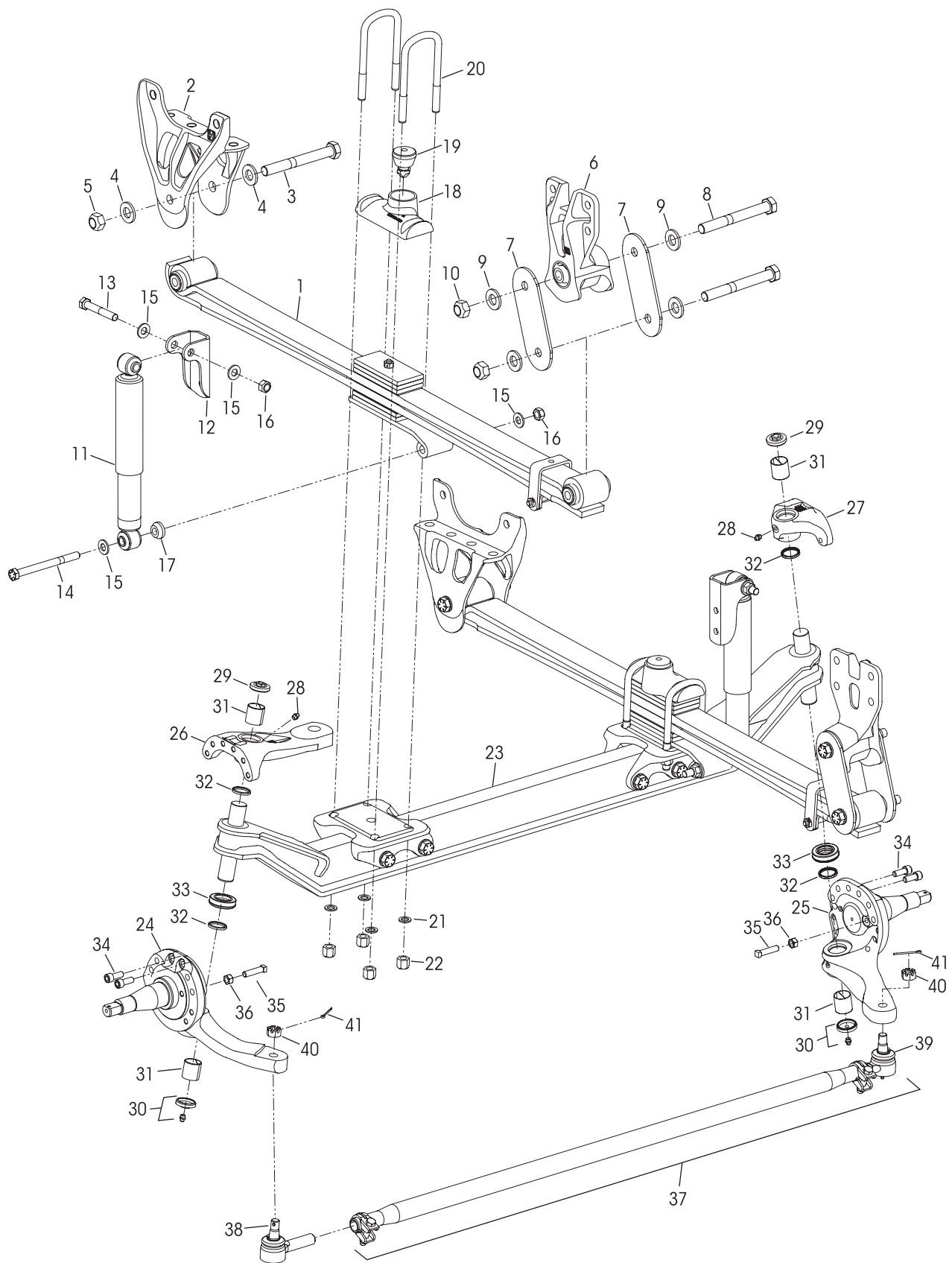
## **CONTENTS**

DESCRIPTION	PAGE
Parts List . . . . .	2
Notes . . . . .	3
Wheel End Assembly with Hydraulic Disc Brakes . .	4



8K Capacity

6.97" (177 mm) Ride Height





# SOFTEK® Front Suspension for Workhorse W56 Electric Step Vans

KEY NO.	PART NO.	DESCRIPTION	VEHICLE QTY.	KEY NO.	PART NO.	DESCRIPTION	VEHICLE QTY.
1	82988-000	Leaf Spring Assembly	2	23	94166-003M	Axle & Kingpin Assembly	1
2	64488-002	Front Hanger	2			Lower Steering Knuckle Assembly, Includes Key Nos. 30-32, 35-36	
	34013-436	<b>Front Spring Eye Fastener Service Kit, One Side,</b> Includes Key Nos. 3-5		24	91221-501	Left Hand	1
3		*3/4"-10 UNC x 7" Hex Bolt	2	25	91221-502	Right Hand	1
4		*3/4" Flat Washer	4			Upper Steering Knuckle Assembly, Includes Key Nos. 28-29, 31-32	
5		*3/4"-10 UNC Locknut	2	26	93605-006	Left Hand	1
6	66510-001	Rear Shackle Bracket Assembly	2	27	94174-001	Right Hand	1
7	64314-001	Rear Shackle Plate	4		34013-448	<b>Kingpin Bushing and Bearing Service Kit, One Side,</b> Includes Key Nos. 28-34 & Loctite	
	34013-476	<b>Rear Shackle Bracket Fastener Service Kit, One Side,</b> Includes Key Nos. 8-10		28	33117-000	Grease Zerk	2
8		*3/4"-16 UNF x 6 1/2" Hex Bolt	4	29	91231-001	Grease Cap Assembly, Upper	2
9		*3/4" Flat Washer	8	30	91233-001	Grease Cap Assembly, Lower	2
10		*3/4"-16 UNF Nylocknut	4	31	91204-0011	Kingpin Bushing	4
11	94144-004	Shock Absorber	2		34013-449	<b>Roller Thrust Bearing Service Kit, One Side,</b> Includes Key Nos. 32-34 & Loctite	
12	94145-100	Upper Shock Absorber Bracket	2	32	91234-001	Kingpin Seal	4
	50754-089	<b>Single Shock Absorber Fastener Service Kit,</b> Includes Key Nos. 13-16		33	91202-001	Roller Thrust Bearing	2
13		*5/8"-11 UNC x 4" Upper Shock Bolt	2	34	60236-004	1/2"-13 UNC Socket Head Cap Screw	4
14		*5/8"-11 UNC x 7" Lower Shock Bolt	2	Not Shown	60937-000	Loctite® (Red) Compound Tube	1
15		*5/8" Flat Washer	6		60961-069	<b>Stop Bolt Service Kit, One Side,</b> Includes Key Nos. 35-36	
16		*5/8"-11 UNC Hex Locknut	4	35		*1/2"-13 UNC Square Head Bolt	2
17	94333-003	Shock Absorber Spacer	2	36		*1/2"-13 UNC Hex Jam Nut	2
	94134-000	Top Pad / Axle Stop Assembly, Includes Key Nos. 18-19		37	91226-005	Tie Rod Assembly, Includes Key Nos. 38-40	1
18		*Top Pad	2			<b>Tie Rod End Service Kits</b>	
19		*Rubber Axle Stop	2		34013-499	<b>Axle Set,</b> Includes Left Hand and Right Hand Kits	
	91430-085	<b>U-bolt Service Kit, One Side,</b> Includes Key No. 20 and Kit No. 48718-504			34013-500	<b>Left Hand,</b> Includes Key Nos. 38, 40-41	
20		*5/8"-18 UNF x 6 1/2" Square U-bolt	4		34013-501	<b>Right Hand,</b> Includes Key Nos. 39-41	
	48718-504	<b>U-bolt Fastener Service Kit, One Side,</b> Includes Key Nos. 21-22				Tie Rod End, Includes Key No. 40	
21		*5/8" Flat Washer	8	38	91226-101	Left Hand	1
22		*5/8"-18 UNF Hex High Nut	8	39	91226-102	Right Hand	1
	94399-001	<b>STEERTEK NXT</b> Axle Assembly Includes Key Nos. 23-41	1	40		*3/4" Castle Nut	2
				41	17800-004	Tie Rod Nut Cotter Pin	2

**NOTES:** Quantities specified are for the vehicle. Quantities of service kit components may vary from the amount shown in the list.

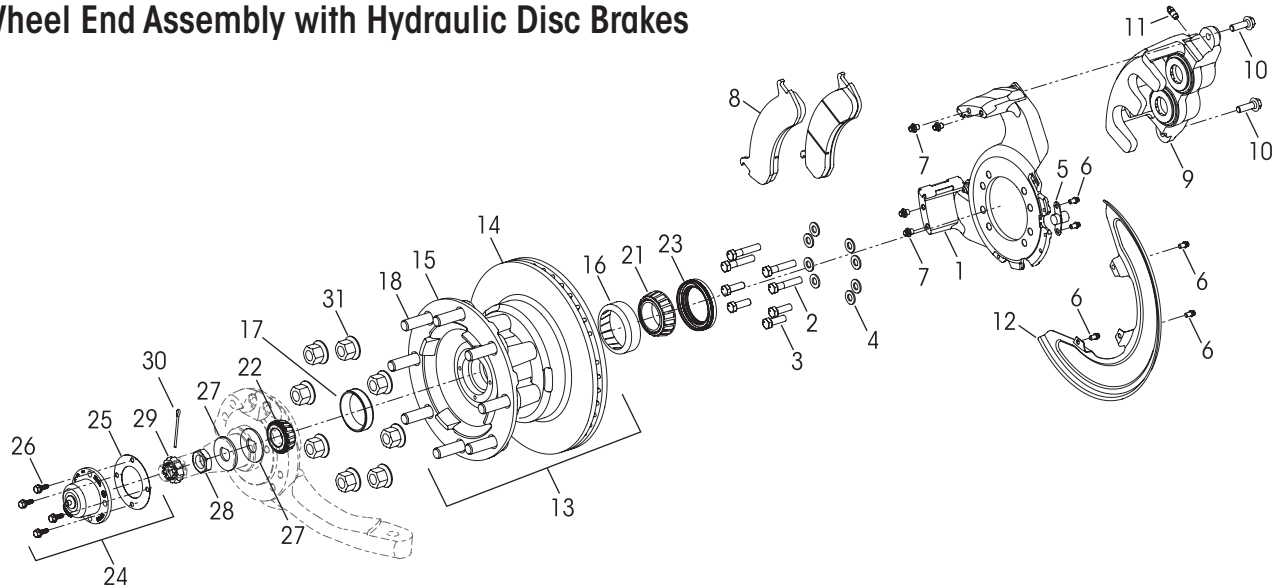
\* Item included in assembly only, part not sold separately.

\*\* These components are installed by Hendrickson for new production assembly but not supplied for aftermarket service purposes. Description and part number listed for reference only. For more information and assistance with service, maintenance and rebuild instructions on these components see below component manufacturers:

- Bosch technical and parts support 888.715.3616 or online [www.boschautoparts.com](http://www.boschautoparts.com)
- DRiV Incorporated parts support 800.325.8886 or online [www.drivparts.com](http://www.drivparts.com)
- SKF parts support 800.533.6563, e-mail: [vsm.aftermarket.custsrv@skf.com](mailto:vsm.aftermarket.custsrv@skf.com), website: [vehicleaftermarket.skf.com](http://vehicleaftermarket.skf.com)
- The Timken Company technical and parts support 866.984.6536 or online [www.timken.com/resources](http://www.timken.com/resources)
- Webb Wheel Products technical and part support 800.633.3256 or online [www.webbwheel.com](http://www.webbwheel.com)

\*\*\* Not supplied by Hendrickson, used for reference only. Contact the vehicle manufacturer for more information.

## Wheel End Assembly with Hydraulic Disc Brakes



KEY NO.	PART NO.	DESCRIPTION	VEHICLE QTY.	KEY NO.	PART NO.	DESCRIPTION	VEHICLE QTY.
1		**Bosch Torque Plate Assembly Left Hand, Part No. 0 204 002 771	1	15		**Hub Assembly Includes Key Nos. 16-17 Part No. 25501-0	2
2	24531-004	½"-13 UNC x 2½" Brake Mounting Hex Bolts (Primary)	8	16		*Inner Bearing Cup	2
3	24531-007	½"-13 UNC x 1½" Brake Mounting Hex Bolts (Secondary)	8	17		*Outer Bearing Cup	2
4	22962-011	½" Hardened Flat Washer	16	18		**M22 Wheel Stud 2.4" Standout Part No. 101193	16
5		**Bosch ABS Sensor Bracket Part No. 0 204 793 126	2	19		**¾" Cap Screw (Not Shown) Part No. 87511	12
6		**5/16"-18 UNC x ½" Lobe Bolt	10	20		**¾" Flat Washer (Not Shown) Part No. 257	12
7	93274-010	M10 x 1.5 Lobe Screw	8	21		**The Timken Company Inner Bearing Cone Part No. JM207049A	2
8	80974-000	**Bosch Brake Pads, Part No. 0 204 816 587	4	22		**The Timken Company Outer Bearing Cone Part No. 25877-01	2
9		**Bosch Hydraulic Disc Brake Caliper Assembly, Part No. 0 204 719 661	2	23		**DRiV Incorporated Wheel Seal Part No. 370150A	2
10		**Bosch M12 x 1.25 x 40 Hex Bolt Part No. 0 204 062 176	4	24		**SKF Hubcap Assembly, Part No. 1608 Includes Key Nos. 25-26	2
11		**7/16" Bleeder Screw, Part No. 0 204 AJ2122	2	25		**Hubcap Gasket Part No. 453868	2
12		**Bosch Dust Shield, Part No. 0 204 793 130	2	26		**Hubcap Bolts Part No. 454304	8
13		**Webb Disc Brake Hub & Rotor Assembly, Includes Key Nos. 14-20, Part No. 25505XX5	2	27		**Spindle Lock Washer	4
14		**Disc Brake Rotor Part No. 54770P-98	2	28	91242-000	1½"-12 Spindle Nut	2
				29	93288-000	Spindle Nut Lock	2
				30	17800-004	Spindle Nut Cotter Pin	2
				31		***M22 x 1.5 Lug Nut	16

For all (\*) see Notes on Page 3

This is a general parts list to provide directional information. Components may vary by model. Questions in regards to parts, contact Hendrickson Truck Parts at 855.743.3733 (Toll-free U.S. and Canada), 630.910.2800 (Outside U.S. and Canada) or email: truckparts@hendrickson-intl.com.

Actual product performance may vary depending upon vehicle configuration, operation, service and other factors.

All applications must comply with applicable Hendrickson specifications and must be approved by the respective vehicle manufacturer with the vehicle in its original, as-built configuration. Contact Hendrickson for additional details regarding specifications, applications, capacities, and operation, service and maintenance instructions.

**Call Hendrickson at 630.910.2800 or 855.RIDERED (855.743.3733) for additional information.**



www.hendrickson-intl.com

**TRUCK COMMERCIAL VEHICLE SYSTEMS**  
800 South Frontage Road  
Woodridge, IL 60517-4904 USA  
855.743.3733 (Toll-free U.S. and Canada)  
630.910.2800 (Outside U.S. and Canada)  
Fax 630.910.2899

SP-356 Rev A 07-23

© 2023 Hendrickson USA, L.L.C. All Rights Reserved. All trademarks shown are owned by Hendrickson USA, L.L.C., or one of the affiliates, in one or more countries.

Information contained in this literature was accurate at the time of publication. Product changes may have been made after the copyright date that are not reflected.

Printed in United States of America