

H PARTS LIST

SOFTEK® Front Suspension System for Xos Medium-duty Electric Truck Vehicles

LIT NO: SP-343

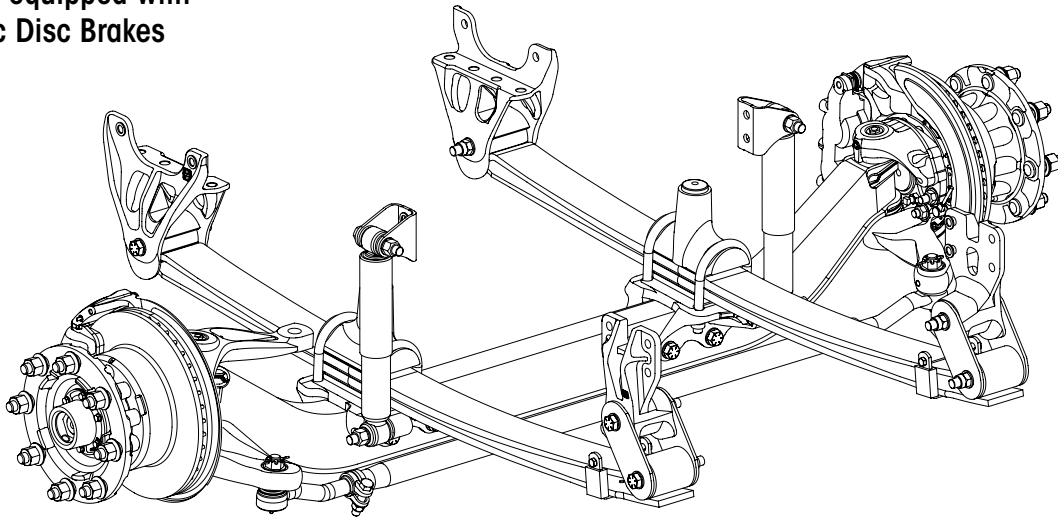
DATE: October 2022

REVISION: C

CONTENTS

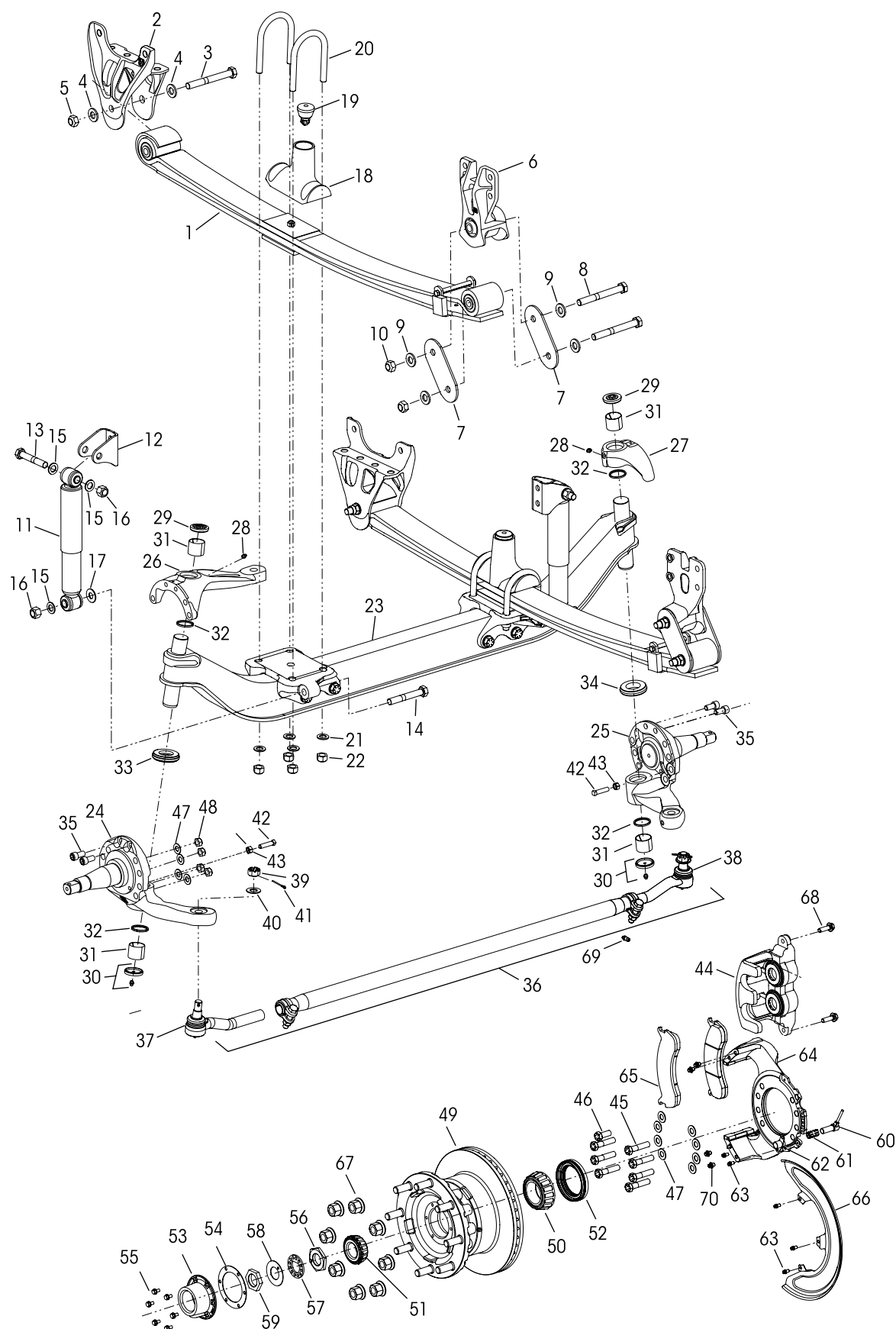
DESCRIPTION	PAGE
Parts List	2
Special Tool	4
Notes	4

**SOFTEK® equipped with
Hydraulic Disc Brakes**



10K Capacity

5.8" (148 mm) Ride Height





KEY NO.	PART NO.	DESCRIPTION	VEHICLE QTY.	KEY NO.	PART NO.	DESCRIPTION	VEHICLE QTY.
1	82705-000	Leaf Spring Assembly	2	32	68731-000	Kingpin Seal	4
2	64488-002	Front Hanger	2	33	59828-000	Left Hand Composite Thrust Bearing	1
	34013-436	Front Spring Eye Fastener Service Kit, One Side, Includes Key Nos. 3-5		34	64256-000L	Right Hand Roller Thrust Bearing	1
3		*¾"-10 UNC x 7" Hex Bolt	2	35	60236-001	⅝"-11 UNC Socket Head Cap Screw	4
4		*¾" Flat Washer	4	Not Shown	60937-000	Loctite® (Red) Compound Tube	1
5		*¾"-10 UNC Locknut	2	36	76878-003	Tie Rod Assembly, Drop, Includes Key Nos. 37-39	1
6	66510-001	Rear Shackle Bracket Assembly	2		60961-737	Tie Rod End Service Kits	
7	64314-000	Rear Shackle Plate	4		60961-739	Axle Set, Includes Kit Nos. 60961-739 & -740	
	34013-476	Rear Shackle Bracket Fastener Service Kit, One Side, Includes Key Nos. 8-10			60961-740	Left Hand, Includes Key Nos. 37, 39-41	
8		*¾"-16 UNF x 6½" Hex Bolt	4			Right Hand, Includes Key Nos. 38-41	
9		*¾" Flat Washer	8			Tie Rod End, Includes Key No. 41	
10		*¾"-16 UNF Nylocknut	4	37	76875-001	Left Hand	1
11	58913-009L	Shock Absorber	2	38	76875-002	Right Hand	1
12	59423-002	Upper Shock Absorber Bracket	2	39		*⅞" Castle Nut	2
	34013-437	Single Shock Absorber Fastener Service Kit, Includes Key Nos. 13-17		40	22962-007	⅞" Flat Washer	2
13	58917-022	¾"-10 UNC x 4½" Upper Shock Bolt	2	41	17800-004	Tie Rod Nut Cotter Pin	2
14	50764-008	¾"-10 UNC x 5" Lower Shock Bolt	2		60961-069	Stop Bolt Service Kit, One Side, Includes Key Nos. 42-43	
15	22962-001	¾" Flat Washer	6	42		*½"-13 UNC Square Head Bolt	2
16	49842-000	¾"-10 UNC Hex Locknut	4	43		*½"-13 UNC Hex Jam Nut	2
17	22962-046	Shock Absorber Spacer	2	44		**Bosch Brake Caliper Assembly, Part No. 0204719661	2
	64506-000	Top Pad / Axle Stop Assembly, Includes Key Nos. 18-19		45		***⅝"-11 UNC x 2¾" Hex Bolt (Torque Plate)	14
18	64519-000	Top Pad	2	46		***⅝"-11 UNC x 1½" Hex Bolt (Torque Plate)	2
19	64080-000	Rubber Axle Stop	2	47	22962-036	⅝" Hardened Washer (Torque Plate)	24
	91430-074	U-bolt Service Kit, One Side, Includes Key No. 20 and Kit No. 48718-515		48	47764-000	⅝"-11 UNC Locknut (Torque Plate)	8
20		¾"-16 UNF x 6½" U-bolt	4	49		**Webb® Hub and Rotor Assembly, Part No. 25685XW3	
	48718-515	U-bolt Fastener Service Kit, One Side, Includes Key Nos. 21-22		50		**Timken Inner Bearing One side, Set No. 413	
21		¾" Flat Washer	8	51		**Timken Outer Bearing One Side, Set No. 406	
22		¾"-16 UNF Hex Locknut	8	52		**Federal-Mogul Wheel Seal, M380001TX0	
	80919-001	STEERTEK NXT Axle Assembly Includes Key Nos. 23-44	1	53		**Stemco Hubcap Assembly - 6", Kit No. 343-4024	2
23	68986-007M	Axle & Kingpin Assembly	1	54		**Stemco Hubcap Gasket Part No. 330-3024	2
		Lower Steering Knuckle Assembly, Includes Key Nos. 30-32, 42-43		55	64545-002	⅝"-18 UNC x ¾" Hex Bolt (Hubcap) with Retainer Washer	12
24	58900-253	Left Hand	1	56		**Meritor 1½"-12 UNF Inner Wheel Bearing Adj. Nut Part No. 1227-U-541	2
25	58900-254	Right Hand	1	57		**Meritor ¾" Wheel End Lock Ring Part No. 1229-G-475	2
		Upper Steering Knuckle Assembly, Includes Key Nos. 28-29, 31-32		58		**Meritor 0.05" Wheel End Lock Washer Part No. 1229-F-474	2
26	60903-258	Left Hand	1	59		**Meritor Wheel End Outer Nut No. 1227-B-106	2
27	60904-202	Right Hand	1	60		**Wabco ABS Sensor Hydraulic Brake Kit 441-030-9102 (Includes Clip Key No 62)	2
		Kingpin Bushing and Bearing Service Kits		61		**Wabco ABS Sensor Clip	2
	60961-628	Axle Set, Includes Kit Nos. 60961-629 & -630		62		**Bosch ABS Sensor Bracket 0 204 793 126	2
	60961-629	Left Hand with Composite Thrust Bearing, Includes Key Nos. 28-33, 35 & Loctite		63	93398-001	⅝"-18 UNC x ½" Lobe Bolt	10
	60961-630	Right Hand with Roller Thrust Bearing, Includes Key Nos. 28-32, 34-35 & Loctite		64		**Bosch Torque Plate Left Hand 0 204 864 363 Right Hand 0 204 864 364	2
28	33117-000	Grease Zerk	2	65		**Bosch Brake Pads 0204816587	4
29	68687-003	Grease Cap Assembly, Upper	2	66		**Bosch Dust Shield 0 204 793 130	2
30	68687-002	Grease Cap Assembly, Lower	2	67		***M22 x 1.5 Lug Nut	16
31	58909-001	Kingpin Bushing	4	68		**Bosch M12 x 1.25 x 40 mm Hex Bolt 0204062176	4
		Thrust Bearing Service Kits		69		***⅞" Bleeder Screw 0204AJ2122	2
	60961-631	Axle Set, Includes Kit Nos. 60961-632 & -633		70	93274-010	M10 x 1.5-6G Lobe Screw	8
	60961-632	Left Hand Composite Thrust Bearing, Includes Key Nos. 32-33, 35 & Loctite					
	60961-633	Right Hand Roller Thrust Bearing, Includes Key Nos. 32, 34-35 & Loctite					

■ Special Tool

KINGPIN BUSHING TOOL – ADJUSTABLE STRAIGHT FLUTE REAMER

The dimension of cutting diameter must facilitate a range of **1.802"-1.812"**



NOTES: * Item included in assembly only, part not sold separately.

- ** Not supplied by Hendrickson for aftermarket service purposes. Description and part number listed for reference only. For more information and assistance with service, maintenance and rebuild instructions on these components see below component manufacturers:
- Bosch technical and parts support 888.715.3616 or online at www.boschautoparts.com
 - Federal Mogul technical and parts support 800.325.8886 or online at www.drivparts.com
 - Meritor technical and parts support 888.725.9355 or online, parts (www.meritorpartsexpress.com), technical support (www.meritorbullpen.com)
 - Stemco technical and part support 800.527.8492 or online at www.stemco.com
 - Timken at technical and part support 866.984.6536 or online at www.timken.com/resources or Timken YouTube series, Timken Tricks of the Trade (Installing a Timken Set-Right Bearing)
 - WABCO technical and parts support 855.228.3203 or online at www.wabco-customercentre.com
 - Webb technical and part support 800.633.3256 or online at www.webbwheel.com
- *** Not supplied by Hendrickson, used for reference only. Contact the vehicle manufacturer for more information.

This is a general parts list to provide directional information. Components may vary by model. Questions in regards to parts, contact Hendrickson Truck Parts at 1.866.755.5968 (Toll-free U.S. and Canada), 630.910.2800 (Outside U.S. and Canada) or email: truckparts@hendrickson-intl.com.

Actual product performance may vary depending upon vehicle configuration, operation, service and other factors.

All applications must comply with applicable Hendrickson specifications and must be approved by the respective vehicle manufacturer with the vehicle in its original, as-built configuration. Contact Hendrickson for additional details regarding specifications, applications, capacities, and operation, service and maintenance instructions.

Call Hendrickson at 1.866.755.5968 (toll-free) or 1.630.910.2800 for additional information.



www.hendrickson-intl.com

TRUCK COMMERCIAL VEHICLE SYSTEMS
 800 South Frontage Road
 Woodridge, IL 60517-4904 USA
 1.866.755.5968 (Toll-free U.S. and Canada)
 1.630.910.2800 (Outside U.S. and Canada)
 Fax 1.630.910.2899

SP-343 Rev C 10-22

© 2021 – 2022 Hendrickson USA, L.L.C. All Rights Reserved. All trademarks shown are owned by Hendrickson USA, L.L.C., or one of the affiliates, in one or more countries.

Information contained in this literature was accurate at the time of publication. Product changes may have been made after the copyright date that are not reflected.

Printed in United States of America