

PARTS LIST

STEERTEK™ NXT High Capacity Front Steer Axle and Integrated Suspension System for Lion Electric Type D Buses

LIT NO: SP-348

DATE: August 2023

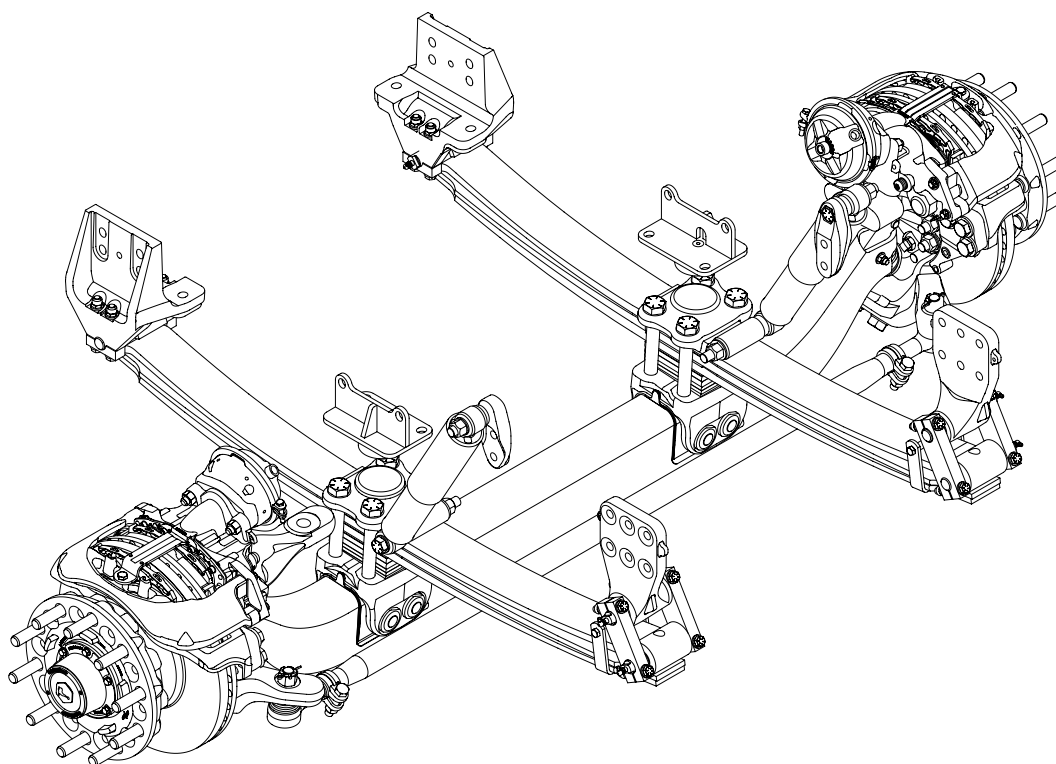
REVISION: B

CONTENTS

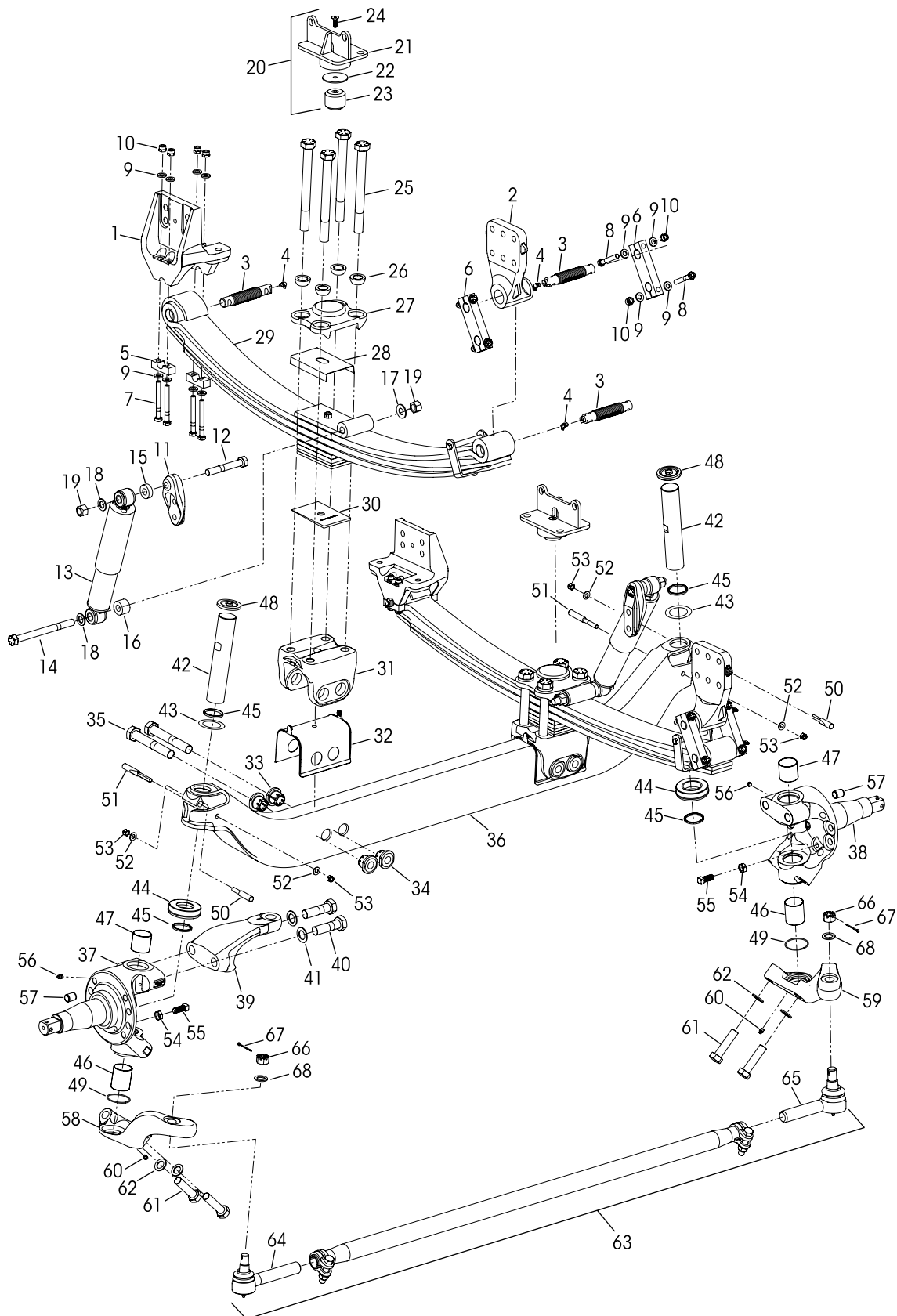
DESCRIPTION	PAGE
-------------	------

Parts Lists

- | | |
|--|---|
| ■ Suspension • Axle • Clamp Group Assembly . . | 2 |
| ■ Air Disc Brake Assembly | 4 |



■ 16K CAPACITY



STEERTEK™ NXT High Capacity Steer Axle Suspension System for Lion Electric Type D Buses

KEY NO.	PART NO.	DESCRIPTION	VEHICLE QTY.	KEY NO.	PART NO.	DESCRIPTION	VEHICLE QTY.
1	79894-001	Frame Hanger Assembly Front	2	33		*Axle Collar Non Threaded	4
2	80159-001	Rear with Bushing	2	34		Threaded	4
		Frame Hanger Fastener Service Kit, One Side		35		*1"-8 UNC x 6½" Hex Thru Bolt	4
	34013-247	Front, Includes Key Nos. 5-7, 9-10			93160-001	STEERTEK NXT High Capacity Axle Assembly Includes Key Nos. 36-68	
	34013-248	Rear, Includes Key Nos. 3-4, 6, 8-10		36	77284-012	Axle	1
	34013-249	Single Threaded Pin and Grease Zerk Service Kit, Includes Key Nos. 3-4				Knuckle Assembly, Includes Key Nos. 45, 54-57	
3		*Threaded Pin	6	37	77243-001	Left Hand	1
4		*Grease Fitting	6	38	77243-102	Right Hand	1
5	79843-000	Front Hanger Bottom Cap	4	39	77337-003	Steering Arm	1
6	79888-001	Rear Shackles	4	40	30550-027	1"-14 UNF x 3½" Hex Bolt	2
7	80362-001	½"-20 UNF x 4½" Bolt	8	41	22962-051	1" Flat Washer	2
8	80362-002	½"-20 UNF x 3¼" Bolt	8		34013-230	Kingpin Service Kit, One Side	
9	22962-014	½" Hardened Washer	32			Includes Key Nos. 42, 43a, 44-53, 61-62	
10	17700-034	½"-20 UNF Nylocknut	16	42		*Kingpin	2
11	78250-002	Shock Bracket	2	43		Kingpin Shim (As needed for service)	2
12	50764-019	¾"-10 UNC x 4½" Upper Shock Bolt	2	a	77241-002	0.01" Thickness	
	34013-250	Single Shock Fastener Service Kit, Includes Key Nos. 13-19		b	77241-003	0.02"	
13	60998-002L	Shock Absorber	2	44	75918-001	Thrust Bearing	2
14	50764-020	¾"-10 UNC x 8" Lower Shock Hex Bolt	2	45	75966-001	Kingpin Seal	4
		Shock Spacer	2			Kingpin Bushing	
15	59946-005	3 mm, Upper		46	75919-001	Lower, 2½" Length	2
16	59946-006	13.2 mm, Lower Outboard		47	75919-002	Upper, 2" Length	2
17	59946-013	6.75 mm, Lower Inboard		48	77209-001	Grease Cap	2
18	22962-001	¾" Flat Washer	4	49	68303-004	O-Ring	2
19	49842-000	¾"-10 UNC Locknut	4			Kingpin Draw Key	
20		Jounce Stop Assembly, Includes Key Nos. 21-24	2	50	75925-001	Upper, 3¾" Length	2
	79854-000	Left Hand		51	75925-002	Lower, 4¾" Length	2
	79855-000	Right Hand		52	22962-054	7/16" Flat Washer	4
21		*Jounce Stop	2	53	17700-008	7/16"-14 UNC-2B Locknut	4
22		*Spacer	2	54	17491-023	¾"-11 UNC-2B Jam Nut	2
	34013-505	Jounce Stop Service Kit, One Side, Includes Key Nos. 23-24		55	93334-001	¾"-11 UNC x 1½" Set Screw	2
23		*Rubber Bump Stop	2	56	33117-000	Grease Zerk	2
24		*M10 x 1.5 x 30 mm Flat Socket Cap Screw	2	57	64246-000	ABS Sensor Sleeve	2
	93181-000	Leaf Spring & Clamp Group Assembly, Includes Key Nos. 25-35	2			Tie Rod Arm Assembly, Includes Key No. 60	
	34013-278	Clamp Group Service Kit, One Side, Includes Key Nos. 25-26, 28		58	77244-037	Left Hand	1
25	64107-002	1"-8 UNC x 7" Hex Bolt	8	59	77244-038	Right Hand	1
26	78356-002	1" Spherical Washer	8	60	33117-000	Grease Zerk	2
27	78888-000	Top Pad	2	61	30418-014	7/8"-14 UNF x 3½" Hex Bolt	4
28	79273-001	Spring Liner	2	62	22962-002	7/8" Flat Washer	4
29	82643-000	Leaf Spring Assembly, Includes Key Nos. 3 & 4		63	80721-003	Tie Rod Assembly, Includes Key Nos. 64-66	1
30	80143-001	Caster Wedge - 2°	2			Tie Rod End Service Kits,	
31	77232-000	Axle Seat	2		60961-890	Axle Set, Includes Kit Nos. 60961-889 and -888	
	34013-229	Axle Clamp Collar Service Kit, One Side Includes Key Nos. 32-35			60961-889	Left Hand, Includes Key Nos. 64, 66-68	
32	78887-001	Axle Seat Liner	2		60961-888	Right Hand, Includes Key Nos. 65-68	
						*Tie Rod End, Includes Key No. 66	
				64	80745-001	Left Hand	1
				65	80745-002	Right Hand	1
				66		*7/8"-14 UNF-2A Castle Nut	2
				67		*Cotter Pin	2
				68		*7/8" Flat Washer	2

NOTES: * Item included in assembly only, part not sold separately.

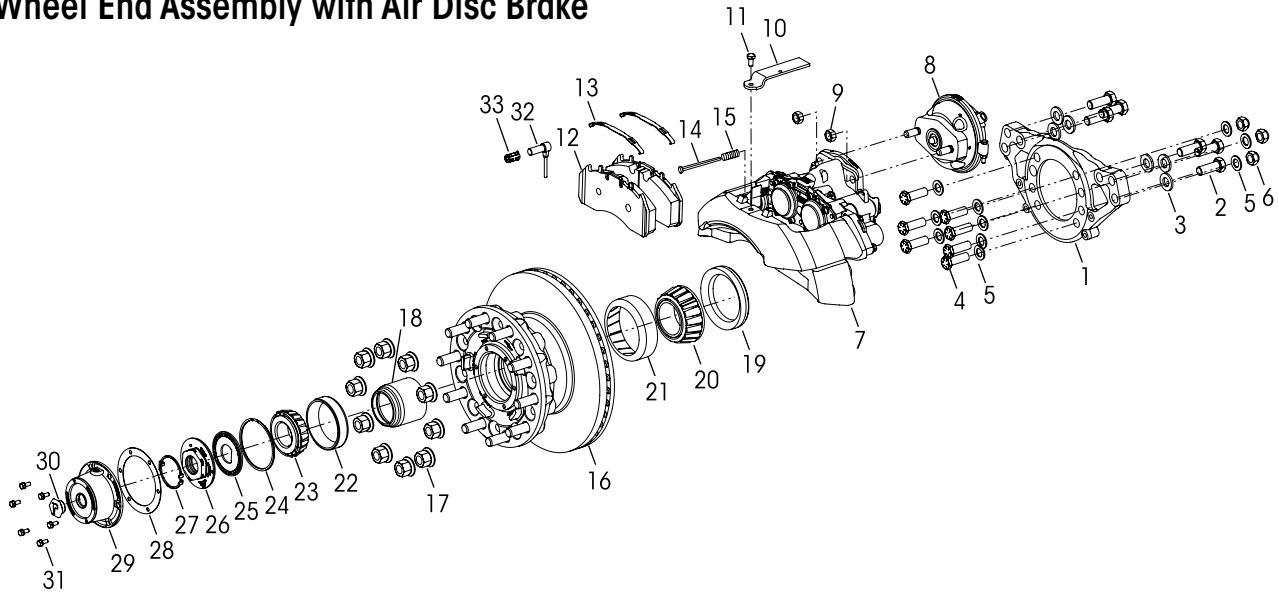
** These components are installed by Hendrickson for new production assembly but not supplied for aftermarket service purposes. Description and part number listed for reference only. For more information and assistance with service, maintenance and rebuild instructions on these components see below component manufacturers:

- CONMET technical and parts support 800.547.9473 or online aftermarket.conmetwheelends.com/hub-selection
- DRIVPARTS technical and parts support 800.334.3210 or online www.drivparts.com
- MERITOR technical and parts support 888.725.9355, or online for parts: www.meritorpartsexpress.com and for technical support: www.meritorbullpen.com
- WABCO technical and parts support 855.228.3203 or online www.wabco-customercentre.com

*** Not supplied by Hendrickson, used for reference only. Contact the vehicle manufacturer for more information.



Wheel End Assembly with Air Disc Brake



KEY NO.	PART NO.	DESCRIPTION	VEHICLE QTY.
1		**Meritor Torque Plate Assembly Left Hand, Part No. 3215-E-2475 Right Hand, Part No. 3215-F-2476	1 1
2	SA-13200-2	M20 x 55 mm Hex Head Screw	12
3	58246-007	M20 Flat Washer	12
4		*3/4"-16 UNC x 2 1/4" Low Profile Hex Head Bolt	14
5		*3/4" Flat Washer	20
6		*3/4"-16 UNC Hex Locknut	6
7		**Meritor Air Disc Brake Caliper Assembly, Includes Key Nos. 10-11, 14-15 Left Hand, Part No. EX225L261XX000 Right Hand, Part No. EX225L262XX000	1 1
8		**Wabco T20 Air Brake Chamber, Includes Key No. 9 Left Hand, Part No. 423 505 151 0 Right Hand, Part No. 423 505 150 0	1 1
9		**Hex Locknut **Meritor Disc Pad Retainer Kit 225270, Includes Key Nos. 10-11	4
10		**Pad Retainer	
11		**Pad Retainer Bolt **Meritor Air Disc Brake Pad Kit 2252L2CG, Includes Key Nos 12-13	
12		**Air Disc Brake Pad	
13		**ADB Pad Spring **Meritor Wear Indicator Kit 225224, Includes Key Nos. 14-15	
14		**Wear Indicator	
15		**Wear Indicator Spring	

KEY NO.	PART NO.	DESCRIPTION	VEHICLE QTY.
16		**Conmet Hub and Rotor Assembly Part No. 10083224, Includes Bearings and Seals **Conmet Brake Rotor Replacement Kit No. 10082181, One Wheel End, Includes Rotor and 10 of each Cap Screws and Washers	2
17		***M22 x 1.5 Two-piece Wheel Nut **Conmet Hub Bearing Rebuild Kit No. 10081728, One Wheel End, Includes Key Nos. 18-23 **Conmet Wheel Seal Kit No. 10081519, One Wheel End, Includes Key Nos. 18-19	20
18		**Bearing Spacer Part No. 10034342	
19		**Wheel Seal Part No. 10045883	
20		**Inner Bearing Cone Part No. 10041922	
21		**Inner Bearing Cup Part No. 10041921	
22		**Outer Bearing Cup Part No. 10041923	
23		**Outer Bearing Cone Part No. 10041924 **Conmet Preset Plus FL Nut Assembly Kit No. 10036550, Includes Key Nos. 24-27	
24		**Snap Ring - Double Wind Part No. 10033288	
25		**Spindle Nut Lockwasher Part No. 10031171	
26		**Outer Spindle Nut Part No. 10031170	
27		**Snap Ring Retainer Part No. 10031172	
28		**Drivparts Hub Cap Gasket No. G-3009	2
29		**Drivparts Hub Cap Part No. 343-009, Includes Key No. 30	2
30		**Rubber Plug	
31	64545-002	5/16"-18 UNC x 3/4" Hex Bolt with Retained Washer	12
32		**WABCO ABS Sensor Part No. 441-032-900-0	2
33	64550-000	ABS Sensor Clip	2

For all (*) see Notes on Page 3

This is a general parts list to provide directional information. Components may vary by model. Questions in regards to parts, contact Hendrickson Truck Parts at 1.866.755.5968 (Toll-free U.S. and Canada), 630.910.2800 (Outside U.S. and Canada) or email: truckparts@hendrickson-intl.com during normal office hours.

Actual product performance may vary depending upon vehicle configuration, operation, service and other factors.

All applications must comply with applicable Hendrickson specifications and must be approved by the respective vehicle manufacturer with the vehicle in its original, as-built configuration. Contact Hendrickson for additional details regarding specifications, applications, capacities, and operation, service and maintenance instructions.

Call Hendrickson at 1.866.755.5968 (toll-free) or 1.630.910.2800 for additional information.



www.hendrickson-intl.com

TRUCK COMMERCIAL VEHICLE SYSTEMS
800 South Frontage Road
Woodridge, IL 60517-4904 USA
1.866.755.5968 (Toll-free U.S. and Canada)
1.630.910.2800 (Outside U.S. and Canada)
Fax 1.630.910.2899

SP-348 Rev B 08-23

© 2022 – 2023 Hendrickson USA, L.L.C. All Rights Reserved. All trademarks shown are owned by Hendrickson USA, L.L.C., or one of the affiliates, in one or more countries.

Information contained in this literature was accurate at the time of publication. Product changes may have been made after the copyright date that are not reflected.

Printed in United States of America