

Asia Pacific Region Only

PARTS LIST INTRAAX® EDT Trailer Suspension

LIT NO: 97114-114

DATE: October 2024

REVISION: D





TABLE OF CONTENTS

INTRODUCTION	3
ABBREVIATIONS	3
AXLE AND SUSPENSION IDENTIFICATION	4
AXLE ID PLATE	4
MANUFACTURING PLANT IDENTIFIER	4
DATE OF MANUFACTURE	4
MANUFACTURING SEQUENCE NUMBER	4
SUSPENSION ASSEMBLY NUMBER PLATE	5
ASSEMBLY NUMBER	5
RIDE HEIGHT LABEL	5
AXLE ASSEMBLY	6
HALFTRAAX™ ASSEMBLY COMPONENTS	6
HALFTRAAX SPINDLE IDENTIFICATION	6
FRAME HANGER IDENTIFICATION	7
FRAME HANGER & PIVOT	8
AIR SPRINGS	10
AIR SPRING IDENTIFICATION	10
AIR SPRINGS & HARDWARE	11
SHOCK ABSORBERS & HARDWARE	12
HEIGHT CONTROL VALVE	14
HCV LINKAGE IDENTIFICATION	14
HEIGHT CONTROL VALVE	15
AXLE LIFT SYSTEM CONTROL	16
LIFT AXLE CONTROL VALVE	17
UBL™ AXLE LIFT SYSTEM HARDWARE	18
AXLE REBOUND LIMITER	19
SPECIAL TOOLS	21
REVISIONS TABLE	22

Document Interactivity

The interactive **Table of Contents** allows users to quickly navigate to the appropriate page with a single mouse click. The **INDEX** button at the bottom of each page returns you to the **Table of Contents**. Other links within the document are identified by black underlined text, whereas links to external websites are identified by blue underlined text.



INTRODUCTION

The purpose of this parts list is to document the available repair parts, accessories, special tools and lubricants available for the Hendrickson EDT300 INTRAAX® (Integrated Axle Assembly) suspension systems. EDT suspensions are available with optional chain Axle Rebound Limiter (ARL), additional shock absorbers mounted towards the rear and TIREMAAX™ PRO tyre pressure inflation system.

The major components included in this parts list is as follows:

- EDT300 INTRAAX Axle Assemblies (HALFTRAAX™)
- Air springs, relevant mounting hardware and fasteners
- Shock Absorbers, relevant mounting hardware and fasteners
- Frame Hangers
- QUIK-ALIGN® hardware and fasteners
- Height Control Valve (HCV) system
- Axle lift system

Parts published in this parts bulletin are the latest available parts. Unless otherwise noted, they are functionally equivalent to, or better than, the originally supplied components.

This parts list should be used in conjunction with:

- [97114-100](#) Trailer Wheel End Systems Parts List
- [97114-097](#) Trailer Brake Systems Parts List

NOTE: All quantities listed within this parts list are as applicable for a single axle.

ABBREVIATIONS

Abbreviations used in this document may include the following terms:

- AR – As Required
- ARL – Auxiliary Rebound Limiter
- Assy – Assembly
- HCV – Height Control Valve
- NLA – No Longer Available
- NSS – Not Serviced Separately
- PCD – Pitch Circle Diameter
- Std – Standard
- TFB™ – TRI-FUNCTIONAL™ Bush

AXLE AND SUSPENSION IDENTIFICATION

To assist with the identification of an INTRAAX® axle or suspension system, reference should be made to the axle identification plate, refer [Figure 2](#), and suspension assembly number plate, refer [Figure 2](#).



Figure 1: Axle ID Plate

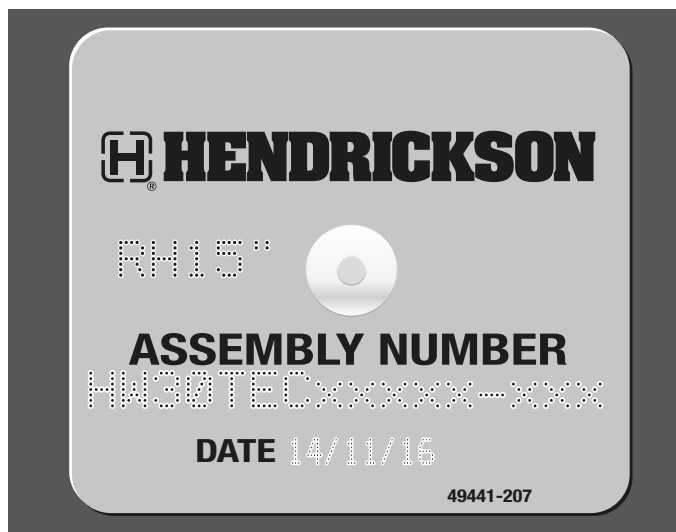


Figure 2: Assembly Plate

AXLE ID PLATE

The axle ID plate is usually located on the inboard side of the left-hand trailing arm and provides the following:

- MODEL
- DESCRIPTION
- CUSTOMER PART NUMBER
- AXLE SERIAL NUMBER
- AXLE CAPACITY

The axle serial number (e.g. SK1601220077) provides the following details:

MANUFACTURING PLANT IDENTIFIER

The first two digits of the axle serial number identify the manufacturing plant that originally manufactured the HALFTRAAX™ Assembly as follows:

- SK – Somerset Kentucky
- LI – Lebanon Indiana
- CO – Canton Ohio

DATE OF MANUFACTURE

The third to eighth digits of the axle serial number identify the date the HALFTRAAX Assembly was manufactured in date format: Year - Month - Date. For example, the code 160122 shows that it was manufactured on 22 January 2016.

MANUFACTURING SEQUENCE NUMBER

The final four digits (e.g. 0077) of the axle serial number provide the manufacturing sequence number.

SUSPENSION ASSEMBLY NUMBER PLATE

The suspension assembly number plate is usually located on the inboard side of the right-hand trailing arm. It indicates that the suspension has been assembled in Australia and provides the following:

- RIDE HEIGHT
- ASSEMBLY PART NUMBER
- DATE OF ASSEMBLY

ASSEMBLY NUMBER

The first six digits of the assembly part number identify the suspension system base model, while the remaining digits identify specific options such as wheel end and brake system configuration.

Base Model Identification

Manufacturer (Digit 1)	TRI-FUNCTIONAL™ Bush Width (Digit 2)	Load Capacity (Digit 3 & 4)	Model (Digit 5)	Specific Option Code (Digit 6)	Tyre Pressure Control (Digit 7)
H= Hendrickson	W = Wide 6 Inch (152.4 mm)	30 = 30,000 lbs (13,608 kg)	T = Top Mount	See below.	C = None P = TIREMAAX™ PRO

Specific Option Code (Digit 6)

SOC	Axle Track	Brake Type	Spindle type	Axle Diameter
E	73 Inch	16.5 Inch Drum	HP – Parallel	5.0 Inch

RIDE HEIGHT LABEL

The ride height label, refer [Figure 3](#), is usually affixed to the trailer frame, and provides an additional means of identification for an INTRAAX® axle or suspension system, as well as confirming system ride height for service purposes.

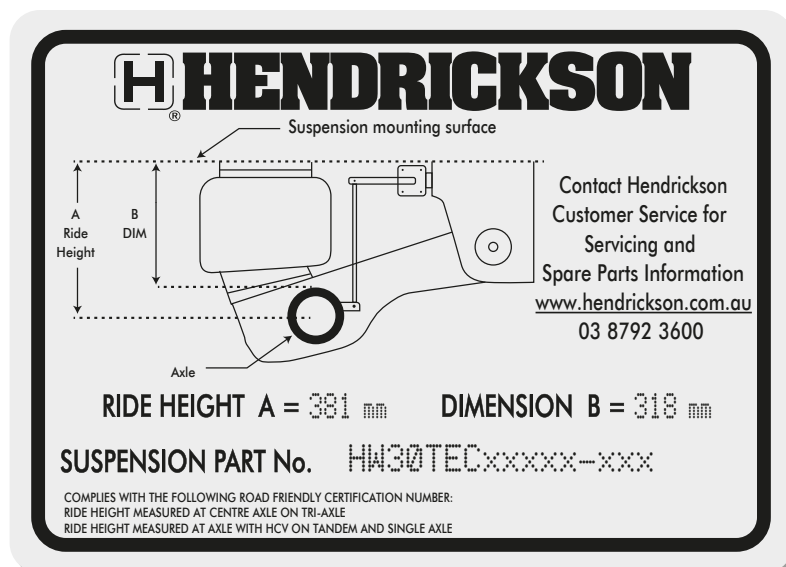


Figure 3: Ride Height Label

AXLE ASSEMBLY

If a replacement HALFTRAAX™ assembly is needed, collect all details from axle identification and assembly plates and then contact Hendrickson customer service who recommend the best and most suitable components to suit your application.

HALFTRAAX™ ASSEMBLY COMPONENTS

All replacement EDT Drum Brake HALFTRAAX™ axle assemblies are supplied complete with the following components:

- TRI-FUNCTIONAL™ Bushes
- S-Cams and tubes
- Air spring pedestals
- Brake anchor pins and bushes

Refer [Figure 4](#) for detailed view of the EDT drum brake HALFTRAAX assembly as supplied.

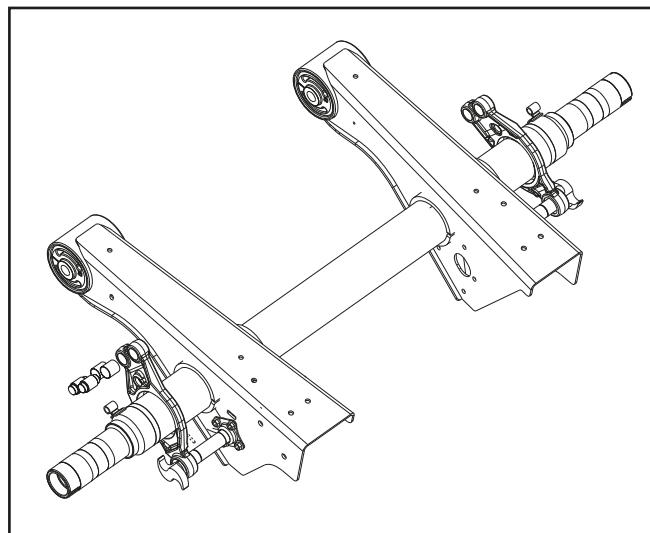
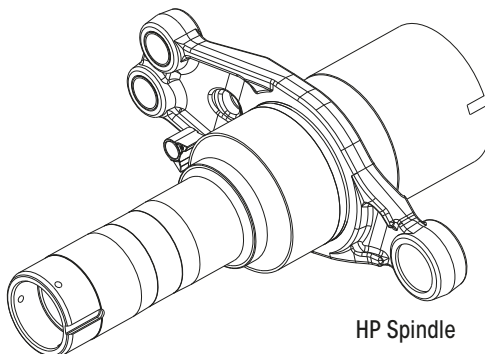


Figure 4: HALFTRAAX Assembly

HALFTRAAX SPINDLE IDENTIFICATION

EDT INTRAAX suspension systems are only available with HP (Parallel) type spindles. Refer [Figure 5](#).



HP Spindle

Figure 5: HP Parallel Spindle

HALFTRAAX Part Number

HALFTRAAX Number	Description	Notes
E1INTSUSP.3432	HALFTRAAX™ EDT300, 73" Track, HP Spindle, 16.5" Drum Brake	5 inch axle.

FRAME HANGER & PIVOT

FRAME HANGER IDENTIFICATION

To determine the applicable frame hanger for a specific suspension, the hanger 'drop' will often need to be determined.

Frame drop is the measurement in millimetres from the underside of the trailer frame to the centre of the pivot bolt hole. Refer to dimension **A** in [Figure 6](#).

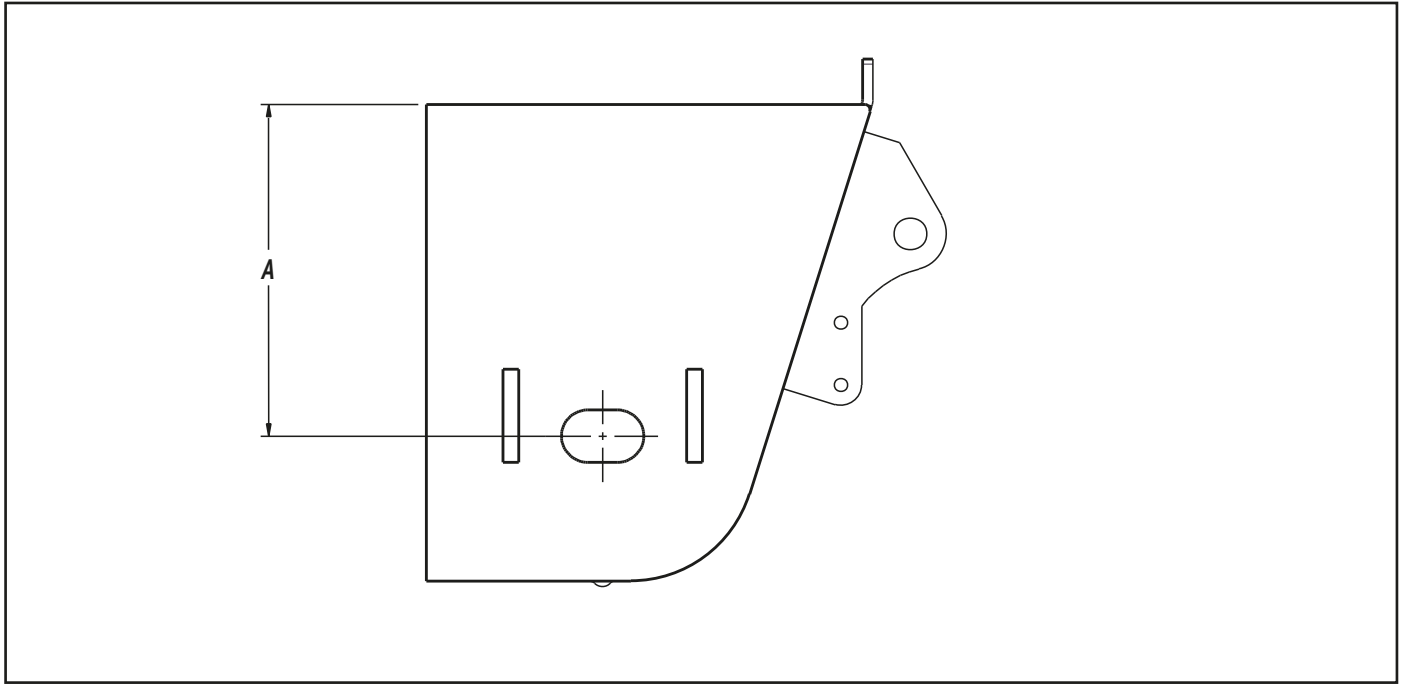
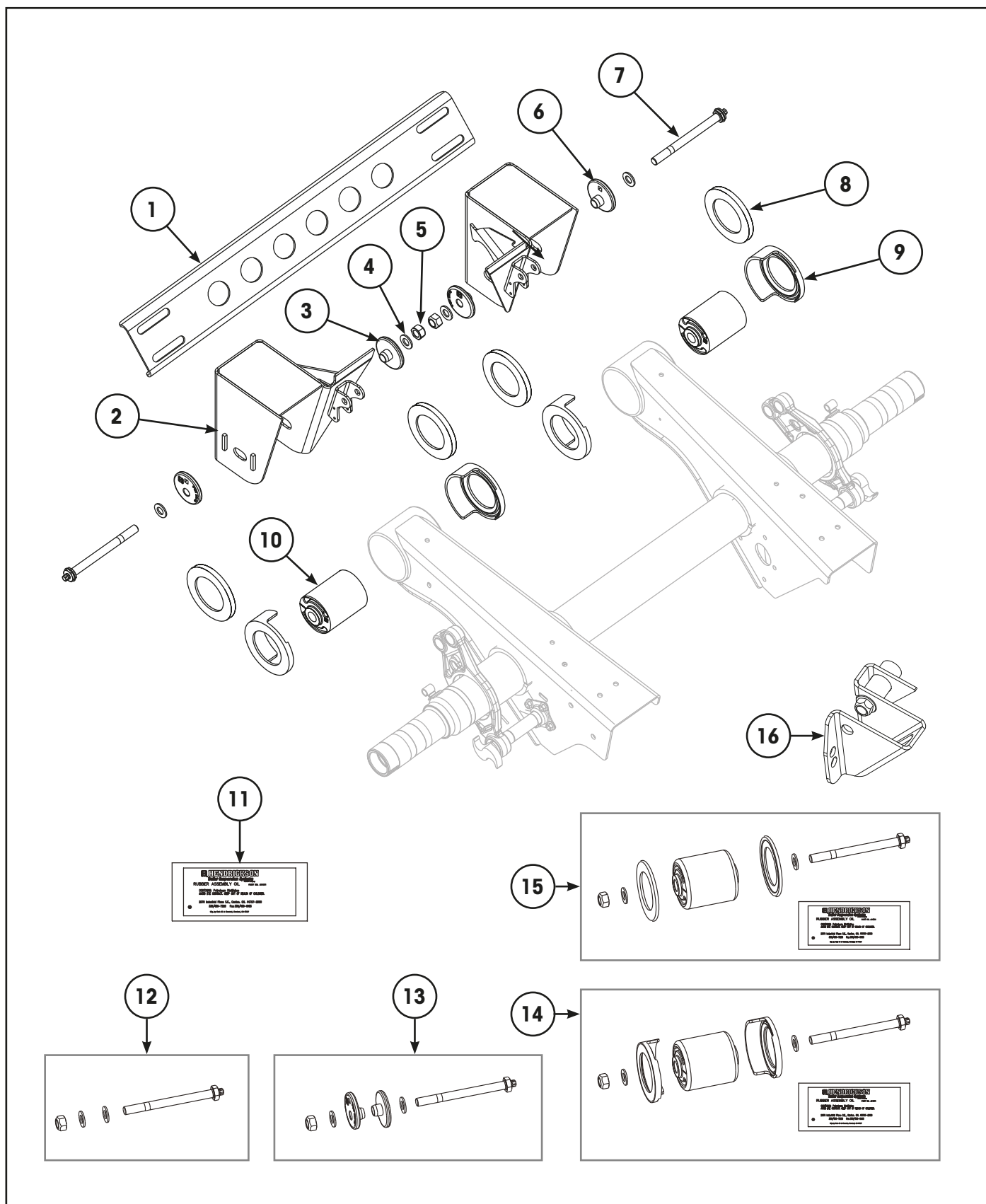


Figure 6: Hanger Drop

FRAME HANGER & PIVOT





FRAME HANGER & PIVOT

Item	Part Number	Description	Qty	Notes
1	98870-016	Brace Channel, Hanger Support	1	Suits 254 & 305 mm drop. 40 x 202 x 1040 mm.
2	S-24766-3R	Frame Hanger, RH – Standard [1]	1	254 mm Drop, 14" Ride Height. Refer "Frame Hanger Identification" on page 7.
	S-24766-3L	Frame Hanger, LH – Standard [1]	1	
	S-24766-4R	Frame Hanger, RH – Standard [1]	1	305 mm Drop, 15" Ride Height. Refer "Frame Hanger Identification" on page 7.
	S-24766-4L	Frame Hanger, LH – Standard [1]	1	
	S-24766-5R	Frame Hanger, RH – Standard [1]	1	356 mm Drop, 16" & 17" Ride Height. Refer "Frame Hanger Identification" on page 7.
	S-24766-5L	Frame Hanger, LH – Standard [1]	1	
3	C-20924	Flanged Washer, Inner – QUIK-ALIGN®	2	Concentric. Use Item 13. Also included in item 13.
4	NSS	Hardened Washer – 7/8"	4	Use Item 12, 13, 14 or 15.
5	NSS	Nut, Prevailing Torque – 7/8" UNC	2	Use Item 12, 13, 14 or 15.
6	C-20925	Flanged Washer, Outer – QUIK-ALIGN	2	Eccentric. Use Item 13. Also included in item 13.
7	NSS	Shear Bolt – QUIK-ALIGN	2	Use Item 12, 13, 14 or 15.
8	S-21099-4P	Kit – Wear Bushing, Flat Style	1	Included in item 14.
	S-40230-1	Wear Bush, Heavy Duty Flat	4	For severe off-highway applications.
9	S-26824-4P	Kit - Wear Bushing, Glove Style	1	Included in item 15.
10	NSS	Bush, TRI-FUNCTIONAL	2	Use Item 14 or 15.
11	A-14011	Lube Pack, TRI-FUNCTIONAL™ Bush	2	Included in items 14 & 15.
12	S-31623	Kit, Pivot Bolt	2	Includes Items 4, 5 & 7.
13	S-31625	Kit, Pivot Bolt & QUIK-ALIGN Flanged Washer	2	Includes Item 3, 4, 5, 6 & 7.
14	98591-010	Kit, Pivot Bush – Glove Washer	2	[2] Includes Items 4, 5, 7, 9, 10 & 11.
15	A-31624	Kit, Pivot Bush – Flat Washer	2	[2] Includes Items 4, 5, 7, 8, 10 & 11.
16	98870-017	Brake Chamber Mount – Left Hand	1	Suits 5" axles. Includes lower front shock mount.
	98870-018	Brake Chamber Mount – Right Hand	1	Suits 5" axles. Includes lower front shock mount.

[1] Hanger Repair Kits: Two hanger repair kits are available to assist with repair of cracked, worn or gouged hangers. Depending on the damage involved it may be possible to use one of these kits instead of replacing the entire hanger. A hanger that has been repaired with kit 98690-001 will require a unique pivot bolt and collars. These are available as pivot bolt 98591-013 (item 12), bolt & collar kit 98591-012 (item 13) and bolt, flat wear washer & bush kit 98591-011 (item 15). For more details refer to Hendrickson [Technical Bulletin 97117-101](#).

- 98690-001 is for worn or gouged hangers
- 98544-024 is for hangers with minor cracking

[2] NOTE: The TRI-FUNCTIONAL™ bush (TFB™) is larger than the inner diameter of axle beam tube. To avoid damaging the TFB, the correct installation tool MUST be used along with the appropriate lubricants. Refer to the "Special Tools" on page 21 section for tool details. For bush replacement procedures, refer to Hendrickson [Technical Bulletin L427](#).

AIR SPRINGS

AIR SPRING IDENTIFICATION

To assist with the correct air spring identification a visual inspection of the air spring is recommended. There are two air spring identification markings:

- The air spring part number is provided on a decal on the upper bead-plate (refer to **Item 1** in [Figure 7](#))
- Moulded into the air spring rubber bellows (refer to **Item 2** in [Figure 7](#)).

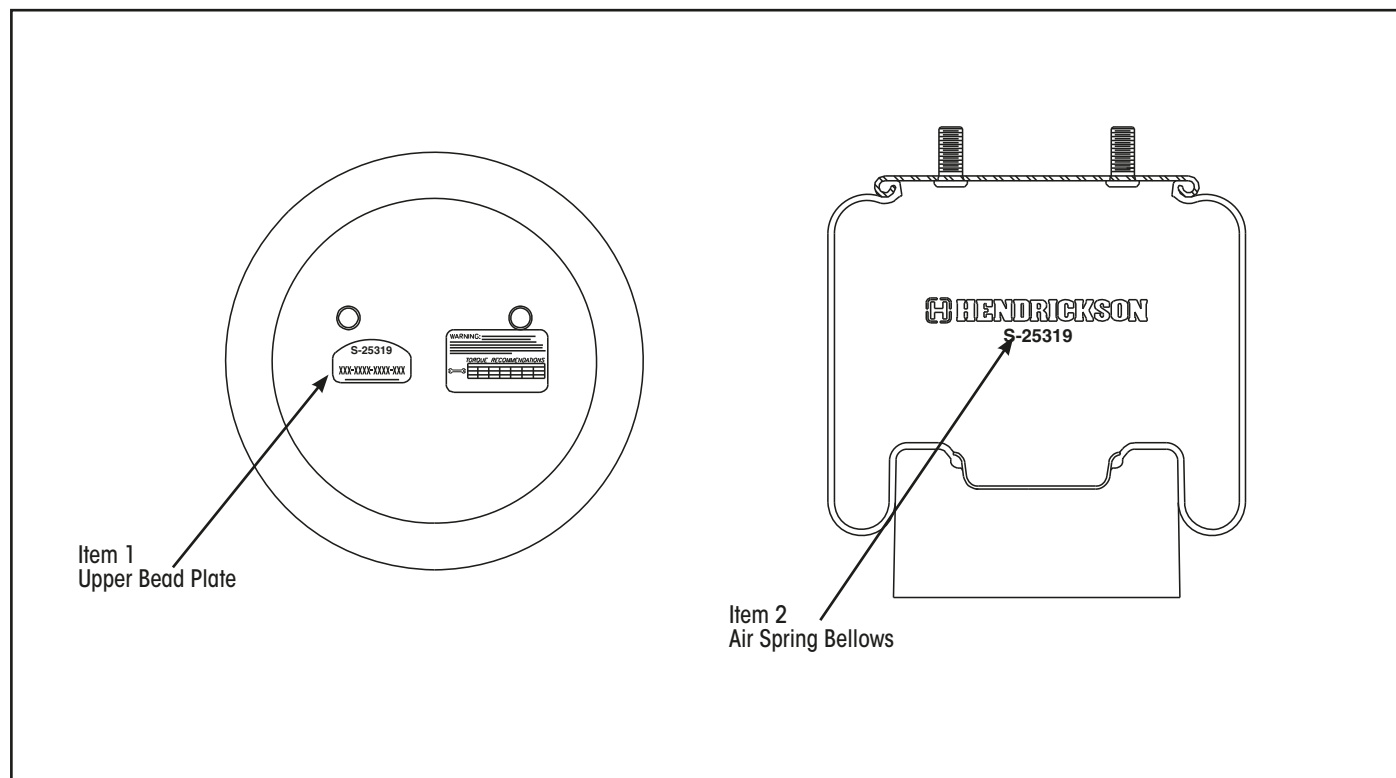
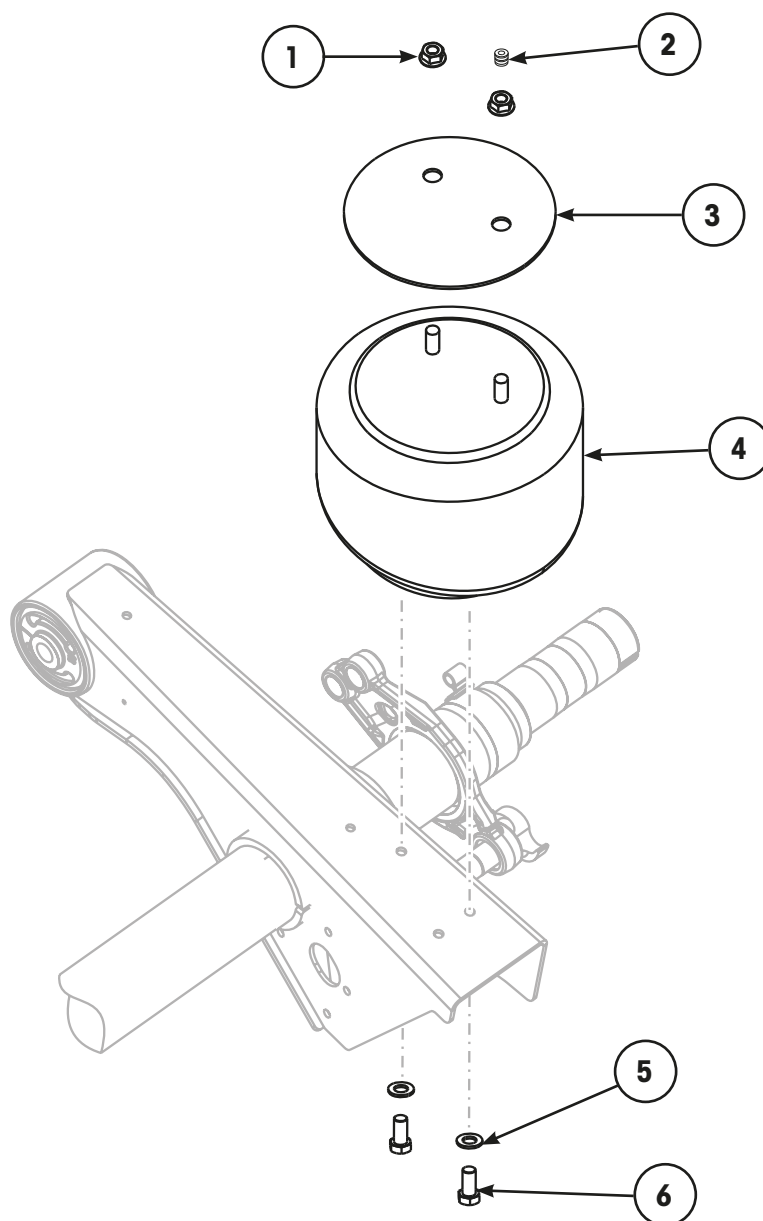


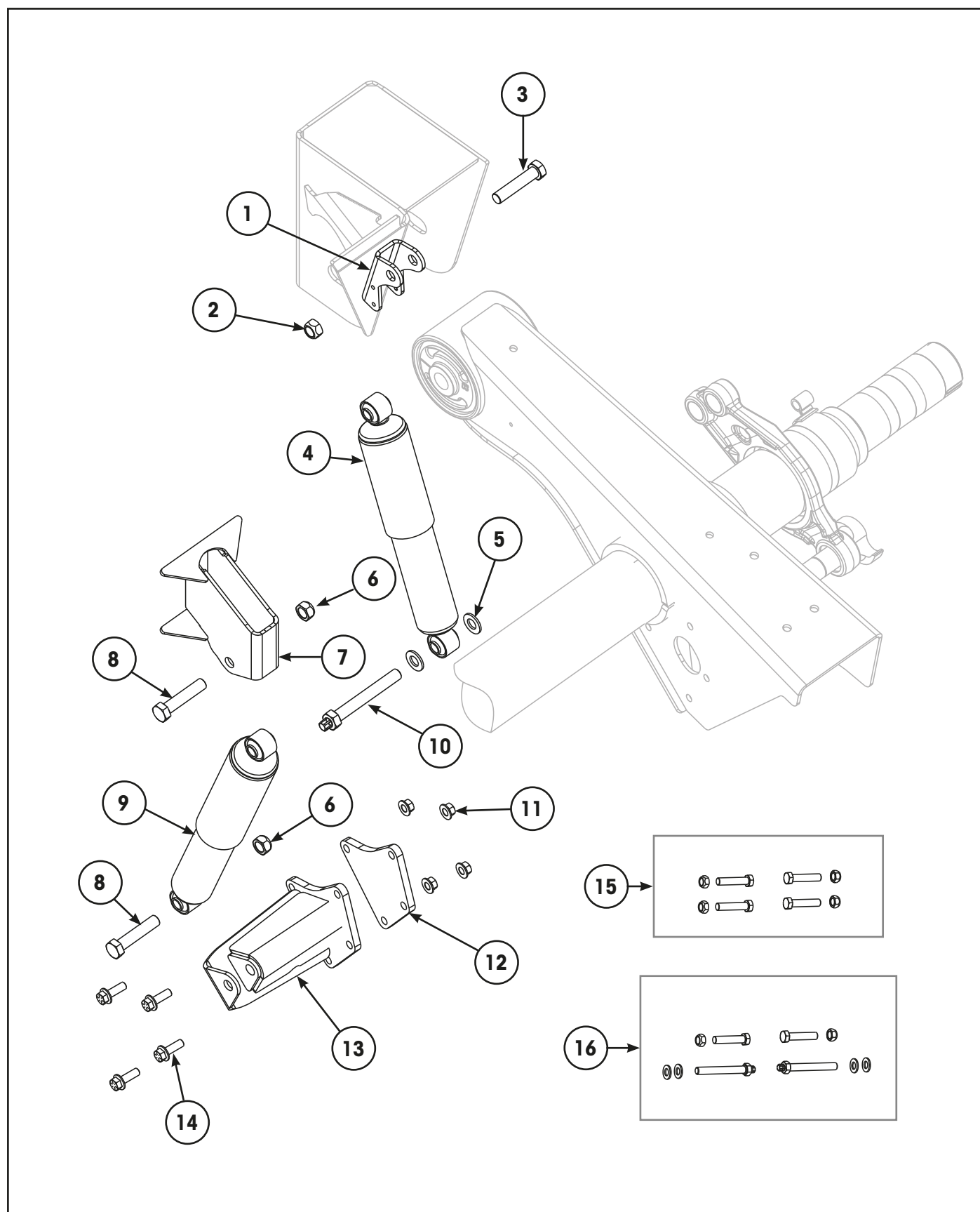
Figure 7: Air Spring Identification

AIR SPRINGS & HARDWARE



Item	Part Number	Description	Qty	Notes
1	NSS	Nut, Flanged – Air Spring, Upper	4	3/4 – 16 Inch. Use Item 7.
2	SA-2300-3	Plug, Air Fitting – 1/4"–18 NPTF	2	Use Item 7.
3	S-23294	Flex Plate – Air Spring, Upper	2	
4	S-25319	Air Spring Assembly	2	
5	NSS	Washer, Lock – Air Spring, Lower	4	1/2 Inch. Use Item 7.
6	NSS	Bolt – Air Spring, Lower	4	1/2 -13 x 1.00 Inch. Use Item 7.
7	S-25339	Hardware Kit, Air Spring	1	Includes Items 1, 2, 5 & 6. Not illustrated.

SHOCK ABSORBERS & HARDWARE





SHOCK ABSORBERS & HARDWARE

Item	Part Number	Description	Qty	Notes
1	S-20918	Clevis, Shock Mount – Upper, Front	2	
2	NSS	Nut, Shock Absorber – Upper Front	2	Use item 16.
3	NSS	Bolt, Shock Absorber – Upper, Front	2	Use item 16.
4	S-23316	Shock Absorber, Front	2	[1] 14 inch ride height.
	S-25515	Shock Absorber, Front	2	[1] 15, 16 & 17 inch ride height.
5	NSS	Washer, Hardened - Front Shock Absorber	4	Use item 16.
6	NSS	Nut, Shock Absorber, Rear	4	Use item 15.
7	S-29967	Clevis, Shock Mount – Upper, Rear	2	
8	NSS	Bolt, Shock Absorber – Rear	4	Use item 15.
9	S-25436	Shock Absorber, Rear	2	14 & 15 inch ride height.
	S-25512	Shock Absorber, Rear	2	16 & 17 inch ride height.
10	NSS	Bolt, Shock Absorber, Lower Front	2	[1] Use item 16.
11	NSS	Nut, Shock Tower to Axle	8	Use item 17.
12	S-28347	Plate, Backing – Lower Shock Tower	2	
13	S-24807-1	Shock Tower, Lower Rear – LH	1	
	S-24807-2	Shock Tower, Lower Rear – RH	1	
14	NSS	Bolt, Shock Tower To Axle	8	Use item 17.
15	A-2157	Kit, Bolt – Rear Shock Absorber	1	Includes item 6 & 8.
16	S-24757	Kit, Bolt – Front Shock Absorber	1	Includes items 2, 3, 5 & 10.
17	S-25449	Kit, Bolt – Lower Shock Tower	1	Includes items 11 & 14. Not illustrated.

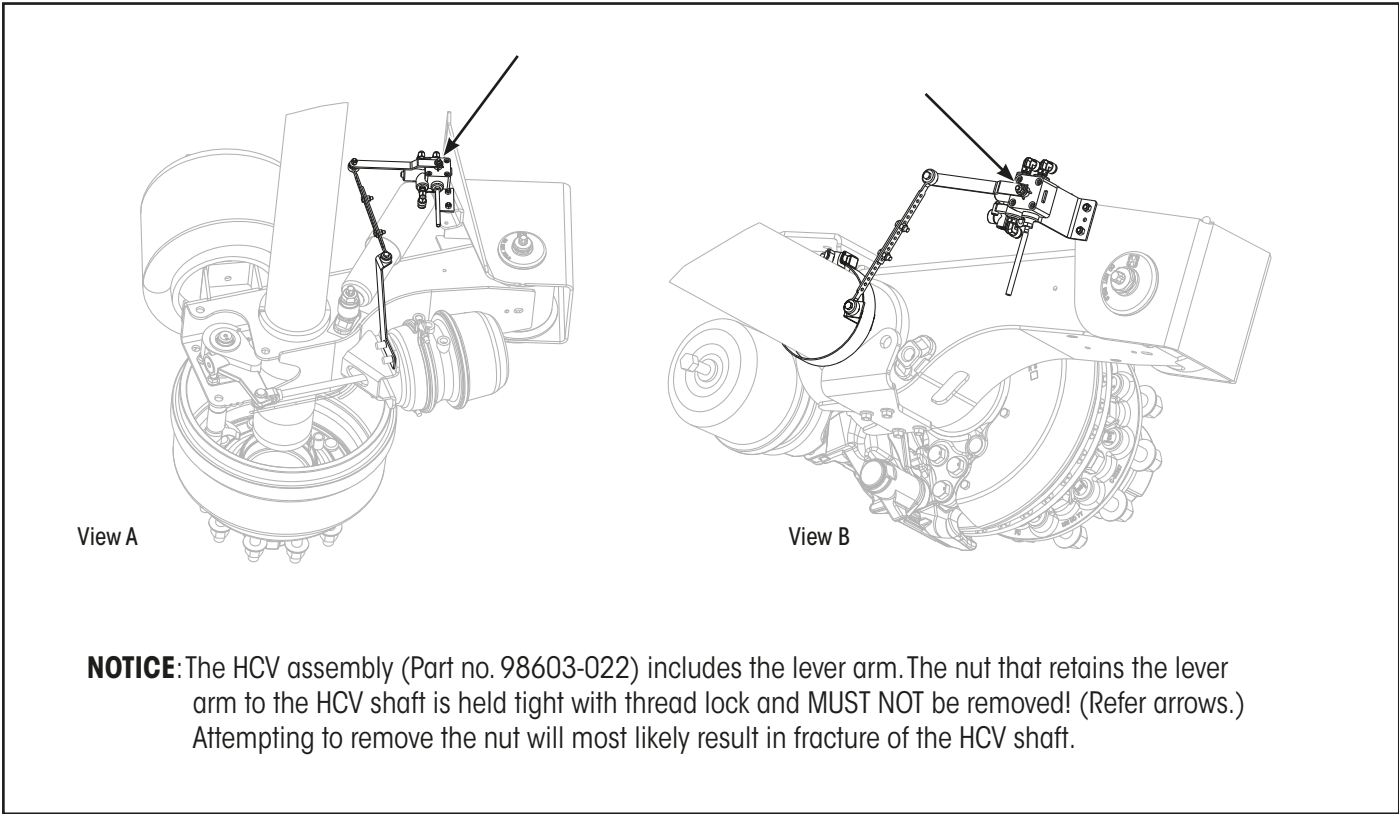
[1] Lower Front Shock Mount: For replacement front lower shock absorber and brake chamber mount refer to “Frame Hanger & Pivot” on page 8.

HEIGHT CONTROL VALVE

HCV LINKAGE IDENTIFICATION

The EDL HCV linkage mounting bracket is available in the following variations:

- Fixed to the brake chamber bracket (Refer to View A)
- Fixed to the axle tube (Refer to View B)



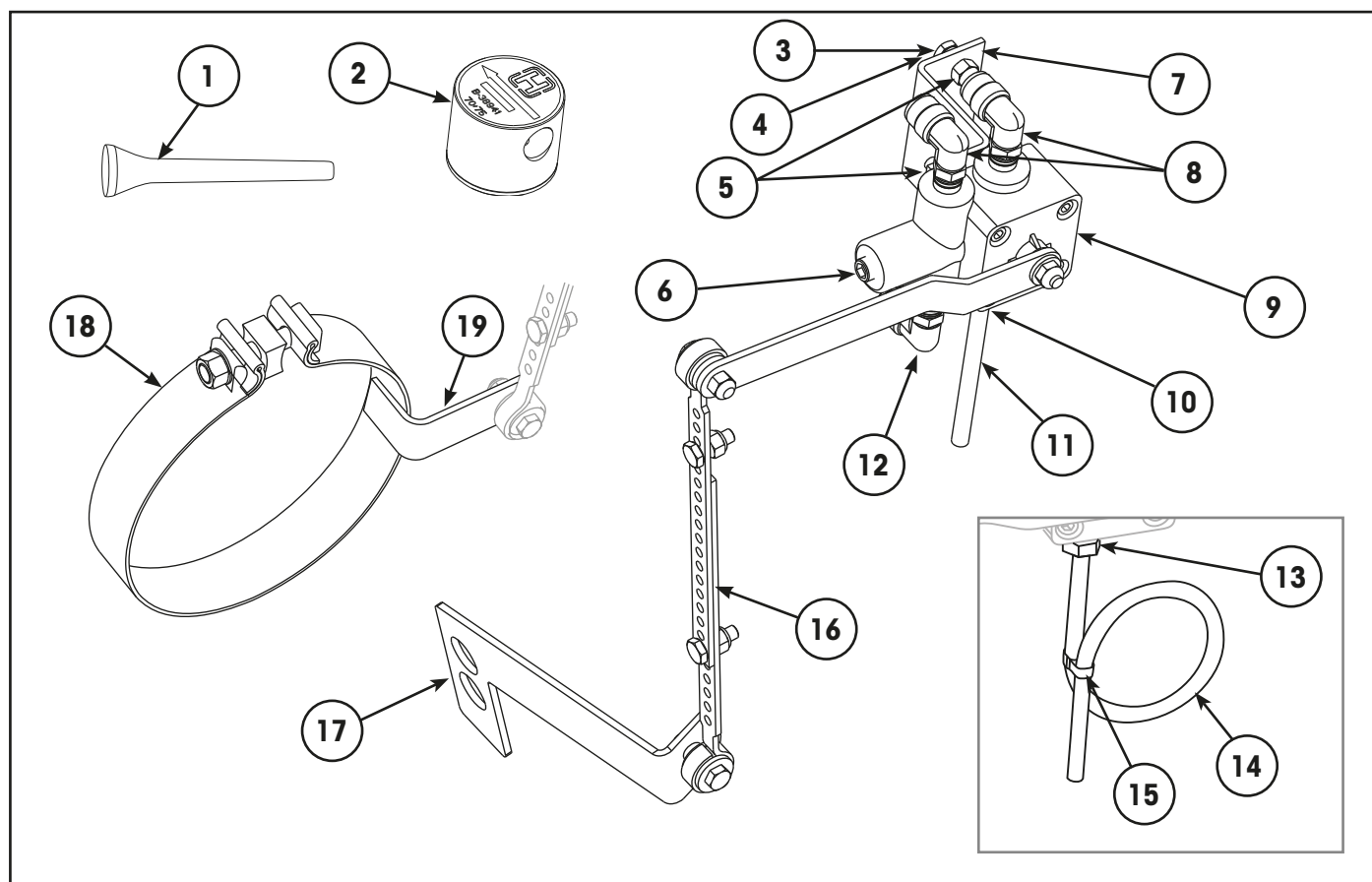
Complete HCV Kits

Complete Height Control Valve kits include HCV, protection valve, linkages, brackets, clamps and necessary hardware.

Number	Suitable For	Components
98606-090	Brake Chamber Mount - Standard Hanger	Includes items 1, 2, 3, 4, 5, 6, 7, 8, 9, 10, 11, 16 & 17.
98606-092	5" Axle Tube Mounted Linkage - Std Hanger	Includes items 1, 2, 3, 4, 5, 6, 7, 8, 9, 10, 11, 16, 18 & 19.

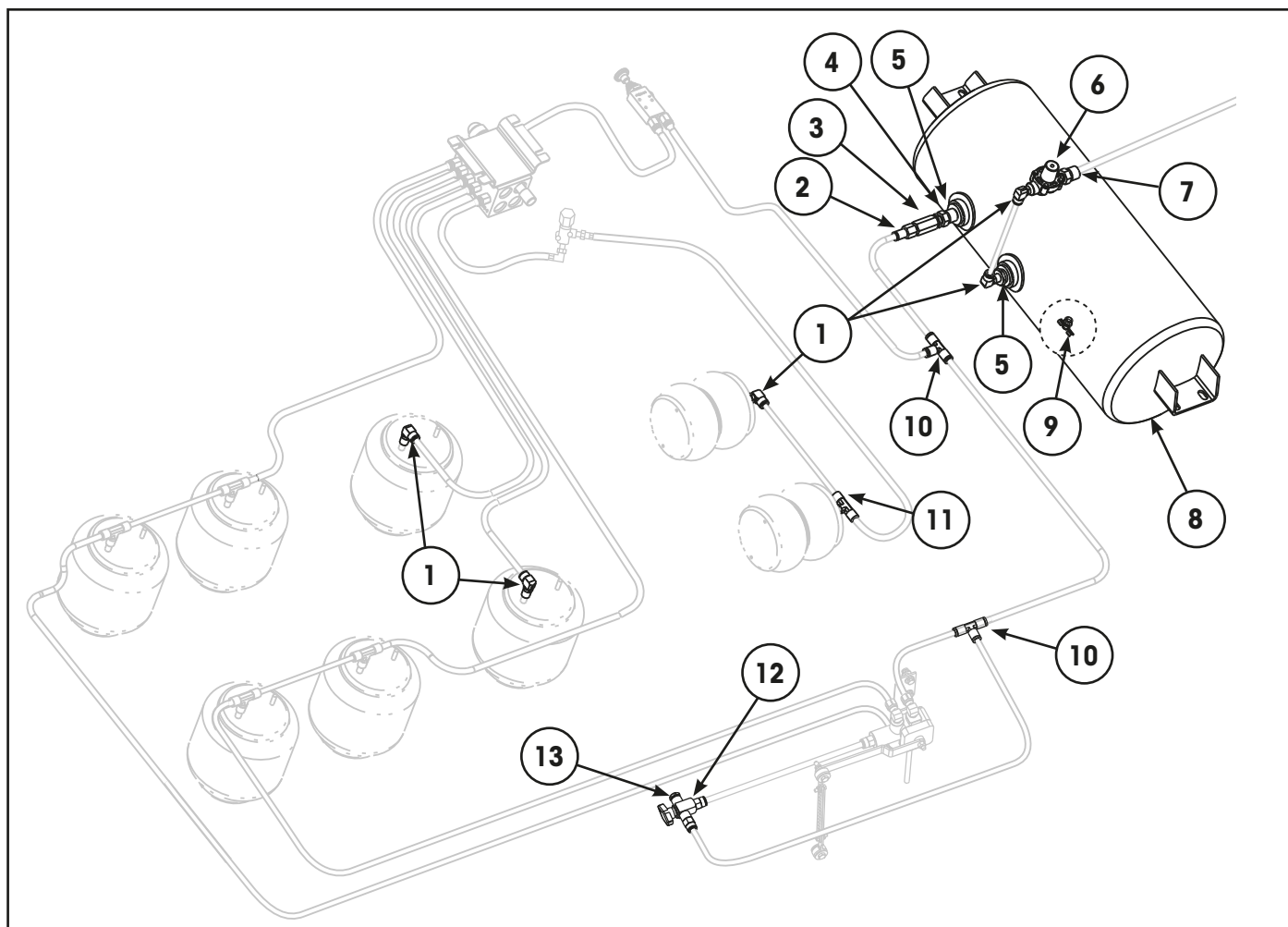


HEIGHT CONTROL VALVE



Item	Part Number	Description	Qty	Notes
1	NSS	HCV Centring Dowel	1	Use item 20.
2	S-38941	Pressure Protection Valve	1	
3	NSS	Bolt, 1/4"-20 UNC x 3/4"	2	Use item 20.
4	22962-028	Washer, Hardened – 1/4"	6	
5	NSS	Nut Lock Hex 1/4"-20 UNC	4	Use item 20.
6	NSS	Pipe Plug 1/4" NPTF	1	Use item 20.
7	57975-000	Bracket, HCV Mounting	1	Standard hanger
8	98732-003	Elbow 90° x 1/4" NPTF Compression	2	Compression. Two are included in item 20.
9	98603-022	Height Control Valve 1/4" NPT	1	
10	NSS	Barbed Tube Fitting, 1/4" NPT, Plastic	1	Use item 20. For heavy duty applications use items 13, 14 & 15.
11	NSS	Tube 1/4" ID x 4" Long	1	
12	98934-031	Elbow 90° Swivel x 1/4" NPT	1	Push to connect, swivel.
13	98934-035	Fitting 1/4 NPT, Metal	1	Optional vent tube & fitting suitable for heavy duty axle use.
14	SA-6400-2	Tube, Black Nylon – 1/4" x 12" Long	1	
15	S-11430-1	Tie, Nylon	1	
16	S-14187	Link Assembly – Bolted	1	
17	S-22477	HCV Bracket	1	Brake chamber bracket mounted
18	S-26593-1	Clamp, Bracket - HCV Link	1	5.00" axle tube mounted.
19	S-23293	Bracket, Lower – HCV Link	1	Axle tube mounted. Use with clamp, item 18.
20	S-29870	HCV Sub Kit (See also "Complete HCV Kits")	1	Includes items 1, 3, 5, 6, 8, 10 & 11. (Not illustrated)

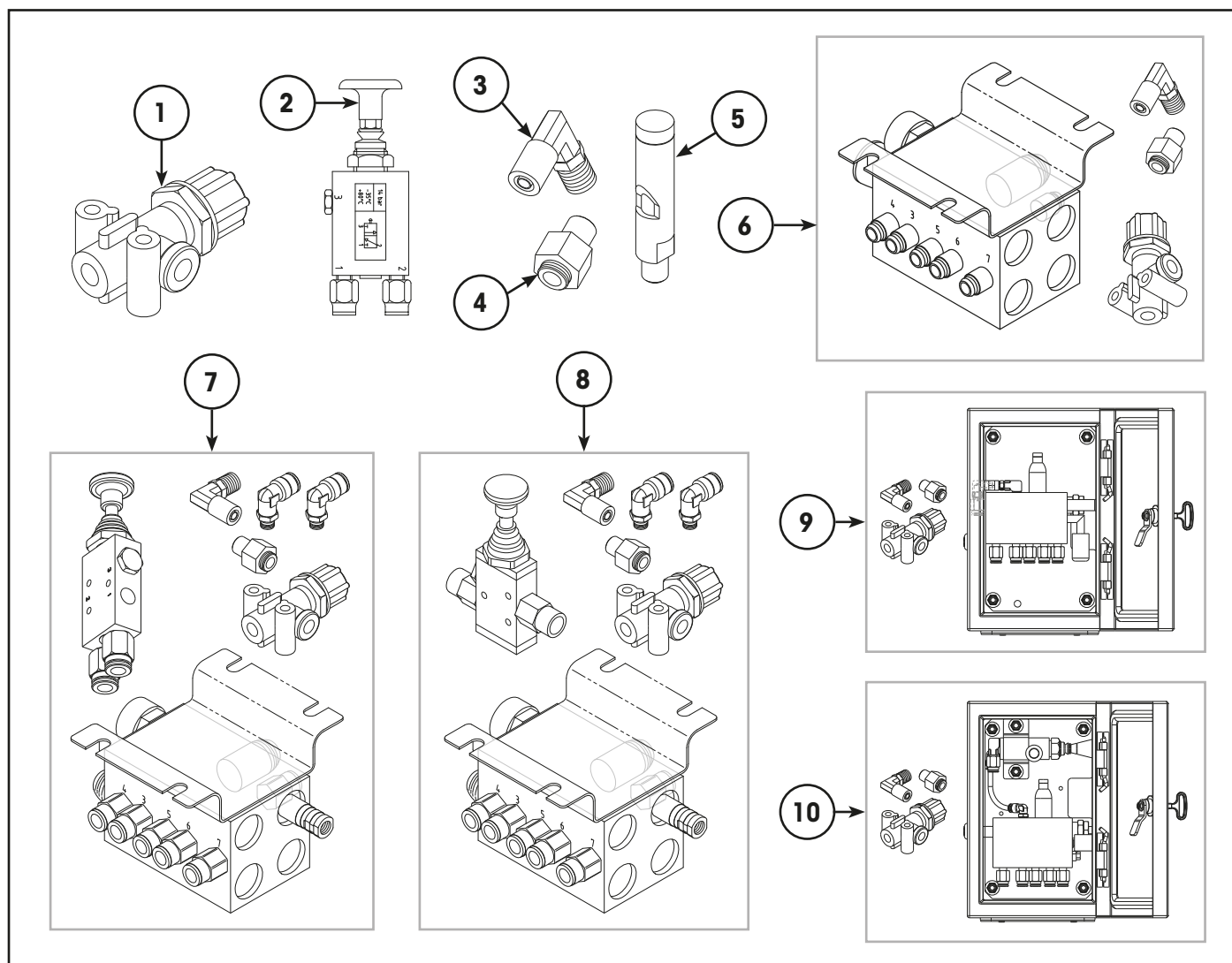
AXLE LIFT SYSTEM CONTROL



Item	Part Number	Description	Qty	Notes
1	98934-031	Male 90° Elbow – 3/8" x 1/4" NPT	AR	
2	98934-005	Connector – Female 3/8" x 1/4" NPT	1	For in-line filter, item 3.
3	98499-006	Air In-Line Filter – 1/4" NPT	1	Use with fitting, item 2.
4	98934-025	Fitting, 1/4" Male x 1/4" Male	1	For in-line filter, item 3.
5	98934-028	Reducing Bush – 3/4" NPT x 1/4" NPT	1	
6	S-38941	Pressure Protection Valve	1	
7	98934-026	Fitting – 1/2" x 1/4" NPT	2	
8	97065-004	Air Tank – 24 Litre, 240 x 630 mm	1	
9	98934-027	Drain Valve	1	
10	98934-015	Tee – 3/8"	1	
11	98934-032	Tee Male Swivel – 3/8"	AR	
12	A-22535	Dump Valve, 3-Way Ball	1	For suspension dump option.
13	98732-015	Silencer Fitting	1	To suit dump valve, item 12.

IMPORTANT: These axle lift system control parts are only applicable to LACV systems supplied by Hendrickson Australia.

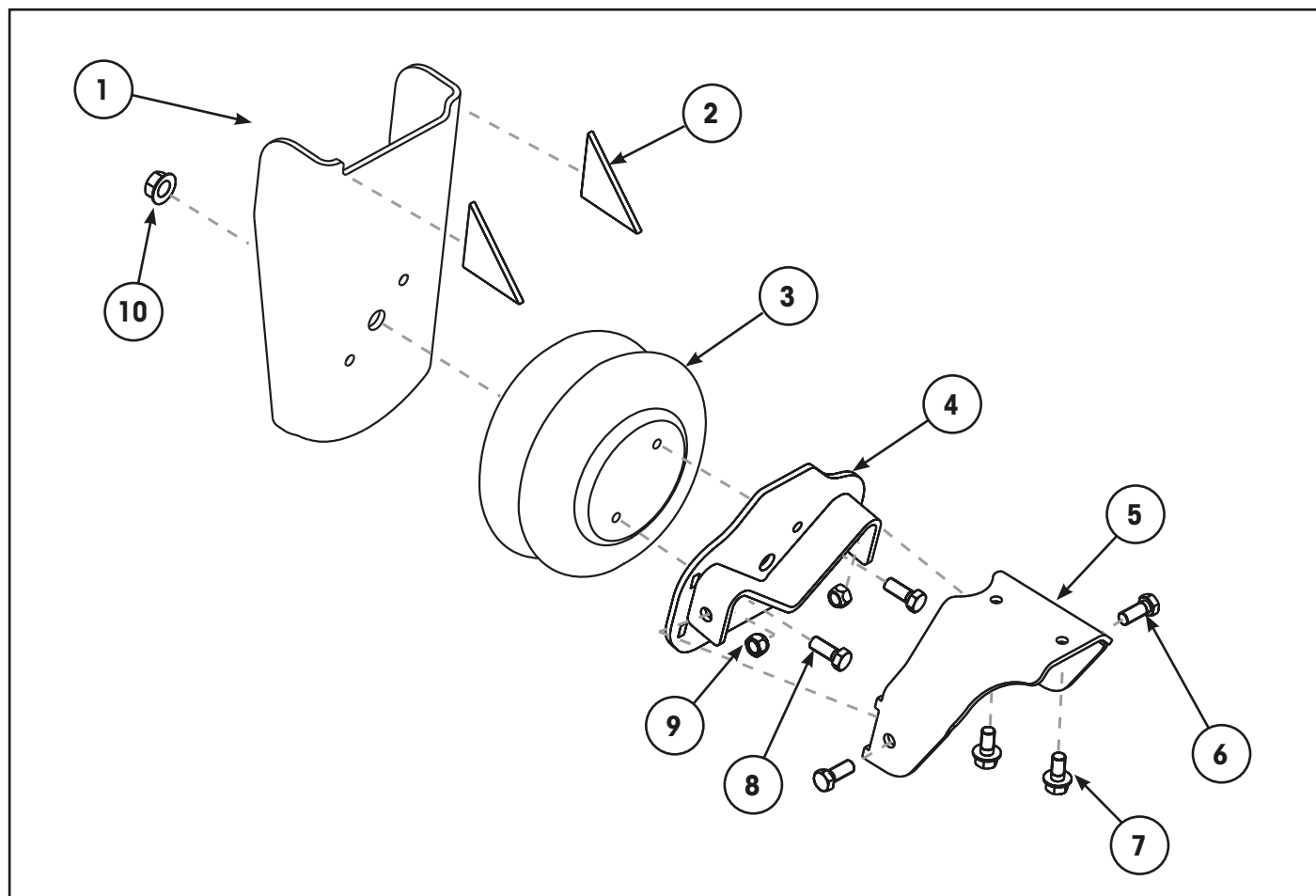
LIFT AXLE CONTROL VALVE



Item	Part Number	Description	Qty	Notes
1	98732-006	Pressure Regulator – 80 psi	1	Included in items 6, 7, 8, 9 & 10.
2	98402-003	Valve – Manual Override	1	Standard override valve for Auto/Auto LACV. Includes fittings. Included in items 7 & 10.
3	98732-003	Air Fitting – 90° Elbow	1	Use with pressure regulator, item 1.
4	98732-002	Air Fitting – Straight	1	
5	98732-059	Whistle	2	Included in complete LACV, items 9 & 10.
6	98975-004	Manual/Auto – With 80 psi Regulator	1	LACV with fittings & decal. Includes item 1, 3 & 4.
7	98975-005	Auto/Auto – With 80 psi Regulator	1	LACV with standard override valve, fittings & decal. Includes items 1, 2, 3 & 4. Refer illustration.
8	98975-008	Auto/Auto – With 80 psi Regulator	1	LACV with alternate override valve, fittings & decal. Includes items 1, 3, 4 & alternate (straight) version of item 2. Refer illustration.
9	98975-013	Manual/Auto – With 80 psi Regulator	1	Enclosure with LACV, regulator & fittings, item 6.
10	98975-014	Auto/Auto – With 80 psi Regulator	1	Enclosure with LACV, valve, regulator & fittings, item 7.

IMPORTANT: These axle lift control system components are only applicable to systems supplied by Hendrickson Australia.

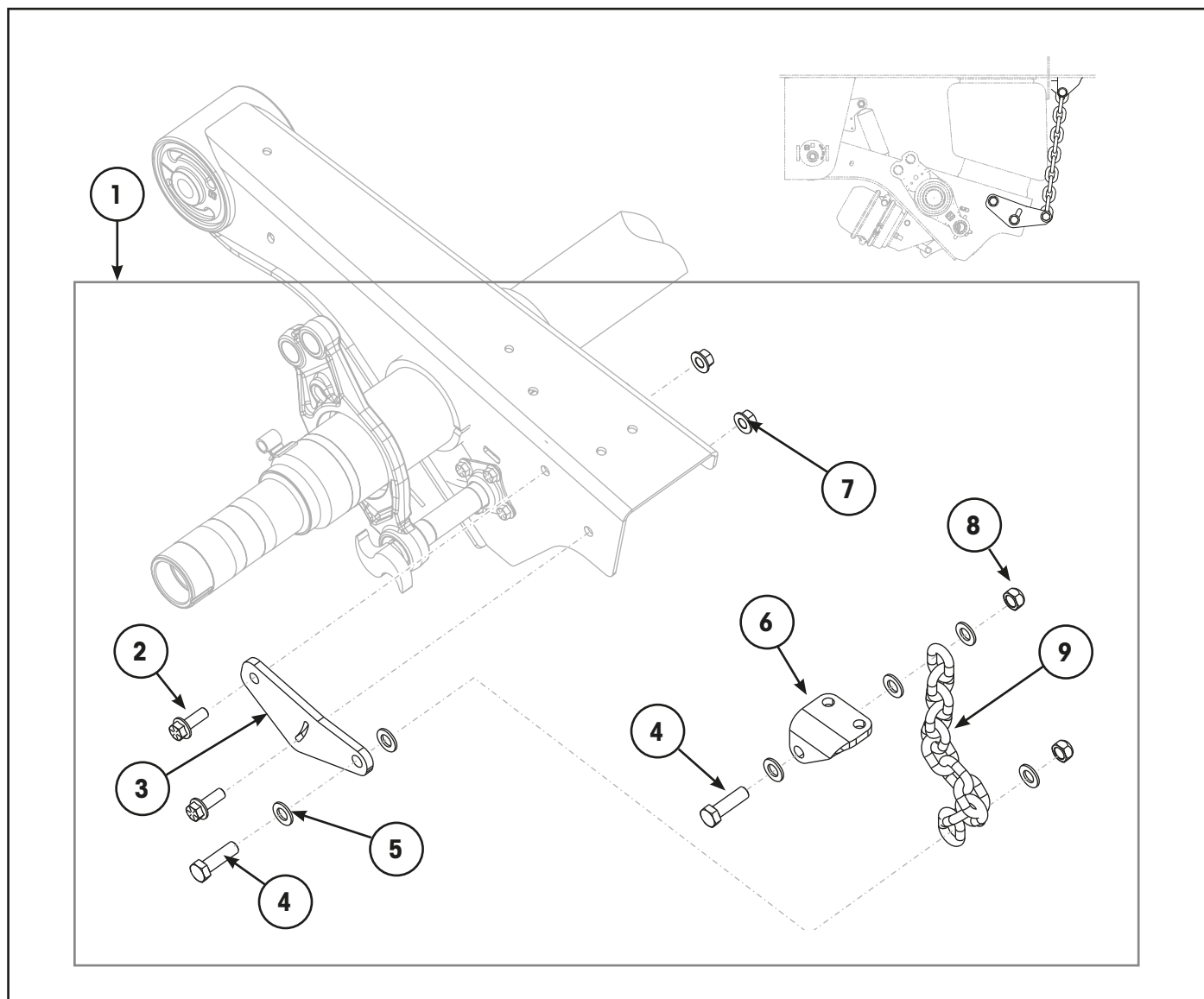
UBL™ AXLE LIFT SYSTEM HARDWARE



Item	Part Number	Description	Qty	Notes
1	S-24658	Bracket Assembly – Hanger Support	2	
2	S-2901-37	Gusset, Hanger Support Bracket	4	
3	S-23114	Air Spring – Axle Lift	2	
4	B-27945	Plate Assembly – Beam, Air Spring	2	
5	C-28537	Bracket Assembly – Beam, Air Spring	2	
6	NSS	Bolt, Plate to Bracket – 1/2\"-13 x 1.25\"	4	Use item 11.
7	NSS	Self-Tapping Bolt – 3/8\"-16	4	[1] For installation only.
8	NSS	Bolt, Air Spring to Plate – 3/8\"-16 x 0.75\"	4	Use item 11.
9	NSS	Nut, Plate to Bracket – 1/2\"-13	4	Use item 11.
10	S-22490-5	Nut, Air Spring – 3/4\"-16 Spiralock	2	Included in item 11.
11	S-24614	Fastener Kit – Axle Lift (Not Illustrated)	1	[1] Includes items 6, 7, 8, 9 & 10.
12	S-24657	Complete Kit – Axle Lift (Not Illustrated)	1	Complete kit, includes all listed items.

[1] NOTE: The S-24614 fastener kit includes four 3/8\"-16 self-tapping bolts (item 7). These are only required during initial system installation and must be removed and discarded once system installation is complete.

AXLE REBOUND LIMITER

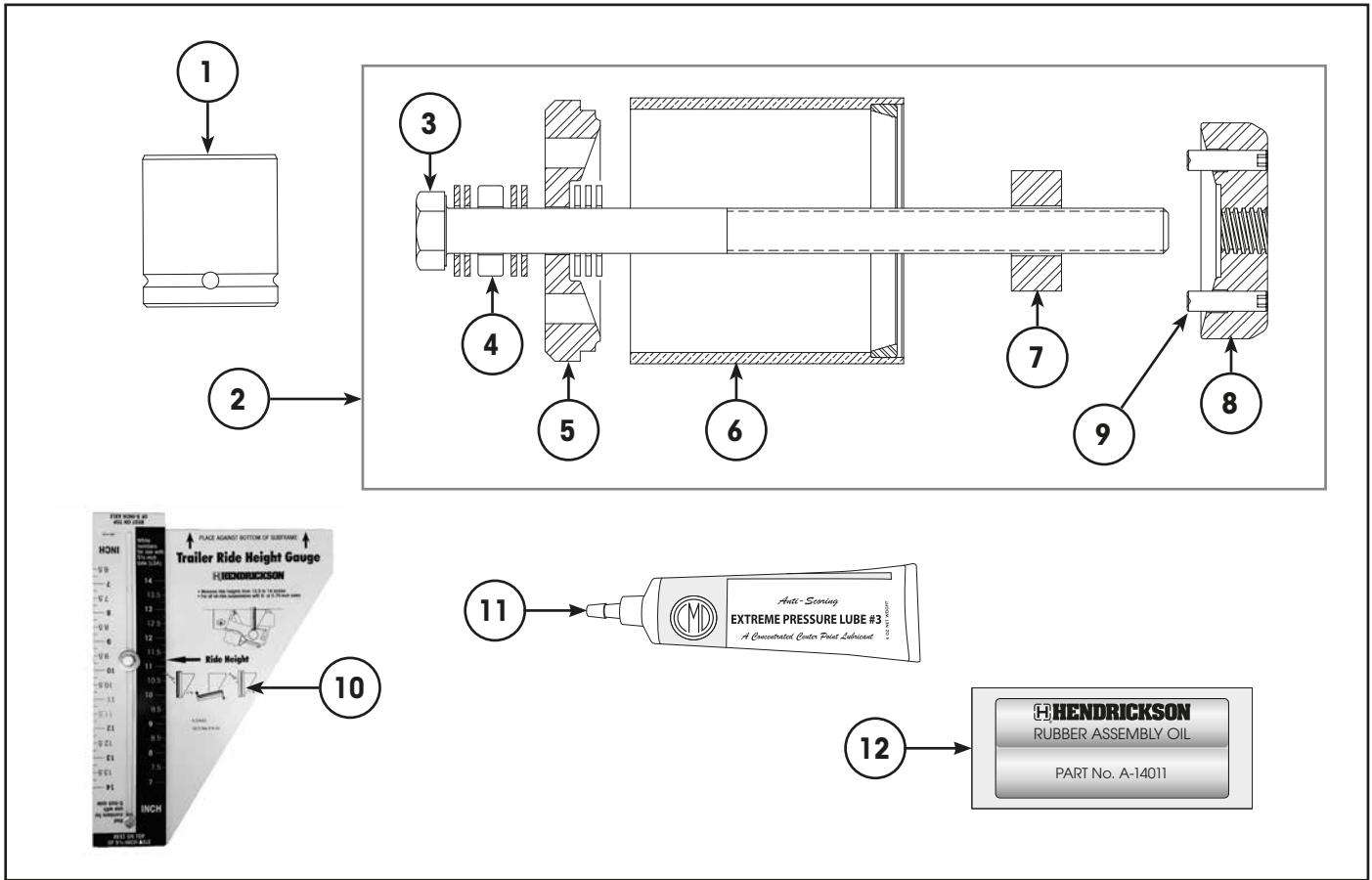


Item	Part Number	Description	Qty	Notes
1	ARL.43	Kit, Axle Rebound Limiter	1	15 inch ride height.
	ARL.46	Kit, Axle Rebound Limiter	1	14, 16 & 17 inch ride height.
2	SA-6900-20	Bolt, Flanged - Lower Chain Bracket	4	5/8"-11 x 1.75 inch.
3	S-25333	Bracket, Chain - Lower	2	
4	SA-1000-31	Bolt, Hex – ARL Chain	4	3/4"-10 UNC x 2.5 inch, grade 8.
5	SA-1500-6	Washer, Flat – ARL Chain	12	3/4 inch.
6	S-25271-1	Bracket, Chain – Upper, LH	1	
	S-25271-2	Bracket, Chain – Upper, RH	1	
7	SA-7000-6	Nut, Flanged – Lower Chain Bracket	4	5/8"-11.
8	49842-000	Nut, Lock – ARL Chain	4	3/4"-10 UNC.
9	SA-15100-13	Chain, High Tensile – ARL, 13 Link	2	15 inch ride height.
	SA-15100-15	Chain, High Tensile – ARL, 15 Link	2	14, 16 & 17 inch ride height.



This Page is Intentionally Left Blank

SPECIAL TOOLS



Item	Part Number	Description	Qty	Notes
1	S-24303	Socket, Pivot Bolt – E20	1	3/4 inch drive
	S-24536	Socket, Pivot Bolt – E20	1	1 inch drive standard duty
	S-25119	Socket, Pivot Bolt – E20	1	1 inch drive heavy duty
2	S-21307A	Tool Kit - Wide TRI-FUNCTIONAL™ Bush	1	Refer Note.
3	S-21308	Bolt, Acme Thread – 18 Inch	1	Included in item 2.
4	98762-001	Bearing, Thrust – TFB™ Tool	1	Included in item 2.
5	S-21312	Plate, Front – TFB Tool	1	Included in item 2.
6	S-21313	Tube, Transition – TFB Tool	1	Included in item 2.
7	S-21314	Spacer, Removal – TFB Tool	1	Included in item 2.
8	S-21309	Plate, Rear Drive – TFB Tool	1	Included in item 2.
9	SA-2800-4	Set Screw – 1/2"-13 x 4 inch	2	Removal only. Included in item 2.
	SA-2800-7	Set Screw – 1/2"-13 x 2 inch	2	Installation only. Included in item 2.
10	S-23442	Gauge, Ride Height – 13.5 to 19 Inch	1	
11	S-21337	Grease, Extreme Pressure	1	Refer Note. Essential for use with tool on installation. Included in item 2.
12	A-14011	Lube Pack - TRI-FUNCTIONAL Bush	1	To lubricate bushes on installation.

NOTE: The TRI-FUNCTIONAL™ tool kits are supplied with one tube of extreme pressure grease. It is essential to use this grease on the tool's Acme thread to avoid thread form damage.



REVISIONS TABLE

DATE	REV	PAGE	DESCRIPTION
Feb-2020	B	All	New format. Update HCV, ECN 11464. ARL chain part numbers ECN 11393. Add hanger repair kits ECN 11274, 11419. Expand axle lift details, ECN 11515.
Nov-2020	C	15, 16, 17	Update PP valve and add whistle, ECN 11559 & 11716.
Nov-2020	C	9	Correct TFB kit inclusions.
Oct-2024	D	9	Add HD wear bush, ECN 11839.

Actual product performance may vary depending upon vehicle configuration, operation, service and other factors.
All applications must comply with applicable Hendrickson specifications and must be approved by the respective vehicle manufacturer with the vehicle in its original, as-built configuration.
Contact Hendrickson for additional details regarding specifications, applications, capacities, and operation, service and maintenance instructions.

Need Help? Australia Call +61 3 8792 3600 or Email customerservice@hendrickson.com.au
New Zealand Call +64 9 570 4721 or Email nz-customerservice@hendrickson.co.nz



www.hendrickson.com.au

HENDRICKSON ASIA PACIFIC PTY LTD
ABN 21 004 992 769
32- 44 Letcon Drive, P.O. Box 1063
Dandenong, Victoria, 3175
61.3.8792.3600 • Fax 61.3.8792.3699

HENDRICKSON NEW ZEALAND
Unit P, 24 Allright Place
Mt Wellington, Auckland, 1060
64.9.570.4721 • Fax 64.9.570.4816