

H PARTS LIST

AIRTEK® NXT Integrated Front Air Suspension and Twin Steer Axle System for Tadano Truck Crane Vehicles

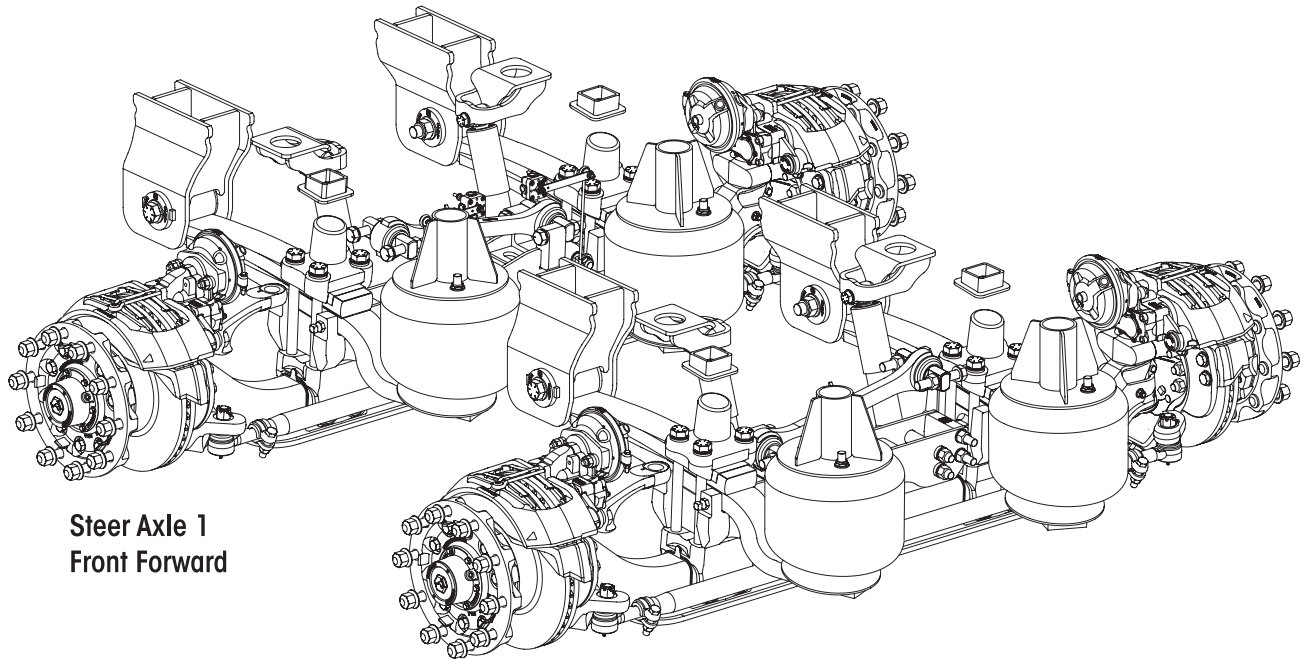
LIT NO: SP-358

DATE: March 2026

REVISION: C

CONTENTS

DESCRIPTION	PAGE
Parts List	2
Air Disc Brakes	4

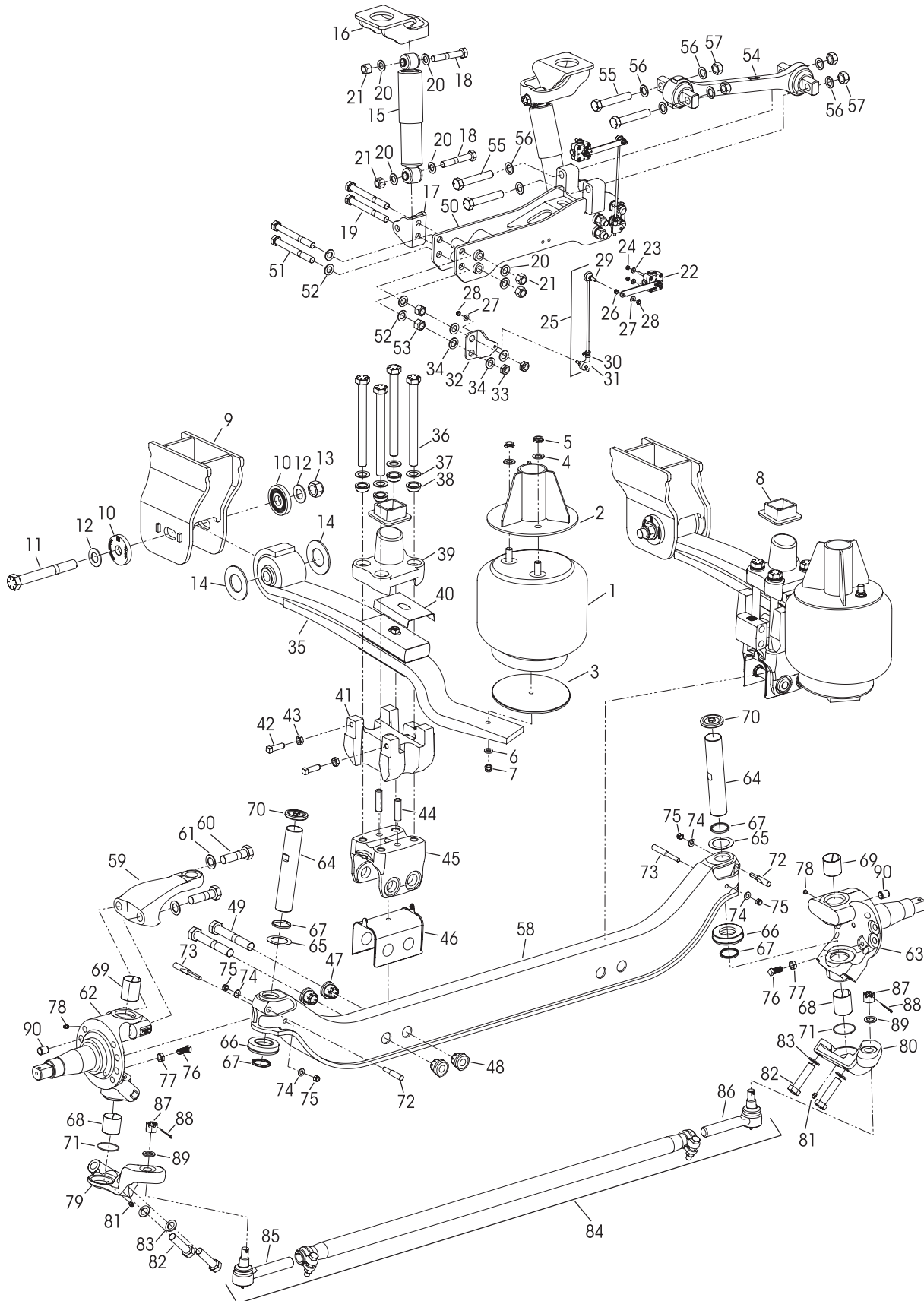


**Steer Axle 1
Front Forward**

**Steer Axle 2
Front Rear**

Steer Axle 1: Front Forward • Steer Axle 2: Front Rear
25.6K Pound Capacity per Axle

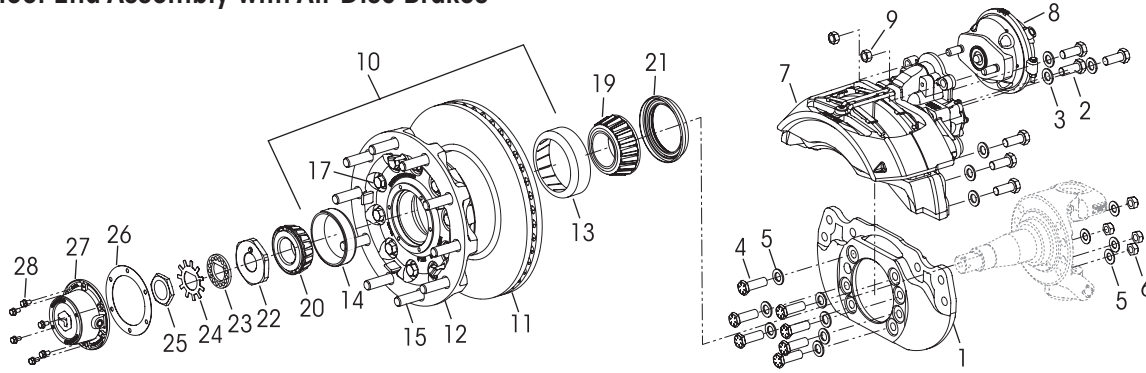
385 mm (15.16") Ride Height



AIRTEK® NXT Twin Steer Axle & Suspension System for Tadano Truck Crane Vehicles

VEHICLE				VEHICLE			
KEY NO.	PART NO.	DESCRIPTION	QTY.	KEY NO.	PART NO.	DESCRIPTION	QTY.
1	93029-001	Air Spring Assembly	4	46	78887-002	Axle Seat Liner	4
2	91798-100	**Upper Air Spring Bracket (Welded to Frame)	4			*Axle Collar	
3	91125-101	Lower Air Spring Spacer	4	47		Non-threaded	8
4	22962-001	¾" Upper Air Spring Flat Washer	8	48		Threaded	8
5	17700-031	¾"-16 UNF Upper Air Spring Nylon Locknut	8	49		*1"-8 x 6½" Hex Bolt	8
6	22962-014	½" Lower Air Spring Hardened Washer	4	50		Axle Bracket	
7	17700-010	½"-13 UNC Lower Air Spring Locknut	4		91796-101	Axle 1	1
8	93860-100	**Axle Stop Bracket (Welded to Frame)	4		91796-102	Axle 2	1
9		**Frame Hanger Assembly		51	58917-009	¾"-10 UNC x 7" Hex Bolt	8
	79835-101	Left Hand	2	52	22962-001	¾" Flat Washer	16
	79835-102	Right Hand	2	53	17491-026	¾"-10 UNC Jam Nut	4
	60632-048	QUIK-ALIGN Collar Service Kit, One Wheel End, Includes Key Nos. 10-14		54	8232-2121-500	TRAAX ROD® Torque Rod Assembly	2
10		*QUIK-ALIGN Concentric Collar	8	55	30418-011	⅞"-14 UNF x 5" Hex Bolt	8
11		*1 ⅞" x 12-8G x 9" Hex Bolt	4	56	22962-055	⅞" Flat Washer	16
12		*1 ⅞" Hardened Washer	8	57	04842-000	⅞"-14 UNF Locknut	8
13		*1 ⅞" x 12 UNF Locknut	4	58	77284-015	STEERTEK NXT Axle	2
14		*Thrust Washer 8		59	79850-103	Steering Arm	2
15	77538-003	Shock Absorber	4	60	30550-040	1"-14 UNF x 3¼" Hex Bolt, <i>Replaces 30550-027</i>	8
16	91794-100	**Upper Shock Bracket (Welded to Frame)	4	61	22962-051	1" Flat Washer	8
17	91795-012	Lower Shock Bracket	4			Knuckle Assembly, Includes Key Nos. 68, 71, 76-78, 90	
18	58917-022	¾"-10 UNC x 4.5" Shock Hex Bolt	8	62	77243-001	Left Hand	2
19	58917-009	¾"-10 UNC x 7" Lower Shock Bracket Hex Bolt	8	63	77243-102	Right Hand	2
20	22962-001	¾" Flat Washer	24		34013-230	Kingpin Service Kit, One Side Includes Key Nos. 64-75, 82-83	
21	49842-000	¾"-10 UNC Locknut	16	64	75923-001	Kingpin	4
22	60841-100	Height Control Valve Assembly	2	65		Kingpin Shim (As needed for service)	4
23		*¼" Hardened Washer	4	a	77241-002	0.01" Thickness	
24		*¼"-20 UNC Locknut	4	b	77241-003	0.02"	
25		Linkage Rod Assembly 308 mm, Includes Key Nos. 26-31		66	75918-001	Thrust Bearing	4
	58994-058	Left Hand	1	67	75966-001	Kingpin Seal	8
	58994-059	Right Hand	1	68	75919-001	Lower Kingpin Bushing	4
26		*⅝"-18 UNC Jam Nut	4	69	75919-002	Upper Kingpin Bushing	4
27		*⅞" Flat Hardened Washer	4	70	77209-001	Grease Cap	4
28		*⅝"-18 UNC Locknut	4	71	68303-004	O-Ring	4
29		*⅝"-18 UNC Stud	4			Kingpin Draw Key	
30		*Valve Arm Clamp	2	72	75925-001	Upper, 3⅞" Length	2
31		*Adjustable Valve Arm Joint	2	73	75925-002	Lower, 4¾" Length	2
32	91795-013	Lower Linkage Bracket	2	74	22962-054	⅞" Flat Washer	8
33	49842-000	¾"-10 UNC Locknut	8	75	17700-008	⅞"-14 UNC-2B Locknut	8
34	22962-001	¾" Flat Washer	12	76	93334-001	⅝"-11 UNC x 1 ½" Stop Bolt	4
		Leaf Spring & Clamp Group Assembly, Includes Key Nos. 35-49		77	17491-023	⅝"-11 UNC-2B Jam Nut	4
	80002-101	Left Hand	2	78	33117-000	Grease Zerk	4
	80002-102	Right Hand	2			Tie Rod Arm Assembly, Includes Key No. 81	
35		Leaf Spring Assembly, includes bushings & Liners		79a	77244-043	Left Hand, Axle 1	1
	82417-000	Left Hand	2	b	77244-045	Left Hand, Axle 2 (Not Shown)	1
	82418-000	Right Hand	2	80a	77244-044	Right Hand, Axle 1	1
	34013-511	Leaf Spring Clamp Group Fastener Service Kit, One Wheel End, Includes Key Nos 36-38		b	77244-046	Right Hand, Axle 2 (Not Shown)	1
36		*1"-8 UNC x 11" Hex Bolt	16	81	33117-000	Grease Zerk	2
37		*1" Flat Washer	16	82	30418-015	⅞"-14 UNF x 3¼" Hex Bolt, <i>Replaces 30418-014</i>	8
38		*1" Spherical Washer	16	83	22962-002	⅞" Flat Washer	8
39	80380-001	Top Pad	4	84	93759-001	Tie Rod Assembly, Heavy-duty Straight Includes Key Nos. 85-87	2
40	79273-001	Leaf Spring Liner	4			Tie Rod End Service Kits,	
41		Bottom Cap			60961-890	Axle Set, Includes Kit Nos. 60961-889 and -888	
	80379-101	Left Hand	2		60961-889	Left Hand, Includes Key Nos. 85, 87-89	
	80379-102	Right Hand	2		60961-888	Right Hand, Includes Key Nos. 86-89	
42	80483-001	⅝" x 2" Set Screw	8			Tie Rod End, Includes Key No. 87	
43	17491-023	⅝"-11 UNC-2B Jam Nut	8	85	80745-001	Left Hand	2
44	79847-001	¾" x 2¾" Dowel Pin	8	86	80745-002	Right Hand	2
45	91799-000	Axle Seat	4	87		*⅞"-14 UNF-2A Castle Nut	4
	34013-512	Axle Clamp Collar Service Kit, One Side Includes Key Nos. 46-49		88	17800-004	Cotter Pin	4
				89	22962-002	⅞" Flat Washer	4
				90	64246-000	ABS Sensor Sleeve	4

■ Wheel End Assembly with Air Disc Brakes



KEY NO.	PART NO.	DESCRIPTION	VEHICLE QTY.
1		***Knott Torque Plate Assembly, Includes Key Nos. 4-6 Single Left Hand Kit Part No. 851120-012 Single Right Hand Kit Part No. 851120-011	2 2
2		***Knott M18 x 45 mm Bolt Part No. 880004-004	24
3		***Knott M18 Flat Washer Part No. 880010-005	24
4	80345-004	¾"-16 x 2¼" Bolt	28
5	22962-001	¾" Flat Washer	40
6	80691-001	¾" Locknuts	12
7		***Knott Air Disc Brake Caliper Assembly RH Part No. 108116.02 LH Part No. 108116.01 RH Part No. 108116.04, w/Reduced Copper Pad LH Part No. 108116.03, w/Reduced Copper Pad	2 2 2 2
8		***WABCO Brake Chamber, Includes Key No. 9 Left Hand Part No. 4235061340 Right Hand Part No. 4235061350	2 2
9		*M16 Nut	8
10		***WEBB Hub and Rotor Assembly, Includes Key Nos. 11-18, Part No. 25325XJ3T	4
11		*Disc Brake Rotor Part No. 560958	2

KEY NO.	PART NO.	DESCRIPTION	VEHICLE QTY.
12		*Hub Assembly, Includes Key Nos. 13-14 Part No. 25321-0T	2
		***Timken Bearing Set Part No. 423, Includes Key Nos. 13, 19 Part No. 424, Includes Key Nos. 14, 20	
13		*Inner Bearing Cup Part No. 6420	2
14		*Outer Bearing Cup Part No. 552A	2
15		*M22 Wheel Stud, Part No. 101162	10
16		*M22 Lug Nuts, Part No. 179935 (Not Shown)	10
17		*5/8" Flange Screw Part No. 85732	10
18		*ABS Ring Part No. 51049 (Not Shown)	1
19		*Inner Bearing Cone Part No. 6461A	4
20		*Outer Bearing Cone Part No. 555S	4
21		***DRiV Wheel Hub Seal, 4.375" x 5.918" Part No. 380048A	4
22	79367-000	Spindle End 1¾" Locknut	4
23	79368-000	Spindle End 1¾" Lock Washer	4
24	79369-000	Spindle End Washer	4
25	79370-000	Spindle End Outside Nut	4
26		***DRiV Hub Cap Gasket Part No. G-3009	4
27		***DRiV Hub Cap Part No. 343-009	4
28		*5/16"-18 UNC x ¾" Hex Bolt with Lock Washer	24

NOTES: Quantities specified are shown for a twin steer axle system, service kit components may vary from amount shown in lists.

* Item included in kit/assembly only, part not sold separately.

** Item supplied by Hendrickson, this component is welded to the frame by the vehicle manufacturer. For assistance with maintenance and service instructions contact the vehicle manufacturer.

*** These components are installed by Hendrickson for new production assembly but not supplied for aftermarket service purposes. Description and part number listed for reference only. For more information and assistance with service, maintenance and rebuild instructions on these components see below component manufacturers:

- **DRiV Incorporated** 800.325.8886 or www.drivparts.com
- **Knott Brake Company** 330-948-0144 or www.knottbrake.com
- **The Timken Company** 866.984.6536 or www.timken.com/resources
- **WABCO-ZF Friedrichshafen** 855.228.3203 or www.wabco-customercentre.com
- **Webb Wheel Products** 800.633.3256 or www.webbwheel.com

This is a general parts list to provide directional information. Components may vary by model. Questions in regards to parts, contact Hendrickson Truck Parts at 1.866.755.5968 (Toll-free U.S. and Canada), 630.910.2800 (Outside U.S. and Canada) or email: truckparts@hendrickson-intl.com during normal business hours.

Actual product performance may vary depending upon vehicle configuration, operation, service and other factors.

All applications must comply with applicable Hendrickson specifications and must be approved by the respective vehicle manufacturer with the vehicle in its original, as-built configuration. Contact Hendrickson for additional details regarding specifications, applications, capacities, and operation, service and maintenance instructions.

Call Hendrickson at 630.910.2800 or 855.RIDERED (855.743.3733) for additional information.



www.hendrickson-intl.com

TRUCK COMMERCIAL VEHICLE SYSTEMS
800 South Frontage Road
Woodridge, IL 60517-4904 USA
855.743.3733 (Toll-free U.S. and Canada)
630.910.2800 (Outside U.S. and Canada)
Fax 630.910.2899

SP-358 Rev C 03-26

© 2026 Hendrickson USA, L.L.C. All Rights Reserved. All trademarks shown are owned by Hendrickson USA, L.L.C., or one of the affiliates, in one or more countries.

Information contained in this literature was accurate at the time of publication. Product changes may have been made after the copyright date that are not reflected.

Printed in United States of America