

H PARTS LIST

STEERTEK™ NXT High-capacity Front Steer Axle and Integrated Suspension System for Edison Motors Truck Vehicles

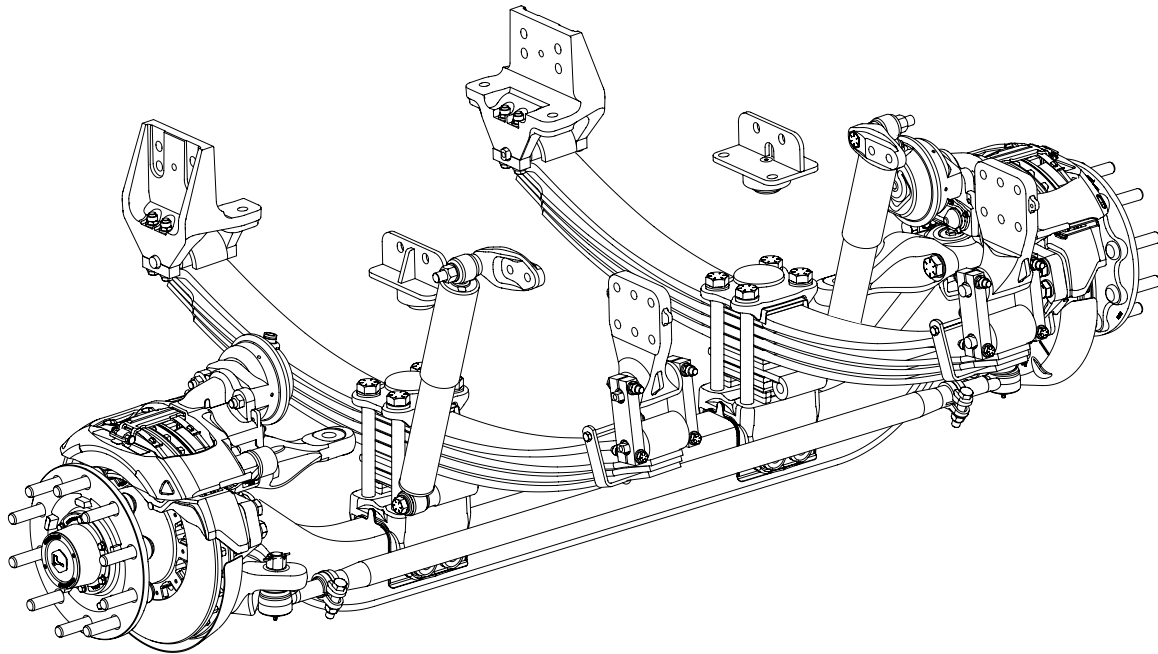
LIT NO: SP-365

DATE: March 2026

REVISION: A

CONTENTS

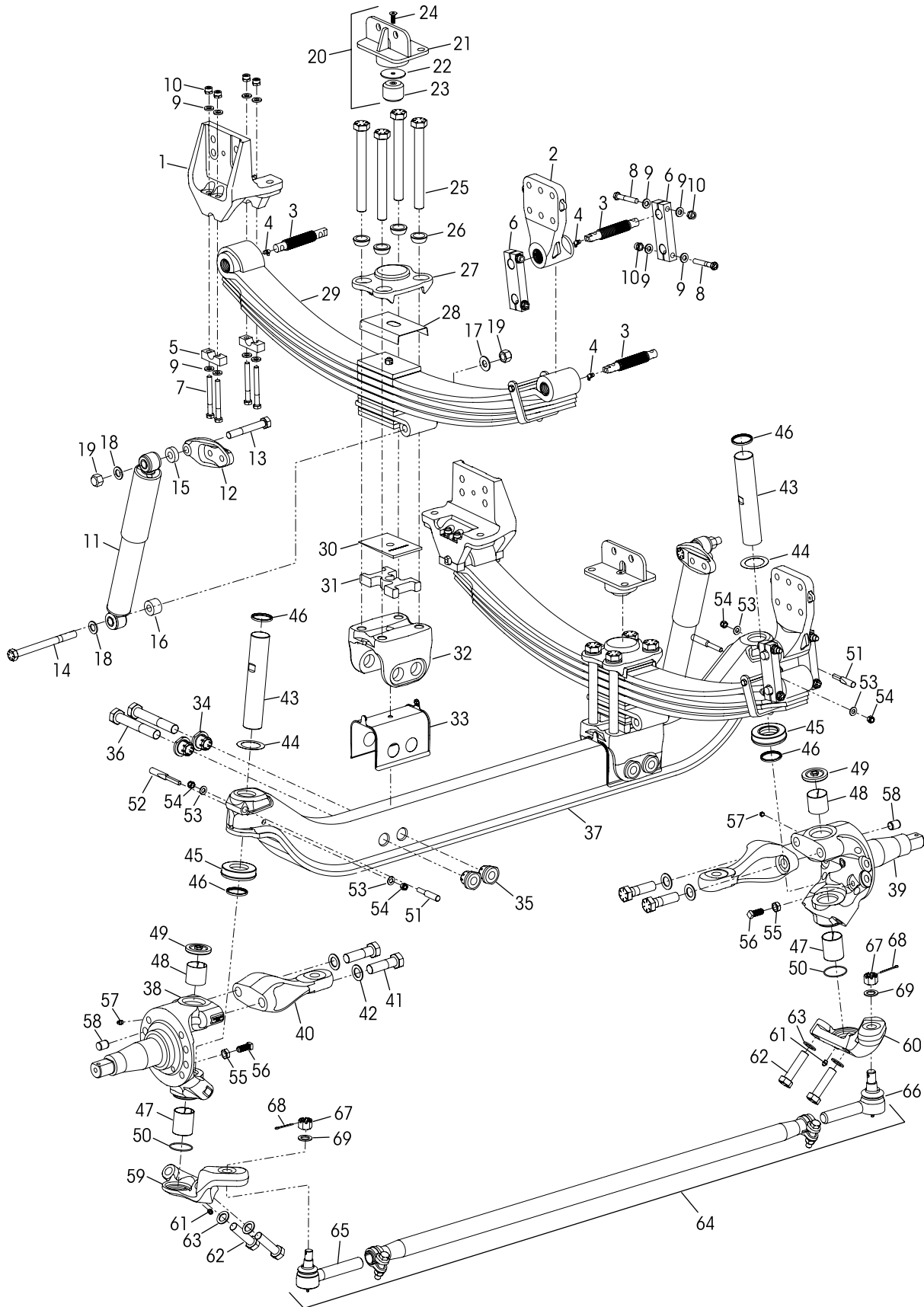
DESCRIPTION	PAGE
Parts Lists	
■ Suspension • Axle • Clamp Group Assembly . . 2	
■ Air Disc Brake Assembly 4	
Special Tools 3	





■ 20K Pound Capacity

Ride Height 10.5"





STEERTEK™ NXT High-capacity Steer Axle & Suspension System for Edison Motors

KEY NO.	PART NO.	DESCRIPTION	VEHICLE QTY.	KEY NO.	PART NO.	DESCRIPTION	VEHICLE QTY.
1	79894-003	Frame Hanger Assembly Front	2	34		Axle Clamp Non Threaded (Bolt Side)	4
2	80159-005	Rear with Bushing	2	35		Threaded (Tie Rod Side)	4
		Frame Hanger Fastener Service Kit, One Side		36		*1"-8 UNC x 6½" Hex Cap Bolt	4
	34013-258	Front, Includes Key Nos. 5, 7, 9-10			95170-200	STEERTEK NXT High-capacity Axle Assembly, Includes Key Nos. 37-69	1
	34013-257	Rear, Includes Key Nos. 3-4, 6, 8-10		37	95170-200	Axle	1
	34013-249	Single Threaded Pin and Grease Zerk Service Kit, Includes Key Nos. 3-4				Knuckle Assembly, Includes Key Nos. 46, 49, 55-58	
3		*Threaded Pin	6	38	77243-001	Left Hand	1
4		*Grease Fitting	6	39	77243-002	Right Hand	1
5	79843-000	Front Hanger Bottom Cap	4	40	77337-012	Steering Arm	2
6	79888-001	Rear Shackles	4	41	30550-040	1"-14 UNF x 3¼" Hex Bolt	4
7	80362-001	½"-20 UNF x 4½" Bolt	8	42	22962-051	1" Flat Washer	4
8	80362-002	½"-20 UNF x 3¼" Bolt	8		34013-230	Kingpin Service Kit, One Side Includes Key Nos. 43-54, 62-63	
9	22962-014	½" Hardened Washer	32	43	75923-001	Kingpin	2
10	17700-034	½"-20 UNF Nylocknut	16	44	77241-002	Kingpin Shim (As needed for service)	2
11	80606-001	Shock Absorber	2	45	75918-001	Thrust Bearing	2
	34013-317	Single Shock Fastener Service Kit, Includes Key Nos. 12-19		46	75966-001	Kingpin Seal	4
12	78250-002	Shock Bracket	2			Kingpin Bushing	
13	50764-008	¾"-10 UNC x 5" Upper Shock Bolt	2	47	75919-001	Lower - 2½" Length	2
14	50764-014	¾"-10 UNC x 8½" Lower Shock Hex Bolt	2	48	75919-002	Upper - 2" Length	2
		Nyu Shock Spacer	2	49	77209-001	Grease Cap	2
15	59946-005	3 mm, Upper		50	68303-004	O-ring	2
16	59946-006	13.2 mm, Lower Outboard				Kingpin Draw Key	
17	59946-015	28 mm, Lower Inboard		51	75925-001	Upper - 3¾" Length	2
18	22962-001	¾" Flat Washer	4	52	75925-002	Lower - 4¾" Length	2
19	49842-000	¾"-10 UNC Locknut	4	53	22962-054	7/16" Flat Washer	4
20	93558-000	Jounce Stop Assembly, Includes Key Nos. 21-24	2	54	17700-008	7/16"-14 UNC-2B Nut	4
21		*Jounce Stop	2	55	17491-023	5/8"-11 UNC-2B Jam Nut	2
22		*Spacer	2	56	93334-001	5/8"-11 UNC x 1 ½" Stop Bolt	2
	34013-505	Jounce Stop Service Kit, One Side, Includes Key Nos. 23-24		57	33117-000	Grease Zerk	2
23		*Rubber Bump Stop	2	58	64246-000	ABS Sensor Sleeve	2
24		*M10 x 1.5 x 30 mm Flat Socket Cap Screw	2			**Tie Rod Arm Assembly, Includes Key No. 61	
	95170-100	Leaf Spring & Clamp Group Assembly, Includes Key Nos. 25-36	2	59	77244-027	Left Hand	1
	34013-474	Clamp Group Fasteners Service Kit, One Side Includes Key Nos. 25-26, 28		60	77244-028	Right Hand	1
25	64107-007	1"-8 UNC x 9½" Hex Bolt	8	61	33117-000	Grease Zerk	2
26	78356-002	1" Spherical Washer	8	62	30418-015	7/8"-14 UNF x 3¼" Hex Bolt	4
27	78888-000	Top Pad with Jounce Stop	2	63	22962-002	7/8" Flat Washer	4
28	79273-001	Spring Liner	2	64	80721-003	**Straight Tie Rod Assembly, Includes Key Nos. 65-67	1
29	82379-200	Leaf Spring Assembly with Bushings	2			**Tie Rod End Service Kits, Straight	
30	80143-001	Caster Wedge	2	60961-890		Axle Set, Includes Kit Nos. 60961-888 and -889	
31	79814-000	Spring Spacer	2	60961-889		Left Hand, Includes Key Nos. 65, 68-69	
32	77232-000	Axle Seat	2	60961-888		Right Hand, Includes Key Nos. 66, 68-69	
	34013-229	Axle Clamp Service Kit, One Side Includes Key Nos. 33-36				Tie Rod End, Includes Key No. 47	
33	78887-001	Axle Seat Liner	2	65	80745-001	Left Hand	1
				66	80745-002	Right Hand	1
				67		*7/8" Castle Nut	2
				68	17800-004	Cotter Pin	2
				69	22962-002	7/8" Flat Washer	2

NOTES: * Item included in assembly only, part not sold separately.

Special Tools

Hendrickson does not supply these tools. Contact tool manufacturer.

KINGPIN BUSHING TOOLS

ADJUSTABLE STRAIGHT FLUTE REAMER
2.00" to 2.01" Cutting Diameter
McMaster-Carr #3141A28



PRECISION-FINISH CYLINDER HONE
1.75" to 2.75" Cylinder ID
McMaster-Carr #7362A445



EXTENSION PILOT TOOL
for 1.78" to 2.09" Adjustable Reamer
McMaster-Carr #3004A32



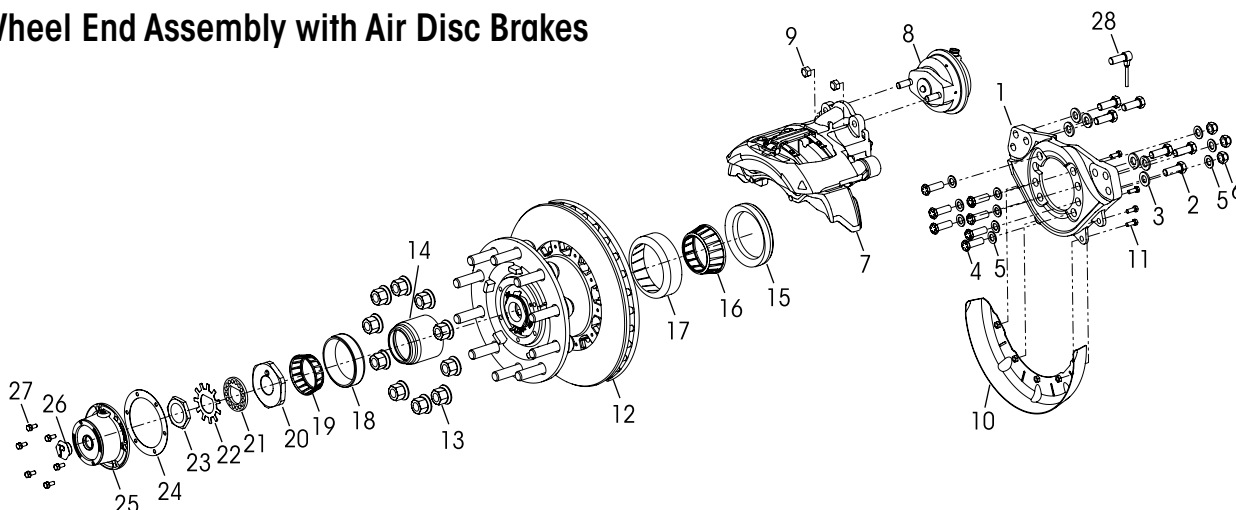
STEERING STOP BOLT JAM NUT TOOL

DUAL OPEN-END WRENCH
15/16" - 60°/15° Angle Wrench
Martin Tools #3719





Wheel End Assembly with Air Disc Brakes



KEY NO.	PART NO.	DESCRIPTION	VEHICLE QTY.
1		*Bendix Torque Plate Assembly, ADB22X Left Hand, Part No. K138452 Right Hand, Part No. K138451	1 1
2	SA-13200-2	M20 x 60 mm Hex Head Screw	12
3	58246-007	M20 Flat Washer	12
4	80345-004	3/4"-16 UNC x 2 1/4" Hex Bolt	14
5	22962-001	3/4" Flat Washer	20
6	80691-001	3/4"-16 UNC Locknut	6
7		*Bendix Air Disc Brake Caliper Assembly Left Hand, Part No. K288289 Right Hand, Part No. K288288	1 1
8		*Bendix T20 Air Chamber Part No. K112904	2
9		*Hex Locknut	4
10		*Bendix Dust Shield, Part No. K123970	2
11	58035-001	3/8"-16 UNC x 1" Bolt	8
12		*ConMet Hub and Rotor Assembly Part No. 10087600, Includes Bearings and Seals	2
13		**M22 x 1.5 Two-piece Wheel Nut *ConMet Hub Bearing Rebuild Kit No. 10081728, One Wheel End, Includes Key Nos. 14-19	20

KEY NO.	PART NO.	DESCRIPTION	VEHICLE QTY.
		*ConMet Wheel Seal Kit No. 10081519, One Wheel End, Includes Key Nos. 14-15	
14		*Bearing Spacer Part No. 10034342	
15		*Wheel Seal Part No. 10080435	
16		*Inner Bearing Cone Part No. 10041922	
17		*Inner Bearing Cup Part No. 10041921	
18		*Outer Bearing Cup Part No. 10041923	
19		*Outer Bearing Cone Part No. 10041924	
20	79367-000	1 3/4" Spindle End Locknut	2
21	79368-000	1 3/4" Spindle End Lockwasher	2
22	79369-000	Spindle End Washer	2
23	79370-000	Spindle End Outside Nut	2
24		*Drivparts Hub Cap Gasket No. G-3009	2
25		*Drivparts Hub Cap Part No. 343-009, Includes Key No. 26	2
26		*Rubber Plug	
27	64545-002	5/16"-18 UNC x 3/4" Hex Bolt with Retained Washer	12
28	64550-000	ABS Sensor Clip	2

NOTES: * These components are installed by Hendrickson for new production assembly but not supplied for aftermarket service purposes. Description and part number listed for reference only. For more information and assistance with service, maintenance and rebuild instructions on these components see below component manufacturers:

- **Bendix** 800-AIR-BRAKE or www.bendix.com/en/services-and-support/b2bendix-quick-links, www.bendix.com/en/services-and-support/brake-school (training)
- **ConMet** 800-547-9473 or www.conmet.com
- **DRiV Incorporated** 800-325-8886 or www.drivparts.com

** Not supplied by Hendrickson, used for reference only. Contact vehicle manufacturer for more information.

This is a general parts list to provide directional information. Components may vary by model. Questions in regards to parts, contact Hendrickson Truck Parts at 855.743.3733 (Toll-free U.S. and Canada), 630.910.2800 (Outside U.S. and Canada) or email: truckparts@hendrickson-intl.com.

Actual product performance may vary depending upon vehicle configuration, operation, service and other factors. All applications must comply with applicable Hendrickson specifications and must be approved by the respective vehicle manufacturer with the vehicle in its original, as-built configuration. Contact Hendrickson for additional details regarding specifications, applications, capacities, and operation, service and maintenance instructions.

Call Hendrickson at 630.910.2800 or 855.RIDERED (855.743.3733) for additional information.



www.hendrickson-intl.com

TRUCK COMMERCIAL VEHICLE SYSTEMS
800 South Frontage Road
Woodridge, IL 60517-4904 USA
855.743.3733 (Toll-free U.S. and Canada)
630.910.2800 (Outside U.S. and Canada)
Fax 630.910.2899

SP-365 Rev A 03-26

© 2026 Hendrickson USA, L.L.C. All Rights Reserved. All trademarks shown are owned by Hendrickson USA, L.L.C., or one of the affiliates, in one or more countries.

Information contained in this literature was accurate at the time of publication. Product changes may have been made after the copyright date that are not reflected.

Printed in United States of America