

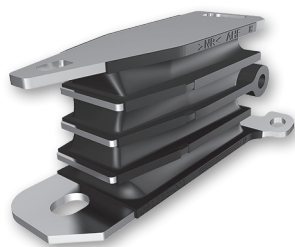
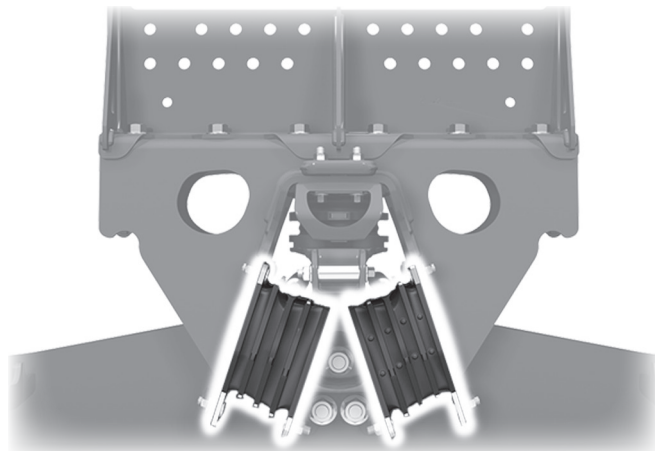
BOLSTER SPRINGS

Genuine Parts



- Engineering expertise
- Outstanding performance
- Genuine Hendrickson Parts

Hendrickson Bolster Springs* incorporate unique designs and high-grade rubber to boost performance and withstand heavy loads in rugged applications. For aftermarket replacement of the springs, Hendrickson supplies the same genuine components for service purposes as installed in our original suspensions. These components have the same design, construction and performance, which helps ensure high end user satisfaction and peak system performance. Correct setup and regular inspections are key in maintaining optimum bolster spring and suspension operation.



HAULMAAX® EX Bolster Springs

- Extra wide bolster spring centers and a unique progressive load spring provide exceptional stability for demanding applications such as refuse, concrete mixers and dump.
- The optimized angle allows bolster springs to carry the majority of the payload and still react to braking and accelerating forces with minimal displacement.



HAULMAAX® Shown

**Tie-Bar Design

- While mandatory for 46,000 and 52,000 lb capacity suspensions, an optional tie-bar version is also available for 40,000 lb capacity suspensions.
- Provides greater bolster column stiffness.
- Improves suspension performance even when axles are misaligned.
- Remains consistent with the ride quality and stability of the original design.



HAULMAAX Bolster Springs

- Haulmaax bolster springs work in conjunction with the load springs and shim plates to provide outstanding ride quality in both loaded and unloaded conditions.
- Load spring shims can be adjusted for different empty body weights, making Haulmaax suspensions another ideal choice for trucks being used in varying applications.



HN® Bolster Springs

- Proprietary rubber compounds are used to provide ideal articulation and ride quality.
- As payload increases, the bolster springs continue to compress until the load springs engage. This produces a secondary system stiffness that provides extra ride stability under loaded conditions.
- HN bolster springs absorb vertical road inputs as well as fore/aft shock to deliver superior driver comfort and handling.

NOTE:* Bolster springs should always be replaced with Hendrickson genuine bolster springs and in pairs per beam. For more information, refer to Hendrickson Technical Publication Nos. 17730-328 (HAULMAAX EX), 17730-244 (HAULMAAX) and 17730-227 (HN) available online: www.hendrickson-intl.com.

** Tie-bar bolster springs are available for both HAULMAAX EX and HAULMAAX 46K and 52K lb capacities suspensions and offered as an aftermarket option for the HAULMAAX EX and HAULMAAX 40K lb capacity.

To learn more about Hendrickson Genuine Parts call 855.743.3733 or visit www.maaxuptime.com

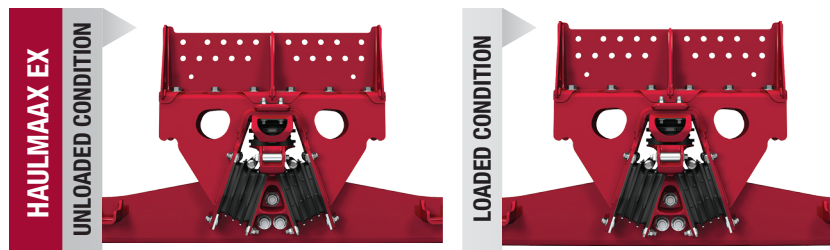
HENDRICKSON
The World Rides On Us®

GENUINE PARTS Bolster Springs

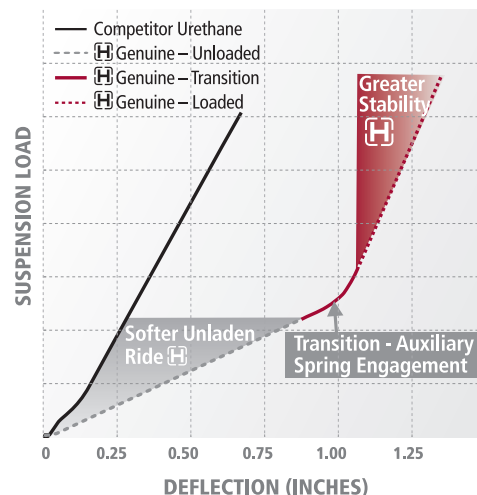
Shear and Compression Bolster Spring Loads

The shear load component enables high suspension articulation and a lower unladen suspension spring rate. The compression load component allows the suspension to carry heavy loads. Trust genuine Hendrickson bolster springs to deliver these benefits and enable HAULMAAX EX, HAULMAAX and HN suspensions to operate and perform as designed.

For optimum performance, HAULMAAX EX, HAULMAAX and HN suspension systems require a soft spring rate when unloaded and a stiff spring rate when loaded. Typical competitor urethane bolster springs do not meet Hendrickson's spring rate criteria, and their use will void any applicable Hendrickson warranty. In addition, competitor urethane bolsters can degrade ride quality and create excessive stress on the suspension. Hendrickson does not authorize the use of competitor urethane components in any HAULMAAX EX, HAULMAAX and HN suspension system.



HN Bolster Spring System Stiffness Hendrickson Genuine vs. Competitor Urethane



Above data is based upon internal testing. Actual product specifications and performance may vary on suspension and vehicle configuration, operation, service and other factors.

BOLSTER SPRING SERVICE KITS

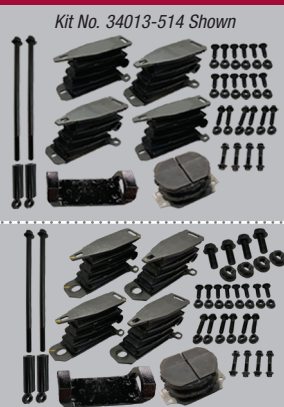
HAULMAAX EX Vehicles built prior to July 15, 2024

Kit No. 34013-526, One Beam (40K lb capacity)

- (4) Bolster Springs
- (1) Jounce Stop
- (1) Progressive Load Spring
- (8) M12 x 35 mm Round Head Square Neck Bolts
- (6) M12 x 50 mm Flange Bolts
- (4) M12 x 65 mm Flange Bolts
- (18) M12 Flange Nuts
- (4) M20 x 50 mm Flange Bolts
- (4) M20 Flange Nuts

Kit No. 34013-527, One Beam (Tie-Bar, 46K•52K lb capacity)

- (4) Tie-Bar Bolster Springs
- (2) Tie-Bar Bolster Spring Spacers
- (1) Jounce Stop
- (1) Progressive Load Spring
- (8) M12 x 35 mm Round Head Square Neck Bolts
- (6) M12 x 50 mm Flange Bolts
- (4) M12 x 65 mm Flange Bolts
- (2) M12 x 270 mm Flange Bolts
- (18) M12 Flange Nuts
- (4) M20 x 50 mm Flange Bolts
- (4) M20 Flange Nuts



Kit No. 34013-527 Shown

HAULMAAX EX Vehicles built after July 15, 2024

Kit No. 34013-514, One Beam (Tie-Bar, 46K•52K lb capacity)

- (4) Tie-Bar Bolster Springs
- (2) Tie-Bar Bolster Spring Spacers
- (1) Jounce Stop
- (1) Progressive Load Spring
- (12) M12 x 35 mm Round Head Square Neck Bolts
- (6) M12 x 50 mm Flange Bolts
- (4) M12 x 65 mm Flange Bolts
- (2) M12 x 270 mm Flange Bolts
- (22) M12 Flange Nuts

Kit No. 34013-513, One Beam (40K lb capacity)

- (4) Bolster Springs
- (1) Jounce Stop
- (1) Progressive Load Spring
- (12) M12 x 35 mm Round Head Square Neck Bolts
- (6) M12 x 50 mm Flange Bolts
- (4) M12 x 65 mm Flange Bolts
- (22) M12 Flange Nuts

HAULMAAX



Tie-Bar Bolster Springs and Progressive Load Spring Service Kit No. 60961-712

- (2) Tie-Bar Bolster Spring Kit No. 64179-048
- (1) Progressive Load Spring Kit No. 60961-745



Tie-Bar Bolster Springs Service Kit No. 64179-048

- (2) Tie-Bar Bolster Springs
- (1) Bolster Spring Spacer
- (1) Wear Plate
- (1) 1/2" Tie-bar Bolt
- (9) 1/2" Flange Locknuts



Bolster Springs Service Kit No. 64179-049

- (2) Bolster Springs
- (1) Wear Plate
- (8) 1/2" Flange Locknuts

HN



Bolster Springs Service Kit No. 60879-000
Vehicles built after Feb. 1996

- (2) Bolster Springs

Bolster Springs Service Kit No. 64718-000
Vehicles built between Nov. 1988 – Feb. 1996

- (2) Bolster Springs

Actual product performance may vary depending upon vehicle configuration, operation, service and other factors.

All applications must comply with applicable Hendrickson specifications and must be approved by the respective vehicle manufacturer with the vehicle in its original, as-built configuration. Contact Hendrickson for additional details regarding specifications, applications, capacities, operation, service and maintenance instructions.

Call Hendrickson at **630.910.2800** or **855.RIDERED (743.3733)** for additional information.



TRUCK COMMERCIAL VEHICLE SYSTEMS
800 South Frontage Road
Woodridge, IL 60517-4904 USA
855.RIDERED (743.3733)
630.910.2800 • Fax 630.910.2899

www.hendrickson-intl.com



45745-215 Rev G 07-25

© 2003 – 2025 Hendrickson USA, L.L.C. All Rights Reserved. All trademarks shown are owned by Hendrickson USA, L.L.C., or one of its affiliates, in one or more countries. Information contained in this literature was accurate at the time of publication. Product changes may have been made after the copyright date that are not reflected. Printed in United States of America