

PARTS LIST

**AIRTEK® Front Air Suspension
with STEERTEK™ NXT Axle for
Thomas Built Buses
HDX and eHDX Models**

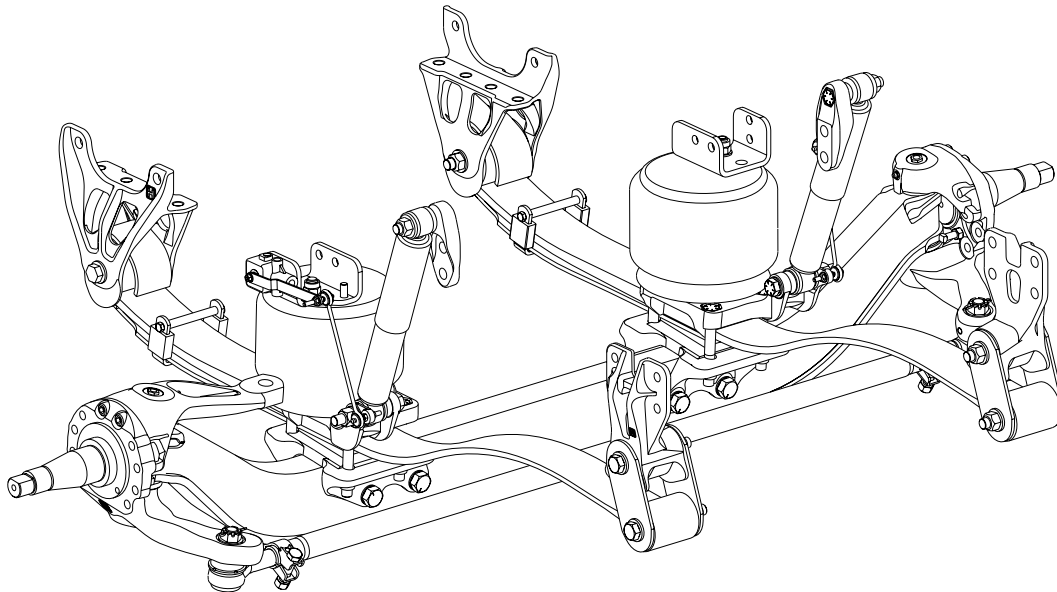
LIT NO: SP-352

DATE: July 2024

REVISION: C

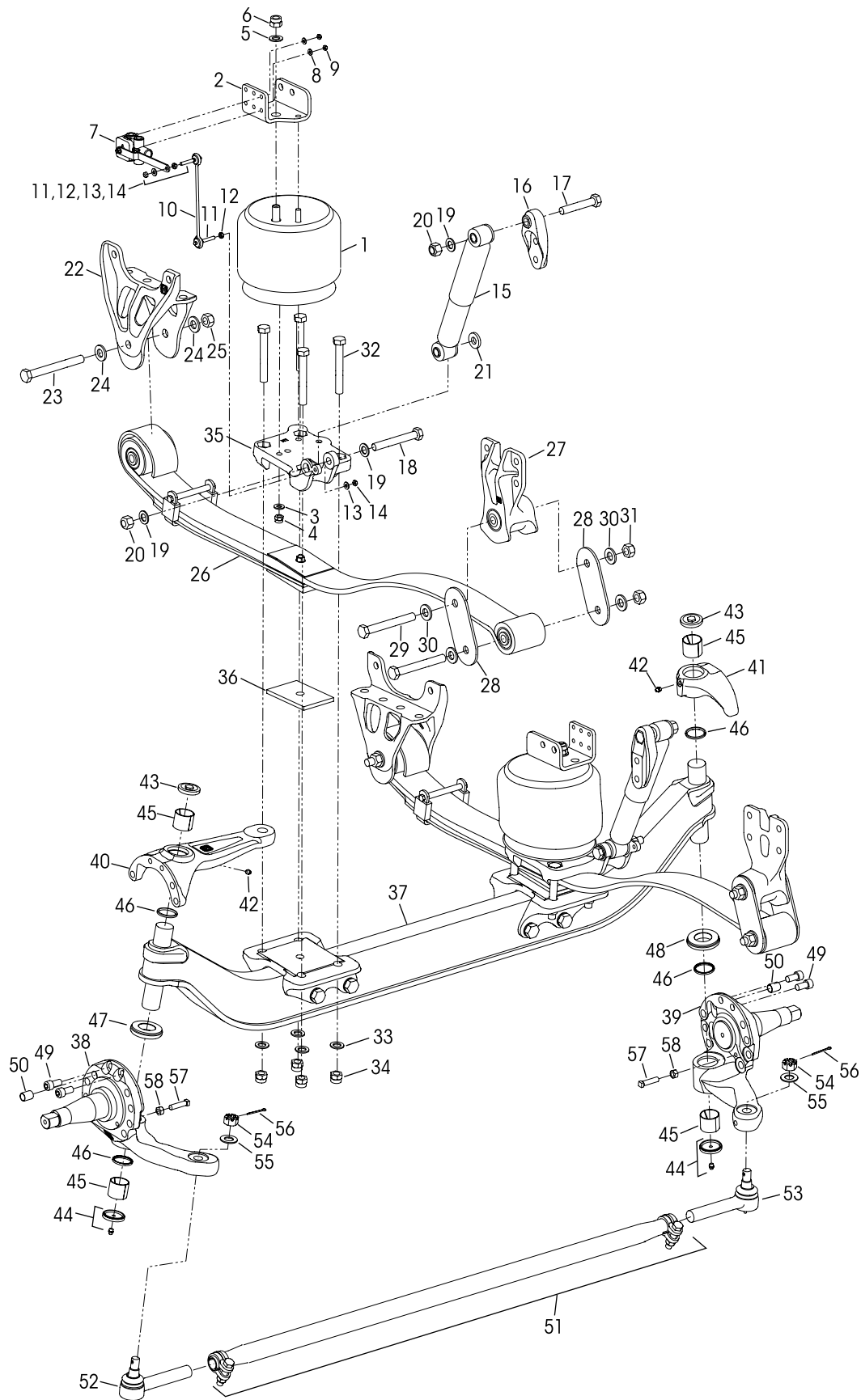
CONTENTS

DESCRIPTION	PAGE
AIRTEK with STEERTEK NXT Axle	2
Special Tools	4



AIRTEK® with STEERTEK™ NXT axle

14.7K lbs. Capacity





AIRTEK® Front Air Suspension for Thomas Built Buses – HDX • eHDX Models

KEY NO.	PART NO.	DESCRIPTION	VEHICLE QTY.	KEY NO.	PART NO.	DESCRIPTION	VEHICLE QTY.
1	66865-002	Air Spring	2			STEERTEK NXT Axle Assembly, Includes	1
2	66807-002	Upper Air Spring Bracket	2			Key Nos. 37-56	
3	22962-011	½" Flat Washer	2		93577-001	HDX	
4	66807-002	½"-13 UNC Nylon Locknut	2		93577-002	eHDX	
5	22962-001	*¾" Hardened Washer	2	37	68986-002M	Axle & Kingpin Assembly	1
6	17700-035	*¾"-16 UNF Nylon Locknut	2			Lower Steering Knuckle Assembly, Includes	1
	59013-001	Height Control Valve Assembly, Includes Key Nos. 7-9	2			Key Nos. 44-46, 57-58	
7	60501-001	Height Control Valve	1	38	58900-233	Left Hand	
8		*¼" Hardened Washer	2	39	58900-234	Right Hand	
9		*¼"-20 UNC Locknut	2			Upper Steering Knuckle Assembly, Includes	1
	66825-001	Linkage Assembly, Includes Key Nos. 10-14				Key Nos. 42-43, 45-46	
10	59428-005	Linkage	1	40	60903-274	HDX, Left Hand	
11		*⅝"-18 UNC Stud - 2.44"	2		60903-285	eHDX, Left Hand	
12		*⅝"-18 UNC Hex Nut	2	41	60904-232	Right Hand	
13		*⅝" Hardened Washer	2			Kingpin Bushing and Bearing Service Kits	
14		*⅝"-18 UNC Locknut	2		60961-628	Axle Set, Includes Kit Nos. 60961-629 & -630	
15	58913-013L	Shock Absorber	2		60961-629	Left Hand with Composite Thrust Bearing, Includes Key Nos. 42-47, 49 & Loctite	
16	67463-002	Upper Shock Bracket	2		60961-630	Right Hand with Roller Thrust Bearing, Includes Key Nos. 42-46, 48-49 & Loctite	
17	50764-010	¾"-10 UNC x 4¼" Upper Shock Bolt	2	42	33117-000	Grease Zerk	2
18	58917-003	¾"-10 UNC x 5½" Lower Shock Bolt	2	43	68687-003	Grease Cap Assembly, Upper	2
19	22962-001	¾" Hardened Washer	6	44	68687-002	Grease Cap Assembly, Lower	2
20	49842-000	¾"-10 UNC Locknut	4	45	58909-001	Kingpin Bushing	4
21	59946-013	Shock Spacer	2			Thrust Bearing Service Kits	
22	64488-002	Front Hanger	2		60961-631	Axle Set, Includes Kit Nos. 60961-632 & -633	
	34013-495	Leaf Spring Eye Fastener Service Kit, One side, Includes Key Nos. 23-25, 29-31			60961-632	Left Hand Composite Thrust Bearing, Includes Key Nos. 46-47, 49 & Loctite	
23		*M20 Hex Bolt - 180 mm	2		60961-633	Right Hand Roller Thrust Bearing, Includes Key Nos. 46, 48-49 & Loctite	
24		*M20 Hardened Washer	4	46	68731-000	Kingpin Seal	4
25		*M20 Locknut	2	47	59828-000	Left Hand Composite Thrust Bearing	1
	60961-163	Leaf Spring Assembly Service Kit, Axle Set, Includes Key Nos. 26-28		48	64256-000L	Right Hand Roller Thrust Bearing	1
26	53487-000	Leaf Spring Assembly	2	49	60236-001	⅝" Socket Head Cap Screw	4
	60961-643	Rear Shackle Service Kit, Axle Set, Includes Key Nos. 27-28		Not Shown	60937-000	Loctite® (Red) Compound Tube	1
27	66510-001	Rear Shackle Bracket with Bushing	2	50	64246-000	ABS Sensor Sleeve	2
28	64314-000	Rear Shackle Plate	4	51	76879-002	Tie Rod Assembly, Includes Key Nos. 52-54	1
29		*M20 x 160 mm Hex Bolt	4			Tie Rod End Service Kits	
30		*M20 Hardened Washer	8		60961-735	Axle Set, Includes LH and RH Kits	
31		*M20 Locknut	4		60961-742	Left Hand, Includes Key Nos. 52, 54-56	
		Clamp Group Service Kit			60961-743	Right Hand, Includes Key Nos. 53-56	
	60961-675	HDX, Includes Key Nos. 32a, 33-34				*Tie Rod End, Includes Key No. 54	
	60961-673	eHDX, Includes Key Nos. 32b, 33-34		52		Left Hand	1
32		*¾"-16 UNF Hex Bolt	8	53		Right Hand	1
a		HDX, 5½" Long		54		*⅞" Castle Nut	2
b		eHDX, 5" Long		55		*⅞" Flat Washer	2
33		*¾" Flat Washer	8	56		*Tie Rod Nut Cotter Pin	2
34		*¾"-16 UNF 2B Nylon Locknut	8		60961-069	Stop Bolt Service Kit, One Side, Includes Key Nos. 57-58	
35		Top Pad		57		*½"-13 UNC Square Head Bolt	2
	66814-001	Left Hand	1	58		*½"-13 UNC Hex Jam Nut	2
	66814-002	Right Hand	1				
36	70105-010	Front Axle Spacer, 10 mm Thickness	2				

NOTES: Quantities specified are for the vehicle. Quantities of service kit components may vary from amount shown in list.

* Item included in kit / assembly only, part not sold separately.

■ Special Tool

KINGPIN BUSHING TOOL – ADJUSTABLE STRAIGHT FLUTE REAMER

The dimension of cutting diameter must facilitate a **range of 1.781 - 2.093**



This is a general parts list to provide directional information. Components may vary by model. Questions in regards to parts, contact Hendrickson Truck Parts at 1.866.755.5968 (Toll-free U.S. and Canada), 630.910.2800 (Outside U.S. and Canada) or email: truckparts@hendrickson-intl.com available during normal business hours.

Actual product performance may vary depending upon vehicle configuration, operation, service and other factors.

All applications must comply with applicable Hendrickson specifications and must be approved by the respective vehicle manufacturer with the vehicle in its original, as-built configuration. Contact Hendrickson for additional details regarding specifications, applications, capacities, and operation, service and maintenance instructions.

Call Hendrickson at 1.866.755.5968 (toll-free) or 1.630.910.2800 for additional information.



www.hendrickson-intl.com

TRUCK COMMERCIAL VEHICLE SYSTEMS
800 South Frontage Road
Woodridge, IL 60517-4904 USA
1.866.755.5968 (Toll-free U.S. and Canada)
1.630.910.2800 (Outside U.S. and Canada)
Fax 1.630.910.2899

SP-352 Rev C 07-24

© 2023 – 2024 Hendrickson USA, L.L.C. All Rights Reserved. All trademarks shown are owned by Hendrickson USA, L.L.C., or one of the affiliates, in one or more countries.

Information contained in this literature was accurate at the time of publication. Product changes may have been made after the copyright date that are not reflected.

Printed in United States of America