

H PARTS LIST

QUIK-DRAW® PNEUMATIC PIN-PULL MECHANISM

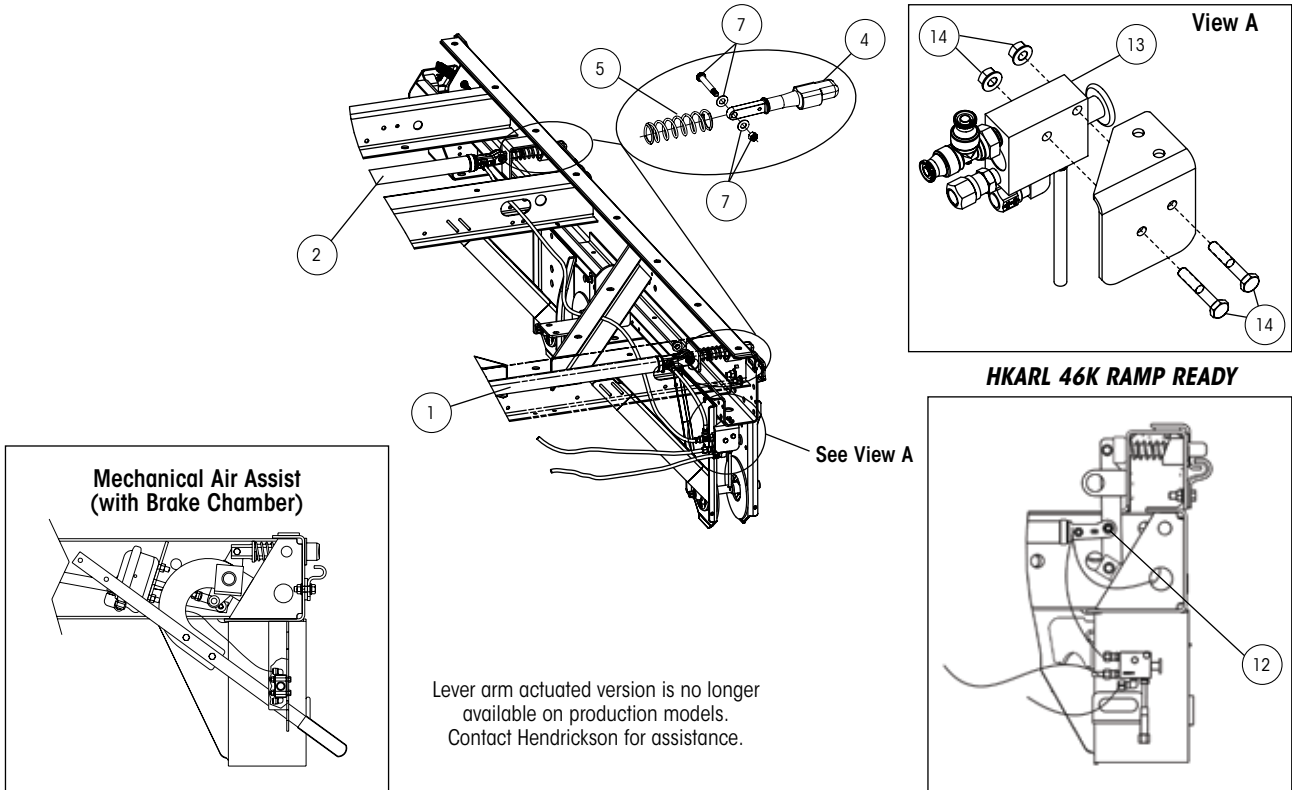
SUBJECT: Van and Platform Applications

LIT NO: L751

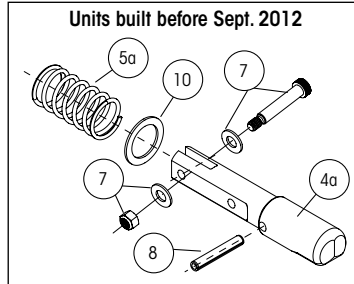
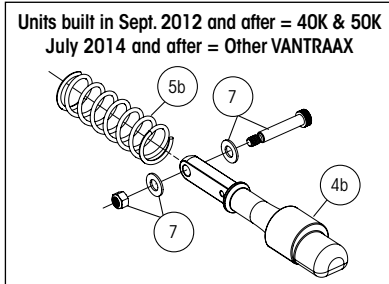
DATE: March 2025

REVISION: K

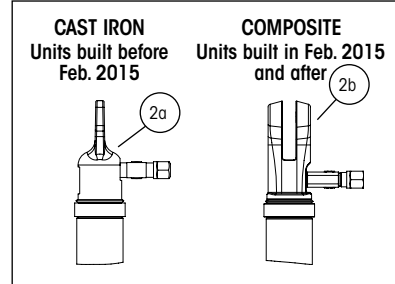
**VAN APPLICATIONS (VANTRAAX®, ULTRA-A-K® and HK™ SERIES) —
SEE PAGE 3 FOR PLATFORM APPLICATIONS (INTRAAX® SP)**



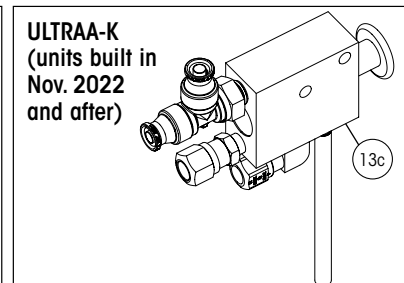
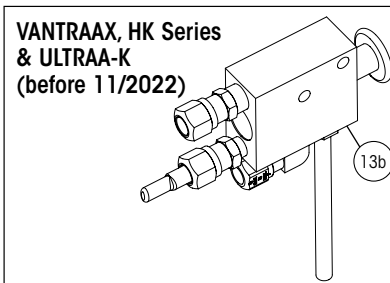
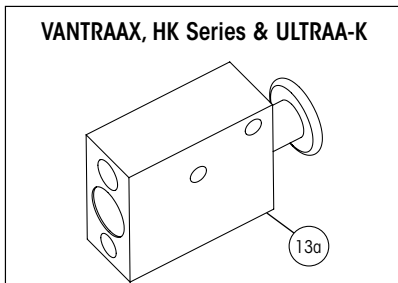
SLIDER PINS



QUIK-DRAW® ACTUATOR ENDS



QUIK-DRAW VALVES



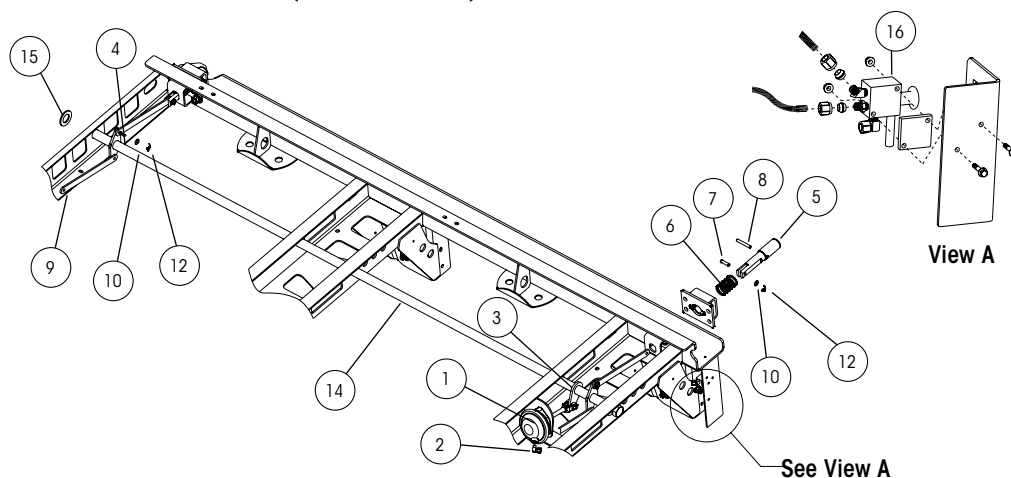


ITEM	DESCRIPTION	PART NO.	QTY.	NOTES
1	FRONT LINEAR ACTUATOR WITH FITTINGS			
	Cast Iron (Units built before Feb. 2015)			
	42" box	S-28061-1	1	Includes one T-fitting
	48" and 54" box	S-28061-2	1	Includes one T-fitting
	Composite (Units built in Feb. 2015 and after)			
	42" box	S-35294-1	1	Includes one T-fitting, clevis pin & hardware
	48" and 54" box	S-35294-2	1	Includes one T-fitting, clevis pin & hardware
	48" box (ULTRAA-K units built after Nov. 2022)	S-35295-2	1	Includes one straight air line fitting, clevis pin & hardware
2	REAR LINEAR ACTUATOR WITH FITTINGS			
	2a Cast Iron (Units built before Feb. 2015)			
	42" box	S-28062-1	1	Includes one straight air line fitting
	48" and 54" box	S-28062-2	1	Includes one straight air line fitting
	2b Composite (Units built in Feb. 2015 and after)			
	42" box	S-35295-1	1	Includes one straight air line fitting, clevis pin & hardware
	48" and 54" box	S-35295-2	1	Includes one straight air line fitting, clevis pin & hardware
3	PIN EXTENSION FOR 54-INCH BOX (Not Shown)	S-32969	4	
4	LOCKING PIN			
	4a Units built before Sept. 2012			
	1.375" diameter pin	S-28290	4	4" (TTMA) and 6" body rail hole spacing
	1.625" diameter pin	S-28289	4	4" body rail hole spacing
	4b Units built in Sept. 2012 and after – 40K and 50K / July 2014 – Other VANTRAAX®			
	1.375" diameter pin	S-32389	4	4" (TTMA) and 6" body rail hole spacing
	1.625" diameter pin	S-32388	4	4" body rail hole spacing
5	LOCKING PIN SPRING			
	5a Units built before Sept. 2012			
	42" box	B-22000	4	3.8" spring
	48" and 54" box	B-28930	4	3.25" spring
	5b Units built in Sept. 2012 and after – 40K and 50K / July 2014 – Other VANTRAAX			
	42", 48" and 54" box with QUIK-DRAW®	B-32500	4	4.5" spring
6	CLEVIS PIN (Not Shown)			
	6a Clevis pin (units built before Sept. 2012)	SA-5200-6	4	3/8" x 1.380"
	6b Clevis pin (units built in Sept. 2012 and after - 40K and 50K / July 2014 - Other VANTRAAX)			
	Cast iron end	SA-5200-8	4	3/8" x 1.50"
	Composite end	SA-5200-10	4	3/8" x 1.813"
7	SLIDER PIN BOLT KIT	S-39880-1	1	Includes 4 - 1.75" shoulder bolts, 4 - 1" shoulder bolts, 8 washers and 4 nuts
8	SPRING PIN (units built before Sept. 2012)	SA-8100-4	4	3/8" x 2.5" roll pin
9	LOCKING PIN WASHER (Not Shown)	SA-1500-2	6	3/8" I.D. flat washer
10	PIN WASHER	A-30641	4	
11	LOCKING COTTER PIN (Not Shown)	A-29557	6	3/32" x 1" cotter pin
12	LOCKING PIN LINK (Not Shown)			
	42" box Manuel Pin Release	S-32967-1	2	
	48" box Manuel Pin Release	S-32967-2	2	
	54" box Manuel Pin Release	S-32967-3	2	
	HKARL Ramp Ready Link Arm	S-34760	4	

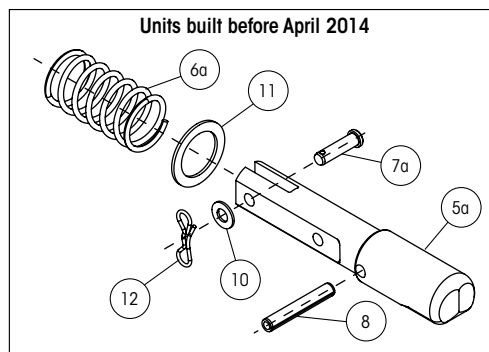
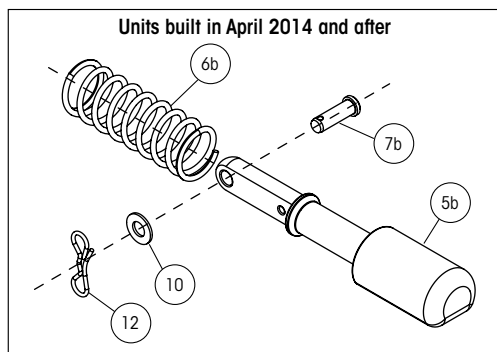


ITEM	DESCRIPTION	PART NO.	QTY.	NOTES
13	QUIK-DRAW VALVE®			
	13a VANTRAAX, HK Series and ULTRAA-K® (units built before Nov. 2022)	VS-25223	1	Valve with integral knob
	13b VANTRAAX, HK Series and ULTRAA-K (units built before Nov. 2022)	VS-25224	1	Valve with integral knob and fittings
	13c ULTRAA-K (units built in Nov. 2022 and after)	VS-41590-1	1	Valve with integral knob and fittings
14	QUIK-DRAW BRACKET HARDWARE	SA-1100-15	2	ULTRAA-K only
		SA-7000-5	2	ULTRAA-K only
15	QUIK-DRAW RETROFIT KIT (Not Shown)			Includes all retrofit components and installation instructions
	42" box	D-25430-2	1	
	48" box	D-25430-8	1	
	54" box	D-25430-4	1	

PLATFORM APPLICATIONS (INTRAAX® SP) — SEE PAGE 1 FOR VAN APPLICATIONS



SLIDER PINS



ITEM	DESCRIPTION	PART NO.	QTY. ¹	NOTES
1	BRAKE CHAMBER ACTUATOR	A-23039	1	Type 12 modified
2	90 DEGREE ELBOW FITTING	SA-4300-19	1	
3	BRAKE CHAMBER ACTUATOR CRANK ARM	S-26964	1	
4	CRANK ARM WELDMENT			
	Manual and customer supplied	B-26934	2	For front and rear of slider box
	Mechanical air assist	B-26934	1	For rear of slider box

1. Quantities may vary depending on model configuration.



ITEM	DESCRIPTION	PART NO.	QTY.	NOTES
5	LOCKING PIN			
	5a Units built before April 2014			
	1.625" diameter pin	S-28289	4	4" body rail hole spacing
	5b Units built in April 2014 and after			
	1.625" diameter pin	S-32388	4	4" body rail hole spacing
6	LOCKING PIN SPRING			
	6a Units built before April 2014			
	42" box	B-22000	4	3.25" spring
	48" and 54" box	B-28930	4	3.8" spring
	6b Units built in April 2014 and after			
	42", 48" and 54" box with QUIK-DRAW®	B-32500	4	4.5" spring
7	CLEVIS PIN			
	7a Units built before April 2014	SA-5200-6	4	3/8" × 1.375"
	7b Units built in April 2014 and after	SA-5200-3	4	3/8" × 1.5"
8	SPRING PIN	SA-8100-4	4	3/8" × 2.5" roll pin
9	LOCKING PIN LINK			
	37" box	S-26961-1	4	
	38" box	S-26961-2	4	
	43" box	S-26961-3	4	
	44" box	S-26961-4	4	
10	LOCKING PIN WASHER (Not Shown)	SA-1500-2	4	3/8" I.D. flat washer
11	PIN WASHER	A-30641	4	1.41" I.D. flat washer
12	LOCKING COTTER PIN	A-29557	8	3/32" × 1" cotter pin
13	OUTER PIN CAGE ASSEMBLY			Includes roadside and curbside pin cage and (8) bolts
	Without shims	S-28658-3	2	Customer uses inner web reinforcements (includes mounting bolt)
	With shims	S-28658-4	2	Customer uses outer web reinforcements (includes mounting bolt)
14	PIPE WELDMENT			Contact Hendrickson for assistance
15	RING STOP	A-21347	1	
16	QUIK-DRAW® VALVE			
	Three-way auto reset valve	VS-25223	1	Valve with integral knob
	Three-way auto reset valve assembly	VS-25224	1	Valve with integral knob and fittings

1. Quantities may vary depending on model configuration.

Actual product performance may vary depending upon vehicle configuration, operation, service and other factors.

All applications must comply with applicable Hendrickson specifications and must be approved by the respective vehicle manufacturer with the vehicle in its original, as-built configuration. Contact Hendrickson for additional details regarding specifications, applications, capacities, operation, service and maintenance instructions.

Call Hendrickson at 866.RIDEAIR (743.3247) for additional information.



www.hendrickson-intl.com

TRAILER COMMERCIAL VEHICLE SYSTEMS
 2070 Industrial Place SE
 Canton, OH 44707-2641 USA
 866.RIDEAIR (743.3247)
 Fax 800.696.4416

Hendrickson Canada ULC
 2825 Argentia Road, Unit #1 - 4
 Mississauga, ON Canada L5N 8G6
 800.668.5360
 905.789.1030 • Fax 905.812.9423

Hendrickson Mexicana
 Circuito El Marqués Sur #29
 Parque Industrial El Marqués
 Pob. El Colorado, Municipio El Marqués,
 Querétaro, México C.P. 76246
 +52 (442) 296.3600 • Fax +52 (442) 296.3601

L751 Rev K 03-25

© 2000 – 2025 Hendrickson USA, L.L.C. All Rights Reserved. All trademarks shown are owned by Hendrickson USA, L.L.C., or one of its affiliates, in one or more countries. Information contained in this literature was accurate at the time of publication. Product changes may have been made after the copyright date that are not reflected.

Printed in United States of America