

Truck Shock Absorbers



Optimized ride quality
Optimized road stability
Optimized durability

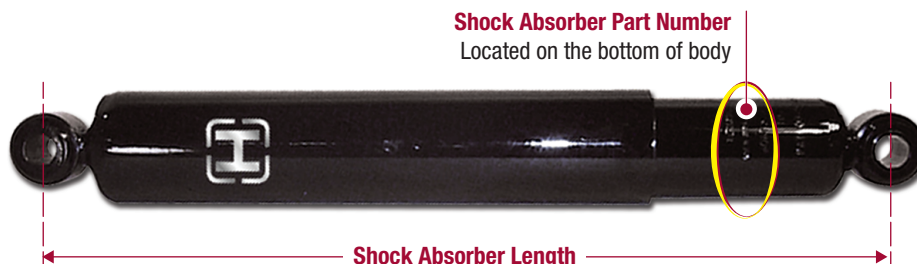
Hendrickson Shock Absorbers are an integral part of our line of truck suspension systems, and are specially designed to:

- Deliver a smoother, more controlled ride with improved comfort, handling, and braking performance
- Precisely engineered with optimized stroke lengths, seal designs, bore diameters, and advanced hydraulic damping to maximize ride quality and stability
- Large-bore shock technology provides superior damping to protect cargo while enhancing overall vehicle control
- Help limit suspension travel to reduce stress on the frame and critical components, extending system durability and service life
- Protect key air suspension components — including air springs and height control valves — by controlling compressed and extended movement
- Improve tire wear, fuel efficiency, and long-term vehicle performance



Protect Your Investment

- Use only **Hendrickson Genuine Parts** to help preserve suspension performance and durability. Non-genuine shock absorbers may not meet Hendrickson specifications, which can reduce performance and potentially damage the suspension and related components
- Regular **inspection** supports consistent performance and long service life
- Shock Absorber **identification** and **length measurement** are critical to ensure correct fit, performance, and suspension durability. See below to accurately identify and measure a shock absorber

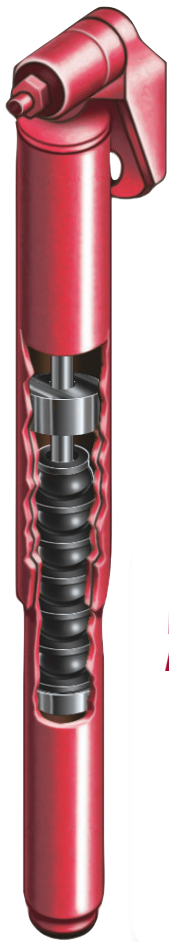


Fully extend the shock absorber to its maximum length.
Measure from the centerline of upper bushing to centerline of lower bushing

HENDRICKSON
GENUINE PARTS

To learn more about Hendrickson Genuine Parts,
call 630.910.2800 or 855.RIDERED (855.743.3733)
or visit www.maaxuptime.com

HENDRICKSON
The World Rides On Us®



When new, HI-TORQUE shock absorbers cannot be manually extended

• HI-TORQUE™ Shock Absorbers

Applicable to HAS™ Heavy-duty Rear Air Suspension System only

Hendrickson HI-TORQUE shock absorbers, in combination with a height control valve, form Hendrickson's **EDGE™** system to help maintain **Efficient Driveline GEometry** in high-torque engine applications.

HI-TORQUE shock absorbers use an exclusive internal rebound spring to control rapid shock extension during acceleration. This design significantly reduces torque-induced frame rise, helping to protect driveline components, reduce vibration, and minimize wheel hop in high-torque applications.

HI-TORQUE shocks provide increased carrying capacity and longer life, and they function as traditional shock absorbers to deliver a smooth, high quality ride.

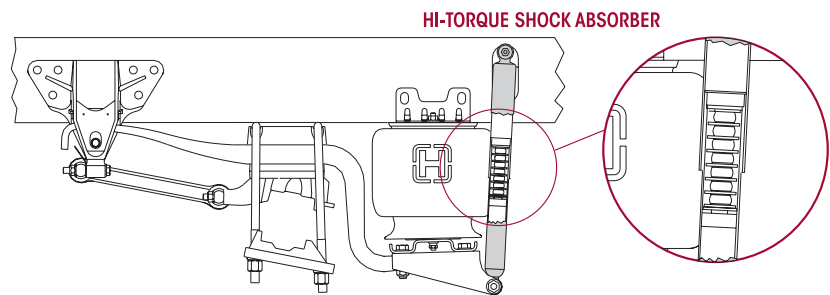
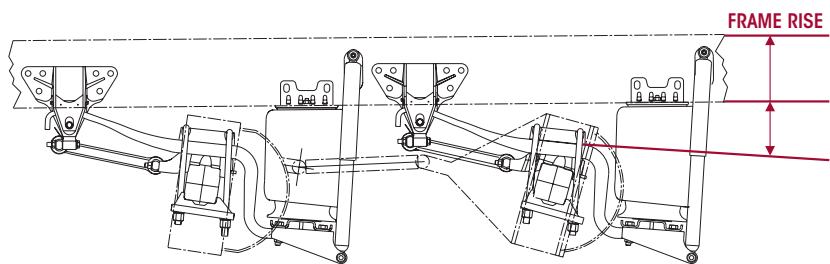
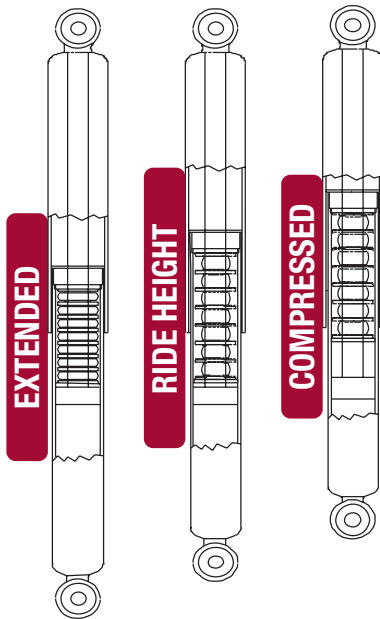
HI-TORQUE Shock Absorber Installation



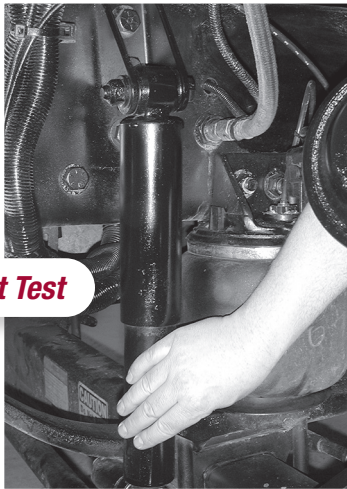
REPLACING A HI-TORQUE SHOCK ABSORBER WITH A NON-HI-TORQUE SHOCK WILL RESULT IN PREMATURE WEAR AND MAY ADVERSELY AFFECT DRIVELINE AND SUSPENSION COMPONENTS.

It is not necessary to replace shock absorbers in pairs if one (1) shock absorber requires replacement.

- Before installing or removing a HI-TORQUE shock absorber, release all air pressure from the air springs and apply hand force to compress the internal rebound spring
- During replacement, a new HI-TORQUE shock may appear too short; this is normal, as human force cannot extend the shock against the internal spring when the suspension is at ride height
- Follow the applicable Hendrickson Technical Procedure for shock absorber disassembly and assembly for your specific suspension



• Heat Test, Physical and Visual Inspection



Heat Test

Shock Absorber Heat Test and Physical Inspection

1. **Heat Test:** Drive the vehicle at moderate speeds on a rough road for minimum of fifteen (15) minutes.



WARNING

DO NOT GRAB THE SHOCK ABSORBER AS IT COULD POSSIBLY BE HOT AND CAUSE PERSONAL INJURY.

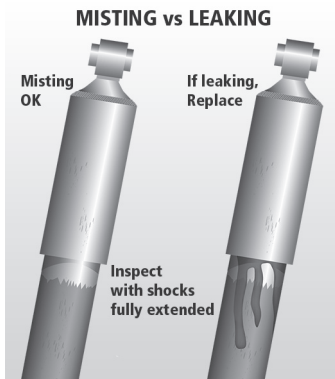
2. Lightly touch the shock absorber body carefully below the dust cover.
3. Touch the frame to get an ambient reference. A warm shock absorber is acceptable, a cold shock absorber should be replaced.
4. **Physical Inspection:** To inspect for an internal failure, remove and shake the shock absorber. Any rattling of metal parts indicates internal damage and requires replacement.

Shock Absorber Visual Inspection

Misting vs. Leaking

Inspect only when the shock absorber is dry. Water from wet weather driving or vehicle washing may be misinterpreted as leakage.

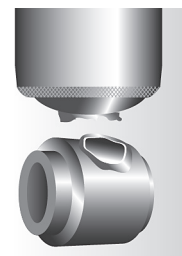
- **Misting:** Misting is not a leak. It is a normal function in which small amounts of fluid evaporate at high temperatures, lubricating the seal and forming a light film on the shock body.
- **Leaking:** A true leak is indicated by visible fluid streams from the upper seal, typically seen below the dust cover. A leaking shock absorber must be replaced.



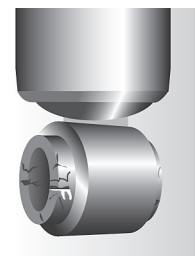
Unacceptable Conditions

Visually inspect the shock absorbers for these potential problems in a fully extended condition. Replace as necessary.

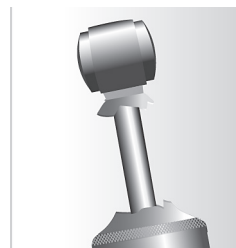
These images show a general representation of an unacceptable shock absorber. Refer to your specific model's inspection guidelines for more details.



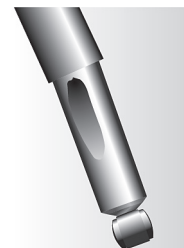
Damaged upper or lower mount



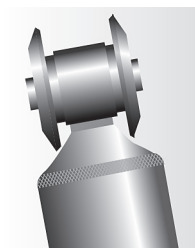
Damaged upper or lower bushing



Damaged dust cover and / or shock body



Bent or dented shock absorber



Improper installation (Example: washer installed backwards)

• Popular Hendrickson Shock Absorbers

Below are our most popular shock absorbers for truck suspension applications. For additional details on shock absorbers applicable to your suspension, refer to Hendrickson Parts Lists online at www.hendrickson-intl.com or contact Hendrickson Truck Parts Specialist at truckparts@hendrickson-intl.com

PART NO.	DESCRIPTION
AIRTEK® • SOFTEK® Suspension Systems	
58913-003L	Freightliner/Western Star, Prior to 2010
58913-009L	Blue Bird 8K/10K • Lion Bus • Spartan Tiffin • XOS
58913-010L	Blue Bird 13.2K/14.6K • Lion E Truck
58913-011L	Blue Bird 14.6K, Hoist Lift Truck
58913-012L	Freightliner/Western Star, After 2010
64838-002L	Volvo • Mack, built with STEERTEK
64838-003L	Volvo • Mack, built with STEERTEK NXT
65992-001L	International Truck, Sleeper
65992-006L	IC Bus
AIRTEK® NXT Suspension Systems	
58913-015L	Freightliner
AR2™ Suspensions	
60665-012L	40K • 46K
60665-020L	Manitowoc
COMFORT AIR® Suspensions	
60670-006L	Thomas Built
60670-013L	Hino 19K • 21K
60670-029L	Hino 19K
60670-030L	Hino 21K, Lion Electric Truck
60670-031L	Hino 23K
60998-003L	Blue Bird
79333-001L	Arboc
HAS™ Suspensions	
60665-004L	15K • 21K • 23K Blue Bird, Low Profile
60670-003L	15K Low Profile
60670-005L	19K • 21K • 23K • 36K • 40K • 46K
60670-006L	21K • 23K • 40K • 40K LH • 46K
60670-007L	40K • 46K, Inboard Standard

PART NO.	DESCRIPTION
HAS™ Suspensions	
60670-008L	19K • 21K • 23K • 40K • 46K • Nissan, Low Profile, Inboard Rear
60670-010L	12K • 21K
60670-011L	Ford, 8.8" Ride Height
60670-012L	Ford, 7.8", 9.6" Ride Height
60675-002L	21K • 40K • 46K
60675-003L	19K • 21K • 23K
60675-005L	19K • 21K • 23K
60675-006L	40K • 46K, Inboard
60675-009L	Volvo • Mack
60675-016L	21K • 40K • 46K, Kenworth
60675-017L	19K • 21K • 23K
60680-001L	40LH
60680-002L	40LH
60685-001L	40LH
HAULMAAX® EX • HAULMAAX® Suspensions	
60680-004L	16½" Saddle Height
60680-005L	17½"-18½" Saddle Height
60680-006L	16½" Saddle Height, Mack
60680-010L	20¼"-20½" Saddle Height
60680-012L	20¼" Saddle Height
HN® Suspensions	
60680-003L	40K • 46K • 52K
HTB™ Suspensions	
60657-008L	International Truck - 9000 Series
60657-010L	International Truck - ProStar
60657-011L	International Truck - ProStar Day Cab
66153-005L	Spartan

PART NO.	DESCRIPTION
HTS™ Suspensions	
60665-025L	Autocar • Lion Bus • XOS
OPTIMAAX® Suspensions	
80335-001L	OPTIMAAX
PARASTEER™ • PARASTEER™ HD Suspensions	
60998-002L	Blue Bird
PRIMAAX® EX • FIREMAAX® EX Suspensions	
60657-003L	8½", 10" Ride Height
60657-005L	Kenworth Tridem
60657-007L	Volvo
60657-017L	Kenworth
60665-011L	12½"-14¾"-15½" Ride Height
60665-013L	8½", 10" Ride Height, Drum Brake
60665-014L	Spartan RV • Disc Brake
60665-015L	8½", 10" Ride Height, Disc Brake
60665-017L	Kenworth
60665-018L	Drum Brake
70807-001L	Heavy-duty
70807-002L	Heavy-duty
ROADMAAX® Suspensions	
70807-007L	E-One • Ferrara • Pierce • Rosenbauer Spartan • Sutphen
STEERTEK™ NXT High Capacity Steer Axle	
80606-001L	Ferrara, KME, Rosenbauer, Sutphen
ULTIMAAX® Suspensions	
60680-015L	9½", 10½" Ride Height
60680-016L	10½", 11½" Ride Height

Part numbers with the **60675** and **60685** prefix (shown in red) indicate HI-TORQUE shock absorbers.

These products are covered by at least one or more U.S. and / or foreign patents and / or pending U.S. and / or foreign patent applications. See Hendrickson for details.

Actual product performance may vary depending upon vehicle configuration, operation, service and other factors.

All applications must comply with applicable Hendrickson specifications and must be approved by the respective vehicle manufacturer with the vehicle in its original, as-built configuration.

Contact Hendrickson for additional details regarding specifications, applications, capacities, operation, service and maintenance instructions.

Call Hendrickson at 630.910.2800 or 855.RIDERED (743.3733) for additional information.



TRUCK COMMERCIAL VEHICLE SYSTEMS
 800 South Frontage Road
 Woodridge, IL 60517-4904 USA
 855.RIDERED (743.3733)
 630.910.2800 • Fax 630.910.2899

www.hendrickson-intl.com

45745-193 Rev G 05-26

© 2002 – 2026 Hendrickson USA, L.L.C. All Rights Reserved. All trademarks shown are owned by Hendrickson USA, L.L.C., or one of its affiliates, in one or more countries. Information contained in this literature was accurate at the time of publication. Product changes may have been made after the copyright date that are not reflected. Printed in United States of America