

H PARTS LIST

STEERTEK™ NXT High-capacity Steer Axle and Suspension System for Pierce Fire/Rescue Vehicles

LIT NO: SP-338

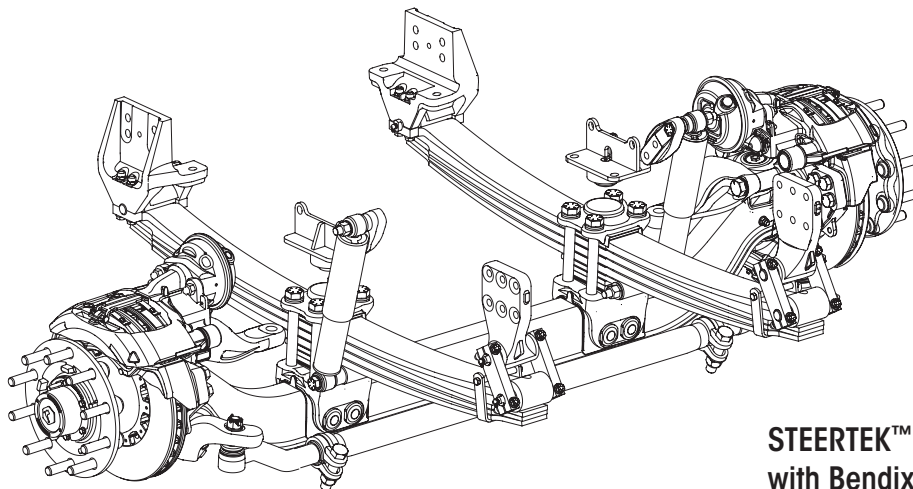
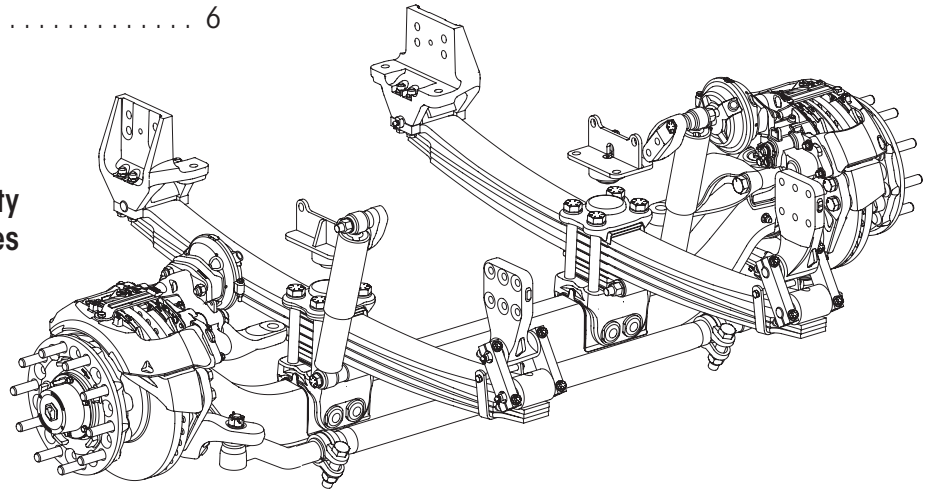
DATE: April 2026

REVISION: C

CONTENTS

DESCRIPTION	PAGE
Parts Lists	
■ Suspension • Axle • Clamp Group Assembly . . .	2
■ Wheel End Assembly with Air Disc Brakes	4
Selection Guides	5
Special Tools	6

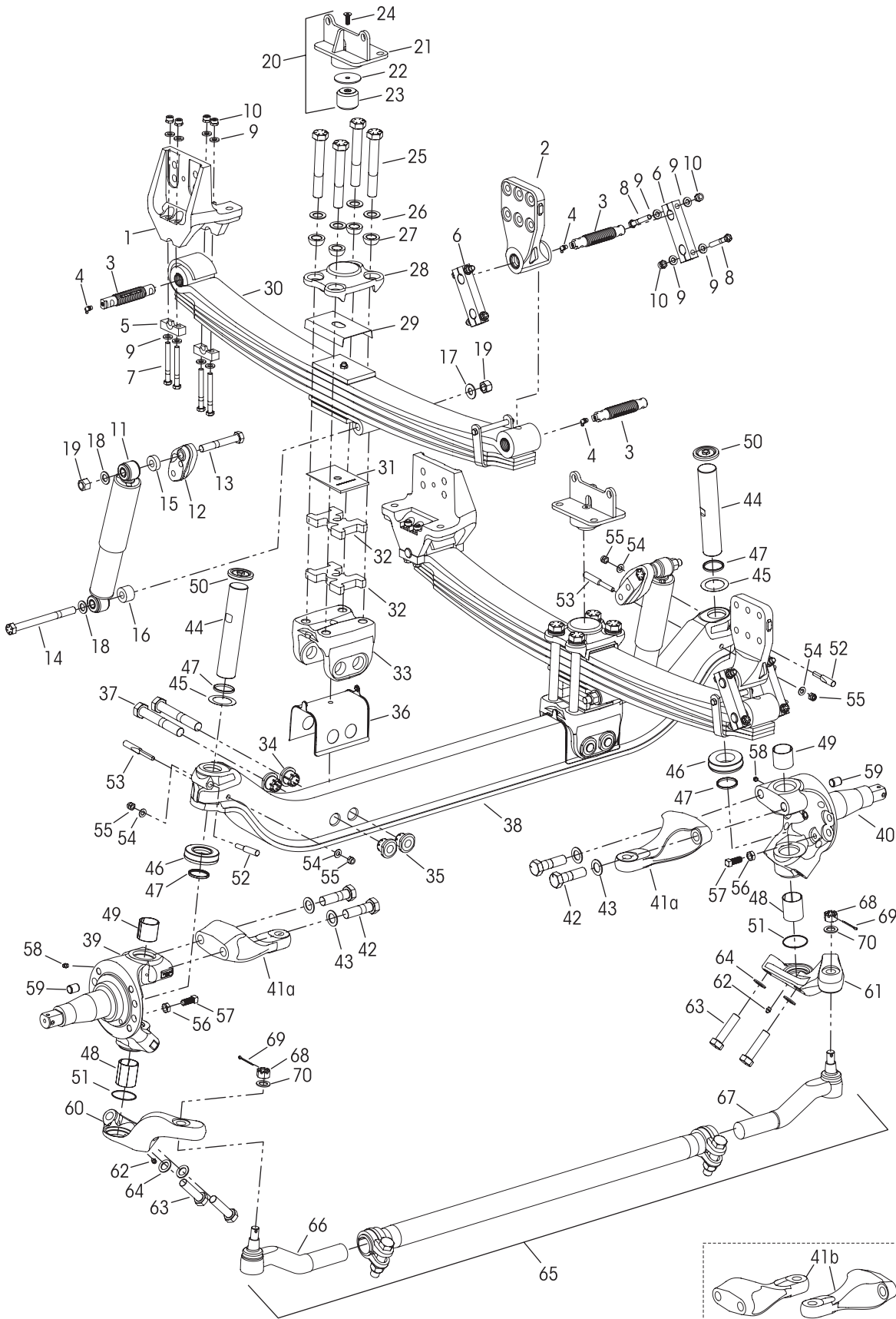
**STEERTEK™ NXT High Capacity
with Meritor Air Disc Brakes**



**STEERTEK™ NXT High Capacity
with Bendix Air Disc Brakes**

Suspension • Clamp Group • Axle Assembly

18,000 to 24,000 Pound Capacity





STEERTEK™ NXT High-capacity Steer Axle for Pierce Fire / Rescue Vehicles

KEY NO.	PART NO.	DESCRIPTION	VEHICLE QTY.	KEY NO.	PART NO.	DESCRIPTION	VEHICLE QTY.
1	79894-003	Frame Hanger Assembly Front	2	36	78887-001	Axle Seat Liner	2
2	80159-006	Rear with Bushing	2	37		*1"-8 UNC x 6½" Hex Thru Bolt	4
		Frame Hanger Fastener Service Kit, One Side		38	94305-XXX	STEERTEK NXT Axle Fire and Rescue, Includes Key Nos. 39-70, See Table 2 on Page 5	1
	34013-247	Front, Includes Key Nos. 5, 7, 9-10				Knuckle Assembly, Includes Key Nos. 47, 56-59 See Table 2 on Page 5	2
	34013-248	Rear, Includes Key Nos. 3-4, 6, 8-10		39	77243-XXX	Left Hand	1
	34013-249	Single Threaded Pin and Grease Zerk Service Kit, Includes Key Nos. 3-4		40	77243-XXX	Right Hand	1
3		*Threaded Pin	6	41		Steering Arm, See Table 2 on Page 5	
4		*Grease Zerk	6	a	79685-XXX	Standard 10" Frame	
5	79843-000	Front Hanger Bottom Cap	4	b	77337-XXX	Enforcer 13" Frame	
6	79888-001	Rear Shackles	4	42	30550-040	1"-14 UNF x 3¼" Hex Bolt, Replaces 30550-027	4
7	80362-001	½"-20 UNC x 4½" Hex Bolt	8	43	22962-051	1" Flat Washer	4
8	80362-002	½"-20 UNC x 3¼" Shackle Hex Bolt	8		34013-230	Kingpin Service Kit, One Side Includes Key Nos. 44, 45a, 46-55, 63-64	
9	22962-014	½" Flat Washer	32	44		*Kingpin	2
10	17700-034	½"-20 UNC Locknut	16	45		Kingpin Shim (As needed for service)	2
11	80606-001L	Shock Absorber	2	a	77241-002	0.01" Thickness	
12	78250-002	Shock Bracket	2	b	77241-003	0.02" Thickness	
13	50764-008	¾"-10 UNC x 5" Upper Shock Hex Bolt	2	46	75918-001	Thrust Bearing	2
14	50764-014	¾"-10 UNC x 8½" Lower Shock Hex Bolt	2	47	75966-001	Kingpin Seal	4
		Shock Spacer				Kingpin Bushing	
15	59946-006	Upper, 13.2 mm Thick	2	48	75919-001	Lower, 2½" Length	2
16	59946-015	Lower Outboard, 28 mm Thick	2	49	75919-002	Upper, 2" Length	2
17	59946-005	Lower Inboard, 3 mm Thick	2	50	77209-001	Grease Cap	2
18	22962-001	¾" Flat Washer	4	51	68303-004	O-Ring	2
19	49842-000	¾"-10 UNC Locknut	4			Kingpin Draw Key	
20	79854-000	Jounce Stop Assembly, Includes Key Nos. 21-24	2	52	75925-001	Upper, 3¾" Length	2
21		*Jounce Stop	2	53	75925-002	Lower, 4¾" Length	2
22		*Spacer	2	54	22962-054	7/16" Flat Washer	4
	34013-505	Jounce Stop Service Kit, One Side, Includes Key Nos. 23-24		55	17700-008	7/16"-14 UNC-2B Nut	4
23		*Rubber Bump Stop	2	56	17491-023	5/8"-11 UNC-2B Jam Nut	2
24		*M10 x 1.5 x 30 mm Flat Socket Cap Screw	2	57	93334-001	5/8"-11 UNC x 1½" Set Screw	2
	94307-XXX	Leaf Spring & Clamp Group Assembly, Includes Key Nos. 25-37, See Table 1 on Page 5	2	58	33117-000	Grease Zerk	2
	34013-XXX	Clamp Group Service Kit, One Side, Includes Key Nos. 25-27 & 29, See Table 1 on Page 5		59	64246-000	ABS Sensor Sleeve	2
25	64107-XXX	1"-8 UNC Hex Bolt, See Table 1 on Page 5	8		77244-XXX	Tie Rod Arm Assembly, Includes Key No. 62 See Table 2 on Page 5	
26	22962-051	1" Flat Washer (if equipped) See Table 1 on Page 5	8	60		Left Hand	1
27	78356-002	1" Spherical Washer	8	61		Right Hand	1
28	78888-000	Top Pad	2	62	33117-000	Grease Zerk	2
29	79273-001	Spring Liner	2	63	30418-015	7/8"-14 UNF x 3¼" Hex Bolt, Replaces 30418-014	4
30	82378-XXX	Leaf Spring Assembly, See Table 1 on Page 5	2	64	22962-002	7/8" Flat Washer	4
31	80143-001	Caster Wedge - 2°	2	65	79365-001	Tie Rod Assembly, 20K Drop, Includes Key Nos. 66-68	1
32		Leaf Spring Spacer (if equipped) See Table 1 on Page 5	4			Tie Rod End Service Kits,	
33	77232-000	Axle Seat	2		60961-884	Axle Set, Includes Kit Nos. 60961-882 and -883	
	34013-229	Axle Clamp Collar Service Kit, One Side Includes Key Nos. 34-37			60961-882	Left Hand, Includes Key Nos. 66, 68-70	
		*Axle Collar			60961-883	Right Hand, Includes Key Nos. 67-70	
34		Non Threaded (Bolt Side)	4			*Tie Rod End, Includes Key No. 68	
35		Threaded (Tie Rod Side)	4	66		Left Hand	1
				67		Right Hand	1
				68		*7/8"-14 UNF-2A Castle Nut	2
				69		*Cotter Pin	2
				70		*7/8" Flat Washer	2

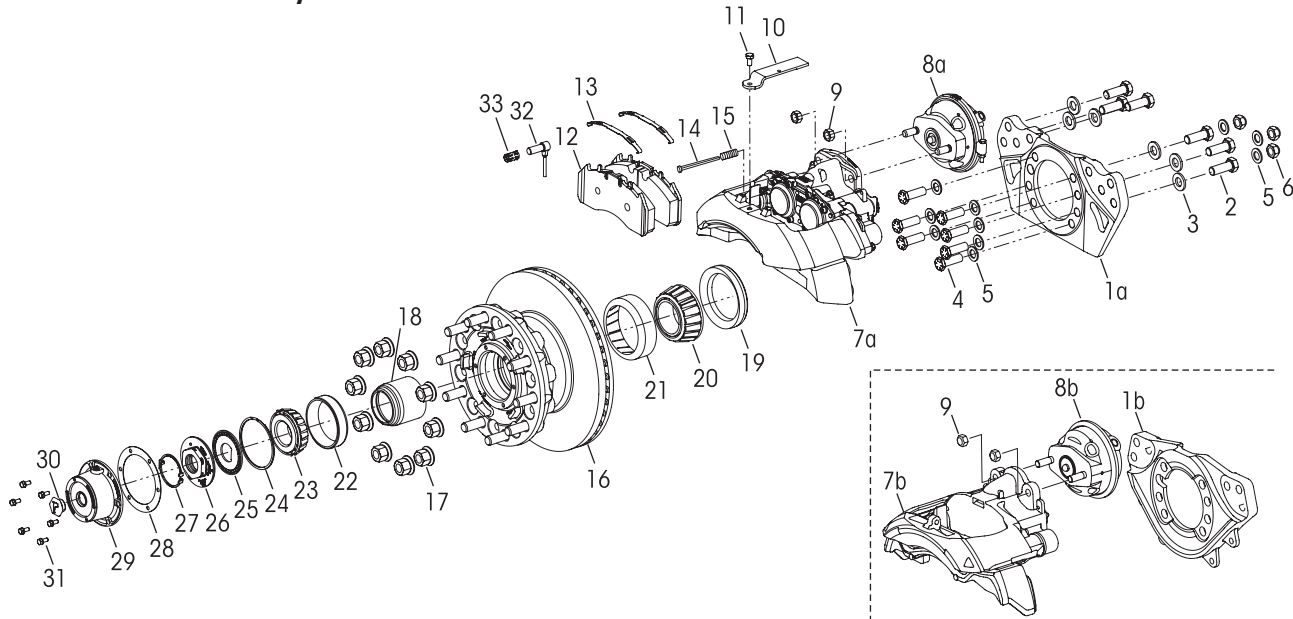
NOTE: * Item included in kit/assembly only, part not sold separately.

** These components are installed by Hendrickson for new production assembly but not supplied for aftermarket service purposes. Description and part number listed for reference only. For more information and assistance with service, maintenance and rebuild instructions on these components see below component manufacturers:

- **Bendix** 1-800-AIR-BRAKE or www.bendix.com/en/services-and-support/b2bendix-quick-links (parts) and www.bendix.com/en/services-and-support/brake-school (technical support training)
- **ConMet** 800.547.9473 or www.conmet.com
- **DRiV Incorporated** 800.325.8886 or www.drivparts.com
- **Meritor** 888.725.9355, or www.meritorpartsexpress.com (parts), www.meritorbullpen.com (technical support)
- **WABCO-ZF Friedrichshafen** 855.228.3203 or www.wabco-customercentre.com



Wheel End Assembly with Air Disc Brakes



KEY NO.	PART NO.	DESCRIPTION	VEHICLE QTY.
1 a		**Meritor Torque Plate Assembly Left Hand, Part No. 3215-F-1878	1
		Right Hand, Part No. 3215-E-1877	1
b		**Bendix Torque Plate Assembly Left Hand, Part No. K138452	1
		Right Hand, Part No. K138451	1
2		M20 Hex Head Bolt	12
	69781-002	55 mm, Use with 1a	
	SA-13200-2	60 mm, Use with 1b	
3		M20 Flat Washer	12
	58246-018	Use with 1a, Replaces 58246-039	
	58246-007	Use with 1b	
4	80345-004	3/4"-16 UNC x 2 1/4" Low Profile Hex Head Bolt	14
5	22962-001	3/4" Flat Washer	20
6	80691-001	3/4"-16 UNC Hex Locknut	6
7 a		**Meritor Caliper Assembly, Includes Key Nos. 10-11, 14-15 Left Hand, Part No. EX225H202XX000S	1
		Right Hand, Part No. EX225H201XX000S	1
b		**Bendix Caliper w/Reduced Copper Pad and Carrier Assembly Left Hand, Part No. K288289	1
		Right Hand, Part No. K288288	1
		Brake Carrier Kit No. K051853	
		Guide Pin and Seal Kit No. 803114	
8 a		**WABCO Air Brake Chamber MGM T24L, Includes K80131-001 Key No. 9 Left Hand, Part No. 423 506 1340	1
		Right Hand, Part No. 423 506 1350	1
b		**Bendix Air Brake Chamber T24 Left Hand, Part No. K152688	1
		Right Hand, Part No. K152689	1
9		**Hex Nut	4
		**Meritor Disc Brake Pad Retainer Kit No. 225281, Includes Key Nos. 10-11	
		**Meritor Disc Brake Pad Kit No. 2252H2CG, Includes Key Nos 12-13	
		**Meritor Wear Indicator Kit No. 225224, Includes Key Nos. 14-15	
		**Bendix Disc Brake Pad Kit No. K129276, Includes Key Nos 10-14	

KEY NO.	PART NO.	DESCRIPTION	VEHICLE QTY.
10		**Pad Retainer	
11		**Pad Retainer Bolt	
12		**Air Disc Brake Pad	
13		**ADB Pad Spring	
14		**Wear Indicator	
15		**Wear Indicator Spring	
16		**ConMet Hub and Rotor Assembly, Includes Bearings and Seals Part No. 10083224 Part No. 10087600	2
		**ConMet Brake Rotor Replacement Kit No. 10082181, One Wheel End, Includes Rotor and 10 of each Cap Screws and Washers	
17		**M22 x 1.5 Two-piece Wheel Nut	20
		**ConMet Hub Bearing Rebuild Kit No. 10081728, One Wheel End, Includes Key Nos. 18-23	
		**ConMet Wheel Seal Kit No. 10081519, One Wheel End, Includes Key Nos. 18-19	
18		**Bearing Spacer Part No. 10034342	
19	10080435	**Wheel Seal Part No. 10045883	
20		**Inner Bearing Cone Part No. 10041922	
21		**Inner Bearing Cup Part No. 10041921	
22		**Outer Bearing Cup Part No. 10041923	
23		**Outer Bearing Cone Part No. 10041924	
		**ConMet Preset Plus FL Nut Assembly Kit No. 10036550, Includes Key Nos. 24-27	
24		**Snap Ring - Double Wind Part No. 10033288	
25		**Spindle Nut Lockwasher Part No. 10031171	
26		**Outer Spindle Nut Part No. 10031170	
27		**Snap Ring Retainer Part No. 10031172	
28		**DRiV Hub Cap Gasket Part No. G-3009	2
29		**DRiV Hub Cap Part No. 343-009, Includes Key No. 30	2
30		**Rubber Plug	
31	64545-002	5/16"-18 UNC x 3/4" Hex Bolt with Retained Washer	12
32		**WABCO ABS Sensor Part No. 441-032-900-0	2
33	64550-000	ABS Sensor Clip	2



■ Selection Guides

TABLE 1 Leaf Spring Assembly and Components

Capacity (lb)	Ride Height (in)	Leaf Spring and Clamp Group Assembly	Clamp Group Service Kit	Leaf Spring Assembly Key No. 30	1" Hex Bolt Key No. 25		1" Flat Washer Key No. 26 <i>(Use only as specified)</i>	Leaf Spring Spacer Key No. 32		
					Part No.	Length (in)		Part No.	Part No.	Qty
18K	8	94307-004	34013-228	82378-260	7	64107-002	22962-051	N/A		
	9	94307-001	34013-419	82378-250	8	64107-001				
	9.5	94307-002	34013-420	82378-251	8.5	64107-006				
	10	94307-003	34013-256	82378-250	9	64107-003				
20K	8	94307-104	34013-228	82378-310	7	64107-002	22962-051	N/A		
	9	94307-101	34013-419	82379-300	8	64107-001				
	9.5	94307-102	34013-420	82379-301	8.5	64107-006				
	10	94307-103	34013-256	82379-300	9	64107-003				
24K	8	94307-204	34013-228	82380-410	7	64107-002	-	N/A		
	9	94307-201	34013-397	82380-300	8	64107-001				
	9.5	94307-202	34013-279	82380-301	8.5	64107-006				
	10	94307-203	34013-312	82380-300	9	64107-003				



WARNING

USE 1" FLAT WASHERS (PART NO. 22962-051) ONLY AS SPECIFIED IN TABLE 1 (LEAF SPRING ASSEMBLY AND COMPONENTS). THE TABLE LISTS DIFFERENT CONFIGURATIONS FOR THIS ASSEMBLY. IN CERTAIN CONFIGURATIONS, THE CLAMP GROUP REQUIRES THE USE OF 1" FLAT WASHERS (PART NO. 22962-051) WITH THE SPECIFIED 1" HEX BOLT LENGTH, BUT NOT IN OTHER CONFIGURATIONS. IMPROPER CLAMP FORCE IN THE LEAF SPRING AND CLAMP GROUP ASSEMBLY, IMPROPER SEATING AND COMPONENT DAMAGE CAN CAUSE LOSS OF VEHICLE CONTROL, POSSIBLE PERSONAL INJURY, DEATH, OR PROPERTY DAMAGE.

TABLE 2 Axle, Knuckle and Tie Rod Arm and Steering Arm Assembly

Chassis	Capacity (lb)	Wheelbase (in)	STEERTEK NXT Axle Assembly Key No. 38	Tie Rod Arm Assembly Part No.		Knuckle Assembly Part No.		Steering Arm Assembly Part No.	
				Left Hand Key No. 60	Right Hand Key No. 61	Left Hand Key No. 39	Right Hand Key No. 40	Left Hand Key No. 41	Right Hand Key No. 41
Standard 10" Frame	18K	130-170	94305-001	77244-057	77244-058	77243-001	77243-102	79685-001	N/A
	24K		94305-002				77243-002		79685-001
	18K	171-200	94305-003	77244-059	77244-060	77243-001	77243-102	79685-001	N/A
	24K		94305-004				77243-002		79685-001
	18K	201-230	94305-005	77244-061	77244-062	77243-001	77243-102	79685-001	N/A
	24K		94305-006				77243-002		79685-001
	18K	231-270	94305-007	77244-063	77244-064	77243-001	77243-102	79685-001	N/A
	24K		94305-008				77243-002		79685-001
Enforcer 13" Frame	18K	130-170	94305-011	77244-057	77244-058	77243-001	77243-102	77337-001	N/A
	24K		94305-012				77243-002		77337-001
	18K	171-200	94305-013	77244-059	77244-060	77243-001	77243-102	77337-001	N/A
	24K		94305-014				77243-002		77337-001
	18K	201-230	94305-015	77244-061	77244-062	77243-001	77243-102	77337-001	N/A
	24K		94305-016				77243-002		77337-001
	18K	231-270	94305-017	77244-063	77244-064	77243-001	77243-102	77337-001	N/A
	24K		94305-018				77243-002		77337-001



Special Tools

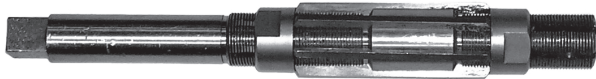
NOTE: Hendrickson does not supply these tools. Contact tool manufacturer.

KINGPIN BUSHING TOOLS

ADJUSTABLE STRAIGHT FLUTE REAMER

2.00" to 2.01" Cutting Diameter

McMaster-Carr #3141A28



OR

PRECISION-FINISH CYLINDER HONE

1.75" to 2.75" Cylinder ID

McMaster-Carr #7362A45



EXTENSION PILOT TOOL

for 1.78" to 2.09" Adjustable Reamer

McMaster-Carr #3004A32



STEERING STOP BOLT JAM NUT TOOL

DUAL OPEN-END WRENCH

1 5/16" - 60°/15° Angle Wrench

Martin Tools #3719



This is a general parts list to provide directional information. Components may vary by model. Questions in regards to parts, contact Hendrickson Truck Parts at 855.743.3733 (Toll-free U.S. and Canada), 630.910.2800 (Outside U.S. and Canada) or email: truckparts@hendrickson-intl.com.

Actual product performance may vary depending upon vehicle configuration, operation, service and other factors.

All applications must comply with applicable Hendrickson specifications and must be approved by the respective vehicle manufacturer with the vehicle in its original, as-built configuration. Contact Hendrickson for additional details regarding specifications, applications, capacities, and operation, service and maintenance instructions.

Call Hendrickson at **630.910.2800** or **855.RIDERED (855.743.3733)** for additional information.



www.hendrickson-intl.com

TRUCK COMMERCIAL VEHICLE SYSTEMS
 800 South Frontage Road
 Woodridge, IL 60517-4904 USA
 855.743.3733 (Toll-free U.S. and Canada)
 630.910.2800 (Outside U.S. and Canada)
 Fax 630.910.2899

SP-338 Rev C 04-26

© 2022 – 2026 Hendrickson USA, L.L.C. All Rights Reserved. All trademarks shown are owned by Hendrickson USA, L.L.C., or one of the affiliates, in one or more countries.

Information contained in this literature was accurate at the time of publication. Product changes may have been made after the copyright date that are not reflected.

Printed in United States of America