

PARTS LIST

INTRAX[®] SP Platform Slider
AAZNT 23K / AAZNT 46K /
AAZNT 69K23

LIT NO: L916

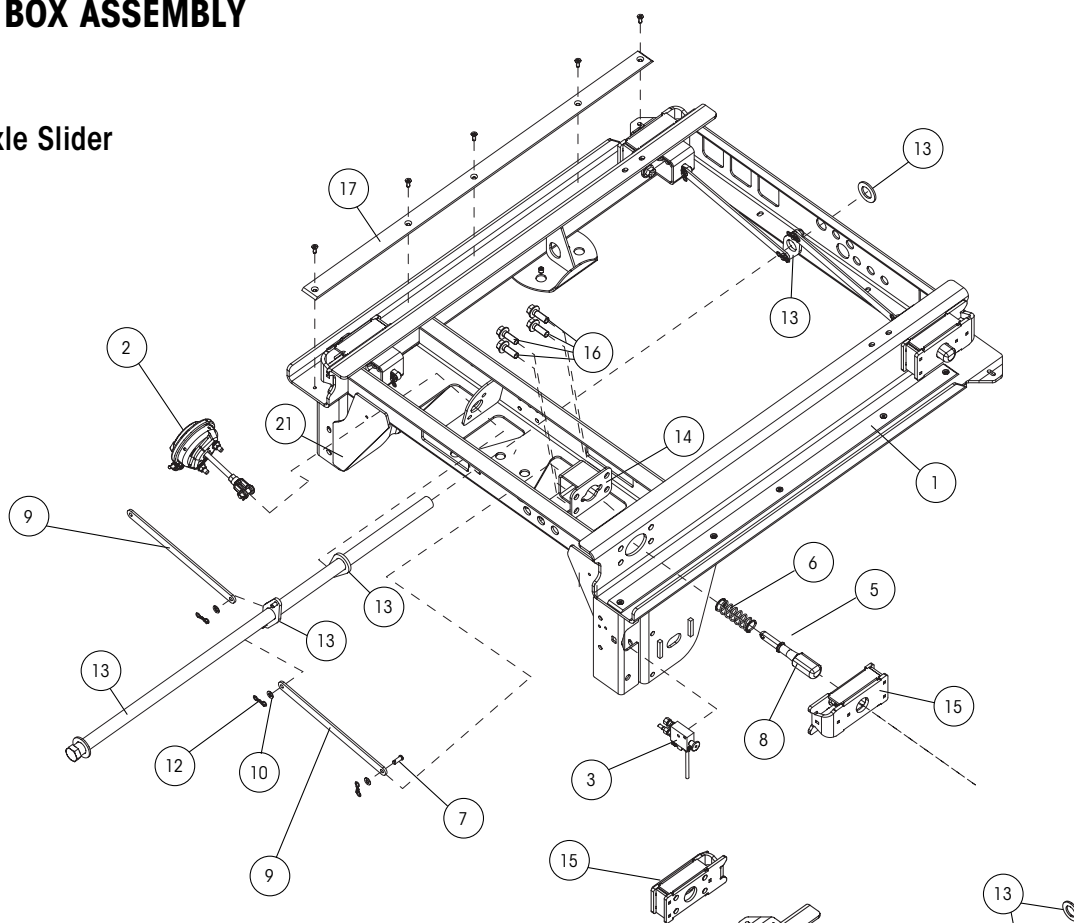
DATE: June 2024

REVISION: G

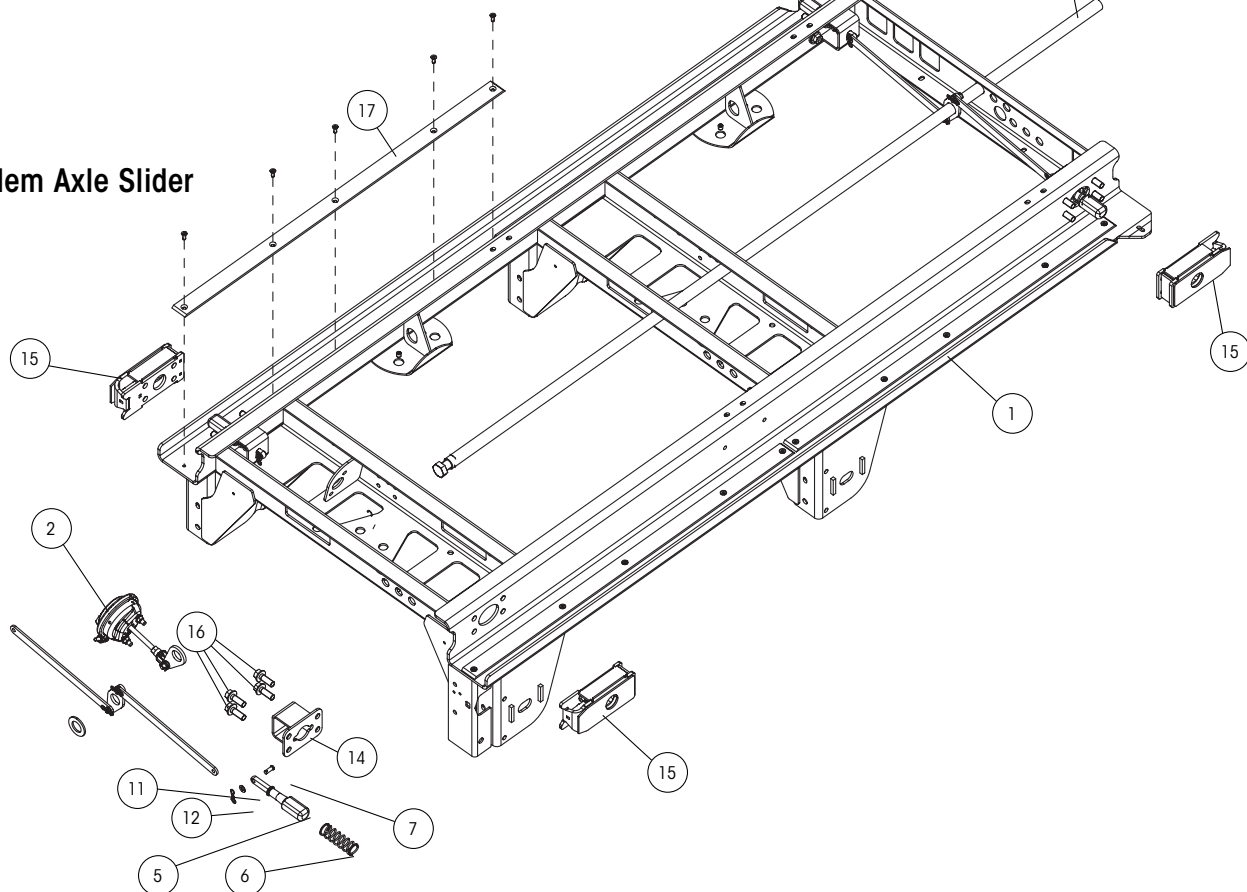


SLIDER BOX ASSEMBLY

Single Axle Slider



Tandem Axle Slider





SLIDER BOX ASSEMBLY

All suspensions are 23K capacity; system capacity for tandem is 46K; system capacity for tridem is 69K.

I-beam centers are 37" and 38" for 42" box width with 71.5" axle track.

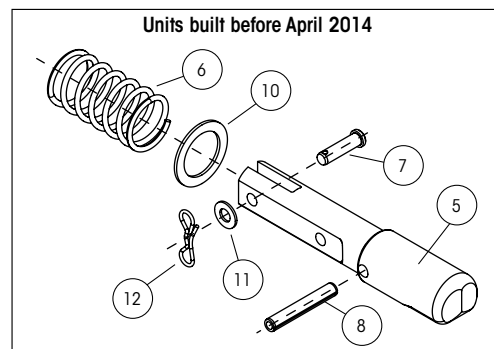
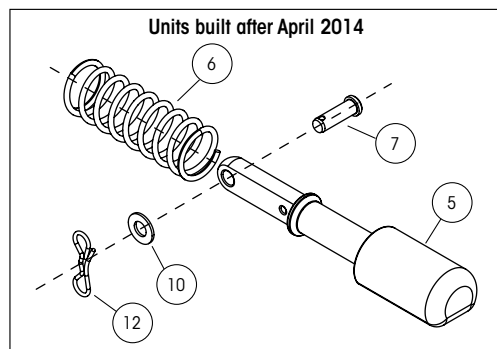
I-beam centers are 43" and 44" for 48" box width with 77" axle track.

Axle spacing or "spread" is measured from center of front axle to center of rear axle.

ITEM	DESCRIPTION	PART NO.	TANDEM SYSTEM QTY.	NOTE
1	AFTERMARKET SLIDER BOX REPLACEMENT	AMBOX.XX	1	Please contact Hendrickson for assistance
2	BRAKE CHAMBER	A-23039	1	Type 12 modified
3	QUIK-DRAW® VALVE			See L751 QUIK-DRAW Parts List
4	QUIK-DRAW VALVE KNOB with SCREW SET (Not shown)			See L751 QUIK-DRAW Parts List
5	LOCKING PIN			See L751 QUIK-DRAW Parts List
6	LOCKING PIN SPRING			See L751 QUIK-DRAW Parts List
7	CLEVIS PIN			See L751 QUIK-DRAW Parts List
8	SPRING PIN			See L751 QUIK-DRAW Parts List
9	LOCKING PIN LINK			See L751 QUIK-DRAW Parts List
10	LOCKING PIN WASHER			See L751 QUIK-DRAW Parts List
11	PIN WASHER			See L751 QUIK-DRAW Parts List
12	LOCKING PIN LINK COTTER PIN			See L751 QUIK-DRAW Parts List
13	PIPE WELDMENT KIT			Includes pipe weldment, crank weldment, crank arm actuator and pipe ring stop
	Single axle	S-28044-1	1	51" weldment
	Tandem, 49" axle spread	S-28044-2	1	99" weldment
	Tandem, 60" axle spread	S-28044-3	1	111" weldment
	Tandem, 72" axle spread	S-28044-4	1	123" weldment
14	INNER LOCK PIN CAGE ASSEMBLY	S-27000	4	Units built before April 2014
		S-34055	4	Units built April 2014 and after
15	OUTER LOCK PIN CAGE REPLACEMENT KITS			
	No shims, per slider	S-28658-1	1	Includes (4) pin cages and bolts
	With outer shims, per slider	S-28658-2	1	Includes (4) pin cages and bolts
	No shims	S-28658-3	2	Includes (1) curbside and (1) roadside cage and bolts
	With outer shims	S-28658-4	2	Includes (1) curbside and (1) roadside cage and bolts
16	PIN CAGE BOLT (Bolts are included in kits)	SA-6900-20	16	5/8"-11 x 1.75 flanged bolt
17	SLIDER WEAR PAD KIT	S-28640	2	Quantity of (1) needed for single; (2) for needed for tandem; and (3) needed for tridem. Includes (2) 49" pads and (10) screws
18	STINGER (Not shown)	S-27028-1	1	Includes (1) stinger and hardware

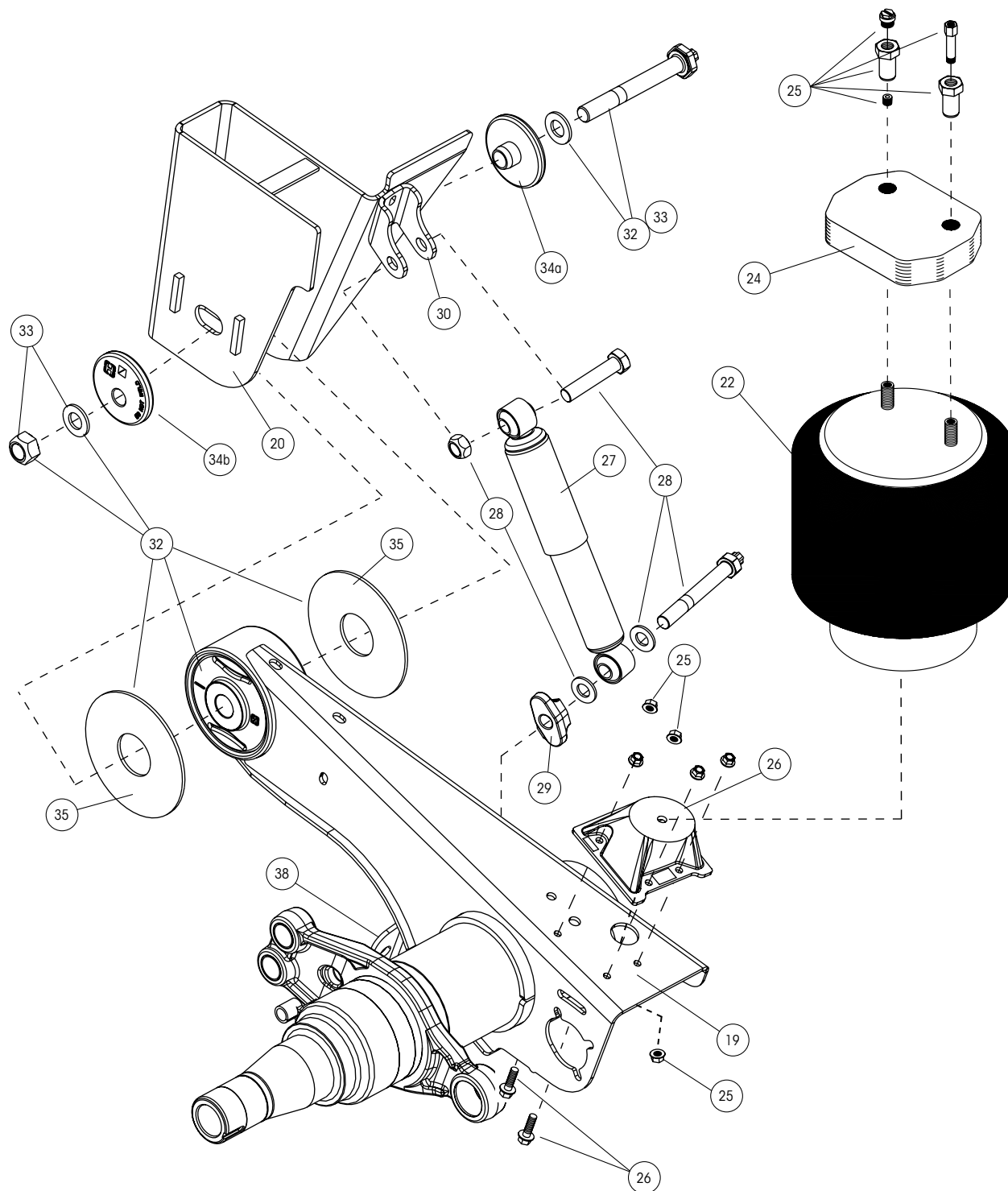
NOTE: Identification tag can be found on the roadside slider box rail above the front frame bracket gusset. There is also a blank INTRAAX tag on the inside of the curbside beam.

SLIDER PINS



SUSPENSION ASSEMBLY

Narrow Frame Bracket Assembly, Tapered Beam





SUSPENSION ASSEMBLY

All top-mount suspensions are narrow frame bracket / tapered beam assemblies.

All suspensions are 23K capacity; system capacity for tandem is 46K; system capacity for tridem is 69K.

Top-mount ride heights are 13.5" - 17"

ITEM	DESCRIPTION	PART NO.	QTY. PER AXLE	NOTE
19	AXLE/BEAM WELDMENT	HTRAAX.XXX		Contact Hendrickson for assistance
20	FRAME BRACKET			See L1266 Frame Bracket Parts List
21	FRAME BRACKET GUSSET (Shown on page 2)	S-27330	2	For weld-on, winged or wingless frame attachments; for ride heights of 12" to 17"
22	AIR SPRING			
	Standard	S-21800	2	13.5" to 17" ride height
	Low pressure	S-20901	2	13.5" to 17" ride height
23	AIR SPRING MOUNTING PLATE (Not shown)	S-20905	2	12" to 19" ride height
24	AIR SPRING SPACER	B-22510-1	2	Plastic 1-1/8" Thick Spacer; 17" ride height
25	AIR SPRING MOUNTING KIT (Per air spring)			
		S-22619/2	2	13.5" to 16" ride height
		S-22630/2	2	17" ride height
26	AIR SPRING SUPPORT CASTING			
		S-27447-1	1	13.5" and 14" ride height
		S-27447-3	1	15" ride height
		S-27447-4	1	16" and 17" ride height
27	SHOCK ABSORBER			
	Standard travel	S-23566	2	12" - 17" ride height
	Extended service with high damping	S-24023	2	12" - 17" ride height
28	SHOCK ABSORBER BOLT KIT (Per shock)	S-24049/2	2	One (1) required per shock
29	SHOCK SPACER (Included in Kit 28)	S-41186-1	2	
30	SHOCK MOUNT CLEVIS	C-20918	2	
31	SHOCK STRAP KIT (Not shown)			Includes (2) straps, (2) clevis and nylon ties
	Standard shock	C-23086-1	1	12" to 17" ride height
	Extended service with high damping	C-23086-2	1	12" to 17" ride height
32	TRI-FUNCTIONAL® BUSHING KIT ¹	S-26321	1	Includes (2) bushings, shear bolts, nuts, hardened washers and pivot bolt kit, bushing tube spacers and lube
33	QUIK-ALIGN® PIVOT BOLT KIT	S-24705	2	Includes 7" shear-type bolt, nut and washers
34	ALIGNMENT COLLARS			
	34a Concentric alignment collar (Inner)	S-20924	2	Pivot bolt hole is centered
	34b Eccentric alignment collar (Outer)	S-20925	2	Pivot bolt hole is offset from center
35	BUSHING TUBE SPACER	S-26807	4	
36	BRAKE KITS COMPONENTS (Not shown)			See L1104
37	AXLE COMPONENTS (Not shown)			See L1102
38	BRAKE CHAMBER BRACKET	S-24697	2	

1. Bushing tool, S-24736 is required to properly re-bush the suspension.

**ZMD® ZERO MAINTENANCE® DAMPING SPECIFIC COMPONENTS (Items not shown)**

ITEM	DESCRIPTION	PART NO.	QTY. PER AXLE	NOTE
	ZMD® AIR SPRING	C-39400	2	13.5" - 17" Ride Heights
	ZMD DOWNSTOP			
		C-33669	2	13.5" - 14" Ride Heights
		C-33669-3	2	15" - 17" Ride Heights
	ZMD DOWNSTOP BOLT KIT	S-24049/2	2	Includes shear bolts, spacers, washers, hex bolt and hex nut
	Air Spring Spacer			
		B-22510-2	2	16" Ride Height
		B-22510-1	2	17" Ride Height
	Air Spring Support Casting			
		S-27447-1	1	13.5" - 14" Ride Heights
		S-27447-3	1	15" Ride Height
		S-27447-2	1	16" Ride Height
		S-27447-4	1	17" Ride Height

**OTHER PARTS LISTS**

More information can be found in the following documents

Lit. Number	Description
L1102	Slider Accessories and Axle Components Parts List
L949	RTR® READY-TO-ROLL® Parts List
L589	TRI-FUNCTIONAL® Bushing Replacement Tool
L1063	Air Disc Brakes Parts List
L1104	Brake Kits and Components Parts List



NOTES:

Actual product performance may vary depending upon vehicle configuration, operation, service and other factors.

All applications must comply with applicable Hendrickson specifications and must be approved by the respective vehicle manufacturer with the vehicle in its original, as-built configuration. Contact Hendrickson for additional details regarding specifications, applications, capacities, and operation, service and maintenance instructions.

Call Hendrickson at **866.RIDEAIR (743.3247)** for additional information.



www.hendrickson-intl.com

TRAILER COMMERCIAL VEHICLE SYSTEMS

2070 Industrial Place SE
Canton, OH 44707-2641 USA
866.RIDEAIR (743.3247)
Fax 800.696.4416

Hendrickson Canada ULC

2825 Argentia Road, Unit #2 - 4
Mississauga, ON Canada L5N 8G6
800.668.5360
905.789.1030 • Fax 905.812.9423

Hendrickson Mexicana

Circuito El Marqués Sur #29
Parque Industrial El Marqués
Pob. El Colorado, Municipio El Marqués,
Querétaro, México C.P. 76246
+52 (442) 296.3600 • Fax +52 (442) 296.3601