

H PARTS LIST

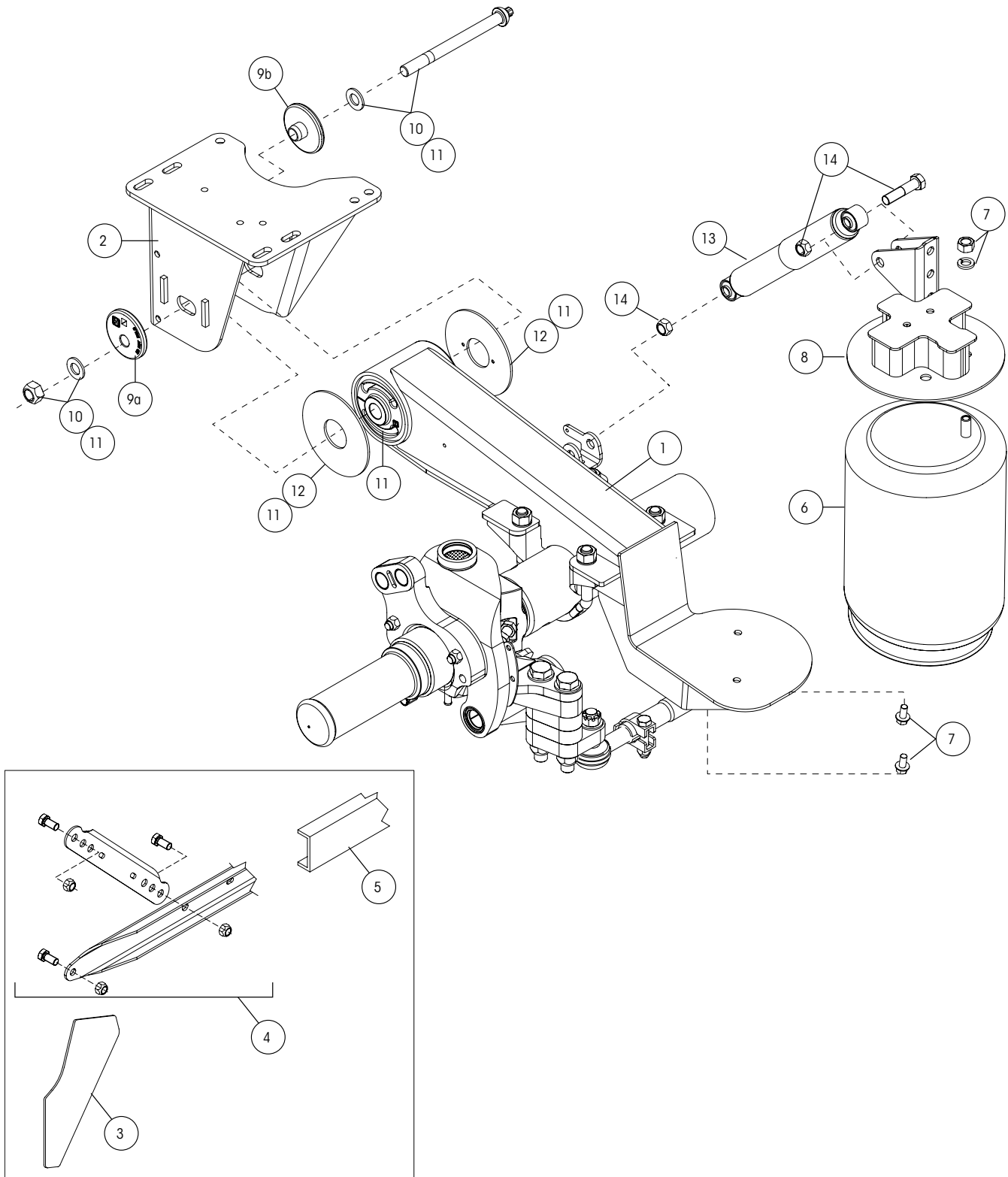
CONNEX® ST CXSL 25K

LIT NO: L1277

DATE: December 2024

REVISION: H







ITEM	DESCRIPTION	PART NO.	QTY.	NOTE
1	AXLE / BEAM WELDMENT		1	Contact Hendrickson for assistance
2	FRAME BRACKET ¹		2	See L1266 Frame Bracket Parts List
3	FRAME BRACKET GUSSET	S-27330	2	Winged Weld-On Frame Brackets only
4	BOLT-ON C-CHANNEL KIT ²		1	
	28.5" beam center	S-31901-6	1	
	30.0" beam center	S-31901-7	1	
	32.5" beam center	S-31901-8	1	
	36.0" beam center	S-31901-10	1	
	36.5" beam center	S-31901-5	1	
	37.5" beam center	S-31901-11	1	
	38.5" beam center	S-31901-12	1	
	39.5" beam center	S-31901-13	1	
5	WELD-ON C-CHANNEL			
	28.5" - 32.5" suspension beam center	A-1631-16	1	
	32.5" - 39.5" suspension beam center	A-1631-19	1	
6	AIR SPRING			
	Standard	S-20124	2	
	Low Pressure	S-20127	2	
7	AIR SPRING MOUNTING KIT	S-20033/2	2	Includes: 2 flanged screws, 1 hex nut and 1 lock washer
8	AIR SPRING SHOCK MOUNT			
	BOLT-ON ³			
	13" - 14" ride height	S-36248-L-R	1	No spacer just .25" plate and shock mount
	15" ride height	S-36248-1L-1R	1	1.19" spacer / plate height and shock mount
	16" ride height	S-36248-2L-2R	1	2.19" spacer / plate height and shock mount
	17" ride height	S-36248-3L-3R	1	3.19" spacer / plate height and shock mount
	18" ride height	S-36248-4L-4R	1	4.19" spacer / plate height and shock mount
	19" ride height	S-36248-5L-5R	1	5.19" spacer / plate height and shock mount
	WELD-ON			
	13" - 14" ride height	C-21216-1C-2C	1	No spacer just .19" plate and shock mount
	15" ride height	C-21217-1C-2C	1	1.00" spacer / plate height and shock mount
	16" ride height	C-21218-1C-2C	1	2.00" spacer / plate height and shock mount
	17" ride height	C-21219-1C-2C	1	3.00" spacer / plate height and shock mount
	18" ride height	C-25932-1C-2C	1	4.00" spacer / plate height and shock mount
	19" ride height	C-21223-1C-2C	1	5.00" spacer / plate height and shock mount
9	ALIGNMENT COLLARS			
9a	Eccentric	S-20925	2	Pivot bolt hole is offset from center of collar
9b	Concentric	S-20924	2	Pivot bolt hole is in center of collar
10	QUIK-ALIGN® PIVOT BOLT KIT ⁴	S-24679	2	Includes: Bolt, hex nut and 2 hardened washers
11	TRI-FUNCTIONAL® BUSHING KIT ⁵	S-24691	2	Includes: 1 TRI-FUNCTIONAL Bushing, 1 pivot bolt kit, 2 bushing tube spacers and lube packet
12	BUSHING TUBE SPACERS	S-21099	4	
13	SHOCK ABSORBER		2	See L1287 Shock and Shock Strap Parts List
14	SHOCK BOLT KIT	S-20031/2	2	One kit per shock
15	SHOCK STRAP KIT (Not Shown)		1	See L1287 Shock and Shock Strap Parts List

1. Options exist based on frame attachment, frame bracket style, bolt hole pattern and connection. Contact Hendrickson for assistance or refer to L1266 Frame Bracket Parts List.

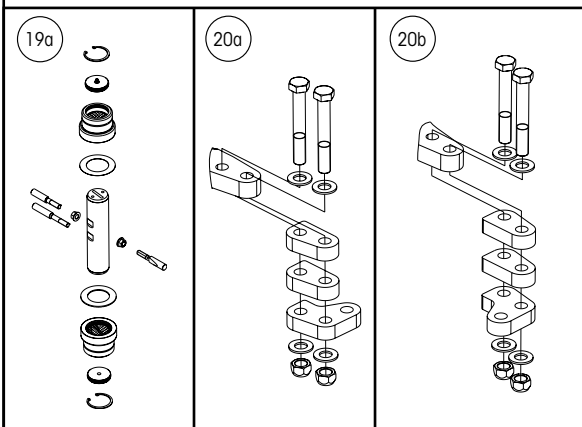
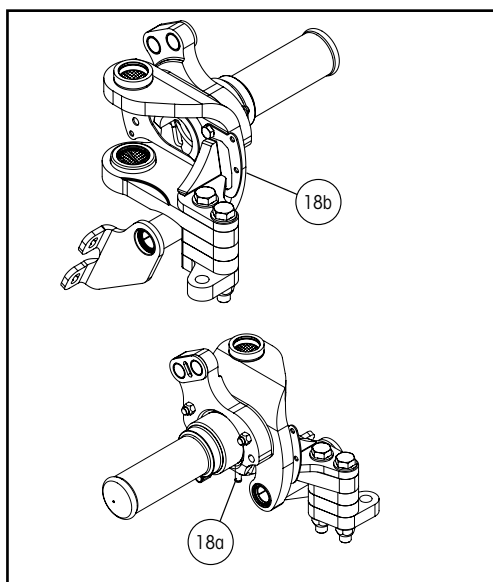
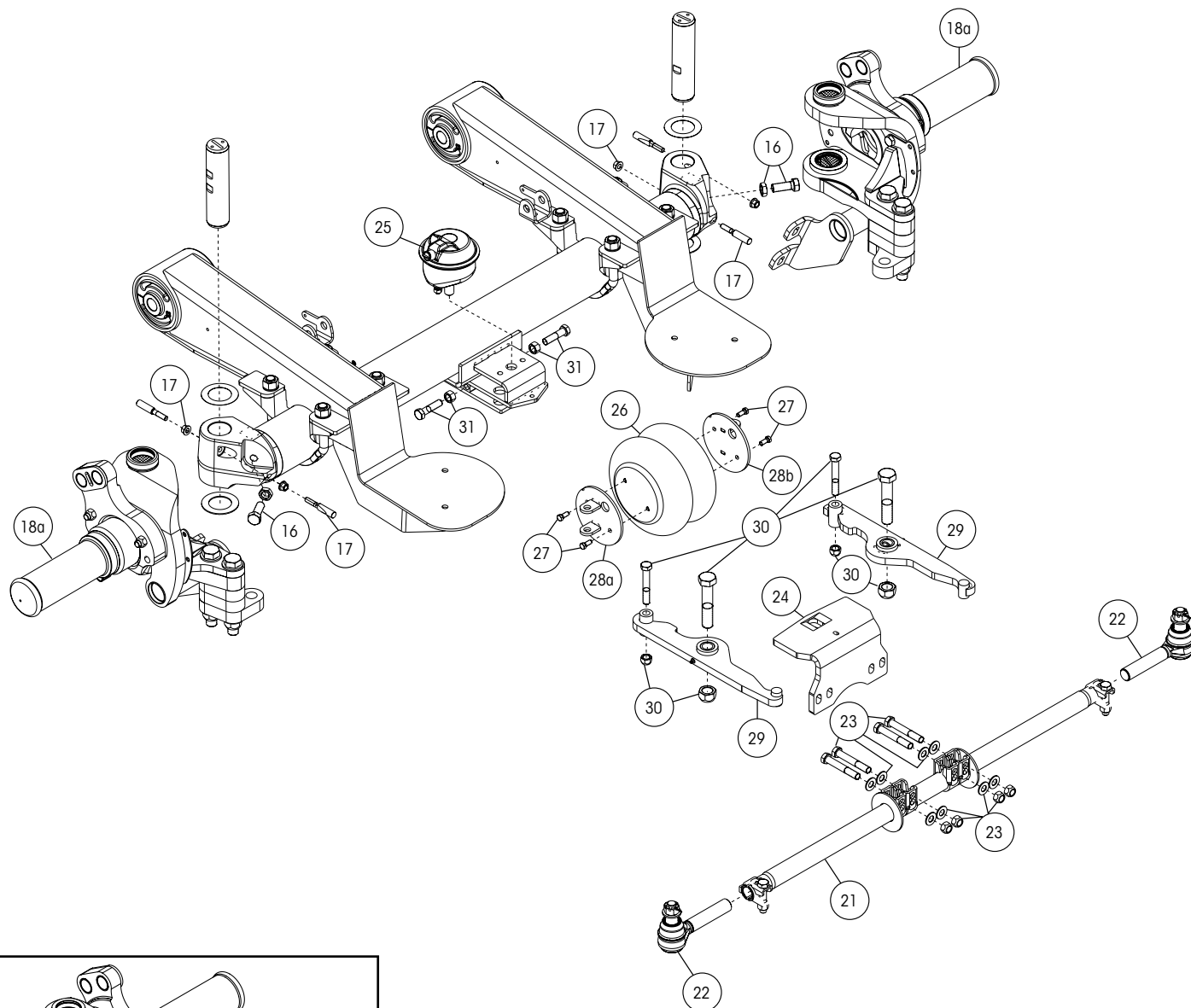
2. Bolt-on c-channel struts are only optional for bolt-on frame brackets. Other options exist for galvanized or different track widths.

3. Other options exist for galvanized. Contact Hendrickson for assistance.

4. Best installed with Hendrickson's E-20 socket S-24536 (1-inch drive sleeveless), S-25119 (1-inch drive sleeve) or S-24303 (3/4-inch drive sleeveless).

5. Bushing tool S-21307 is required to correctly rebush the suspension.

NOTE: Identification tag can be found on the inside of the curbside beam.





STEER AXLE COMPONENTS

ITEM	DESCRIPTION	PART NO.	QTY.	NOTE
16	STOP BOLT KIT	S-38970-1	2	1 kit per side
17	DRAW KEY KIT	S-38971-1	2	1 kit per side
18	KNUCKLE ASSEMBLY			Includes: Tie rod mount kits, bushings and seals, draw key kit, kingpin, thrust washer, cap, shims and retaining ring
18a	Roadside			
	Standard	S-40342-1	1	
	TIREMAAX® Prepped	S-40342-1T	1	
18b	Curbside			
	Standard	S-40342-2	1	
	TIREMAAX Prepped	S-40342-2T	1	
19	KINGPIN KITS			
19a	Kingpin Housing Kit	S-38972-11	2	Includes: Draw Key kit, cap and retaining rings, thrust washer, shims and kingpin Kingpin Housings includes: bushings and seals
19b	Knuckle Shims (Not Shown)	S-40344	2	
20	TIE ROD MOUNT KIT			
20a	Roadside	S-38973-1L	1	For units built before September 2020; includes tie rod mount, spacers and hardware
20b	Curbside	S-38973-1R	1	For units built before September 2020; includes tie rod mount, spacers and hardware
20c	Roadside	S-38973-2L	1	For units built after September 2020; includes tie rod mount, spacers and hardware
20d	Curbside	S-38973-2R	1	For units built after September 2020; includes tie rod mount, spacers and hardware
21	TIE ROD ASSEMBLY			
	Axle Track 77.5	S-37487-2	1	Includes: Tie rod, center bracket clamps, Tie rod ends, castle nut, cotter pin and washer
	Axle Track 80.0 and 83.5	S-37487-3	1	Includes: Tie rod, center bracket clamps, tie rod ends, castle nut, cotter pin and washer
	Axle Track 84.0, 85.0 and 86.0	S-37487-4	1	Includes: Tie rod, center bracket clamps, tie rod ends, castle nut, cotter pin and washer
22	TIE ROD END			
22a	Lefthand Thread	S-38081-1L	1	Includes: Tie rod end, castle nut, cotter pin and washer
22b	Righthand Thread	S-38081-1R	1	Includes: Tie rod end, castle nut, cotter pin and washer
23	LOCK STRAIGHT CLAMP BOLT KIT	S-38974-1	1	Includes: Bolts, washers and nuts
24	LOCK STRAIGHT TIE ROD BRACKET	S-33830	1	
25	PIN LOCK CHAMBER	S-40876-1	1	Includes: Bolts, washers and nuts
26	LOCK STRAIGHT AIR SPRING	S-8768	1	
27	LOCK STRAIGHT AIR SPRING BOLT KIT	S-38975-1	1	
28	LOCK STRAIGHT AIR SPRING PLATE			
28a	Roadside	S-33832-1	1	
28b	Curbside	S-33832-2	1	
29	LOCK STRAIGHT ARM ASSEMBLY	S-33829	2	Includes: Arm weldment, bushing and grease zerk
30	LOCK STRAIGHT ARM BOLT KIT	S-38976-1	2	1 kit per side
31	LOCK STRAIGHT ARM STOP BOLT KIT	S-38977-1	2	1 kit per side

NOTES:

[illegible]

Actual product performance may vary depending upon vehicle configuration, operation, service and other factors.

*All applications must comply with applicable Hendrickson specifications and must be approved by the respective vehicle manufacturer with the vehicle in its original, as-built configuration.
Contact Hendrickson for additional details regarding specifications, applications, capacities, and operation, service and maintenance instructions.*

Call Hendrickson at 866.RIDEAIR (743.3247) for additional information.



www.hendrickson-intl.com

TRAILER COMMERCIAL VEHICLE SYSTEMS

2070 Industrial Place SE
Canton, OH 44707-2641 USA
866.RIDEAIR (743.3247)
Fax 800.696.4416

Hendrickson Canada ULC

2825 Argentinia Road, Unit #2 - 4
Mississauga, ON Canada L5N 8G6
800.668.5360
905.789.1030 • Fax 905.812.9423

Hendrickson Mexicana

Circuito El Marqués Sur #29
Parque Industrial El Marqués
Pob. El Colorado, Municipio El Marqués,
Querétaro, México C.P. 76246
+52 (442) 296.3600 • Fax +52 (442) 296.3601

L1277 Rev H 12-24

© 2017 - 2024 Hendrickson USA, L.L.C. All Rights Reserved. All trademarks shown are owned by Hendrickson USA, L.L.C., or one of its affiliates, in one or more countries.
Information contained in this literature was accurate at the time of publication. Product changes may have been made after the copyright date that are not reflected.

Printed in United States of America