

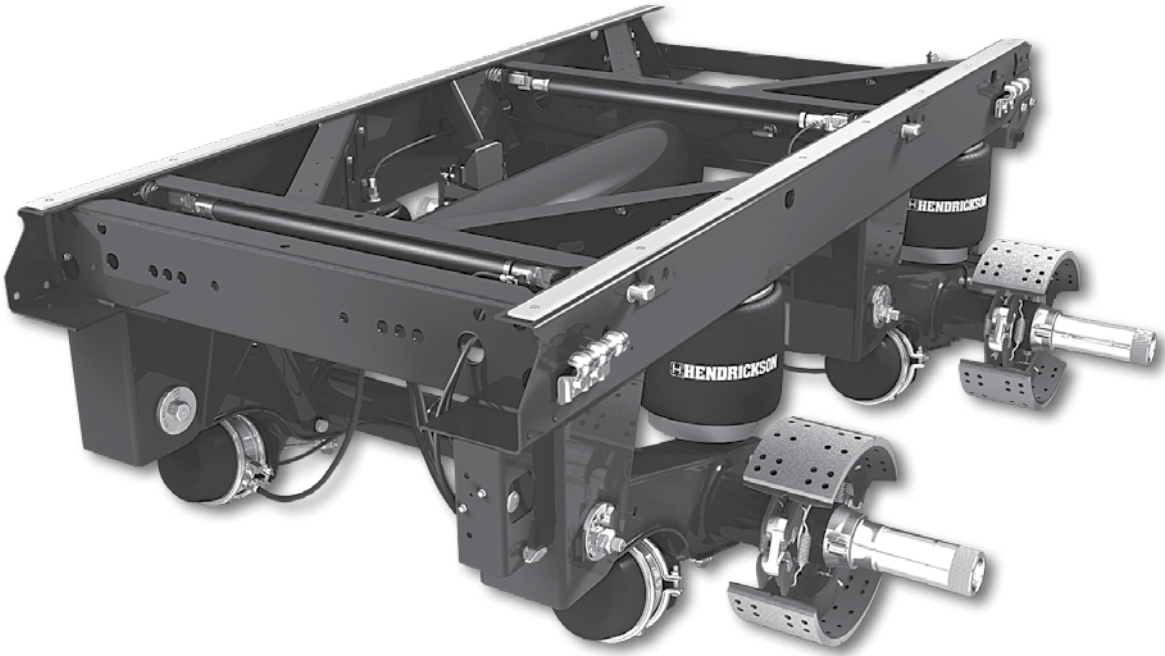
PARTS LIST

VANTRAX[®] HKAT 50K/
HKA 250

LIT NO: L561

DATE: July 2025

REVISION: F

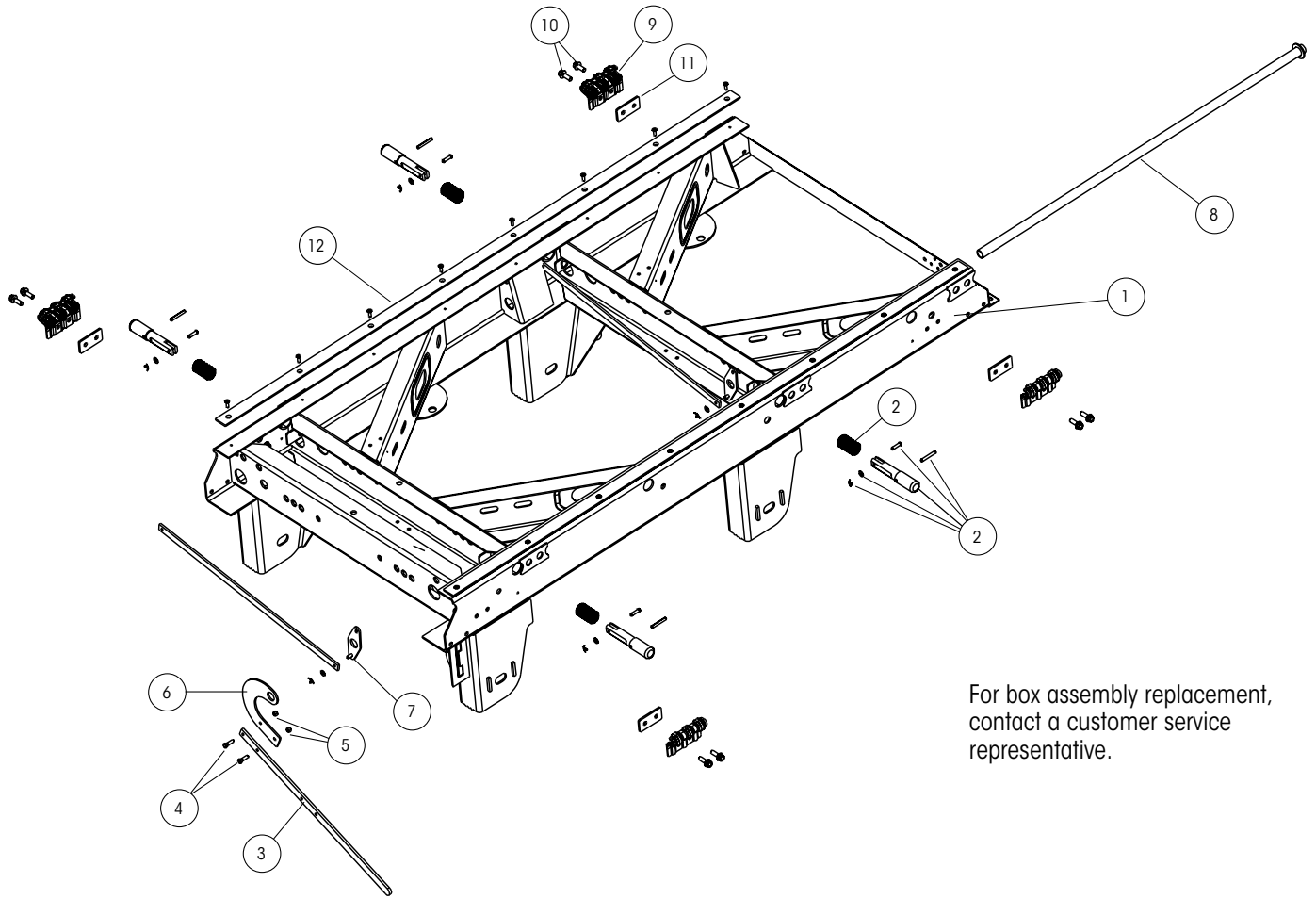


 **HENDRICKSON**

The World Rides On Us[®]

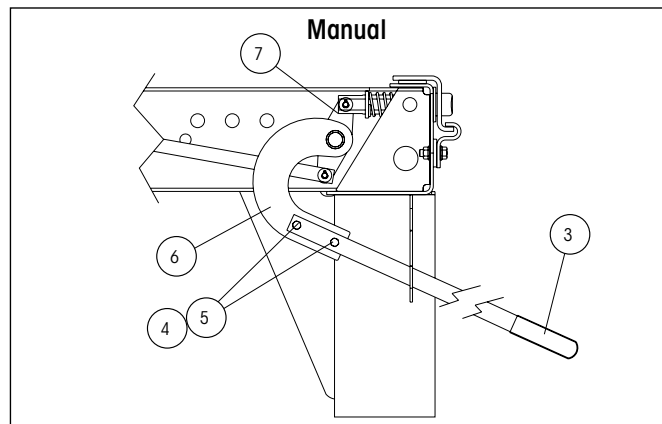


SLIDER BOX ASSEMBLY



For box assembly replacement, contact a customer service representative.

RELEASE MECHANISM



**SLIDER BOX ASSEMBLY**

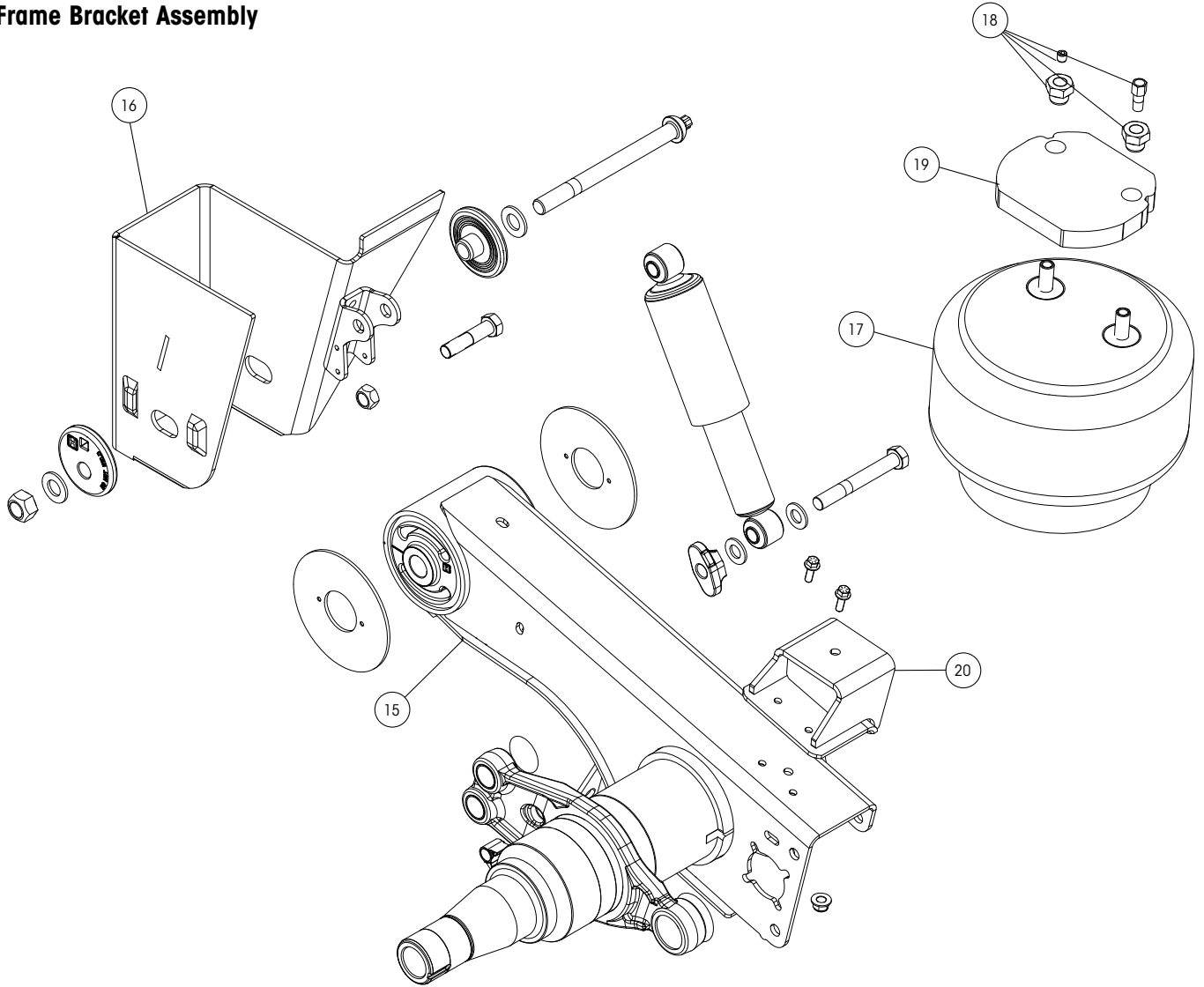
ITEM	DESCRIPTION	PART NO.	SYSTEM QTY.	NOTE
1	AFTERMARKET BOX REPLACEMENT	AMBOX.###	1	Many options exist. Contact Hendrickson with your model number for assistance. You can upgrade to QUIK-DRAW [®] pneumatic pin-pull system when you replace your slider box.
2	QUIK-DRAW[®] COMPONENTS			See L751 QUIK-DRAW Parts List
3	HANDLE ASSEMBLY			
	Manual and customer supplied	S-25592	1	Handle and grip assembly
	Mechanical air assist	B-22923	1	Handle only
4	HANDLE BOLT	SA-1100-10	2	2-3/8"-16 × 1-1/4" hex head bolt, grade 5
5	HANDLE NUT	SA-9000-5	2	2-3/8"-16 lock nut, grade B
6	HANDLE MOUNT			
	Manual	C-21275	1	
	Customer supplied	S-23534	1	Includes crank arm bolt kit
	Mechanical air assist	C-23231	1	
7	CRANK ARM WELDMENT			
	Manual and customer supplied	B-33010	2	For front and rear of slider box
	Mechanical air assist - rear (Not Shown)	B-33010	1	For rear of slider box
8	PIPE WELDMENT			
	Manual and mechanical air assist	S-21433	1	
	Customer supplied machanism	S-21433-1	1	
9	BODY RAIL CLIP			
	3.4" clip height	S-24459	4	Use with 4" hole centers
	3.8" clip height	S-24460	4	Use with 6" hole centers
10	BODY RAIL CLIP BOLT	SA-6900-2	8	1/2"-13" × 1-1/2" flanged bolt
11	BODY RAIL CLIP SPACER			
	2" clip hole centers	A-22367	4	
12	SLIDER WEAR PAD KIT	S-14342-3	2	Pad with screws
13	K-BRACE REINFORCEMENT KIT (16" Ride Height) (Not Shown)	S-27316-1	1	Includes (4) reinforcement plates, (4) air spring plates, screws and nuts
14	K-BRACE REINFORCEMENT KIT (All Other Ride Heights) (Not Shown)	S-27316-2	1	Includes (4) reinforcement plates, screws and nuts

Note: Identification can be found on the roadside slider box rail above the front frame bracket. There is also a blank INTRAAX[®] tag on the inside of the curbside beam.



SUSPENSION ASSEMBLIES

Frame Bracket Assembly



Manufactured Through 2009

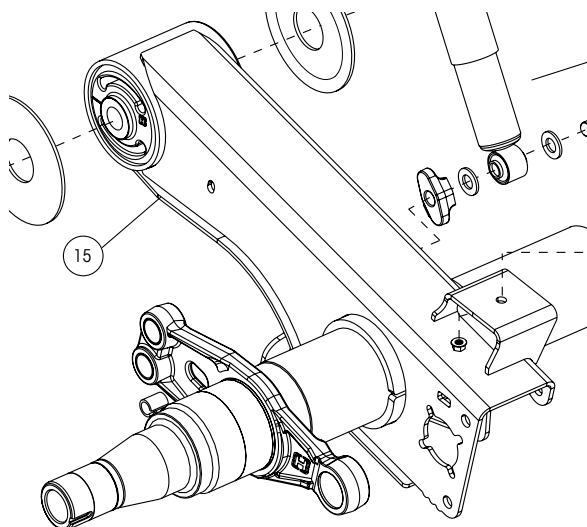


Illustration 2
With 2-inch, weld-on
air spring pedestal

**SUSPENSION ASSEMBLIES**

ITEM	DESCRIPTION	PART NO.	SYSTEM QTY.	NOTE
15	HALFTRAAX AXLE / BEAM WELDMENT	HTRAAX.###	2	Contact Hendrickson for assistance. Many options exist. Contact Hendrickson with your model number for assistance. You can spec your replacement axles fully dressed.
16	FRAME BRACKET			See L1266 Frame Bracket Parts List
17	AIR SPRING			See Page 7 for ZMD® Air Springs
	14" - 15" ride heights	S-20901	4	Includes air spring bottom disc
	16" - 19" ride heights	S-23748	4	Includes air spring bottom disc
18	AIR SPRING MOUNTING KIT			
	Standard Air Spring			
	14" and 16.5" ride heights	S-22635/2	4	Includes Spiralock nuts, pipe plug and flange nut
	16" ride height	S-22619/2	4	
	15" and 18" ride heights	S-22631/2	4	
	17" ride height	S-22630/2	4	
	19" ride height	S-22632/2	4	
	ZMD Air Spring			
	16" ride height	S-22630/2	4	Includes Spiralock nuts, pipe plug and flange nut
	16.5" ride height	S-22619/2	4	
	17" ride height	S-22635/2	4	
	18" ride height	S-22630/2	4	
19	AIR SPRING SPACER - When Model includes 2 weld-on pedestal under the air spring (illustration 2)			
	Standard Air Spring			
	Welded Pedestal			
	14" and 16.5" ride heights	S-22510-4	4	3/4" Spacer
	15" and 18" ride heights	S-22510-2	4	1-7/8" Spacer
	17" ride height	S-22510-1	4	1-1/8" Spacer
	19" ride height	S-22510-3	4	3-1/8" Spacer
	Bolt-On Pedestal			
	16.5" ride height	S-22510-4	4	3/4" Spacer
	18" ride height	S-22510-4	4	3/4" Spacer
	ZMD Air Spring			
	16" ride height	S-22510-1	4	3/4" Spacer
	17" ride height	S-22510-4	4	1-1/8" Spacer
	18" ride height	S-22510-1	4	3-1/8" Spacer
20	BOLT ON PEDESTAL			
	Standard Air Spring			
	16" and 16.5" ride heights	S-32164-1	2	
	17" and 18" ride heights	S-32164-2	2	
	19" ride height	S-32164-3	2	
	ZMD Air Spring			
	16" ride height	S-32164-2	2	
	16.5", 17" and 18" ride heights	S-32164-3	2	

Note: Identification can be found on the roadside slider box rail above the front frame bracket. There is also a blank INTRAAX® tag on the inside of the curbside beam.



SUSPENSION ASSEMBLIES

Frame Bracket Assembly

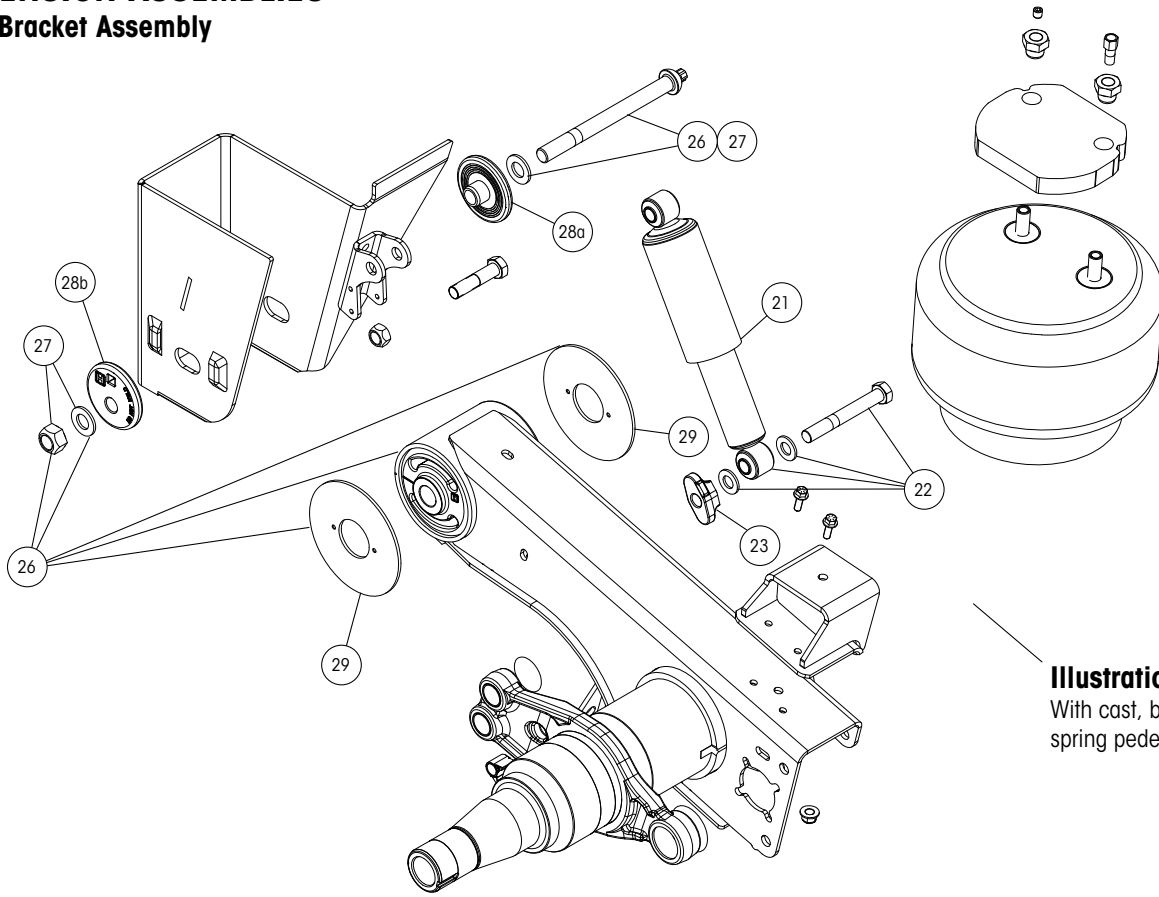
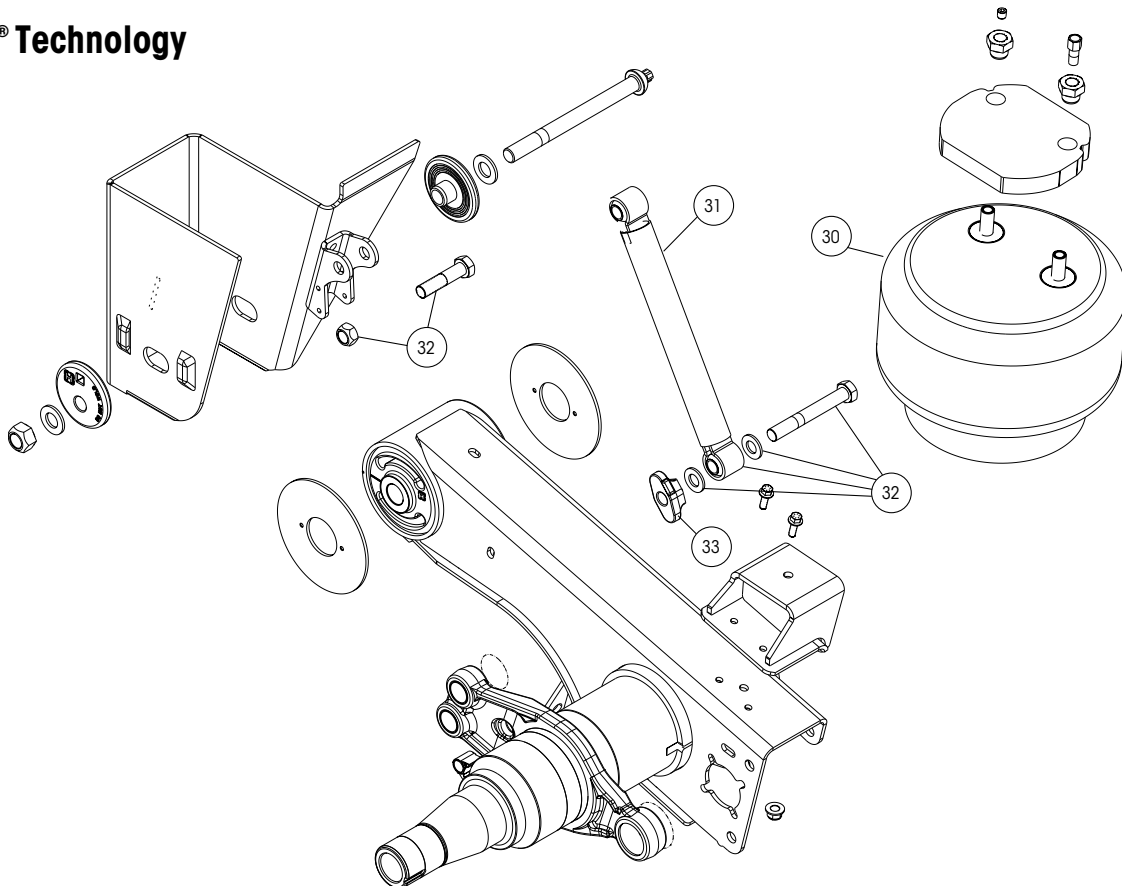


Illustration 1
With cast, bolt-on air spring pedestal

ZMD® Technology



**SUSPENSION ASSEMBLIES**

ITEM	DESCRIPTION	PART NO.	SYSTEM QTY.	NOTE
21	SHOCK ABSORBER Standard-Duty	S-24023	4	3/4" Spacer
22	SHOCK BOLT KIT	S-24049/2	4	Includes shear bolt, spacer, washers, hex bolt and hex nut
23	SHOCK SPACER	S-41186-1	4	
24	SHOCK STRAP (not shown)	C-24041-1	4	
25	SHOCK STRAP KIT (not shown)	S-23086-1	4	Includes strap, clevis and ties
26	TRI-FUNCTIONAL® PIVOT BUSHING KIT Wide bushing	S-24691	4	Includes (1) bushing, (1) pivot bolt kit, (2) bushing tube spacers and lubricant pack
27	QUIK-ALIGN® PIVOT BOLT KIT (alignment collars not included)	S-24679	4	Contains 10" bolt, nut and hardened washers
28	QUIK-ALIGN ALIGNMENT COLLARS			
	28a Concentric (inner)	S-20924	4	Pivot bolt hole is centered
	28b Eccentric (outer)	S-20925	4	Pivot bolt hole is offset from center
29	BUSHING TUBE SPACER	S-21099	8	Outer diameter dimension of TRI-FUNCTIONAL® Bushing inner-metal is 2.2". Inner hole dimension of bushing tube spacer is 2.38"

ZMD® ZERO MAINTENANCE DAMPING® COMPONENTS

ITEM	DESCRIPTION	PART NO.	QTY.	NOTE
30	ZMD® AIR SPRING	S-39401	4	
31	ZMD DOWNSTOP	S-33669-3	4	Includes shear bolt, spacer, washers, hex bolt and hex nut
32	SHOCK BOLT KIT	S-24049/2	4	Includes shear bolt, spacer, washers, hex bolt and hex nut
33	SHOCK SPACER	S-41186-1	4	
34	ZMD RETROFIT KIT (not shown)			Contact Hendrickson for assistance

