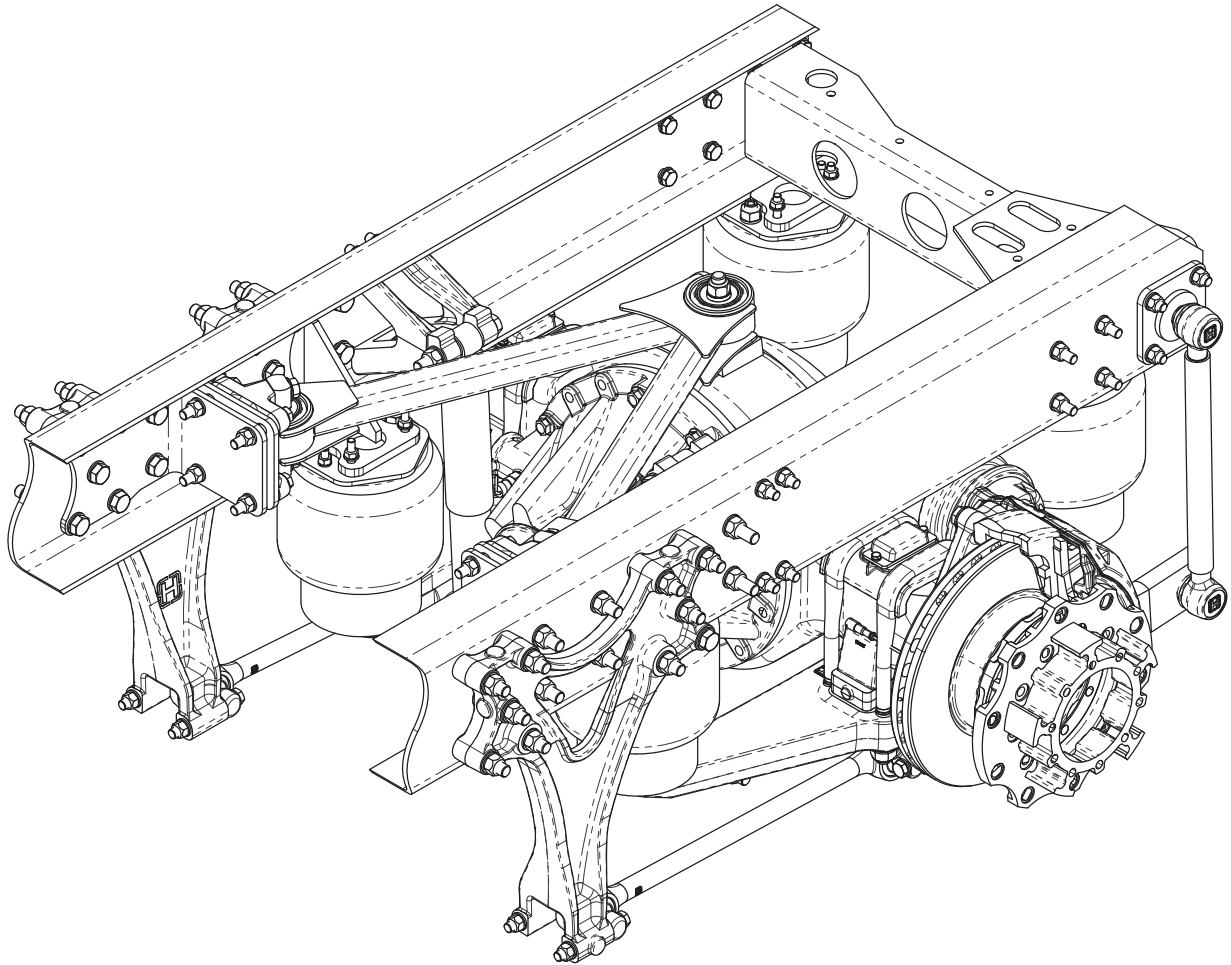


PARTS LIST HA4™ DENNIS EAGLE

LIT NO: 97114-082

DATE: October 2024

REVISION: C

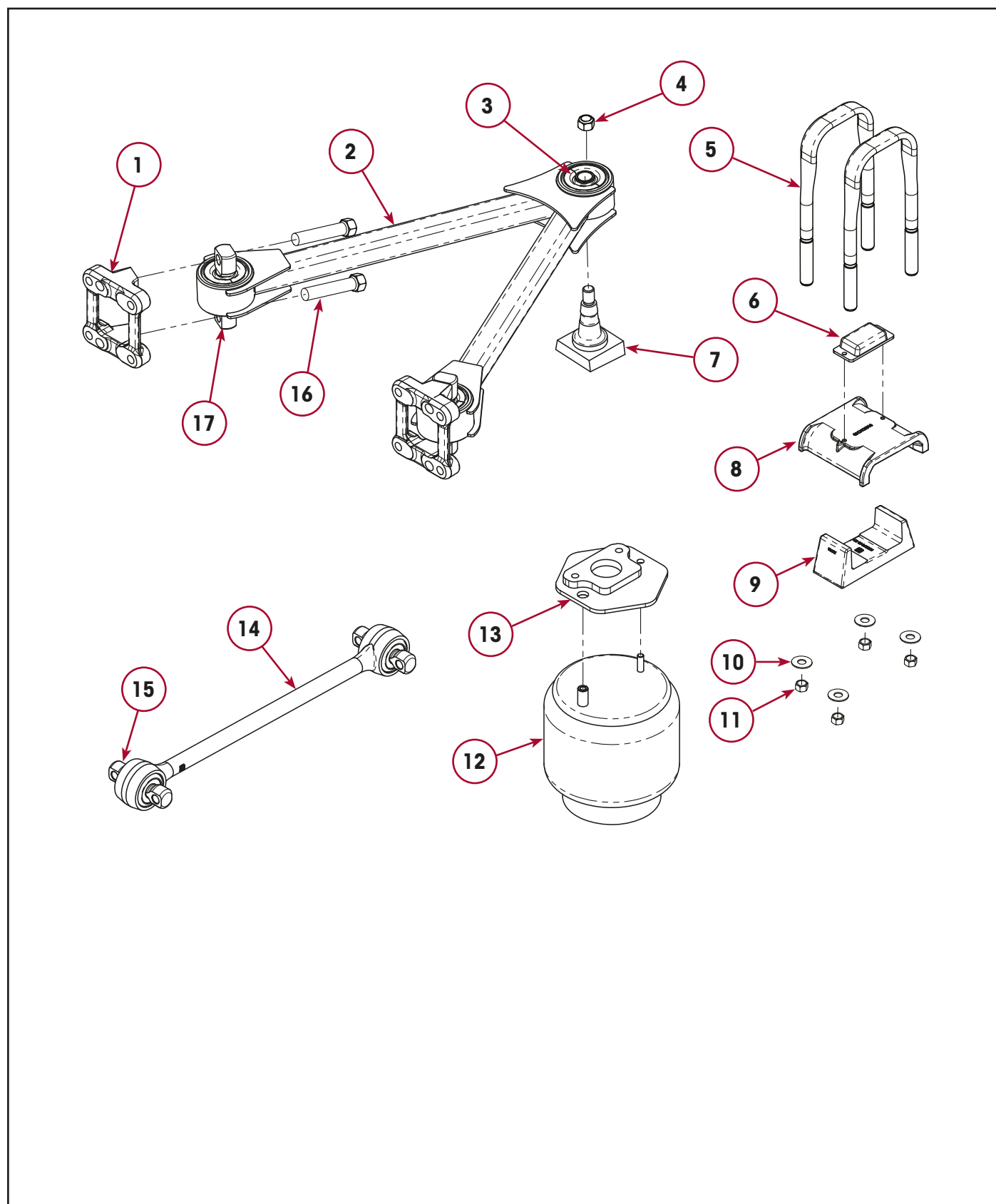


INTRODUCTION

The HA4™ suspension system is a single axle, four air spring suspension system for medium and heavy-duty truck applications. This parts listing is in support of the HA4 as fitted to Dennis Eagle trucks as sold in Australia and New Zealand. Beams and roll bar bush design changed during 2017. Refer to notes and images for further details and identification.

NOTE: Component quantities shown in this listing is per vehicle.

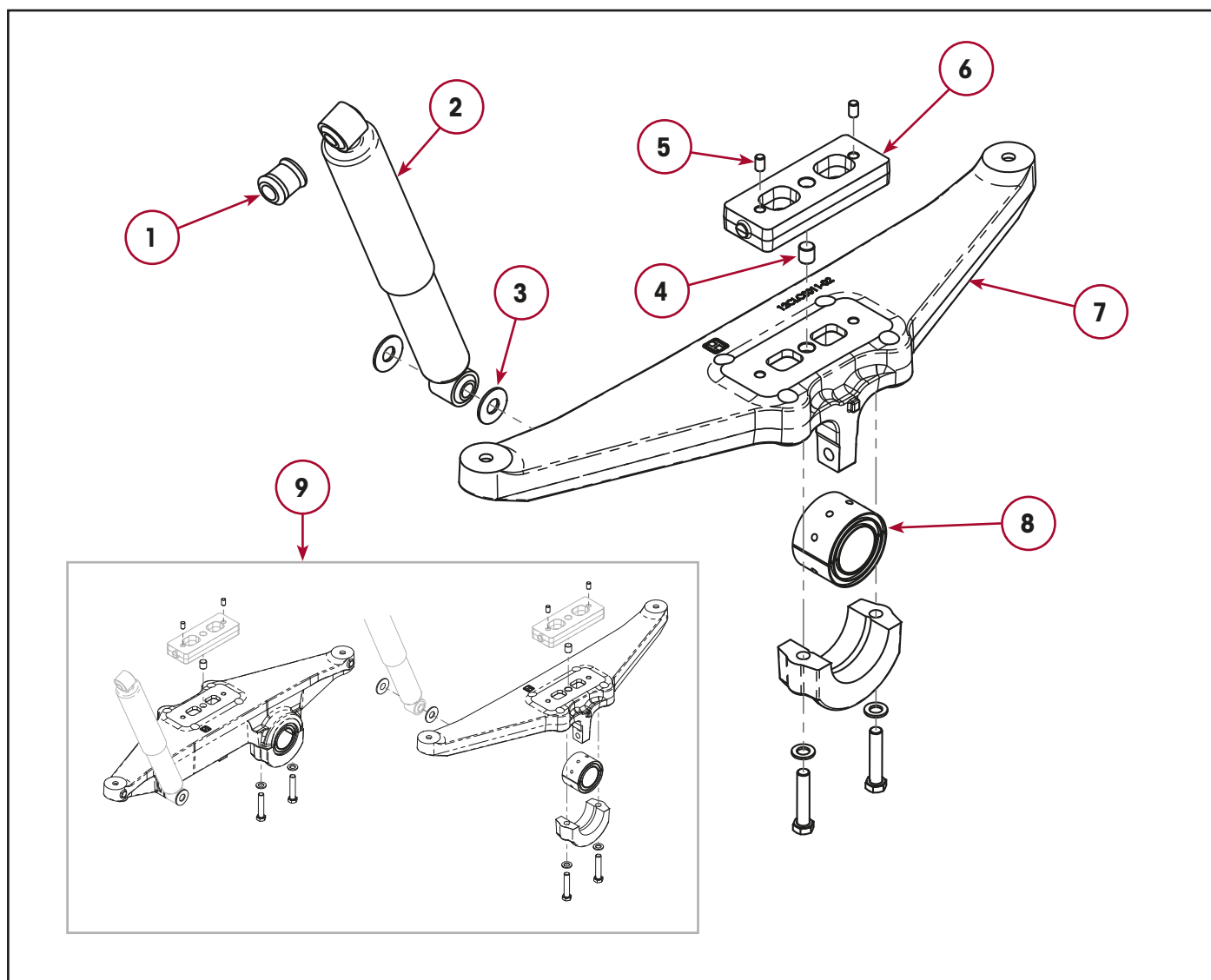
CONTROL ARM, SPRINGS & U-BOLTS



**CONTROL ARM, SPRINGS & U-BOLTS**

Item	Part Number	Description	Qty	Notes
1	NS140215	Bracket, Frame –Control Arm	2	
2	NS140270-47	Control Arm Assembly	1	Includes bushes, items 3 & 17.
3	NS140059	Bush - Control Arm to Pillar Pin	1	Included in control arm assembly, item 2.
4	NF1011	Nut, Control Arm to Pillar Pin – M22	1	
5	HS509686	U-Bolt, Axle to Beam Assembly	4	
6	NS500444	Bump Stop	2	
7	HS221131	Pillar Pin Assembly – Control Arm	1	
8	83CXC0018	Seat – U Bolt	2	
9	HS509343-1	Seat, Beam – 1° Lower	2	
10	HF100259	Washer, U-bolt – M24	8	
11	HF100252	Nut, U-bolt – M24	8	
12	21AXC0009	Air Spring	4	
13	HS509692	Bracket, Air Spring – Upper	2	LH front & RH rear.
	HS509693	Bracket, Air Spring – Upper	2	RH front & LH rear.
14	30AXC0011	Torque Rod Assembly – 680 mm	2	Includes bushes, item 15.
15	HS141033	Bush – Torque Rod	4	Part of torque rod assembly, item 14.
16	NF1136	Bolt, Control Arm to Frame Bracket – M20	4	
17	NS140179	Bush – Control Arm to Frame Bracket	2	Included in control arm, item 2.

BEAMS & COMPONENTS FROM 2017

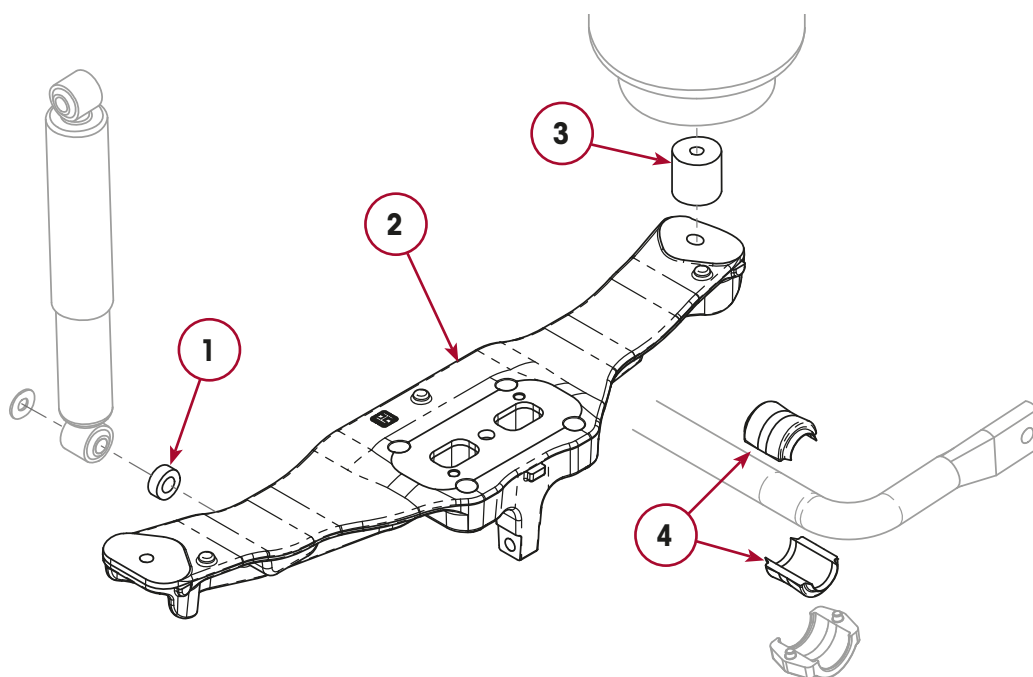


Item	Part Number	Description	Qty	Notes
1	HS505420	Shock Absorber Bush	4	Included in shock absorber, item 2.
2	HS505091	Shock Absorber	2	Includes bushes, item 1.
3	QF100027	Washer – Shock Absorber	4	Required either side of lower shock bushes.
4	NS320712	Dowel – Beam Seat – Ø 20 mm	2	Suspensions may use different beam seat dowel placement. Select the size and quantity required.
5	83CXC0019	Dowel – Beam Seat – Ø 12 mm	4	
6	83CXC0001	Machined Beam Spacer	2	
7	NSS	Beam Assembly	2	Use beam replacement kit, item 9.
8	81CXB0001	Bush – Anti-Roll Bar – Updated	2	Updated bushes will not fit early beams. Refer next page.
9	01AXA0006	Beam Replacement & Upgrade Kit	1	See <i>Beam Replacement Kit</i> note. Suits all years.

BEAM REPLACEMENT KIT: Beam replacement and upgrade kits contains axle spacer dowel set, left and right updated beams, upgraded roll bar bushes, and four shock mounting washers. If using this kit, new hardware will be required for both lower shock absorber and lower air spring mounting. These are available from Denis Eagle. It is also recommended that the axle U-bolts, and associated nuts and washers be replaced. Refer “Control Arm, Springs & U-Bolts” on page 2.

BEAMS & COMPONENTS UP TO 2017

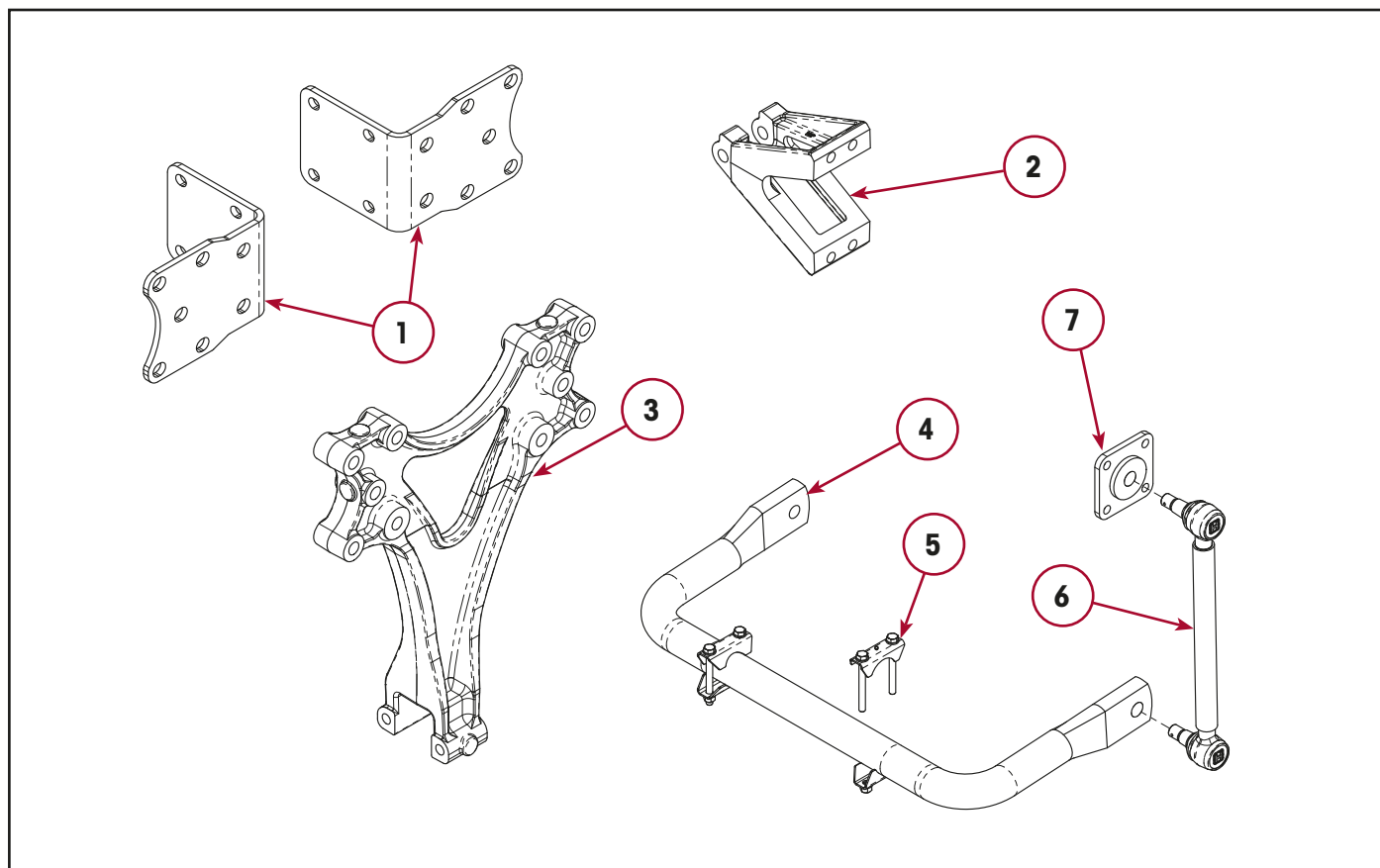
NOTE: The components shown on this page are unique to vehicles built up to 2017. Refer to illustration for further identification and the relevant page for components not shown here.



Item	Part Number	Description	Qty	Notes
1	83CXC0006	Spacer – Shock Absorber	2	Suits early beam design.
2	NLA	Beam Assembly – RH	1	Use beam replacement and upgrade kit, item 9 on page 4.
	NLA	Beam Assembly – LH	1	
3	83CXC0009	Spacer – Air Spring	4	Suits early beam design.
4	HS508743	Bush – Anti-Roll Bar – Early	4	[1] Suits early beam design.

[1] NOTE: It is recommended that vehicles requiring anti-roll bar bushes use the upgraded replacement beam kits, which use enhanced ARB bushes. Refer item 9 on page 4.

ROLL BAR, FRAME ATTACHMENT & HANGERS



Item	Part Number	Description	Qty	Notes
1	HS509621	Bracket, Corner	4	
2	HS509173	Bracket – Shock Absorber Mount, Upper	2	
3	HS508614	Hanger, Suspension - Front	2	
4	32CXC0003	Bar – Anti-Roll	1	
5	HS508901	Clamp Assembly – Anti-Roll Bar	2	
6	30AXC0004	Link Assembly – Anti-Roll Bar	2	Includes Fasteners.
7	HS509712	Bracket – Anti-Roll Bar Link, Upper	2	

Revisions Table

DATE	REV	PAGE	DESCRIPTION
Oct-2024	C	All	Add updated replacement beam kit and reformat document to suit, ECN 11904.

Actual product performance may vary depending upon vehicle configuration, operation, service and other factors.
All applications must comply with applicable Hendrickson specifications and must be approved by the respective vehicle manufacturer with the vehicle in its original, as-built configuration.
Contact Hendrickson for additional details regarding specifications, applications, capacities, and operation, service and maintenance instructions.

Need Help? Call **03 8792 3600** or Email **customerservice@hendrickson.com.au**



www.hendrickson.com.au

HENDRICKSON ASIA PACIFIC PTY LTD
ABN 21 004 992 769
32-44 Letcon Drive, P.O. Box 1063
Dandenong, Victoria, 3175
61.3.8792.3600 • Fax 61.3.8792.3699

HENDRICKSON NEW ZEALAND
Unit P, 24 Allright Place
Mt Wellington, Auckland, 1060
64.9.570.4721 • Fax 64.9.570.4816