

Asia Pacific Region Only



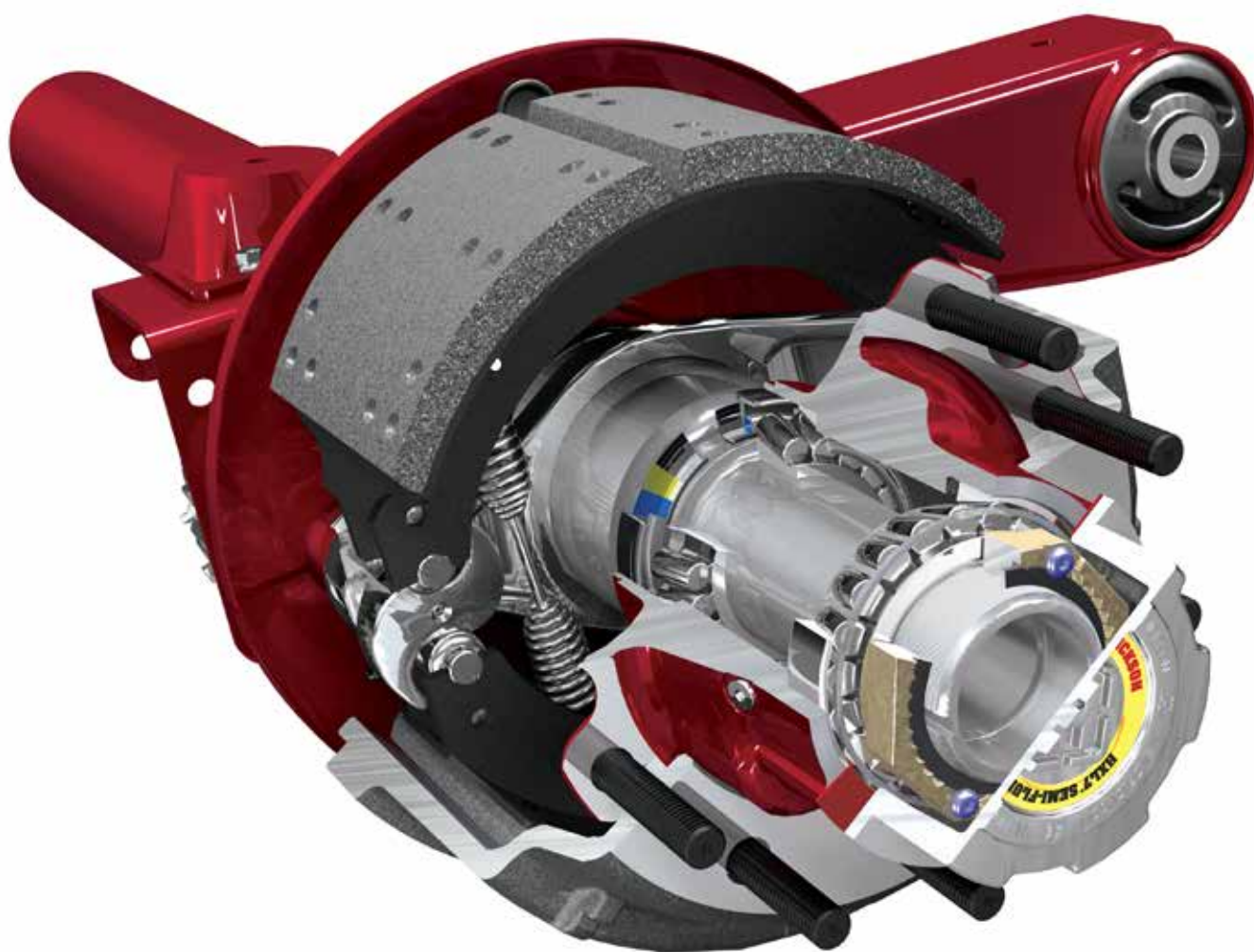
PARTS LIST

WHEEL END SYSTEMS & COMPONENTS

LIT NO: 97114-100

DATE: March 2024

REVISION: J



HENDRICKSON

The World Rides On Us®



TABLE OF CONTENTS

INTRODUCTION	3
Abbreviations	3
WHEEL END IDENTIFICATION	4
BEARING PACKAGE IDENTIFICATION	4
SPINDLE IDENTIFICATION	4
PCD – PITCH CIRCLE DIAMETER	4
IRON OR ALUMINIUM?	4
DUCTILE IRON OR ADI?	4
WHEEL STUD SELECTION	5
WHEEL END COMPONENTS	6
HXL7® HP DRUM BRAKE WHEEL END – 19.5 & 22.5	6
HXL7® HP DISC BRAKE WHEEL END – 22.5	8
HXL2™ & HXL5® HP DRUM BRAKE WHEEL END – 22.5	10
HXL2™ & HXL5® HN DRUM BRAKE WHEEL END – 22.5	12
HXL2™ & HXL5® HN DISC BRAKE WHEEL END – 19.5 & 22.5	14
PRESET HP DRUM BRAKE WHEEL END – 22.5	16
PRESET HN DRUM BRAKE WHEEL END – 19.5 & 22.5	18
PRESET HN DISC BRAKE WHEEL END – 22.5	20
CONVENTIONAL HP DRUM BRAKE WHEEL END – 22.5	22
CONVENTIONAL HN DRUM BRAKE WHEEL END – 22.5	24
CONVENTIONAL HN DISC BRAKE WHEEL END – 19.5 & 22.5	26
CONVENTIONAL HN 5 SPOKE SPIDER WHEEL END – 22.5	28
HUS™ DRUM BRAKE WHEEL END – 22.5	30
WHEEL END EXTRAS	31
Hubodometer	31
Spindle End Plug & Filter	31
HUBCAPS	32
TIREMAAX Hubcaps	32
Hubcap Decals	33
Hubcaps	33
Toowoomba Screw-On Hubcap	33
SPECIAL TOOLS	34
LUBRICANTS	35

Document Interactivity

The interactive **Table of Contents** allows users to quickly navigate to the appropriate page with a single mouse click. The **INDEX** button at the bottom of each page returns you to the **Table of Contents**. Other links within the document are identified by black underlined text, whereas links to external websites are identified by blue underlined text.



INTRODUCTION

The purpose of this parts list is to document the available repair parts, accessories, special tools and lubricants available for the wheel-ends installed to Hendrickson TOUGHLIFT™ liftable truck suspension, CONNEX™ ST steerable suspension, TRLAXLE® loose axle and INTRAAX® integrated axle suspension systems for drum and disc brake applications as follows:

- 5 Spoke Spider
- Aluminium PreSet
- Conventional
- Hendrickson Extended Life (HXL™)
- Hendrickson Unitized System (HUS™)
- Wheel End Accessories

The wheel ends listed are available to suit both HN (tapered) and HP (parallel) spindles in 8 stud 275 PCD, 10 stud 285 mm PCD and 10 stud 335 mm PCD configurations where applicable. Identification information is available [“Wheel End Identification” on page 4.](#)

Further information regarding braking system components and replacement parts is available in Hendrickson Brake Parts List [97114-097](#).

QUANTITY LISTED: All quantities listed within this parts list are as applicable for one wheel end assembly.

WHEEL STUDS: Wheel stud dimensions listed are measured from underneath the stud head to the end of the stud. This dimension may have a tolerance of up to ± 3 mm. For more information refer to [“Wheel Stud Selection” on page 5.](#)

ABS TONE RINGS: ABS tone rings as listed here when they part of the hub. Tone rings that are part of the rotor are listed in the Hendrickson Brake Parts list [97114-097](#).

Maintenance Information: For wheel end inspection and maintenance procedures refer to Hendrickson Wheel End Maintenance Manual [97117-250](#).

Abbreviations

Abbreviations used in this document may include the following terms:

- AR – As Required
- ADI – Austempered Ductile Iron, which is a tough but lightweight iron
- Exc – Except
- Incl – Includes
- NLA – No Longer Available
- NSS – Not Serviced Separately
- w/o – Without
- PCD – Pitch Circle Diameter

WHEEL END IDENTIFICATION

BEARING PACKAGE IDENTIFICATION

Hubcaps on Hendrickson axles will usually be marked with the [H] logo coupled with an identifying label. The label will specify what type of wheel end is fitted to the axle, such as HXL5® or HXL7®. (Refer [Figure 1](#).) For details on how to identify a Hendrickson suspension refer to Hendrickson Trailer Suspension identification guide [97117-151](#).

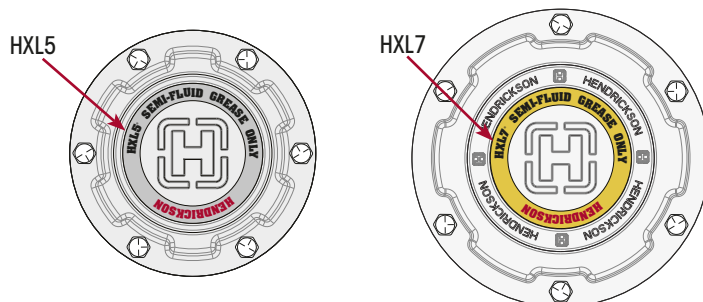


Figure 1: HXL5 and HXL7 Identifying Hubcap Label

SPINDLE IDENTIFICATION

Hendrickson suspensions and axles may be available with either HN (Tapered) or HP (Parallel) spindles. A relative comparison of spindle type can be made by examining hubcap size and end of spindle. HN spindle nut thread is around 67 mm, while the HP spindle nut thread is around 89 mm. Refer [Figure 2](#) and [Figure 3](#).

Tip: HXL7 is only available with HP parallel spindle.

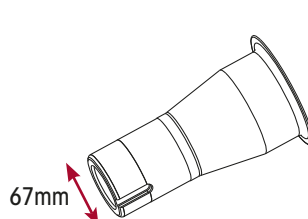


Figure 2: HN Tapered Spindle

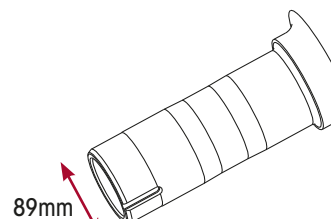


Figure 3: HP Parallel Spindle

PCD – PITCH CIRCLE DIAMETER

The Pitch Circle Diameter (PCD) is the diameter of the imaginary circle that passes through the centre of all the wheel studs. Truck and trailers usually have eight or ten wheel studs, which makes measuring PCD straightforward. Measure from the centre of one stud across to the centre of the stud diametrically opposite on the opposite side of the hub. Refer to [Figure 4](#). Common PCD dimensions are 275mm for 8-Stud and 285mm (11.25") or 335mm for 10-stud wheel ends.

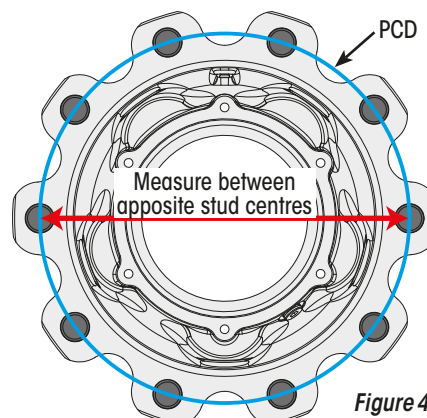


Figure 4: Measuring PCD

IRON OR ALUMINIUM?

It can be difficult to determine if a hub is iron or aluminium if it is covered in paint or dirt. One of the easiest checks is to use employ a magnet, which will be attracted to iron hubs.

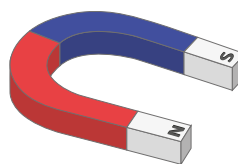


Figure 5: Magnets Attract Iron

DUCTILE IRON OR ADI?

Austempered Ductile Iron (ADI) is a specially treated ductile iron that gives it greatly increased tensile strength and toughness. Components especially designed to make use of this extra strength can be made lighter and stronger than aluminium. ADI hubs use a unique construction that removes excess metal and gains durability. They can most easily be identified by the scalloping around the wheel studs. Refer [Figure 6](#) and [Figure 7](#).

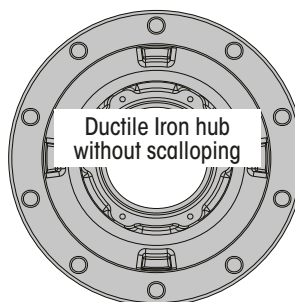


Figure 6: Ductile Iron Hub

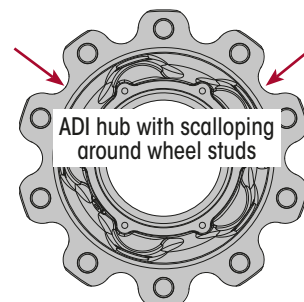


Figure 7: ADI Hub

WHEEL STUD SELECTION

To select the correct wheel stud, first determine what sort of brake, hub and spindle design is applicable. This flow chart used in conjunction with the identification information on [page 4](#) will assist.

Then measure the length of the stud from underneath the head until the tip and compare with the measurements shown in [Table 1](#) and [Figure 8](#).

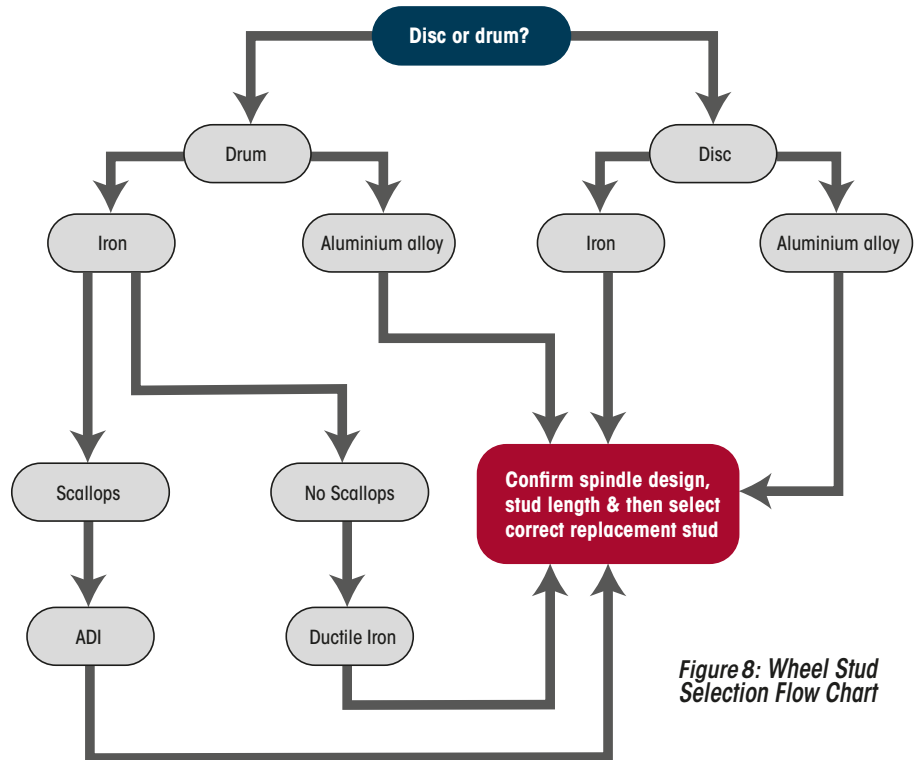


Figure 8: Wheel Stud Selection Flow Chart

Part Number	Brake	Hub Material	Spindle	A – Length	B – Thread	C – Shoulder
98900-024	Drum	ADI	HN & HP	107 mm	89 mm	14 mm
98900-020	Drum	Ductile Iron	HN & HP	101 mm	79 mm	18 mm
98900-019	Disc & Drum	Ductile Iron	HN & HP	122 mm	95 mm	18 mm
98900-002	Drum	Aluminium	HN	122 mm	90 mm	20 mm
98900-022	Disc	Aluminium	HN	126 mm	78 mm	39 mm
98900-021	Drum	Aluminium	HP	135 mm	87 mm	39 mm

Table 1: Wheel Stud Selection Table

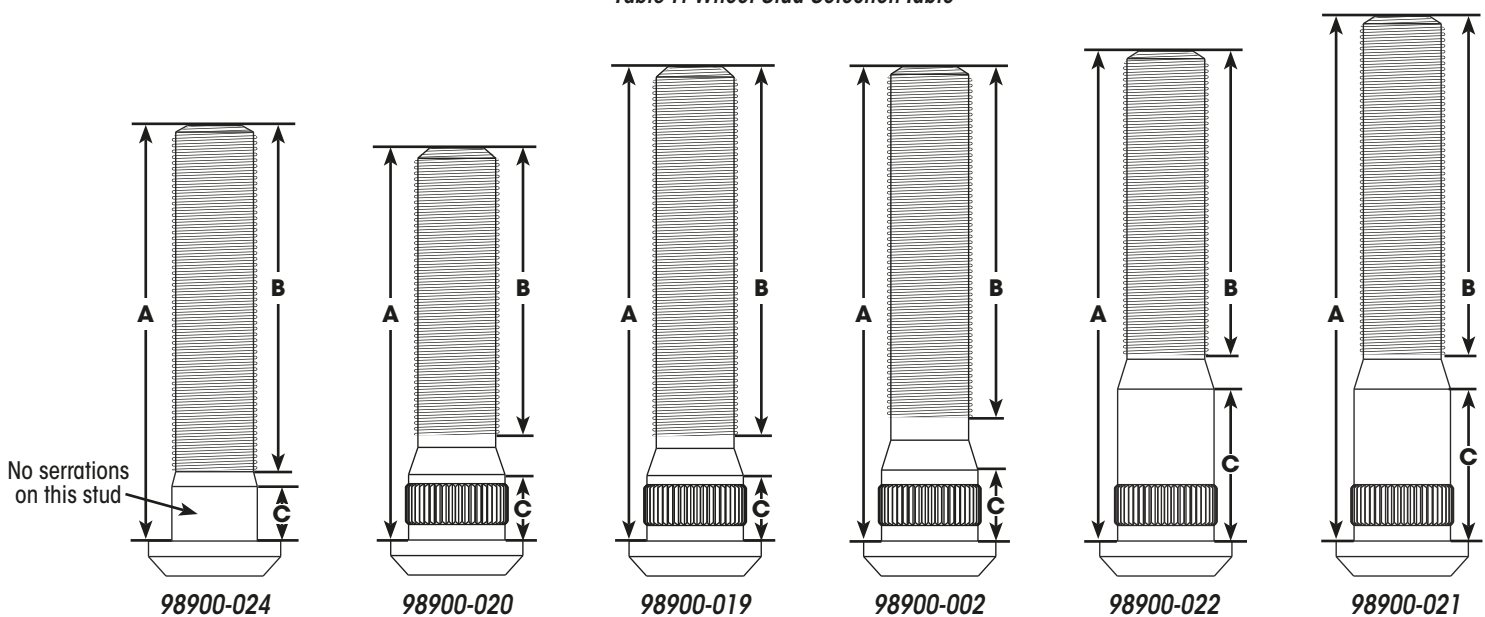
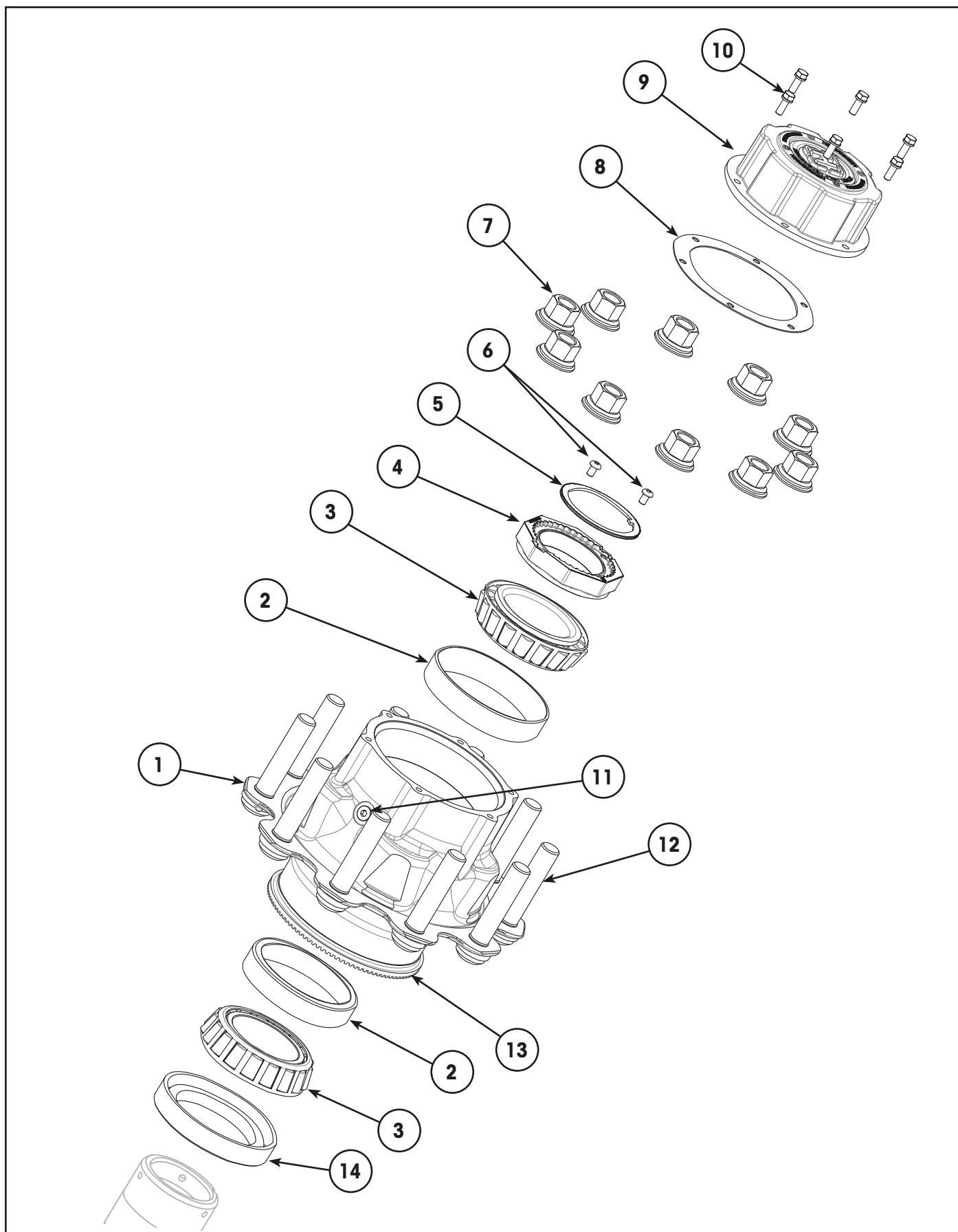


Figure 9: Wheel Stud Comparison

WHEEL END COMPONENTS

HXL7® HP DRUM BRAKE WHEEL END – 19.5 & 22.5

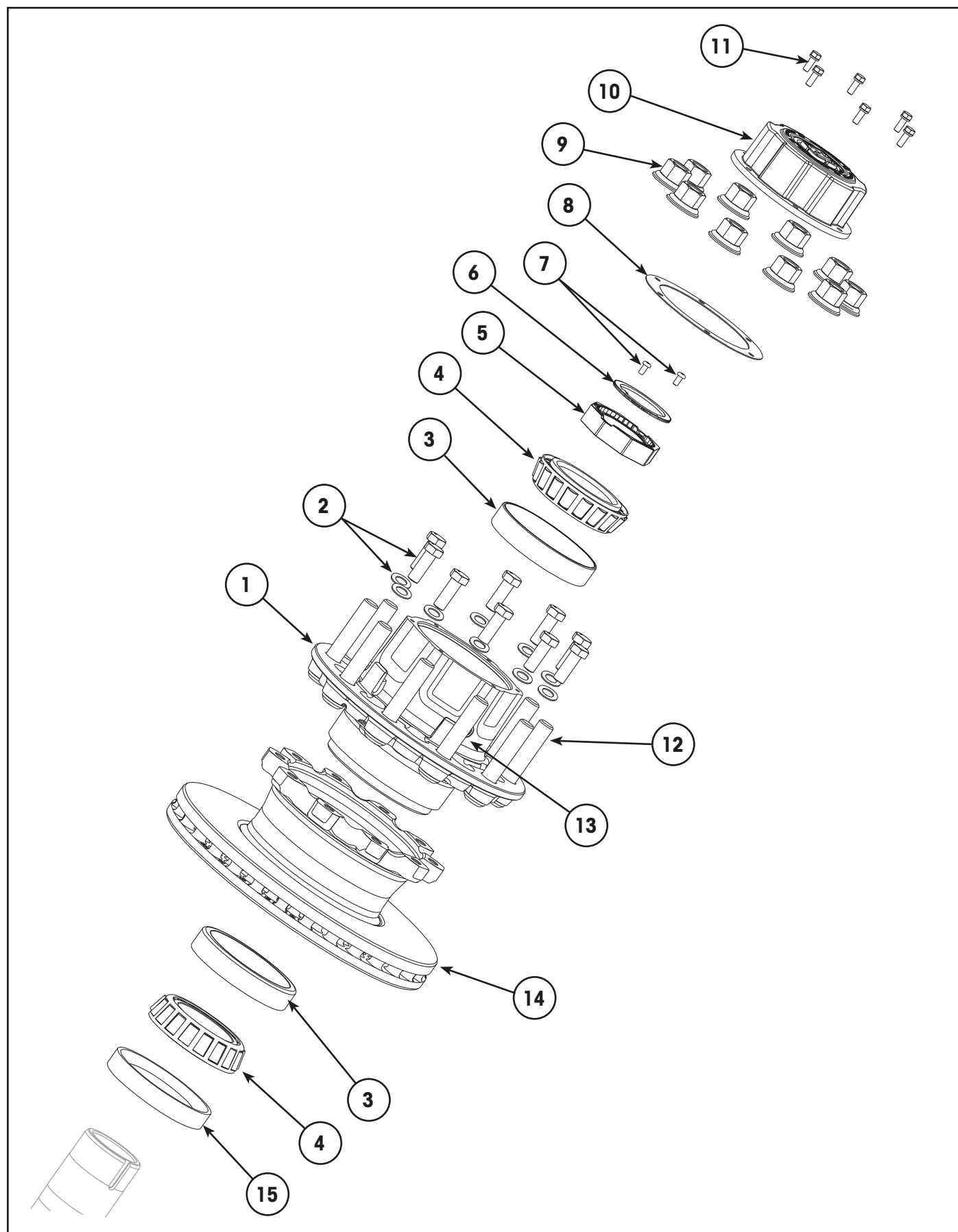




HXL7® HP DRUM BRAKE WHEEL END – 19.5 & 22.5

Item	Part Number	Description	Qty	Notes
1	NSS	Hub	1	Use hub replacement kit – item 17.
2	NSS	Bearing Cup	2	Use item 15 or 17.
3	NSS	Bearing Cone	2	
4	NSS	Spindle Nut – PRECISION320™	1	Use item 16.
5	NSS	Washer, Interlock – PRECISION320	1	
6	SA-14400-1	Cap Screw, Button Head	2	Included in item 16.
7	A-24695	Nut Wheel – M22 x 1.5 – Standard	10	Without spacer.
	98817-005	Nut Wheel, Long – M22 x 1.5 – Optional	10	With spacer.
8	A-32097	Gasket, Hubcap	1	Included in items 15 & 17.
9	–	Refer to “Hubcaps” on page 32	1	
10	98879-004	Bolt & Washer, Hubcap – 5/16” UNC x 7/8”	6	Suits 285 PCD hub. Includes washer.
	98879-002	Bolt, Hubcap – M8 x 1.25 x 20	6	Suits 335 PCD hub. Use washer & bolt together.
	SA-1600-7	Washer, lock – 5/16”	6	
11	98934-065	Filler Plug – 9/16”-18 UNF, Aluminium & ADI Hub	1	Included in item 17.
	SA-2300-2	Filler Plug – 3/8”-18 NPTF, Ductile Iron Hub	1	
12	98900-024	Stud – ADI 285 PCD M22 x 1.5 x 105 mm	10	Included in item 17. For stud identification refer to “Wheel Stud Selection” on page 5.
	98900-019	Stud – Ductile Iron 335 PCD M22 x 1.5 x 122 mm	10	
	98900-021	Stud – Aluminium 275/285 PCD M22 x 1.5 x 135 mm	10	275, 285 & early. For stud identification refer to “Wheel Stud Selection” on page 5.
13	98814-003	Pulse Ring, ABS – Aluminium 275 PCD Hub	1	Included in item 17.
	98814-020	Pulse Ring, ABS – ADI 285 PCD Hub	1	
	98814-009	Pulse Ring, ABS – Ductile Iron 335 PCD Hub	1	
14	A-27268	Seal, Hub Mounted	1	Included in items 15 & 17. Special tool required.
15	98801-075	Bearing Rebuild Kit (Not Illustrated)	1	Includes bearings, gasket & seal – items 2, 3, 8 & 14.
16	S-32844/2	Spindle Nut Kit (Not Illustrated)	1	Includes nut, washer & cap screws – items 4, 5 & 6.
17	98818-070	Hub Replacement Kit – Aluminium, 8 Stud 275 PCD	1	Kit includes hub, bearings, spindle nut, gasket & seal – items 1, 2, 3, 4, 5, 6, 8, 11, 12, 13 & 14. (Not illustrated)
	98818-049	Hub Replacement Kit – ADI, 10 Stud 285 PCD	1	
	98818-061	Hub Replacement Kit – Ductile Iron, 10 Stud 335 PCD	1	

HXL7® HP DISC BRAKE WHEEL END – 22.5

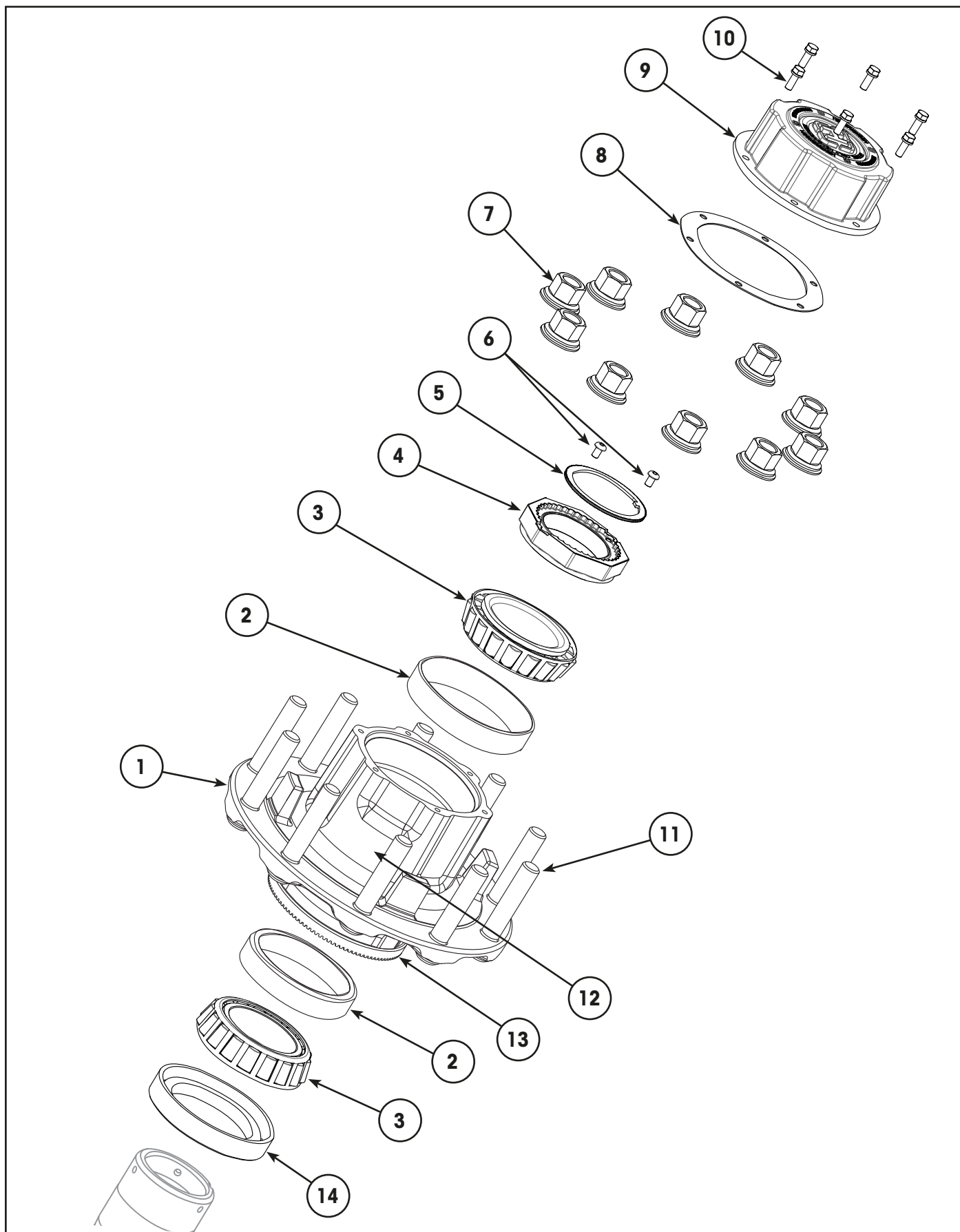




HXL7® HP DISC BRAKE WHEEL END – 22.5

Item	Part Number	Description	Qty	Notes
1	C-33387-8	Hub Assembly – Ductile Iron, 10 Stud 285 PCD	1	Includes bearing cups, studs & fill plug – items 3, 12 & 13. Included in item 18.
	C-33883-6	Hub Assembly – Ductile Iron, 10 Stud 335 PCD	1	
2	98881-108	Kit, Bolt & Washer Hub to Rotor – Zinc M16x2x45	1	Included in items 14 & 18.
3	NSS	Bearing Cup	2	Use item 17. Also included in items 1 & 18.
4	NSS	Bearing Cone	2	Use item 17. Also included in item 18.
5	NSS	Spindle Nut – PRECISION320™	1	Use item 16. Also included in item 18.
6	NSS	Washer, Interlock – PRECISION320	1	Use item 16. Also included in item 18.
7	SA-14400-1	Cap Screw, Button Head	2	Included in items 16 & 18.
8	A-32097	Gasket, Hubcap	1	Included in items 18 & 18.
9	A-24695	Nut Wheel – M22 x 1.5 – Standard	10	Without spacer.
	98817-005	Nut Wheel, Long – M22 x 1.5 – Optional	10	With spacer.
10	–	Refer to “Hubcaps” on page 32	1	
11	98879-004	Bolt & Washer, Hubcap – 5/16” UNC x 7/8”	6	Suits 285 PCD hub. Includes washer.
	98879-002	Bolt, Hubcap – M8 x 1.25 x 20	6	Suits 335 PCD hub.
	SA-1600-7	Washer, lock – 5/16”	6	Use washer & bolt together.
12	98900-019	Stud, Wheel – M22 x 1.5 x 122 mm	10	Included in items 1 & 18. For stud identification refer to “Wheel Stud Selection” on page 5.
13	SA-2300-2	Filler Plug – 3/8” -18 NPTF	1	Included in items 1 & 18.
14	98815-027	Rotor Kit, Disc Brake – 415 mm MAXX22T™ HTD-415™	1	Includes mounting hardware, item 2. Included in item 18.
	98815-033	Rotor Kit, Disc Brake – 430 mm KIC	1	Refer to Brake Parts list 97114-097 .
15	A-27268	Seal, Hub Mounted	1	Included in items 17 & 18.
16	S-32844/2	Spindle Nut Kit (Not Illustrated)	1	Includes nut, washer & cap screws – items 5, 6 & 7.
17	98801-075	Bearing Rebuild Kit (Not Illustrated)	1	Includes bearings, gasket & seal – items 3, 4, 8 & 15.
18	98818-062	MAXX22T™ HTD-415™ 415 mm Rotor & Hub Replacement Kit, 10 St. 285 PCD (Not Illustrated)	1	Kit includes hub with rotor, hub nut, gasket, bearings & fasteners – items 1, 2, 4, 5, 6, 7, 8, 14 & 15.
	98818-063	MAXX22T™ HTD-415™ 415 mm Rotor & Hub Replacement Kit, 10 St. 335 PCD (Not Illustrated)	1	
	98818-069	HXL7® 430 mm Rotor & Hub Assembly 10 Stud 335 PCD (Not Illustrated)	1	Fully assembly rotor and hub assembly, includes items 1, 2 & 14. Use with bearing rebuild kit, item 17.

HXL2™ & HXL5® HP DRUM BRAKE WHEEL END – 22.5





HXL2™ & HXL5® HP DRUM BRAKE WHEEL END – 22.5

Item	Part Number	Description	Qty	Notes
1	NSS	Hub	1	Use complete hub kit – item 17.
2	NSS	Bearing Cup	2	Use item 15 or 17.
3	NSS	Bearing Cone	2	
4	NSS	Spindle Nut – PRECISION320™	1	Use item 16.
5	NSS	Washer, Interlock – PRECISION320	1	
6	SA-14400-1	Cap Screw, Button Head	2	Included in item 16.
7	A-24695	Nut Wheel – M22 x 1.5 – Standard	10	Without spacer.
	98817-005	Nut Wheel, Long – M22 x 1.5 – Optional	10	With spacer.
8	A-32097	Gasket, Hubcap	1	Included in items 15 & 17.
9	–	Refer to <u>“Hubcaps” on page 32</u>	1	
10	98879-004	Bolt & Washer, Hubcap – 5/16” UNC x 7/8”	6	Suits 285 PCD hub. Includes washer.
	98879-002	Bolt, Hubcap – M8 x 1.25 x 20	6	Suits 335 PCD hub.
	SA-1600-7	Washer, lock – 5/16”	6	Use washer & bolt together.
11	98900-024	Stud – ADI Hub 285 PCD M22 x 1.5 x 105 mm	10	Included in item 17.
	98900-019	Stud – Aluminium 335 PCD M22 x 1.5 x 122 mm	10	For stud identification refer to <u>“Wheel Stud Selection” on page 5.</u>
12	98934-065	Filler Plug – 9/16”-18 UNF, ADI Hub	1	Included in item 17.
	SA-2300-2	Filler Plug – 3/8”-18 NPTF, Ductile Iron Hub	1	
13	98814-020	Pulse Ring, ABS – ADI 285 PCD Hub	1	Included in item 17.
	98814-009	Pulse Ring, ABS – Ductile Iron 335 PCD Hub	1	
14	A-27268	Seal, Hub Mounted	1	Included in items 15 & 17. Special tool required.
15	98801-075	Bearing Rebuild Kit (Not Illustrated)	1	Includes bearings, gasket & seal – items 2, 3, 8 & 14.
16	S-32844/2	Spindle Nut Kit (Not Illustrated)	1	Includes nut, washer & cap screws – items 4, 5 & 6.
17	98818-059	Hub Replacement Kit – ADI, 10 Stud 285 PCD	1	Kit includes hub, bearings, hub nut, gasket & seal – items 1, 2, 3, 4, 5, 6, 8, 11, 12, 13 & 14. (Not illustrated)
	98818-060	Hub Replacement Kit – Ductile Iron, 10 Stud 335 PCD	1	

This diagram illustrates the assembly of a mechanical component, likely a pump or valve, using 16 numbered parts. The components are as follows:

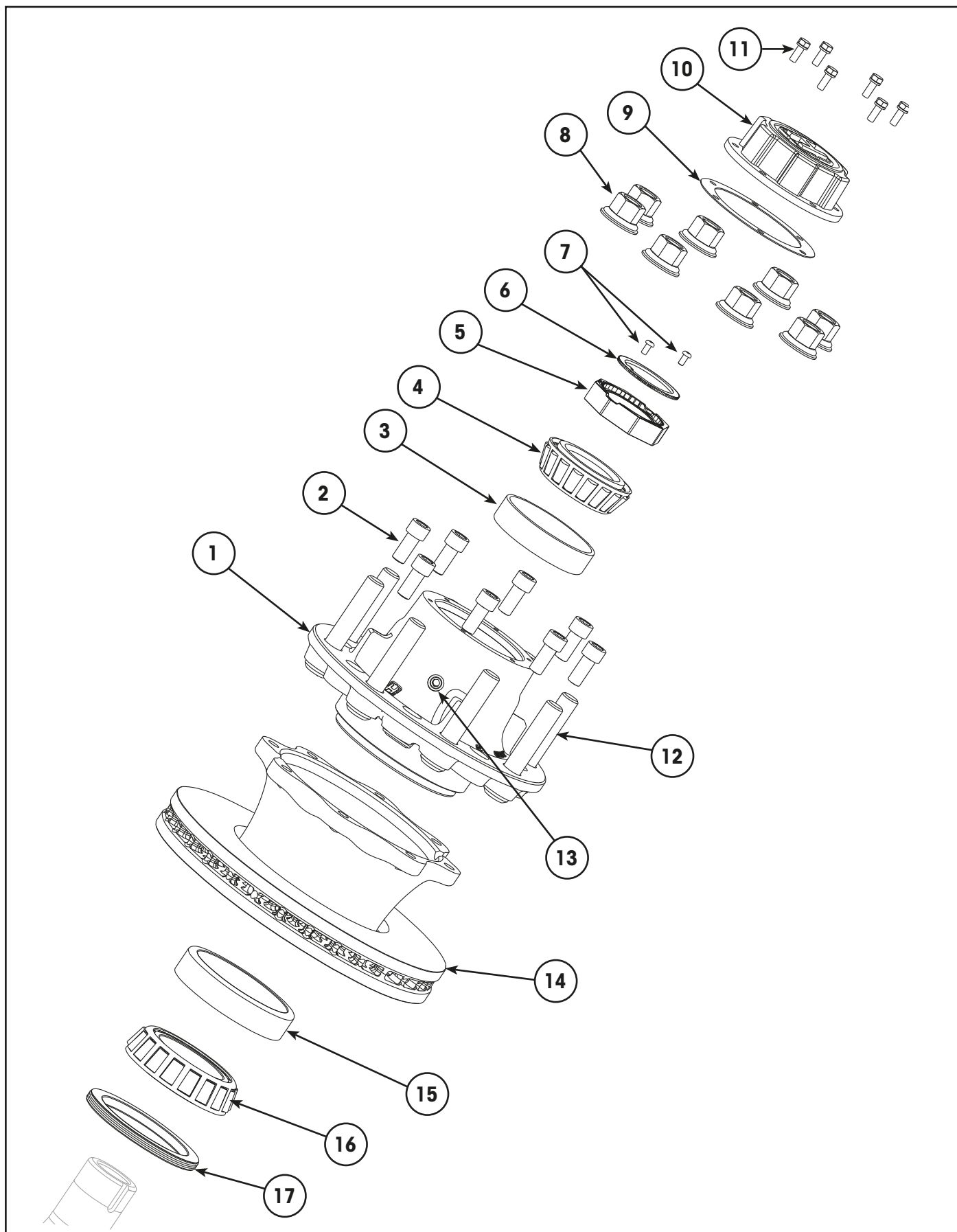
- 1**: Main body or housing.
- 2**: A large, flanged ring or flange.
- 3**: A smaller ring or flange.
- 4**: A small, circular gasket or seal.
- 5**: A small, circular gasket or seal.
- 6**: A small, circular gasket or seal.
- 7**: A small, circular gasket or seal.
- 8**: A large, circular flange or cover plate.
- 9**: A small, circular gasket or seal.
- 10**: A small, circular gasket or seal.
- 11**: A small, circular gasket or seal.
- 12**: A small, circular gasket or seal.
- 13**: A small, circular gasket or seal.
- 14**: A small, circular gasket or seal.
- 15**: A small, circular gasket or seal.
- 16**: A small, circular gasket or seal.

The diagram shows the assembly sequence, with arrows indicating the direction of assembly. The main body (1) is the central component, and the other parts are shown being attached to it. The flanges (2, 3, 8) and gaskets (4, 5, 6, 7, 9, 10, 11, 12, 13, 14, 15, 16) are used to seal the assembly.

**HXL2™ & HXL5® HN DRUM BRAKE WHEEL END – 22.5**

Item	Part Number	Description	Qty	Notes
1	NSS	Hub	1	Use complete hub kit – item 19.
2	NSS	Bearing Cup, Outer	1	Use item 18 or 19.
3	NSS	Bearing Cone, Outer	1	Use item 18 or 19.
4	NSS	Spindle Nut – PRECISION240®	1	Use item 17. Also included in item 19.
5	NSS	Washer, Interlock – PRECISION240	1	
6	SA-14400-2	Cap Screw – Button Head, 1/4" -20 x 1/2"	2	Included in items 17 & 19.
7	A-24695	Nut Wheel – M22 x 1.5 – Standard	10	Without spacer.
	98817-005	Nut Wheel, Long – M22 x 1.5 – Optional	10	With spacer.
8	A-32098	Gasket, Hubcap	1	Included in items 18 & 19.
9	–	Refer to <u>"Hubcaps" on page 32</u>	1	
10	98879-004	Bolt & Washer, Hubcap – 5/16" UNC x 7/8"	6	Suits 285 PCD hub. Includes washer.
	98879-002	Bolt, Hubcap – M8 x 1.25 x 20	6	Suits 335 PCD hub. Use washer & bolt together.
	SA-1600-7	Washer, lock – 5/16"	6	
11	98900-024	Stud – ADI Hub 285 PCD M22 x 1.5 x 105 mm	10	Included in item 19. For stud identification refer to <u>"Wheel Stud Selection" on page 5.</u>
	98900-019	Stud – Aluminium 335 PCD M22 x 1.5 x 122 mm	10	
12	98934-065	Filler Plug – 9/16" -18 UNF, ADI & Aluminium Hub	1	Included in item 19.
13	98814-020	Pulse Ring, ABS – 285 PCD ADI Hub	1	Included in item 19.
	98814-009	Pulse Ring, ABS – 335 PCD Aluminium Hub	1	
14	NSS	Bearing Cup, Inner	1	Use item 18 or 19.
15	NSS	Bearing Cone, Inner	1	Use item 18 or 19.
16	S-27267	Seal, Hub Mounted	1	Included in items 18 & 19. Special tool required.
17	S-33332/2	Spindle Nut Kit	1	Includes nut, washer & cap screws – items 4, 5 & 6.
18	98801-074	Bearing Rebuild Kit	1	Includes bearings, gasket & seal – items 2, 3, 8, 14, 15 & 16.
19	98818-064	Hub Replacement Kit – ADI, 10 Stud 285 PCD	1	Includes hub, bearings, hub nut, gasket & seal – items 1, 2, 3, 4, 5, 6, 8, 11, 12, 13, 14, 15 & 16. (Not illustrated)
	98818-065	Hub Replacement Kit – Aluminium, 10 Stud 335 PCD	1	

HXL2™ & HXL5® HN DISC BRAKE WHEEL END – 19.5 & 22.5

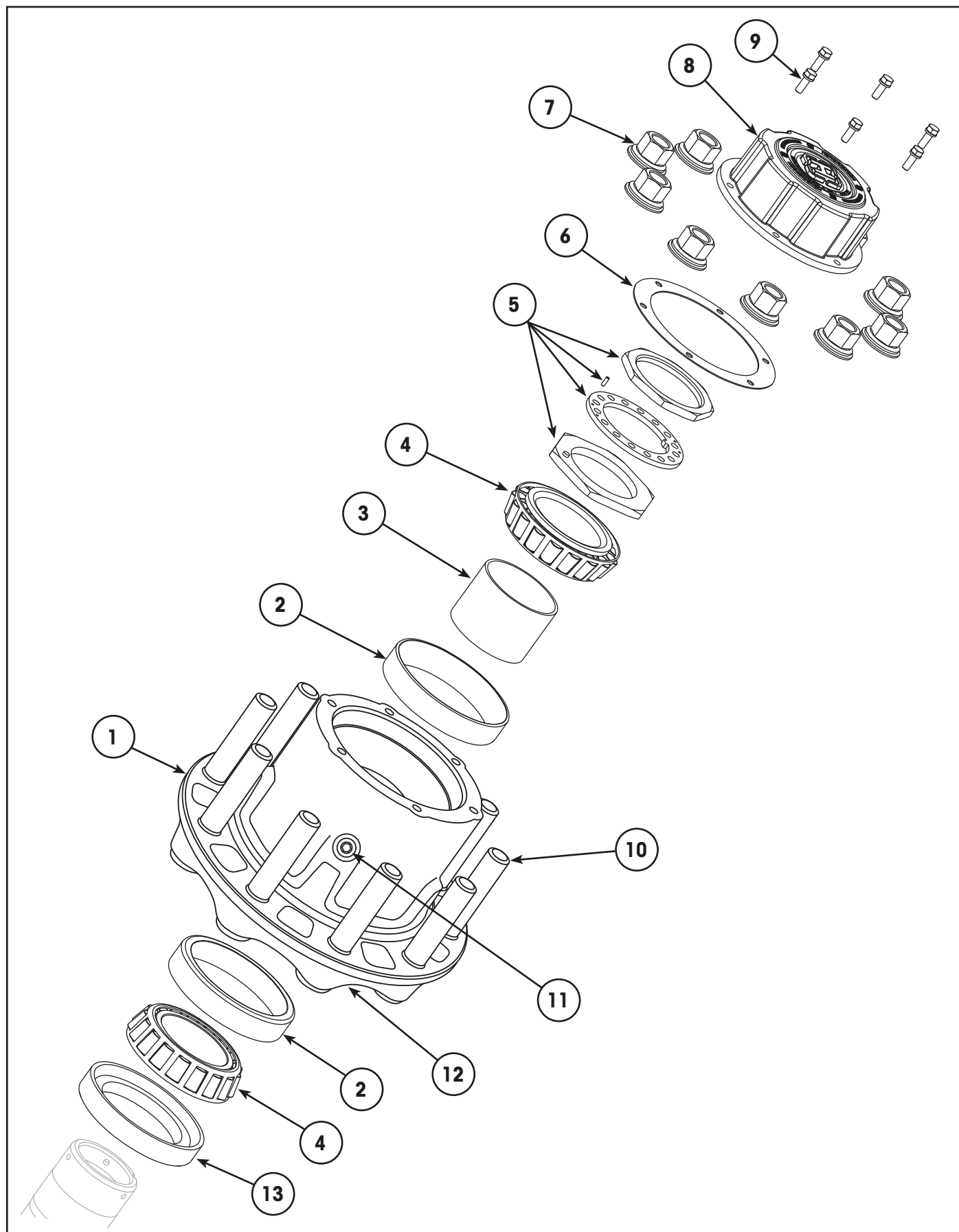




HXL2™ & HXL5® HN DISC BRAKE WHEEL END – 19.5 & 22.5

Item	Part Number	Description	Qty	Notes
1	NSS	Hub	1	Use hub replacement kit, item 20.
2	98881-107	Kit, Bolt Hub to Rotor – M16 x 2 x 35 mm – 377 mm rotor	1	Included in item 14 & 20.
	NSS	Nut, Hub to Rotor – Aluminium Hub with 430 mm rotor	10	Use item 14 or 20.
	98881-108	Kit, Bolt & Washer Hub to Rotor – Zinc M16 x 2 x 45 mm	1	Suits ductile iron hub with 430 mm rotor. Included in items 14 & 20.
3	NSS	Bearing Cup, Outer	1	Use item 18.
4	NSS	Bearing Cone, Outer	1	Also included in item 20.
5	NSS	Spindle Nut – PRECISION240®	1	Included in spindle nut kit and in hub rebuild kit, items 19 & 20.
6	NSS	Washer, Interlock – PRECISION240	1	
7	SA-14400-2	Cap Screw – Button Head, 1/4"-20 x 1/2"	2	
8	A-24695	Nut Wheel – M22 x 1.5 – Standard	10	Without spacer.
	98817-005	Nut Wheel, Long – M22 x 1.5 – Optional	10	With spacer.
9	A-32098	Gasket, Hubcap	1	Included in items 18 & 20.
10	–	Refer to "Hubcaps" on page 32	1	
11	98879-004	Bolt & Washer, Hubcap – 5/16" UNC x 7/8"	6	Suits 275 & 285 PCD hub.
	98879-002	Bolt, Hubcap – M8 x 1.25 x 20	6	Suits 335 PCD hub.
	SA-1600-7	Washer, lock – 5/16"	6	Use washer & bolt together.
12	98900-022	Stud, Wheel – Aluminium Hub M22 x 1.5 x 126 mm	10	Included in item 20.
	98900-019	Stud, Wheel – Ductile Iron Hub M22 x 1.5 x 122 mm	10	For stud identification refer to "Wheel Stud Selection" on page 5.
13	98934-065	Filler Plug – 9/16"-18 UNF, Aluminium Hub	1	Included in item 20.
	SA-2300-2	Filler Plug – 3/8"-18 NPTF, Ductile Iron Hub	1	
14	98815-032	Kit, Disc Brake Rotor & Hardware – 377 mm. Includes hardware item 3. Suits Ductile Iron Hub.	1	Included in item 20. Refer to Brake Parts list 97114-097 for more details.
	98815-031	Kit, 430 mm Rotor, includes ABS Ring & Hardware, Item 3. Suits ConMet Aluminium Hub	1	
	98815-033	Kit, 430 mm Rotor, includes ABS Ring & Hardware, Item 3. Suits Ductile Iron Hub.	1	
15	NSS	Bearing Cup, Inner	1	Use item 18.
16	NSS	Bearing Cone, Inner	1	Also included in item 20.
17	S-27267	Seal, Hub Mounted. Special tool required.	1	Included in item 18 & 20.
18	98801-074	Bearing Rebuild Kit	1	Includes bearings, gasket & seal – items 3, 4, 9, 15, 16 & 17.
19	S-33332/2	Spindle Nut Kit	1	Includes nut, washer & cap screws – items 5, 6 & 7.
20	98818-068	Rotor/Hub Replacement Kit, Ductile Iron Hub - 8 Stud 275 PCD, 377 mm rotor	1	Kit includes hub with rotor, hub nut, gasket, bearings & fasteners – items 1, 2, 3, 4, 5, 6, 7, 9, 12, 13, 14, 15, 16 & 17. (Not illustrated)
	98818-066	Rotor/Hub Replacement Kit, ConMet Aluminium Hub - 10 285 PCD, 430 mm rotor	1	
	98818-067	Rotor/Hub Replacement Kit, Ductile Iron Hub - 10 Stud 335 PCD, 430 mm rotor	1	

PRESET HP DRUM BRAKE WHEEL END – 22.5



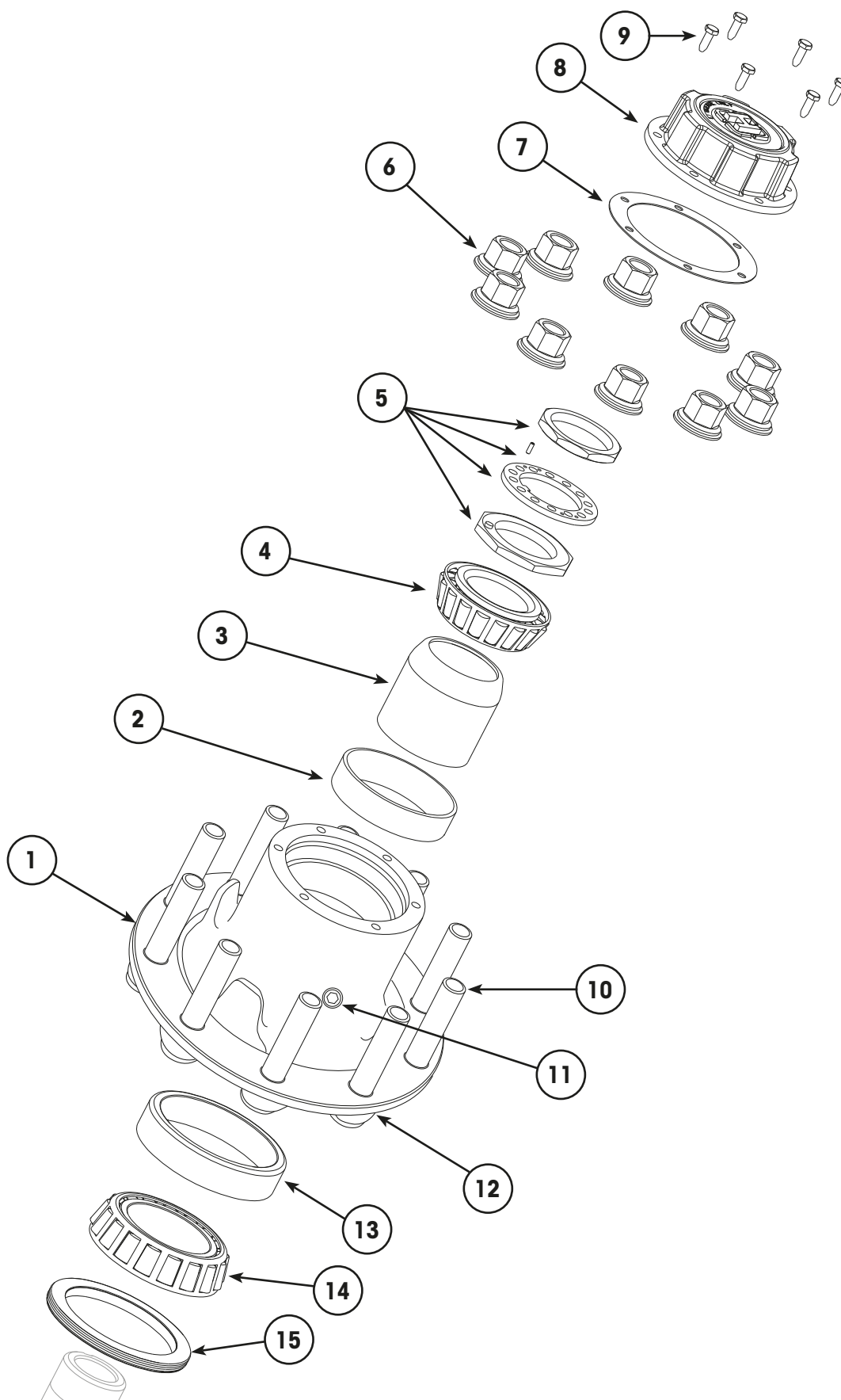


PRESET HP DRUM BRAKE WHEEL END – 22.5

Item	Part Number	Description	Qty	Notes
1	NSS	Hub	1	Use complete hub kit – item 16.
2	NSS	Bearing Cup	2	Use item 14. Also included in item 16.
3	NSS	PreSet Spacer	1	[1] Use item 15. Also included in items 14 & 16.
4	NSS	Bearing Cone	2	Use item 14. Also included in item 16.
5	S-20475	Spindle Nut Kit – HP	1	Services a complete axle. Includes 2 each of nuts, washer & set screw.
6	A-32097	Gasket, Hubcap	1	Included in items 14 & 16.
7	A-24695	Nut Wheel – M22 x 1.5 – Standard	10	Without spacer.
	98817-005	Nut Wheel, Long – M22 x 1.5 – Optional	10	With spacer.
8	–	Refer to “Hubcaps” on page 32	1	
9	98879-004	Bolt, Hubcap – 5/16” UNC x 7/8”	6	Includes washer.
10	98900-021	Stud, Wheel – M22 x 1.5 x 135 mm	10	Included in item 16 For stud identification refer to “Wheel Stud Selection” on page 5.
11	98934-065	Filler Plug – 9/16”-18 UNF	1	Included in item 16.
12	98814-003	Pulse Ring, ABS	1	Included in item 16.
13	A-27268	Seal, Hub Mounted. Use of item 15 is recommended.	1	[1] Included in items 15 & 16.
14	97098-003	Bearing Rebuild Kit with Bearings, Spacer & Seal. (Not Illustrated)	1	[1] Includes bearings, spacer, gasket & seal – items 2, 3, 4, 6 & 13.
15	97097-031	Spacer & Seal Kit, HP PreSet. (Not Illustrated)	1	[1] Includes spacer & seal – items 3 & 13.
16	98818-057	Hub Kit – Aluminium, 10 Stud 285 PCD. (Not Illustrated)	1	[1] Includes hub, bearings, spacer & seal – items 1, 2, 3, 4, 10, 11, 12 & 13.

[1] NOTE: Hendrickson recommend the use of a new PreSet bearing spacer when replacing hub seal.

PRESET HN DRUM BRAKE WHEEL END – 19.5 & 22.5





PRESET HN DRUM BRAKE WHEEL END – 19.5 & 22.5

Item	Part Number	Description	Qty	Notes
1	NSS	Hub	1	Use hub replacement kit – item 18.
2	NSS	Bearing Cup, Outer	1	Use item 16. Also included in item 18.
3	NSS	PreSet HN Spacer	1	[1] Use item 17. Also included in items 16 & 18.
4	NSS	Bearing Cone, Outer	1	Use item 16. Also included in item 18.
5	A-20492	Spindle Nut Kit – HN	1	Serves a complete axle. Includes 2 each of nuts, washer & set screw.
6	A-24695	Nut Wheel – M22 x 1.5 – Standard	10	Without spacer.
	98817-005	Nut Wheel, Long – M22 x 1.5 – Optional	10	With spacer.
7	A-32098	Gasket, Hubcap	1	
8	–	Refer to “Hubcaps” on page 32	1	
9	98879-004	Bolt & Washer, Hubcap – 5/16” UNC x 7/8”	6	Suits 275 & 285 PCD Hub. Includes washer.
	98879-002	Bolt, Hubcap – M8 x 1.25 x 20	6	Suits 335 PCD Hub.
	SA-1600-7	Washer, lock – 5/16”	6	Use washer & bolt together.
10	98900-002	Stud, Wheel – M22 x 1.5 x 125 mm	10	Included in item 18. For stud identification refer to “Wheel Stud Selection” on page 5.
11	98934-065	Filler Plug – 9/16”-18 UNF	1	Included in item 18.
12	98814-003	Pulse Ring, ABS	1	Suits 275 & 285 PCD hub. Included in item 18.
	98814-009	Pulse Ring, ABS	1	Suits 335 PCD hub. Included in item 18.
13	NSS	Bearing Cup, Inner	1	Use item 16. Also included in item 18.
14	NSS	Bearing Cone, Inner	1	
15	S-27267	Seal, Hub Mounted – Standard fitment.	1	[1] Special tool required. Included in items 17 & 18.
	98794-006	Seal, Hub Mounted – Hand Installed Option	1	[1] For hand installation.
16	97098-002	Bearing Rebuild Kit. (Not Illustrated)	1	[1] Includes bearings, spacer, gasket & seal – items 2, 3, 4, 7, 13, 14 & 15.
17	97097-030	Seal & Spacer Kit. (Not Illustrated)	1	[1] Includes seal & spacer – items 3 & 15.
18	98818-055	Hub Replacement Kit – Aluminium, 8 Stud 275 PCD	1	[1] Hub kit includes hub, bearings, spacer & seal – items 1, 2, 3, 4, 10, 11, 12, 13, 14 & 15. (Not Illustrated)
	98818-056	Hub Replacement Kit – Aluminium, 10 Stud 285 PCD	1	
	98818-058	Hub Replacement Kit – Aluminium, 10 Stud 335 PCD	1	

[1] NOTE: Hendrickson recommend the use of a new PreSet bearing spacer when replacing hub seal.

This exploded view diagram illustrates the assembly of a mechanical component, likely a pump or motor housing. The components are numbered 1 through 15:

- 1**: The main housing or base plate, featuring a central mounting flange and a series of mounting holes.
- 2**: A circular gasket or seal ring.
- 3**: A cylindrical component, possibly a sleeve or a bearing housing.
- 4**: A small, flanged ring or spacer.
- 5**: A set of three small, circular washers or spacers.
- 6**: A set of three small, cylindrical components, possibly O-rings or seals.
- 7**: A set of three small, cylindrical components, possibly O-rings or seals.
- 8**: A set of three small, cylindrical components, possibly O-rings or seals.
- 9**: A set of three small, cylindrical components, possibly O-rings or seals.
- 10**: A set of three small, cylindrical components, possibly O-rings or seals.
- 11**: A set of three small, cylindrical components, possibly O-rings or seals.
- 12**: A set of three small, cylindrical components, possibly O-rings or seals.
- 13**: A set of three small, cylindrical components, possibly O-rings or seals.
- 14**: A set of three small, cylindrical components, possibly O-rings or seals.
- 15**: A set of three small, cylindrical components, possibly O-rings or seals.



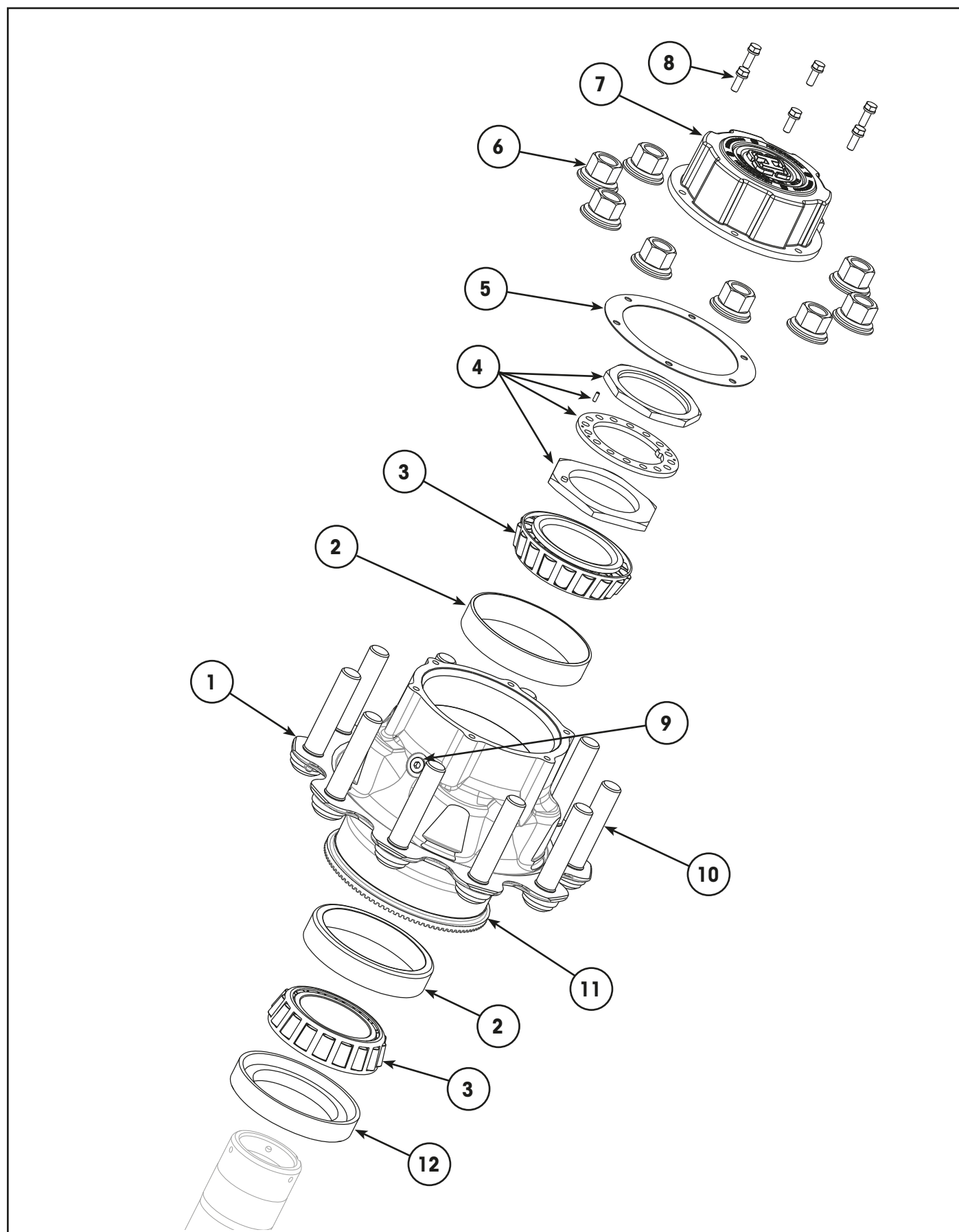
PRESET HN DISC BRAKE WHEEL END – 22.5

Item	Part Number	Description	Qty	Notes
1	NSS	Hub	1	Use hub replacement kit – item 18.
2	NSS	Bearing Cup, Outer	1	Use item 16. Also included in item 18.
3	NSS	PreSet HN Spacer	1	[1] Use item 16.
4	NSS	Bearing Cone, Outer	1	Use item 16. Also included in item 18.
5	A-20492	Spindle Nut Kit – HN	1	Serves a complete axle. Includes 2 each of nuts, washer & set screw.
6	A-24695	Nut Wheel – M22 x 1.5 – Standard	10	Without spacer.
	98817-005	Nut Wheel, Long – M22 x 1.5 – Optional	10	With spacer.
7	A-32098	Gasket, Hubcap	1	
8	–	Refer to <u>“Hubcaps” on page 32</u>	1	
9	98879-004	Bolt, Hubcap – 5/16” UNF x 7/8”	6	Includes washer.
10	98900-022	Stud, Wheel – M22 x 1.5 x 126 mm	10	Included in item 18. For stud identification refer to <u>“Wheel Stud Selection” on page 5</u> .
11	98934-065	Filler Plug – 9/16”-18 UNF	1	Included in item 18.
12	98814-025	ConMet ABS Tone Ring Kit – Early Up To 2018	2	[2] ConMet rotors. 10-bolt style.
	98814-024	ConMet ABS Tone Ring Kit – 2018 To 2019	2	[2] ConMet rotors. 5-bolt style.
	98814-026	ConMet ABS Tone Ring Kit – From 2019	2	[2] ConMet rotors. Locking circlip style. Includes circlip.
13	NSS	Bearing Cup, Inner	1	Use item 16. Also included in item 18.
14	NSS	Bearing Cone, Inner	1	
15	S-27267	Seal, Hub Mounted – Standard fitment.	1	[1] Included in items 17 & 18. Special tool required.
	98794-006	Seal, Hub Mounted – Hand Installed Option	1	[1] For hand installation.
16	97098-002	Bearing Rebuild Kit. (Not Illustrated)	1	[1] Includes bearings, seal, gasket & spacer – items 2, 3, 4, 7, 13, 14, & 15.
17	97097-030	Seal & Spacer Kit. See Note. (Not Illustrated)	1	[1] Includes seal & spacer – items 3 & 15.
18	98801-076	Hub & 430 mm Rotor Assembly Replacement Kit - ConMet Aluminium Hub with Locking Circlip Style ABS Ring – 10 Stud 285	1	[2] Pre-assembled hub & rotor, with bearings, spacer & seal. Items 1, 2, 3, 4, 10, 11, 12, 13, 14 & 15. (Not Illustrated)

[1] NOTE: Hendrickson recommend the use of a new PreSet bearing spacer when replacing hub seal.

[2] NOTE: For more information regarding the brake rotor and/or the ABS pulse ring to suit HN disc brake PreSet wheel end, refer to Hendrickson [97117-097](#) Trailer Brake System Parts List.

CONVENTIONAL HP DRUM BRAKE WHEEL END – 22.5

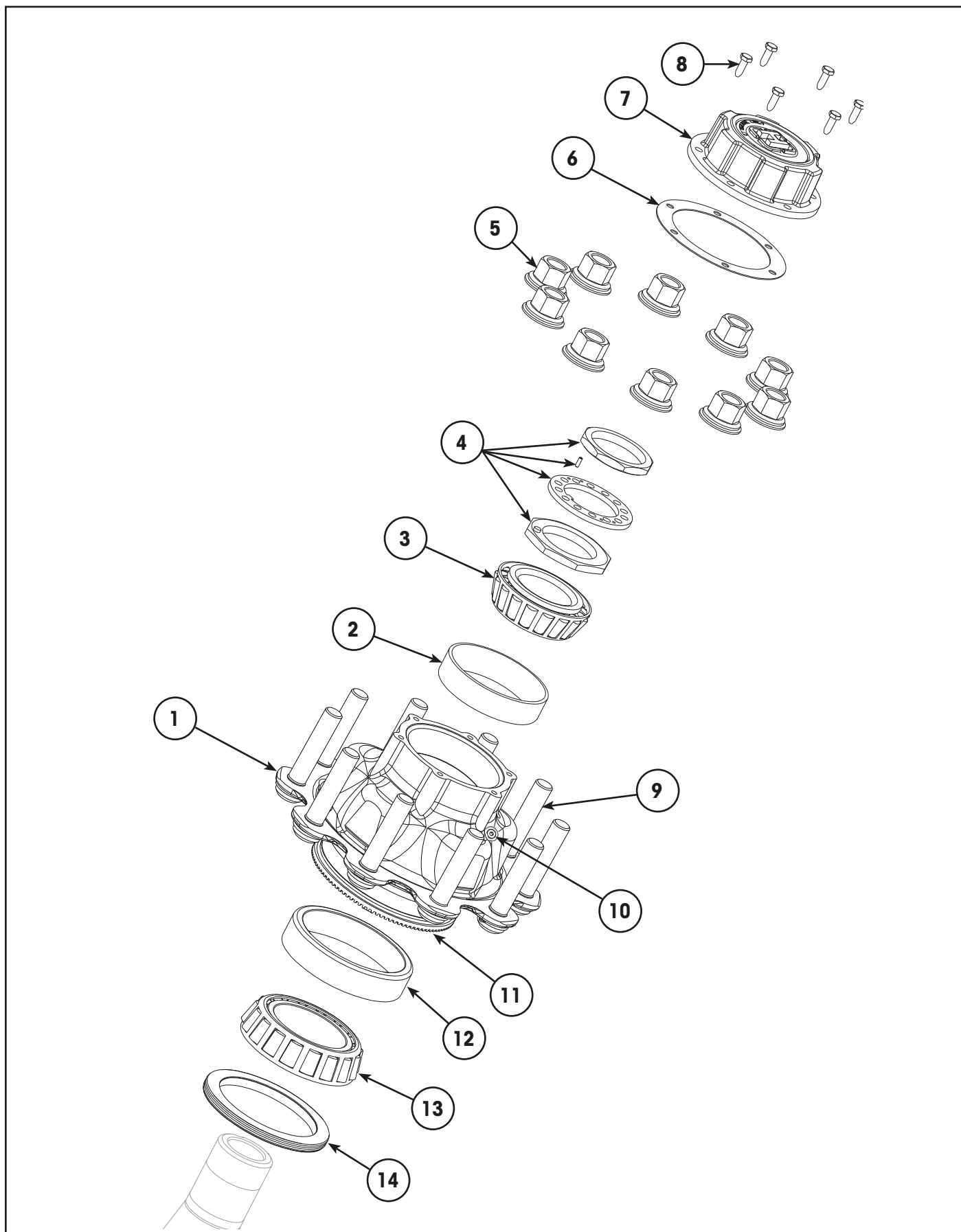




CONVENTIONAL HP DRUM BRAKE WHEEL END – 22.5

Item	Part Number	Description	Qty	Notes
1	C-31905-6	Hub Assembly – ADI, 10 Stud 285 PCD	1	Includes items 1, 2, 9, 10 & 11.
	C-34758-3	Hub Assembly – Ductile Iron, 10 Short Stud 335 PCD Optional	1	
	C-34758-4	Hub Assembly – Ductile Iron, 10 Long Stud 335 PCD Standard	1	
2	NSS	Bearing Cup	2	Use item 13. Also included in item 1.
3	NSS	Bearing Cone	2	Use item 13.
4	S-20475	Spindle Nut Kit – HP	1	Serves a complete axle. Includes 2 each of nuts, washer & set screw.
5	A-32097	Gasket, Hubcap	1	Included in item 13.
6	A-24695	Nut Wheel – M22 x 1.5 – Standard	10	Without spacer.
	98817-005	Nut Wheel, Long – M22 x 1.5 – Optional	10	With spacer.
7	–	Refer to <u>“Hubcaps” on page 32</u>	1	
8	98879-004	Bolt & Washer, Hubcap – 5/16” UNC x 7/8”	6	Suits 285 PCD hub. Includes washer.
	98879-002	Bolt, Hubcap – M8 x 1.25 x 20	6	Suits 335 PCD hub.
	SA-1600-7	Washer, lock – 5/16”	6	Use washer & bolt together.
9	98934-065	Filler Plug – 9/16”-18 UNF, 285 PCD	1	Included in item 1.
	SA-2300-2	Filler Plug – 3/8”-18 NPTF, 335 PCD	1	
10	98900-024	Stud – ADI Hub 285 PCD M22 x 1.5 x 105 mm	10	Included in item 1. For stud identification refer to <u>“Wheel Stud Selection” on page 5.</u>
	98900-020	Stud – Ductile Iron Optional Short Stud M22 x 1.5 x 101 mm	10	
	98900-019	Stud – Ductile Iron Standard Long Stud M22 x 1.5 x 122 mm	10	
11	98814-020	Pulse Ring, ABS – 285 PCD	1	Suits 285 PCD ADI hub. Included in item 1.
	98814-009	Pulse Ring, ABS – 335 PCD	1	Suits 335 PCD iron hub. Included in item 1.
12	A-27268	Seal, Hub Mounted – Alternative Option.	1	Special tool required.
	98794-002	Seal, Spindle Mounted – Standard Fitment.	1	Special tool required. Included in item 13.
13	98800-011	Bearing Rebuild Kit (Not Illustrated)	1	Includes bearings, gasket & seal – items 2, 3, 5 & 12.

CONVENTIONAL HN DRUM BRAKE WHEEL END – 22.5

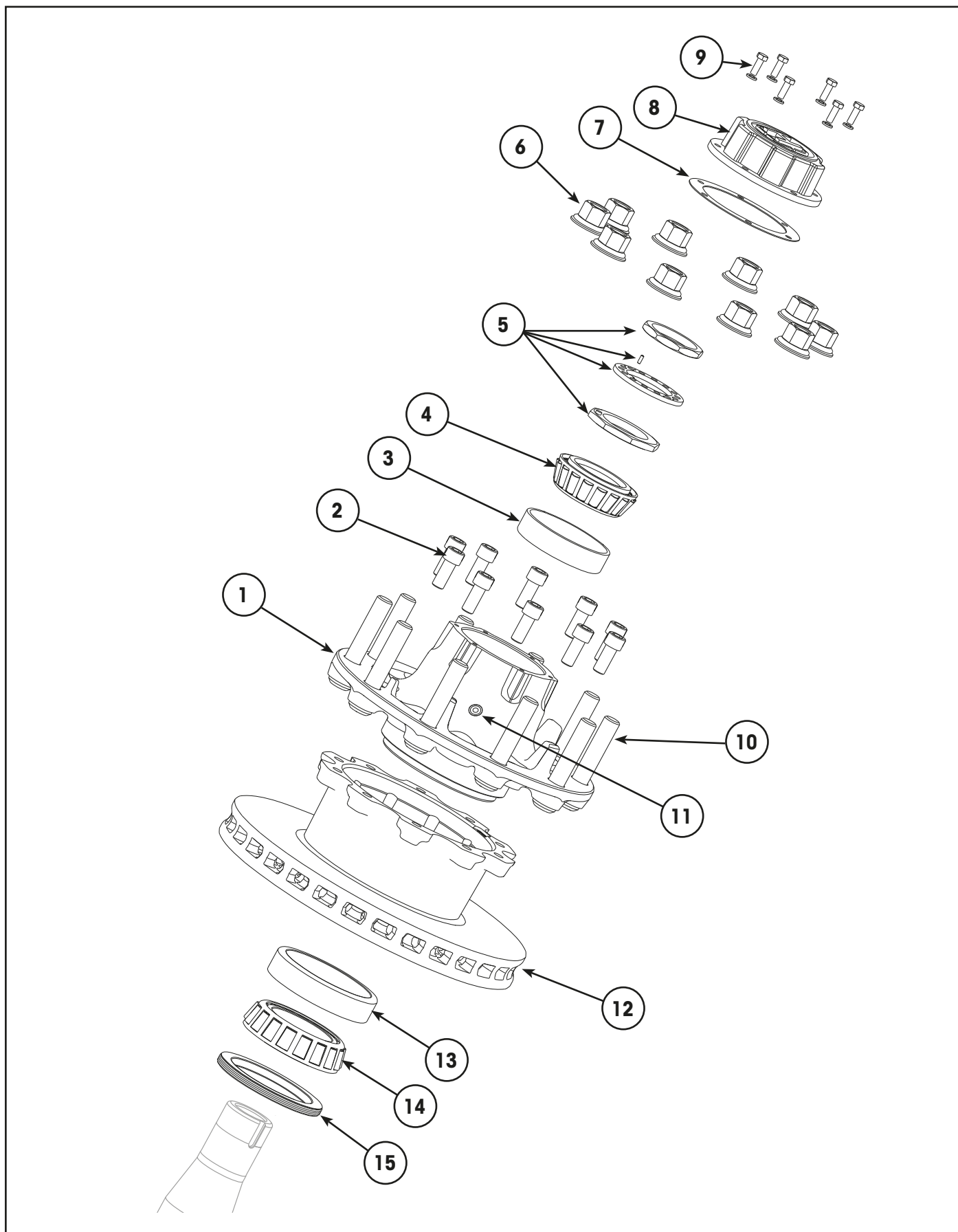




CONVENTIONAL HN DRUM BRAKE WHEEL END – 22.5

Item	Part Number	Description	Qty	Notes
1	C-31906-6	Hub Assembly – ADI, 10 Stud 285 PCD	1	Includes items 1, 2, 9, 10, 11 & 12.
	D-33466-4	Hub Assembly – Ductile Iron, 10 Stud 335 PCD	1	
2	NSS	Bearing Cup, Outer	1	Use item 15. Also included in item 1.
3	NSS	Bearing Cone, Outer	1	Use item 15.
4	A-20492	Spindle Nut Kit – HN	1	Services a complete axle. Includes 2 each of nuts, washer & set screw.
5	A-24695	Nut Wheel – M22 x 1.5 – Standard	10	Without spacer.
	98817-005	Nut Wheel, Long – M22 x 1.5 – Optional	10	With spacer.
6	A-32098	Gasket, Hubcap	1	Included in item 15.
7	–	Refer to “Hubcaps” on page 32	1	
8	98879-004	Bolt & Washer, Hubcap – 5/16” UNC x 7/8”	6	Suits 285 PCD hub. Includes washer.
	98879-002	Bolt, Hubcap – M8 x 1.25 x 20	6	Suits 335 PCD hub. Use washer & bolt together.
	SA-1600-7	Washer, lock – 5/16”	6	
9	98900-024	Stud – ADI Hub 285 PCD M22 x 1.5 x 105 mm	10	Included in item 1. For stud identification refer to “Wheel Stud Selection” on page 5.
	98900-019	Stud – Aluminium 335 PCD M22 x 1.5 x 122 mm	10	
10	98934-065	Filler Plug – 9/16”-18 UNF, 285 PCD	1	Included in item 1.
	SA-2300-2	Filler Plug – 3/8”-18 NPTF, 335 PCD	1	
11	98814-020	Pulse Ring, ABS – 285 PCD	1	Suits 285 PCD ADI hub. Included in item 1.
	98814-009	Pulse Ring, ABS – 335 PCD	1	Suits 335 PCD iron hub. Included in item 1.
12	NSS	Bearing Cup, Inner	1	Use item 15. Also included in item 1.
13	NSS	Bearing Cone, Inner	1	Use item 15.
14	98794-012	Seal, Spindle Mounted – Standard Fitment	1	Special tool required. Included in item 15.
	S-27267	Seal, Hub Mounted – Alternative Option	1	Special tool required.
	98794-006	Seal, Hub Mounted – Alternative Option	1	Hand installed.
15	98800-010	Bearing Rebuild Kit (Not Illustrated)	1	Includes bearings, gasket & seal – items 2, 3, 6, 12, 13 & 14.

CONVENTIONAL HN DISC BRAKE WHEEL END – 19.5 & 22.5



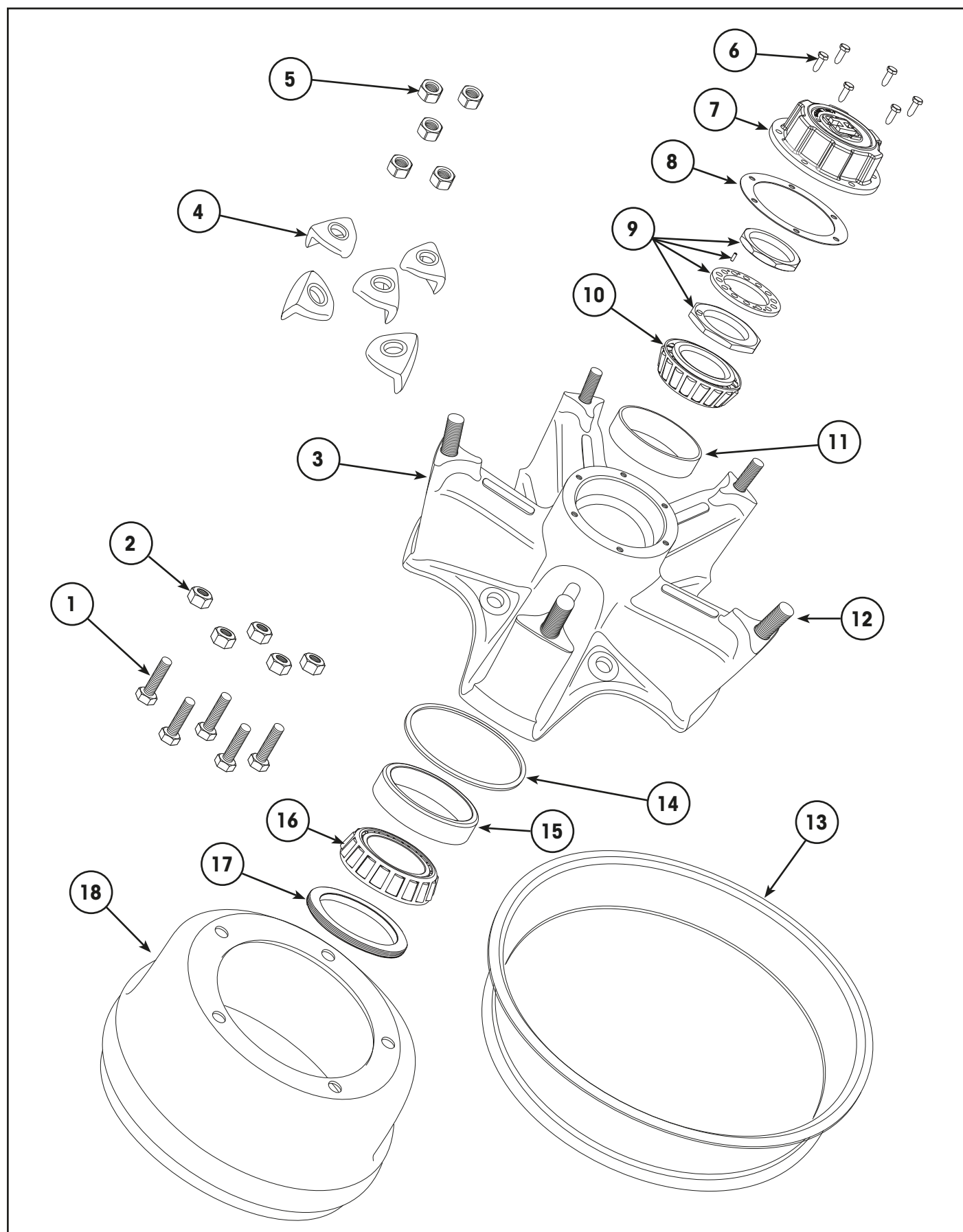


CONVENTIONAL HN DISC BRAKE WHEEL END – 19.5 & 22.5

Item	Part Number	Description	Qty	Notes
1	C-33414-4	Hub Assembly – Ductile Iron, 8 Stud 275 PCD	1	Includes items 3, 10, 11 & 14.
	C-33381-6	Hub Assembly – Ductile Iron, 10 Stud 335 PCD	1	
2	98881-107	Kit, Bolt Hub to Rotor – M16 x 2 x 35 mm	1	Suits 377 mm rotor. Included in item 12.
	98881-108	Kit, Bolt & Washer Hub to Rotor – Zinc M16x2x45	1	Suits 430 mm rotor. Included in item 12.
3	NSS	Bearing Cup, Outer	1	Use item 16. Also included in item 1.
4	NSS	Bearing Cone, Outer	1	Use item 16.
5	A-20492	Spindle Nut Kit – HN	1	Serves a complete axle. Includes 2 each of nuts, washer & set screw.
6	A-24695	Nut Wheel – M22 x 1.5 – Standard	10	Without spacer.
	98817-005	Nut Wheel, Long – M22 x 1.5 – Optional	10	With spacer.
7	A-32098	Gasket, Hubcap	1	Included in item 16.
8	–	Refer to “Hubcaps” on page 32	1	
9	98879-004	Bolt & Washer, Hubcap – 5/16” UNC x 7/8”	6	Suits 275 PCD hub. Includes washer.
	98879-002	Bolt, Hubcap – M8 x 1.25 x 20	6	Use washer & bolt together. Suits 335 PCD hub.
	SA-1600-7	Washer, lock – 5/16”	6	
10	98900-019	Stud, Wheel – M22 x 1.5 x 122 mm	10	Included in item 1 & 17. For stud identification refer to “Wheel Stud Selection” on page 5.
11	SA-2300-2	Filler Plug – 3/8”-18 NPTF	1	Included in item 1 & 17.
12	98815-032	Kit, Disc Brake Rotor & Hardware – 377 mm	1	Suits ductile iron hub. Incl. hardware, item 2.
	98815-033	Kit, Disc Brake Rotor & Hardware – 430 mm	1	Suits ductile iron hub. Incl. hardware, item 2.
13	NSS	Bearing Cup, Inner	1	Use item 16. Also included in items 1 & 17.
14	NSS	Bearing Cone, Inner	1	Use item 16.
15	98794-012	Seal, Spindle Mounted – Standard Fitment	1	Special tool required. Included in item 16.
	S-27267	Seal, Hub Mounted – Alternative Option	1	Special tool required.
	98794-006	Seal, Hub Mounted – Alternative Option	1	Hand installed.
16	98800-010	Bearing Rebuild Kit (Not Illustrated)	1	Includes bearings, gasket & seal – items 3, 4, 7, 13, 14 & 15.
17	C-33874-4	Hub & Rotor Kit - 8 Stud 275 PCD - 377 mm	1	Includes rotor, hub & hardware – items 1, 2, & 12. (Not Illustrated)
	C-34578-4	Hub & Rotor Kit - 10 Stud 335 PCD - 430 mm	1	

[1] NOTE: For more information regarding the brake rotor and/or the ABS pulse ring refer to Hendrickson [97117-097](#) Trailer Brake System Parts List.

CONVENTIONAL HN 5 SPOKE SPIDER WHEEL END – 22.5

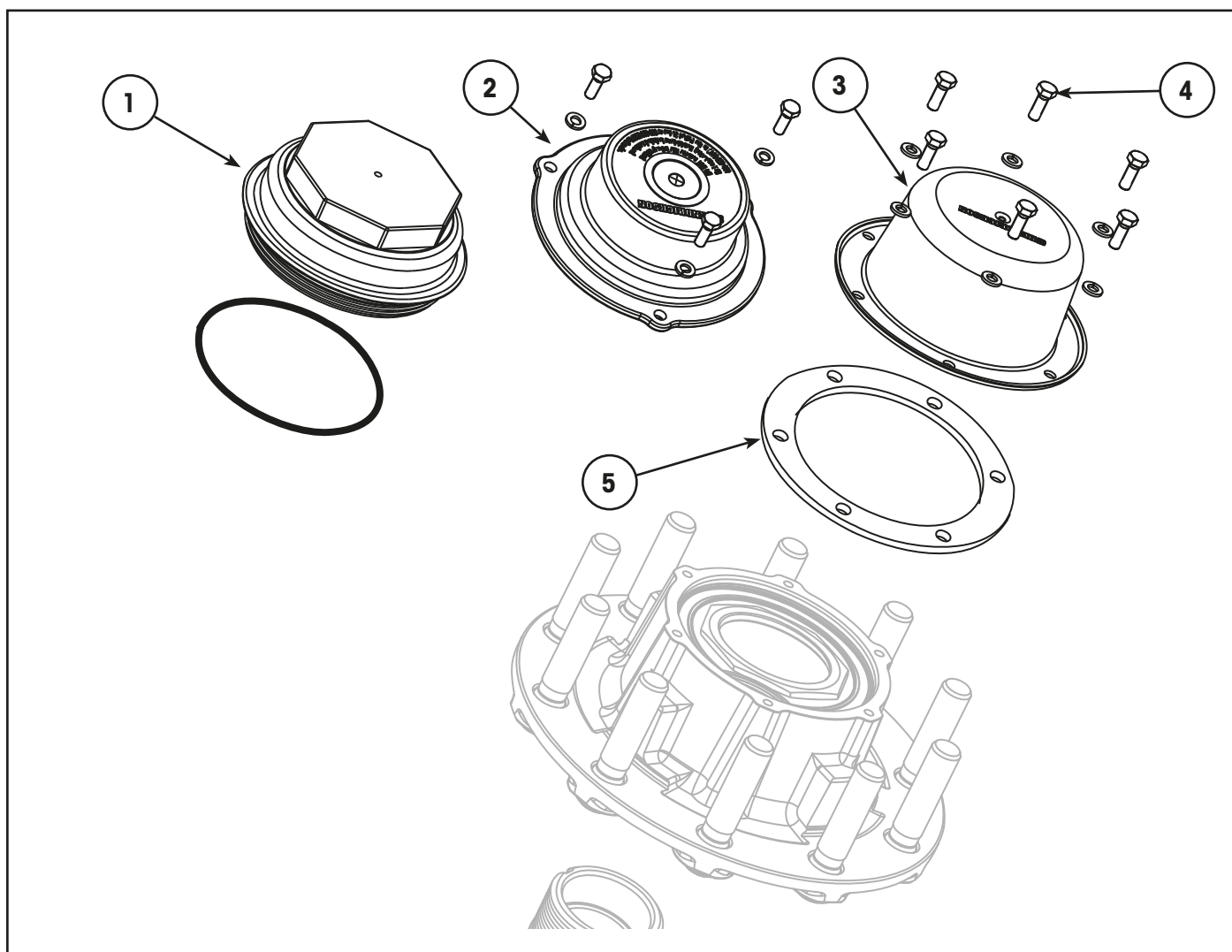




CONVENTIONAL HN 5 SPOKE SPIDER WHEEL END – 22.5

Item	Part Number	Description	Qty	Notes
1	98559-004	Bolt, Drum to Hub – 3/4"-16 UNF	5	Included in item 19.
2	97463-001	Nut, Drum to Hub – 3/4"-16 UNF	5	Included in item 19.
3	NSS	Hub, 5 Spoke – Iron, 16.5" x 7"	1	Use item 19.
4	NSS	Clamp, Wheel Rim	5	Use item 19.
5	97463-002	Nut, Wheel Rim – 3/4"-10 UNC	5	Included in item 19.
6	98879-004	Bolt, Hubcap – 5/16" UNC x 7/8"	6	Includes washer.
7	–	Refer to "Hubcaps" on page 32	1	
8	A-32098	Gasket, Hubcap	1	Included in item 20.
9	A-20492	Spindle Nut Kit – HN	1	Includes 2 each nuts, washers & set screws to suit 2 wheel ends.
10	NSS	Bearing Cone, Outer	1	Use item 20.
11	NSS	Bearing Cup, Outer	1	Use item 20. Also included in item 19.
12	98646-013	Stud, Wheel Rim – 3/4"-10 UNC x 3"	5	Included in item 19.
13	98947-013	Spacer, Wheel Rim – 20" x 4"	1	Included in item 19.
14	98814-009	ABS Tone Ring, 100 Tooth	1	Included in item 19.
15	NSS	Bearing Cup, Inner	1	Use item 20. Also included in item 19.
16	NSS	Bearing Cone, Inner	1	Use item 20.
17	98794-012	Seal, Spindle Mounted – Standard Fitment	1	Special tool required. Included in item 20.
	S-27267	Seal, Hub Mounted – Alternative Option	1	Special tool required.
	98794-006	Seal, Hub Mounted – Alternative Option	1	Hand installed.
18	98815-028	Brake Drum	1	Included in item 19.
19	98792-013	Hub & Drum Assembly, 5 Spoke – Iron, 16.5" X 7" (Not Illustrated)	1	Includes drum, hub & hardware – items 1, 2, 3, 4, 5, 11, 12, 13, 14, 15 & 18.
20	98800-010	Bearing Rebuild Kit (Not Illustrated)	1	Includes bearings, gasket & seal – items 8, 10, 11, 15, 16 & 17.

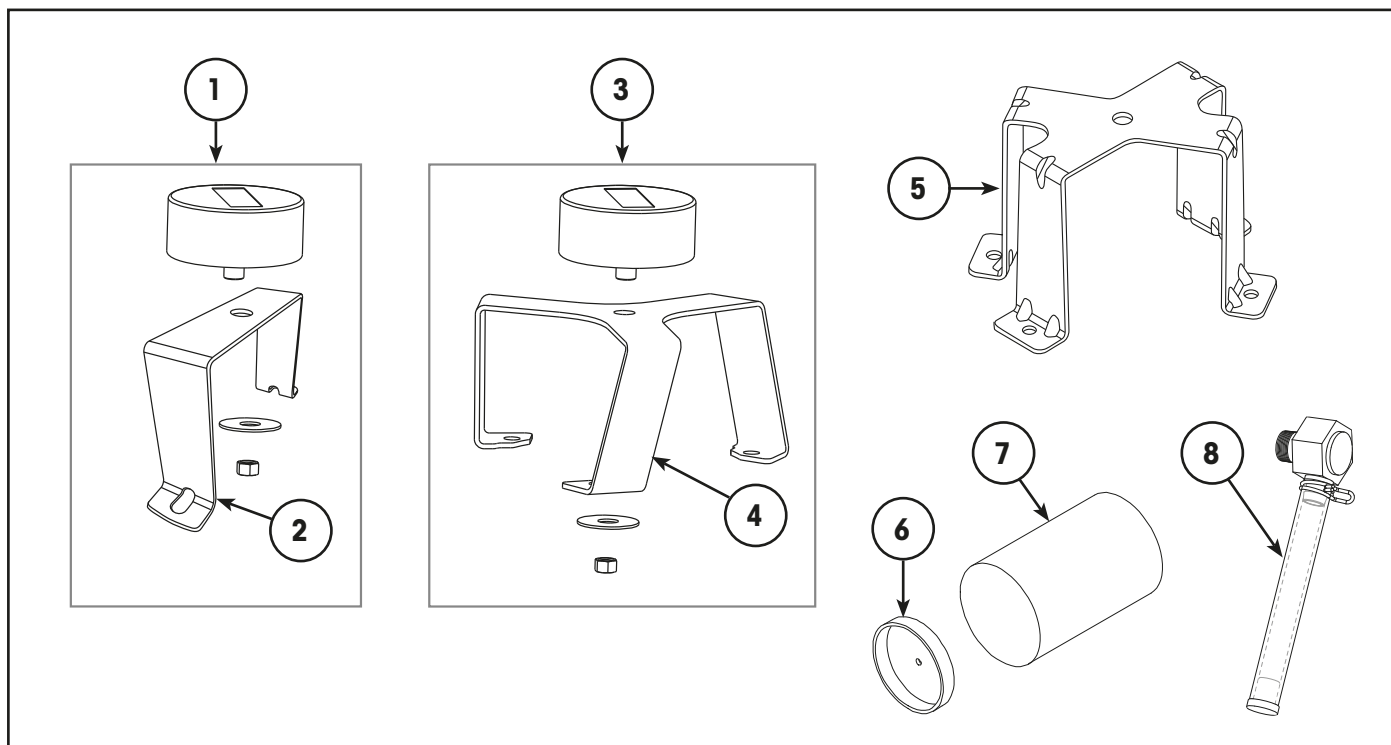
HUS™ DRUM BRAKE WHEEL END – 22.5



NOTICE: HUS™ hub service parts are no longer available through Hendrickson. Please contact Hendrickson to learn about the options available to upgrade your axle to a newer spindle design. Alternatively, contact SKF directly to source replacement hubs.

Item	Part Number	Description	Qty	Notes
1	NLA	Hubcap, Screw-on	1	Includes O-ring. Use 98846-005, refer page 33 .
2	S-29227-1	Hubcap, Standard 3 Bolt	1	Exc TIREMAAX™. Includes O-ring.
	S-29227-2	Hubcap, TIREMAAX™ 3 Bolt	1	TIREMAAX. Includes O-ring.
3	NLA	Hubcap, 6 Bolt	1	Can use S-32629-1. Refer page 33 .
4	98879-004	Bolt, Hubcap – 5/16" UNC x 7/8"	AR	Includes washer.
5	A-32097	Gasket, Hubcap	1	Suits 6-bolt hubcap

WHEEL END EXTRAS



Hubodometer

Item	Part Number	Description	Specification	Notes
1	98866-022	HN Spindle Hubo Assembly – 11R22.5	310 Revs/km	Includes bracket, nut & washer
	98866-030	HN Spindle Hubo Assembly – 385/55R22.5	332 Revs/km	
	98866-023	HN Spindle Hubo Assembly – 275/70R22.5	342 Revs/km	
	98866-024	HN Spindle Hubo Assembly – 255/70R22.5	357 Revs/km	
	98866-016	HN Spindle Hubo Assembly – 265/70R19.5	380 Revs/km	
2	98870-127	Bracket Only, Hubodometer – HN, Including TIREMAAX™ PRO		Hendrickson
	98870-072	Bracket Only, Hubodometer – HN, Excluding TIREMAAX™ PRO		New Zealand only
3	98866-011	HP Spindle Hubo Assembly – 11R22.5	310 Revs/km	Includes bracket, nut & washer
	98866-014	HP Spindle Hubo Assembly – 275/80R22.5	320 Revs/km	
	98866-031	HP Spindle Hubo Assembly – 385/55R22.5	332 Revs/km	
	98866-012	HP Spindle Hubo Assembly – 275/70R22.5	342 Revs/km	
	98866-013	HP Spindle Hubo Assembly – 255/70R22.5	357 Revs/km	
4	98870-182	Bracket Only, Hubodometer – HP, Including TIREMAAX PRO		Hendrickson
5	98870-174	Bracket Only, Hubodometer – HP Oil Hub 4-Prong		Stemco

Spindle End Plug & Filter

Item	Part Number	Description	Qty	Notes
6	A-22858	Plug, End – HN Spindle Without TIREMAAX	2	For TIREMAAX related parts refer to parts list 97114-116 .
	A-26191	Plug, End – HP Spindle Without TIREMAAX	2	
7	S-24217	Filter – Axle	2	Suits both HN & HP Spindles.
8	A-32101	Axle Vent Assembly	1	INTRAAX, CONNEX ST, Disc Steer
	A-32101-1	Axle Vent Assembly	1	TRLAXLE

Item	Part Number	Spindle	Bearing	Description	Notes
1	97453-008		Conventional	TIREMAAX Hubcap Decal	
	97453-009		PreSet	TIREMAAX Hubcap Decal	
	97453-015		HXL2™	TIREMAAX Hubcap Decal	
	97453-011		HXL5®	TIREMAAX Hubcap Decal	
	97453-016		HXL5	TIREMAAX PRO-LB Hubcap Decal	PRO-LB
	97453-010		HXL7®	TIREMAAX Hubcap Decal	
	97453-017		HXL7	TIREMAAX PRO-LB Hubcap Decal	PRO-LB
2	C-32055-4	HN		TIREMAAX Hubcap	HN Single wheel, without decal.
	C-32055-3	HN		TIREMAAX Hubcap	HN Dual wheel, without decal.
	C-32056-4	HP		TIREMAAX Hubcap	HP Single wheel, without decal.
	C-32056-3	HP		TIREMAAX Hubcap	HP Dual wheel, without decal.
	C-40718-3	HN		TIREMAAX PRO-LB Hubcap	PRO-LB HN Dual/Single without decal.
	C-40719-3	HP		TIREMAAX PRO-LB Hubcap	PRO-LB HP Dual/Single without decal.
3	VS-32054-4	HN/HP		Hubcap Window Replacement Kit – Opaque Without Decal	Includes hubcap window, O-ring, gasket, screws and window plate.



Hubcap Decals

Item	Part Number	Bearing	Description	Notes
4	97453-004	HXL7®	Hubcap Decal	Without TIREMAAX.
	97453-012	HXL5®	Hubcap Decal	Without TIREMAAX.
	97453-014	HXL2™	Hubcap Decal	Without TIREMAAX.
	97453-006	PreSet	Hubcap Decal	Without TIREMAAX.
	97453-007	Conventional	Hubcap Decal	Without TIREMAAX.

Hubcaps

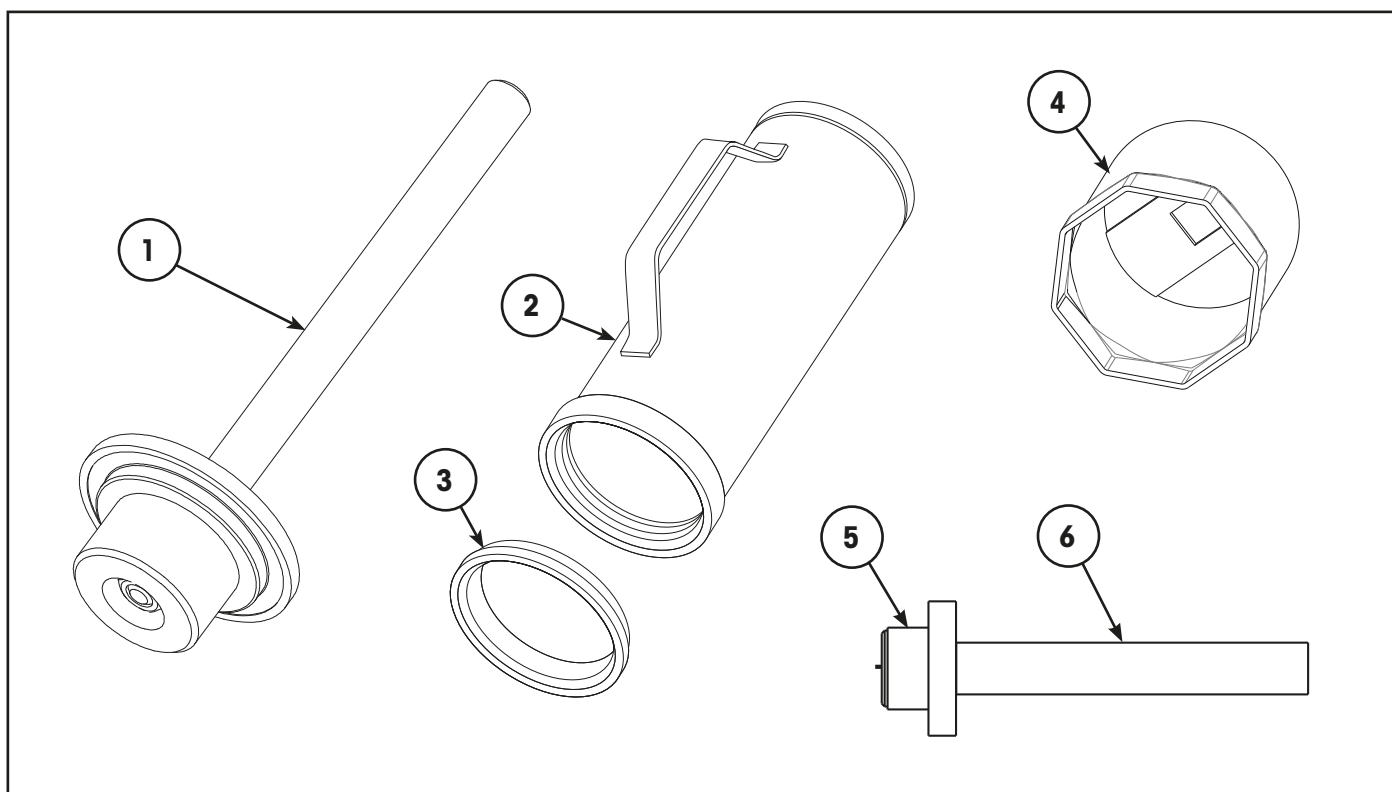
Hubcaps listed here include the decal. For HUS hubs refer to "HUS™ Drum Brake Wheel End – 22.5" on page 30.

Item	Part Number	Spindle	Bearing	Chrome	Description	Notes
5	98846-036P	HP	HXL7®		HXL7 Standard Hubcap	
	98846-037P	HP	HXL7	X	HXL7 Chrome Hubcap	
	98846-061P	HP	HXL5®		HXL5 HP Standard Hubcap	
	98846-062P	HP	HXL5	X	HXL5 HP Chrome Hubcap	
	98846-063P	HN	HXL5		HXL5 HN Standard Hubcap	
	98846-064P	HN	HXL5	X	HXL5 HN Chrome Hubcap	
	98846-059P	HP	HXL2™		HXL2 HP Standard Hubcap	
	98846-060P	HP	HXL2	X	HXL2 HP Chrome Hubcap	
	98846-057P	HN	HXL2		HXL2 HN Standard Hubcap	
	98846-058P	HN	HXL2	X	HXL2 HN Chrome Hubcap	
	98846-038P	HP	PreSet		PreSet HP Standard Hubcap	
	98846-039P	HP	PreSet	X	PreSet HP Chrome Hubcap	
	98846-044P	HN	PreSet		PreSet HN Standard Hubcap	
	98846-045P	HN	PreSet	X	PreSet HN Chrome Hubcap	
	98846-040P	HP	Conventional		Conventional HP Standard Hubcap	
	98846-041P	HP	Conventional	X	Conventional HP Chrome Hubcap	
	98846-046P	HN	Conventional		Conventional HN Standard Hubcap	
	98846-047P	HN	Conventional	X	Conventional HN Chrome Hubcap	
6	S-32629-1	HP	Any		Pressed Steel HP Hubcap	Global product.
7	C-34434	HP	HXL7		Cast Aluminium HP Hubcap	Global product.
8	98796-002	HN	Oil		Stemco Oil Fill HN Hubcap	
9	98920-002	HP	Oil		Stemco Oil Fill HP Hubcap	

Toowoomba Screw-On Hubcap

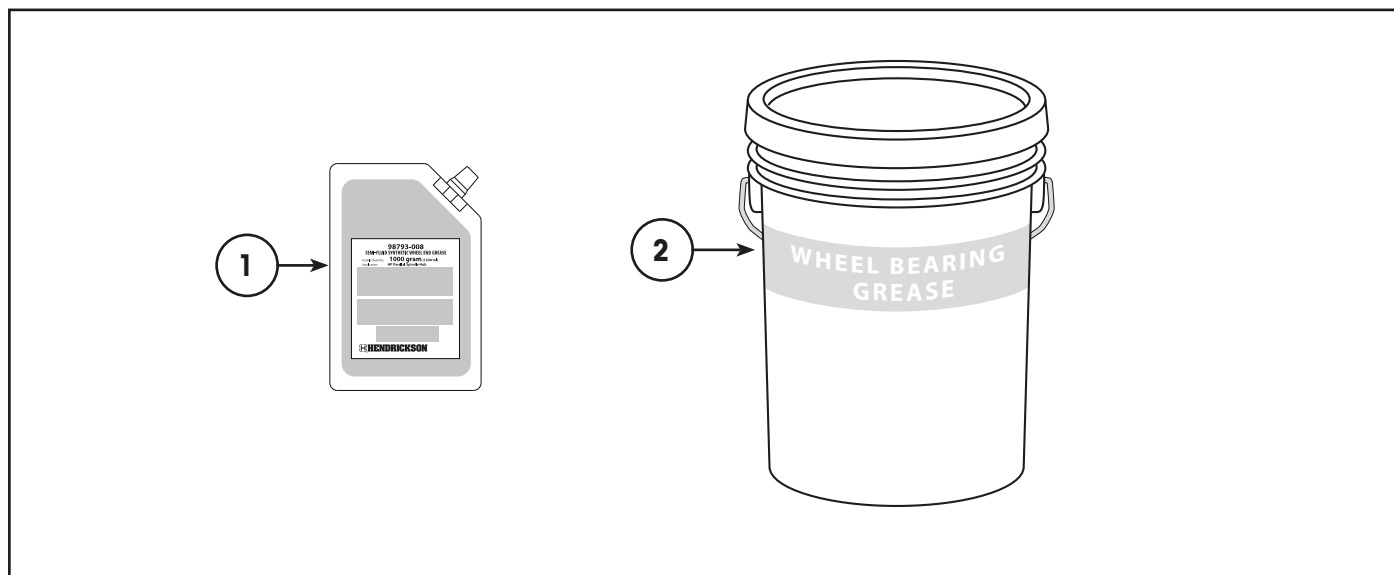
Item	Part Number	Description	Notes
10	98846-005	Screw-On Hubcap to Suit Toowoomba Hub	Includes window & O-ring seal, item 11.
11	98920-001	Window to Suit Toowoomba Screw-On Hubcap	With O-ring seal and gasket. Part of item 10.

SPECIAL TOOLS



Item	Part Number	Description	Notes
1	S-32121-1	HN Hub Mounted Seal Insertion Tool	Suits hub mounted HN seal.
	S-32121-2	HP Hub Mounted Seal Insertion Tool	Suits hub mounted HP seal.
2	97781-003	Spindle Mounted Seal Insertion Tool Tube	Use with adapter ring – item 3.
3	97781-001	HN Spindle Mounted Seal Insertion Tool Adapter Ring	Use with universal tool tube – item 2.
	97781-002	HP Spindle Mounted Seal Insertion Tool Adapter Ring	
4	S-32120-1	Socket, HN 8-Point Spindle Nut 3/4" Drive – 3-13/16"	Suits PRECISION240® & HN 3-piece inner nut.
	S-32120-2	Socket, HN 8-Point Spindle Nut 3/4" Drive – 3-1/4"	Suits HN 3-piece outer nut.
	S-32120-3	Socket, HP 8-Point Spindle Nut 3/4" Drive – 4-7/8"	Suits PRECISION320™ & HP 3-piece inner nut.
	S-32120-4	Socket, HP 8-Point Spindle Nut 3/4" Drive – 4-3/8"	Suits HP 3-piece outer nut.
	S-32120-6	Socket, HP 8-Point Spindle Nut 3/4" Drive – 4-13/16"	Suits HP Pro-Torq nut.
5	S-28146-1	Spindle Plug Driver – HN Tapered Spindle	Use with plug driver handle, item 6.
	S-28146-3	Spindle Plug Driver – HP Parallel Spindle	Use with plug driver handle, item 6.
6	S-27399	Spindle Plug Driver Handle	Use with plug driver, item 5.

LUBRICANTS



Item	Part Number	Description	Quantity	Notes
1	98793-009	Pouch, Semi-Fluid Grease Mobilith SHC 007	460 g (560ml)	[1] One pouch suits one HN ductile iron or aluminium wheel end.
	98793-008	Pouch, Semi-Fluid Grease Mobilith SHC 007	1000 g (1230ml)	[1] One pouch suits up to one HP wheel end. Refer table below for grease quantity required to suit other wheel end types.
2	98793-007	Drum, Semi-Fluid Grease Mobilith SHC 007	16 kg drum	–

NOTE: Refer to the semi-fluid grease quantity table below to view required lubricant quantities. Service procedures and related details appear in Hendrickson Wheel End Maintenance Manual [97117-250](#).

Wheel End Type	Semi-fluid Grease Amount Required
HN HXL5® (excluding ADI) [1]	460 g (560ml)
HN HXL5 ADI [1]	690 g (850ml)
HP HXL5 or HXL7®	1000 g (1230ml)

[1] For hub and bearing package identification, refer to “Wheel End Identification” on page 4.

LUBRICANT SPECIFICATIONS: Lubricant recommendations and specifications are detailed in the *Lubrication* section of Hendrickson Trailer Suspension Maintenance Manual [97117-161](#).



REVISIONS TABLE

DATE	REV	PAGE	DESCRIPTION
Jul-2022	H	15, 27	Replace obsolete 430 mm rotor with kit, ECN 11774.
Jul-2022	H	31, 34	Add wheel end plug, filter & tools.
Jul-2022	H	5, 9, 11, 13, 15, 17, 19, 21, 23	Update 9/16" lubricant plug, ECN 11808.
Jul-2022	H	9, 15, 27	Add rotor and hardware kits, ECN 11861.
Jul-2022	H	30	HUS hubcap no longer available. ECN 11928.
Jul-2022	H	34	Update socket numbers, ECN 11969.
Jul-2022	H	4, 5	Add bearing, spindle, material, design and stud identification and selection details.
Oct-2022	I	31, 35	Add NZ Hubo bracket, ECN 11976. Add semi-fluid grease pouches, ECN 11863, 11970.
Mar-2024	J	7	Add 275 hub kit and ABS pulse ring, ECN 12167.
Mar-2024	J	11	Update HXL5 bearing rebuild kit number, ECN 12145.
Mar-2024	J	31	Add axle vent assembly.
Mar-2024	J	32	Add TIREMAAX PRO-LB hubcaps, ECN 12021, 12087.

Trademarks: CONNEX™, HXL7®, HXL5®, Hendrickson Unitized System™, HUS™, INTRAAX®, PRECISION320™, PRECISION240®, TIREMAAX™, TOUGHLIFT™, TRLAXLE®, and WATCHMAN® are registered trademarks of Hendrickson USA, L.L.C.

Other product and company names used in this publication are trademarks™ or registered® trademarks of their respective holders. Use of them does not imply any affiliation with or endorsement by them.

Actual product performance may vary depending upon vehicle configuration, operation, service and other factors.

All applications must comply with applicable Hendrickson specifications and must be approved by the respective vehicle manufacturer with the vehicle in its original, as-built configuration. Contact Hendrickson for additional details regarding specifications, applications, capacities, and operation, service and maintenance instructions.

Need Help? Australia Call +61 3 8792 3600 or Email customerservice@hendrickson.com.au

New Zealand Call +64 9 570 4721 or Email nz-customerservice@hendrickson.co.nz



www.hendrickson.com.au

HENDRICKSON ASIA PACIFIC

ABN 21 004 992 769
32-44 Letcon Drive, P.O. Box 1063
Dandenong, Victoria, 3175
61.3.8792.3600 • Fax 61.3.8792.3699

HENDRICKSON NEW ZEALAND

Unit P, 24 Allright Place
Mt Wellington, Auckland, 1060
64.9.570.4721 • Fax 64.9.570.4816