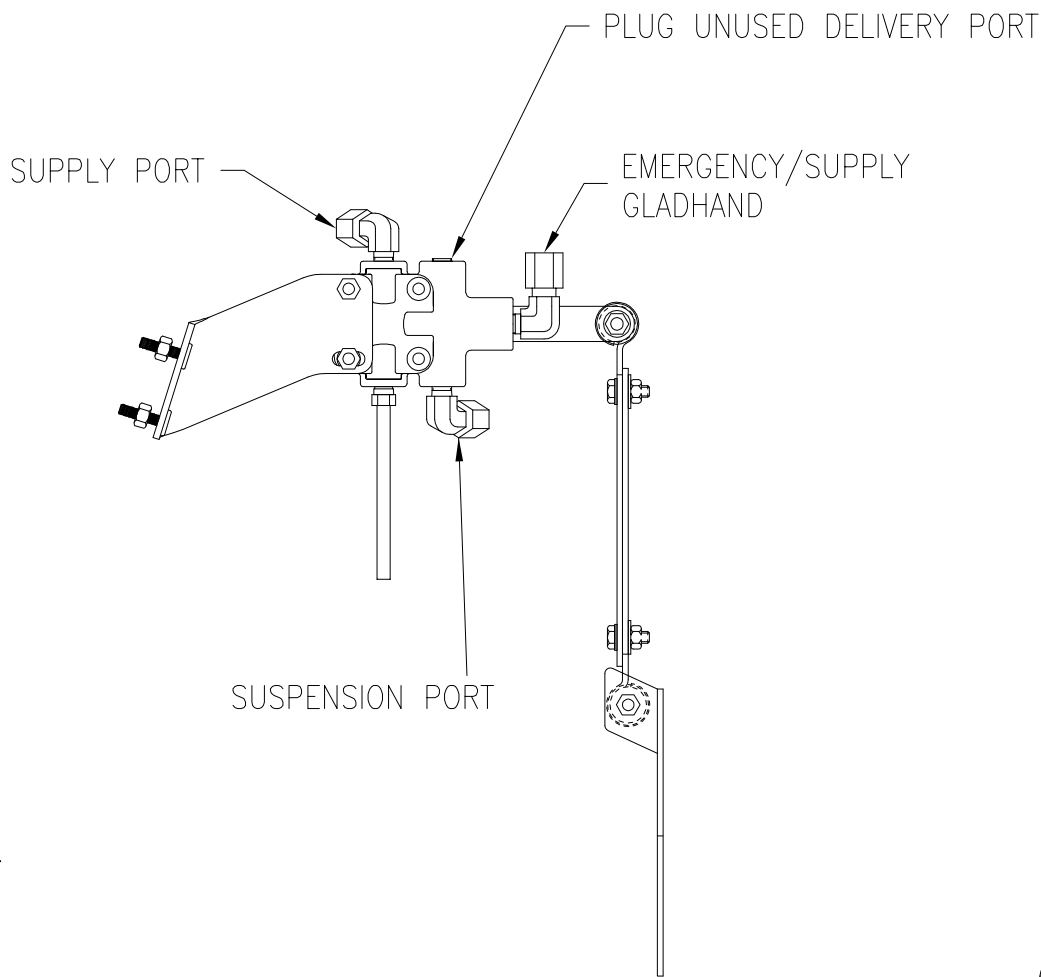
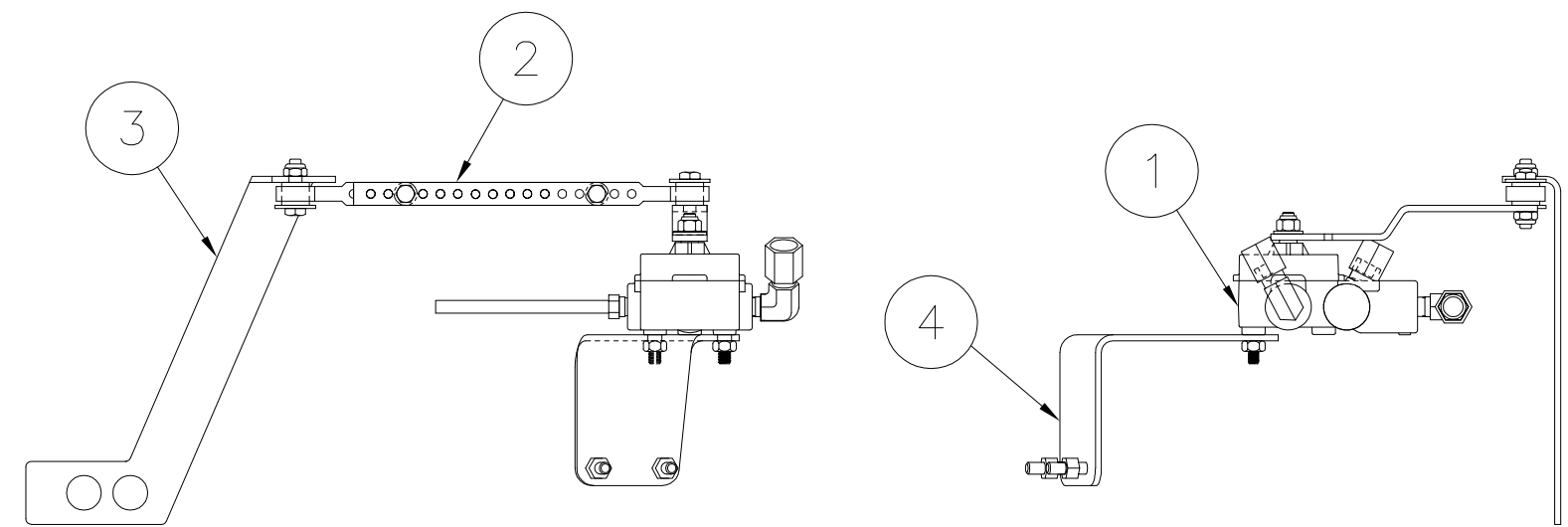


This Print remains the property of Hendrickson. All information contained thereon is confidential. It is loaned, subject to return on demand and on express condition that it is not to be copied or used directly or indirectly for any purpose other than the purpose for which it has been loaned to you.

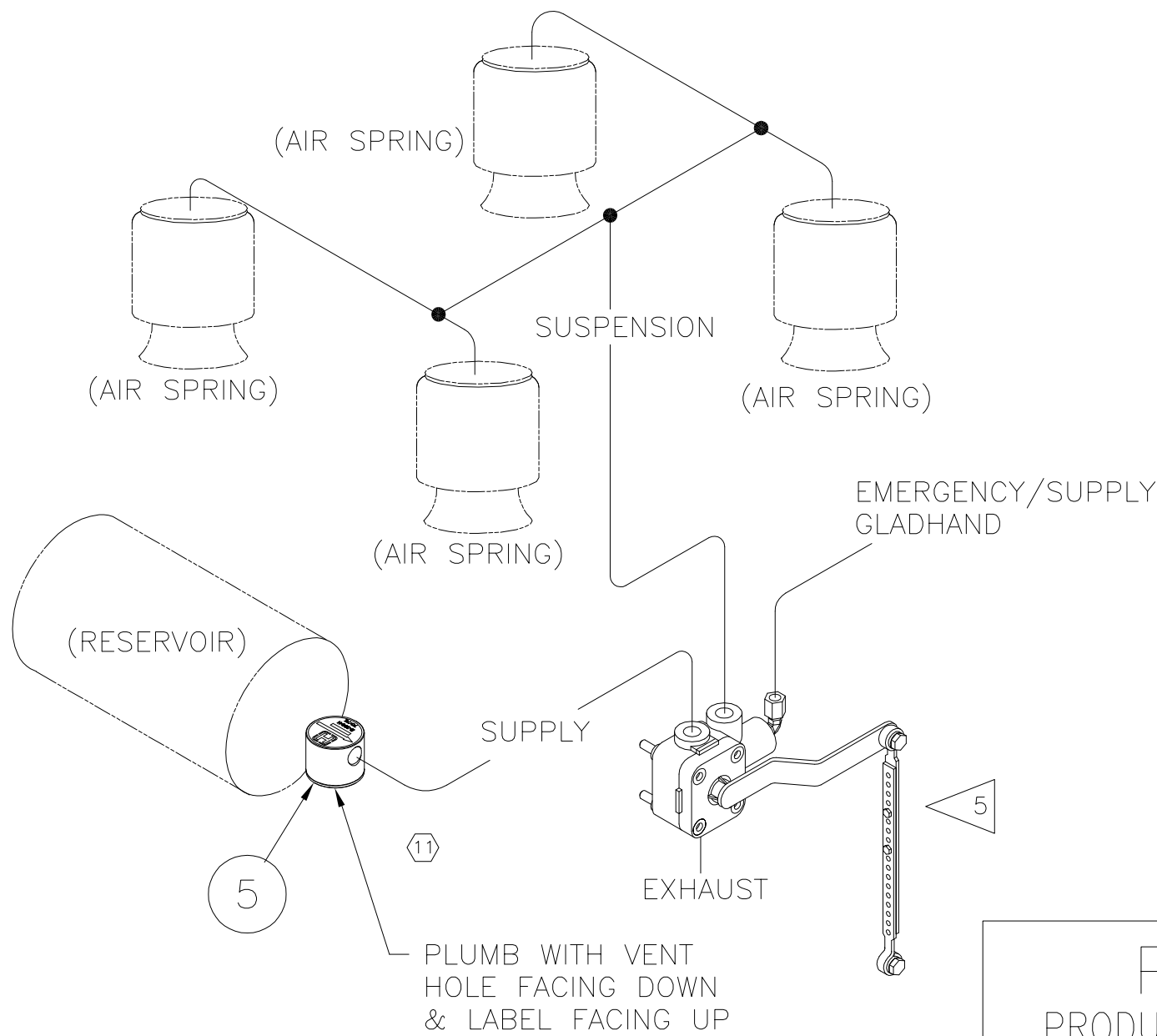
*NON "HIGH-CONTROL" ONLY	
*RIDE HEIGHT	LINK(INCHES)
13.50	8.500
14.00	8.875
15.00	9.625
16.00	9.250
17.00	10.000



NOTES :

- DO NOT ADD LUBRICATION TO AIR SYSTEM.
- ALL CONNECTIONS MUST BE LEAK PROOF.
- AVOID BENDS IN AIR LINES.
- AIR LINES TO BE FURNISHED BY INSTALLER.
3/8 O.D. D.O.T APPROVED TUBING RECOMMENDED.
- TRIM & BOLT LINKS AS REQ'D TO HOLD HEIGHT CONTROL VALVE IN NEUTRAL POSITION WHEN SUSPENSION IS AT RIDE HEIGHT.
- DO NOT OVER TIGHTEN LINK MOUNTING BOLTS. THE LINK SHOULD PIVOT FREELY ABOUT THE BOLT. THE LINK, WHEN PROPERLY INSTALLED, SHOULD APPEAR VERTICAL WHEN VIEWING IT FROM THE FRONT OF THE SUSPENSION.
- TO MAKE FINE ADJUSTMENTS IN RIDE HEIGHT LOOSEN HCV MOUNTING NUTS AND ROTATE VALVE BODY.
- ALL ITEMS SHIPPED UNASSEMBLED. FITTINGS, NUTS AND BOLTS TO BE PLACED IN A PLASTIC BAG.
- HEIGHT CONTROL VALVE SERVICE REPLACEMENT P/N VS-29394.
- RECOMMENDED AIRLINE FITTING INSTALLATION TORQUE NOT TO EXCEED 7 FT-LB.

HCV WITH DUMP			AKHD0270-3	AKHD0270F-3	AKHD0270B-3
REV.			9	9	8
ITEM	PART NO.	DESCRIPTION	QTY.	QTY.	QTY.
1	A-29393	HCV W/DUMP	1	1	1
2	A-14187	LINK ASSEMBLY - BOLTED	1	1	1
3	C-22477	BRACKET, HCV	1	1	1
4	B-26306	HCV BRACKET ASSEMBLY	1	1	1
5	B-38941	PRESSURE PROTECTION VALVE	1	1	-
*6	DWG AKHD0270	NON-DELAY HCV KIT - INTRAAX® AANT	1	1	1
*7	L-668	INSTALLATION INSTRUCTIONS	1	1	1
*8	A-29871	HCV SUB-KIT (#2)	1	1	1
*9	A-29874	HCV SUB-KIT (#5)	1	-	1
*10	L-373	CAUTION STICKER	1	1	1
* NOT SHOWN			3.16	2.83	2.99



OPERATION :

VALVE ARM HORIZONTAL

FRAME IS AT PRESET HEIGHT
NO AIR FLOW OCCURRING.

VALVE ARM DOWN

FRAME IS HIGH, AIR SPRINGS
ARE EXHAUSTED UNTIL ARM
IS HORIZONTAL.

VALVE ARM UP

FRAME IS LOW, AIR SPRINGS
ARE INFLATED UNTIL ARM
IS HORIZONTAL.

FUNCTION:

AUTOMATIC HEIGHT CONTROL.
AUTOMATIC SUSPENSION DUMP.

H. HENDRICKSON

TRAILER COMMERCIAL VEHICLE SYSTEMS
2070 INDUSTRIAL PLACE S.E., CANTON, OH 44707-2600 U.S.A.

UNLESS OTHERWISE NOTED: TOLERANCES ARE:		DIMENSIONS ARE: INCHES	
.X: ± .1			
.XX: ± .06			
.XXX: ± .030			
ANGULAR: ± .05°			
3RD ANGLE PROJECTION		DIMENSIONS ADHERE TO ANSI Y14.5M-1982	

11	32395	DM	2-22-19
8b	25944	SRP	11-7-16
8a	23104	NWD	6/4/14
8	22886	GRS	2-21-14
REV.	ECN NO.	BY	DATE

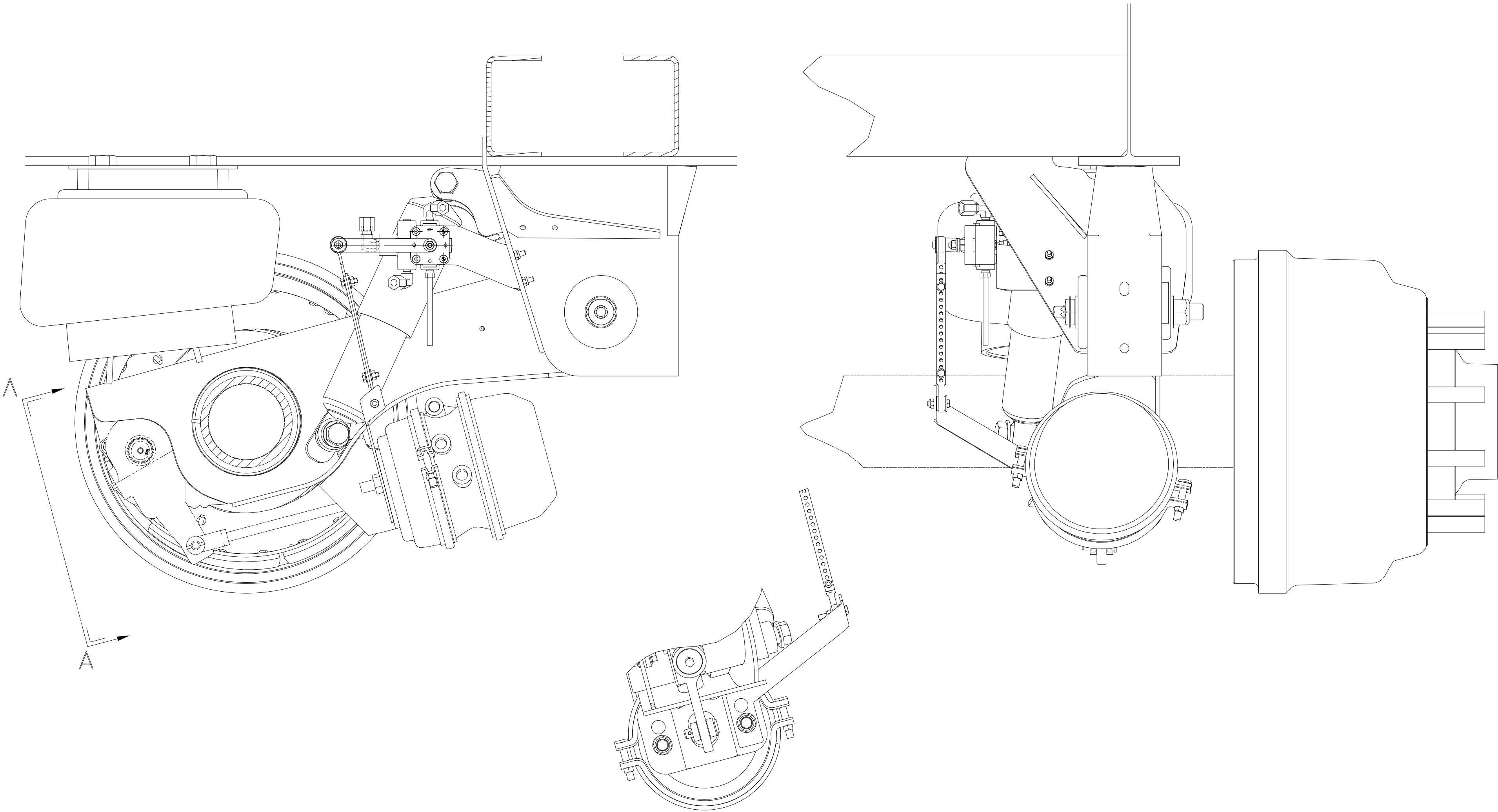
DRAWN BY	J. CERVANTEZ
CHK'D BY	C. ANDERSON
APP'D BY:	J. WHITE

DATE	9-3-02
------	--------

NON-DELAY HCV KIT FOR
INTRAAX® AANT

SCALE	NTS	PAGE	1 OF 2
(SIZE)		DRAWING NO.	AKHD0270

This Print remains the property of Hendrickson. All information contained thereon is confidential. It is loaned, subject to return on demand and on express condition that it is not to be copied or used directly or indirectly for any purpose other than the purpose for which it has been loaned to you.



VIEW AA
SCALE: .25=1.00



TRAILER COMMERCIAL VEHICLE SYSTEMS
2070 INDUSTRIAL PLACE S.E., CANTON, OH 44707-2600 U.S.A.

UNLESS OTHERWISE NOTED:	
TOLERANCES ARE:	DIMENSIONS ARE:
.X: ± .1	INCHES
.XX: ± .06	
.XXX: ± .030	
ANGULAR: ± 0.5°	
3RD ANGLE PROJECTION	
DIMENSIONS ADHERE TO ANSI Y14.5M-1982	

11	32395	DMM	2-22-19
Bb	25944	SRP	11-7-16
Bo	23104	NWD	6/4/14
B	22886	GRS	2-21-14
REV.	ECN NO.	BY	DATE

DRAWN BY	J. CERVANTEZ	DATE	9-3-02
CHK'D BY	C. ANDERSON	9/4/02	
APP'D BY:	J. WHITE		

THIS DRAWING IS
THE CONFIDENTIAL
PROPERTY OF
HENDRICKSON

NON-DELAY HCV KIT FOR
INTRAAX® AANT

P
PRODUCTION

SCALE	NTS	PAGE	2 OF 2
(SIZE)		DRAWING NO.	AKHD0270