

# **H PARTS LIST**

## **INTRAAX® AAEDT 30K**

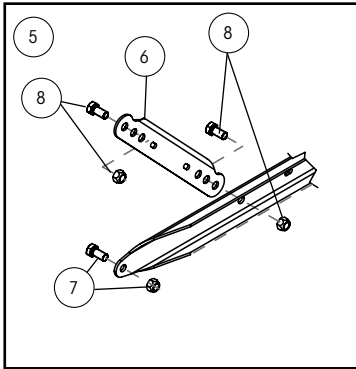
LIT NO: L1059

DATE: July 2025

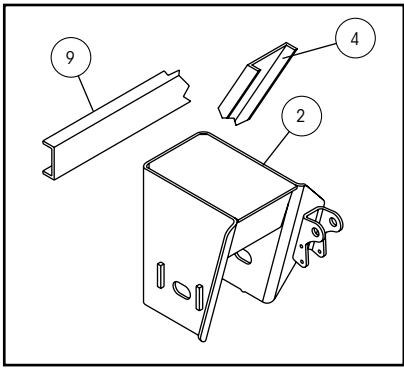
REVISION: G

---

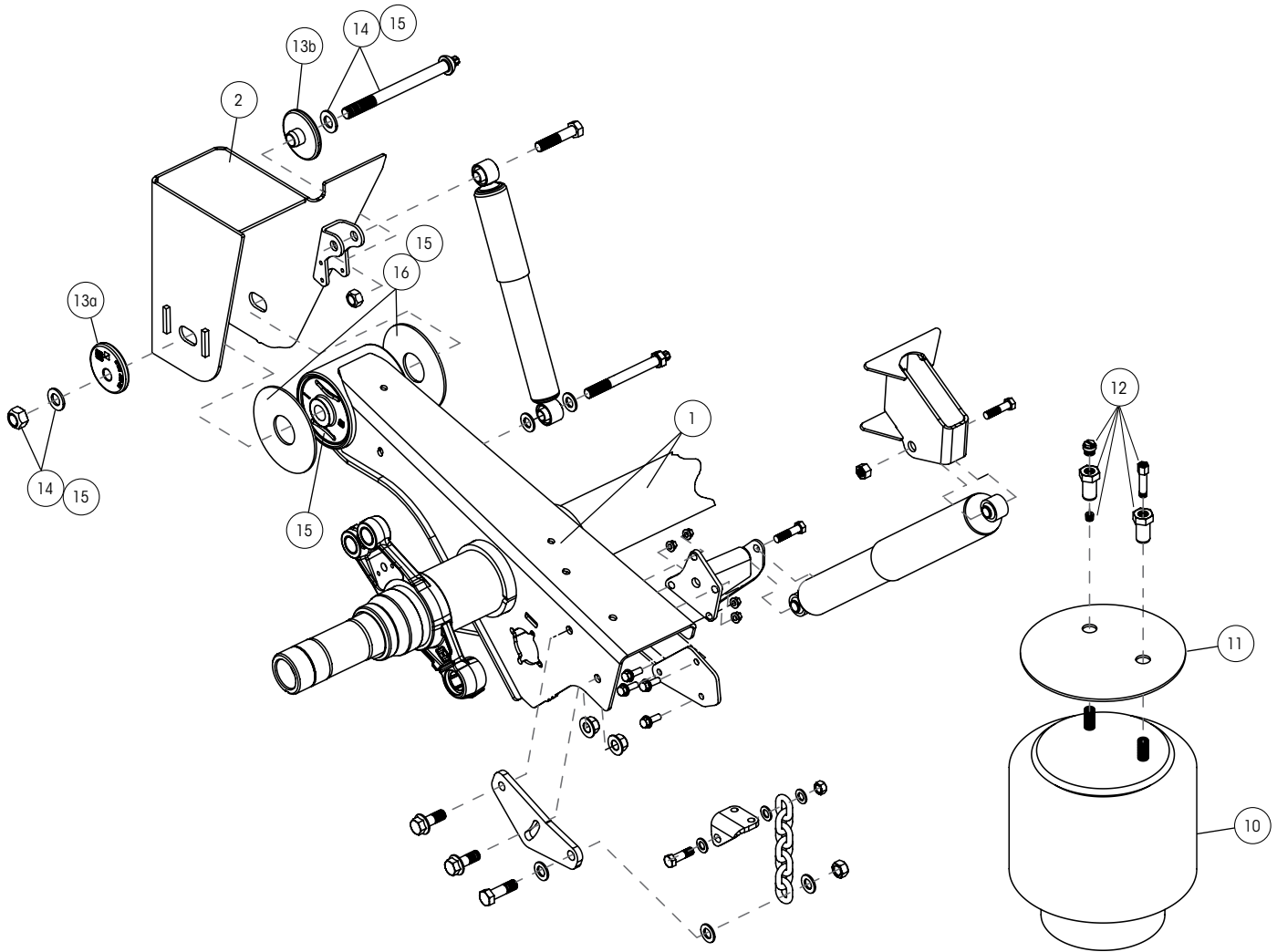




Bolt-on C-Channel



Wingless, weld-on frame bracket  
with QUIK-ALIGN®



ITEM	DESCRIPTION	PART NO.	QTY.	NOTE
1	AXLE / BEAM WELDMENT	HTRAAX.XXX	1	Contact Hendrickson for assistance
2	FRAME BRACKET <sup>1</sup>			See L1266 Frame Bracket Parts List
3	FRAME BRACKET GUSSET (Not shown)	S-27330	2	14" and 15" ride heights
4	FRAME BRACKET BRACE	B-2347-7	1	16" and 17" ride heights
5	BOLT-ON C-CHANNEL KIT <sup>2</sup>			
	71.5" Track	S-31901-3C	1	Standard / black primer; includes c-channel, 2 struts and strut bolt kit
	77.5" Track	S-31901-1C	1	Standard / black primer; includes c-channel, 2 struts and strut bolt kit
6	STRUT <sup>2</sup>	B-30591	2	
7	C-CHANNEL BOLT KIT	S-29822	1	Includes 2 screws and 2 prevailing torque nuts
8	STRUT BOLT KIT	S-30720	1	Includes 6 screws and 6 prevailing torque nuts
9	WELD-ON C-CHANNEL			
	71.5" - 77.5" Tracks	A-1631-19	1	13.5" to 19" ride heights
	83.5" - 85" Tracks	A-1631-35	1	13.5" to 19" ride heights
10	AIR SPRING	S-25319	2	Use to replace C-25319
11	AIR SPRING FLEX PLATE			
	Weld-on	S-23294	2	
	Bolt-on	B-24813	2	14" to 17" ride heights
		S-23294	2	18" to 19" ride heights
12	AIR SPRING MOUNTING KIT (One per air spring)			
	Standard Frame	S-25339/2	2	
	Thick .09" to 1.25" Frame	S-25453/2	2	
13	ALIGNMENT COLLARS			
	13a Eccentric	S-20925	2	Pivot bolt hole is offset from center of collar
	13b Concentric	S-20924	2	Pivot bolt hole is in center of collar
14	QUIK-ALIGN® PIVOT BOLT KIT <sup>3</sup>			
	14a Pivot bolt kit	S-24679	2	Includes 10" shear-type bolt, nut and washers
	14b Standard	S-26369	2	Includes 10" shear-type bolt, nut, washers, and std. bushing tube spacer (Item 16)
	Off-Highway	S-40394-1	2	Includes 10" shear-type bolt, nut, washers and off-highway bushing tube spacers (Item 16)
	14c Pivot bolt kit w/ alignment collars	S-24680	2	Includes 10" shear-type bolt, nut, washers and alignment collars
15	TRI-FUNCTIONAL® BUSHING KIT <sup>3, 4</sup>			
	Standard	S-24691	2	Includes bushing, pivot bolt kit (Item 14a), std. bushing tube spacer (Item 16) and lube
	Off-Highway	S-40393-1	2	Includes bushing, pivot bolt kit (Item 14a), off-highway bushing tube spacers (Item 16) and lube
	Standard pivot bushing kit w/ alignment collars	S-28654	1	Includes 2 bushings, 2 pivot bolt kits (Item 14a), std. bushing tube spacers (Item 16) and lube
16	BUSHING TUBE SPACERS			4 required per axle
	Standard	S-21099	4	
	Off-Highway	S-40230-1	4	

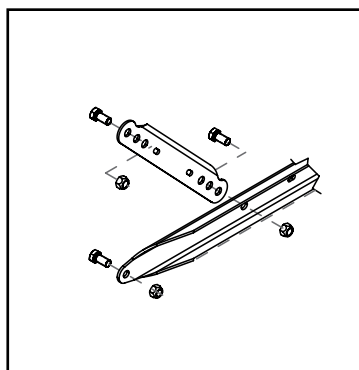
1. Other options exist based on frame attachment, frame bracket style, bolt hole pattern and connection. Contact Hendrickson for assistance or refer to L1266 Frame Brackets Parts List.

2. Struts are only optional for bolt-on frame brackets. Other options exist for galvanized or different track widths.

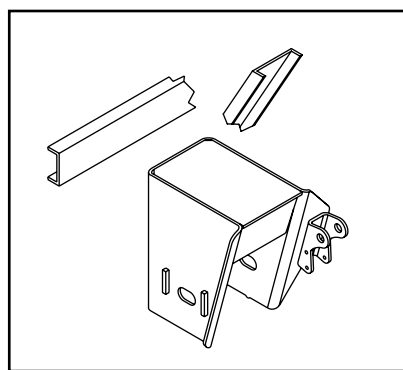
3. Best installed with Hendrickson's E-20 socket S-24536 (1-inch drive sleeveless), S-25119 (1-inch drive sleeve) or S-24303 (3/4-inch drive sleeveless). Hendrickson recommends S-25119.

4. Bushing tool S-21307 is required to correctly rebush the suspension.

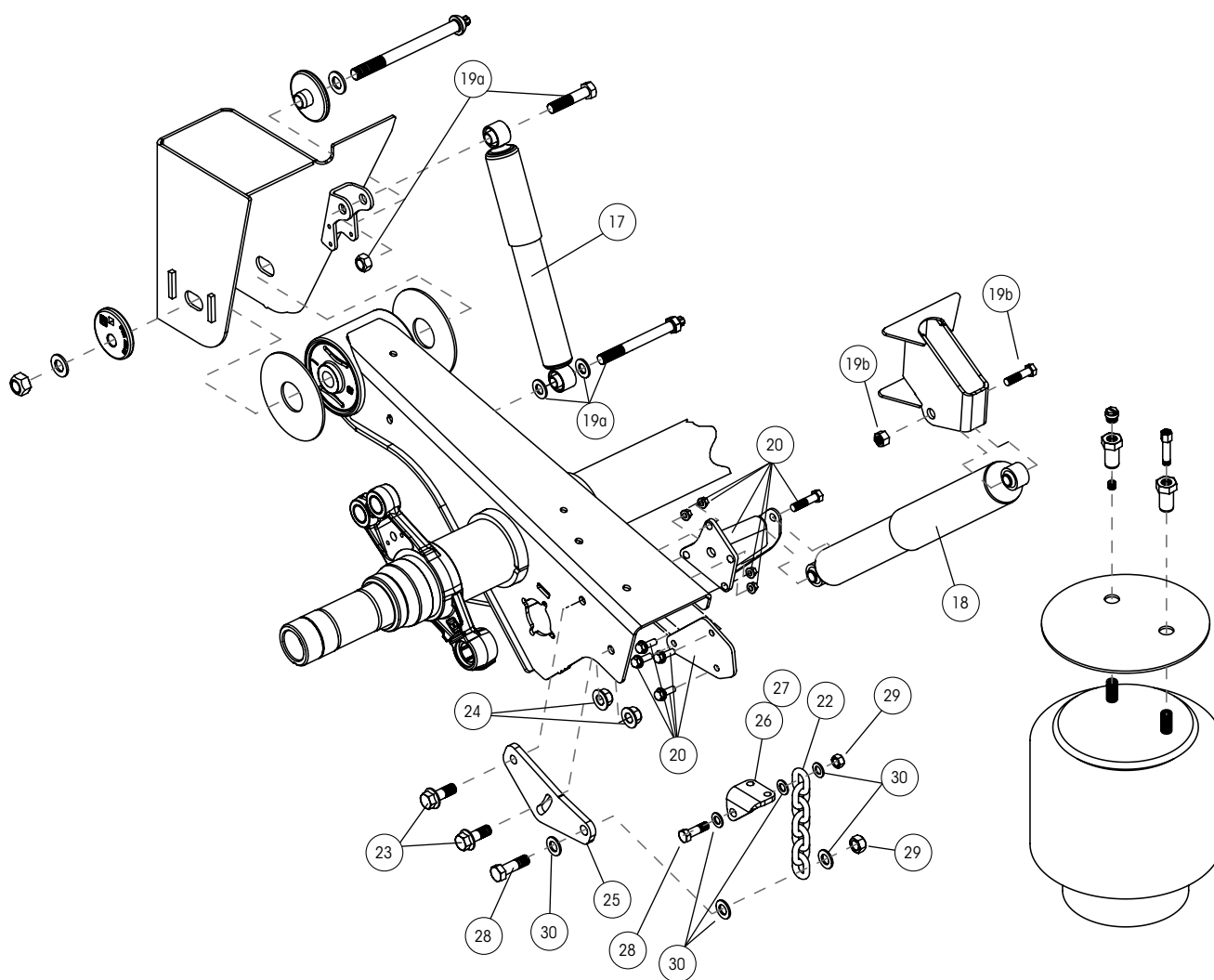
Note: Identification tag can be found on the inside of the curbside beam.



Bolt-on C-Channel



Wingless, weld-on frame bracket  
with QUIK-ALIGN®





ITEM	DESCRIPTION	PART NO.	QTY.	NOTE
<b>17</b>	<b>FRONT SHOCK ABSORBER</b> (Extended service / High damping)			
	14" ride height	S-23316	2	
	15" and 17" ride height	S-25515	2	
<b>18</b>	<b>REAR SHOCK ABSORBER</b>			
	14" and 15" ride height	S-25436	2	
	16" and 17" ride height	S-25512	2	
<b>19</b>	<b>SHOCK BOLT KIT</b> (One per shock)			
	<b>19a</b> Front shock absorber	S-24757/2	2	
	<b>19b</b> Rear shock absorber	S-2157/2	2	
<b>20</b>	<b>REAR SHOCK TOWER REPLACEMENT</b>			
	Roadside	S-26426	1	
	Curbside	S-26427	1	
<b>21</b>	<b>SHOCK STRAP</b> (Not shown)			
	14" ride height	C-24041-3		Includes 2 straps, 2 clevis and 4 nylon ties
	15" - 17" ride heights	C-24041-12		Same as above

## REBOUND LIMITER COMPONENTS

<b>22</b>	<b>REBOUND LIMITER CHAIN</b>			
	15" ride height	SA-9600-13	2	13 links
	14", 16", 17" ride heights	SA-9600-15	2	15 links
	19" ride height	SA-9600-17	2	17 links
<b>23</b>	<b>CHAIN BRACKET FLANGED BOLT</b>	SA-6900-20	4	
<b>24</b>	<b>CHAIN BRACKET FLANGED NUT</b>	SA-7000-6	4	
<b>25</b>	<b>LOWER CHAIN BRACKET</b>	B-25333	2	
<b>26</b>	<b>UPPER CHAIN BRACKET (L)</b>	C-25271-1	1	
<b>27</b>	<b>UPPER CHAIN BRACKET (R)</b>	C-25271-2	1	
<b>28</b>	<b>CHAIN BRACKET BOLT</b>	SA-1000-31	4	
<b>29</b>	<b>CHAIN BRACKET NUT</b>	SA-8900-3	4	
<b>30</b>	<b>CHAIN BRACKET WASHER</b>	SA-1500-6	12	



NOTES:

Handwritten notes area consisting of 30 horizontal lines.



**NOTES:**

[illegible]

*Actual product performance may vary depending upon vehicle configuration, operation, service and other factors.*

*All applications must comply with applicable Hendrickson specifications and must be approved by the respective vehicle manufacturer with the vehicle in its original, as-built configuration.  
Contact Hendrickson for additional details regarding specifications, applications, capacities, operation, service and maintenance instructions.*

**Call Hendrickson at 330.489.0045 or 866.RIDEAIR (743.3247) for additional information.**



[www.hendrickson-intl.com](http://www.hendrickson-intl.com)

**TRAILER COMMERCIAL VEHICLE SYSTEMS**

2070 Industrial Place SE  
Canton, OH 44707-2641 USA  
866.RIDEAIR (743.3247)  
330.489.0045 • Fax 800.696.4416

**Hendrickson Canada ULC**

2825 Argentinia Road, Unit #1 - 4  
Mississauga, ON Canada L5N 8G6  
800.668.5360  
905.789.1030 • Fax 905.812.9423

**Hendrickson Mexicana**

Circuito El Marqués Sur #29  
Parque Industrial El Marqués  
Pob. El Colorado, Municipio El Marqués,  
Querétaro, México C.P. 76246  
+52 (442) 296.3600 • Fax +52 (442) 296.3601

L1059 Rev G 07-25

© 2014 - 2025 Hendrickson USA, L.L.C. All Rights Reserved. All trademarks shown are owned by Hendrickson USA, L.L.C., or one of its affiliates, in one or more countries.  
Information contained in this literature was accurate at the time of publication. Product changes may have been made after the copyright date that are not reflected.

Printed in United States of America