

# HENDRICKSON LIFT AXLE ORDERING GUIDE: COMPOSILITE® EXF TRAILER, 13K (NON-STEER)

This ORDERING GUIDE is intended to assist you in the selection of Hendrickson COMPOSILITE® EXF Lift Axles for trailer (13k). For comprehensive information on other available Hendrickson models, options and pricing, contact HENDRICKSON CUSTOMER SERVICE at 800.660.2829 (US and Canada) or liftaxle@hendrickson-intl.com. Your Hendrickson Customer Service Representative can help you complete this form.

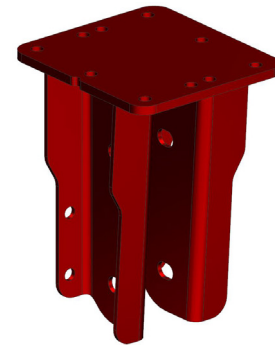
Company:		Name:		Telephone:	
Email:		Fax:		Location:	

**STEP 1:** Please select the required **MOUNTING TYPE:**

Weld-on



Bolt-on (See Bolt-Hole Pattern B in Step 4)



**STEP 2:** Please select the required **BRAKE TYPE:**

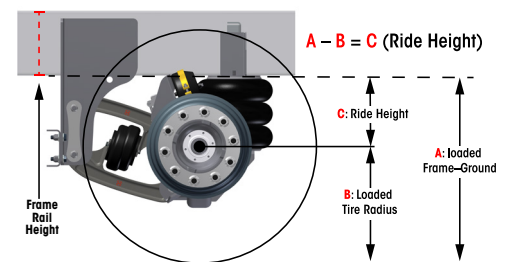
Drum Brakes

MAXX22T® Air Disc Brakes\*

Bendix ADB22x Air Disc Brakes\*

**STEP 3a:** Please select your **RIDE HEIGHT (P Spindle for 16.5" or above only):**

10.5" RIDE HEIGHT	11.5" RIDE HEIGHT	12.5" RIDE HEIGHT
13.5" RIDE HEIGHT	14.5" RIDE HEIGHT	15.5" RIDE HEIGHT
16.5" RIDE HEIGHT	17.5" RIDE HEIGHT	18.5" RIDE HEIGHT
19.5" RIDE HEIGHT	20.5" RIDE HEIGHT	21.5" RIDE HEIGHT



Notes: If you do not know how to calculate Ride Height, please go to Step 3b ↓

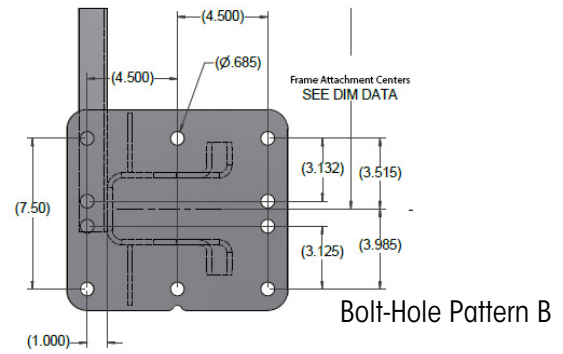
**STEP 3b** If you are not sure how to calculate **Ride Height**, please provide us with the following:

<b>Vehicle's Primary Suspension Type:</b>	Air Ride	Chalmers	Rubber Block	Mechanical Spring
<b>Bottom of Frame Rail-to-Ground Dimension (at axle mounting location):</b>	Unloaded:		Loaded:	
<b>Frame Rail Height*:</b>	<b>Preferred Tire Size to be Mounted on Lift Axle:</b>			

Notes: \*Frame Rail Height is used in the calculation to assure proper tire clearance in relation to the vehicle's body, trailer bed, etc.

**Step 4:** Please select the required **FRAME ATTACHMENT CENTERS**:

- 32-INCH FRAME ATTACHMENT CENTERS
- 34-INCH FRAME ATTACHMENT CENTERS
- 35-INCH FRAME ATTACHMENT CENTERS
- 38-INCH FRAME ATTACHMENT CENTERS
- 40-INCH FRAME ATTACHMENT CENTERS
- 41-INCH FRAME ATTACHMENT CENTERS
- 42-INCH FRAME ATTACHMENT CENTERS



**Step 5:** Please select **WHEEL-END** (Hub & Drum) options:

<b>See Page 4!</b>	Do you require <b>WHEEL ENDS?</b>	YES	NO	<b>If you selected "No", go directly to Step 7.</b>
	Do you require <b>ABS READY?*</b>	YES	NO	<b>*ABS sensor is NOT included.</b>
	Hub material (select one):	DUCTILE IRON	AUSTEMPERED DUCTILE IRON	ALUMINUM
<b>Notes:</b>	<b>*ABS Sensor Kit part number is 008245-1. Please order separately.</b>			

**Step 6:** Choose **HUB OPTIONS** (select only one):

<b>See Page 5!</b>	<b>HXL &amp; TIREMAAX® (Spindles N &amp; P only):</b>		<b>Standard (Spindles FF, N, P):</b>		
	Choose <b>ONE</b> Spindle type below:		Choose <b>ONE</b> Spindle type below:		
	Spindle N	Spindle P	Spindle FF	Spindle N	Spindle P
	Now choose <b>ONE</b> option below:		Now choose <b>ONE</b> option below:		
	HXL3® (80w/90 Oil)		Oil 80w/90		
	HXL3® (75w/90 Synthetic Oil)		Oil 75w/90 (Synthetic)		
	HXL5® (Semi-Fluid Grease)		Semi-Fluid Grease		
	*TIREMAAX® PRO or CP with HXL3® (80w/90 Oil)				
	*TIREMAAX® PRO or CP with HXL3® (75w/90 Synthetic Oil)				
*TIREMAAX® PRO or CP with HXL5® (Semi-Fluid Grease)					
<b>Notes:</b>	<b>*TIREMAAX® includes hubcap, axle hose, breather, and associated hardware. Please order the controller separately if required.</b>				

**Step 7:** Please select an option for **DUST SHIELDS\***:

- DUST SHIELDS INSTALLED
- NO DUST SHIELDS

**Notes:** \*Dust Shields are only available for Drum Brakes.

<b>Step 8:</b>	Please select an option for <b>BRAKE CHAMBERS:</b>	
	TYPE 20, 2.25-INCH STROKE BRAKE CHAMBERS (Recommended)	TYPE 14 BRAKE CHAMBERS FOR ADB (Recommended)
	TYPE 20L, 2.50-INCH STROKE BRAKE CHAMBERS	TYPE 16 BRAKE CHAMBERS FOR ADB
	TYPE 16, 2.25-INCH STROKE BRAKE CHAMBERS	TYPE 20-24, 2.50-INCH STROKE BRAKE CHAMBERS
	NO BRAKE CHAMBERS	

<b>Step 9:</b>	Please select your <b>DRUM FACE-TO-DRUM FACE</b> measurement:		
	<b>N Spindle: DRUM BRAKE (dished-in 13.5k rating)</b>	<b>AIR DISC BRAKE* (ADB)</b>	
	80.9 (96" Body) actual maximum axle width: 86.6"	<b>* ADB NOT AVAILABLE WITH N SPINDLE</b>	
	86.5 (96" Body) actual maximum axle width: 92.2"		
	89.3 (96" Body) actual maximum axle width: 95.0"		
<b>Recommended</b>	92.7 (102" Body) actual maximum axle width: 98.4"		
<b>Recommended</b>	93.5 (102" Body) actual maximum axle width: 99.2"		
	94.2 (102" Body) actual maximum axle width: 99.9"		
	95.3 (102" Body) actual maximum axle width: 101.0"		
	96.1 (102" Body) actual maximum axle width: 101.8"		
	<b>FF Spindle: DRUM BRAKE (dished-in 13.5k rating)</b>		<b>FF Spindle: AIR DISC BRAKE (dished-in 13.5k rating)</b>
	82.1 (96" Body) actual maximum axle width: 87.3"		82.9 (96" Body) actual maximum axle width: 88.1"
	87.7 (96" Body) actual maximum axle width: 92.9"	88.5 (96" Body) actual maximum axle width: 93.7"	
<b>Recommended</b>	90.5 (96" Body) actual maximum axle width: 95.7"	91.3 (96" Body) actual maximum axle width: 96.5"	
<b>Recommended</b>	93.9 (102" Body) actual maximum axle width: 99.1"	94.6 (102" Body) actual maximum axle width: 99.8"	
	94.7 (102" Body) actual maximum axle width: 99.9"	95.5 (102" Body) actual maximum axle width: 100.7"	
	95.4 (102" Body) actual maximum axle width: 100.6"	96.1 (102" Body) actual maximum axle width: 101.3"	
	96.5 (102" Body) actual maximum axle width: 101.7"	97.3 (102" Body) actual maximum axle width: 102.4"	
	97.3 (102" Body) actual maximum axle width: 102.5"	98.0 (102" Body) actual maximum axle width: 103.2"	
	<b>P Spindle (Only Available with 16.5" Ride Height or Higher)</b>		
	<b>P Spindle: DRUM BRAKE (dished-out 13.2k rating)</b>	<b>P Spindle: AIR DISC BRAKE (dished-out, see note*)</b>	
	72.0 (96" Body)	72.1 (96" Body)	
	78.0 (102" Body)	78.1 (102" Body)	
<b>Notes:</b>	*For P Spindle ADB, MAXX22T rating is 12.2k; BENDIX rating is 11k, per hub manufacturer.		

<b>Step 10:</b> Please select an option for <b>SURFACE TREATMENT:</b>			
	<b>Select One Option</b>	<b>Hanger &amp; Crossmember</b>	<b>Axle Body</b>
		Primer	Primer
		Soft Coat	Soft Coat
		Galvanized	Primer
		Galvanized	Soft Coat
<b>Notes:</b>	*SOFT COAT and GALVANIZED are <u>NOT</u> available for Weld-On applications.		

<b>Step 11:</b> Please select options for <b>AIR CONTROL KIT SPECIFICATIONS:</b>				
	<b>SELECT CONTROL MOUNTING STYLE (CHOOSE ONE OPTION):</b>			
	Inside cab	Outside on Frame	Maryland Spec.	No Control Requested
	<b>IF OUTSIDE ON FRAME (CHOOSE ONE OPTION):</b>			
	Steel Box	Composite Box		
	<b>IF LOCK-STRAIGHT OPTION SELECTED (CHOOSE ONE OPTION):</b>			
	Lift & Lock Straight Reverse	Down & Lock in Reverse		



*The World Rides On Us®*

**Important Information for Hendrickson Customers:**

**Wheel-End & Hub Options:** Any lift axle and suspension system's weight rating is limited by the lowest rating of any constituent component installed into or onto that system. The tire and rim specifications, orientation and load location can also affect the rating of the hubs and hence the axle and suspension system rating as a whole. It is the installer's responsibility to ensure that the axle and suspension system rating (which may be reduced, as indicated above) is not exceeded. Failure to do this can result in damage to the axle and suspension system. A particular concern is the possible "de-rating" of suspension capacity when using offset (dished-out or dished-in) wheels, a situation that can put an excessive load on the bearings and spindle, which can lead to reduced service life and mechanical failures. When utilizing hubs, wheels or bearings not supplied by or recommended by Hendrickson or when replacing Hendrickson-supplied hubs and/or bearings with components not supplied by Hendrickson, it is the buyer's responsibility to consult with the suppliers of those components and all associated supplier literature to assure that the rated capacity of the axle and suspension system or its sub-assemblies will not be exceeded.

**Hendrickson Customer Service:** If you have questions about this Ordering Guide or the **EX Non-Steer Lift Axle** for trailer applications, please contact Hendrickson Technical Services by phone 800.660.2829 or e-mail: [liftaxletech@hendrickson-intl.com](mailto:liftaxletech@hendrickson-intl.com).

**Hendrickson Genuine Parts:** For long service life and optimal performance, use only **Hendrickson Genuine Parts** when servicing your lift-axle suspensions system.

[www.hendrickson-intl.com](http://www.hendrickson-intl.com)

**HENDRICKSON AUXILIARY AXLE SYSTEMS**

277 North High Street  
Hebron, OH 43025 USA  
800.660.2829 Fax 740.929.5601  
Customer Service: [liftaxle@hendrickson-intl.com](mailto:liftaxle@hendrickson-intl.com)  
Tech Support/Warranty: [liftaxletech@hendrickson-intl.com](mailto:liftaxletech@hendrickson-intl.com)

*for* **ENGINEERED  
EFFICIENCY**

**Hendrickson Canada**

250 Chrysler Drive, Unit #3  
Brampton, ON Canada L6S 6B6  
800.668.5360  
905.789.1030 • Fax 905.789.1033