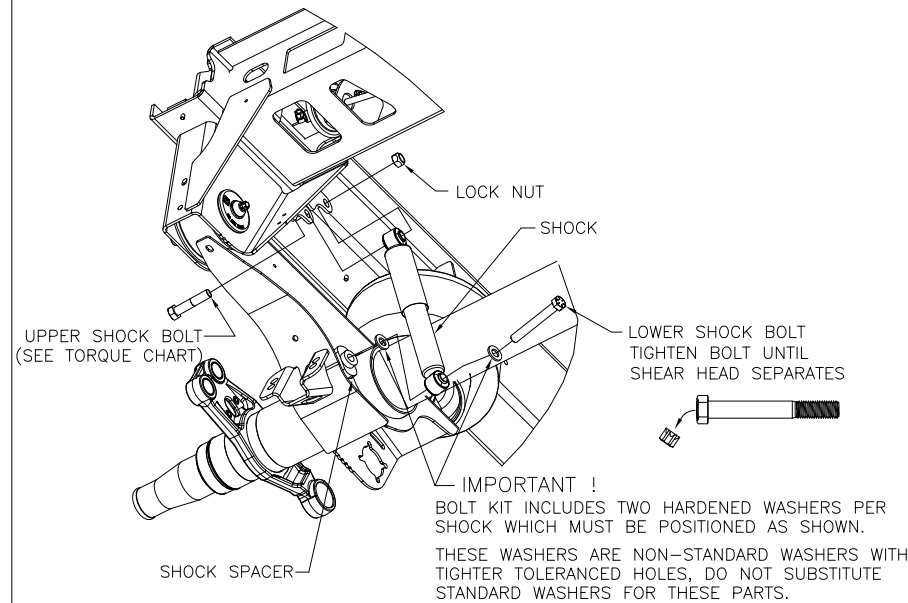
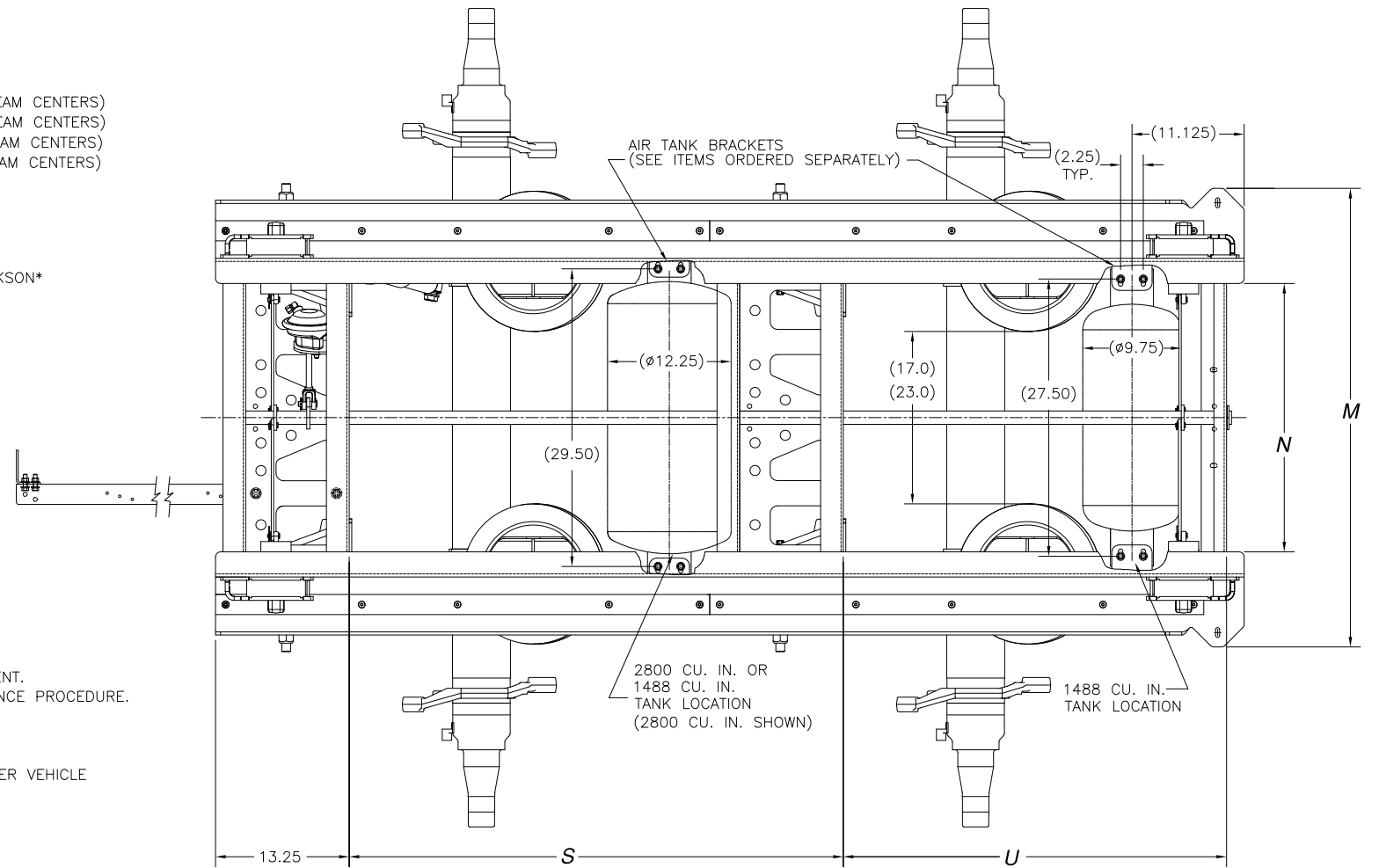


SHOCK INSTALLATION



ITEMS ORDERED SEPARATELY, SHIPPED LOOSE

- 1. SPRAY GUARD MOUNTING ANGLE KIT:**
P/N S-22428-2 (37" & 38" I-BEAM CENTERS)
P/N S-22428-8 (43" & 44" I-BEAM CENTERS)
- 2. AIR TANK MOUNTING BRACKET KITS: (SEE PAGE 2)**
P/N S-27011-1 2800 CU. IN. TANK, (37" & 38" I-BEAM CENTERS)
P/N S-27011-2 2800 CU. IN. TANK, (43" & 44" I-BEAM CENTERS)
P/N S-27011-3 1488 CU. IN. TANK, (37" & 38" I-BEAM CENTERS)
P/N S-27011-4 1488 CU. IN. TANK, (43" & 44" I-BEAM CENTERS)
- 3. STINGER:**
S-27028-1 23.75 INCH (SHOWN PAGE 2)
- 4. SLIDER LOCATING BAR:**
LOCATING BAR NOT AVAILABLE FROM HENDRICKSON



TORQUE SPECIFICATIONS		
DESCRIPTION	SIZE	TORQUE (FT-LB)
SHOCK BOLT, UPPER	3/4-10	210-235
SHOCK BOLT, LOWER	3/4-10	210-235
AIR SPRING NUTS, UPPER	3/4-16	80-100
AIR SPRING NUT, LOWER	1/2-13	55-60
S-CAM BEARING BOLTS	3/8-16	35-45
BRAKE CHAMBER MTG. NUTS	5/8-11	100-110
AIR ACTUATOR VALVE MTG. BOLTS	1/4-20	09-13
SPRAY GUARD BRACKET BOLTS	3/8-16	35-45
LOCK PIN BOX BOLTS	5/8-11	200-220
AIR ASSIST CHAMBER MTG. BOLTS	7/16-14	32-38
ACTUATOR AIR LINE FITTINGS	-----	25 MAX.
STINGER MTG. BOLTS	1/2-13	70-80
STINGER AIR LINE BRACKET	3/8-16	35-45
AIR TANK BRACKET BOLTS	3/8-16	35-45
AIR ASSIST CHAMBER JAM NUT	1/2-13	20-30

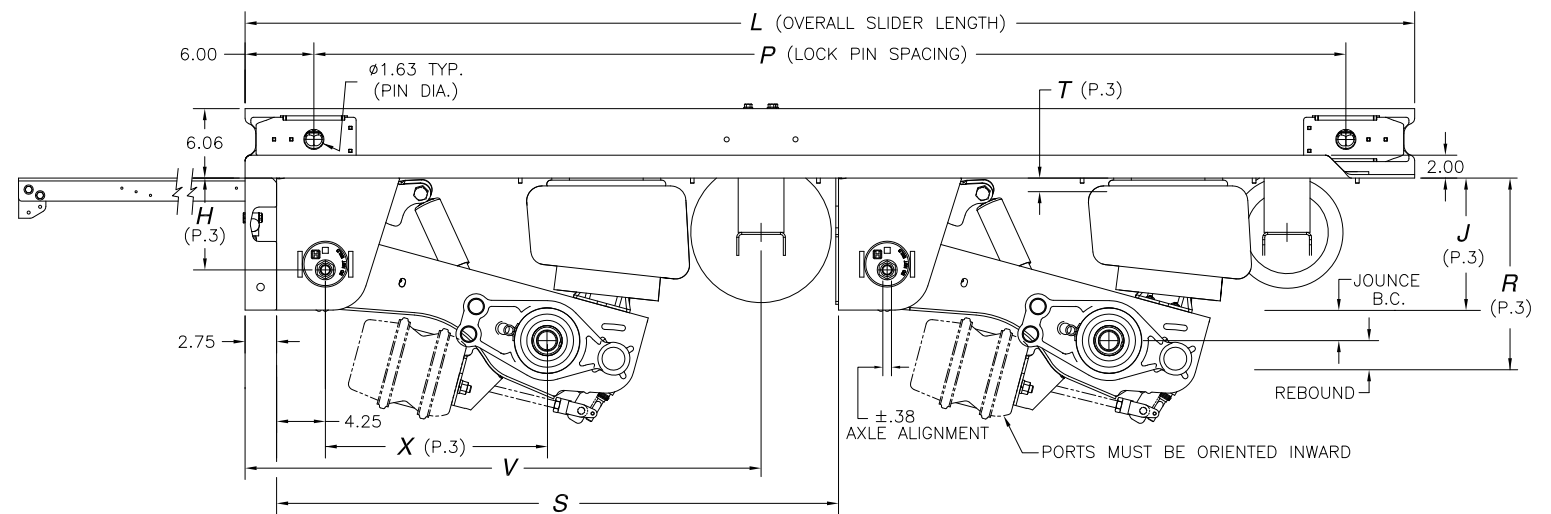
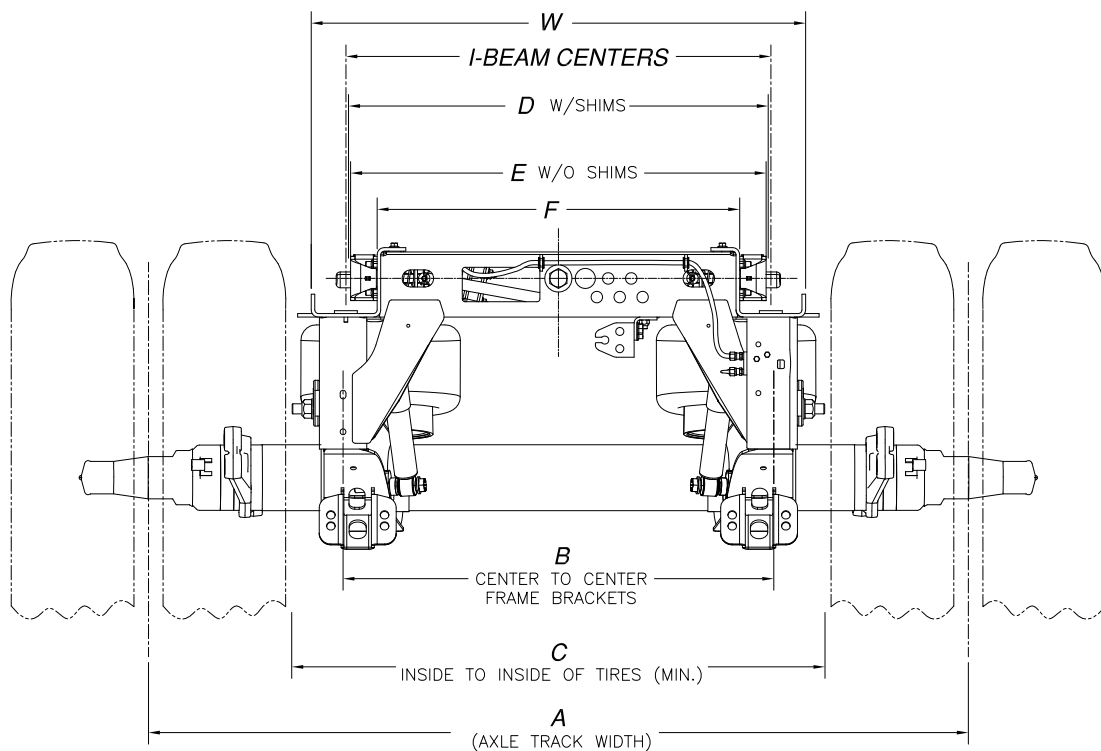
- NOTES:**
- SEE L-341 INTRAAX® INSTALLATION INSTRUCTIONS FOR INFORMATION ON ASSEMBLY, WELDING PROCEDURE, AND ALIGNMENT.
 - SEE SERVICE MANUAL FOR INFORMATION CONCERNING MAINTENANCE PROCEDURE.
 - SEE L-1182 FOR HEIGHT CONTROL KIT OPTIONS.
 - DO NOT WELD ON AXLE TUBE.
 - DO NOT WELD ON SLIDER BOX.
 - IT IS THE RESPONSIBILITY OF THE INSTALLER TO ENSURE PROPER VEHICLE FRAME DESIGN IN THE AREA OF SLIDER ATTACHMENT.

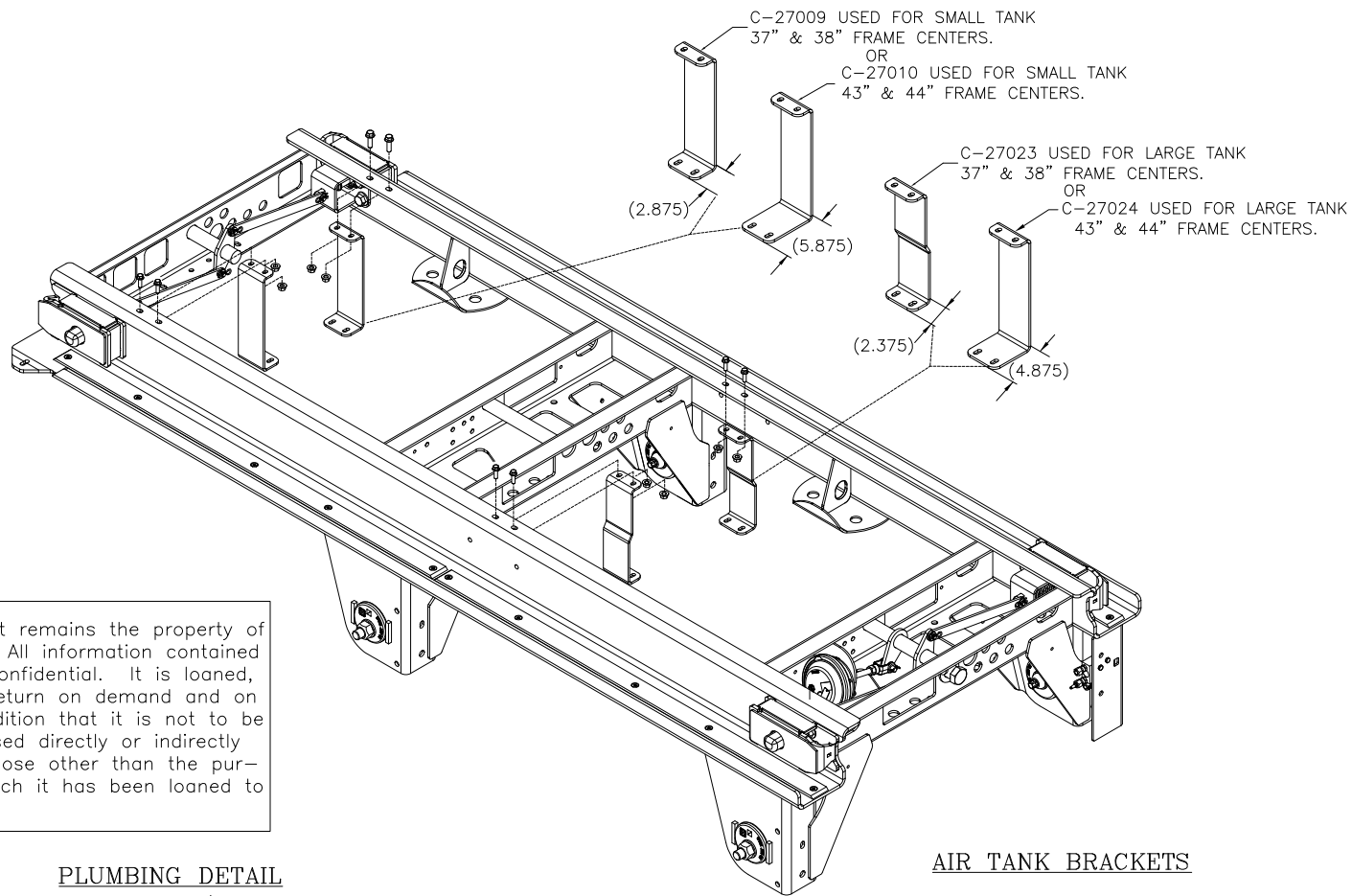
- CLEARANCE SPECIFICATIONS:**
- 1.0 INCH MINIMUM CLEARANCE REQUIRED BETWEEN TOP OF TIRE AND BOTTOM OF TRAILER STRUCTURE WHEN AXLE IS AT FULL JOUNCE.
 - 2.0 INCHES MINIMUM CLEARANCE REQUIRED BETWEEN INSIDE OF TIRE AND TRAILER STRUCTURE FOR TIRE AND LATERAL MOVEMENT.
 - .75 INCH MINIMUM CLEARANCE MUST BE MAINTAINED AROUND AIR SPRING WHEN IT IS AT MAXIMUM DIAMETER.

I-BEAM CENTERS	SLIDER/ SUSPENSION WIDTH DIMENSIONS (INCHES)								
	A	B	C	D	E	F	M	N	W
37"	71.5	37.5	46.50	36.61	36.25	31.63	45.50	26.63	43.13
38"	71.5	37.5	46.50	37.61	37.25	32.63	46.50	27.63	44.13
43"	77.5	43.5	52.50	42.61	42.25	37.63	51.50	32.63	49.13
44"	77.5	43.5	52.50	43.61	43.25	38.63	52.50	33.63	50.13

AXLE SPACING	SLIDER LENGTH DIMENSIONS (INCHES)				
	L	P	S	U	V
49"	102.0	90.0	49.0	38.0	45.0
60"	114.0	102.0	60.0	39.0	56.0
72"	126.0	114.0	72.0	39.0	63.0

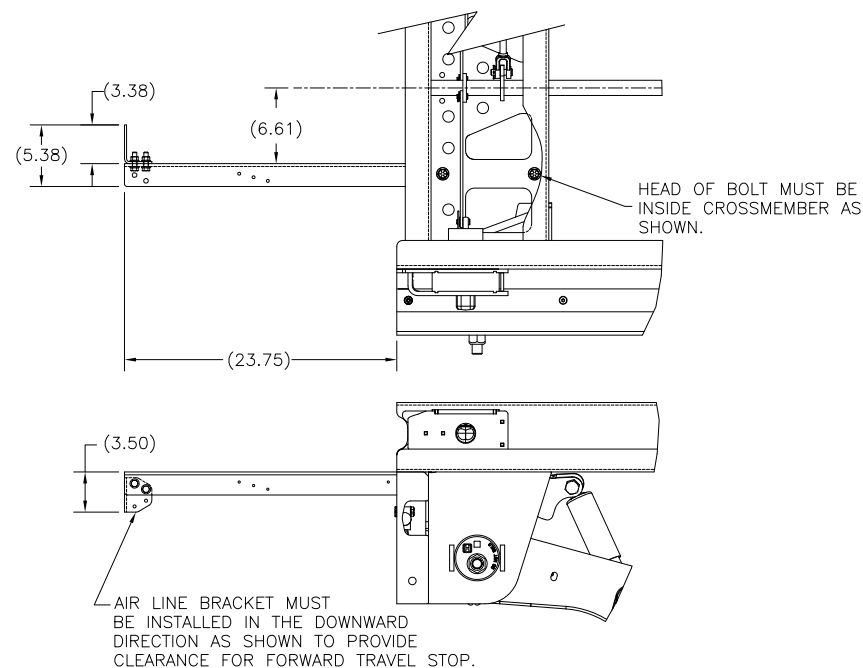
This Print remains the property of Hendrickson. All information contained hereon is confidential. It is loaned, subject to return on demand and on express condition that it is not to be copied or used directly or indirectly for any purpose other than the purpose for which it has been loaned to you.





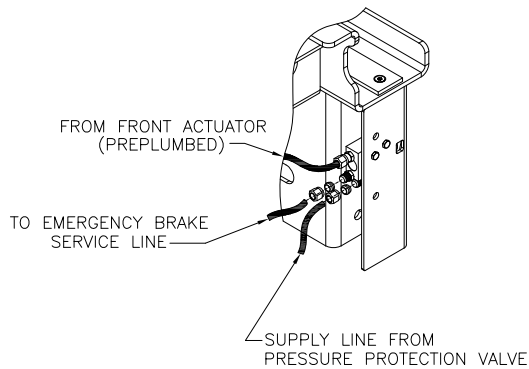
AIR TANK BRACKETS

STINGER INSTALLATION



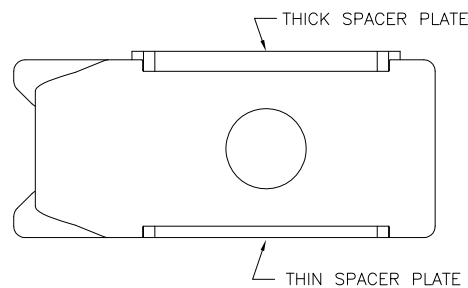
This Print remains the property of Hendrickson. All information contained thereon is confidential. It is loaned, subject to return on demand and on express condition that it is not to be copied or used directly or indirectly for any purpose other than the purpose for which it has been loaned to you.

PLUMBING DETAIL

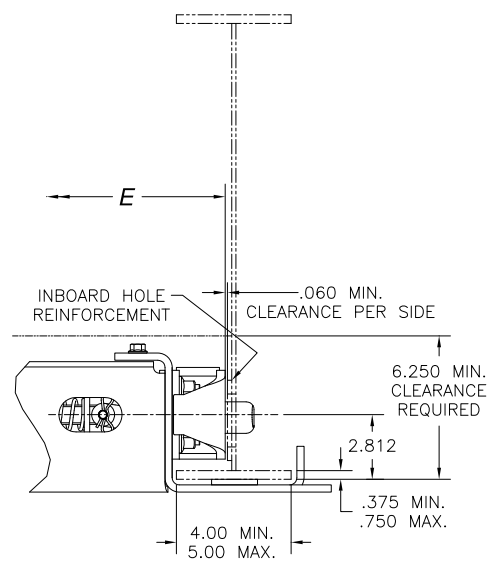


PIN CAGE PLACEMENT

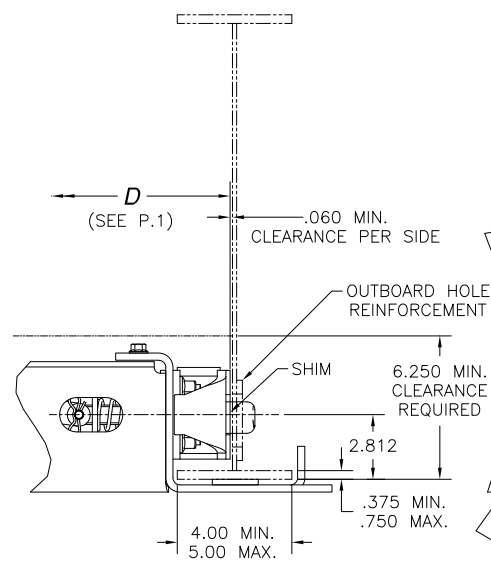
- NOTE:
- PIN CAGES HAVE A THICK SPACER PLATE AND A THIN SPACER PLATE:
 THE THICK SPACER PLATE MUST BE DOWN WHEN BOTTOM FLANGE OF TRAILER I-BEAM IS .500 THK. OR LESS.
 THE THIN SPACER PLATE MUST BE DOWN WHEN BOTTOM FLANGE OF TRAILER I-BEAM IS GREATER THAN .500 THK. BUT DOES NOT EXCEED .750 THK.
 - IF NEEDED AND PIN CAGES NEED FLIPPED.
 WHEN GOING FROM ONE THICKNESS TO THE OTHER, THE FRONT PIN CAGE IS FLIP AND MOVED TO THE REAR PIN CAGE LOCATION.
 THE REAR PIN CAGE IS FLIPPED AND MOVED TO THE FRONT PIN CAGE LOCATION.



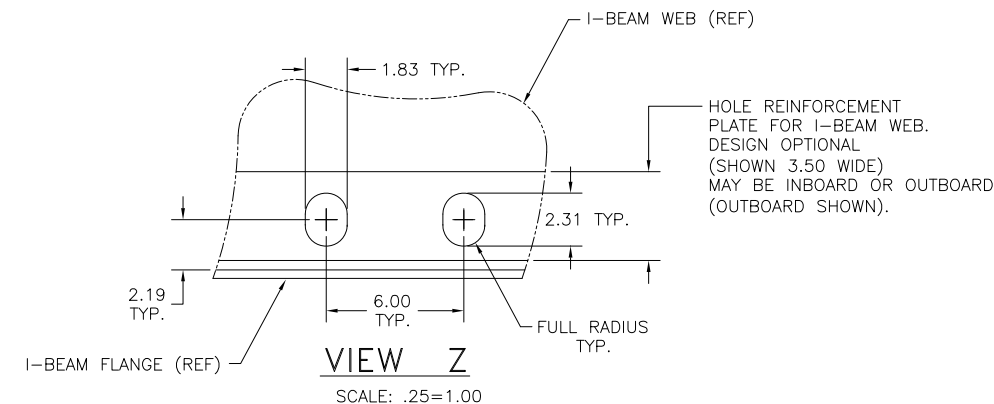
TRAILER FRAME REQUIREMENTS



FRONT VIEW
 INBOARD HOLE REINFORCEMENTS
 SCALE: .25=1.00
 ORDER SLIDER WITH NO SHIMS ON OUTER LOCK PIN CAGES.

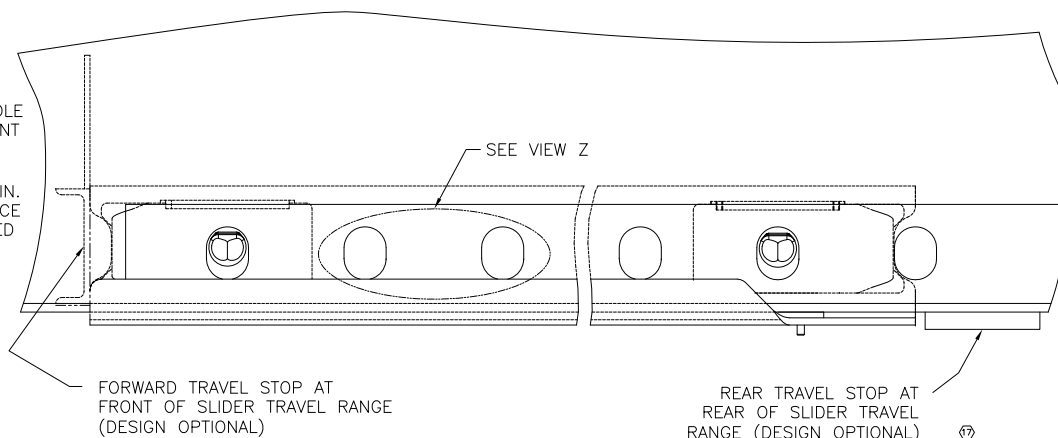


FRONT VIEW
 OUTBOARD HOLE REINFORCEMENTS
 SCALE: .25=1.00
 ORDER SLIDER WITH SHIMS ON OUTER LOCK PIN CAGES.







RECOMMENDED I-BEAM POSITIONING HOLE DESIGN

NOTE: HORIZONTAL DIMENSIONS MUST BE MAINTAINED AS SHOWN. VERTICAL DIMENSIONS SHOWN ARE OPTIONAL, BUT ARE RECOMMENDED FOR THE FOLLOWING REASONS:
 A) ALLOWS HOLE POSITION ON WEB TO BE IDENTICAL FOR ANY FLANGE THICKNESS FROM 3/8" TO 3/4".
 B) ALLOWS DIRECT CONTACT BETWEEN I-BEAM FLANGE AND BOTTOM SIDE OF OUTER LOCK PIN CAGES WHEN TRAILER IS LIFTED BY FRAME.



P PRODUCTION	PART NO.	REV
	DWG-D-27108	17

DIMENSION FROM PAGE 1

RISE HEIGHT	 JOUNCE	 REBOUND	BUMPER CONTACT	T	H	X	 J	 R	** SUSPENSION WEIGHT (LB)
13.5	3.1	5.5	2.5	-	8.0	19.5	10.4	19.0	355.04
14.0	3.6	5.0	3.0	-	8.0	19.4	10.4	19.0	355.04
15.0	3.6	4.0	3.0	-	8.0	19.1	11.4	19.0	359.28
16.0	3.6	4.9	3.1	-	10.0	19.4	12.4	20.9	362.40
17.0	3.7	3.9	3.1	1.125	10.0	19.1	13.3	20.9	368.49

* BOX WEIGHT INCLUDES: SLIDER BOX WELDMENT WITH FRAME BRACKETS, LOCK PINS AND ALL PIN PULL COMPONENTS (INCLUDING ACTUATOR VALVE, FITTINGS, ETC.) AND NO SHIMS (FOR TRAILERS WITH INTERNAL WEB REINFORCEMENT AT LOCK PIN HOLES).

** SUSPENSION WEIGHT INCLUDES: BEAMS, BUSHINGS, AXLE WRAPS, PIVOT CONNECTION COMPONENTS, AIR SPRING COMPONENTS AND SHOCK ABSORBER COMPONENTS. WEIGHT IS TOTAL FOR TWO SUSPENSIONS.

*** AXLE WEIGHT INCLUDES: AXLE TUBE, SPINDLES, SPIDERS, STANDARD 16.5" X 7" BRAKE COMPONENTS, AND AXLE NUT KIT (BRAKE CHAMBERS AND SLACK ADJUSTERS NOT INCLUDED). WEIGHT IS TOTAL FOR TWO AXLES.

**** OPTION WEIGHT TABLE IS NOT ALL-INCLUSIVE; MANY ADDITIONAL OPTIONS ARE AVAILABLE. CONTACT HENDRICKSON ENGINEERING FOR WEIGHTS OF OPTIONS NOT LISTED IN CHART.

*** AXLE WEIGHT (LB)			
AXLE WALL		STANDARD	
I-BEAM CENTERS		37" & 38"	43" & 44"
SPINDLE TYPE	HN	504.96	523.52
	HP	513.88	532.52

* SLIDER BOX WEIGHT (LB)												
RISE HEIGHT	49" TANDEM				60" TANDEM				72" TANDEM			
	I-BEAM CENTERS				I-BEAM CENTERS				I-BEAM CENTERS			
	37"	38"	43"	44"	37"	38"	43"	44"	37"	38"	43"	44"
13.5												
14.0	579.71	583.51	602.68	606.50	613.23	617.03	636.20	640.02	646.77	650.57	669.74	673.56
15.0												
16.0	593.95	597.75	616.92	620.74	627.47	631.27	650.44	654.26	661.01	664.81	683.98	687.80
17.0												

**** OPTION WEIGHT ADDITION (LB)		
OPTIONAL COMPONENT	I-BEAM CENTERS	
	37" & 38"	43" & 44"
SHIMS ON BOX (FOR EXTERNAL WEB HOLE REINFORCEMENT)	5.72	
16.5" X 7" HXS BRAKES	8.08	
16.5" X 8.625" HXS BRAKES	31.20	
EXTENDED SERVICE/HIGH-DAMPING SHOCKS	5.40	
LOW-PRESSURE AIR SPRINGS	15.20	
SEALED CLAMP-ON DUST SHIELDS	29.20	
SHOCK STRAPS	1.80	
HALDEX BRAKE CHAMBERS (STD. STROKE)	81.40	
HALDEX BRAKE CHAMBERS (LONG STROKE)	88.16	
HALDEX BRAKE CHAMBERS (LONG STROKE, EXTENDED WARRANTY)	88.68	
HALDEX SLACK ADJUSTERS (5.5" OR 6.0" LG.)	28.08	
AKHO270-3 HCV KIT (BOLTED LINK)	3.06	
STINGER KIT (23.75" LG)	10.02	
MUD FLAP MTG. ANGLE KIT	23.80	25.30
AIR TANK BRACKET KIT (2800 C.I. TANK)	7.54	8.80
AIR TANK BRACKET KIT (1488 C.I. TANK)	7.74	9.32

NOTES:

- TO OBTAIN TOTAL SYSTEM WEIGHT, ADD ONE ITEM EACH FROM SLIDER BOX, SUSPENSION & AXLE WEIGHT TABLES, PLUS ALL APPLICABLE OPTION WEIGHTS FROM OPTION WEIGHT TABLE.
- CONTACT HENDRICKSON FOR ALLOWABLE RIDE HEIGHT RANGES.


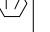


JOUNCE AND REBOUND DIMENSIONS CHANGE AS THE RIDE HEIGHT CHANGES FROM THE NOMINAL POSITION.



DIMENSIONS "J" & "R" WILL REMAIN CONSTANT REGARDLESS OF RIDE HEIGHT VARIATION FROM NOMINAL POSITION.

This Print remains the property of Hendrickson. All information contained thereon is confidential. It is loaned, subject to return on demand and on express condition that it is not to be copied or used directly or indirectly for any purpose other than the purpose for which it has been loaned to you.

	PART NO.	* REV		P
	DWG-D-27108	17		PRODUCTION