

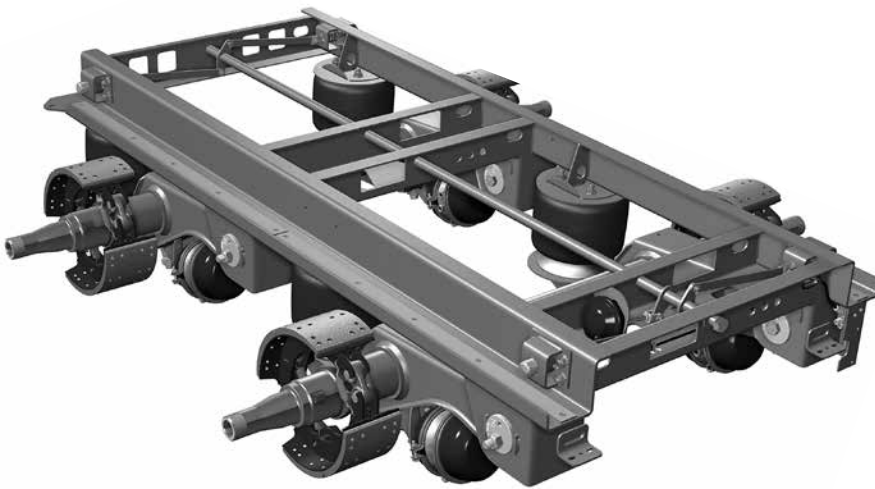
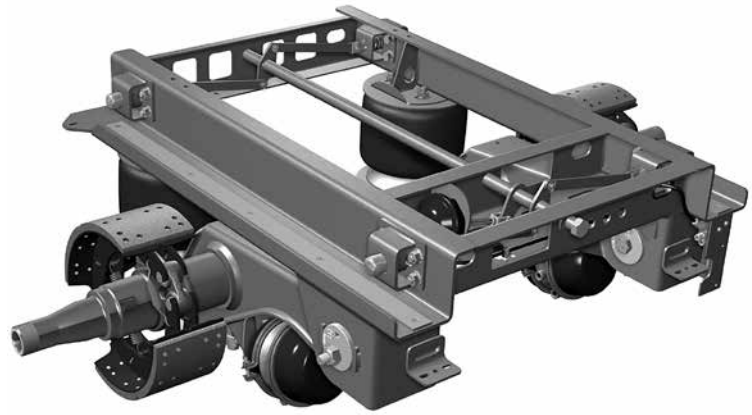
H PARTS LIST

INTRAAX®-SP Platform Slider
AAZL 23K Single / 46K Tandem

LIT NO: L931

DATE: December 2016

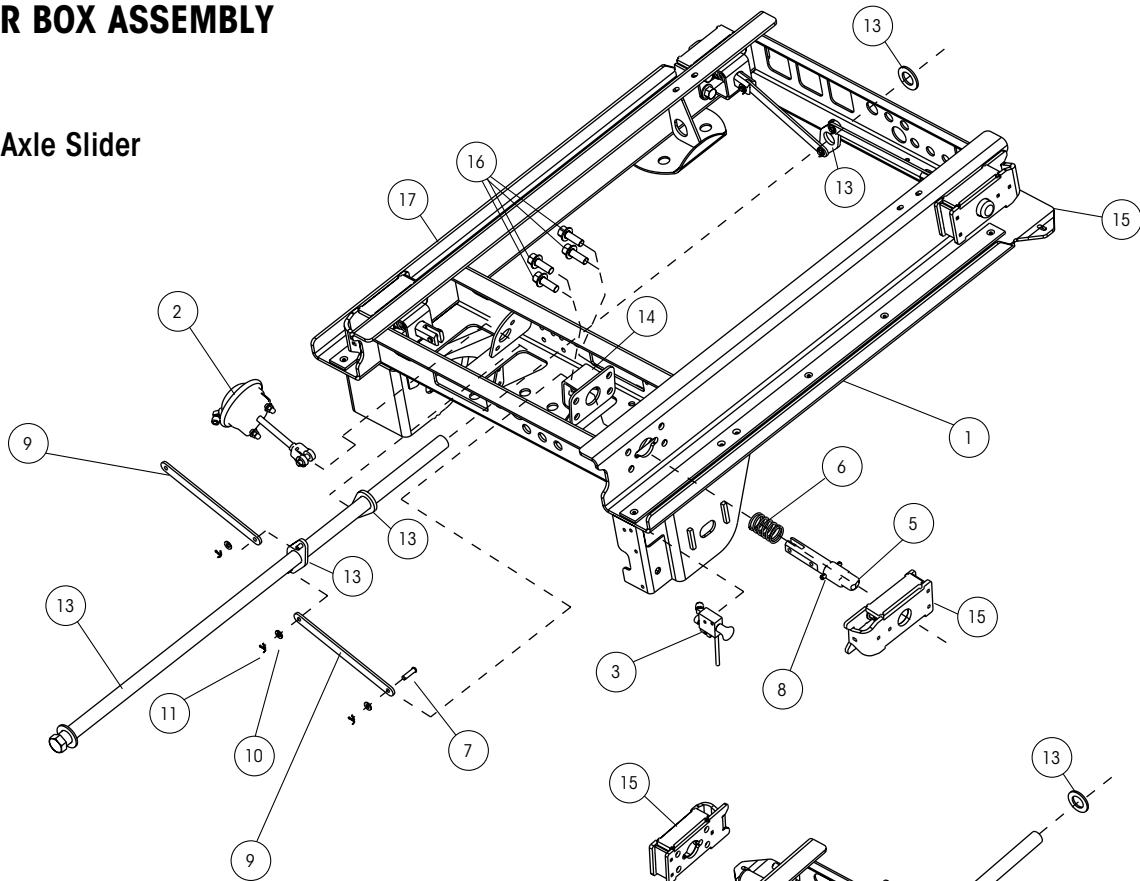
REVISION: C



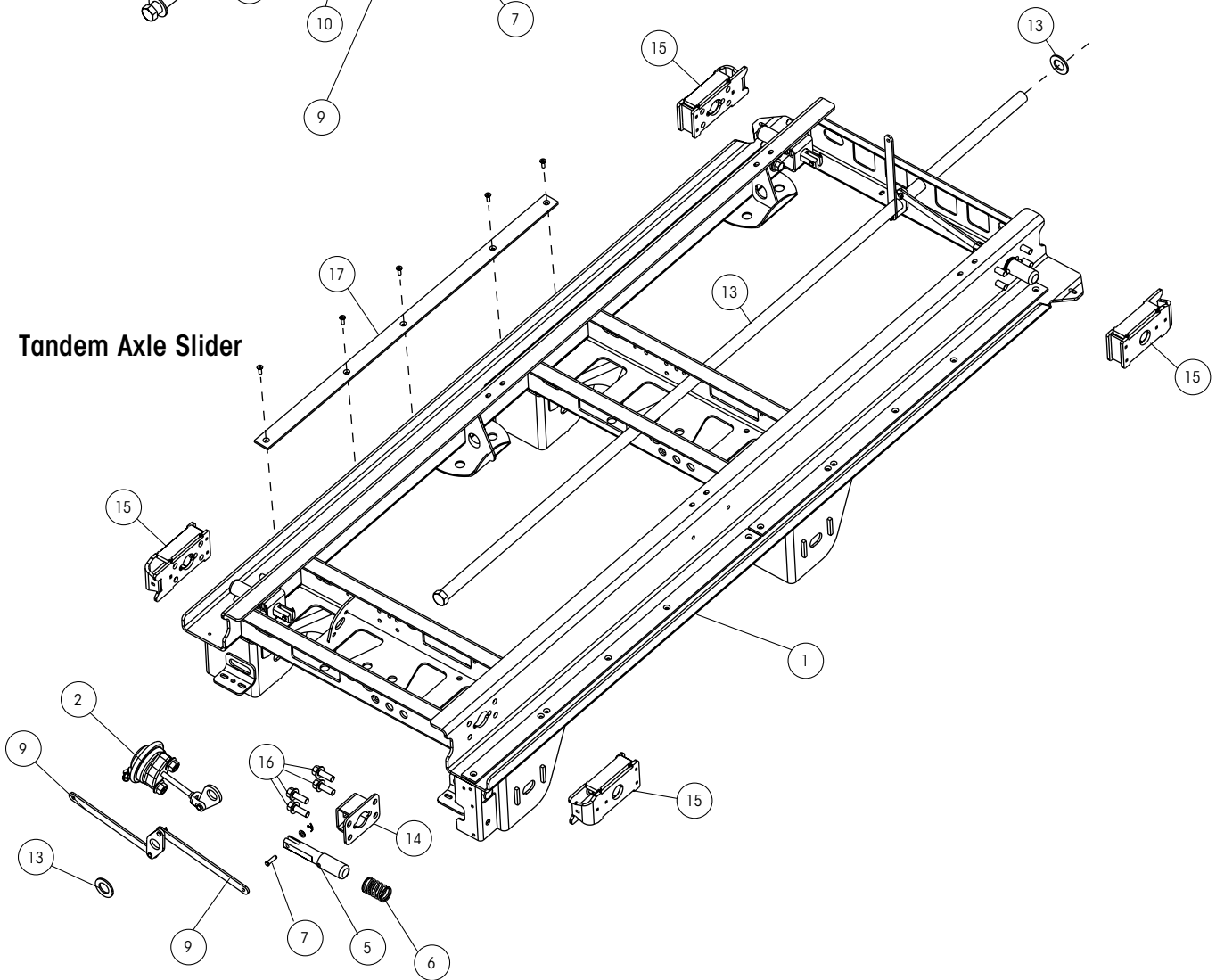


SLIDER BOX ASSEMBLY

Single Axle Slider



Tandem Axle Slider





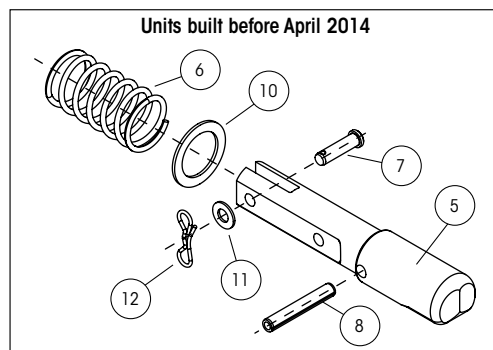
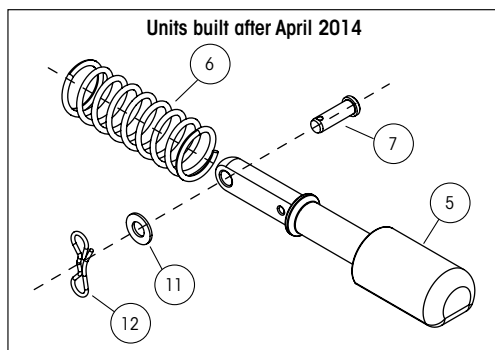
SLIDER BOX ASSEMBLY

All suspensions are 23K capacity; system capacity for tandem is 46K.
 I-beam centers are 37" and 38" for 42" box width with 71.5" axle track.
 I-beam centers are 43" and 44" for 48" box width with 77.5" axle track.
 Axle spacing or "spread" is measured from center of front axle to center of rear axle.

ITEM	DESCRIPTION	PART NO.	TANDEM SYSTEM QTY.	NOTE
1	AFTERMARKET SLIDER BOX REPLACEMENT	AMBOX.XX	1	Please contact Hendrickson for assistance
2	BRAKE CHAMBER	A-23039	1	Type 12 modified
3	QUIK-DRAW® VALVE			See L751 QUIK-DRAW® Parts List
4	QUIK-DRAW VALVE KNOB with SCREW SET (Not shown)			See L751 QUIK-DRAW Parts List
5	LOCKING PIN			See L751 QUIK-DRAW Parts List
6	LOCKING PIN SPRING			See L751 QUIK-DRAW Parts List
7	CLEVIS PIN			See L751 QUIK-DRAW Parts List
8	SPRING PIN			See L751 QUIK-DRAW Parts List
9	LOCKING PIN LINK			See L751 QUIK-DRAW Parts List
10	LOCKING PIN WASHER			See L751 QUIK-DRAW Parts List
11	PIN WASHER			See L751 QUIK-DRAW Parts List
12	LOCKING PIN LINK COTTER PIN			See L751 QUIK-DRAW Parts List
13	PIPE WELDMENT KIT			Includes pipe weldment, crank weldment, crank arm actuator and pipe ring stop
	Single Axle	S-28044-1	1	51" weldment
	Tandem, 49" Axle Spread	S-28044-2	1	99" weldment
	Tandem, 60" Axle Spread	S-28044-3	1	111" weldment
	Tandem, 72" Axle Spread	S-28044-4	1	123" weldment
14	INNER LOCK PIN CAGE ASSEMBLY	S-27000	4	
15	OUTER LOCK PIN CAGE REPLACEMENT KITS			
	No Shims, Per Slider	S-28658-1	1	Includes (4) pin cages and (16) bolts
	With Outer Shims, Per Slider	S-28658-2	1	Includes (4) pin cages and (16) bolts
	No Shims, front	S-28658-3	2	Includes (1) curbside and (1) roadside cage and bolts
	With Outer Shims, Rear	S-28658-4	2	Includes (1) curbside and (1) roadside cage and bolts
16	PIN CAGE BOLT (Bolts are Included in Kits)	SA-6900-20	16	Four (4) per cage, (16) per slider
17	SLIDER WEAR PAD KIT	S-28641	1	Quantity of (1) needed for single; (2) needed for tandem. Includes (2) 49" pads and (10) screws
18	STINGER (Not Shown)			

NOTE: Identification tag can be found on the roadside slider box rail above the front frame bracket gusset. There is also a blank INTRAAX® tag on the inside of the curbside beam.

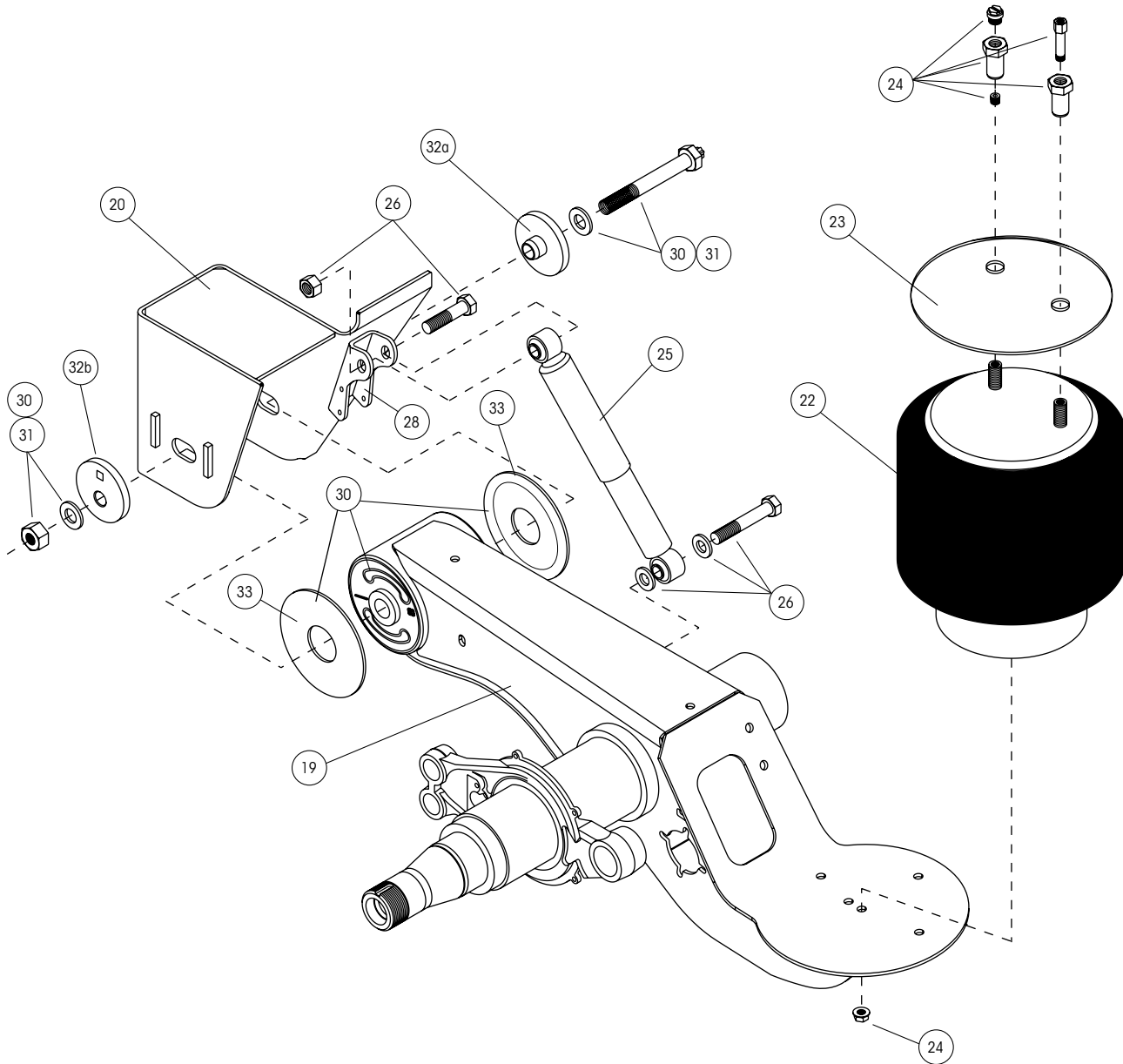
SLIDER PINS





LOW-RIDE SUSPENSION ASSEMBLY - AAZL

Wide Frame Bracket Assembly, Straight Beam





LOW-RIDE SUSPENSION ASSEMBLY — AAZL

All low-ride suspensions are wide frame bracket and wide beam assemblies.
 All suspensions are 23K capacity; system capacity for tandem is 46K.
 Low-ride ride heights are 6.5" - 12".

ITEM	DESCRIPTION	PART NO.	QTY. PER		NOTE
			AXLE		
19	AXLE/BEAM WELDMENT	HTRAAX.XXX			Contact Hendrickson for assistance
20	FRAME BRACKET				See L1266 Frame Bracket Parts List
21	FRAME BRACKET GUSSET (Not Shown)	S-27330	2		For weld-on, winged or wingless frame attachments; for ride heights of 12" to 17"
22	AIR SPRING				
	Standard	S-23720	2		6.5" - 7.5" ride height
		S-23613	2		8" - 9" ride height
		S-23614	2		12" ride height
	Low Pressure	S-23721	2		6.5" - 7.5" ride height
		S-23611	2		8" - 9" ride height
		S-23612	2		12" ride height
23	AIR SPRING MOUNTING PLATE	S-23294	2		
24	AIR SPRING MOUNTING KIT	S-22619/2	2		(1) kit is required per air spring
25	SHOCK ABSORBER				
	Standard Travel	S-23651	2		6.5" - 9" ride height
		S-23566	2		12" ride height
	Extended Service with High Damping	S-24579	2		6.5" - 9" ride height
		S-24023	2		12" ride height
26	FRONT SHOCK ABSORBER BOLT KIT (Per Shock)				
		5-inch	LDA™		
		S-24757/2	S-31080	2	(1) required per shock
27	SHOCK SPACER (Not Shown)	A-30202-1	2		LDA only
28	SHOCK MOUNT CLEVIS	C-20918	2		
29	SHOCK STRAP KIT (Not Shown)				Includes (2) straps, (2) clevis and nylon ties
	Standard Shock	C-23086-4	1		6.5" - 9" ride height; Use with S-23651 shock
		C-23086-1	1		12" ride height; Use with S-23566 shock
	Extended Service with High Damping	C-23086-8	1		6.5" - 9" ride height; Use with S-24579 shock
		C-23086-2	1		12" ride height; Use with S-24023 shock
30	TRI-FUNCTIONAL® BUSHING KIT¹	S-24691	2		Includes (1) TRI-FUNCTIONAL bushing, (1) pivot bolt kit, (2) bushing tube spacers and lube packet

1. Bushing tool, S-21307 is required to properly re-bush the suspension.

