

# **H** PARTS LIST

VANTRAX<sup>®</sup> HKARL 46K  
RAMP READY

LIT NO: L1078

DATE: October 2016

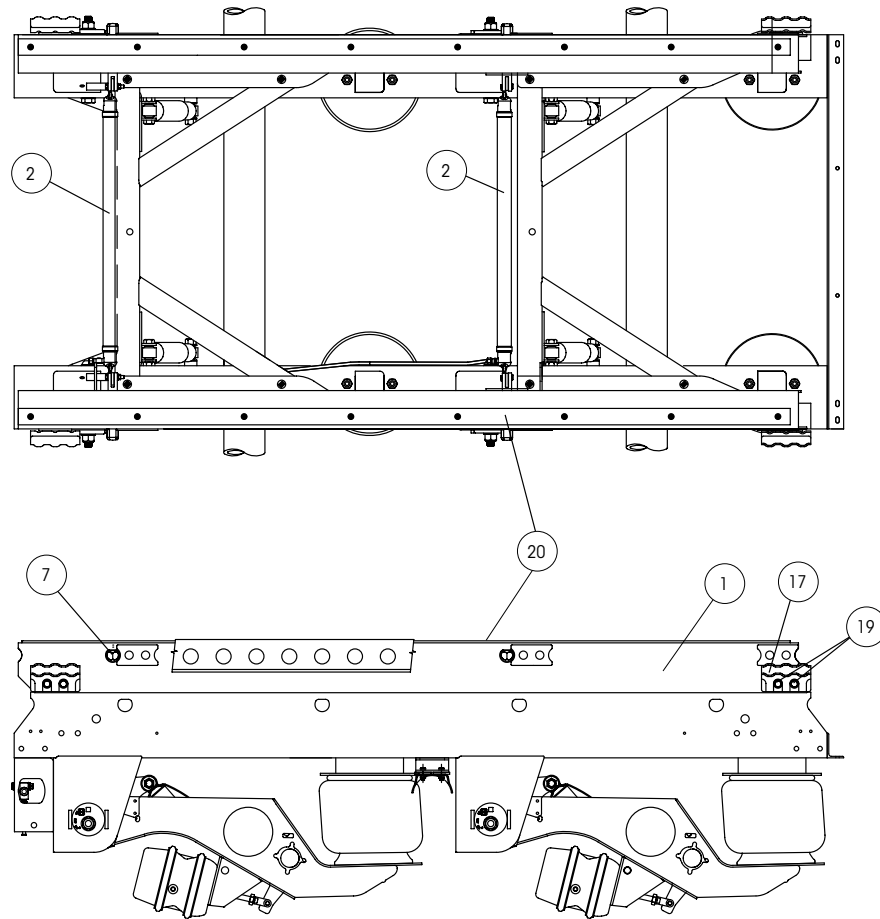
REVISION: E

---



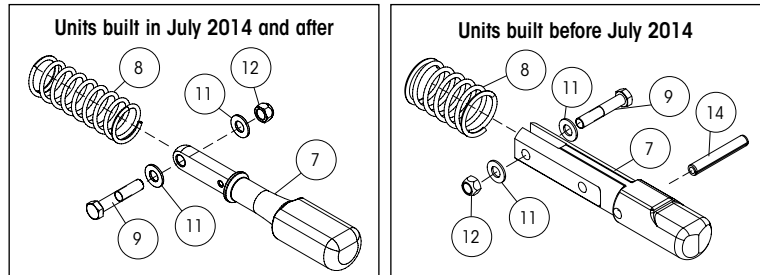
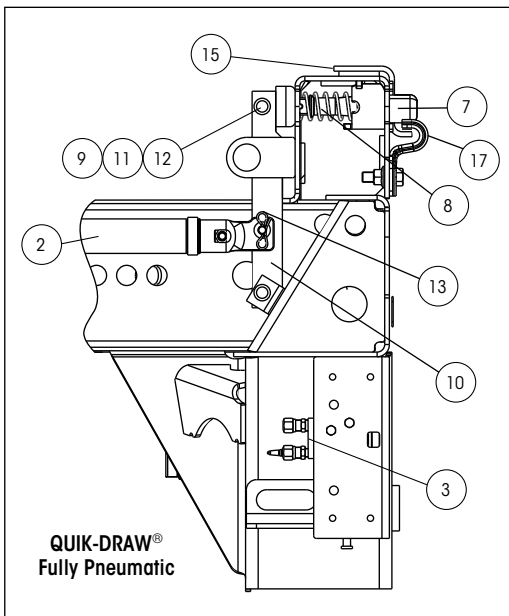


**SLIDER BOX ASSEMBLY**

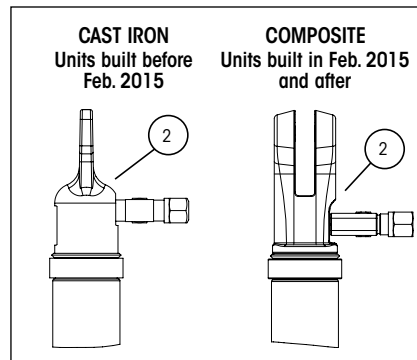


**SLIDER PINS**

**PIN-PULL RELEASE MECHANISM**



**QUIK-DRAW® ACTUATOR ENDS**

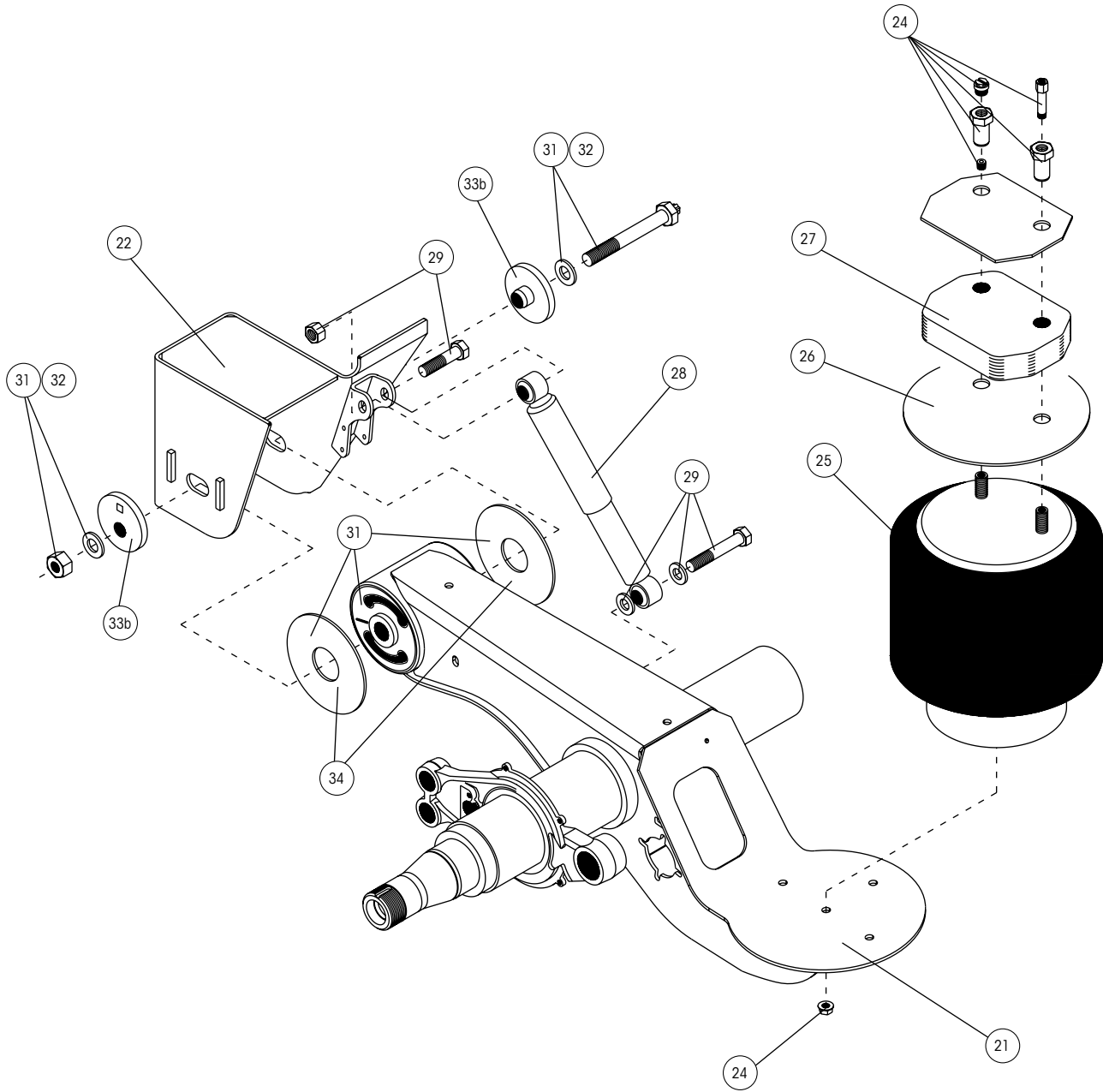




# VANTRAA<sup>®</sup> HKARL 46K RAMP READY SLIDER PARTS LIST

ITEM	DESCRIPTION	PART NO.	SYSTEM QTY.	NOTE
1	AFTERMARKET SLIDER BOX REPLACEMENT	AMBOX.###	1	Contact Hendrickson for assistance
2	QUIK-DRAW <sup>®</sup> PNEUMATIC PIN-PULL MECHANISM			See L751 QUIK-DRAW Parts List
3	QUIK-DRAW VALVE			See L751 QUIK-DRAW Parts List
4	CRANK ARM (not shown)	B-24267	1	
5	CRANK (not shown)	B-24266	2	
6	ARM ACTUATOR (not shown)	B-24437	1	
7	LOCKING PIN			See L751 QUIK-DRAW Parts List
8	LOCKING PIN SPRING			See L751 QUIK-DRAW Parts List
9	LOCKING PIN BOLT			See L751 QUIK-DRAW Parts List
10	LOCKING PIN LINK			See L751 QUIK-DRAW Parts List
11	LOCKING PIN WASHER			See L751 QUIK-DRAW Parts List
12	LOCKING PIN NUT			See L751 QUIK-DRAW Parts List
13	LOCKING COTTER PIN			See L751 QUIK-DRAW Parts List
14	SPRING PIN (Units built before Sept. 2012)			See L751 QUIK-DRAW Parts List
15	PIPE WELDMENT (not shown)	S-21433-1	1	
16	LINK WELDMENT (not shown)	B-24413	1	
17	BODY RAIL CLIP			
		S-24460	4	Use with 1.375" locking pin with 6" hole centers
		S-24459	4	Use with 1.625" locking pin with 4" hole centers
		S-24459	4	Use with 1.375" locking pin with 4" hole centers (TTMA)
18	BODY RAIL CLIP SPACER (not shown)	A-22367	4	
19	BODY RAIL CLIP BOLTS	SA-6900-2	8	1/2" - 13 flanged screw
20	SLIDER WEAR PAD KIT	S-14342-3	2	Includes (1) slider wear pad and screws

Note: Identification can be found on the roadside slider box rail above the front frame bracket there will also be a blank VANTRAA tag on the inside of the curbside beam.





# VANTRAA<sup>®</sup> HKARL 46K RAMP READY SLIDER PARTS LIST

ITEM	DESCRIPTION	PART NO.	SYSTEM QTY.	NOTE
21	AXLE BEAM WELDMENT	HTRAAX.###	2	Contact Hendrickson for assistance
22	FRAME BRACKETS			See L1266 Frame Bracket Parts List
23	ABS WELD-ON BRACKET (not shown)	S-27117	4	
24	AIR SPRING MOUNTING KIT	S-22631/2	4	A-22490-5 also required for 9" RH
25	AIR SPRING		4	
	9", 10" and 11" ride height	S-23613	4	
	12" ride height	S-23614	4	
26	AIR SPRING MOUNTING PLATE	S-23294	4	
27	AIR SPRING SPACER	B-22510-2	4	Not required for 9" RH
28	SHOCK ABSORBER			
	Drum Brakes	S-23566	4	
	Air Disk Brakes (not shown)	S-25436	4	
29	SHOCK BOLT KIT	S-24757/2	4	Includes (2) hardened washers, (1) shear type bolt, (1) shock spacer and hardware
30	SHOCK STRAP KIT (not shown)	C-23086-1	4	Includes (2) straps, clevis and ties
31	TRI-FUNCTIONAL <sup>®</sup> PIVOT BUSHING KIT <sup>1</sup>	S-24691	4	Includes (1) bushings, (1) pivot bolt kits (2) bushing tube spacers and lubricant pack
32	QUIK-ALIGN <sup>®</sup> PIVOT BOLT KIT	S-24679	4	Contains 7" bolt, nut and hardened washers
33	ALIGNMENT COLLAR			
	33a Concentric (inner)	S-20924	4	Pivot bolt hole is centered
	33b Eccentric (outer)	S-20925	4	Pivot bolt hole is offset from center
34	BUSHING TUBE SPACER	S-21099	8	Inner metal outer diameter dimension of TRI-FUNCTIONAL Bushing is 2.2"; inner hole dimension of BTS is 2.38"

## OTHER PARTS LISTS

More information can be found in the following documents

Lit. Number	Description
L1055	SURELOK <sup>®</sup> Parts List
L1102	Slider Accessories and Axle Components Parts List
L949	RTR <sup>®</sup> READY-TO-ROLL <sup>®</sup> Parts List
L589	TRI-FUNCTIONAL <sup>®</sup> Bushing Replacement Tool
L1063	Air Disc Brakes Parts List
L1104	Brake Kits and Components Parts List

1. Bushing tool S-21307 is required to correctly re-bush the suspension.

Note: Identification can be found on the roadside slider box rail above the front frame bracket there will also be a blank VANTRAA<sup>®</sup> tag on the inside of the curbside beam.





