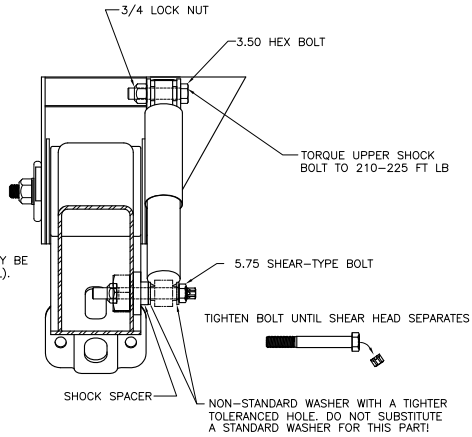


NOTES:

- SEE L-341 INTRAX® INSTALLATION INSTRUCTIONS FOR INFORMATION ON ASSEMBLY, WELDING PROCEDURE, AND ALIGNMENT.
- SEE SERVICE MANUAL FOR INFORMATION CONCERNING MAINTENANCE PROCEDURE.
- MANUFACTURED UNDER ONE OR MORE OF THE FOLLOWING PATENTS: OTHER PATENTS PENDING U.S. PATENT NOS. - 5,366,237 - 4,166,640
- REQUIRED CROSSMEMBER LOCATIONS ARE SHOWN. ACTUAL SIZE AND SHAPE MAY VARY WITH TRAILER DESIGN. IT IS THE RESPONSIBILITY OF THE SUSPENSION INSTALLER TO ENSURE STRUCTURAL ADEQUACY OF TRAILER FRAME AND CROSSMEMBERS.
- SEE L-575 FOR HEIGHT CONTROL KIT OPTIONS.
- SEE PAGE 3 FOR C-CHANNEL REQUIREMENTS.
- FOR NON HENDRICKSON SLIDER, THE OPTION OF NONE FOR FRAME ATTACHMENT SHOULD BE SELECTED. THE SUSPENSION WILL BE SHIPPED WITHOUT FRAME BRACKETS AND AIR SPRING MOUNTING PLATES. THE SPK CONTAINS FRAME BRACKETS AND AIR SPRING MOUNTING PLATES. THIS KIT IS PURCHASED SEPARATELY AND SHIPPED DIRECTLY TO THE SLIDER MANUFACTURER.
- AS AN OPTION WHEN USING 295/75R22.5 TIRES ON AAT 30K SUSPENSION, AIR SPRING BEAD PLATES MAY BE INSERT 1.00 MAXIMUM TO PROVIDE ADDITIONAL TIRE CLEARANCE (SEE OPTIONAL AIR SPRING SPACING DETAIL).
- SEE D-29431 FOR DIMENSIONS AND CROSSMEMBER LOCATIONS.
- FOR BOLT-ON MOUNTING PATTERNS, SEE DRAWING D-26651.



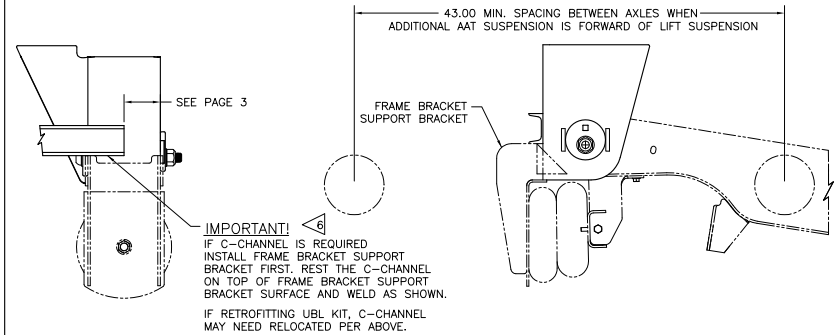
O.E.M. INSTALLED SHOCK BOLT KIT

TRACK WIDTH (IN)	71.5	77.5	73.0	83.5	85.0
DIMENSION "A" (IN)	31.00	37.00	32.50	43.00	44.50
30K W/ 295/75R22.5 TIRES	SEE OPTIONAL AIR SPRING MOUNTING				
DIMENSION "B" (IN)	35.00	41.00	36.50	47.00	48.50
DIMENSION "C" (IN)	42.25	48.25	43.75	54.25	55.75
DIMENSION "D" (IN)	46.50	52.50	48.00	58.50	60.00
30K W/ 295/75R22.5 TIRES (SEE A/S OPTION)	45.76	51.76	47.26	57.76	59.26

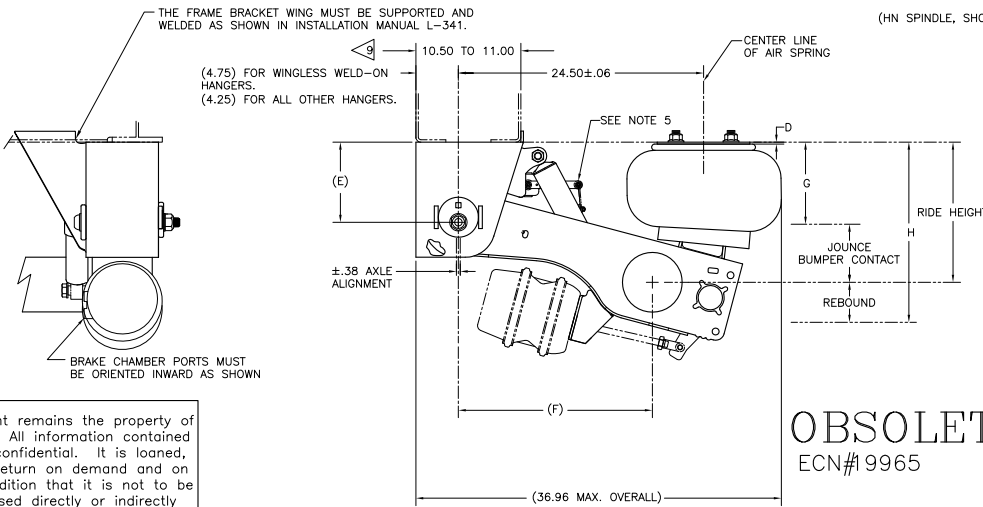
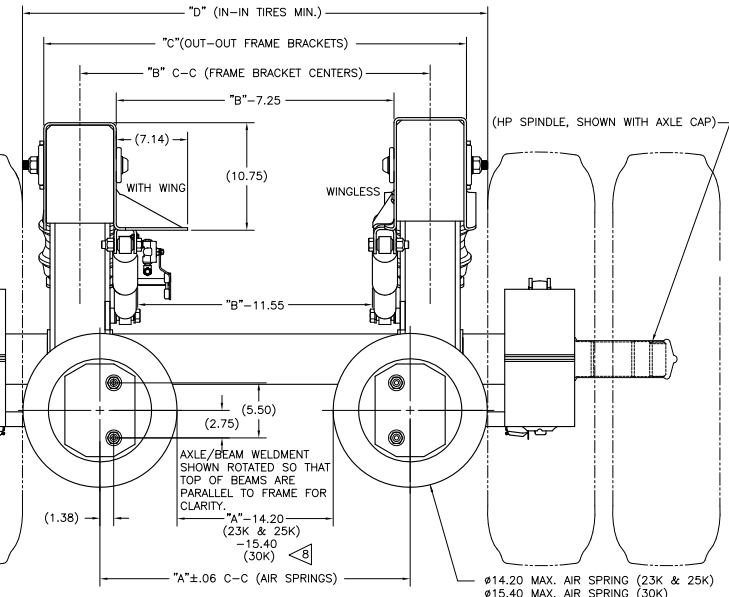
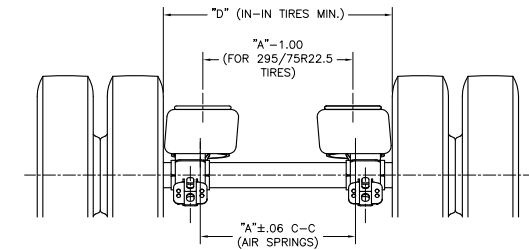
CLEARANCE SPECIFICATIONS:

- 1.0 INCH MINIMUM CLEARANCE REQUIRED BETWEEN TOP OF TIRE AND BOTTOM OF TRAILER STRUCTURE WHEN AXLE IS AT FULL JOUNCE.
- 2.0 INCHES MINIMUM CLEARANCE REQUIRED BETWEEN INSIDE OF TIRE AND TRAILER STRUCTURE FOR LATERAL MOVEMENT.
- .75 INCH MINIMUM CLEARANCE MUST BE MAINTAINED AROUND AIR SPRING WHEN IT IS AT MAXIMUM DIAMETER.

C-CHANNEL REQUIREMENT WHEN USING UNDER BEAM LIFT ASSEMBLY



OPTIONAL AIR SPRING SPACING WHEN USING 295/75R22.5 TIRES (30K)



OBSOLETE
ECN# 9965

SEE PAGE 2 FOR TABULATED DIMENSIONS SHOWN ABOVE

This Print remains the property of Hendrickson. All information contained thereon is confidential. It is loaned, subject to return on demand and on express condition that it is not to be copied or used directly or indirectly for any purpose other than the purpose for which it has been loaned to you.

<p>HENDRICKSON TRAILER SUSPENSION SYSTEMS 2015 WASHINGTON ROAD SE, GAITHERSBURG, MD 20878 USA</p>	<p>UNLESS OTHERWISE NOTED, DIMENSIONS ARE IN INCHES</p> <p>±.00 ±.01 ±.00 ±.01 ±.00 ±.01</p> <p>ANGULAR: ±.05° DIMENSIONS FOR 20 AND 24.50-29.00 (ECN NO.) BY DATE</p>	<p>REV 25 18796 CL4 4-27-10</p> <p>REV 24 17439 CLM 2/13/09</p> <p>REV 23 15084 ARS 8-8-07</p> <p>REV 22 14634 ARS 8-8-07</p>	<p>DESIGNED BY: K. GALIGHER DRAWN BY: G. SENEKLE DATE: 10-12-99</p>	<p>THIS DRAWING IS THE PROPERTY OF HENDRICKSON</p>	<p>INTRAAX® AAT INSTALLATION DRAWING</p>	<p>FIG. 1706-1.000</p>	<p>D</p>	<p>1 OF 5</p>
	<p>D-25302</p>			<p>D-25302</p>		<p>D-25302</p>		

5	5	BUMPER CONTACT	D	E	F	6	6	WELD-ON SUSP. WEIGHT (LB)	BOLT-ON SUSP. WEIGHT (LB)	
RIDE HEIGHT	JOUNCE	REBOUND				G	H			
AAT 23K DIMENSIONS										
STANDARD TRAVEL										
13.5	3.2	5.3	2.7	.19	8.0	19.5	10.3	18.8	273	301
14.0	3.7	4.8	3.2			19.4				
15.0	3.8	3.8	3.3	1.31		19.0	11.2	18.8	276	304
16.0	3.9	4.7	3.3	2.06	10.0	19.4	12.1	20.7	286	314
17.0	3.8	3.7	3.3	3.31	10.0	19.0	13.2	20.7	288	316
18.0	3.9	4.8	3.3	4.06	12.0	19.4	14.1	22.8	303	368
19.0	3.8	3.8	3.3	5.31	12.0	19.0	15.2	22.8	308	373
LIMITED REBOUND TRAVEL										
14.0	3.7	3.4	3.2	.19	8.0	19.4	10.3	17.4	272	300
16.0	3.9	3.3	3.3	2.06	10.0		12.1	19.3	285	313
18.0	3.9	3.3	3.3	4.06	12.0		14.1	21.3	303	367
HIGH CONTROL TRAVEL										
13.5	2.9	5.9	2.3	.19	10.0	20.0	10.6	19.4	281	323
14.0	3.4	5.4	2.8		10.0	19.9	10.6	19.4		
15.0	3.5	4.4	2.9	1.31	10.0	19.7	11.5	19.4	284	326
16.0	3.5	5.7	2.9	2.06	12.0	19.9	12.5	21.7	294	349
17.0	3.5	4.7	2.9	3.31	12.0	19.7	13.5	21.7	296	351

5	5	BUMPER CONTACT	D	E	F	6	6	WELD-ON SUSP. WEIGHT (LB)	BOLT-ON SUSP. WEIGHT (LB)	
RIDE HEIGHT	JOUNCE	REBOUND				G	H			
AAT 25K DIMENSIONS										
STANDARD TRAVEL										
13.5	2.9	5.3	2.3	.19	8.0	19.5	10.6	18.8	284	312
14.0	3.4	4.8	2.8			19.4				
15.0	3.5	3.8	2.9	1.31	10.0	19.0	11.5	20.7	287	315
16.0		4.7		2.06		19.4	12.5		297	325
17.0		3.7		3.31		19.0	13.5		299	327
18.0		4.8		4.06		19.4	14.5		314	378
19.0	3.8	5.31	12.0	19.0	15.5	22.8	319	384		
LIMITED REBOUND TRAVEL										
14.0	3.4	3.4	2.8	.19	8.0	19.4	10.6	17.4	283	311
16.0	3.5	3.2	2.9	2.06	10.0		12.5	19.2	296	324
18.0	3.5	3.3	2.9	4.06	12.0		14.5	21.3	313	378
HIGH CONTROL TRAVEL										
13.5	2.5	5.9	2.0	.19	10.0	20.0	11.0	19.4	292	334
14.0	3.0	5.4	2.5		10.0	19.9	11.0	19.4		
15.0	3.1	4.4	2.5	1.31	10.0	19.7	11.9	19.4	295	337
16.0	3.1	5.6	2.6	2.06	12.0	19.9	12.9	21.6	305	360
17.0	3.1	4.6	2.5	3.31	12.0	19.7	13.9	21.6	307	362

NOTES:

- SUSP. WEIGHT INCLUDES SUSPENSION COMPONENTS ONLY. WEIGHT REFLECTS STANDARD AIR SPRING, WINGED FRAME BRACKETS WITH STANDARD SHOCK.
- FOR AXLE WEIGHTS SEE "AXLE WEIGHT CHART" ON THIS DRAWING. AXLE WEIGHTS INCLUDE BRAKE COMPONENTS LESS BRAKE CHAMBERS AND SLACK ADJUSTERS.
- TOTAL WEIGHT = SUSP. WEIGHT + AXLE WEIGHT
- SEE L-341 FOR RIDE HEIGHT RANGE.
- JOUNCE AND REBOUND DIMENSIONS CHANGE AS THE RIDE HEIGHT CHANGES FROM THE NOMINAL POSITION.
- DIMENSIONS "G" & "H" WILL REMAIN CONSTANT REGARDLESS OF RIDE HEIGHT VARIATION FROM NOMINAL POSITION.
- RIDE HEIGHT - JOUNCE = " G " RIDE HEIGHT + REBOUND = " H "

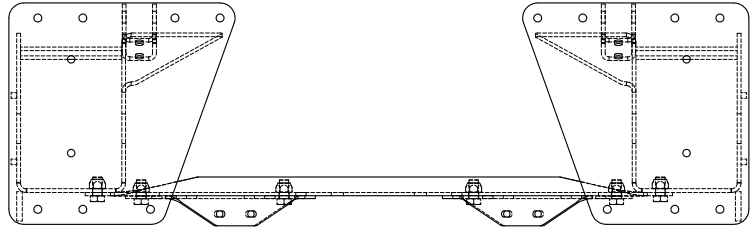
- ADD 1.29 LB (71.5" TRACK) OR 2.98 LB (77.5" TRACK) FOR OPTIONAL BOLT-ON C-CHANNEL, STRUTS, AND HARDWARE (BOLT-ON FRAME BRACKETS, 13.5", 14.0", 15.0", 16.0", 17.0" RIDE HEIGHTS, HIGH CONTROL TRAVEL -OR- 18.0", 19.0" RIDE HEIGHTS, STANDARD TRAVEL -OR- 18.0" RIDE HEIGHT, LIMITED REBOUND TRAVEL).
- ADD 15.29 LB (71.5" TRACK) OR 16.98 LB (77.5" TRACK) FOR OPTIONAL BOLT-ON C-CHANNEL, STRUTS, AND HARDWARE (BOLT-ON FRAME BRACKETS, 13.5", 14.0", 15.0", 16.0", 17.0" RIDE HEIGHTS, STANDARD TRAVEL -OR- 14.0", 16.0" RIDE HEIGHTS, LIMITED REBOUND TRAVEL).

This Print remains the property of Hendrickson. All information contained thereon is confidential. It is loaned, subject to return on demand and on express condition that it is not to be copied or used directly or indirectly for any purpose other than the purpose for which it has been loaned to you.

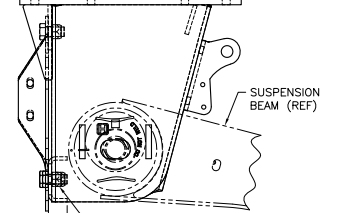
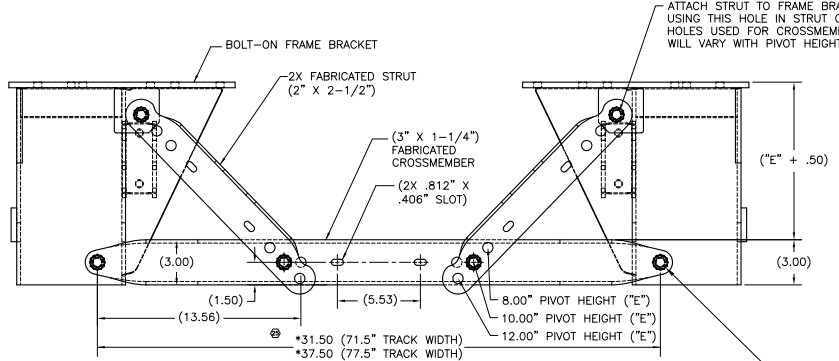
OBSOLETE
ECN#19965

		AXLE WEIGHT CHART																	
		(AXLE ATTACHMENT WRAP INCLUDED IN SUSP. WEIGHT)																	
		HN AXLE - ASSEMBLY						HP AXLE - ASSEMBLY						HUS AXLE - ASSEMBLY					
AXLE TRACK		71.5		77.5		73.0		71.5		77.5		73.0		71.5		77.5		73.0	
SUSPENSION CAPACITY		23K	25K	23K	25K	23K	25K	23K	25K	23K	25K	23K	25K	23K	25K	23K	25K	23K	25K
AXLE WEIGHT (LB)		268	291	280	305	271	294	271	293	282	306	274	296	271	294	282	308	274	297

HENDRICKSON TRAILER SUSPENSION SYSTEMS <small>2015 HENDRICKSON PLACE ST. CLEVELAND, OH 44115-1000 USA</small>	<small>UNLESS OTHERWISE NOTED, DIMENSIONS ARE IN INCHES</small> TOLERANCES ARE: SIZE ± .005 HOLE ± .010 ANGULAR ± .010 DIMENSIONS FOR TO JMS 17434-17435 (REV. 05/07) BY DATE:	<small>DESIGNED BY</small> K. GALIGHER <small>CHECKED BY</small> G. SHENKLE <small>DATE</small> 8-2-07 <small>APP'D BY</small> P. McCLELLAND	<small>DATE</small> 10-12-99 <small>REV</small> D <small>PAGE</small> 2 OF 5
	INTRAAX® AAT INSTALLATION DRAWING		D-25302



- INSTALLATION SEQUENCE:**
1. LOCATE FRAME BRACKETS ONTO TRAILER FRAME, AND LOOSELY INSTALL MOUNTING BOLTS.
 2. INSTALL CROSSMEMBER, USING 5/8" MOUNTING HOLES ON FRONT OF FRAME BRACKETS.
 3. INSTALL STRUTS, USING 5/8" MOUNTING HOLES IN FRAME BRACKET GUSSET AND CROSSMEMBER.
 4. TIGHTEN CROSSMEMBER MOUNTING BOLTS AND STRUT MOUNTING BOLTS, IF PRESENT.
 5. TIGHTEN FRAME BRACKET MOUNTING BOLTS.

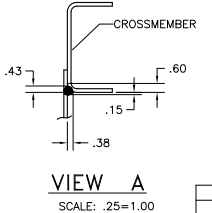
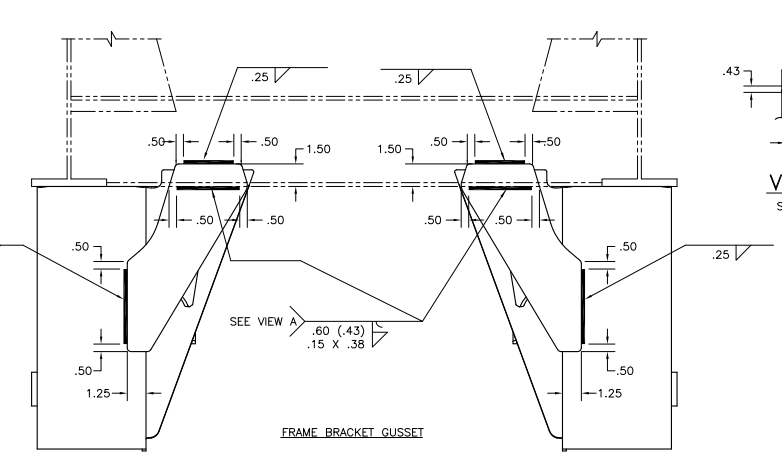
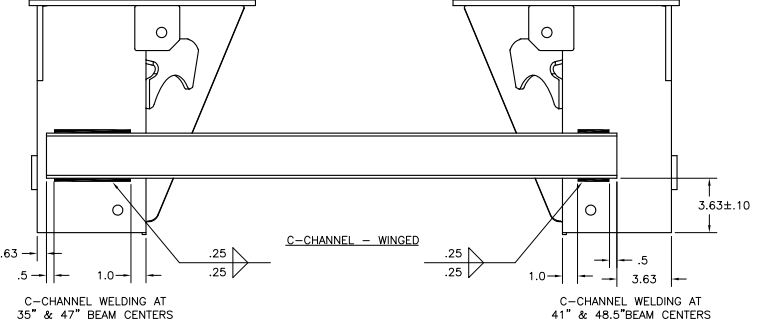
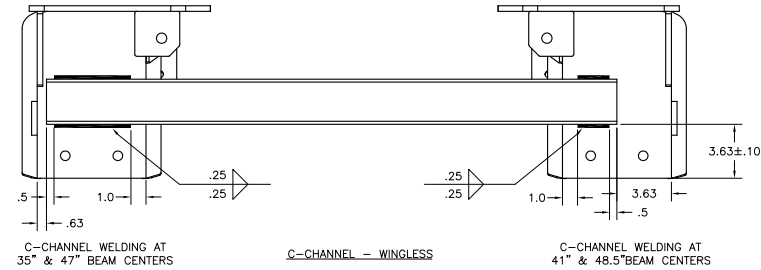


ATTACH STRUT TO FRAME BRACKET GUSSET USING THIS HOLE IN STRUT ONLY. HOLES USED FOR CROSSMEMBER WILL VARY WITH PIVOT HEIGHT.

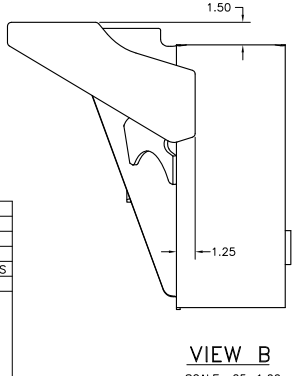
USE 5/8" HEX HEAD CAP SCREW WITH PREVAILING TORQUE NUT. SEE KIT A-30720. TORQUE TO 190±20 FT-LB.

BOLT-ON C-CHANNEL WITH STRUTS
BOLT-ON FRAME BRACKET

IF SUSPENSION IS PRE-INSTALLED IN FRAME BRACKETS, INSTALLATION OF CROSSMEMBER WILL REQUIRE HOLDING THIS NUT WITH AN OPEN-END WRENCH, WHILE TURNING THE BOLT HEAD TO TIGHTEN. (THERE IS NOT ENOUGH ROOM AHEAD OF THE BUSHING TUBE TO USE A BOX-END OR SOCKET WRENCH, NOR TO INSERT THE BOLT FROM INSIDE THE FRAME BRACKET).



This Print remains the property of Hendrickson. All information contained thereon is confidential. It is loaned, subject to return on demand and on express condition that it is not to be copied or used directly or indirectly for any purpose other than the purpose for which it has been loaned to you.



FRAME BRACKET BRACING				
FRAME ATTACHMENT--	WELD-ON		BOLT-ON	
SUSPENSION CAPACITY--	AAT 23K, 25K, AND 30K			
HIGH CONTROL--	YES -OR- NO		NO	
FRAME BRACKET STYLE--	WINGED	WINGLESS	WINGED	WINGLESS
RIDE HEIGHT	WINGED -OR- WINGLESS	WINGED	WINGLESS	WINGED -OR- WINGLESS
13.5	FRAME BRACKET GUSSET REQUIRED	C-CHANNEL REQUIRED	NONE	C-CHANNEL REQUIRED
14.0				
15.0				
16.0				
17.0				
18.0				
19.0	C-CHANNEL REQUIRED	C-CHANNEL REQUIRED	C-CHANNEL REQUIRED	

IT IS THE RESPONSIBILITY OF THE SUSPENSION INSTALLER TO PROVIDE AN EQUIVALENT FRAME BRACKET SUPPORT IF THE FRAME BRACKET BRACING IS NOT PURCHASED FROM HENDRICKSON.

OBSOLETE
ECN#19965

RISE HEIGHT	5 JOUNCE	5 REBOUND	BUMPER CONTACT	D	E	F	6 G	6 H	WELD-ON SUSP. WEIGHT (LB)	BOLT-ON SUSP. WEIGHT (LB)
AAT 30K DIMENSIONS										
STANDARD TRAVEL										
13.5	2.9	5.2	2.3	.19	8.0	19.5	10.6	18.7	293	322
14.0	3.4	4.7	2.8			19.4				
15.0	3.3	3.7	2.7	1.50	10.0	19.0	11.7	20.6	302	330
16.0		4.6	2.8	2.25		19.4	12.7		312	340
17.0	3.5	3.6	2.7	3.50	12.0	19.0	13.7	22.7	314	342
18.0		4.7	2.9	4.06		19.4	14.5		324	382
19.0	3.7		5.31			19.0	15.5		329	387
HIGH CONTROL TRAVEL										
13.5	2.5	5.9	2.0	.19	10.0	20.0	11.0	19.4	301	344
14.0	3.0	5.4	2.5			19.9				
15.0	2.9	4.4	2.4	1.50	12.0	19.7	12.1	21.6	310	352
16.0	3.0	5.6		2.25		19.9	13.0		319	374
17.0	2.9	4.6	3.50			19.7	14.1	21.6	322	377

NOTES:

- SUSP. WEIGHT INCLUDES SUSPENSION COMPONENTS ONLY. WEIGHT REFLECTS STANDARD AIR SPRING, WINGED FRAME BRACKETS WITH STANDARD SHOCK.
- FOR AXLE WEIGHTS SEE "AXLE WEIGHT CHART" ON THIS DRAWING. AXLE WEIGHTS INCLUDE BRAKE COMPONENTS LESS BRAKE CHAMBERS AND SLACK ADJUSTERS.
- TOTAL WEIGHT = SUSP. WEIGHT + AXLE WEIGHT
- SEE L-341 FOR RIDE HEIGHT RANGE.

- 5 JOUNCE AND REBOUND DIMENSIONS CHANGE AS THE RIDE HEIGHT CHANGES FROM THE NOMINAL POSITION.
- 6 DIMENSIONS "G" & "H" WILL REMAIN CONSTANT REGARDLESS OF RIDE HEIGHT VARIATION FROM NOMINAL POSITION.

7. RIDE HEIGHT - JOUNCE = " G "
- RIDE HEIGHT + REBOUND = " H "

8. ADD 1.29 LB (71.5" TRACK) OR 2.98 LB (77.5" TRACK) FOR OPTIONAL BOLT-ON C-CHANNEL, STRUTS, AND HARDWARE (BOLT-ON FRAME BRACKETS, 13.5", 14.0", 15.0", 16.0", 17.0" RIDE HEIGHTS, HIGH CONTROL TRAVEL -OR- 18.0", 19.0" RIDE HEIGHTS, STANDARD TRAVEL).
- ADD 15.29 LB (71.5" TRACK) OR 16.98 LB (77.5" TRACK) FOR OPTIONAL BOLT-ON C-CHANNEL, STRUTS, AND HARDWARE (BOLT-ON FRAME BRACKETS, 13.5", 14.0", 15.0", 16.0", 17.0" RIDE HEIGHTS, STANDARD TRAVEL).

This Print remains the property of Hendrickson. All information contained thereon is confidential. It is loaned, subject to return on demand and on express condition that it is not to be copied or used directly or indirectly for any purpose other than the purpose for which it has been loaned to you.

OBSOLETE
ECN# 9965

AXLE WEIGHT CHART (AXLE ATTACHMENT WRAP INCLUDED IN SUSP. WEIGHT)						
	HN AXLE - ASSEMBLY			HP AXLE - ASSEMBLY		
AXLE TRACK	71.5	77.5	73.0	71.5	77.5	73.0
SUSPENSION CAPACITY	30K	30K	30K	30K	30K	30K
AXLE WEIGHT (LB)	291	305	294	293	306	296



UNLESS OTHERWISE NOTED, TOLERANCES ARE:		2E	1/32"	CON	2/16"	DATE BY	7-17-02
±	±	2S	1/16"	CL	4-22-10	C. ANDERSON	
±	±	2K	1/32"	CON	2/13/02	DATE BY	3-26-02 P. BILLMAN
±	±	2J	1/64"	LAN	8-2-07	DATE BY	W. SCHNEIDER

INTRAAX® AAT INSTALLATION DRAWING			SCALE 1/25=1.00	SHEET NO. D	TOTAL SHEETS 4 OF 5
D-25302					

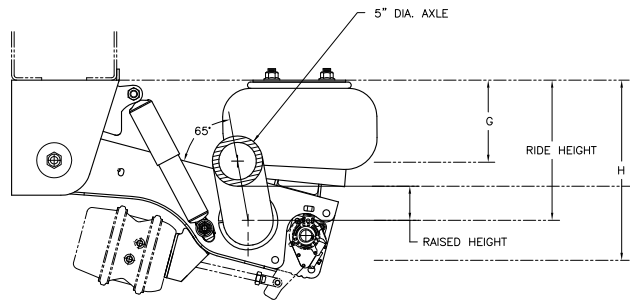
NOTES:

1. THIS PAGE IS FOR AAT 23K AND 25K SUSPENSIONS WITH RAISED CENTER AXLE OPTION.
2. SUSPENSION WEIGHT, DIMENSIONS, AND TRAVEL: SEE PAGE 2.
3. FOR AXLE WEIGHTS, SEE "AXLE WEIGHT CHART" ON THIS PAGE.
AXLE WEIGHTS INCLUDE BRAKE COMPONENTS LESS BRAKE CHAMBERS AND SLACK ADJUSTERS.
4. TOTAL WEIGHT = SUSP. WEIGHT + AXLE WEIGHT.

RAISED HEIGHT			
RISE HEIGHT	AT RISE HEIGHT	AT FULL JOUNCE (G)	AT FULL REBOUND (H)
AAT 23K AND 25K RAISED CENTER AXLE DIMENSIONS			
STANDARD TRAVEL			
13.5	3.3	3.1	3.4
14.0	3.4	3.1	3.4
15.0	3.4	3.2	3.4
16.0	3.4	3.1	3.4
17.0	3.4	3.2	3.4
18.0	3.4	3.1	3.4
19.0	3.4	3.2	3.4
LIMITED REBOUND TRAVEL			
14.0	3.4	3.1	3.4
16.0	3.4	3.1	3.4
18.0	3.4	3.1	3.4
HIGH CONTROL TRAVEL			
13.5	3.2	2.9	3.4
14.0	3.2	2.9	3.4
15.0	3.3	3.0	3.4
16.0	3.2	2.9	3.4
17.0	3.3	3.0	3.4

This Print remains the property of Hendrickson. All information contained thereon is confidential. It is loaned, subject to return on demand and on express condition that it is not to be copied or used directly or indirectly for any purpose other than the purpose for which it has been loaned to you.

AXLE WEIGHT CHART - RAISED CENTER AXLE (AXLE ATTACHMENT WRAP INCLUDED IN SUSP. WEIGHT)			
	HN AXLE - ASSEMBLY	HP AXLE - ASSEMBLY	
AXLE TRACK	71.5	77.5	
AXLE WEIGHT (LB)	309	324	
		310	325



VIEW AA
SCALE: .166=1.000

