

H PARTS LIST

SOFTEK® NXT Front Steer Axle and Suspension System for Peterbilt Vehicles

LIT NO.: SP-289

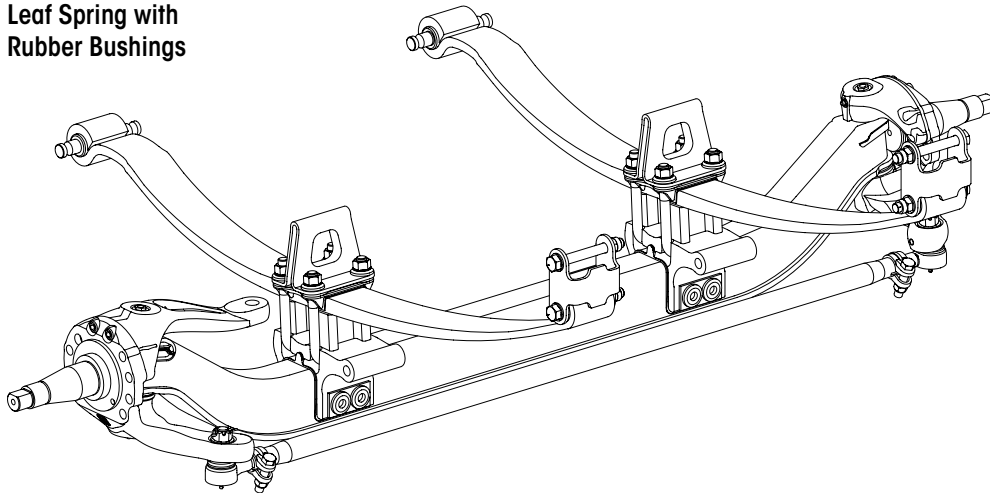
DATE: March 2018

REVISION: E

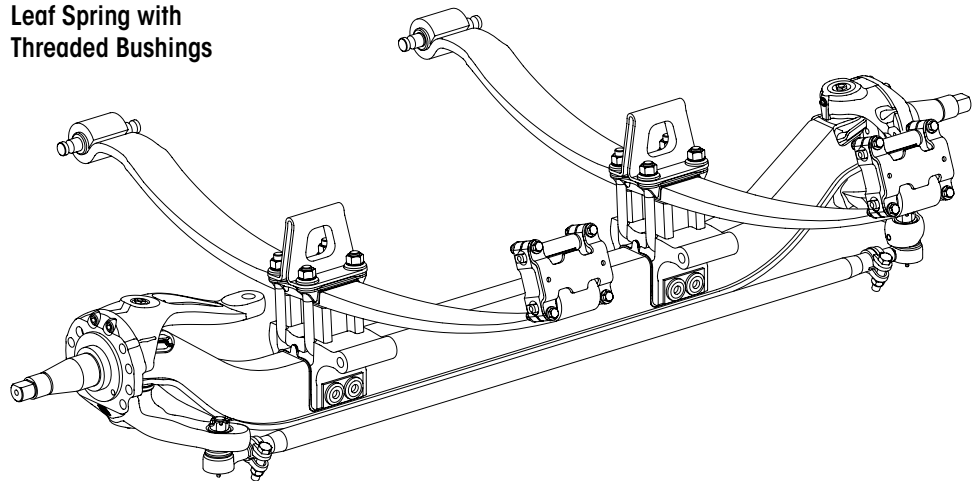
CONTENTS

DESCRIPTION	PAGE
Parts List	
■ Leaf Spring Assembly with Rubber Bushings	2
■ Leaf Spring Assembly with Threaded Bushings	4
Special Tools	6

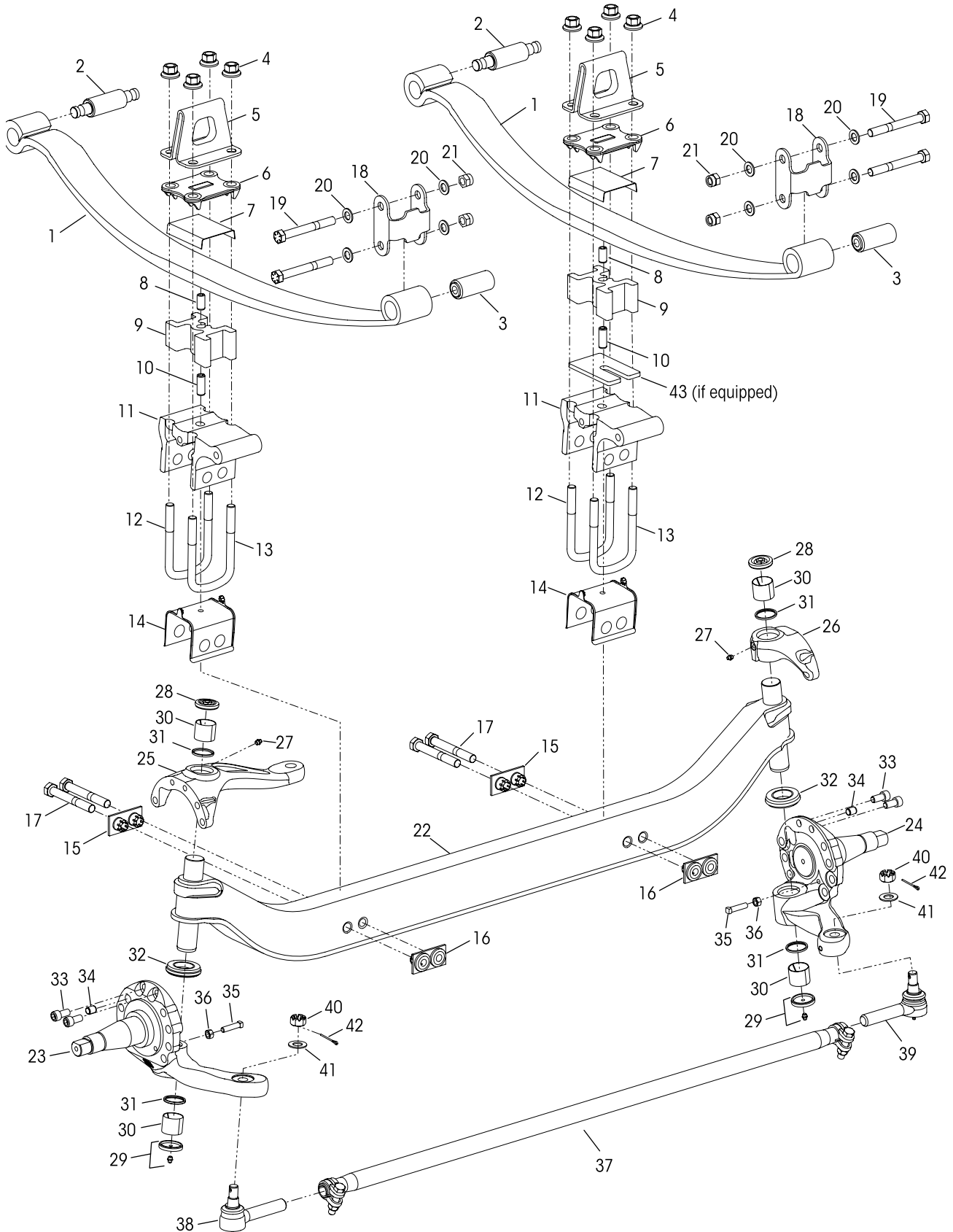
Leaf Spring with Rubber Bushings



Leaf Spring with Threaded Bushings



12.5K / 13.2K Capacity Leaf Spring Assembly with Rubber Bushings





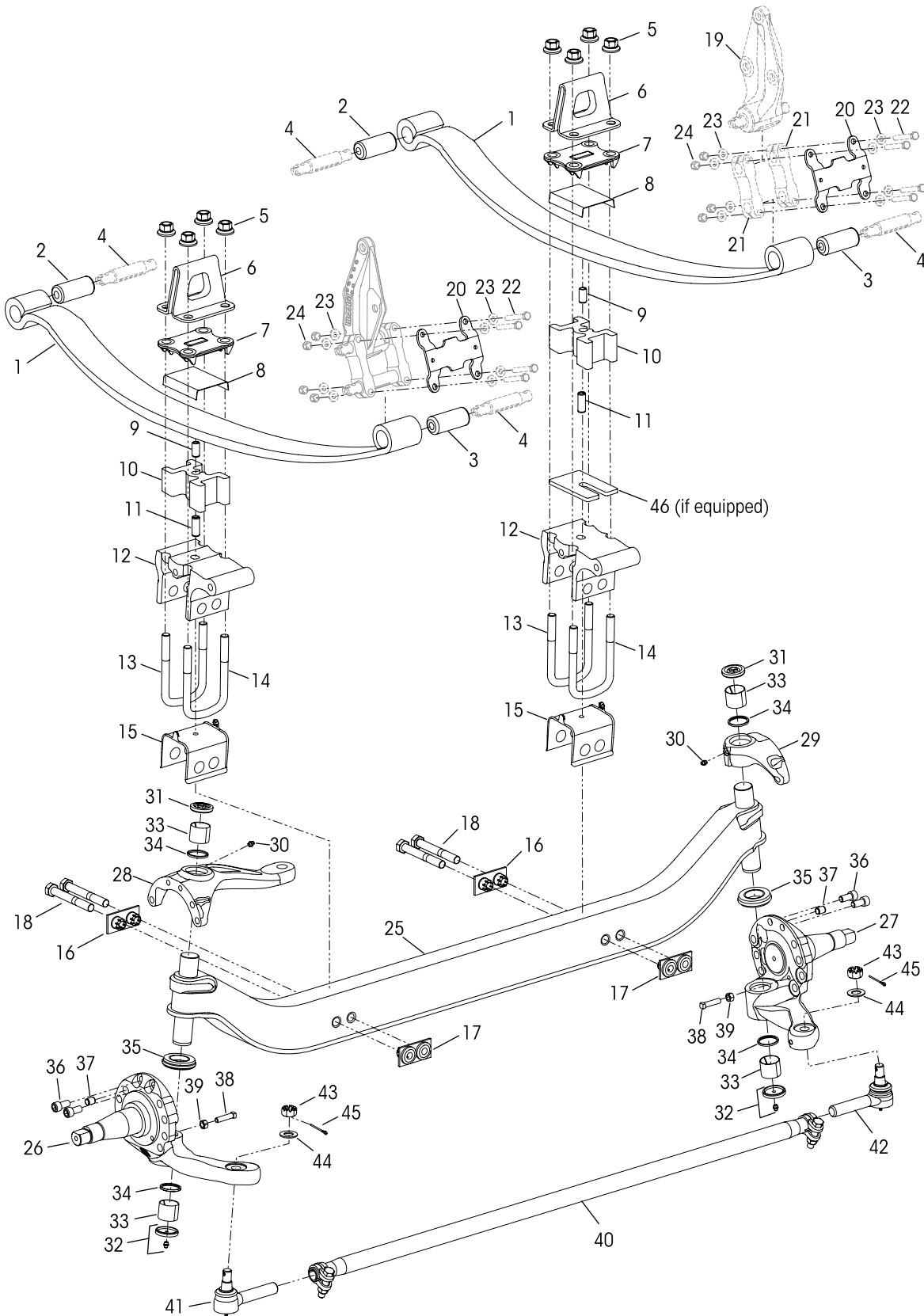
			VEHICLE				VEHICLE
KEY NO.	PART NO.	DESCRIPTION	QTY.	KEY NO.	PART NO.	DESCRIPTION	QTY.
Leaf Spring and Clamp Group Assembly				*Axle Clamp			
		Service Kit, One Side, Includes Key Nos. 1-17		15		Front - Unthreaded	2
	60961-813	10" Ride Height, 12.5K		16		Rear - Threaded	2
	60961-854	10" Ride Height, 13.2K		17		*M20 X 2.5-6G x 160 mm Hex Cap Screw	4
	60961-814	8½" Ride Height, 12.5K			60961-803	Rear Shackle Service Kit, One Side,	
	60961-855	8½" Ride Height, 13.2K				Includes Key Nos. 18-21	
	60961-815	6½" Ride Height, 12.5K		18	70795-001	Shackle	2
	60961-856	6½" Ride Height, 13.2K		19	21867-023	¾"-16 UNF x 6½" Hex Bolt	4
1		Leaf Spring Assembly, Includes Key Nos. 2-3	2	20	22962-001	¾" Washer	8
	53765-000	12.5K Capacity		21	17700-035	¾"-16 UNF-2B Nylocknut	4
	53984-000	13.2K Capacity		22		Axle and Kingpin Assembly	1
	60961-820	Front Spring Eye Bushing Service Kit, One Side,			70685-001	12.5K	
		Includes Key Nos. 2, 44			70685-101	12.5K, 6½" Ride Height Only	
2		*Front Bar Pin Spring Eye Bushing	2		78685-001	13.2K	
	60961-821	Rear Spring Eye Bushing Service Kit, One Side,			78685-101	13.2K, 6½" Ride Height Only	
		Includes Key Nos. 3, 44		23		LH Lower Steering Knuckle Assembly, Includes	1
3		*Rear Thru-bolt Spring Eye Bushing	2			Key Nos. 29, 31, 34-36 and Kingpin Bushings	
	60961-804	Clamp Group Service Kit, One Side,			58900-499	241"-290" Wheelbase	
		Includes Key Nos. 4, 7, 14-17			58900-497	191"-240" Wheelbase	
		• Key No. 12-13 U-bolts to be purchased separately			58900-495	140"-190" Wheelbase	
4	75989-000	M20 x 1.5-6H Two-piece Nut	8	24		RH Lower Steering Knuckle Assembly, Includes	1
5	70690-001	Jounce Stop	2			Key Nos. 29, 31, 34-36 and Kingpin Bushings	
6	70688-001	Top Pad	2		58900-500	241"-290" Wheelbase	
7	75990-000	Leaf Spring Liner	2		58900-498	191"-240" Wheelbase	
8		Upper Slotted Spring Pin	2		58900-496	140"-190" Wheelbase	
	76897-013	10" Ride Height, 12.5K / 13.2K		25	60903-472	LH Upper Steering Knuckle Assembly, Includes	1
	76897-015	8½" Ride Height, 12.5K				Key Nos. 27-28, 31 and Kingpin Bushings	
	76897-005	8½" Ride Height, 13.2K		26	60904-402	RH Upper Steering Knuckle Assembly, Includes	1
	76897-016	6½" Ride Height, 12.5K				Key Nos. 27-28, 31 and Kingpin Bushings	
	76897-012	6½" Ride Height, 13.2K			60961-630	Kingpin Bushing and Roller Thrust Bearing	
9		Leaf Spring Spacer	2			Service Kit, One Side,	
	70694-001	10" Ride Height, 12.5K				Includes Key Nos. 27-33, Loctite	
	70694-003	10" Ride Height, 13.2K		27	33117-000	Grease Zerk	2
	70694-002	8½" Ride Height, 12.5K		28	68687-003	Grease Cap Assembly, Upper	2
	70694-004	8½" Ride Height, 13.2K		29	68687-002	Grease Cap Assembly, Lower	2
	77808-001	6½" Ride Height, 12.5K		30	78320-001	Kingpin Bushing	4
	70694-005	6½" Ride Height, 13.2K		31	68731-000	Kingpin Seal	4
10	76897-001	Lower Slotted Spacer Pin (10" Ride Height Only)	2	32	64256-000	Roller Thrust Bearing	2
11	75986-001	Axle Wrap / Shock Bracket	2	33	60236-001	⅝"-11 UNC Socket Head Cap Screw	4
12		U-bolt - Front	2		60937-000	Loctite® (Red) Compound Tube (Not Shown)	1
	77132-180	10" Ride Height, 12.5K, <i>Replaces 77132-190</i>		34	64246-000	ABS Sensor Sleeve	2
	77132-190	10" Ride Height, 13.2K			60961-069	Stop Bolt Service Kit, One End,	
	77132-140	8½" Ride Height, 12.5K, <i>Replaces 77132-150</i>				Includes Key Nos. 35-36	
	77132-150	8½" Ride Height, 13.2K		35	60238-001	½"-13 UNC x 2" Square Head Bolt	2
	77132-120	6½" Ride Height, 12.5K, <i>Replaces 77132-130</i>		36	60240-000	½"-13 UNC Hex Jam Nut	2
	77132-130	6½" Ride Height, 13.2K		37		Tie Rod Assembly, Includes Key Nos. 38-40	1
13		U-bolt - Rear	2			<i>See Table Below</i>	
	77132-190	10" Ride Height, 12.5K				Tie Rod End Service Kits, See Table Below	
	77132-200	10" Ride Height, 13.2K				Axle Set, Includes LH and RH Kits	
	77132-150	8½" Ride Height, 12.5K				LH, Includes Key Nos. 38, 40-42	
	77132-160	8½" Ride Height, 13.2K				RH, Includes Key Nos. 39-42	
	77132-130	6½" Ride Height, 12.5K		38		LH Tie Rod End, <i>See Table Below</i>	1
	77132-140	6½" Ride Height, 13.2K		39		RH Tie Rod End, <i>See Table Below</i>	1
	60961-802	Axle Clamp Service Kit, One Side,		40		*⅞" Castle Nut	2
		Includes Key Nos. 14-17		41	22962-007	⅞" Flat Washer	2
14		*Axle Wrap Liner	2	42	17800-004	Tie Rod Nut Cotter Pin	2
				43	78578-001	**Chassis Spacer (if equipped)	1
				44	69125-001	Loctite® 680 (Green) Compound Tube (Not Shown)	1

Wheelbase	Tie Rod Assembly		Tie Rod End		Tie Rod End Service Kits	
	12.5K	13.2K	12.5K	13.2K	12.5K	13.2K
241"-290"	76877-003	76879-003	70995-001 (LH) 70995-002 (RH)	76876-001 (LH) 76876-002 (RH)	60961-734 (Axle Set) 60961-736 (LH) 60961-741 (RH)	60961-735 (Axle Set) 60961-742 (LH) 60961-743 (RH)
191"-240"	76877-002	76879-002				
140"-190"	76877-005	76879-001				



12.5K / 13.2K Capacity

Leaf Spring Assembly with Threaded Bushings





			VEHICLE				VEHICLE
KEY NO.	PART NO.	DESCRIPTION	QTY.	KEY NO.	PART NO.	DESCRIPTION	QTY.
		Leaf Spring and Clamp Group Assembly Service Kit, One Side,					
		Includes Key Nos. 1-3, 5-18					
	60961-848	10" Ride Height, 12.5K		18		*M20 X 2.5-6G x 160 mm Hex Cap Screw	4
	60961-849	10" Ride Height, 13.2K		19		***Rear Hanger	2
	60961-850	8½" Ride Height, 12.5K		20	79381-001	Shackle Plate	2
	60961-851	8½" Ride Height, 13.2K		21		***Shackle	4
	60961-852	6½" Ride Height, 12.5K		22		***M12 Hex Bolt	8
	60961-853	6½" Ride Height, 13.2K		23		***M12 Washer	16
				24		***M12 Nylocknut	8
1		Leaf Spring Assembly, Includes Key Nos. 2-3	2	25		Axle and Kingpin Assembly	1
	53963-000	12.5K Capacity			70685-001	12.5K	
	53964-000	13.2K Capacity			70685-101	12.5K, 6½" Ride Height Only	
2	52700-000	Front Spring Pin Bushing	2		78685-001	13.2K	
3	53980-000	Rear Threaded Bushing	2		78685-101	13.2K, 6½" Ride Height Only	
4		***Threaded Bar Pin	2	26		LH Lower Steering Knuckle Assembly, Includes Key Nos. 32,34, 37-39 and Kingpin Bushings	1
	60961-804	Clamp Group Service Kit, One Side,			58900-499	241"-290" Wheelbase	
		Includes Key Nos. 5, 8, 15-18			58900-497	191"-240" Wheelbase	
		• Key No. 13-14 U-bolts to be purchased separately			58900-495	140"-190" Wheelbase	
5	75989-000	M20 x 1.5-6H Two-piece Nut	8	27		RH Lower Steering Knuckle Assembly, Includes Key Nos. 32,34, 37-39 and Kingpin Bushings	1
6	70690-001	Jounce Stop	2		58900-500	241"-290" Wheelbase	
7	70688-001	Top Pad	2		58900-498	191"-240" Wheelbase	
8	75990-000	Leaf Spring Liner	2		58900-496	140"-190" Wheelbase	
9		Upper Slotted Spring Pin	2	28	60903-472	LH Upper Steering Knuckle Assembly, Includes Key Nos. 30-31, 34 and Kingpin Bushing	1
	76897-013	10" Ride Height, 12.5K / 13.2K			60904-402	RH Upper Steering Knuckle Assembly, Includes Key Nos. 30-31, 34 and Kingpin Bushing	1
	76897-015	8½" Ride Height, 12.5K			60961-630	Kingpin Bushing and Roller Thrust Bearing Service Kit, One Side,	
	76897-005	8½" Ride Height, 13.2K				Includes Key Nos. 30-36, Loctite	
	76897-016	6½" Ride Height, 12.5K		30	33117-000	Grease Zerk	2
	76897-012	6½" Ride Height, 13.2K		31	68687-003	Grease Cap Assembly, Upper	2
10		Leaf Spring Spacer	2	32	68687-002	Grease Cap Assembly, Lower	2
	70694-001	10" Ride Height, 12.5K		33	78320-001	Kingpin Bushing	4
	70694-003	10" Ride Height, 13.2K		34	68731-000	Kingpin Seal	4
	70694-002	8½" Ride Height, 12.5K		35	64256-000	Roller Thrust Bearing	2
	70694-004	8½" Ride Height, 13.2K		36	60236-001	5/8"-11 UNC Socket Head Cap Screw	4
	77808-001	6½" Ride Height, 12.5K			60937-000	Loctite® (Red) Compound Tube (Not Shown)	1
	70694-005	6½" Ride Height, 13.2K		37	64246-000	ABS Sensor Sleeve	2
11	76897-001	Lower Slotted Spacer Pin (10" Ride Height Only)	2		60961-069	Stop Bolt Service Kit, One End,	
12	75986-001	Axle Wrap / Shock Bracket	2			Includes Key Nos. 38-39	
13		U-bolt - Front	2	38	60238-001	½"-13 UNC x 2" Square Head Bolt	2
	77132-180	10" Ride Height, 12.5K		39	60240-000	½"-13 UNC Hex Jam Nut	2
	77132-190	10" Ride Height, 13.2K		40		Tie Rod Assembly, Includes Key Nos. 41-43	1
	77132-140	8½" Ride Height, 12.5K				<i>See Table on Page 3</i>	
	77132-150	8½" Ride Height, 13.2K				Tie Rod End Service Kits, See Table on Page 3	
	77132-120	6½" Ride Height, 12.5K				Axle Set, Includes LH and RH Kits	
	77132-130	6½" Ride Height, 13.2K				LH, Includes Key Nos. 41, 43-45	
						RH, Includes Key Nos. 42-45	
14		U-bolt - Rear	2	41		LH Tie Rod End, <i>See Table on Page 3</i>	1
	77132-190	10" Ride Height, 12.5K		42		RH Tie Rod End, <i>See Table on Page 3</i>	1
	77132-200	10" Ride Height, 13.2K		43		*7/8" Castile Nut	2
	77132-150	8½" Ride Height, 12.5K		44	22962-007	7/8" Flat Washer	2
	77132-160	8½" Ride Height, 13.2K		45	17800-004	Tie Rod Nut Cotter Pin	2
	77132-130	6½" Ride Height, 12.5K		46	78578-001	**Chassis Spacer (if equipped)	1
	77132-140	6½" Ride Height, 13.2K		47	69125-001	Loctite 680 (Green) Compound Tube (Not Shown)	1
	60961-802	Axle Clamp Service Kit, One Side,					
		Includes Key Nos. 15-18					
15		*Axle Wrap Liner	2				
		*Axle Clamp					
16		Front - Unthreaded	2				
17		Rear - Threaded	2				

NOTE: * Item included in kit/assembly only, part not sold separately.

** Chassis spacer (if equipped) can be located on either left or right side of suspension.

*** Not supplied by Hendrickson, used for reference only. Hendrickson is not responsible for components supplied by vehicle manufacturer. For more information and assistance with maintenance and rebuild instructions on these components see vehicle manufacturer.

■ Special Tools

LEAF SPRING BUSHING INSTALLATION AND REMOVAL TOOLS

Hendrickson Part No. 66086-300

OTC Part No. 4274 Visit otctools.com



Hendrickson Part No. 66086-301

OTC Part No. 4275 Visit otctools.com



Hendrickson Part No. 66086-302

OTC Part No. 4250 Visit otctools.com

NOTE: In conjunction with Hendrickson Part No. 66086-301 (OTC 4275) this additional adapter tool kit is available to purchase to be used on Hendrickson PRIMAXX EX • COMFORT AIR • V-Ride rear air suspensions (not needed for this front suspension).



ADJUSTABLE STRAIGHT FLUTE REAMER

The dimension of cutting diameter must facilitate a range of 1.802" – 1.812"



This is a general parts list to provide directional information. Components may vary by model. Questions in regards to parts, contact Hendrickson Truck Parts at 1.866.755.5968 (Toll-free U.S. and Canada), 630.910.2800 (Outside U.S. and Canada) or e-mail: truckparts@hendrickson-intl.com.

www.hendrickson-intl.com



Truck Commercial Vehicle Systems
800 South Frontage Road
Woodridge, IL 60517-4904 USA

1.866.755.5968 (Toll-free U.S. and Canada)
630.910.2800 (Outside U.S. and Canada)
Fax 630.910.2899