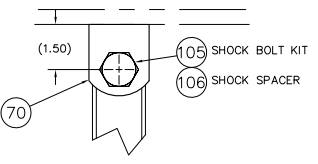
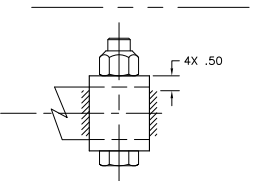
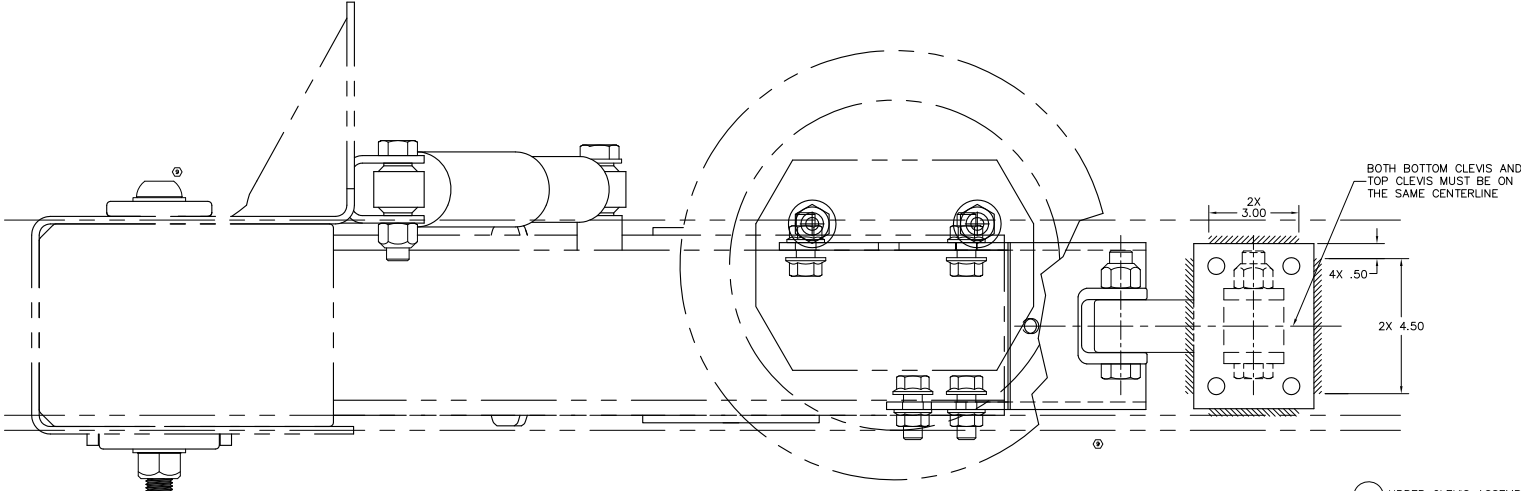
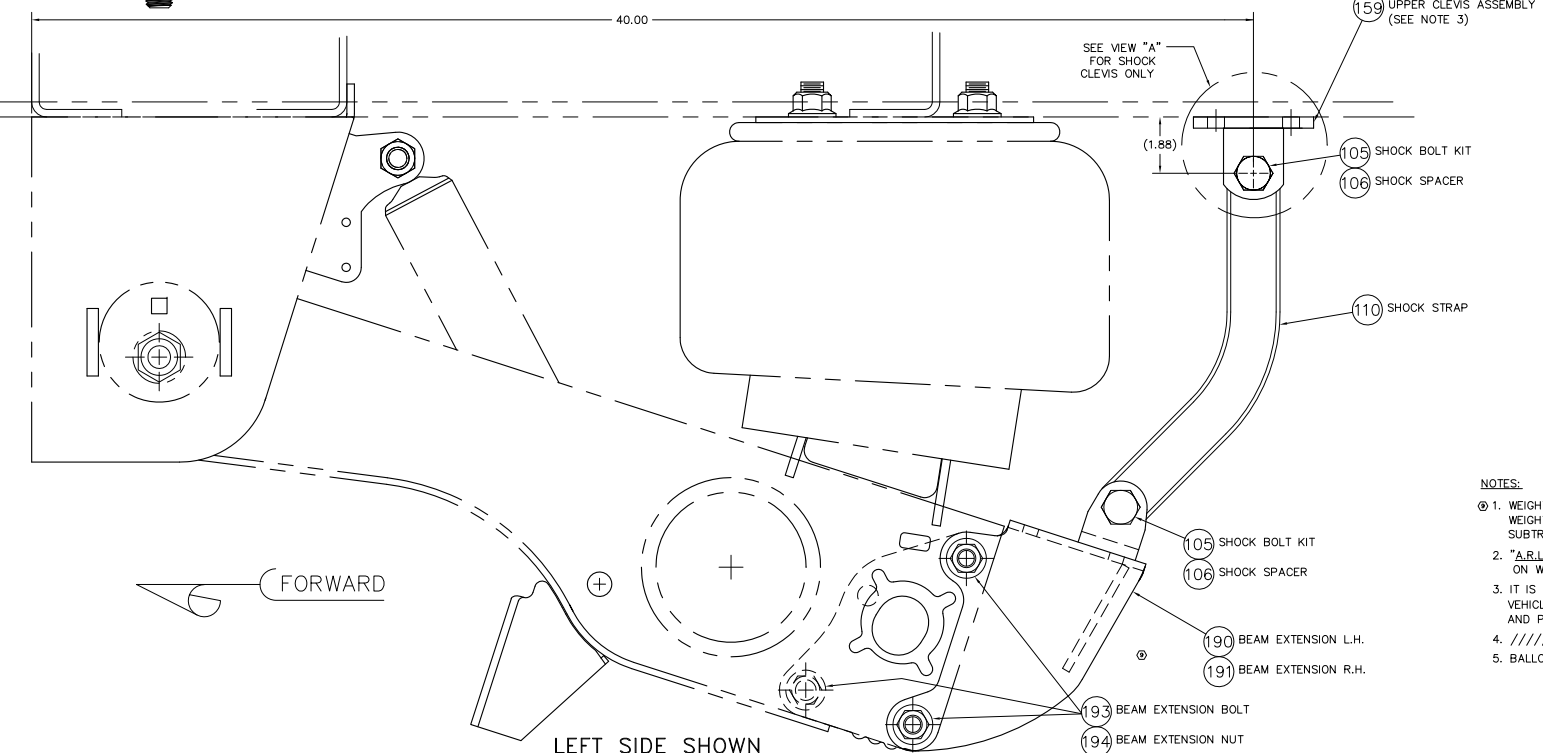


ITEM	DESCRIPTION	ARL
1-199	ARL KIT COMPONENTS	B-26594

BOLT TORQUE VALUES			
ITEM	DESCRIPTION	SIZE	TORQUE
105	SHOCK BOLT KIT	3/4-10	150 FT LB
193	BEAM EXTENSION BOLT	5/8-11	200-220 FT LB
194	BEAM EXTENSION NUT	5/8-11	200-220 FT LB



VIEW "A"
SCALE: .50=1.00



This Print remains the property of Hendrickson. All information contained thereon is confidential. It is loaned, subject to return on demand and on express condition that it is not to be copied or used directly or indirectly for any purpose other than the purpose for which it has been loaned to you.

- NOTES:**
- WEIGHT (TOTAL KIT): 36.32 LB. WEIGHT DOES NOT INCLUDE MOUNTING METHOD OF TOP CLEVIS. SUBTRACT 4.50 LB FOR A.R.L. KIT WITH SHOCK CLEVIS ONLY.
 - "A.R.L." (AUXILIARY REBOUND LIMITER) KIT WILL WORK ON WELD-ON, BOLT-ON, WING OR WINGLESS HANGER APPLICATIONS.
 - IT IS THE RESPONSIBILITY OF THE SUSPENSION INSTALLER AND THE VEHICLE DESIGNER TO PROVIDE BOTH ADEQUATE VEHICLE FRAME DESIGN AND PROPER SECUREMENT METHOD FOR THE A.R.L. UPPER SHOCK CLEVIS (ITEM 159).
 - ////////// PATTERN DENOTES WELD PLACEMENT
 - BALLOONED NUMBERS FOR HENDRICKSON INTERNAL USE ONLY.

HENDRICKSON TRAILER SUSPENSION SYSTEMS <small>3715 MADISON PLACE SE, GAITHERSBURG, MD 20878-1001, U.S.A.</small>	<small>UNLESS OTHERWISE NOTED:</small> DIMENSIONS ARE IN INCHES ANGULAR: ± 0.5° DIMENSIONS REFER TO UNLESS OTHERWISE SPECIFIED	9 12531 001 1/12/70 8 12080 001 1-15-01 7 10874 001 7-24-01 6 10738 001 5-8-01	DRAWN BY: K. GALIGHIER CHECKED BY: J. SUWOSD DATE: 5-28-08 APP'D BY: W. SCHNEIDER	INTRAAX® AAT ARL KIT CLEVIS & FLAT BRACKET	SCALE: .50=1.00 SHEET: D PART: D-24132
	<small>THIS DRAWING IS THE PROPERTY OF HENDRICKSON</small>				