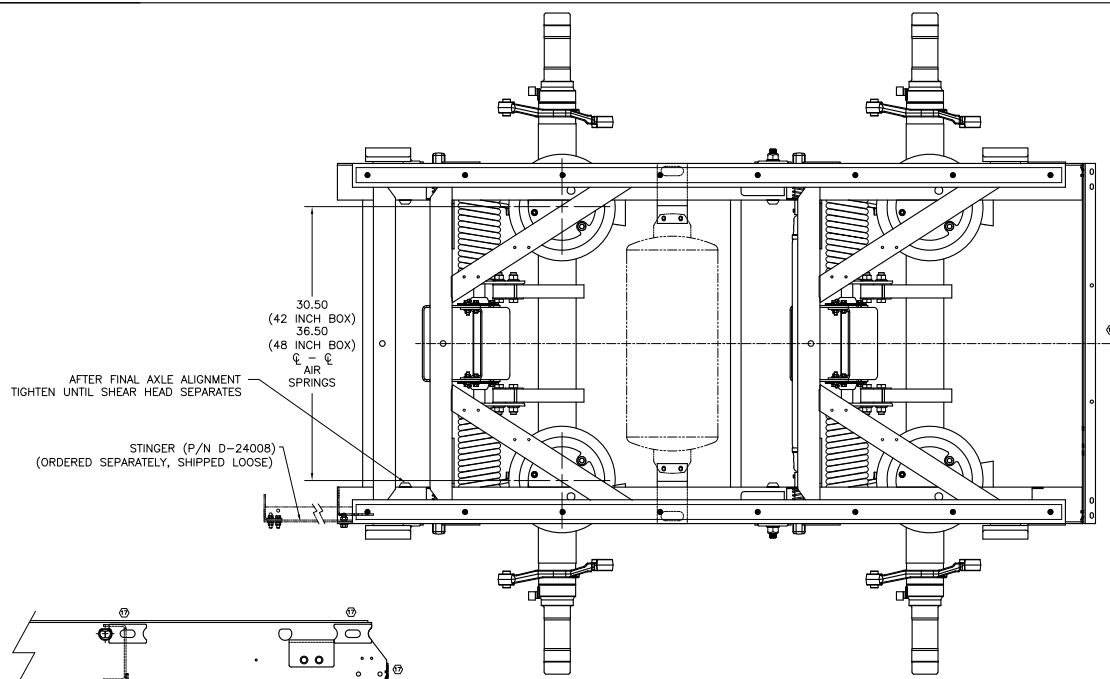


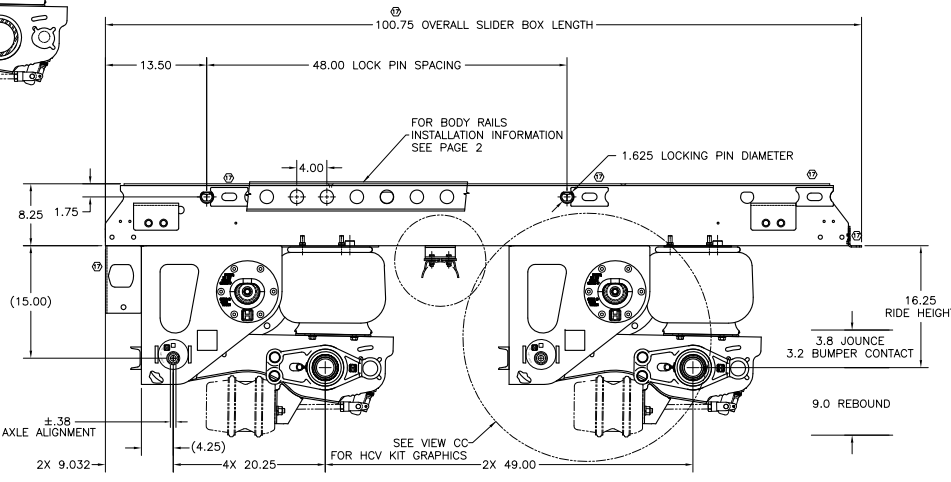
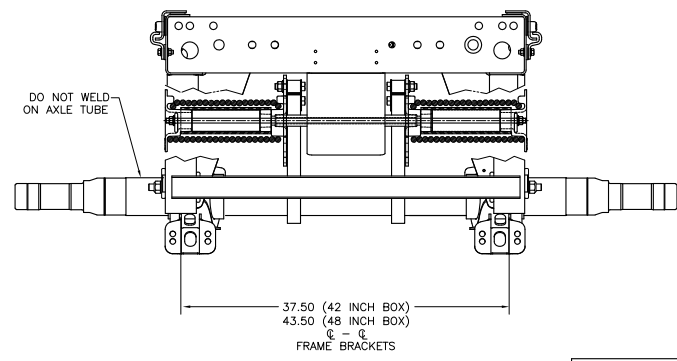
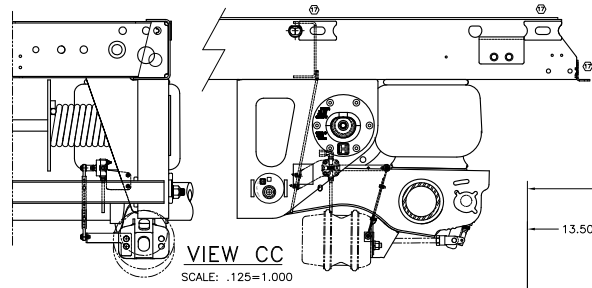
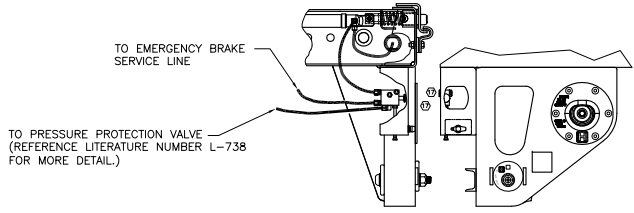
SPINDLE/AXLE STYLE	HP	
BRAKE SIZE	16.5" BRAKES	
AXLE WALL	STD	
CAPACITY	BOX WIDTH	
40K	42"	1895.29
	48"	1954.44

- NOTES:**
1. MANUFACTURED UNDER ONE OR MORE OF THE FOLLOWING PATENTS: OTHER PATENTS PENDING
US PATENT NOS. - 5,366,237 - 4,166,640 - 6,240,806
 2. WEIGHT: SEE CHART (WEIGHT IS FOR UNDRESSED AXLES)
ADD 5.18 LB FOR .18 SHIM OPTION
ADD 5.96 FOR .25 SHIM OPTION
ADD .32 FOR HLS OPTION

- CLEARANCE SPECIFICATIONS:**
- 1.0 INCH MINIMUM CLEARANCE REQUIRED BETWEEN TOP OF TIRE AND BOTTOM OF TRAILER STRUCTURE WHEN AXLE IS AT FULL JOUNCE.
 - 2.0 INCHES MINIMUM CLEARANCE REQUIRED BETWEEN INSIDE OF TIRE AND TRAILER STRUCTURE FOR TIRE AND LATERAL MOVEMENT.
 - .75 INCH MINIMUM CLEARANCE MUST BE MAINTAINED AROUND AIR SPRING WHEN IT IS AT MAXIMUM DIAMETER.



QUIK-DRAW®

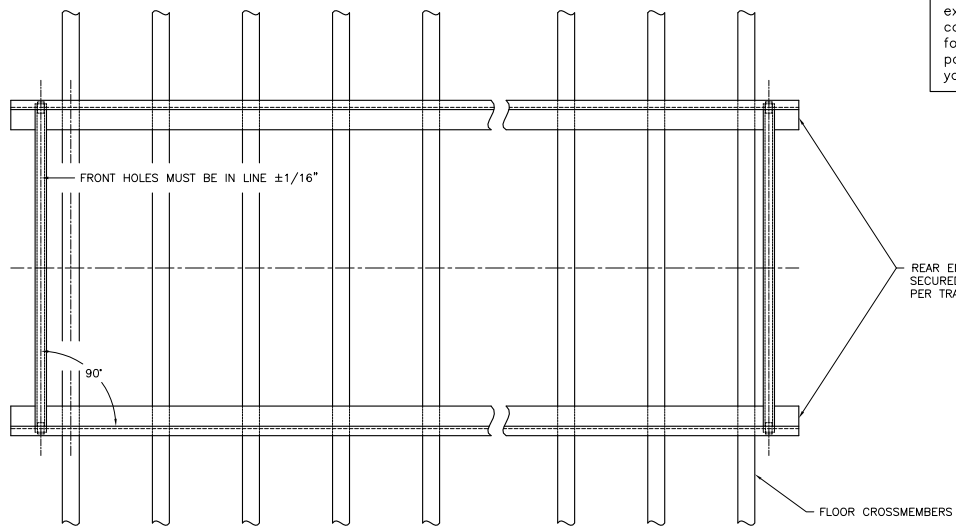


This Print remains the property of Hendrickson. All information contained thereon is confidential. It is loaned, subject to return on demand and on express condition that it is not to be copied or used directly or indirectly for any purpose other than the purpose for which it has been loaned to you.

(SOME ITEMS OMITTED FOR CLARITY)

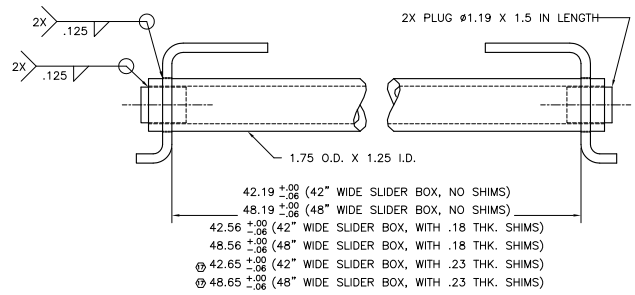
HENDRICKSON <small>TRAILER COMMERCIAL VEHICLE SYSTEMS</small> <small>2015 Madison, Road E., Omaha, NE 68101-0001 USA</small>	<small>UNLESS OTHERWISE NOTED:</small> <small>TOLERANCES ARE:</small> <small>FINISHES ARE:</small> <small>ANGULAR ± 0.5°</small> <small>DIMENSIONS REFER TO AXIS UNLESS INDICATED OTHERWISE</small>	<small>17 20041 L&P 08-09-11</small> <small>16 18043 SEP 5-11-02</small> <small>15 17229 CLA 2-3-02</small> <small>14 16602 L&K 7-28-02</small>	<small>DESIGNED BY P.BILLMAN 8-19-02</small> <small>8-22-02 K. GALIGHIER</small> <small>DATE</small>	<small>8" K-2 FOR RAILROAD</small> <small>INSTALLATION DRAWING</small>	<small>SCALE .125=1.000</small> <small>SHEET D</small> <small>TOTAL 3</small>
	<small>DATE</small>			<small>THE NAME IS THE PROPERTY OF HENDRICKSON</small>	<small>D-27394</small>

This Print remains the property of Hendrickson. All information contained thereon is confidential. It is loaned, subject to return on demand and on express condition that it is not to be copied or used directly or indirectly for any purpose other than the purpose for which it has been loaned to you.



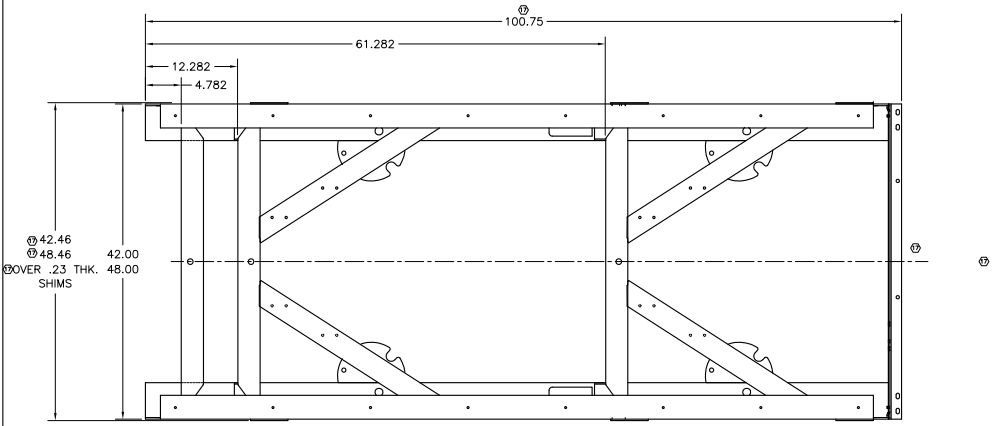
BOTTOM VIEW
BODY RAIL PLACEMENT

REAR END OF BODY RAILS SHOULD BE SECURED TO BUMPER OR TRAILER STRUCTURE PER TRAILER MANUFACTURERS REQUIREMENT.



PIN DIA. 1.625

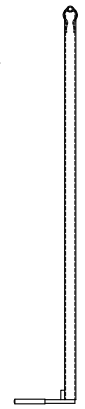
- NOTES:
 1. CONTROL SPACING OF BODY RAILS EVERY 48 INCHES.
 2. POSITIVE STOPS MUST BE PROVIDED BY INSTALLER ON BOTH ENDS OF RAILS (LOCATE IN FIRST AND LAST HOLES), PROPOSED METHOD SHOWN ABOVE.



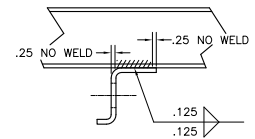
TOP VIEW
SLIDER BOX CROSSMEMBER LOCATIONS

ITEMS ORDERED SEPARATELY, SHIPPED LOOSE

1. BODY RAILS
(NOT SUPPLIED BY HENDRICKSON)
2. SPRAY GUARD MOUNTING ANGLE
P/N S-22428-2 (42" BOX)
P/N S-22428-8 (48" BOX)

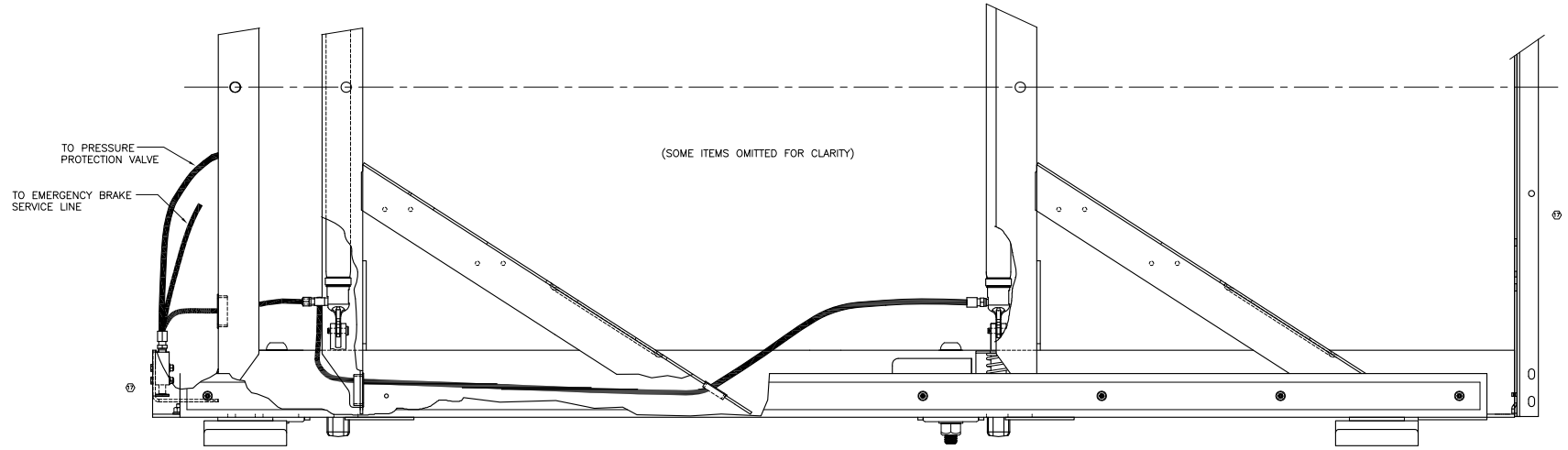


B-21477-2: 4" HOLE CENTER STYLE, 42" BOX
 B-21477-8: 4" HOLE CENTER STYLE, 48" BOX
MANUAL STOP BAR
 (ORDERED SEPARATELY, SHIPPED LOOSE)

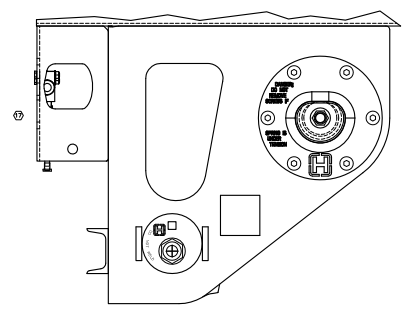
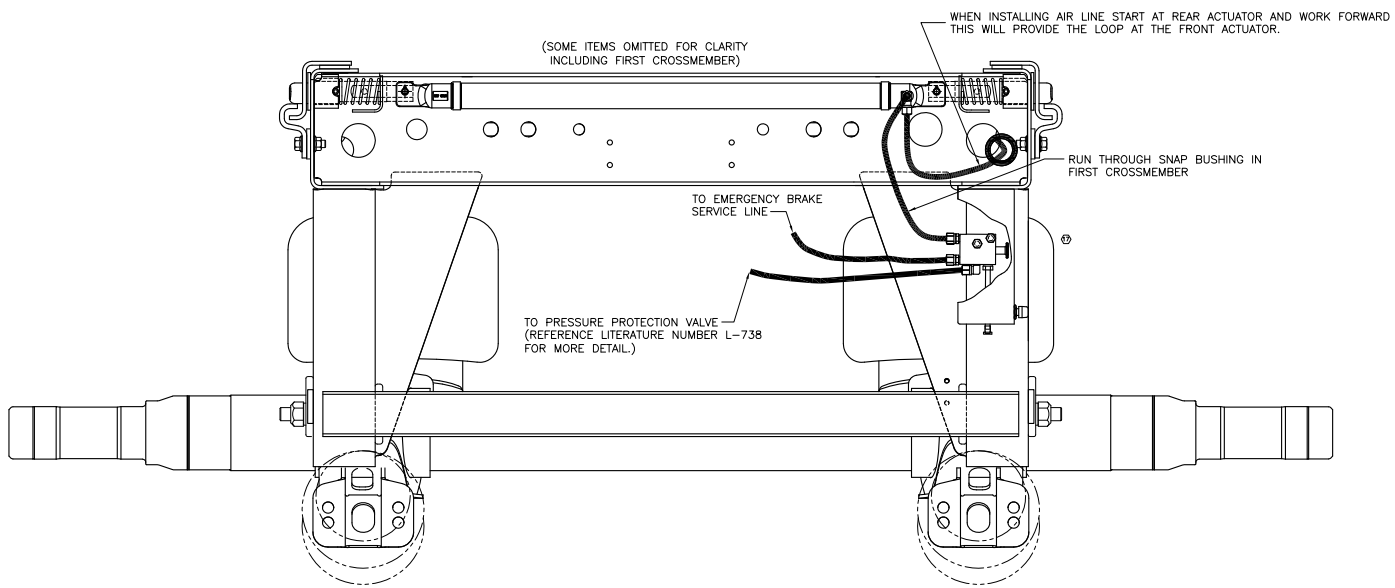


TYPICAL BODY RAIL ATTACHMENT SECTION

- NOTES:
 1. // // // // // DENOTES WELD AREA



This Print remains the property of Hendrickson. All information contained thereon is confidential. It is loaned, subject to return on demand and on express condition that it is not to be copied or used directly or indirectly for any purpose other than the purpose for which it has been loaned to you.



HENDRICKSON <small>TRAILER COMMERCIAL VEHICLE SYSTEMS 2015 Washington, Pa. Rd. • Wichita, KS 67381-2000 USA</small>	<small>UNLESS OTHERWISE NOTED: DIMENSIONS ARE IN INCHES ANGULAR: ± 0.5° DIMENSIONS REFER TO JAW'S 174.334-174.010 (REV. 12/01)</small>	17 20081 L&P 08-29-11 16 18043 SEP 5-11-02 15 17229 CLA 2-3-02 14 16602 L&K 7-28-02	DRAWN BY P. BILLMAN 8-19-02 CHECKED BY K. GALIGHER 8-22-02 DATE T. HESS	SCALE 1:25=1:00 SHEET NO. D OF 3 OF 3
	8" K-2 FOR RAILROAD INSTALLATION DRAWING			PART NO. D-27394