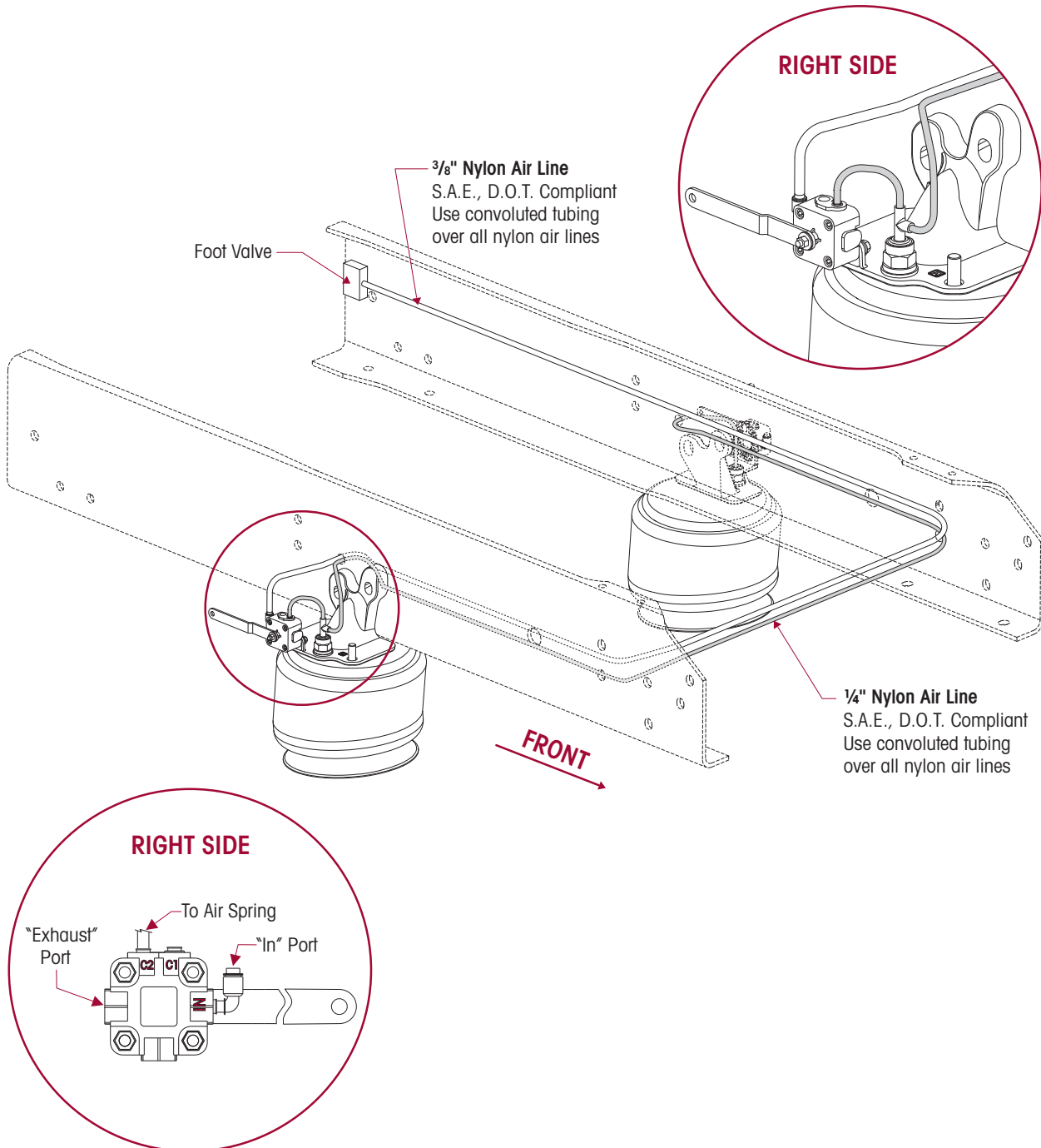


SECTION 10 AIRTEK Plumbing Diagrams

SINGLE HEIGHT CONTROL VALVE (ORIGINALLY EQUIPPED FROM THE MANUFACTURER)

When replacing or installing nylon air line tubing into quick-connect fittings it is critical that the end of the air line is cut square. Improper cut of the end of the air line tubing can cause the air line to seat improperly in the quick connect fitting causing air leakage.





DUAL HEIGHT CONTROL VALVES (ORIGINALLY EQUIPPED FROM THE MANUFACTURER)

When replacing or installing nylon air line tubing into quick-connect fittings it is critical that the end of the air line is cut square. Improper cut of the end of the air line tubing can cause the air line to seat improperly in the quick connect fitting causing air leakage.

The recommendation of the vehicle manufacturer is that dual height control valves are only to be installed on the front suspension when the rear suspension is equipped with a single height control valve system. This arrangement is best suited to keep the vehicle level versus having dual height control systems on both the front and rear suspensions.

