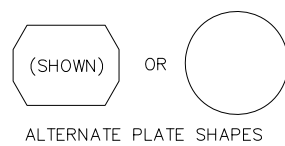
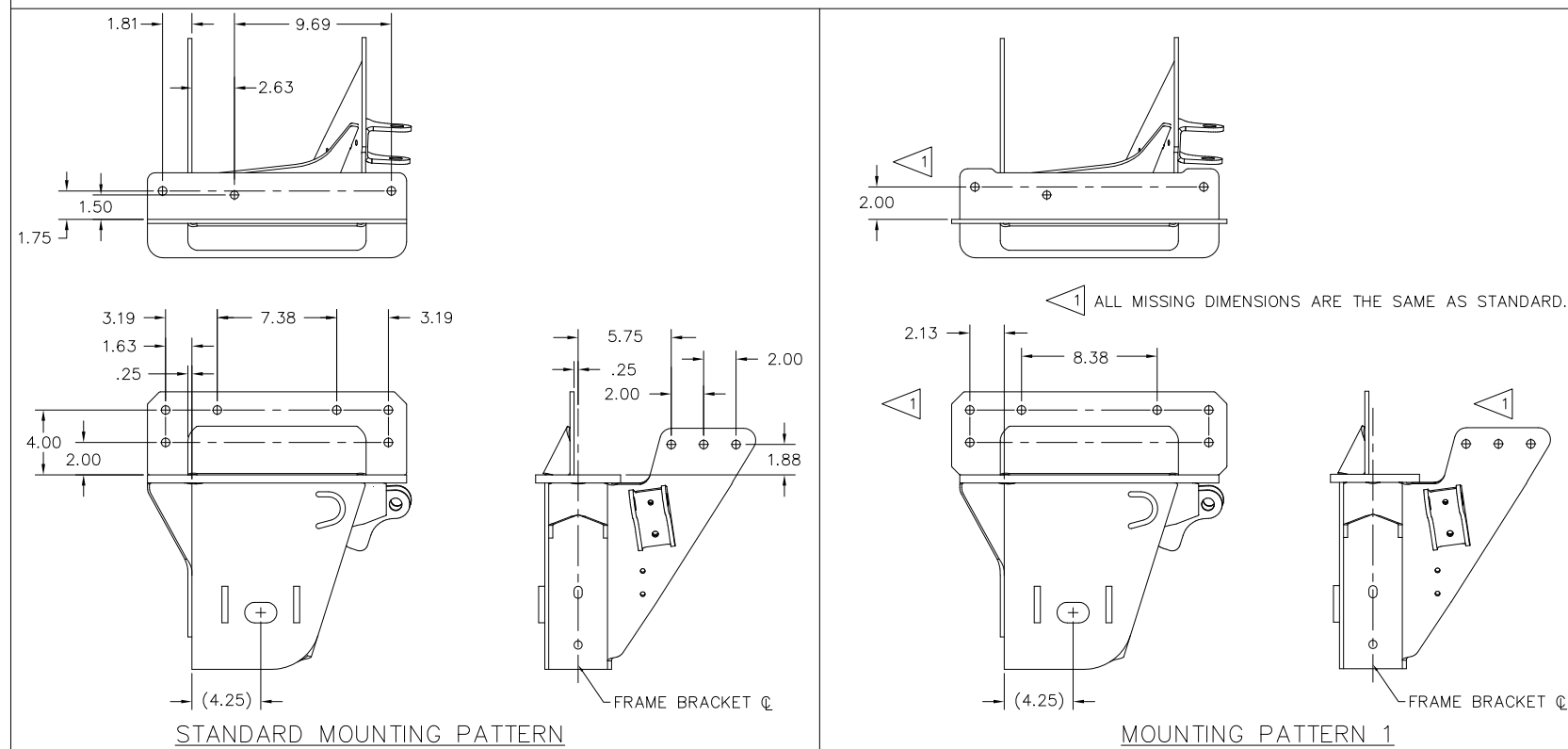


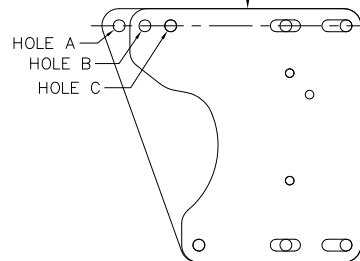
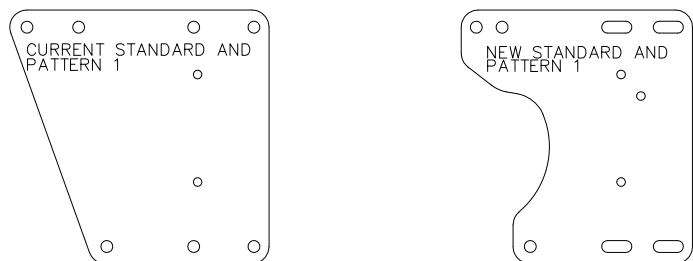
WELD-ON		BOLT-ON			
STANDARD		STANDARD AIR SPRING MTG.	AIR SPRING BOLT PATTERN #1	AIR SPRING BOLT PATTERN #2	AIR SPRING BOLT PATTERN #3
A I R S P R I N G M O U N T I N G					
	STEEL SPACER 		STEEL SPACER 	STEEL SPACER 	STEEL SPACER
	B-20905 B-23294 C-22302 D-27049	B-21145 B-24813	B-21715 B-28245 D-26977 DUTY CYCLE/BEAM PROFILE AAT, AAL, AANT, AANL X AAEDT, AEDL -	B-22390 B-24812 C-22738 D-26977	B-27264 B-27781 C-27265 D-27772



SIDE MOUNT BOLT-ON MOUNTING INFORMATION



AFTERMARKET CONVERSION INSTRUCTIONS



1. REQUIREMENT: ONLY REQUIRED ON THE FOLLOWING MODEL
MODEL: AAL
RIDE HEIGHT: 6.5"-9.0"
BOLT-ON FRAME BRACKET TYPE: STANDARD OR PATTERN 1
 2. HOLE A IS NO LONGER INCLUDED IN THE NEW STANDARD AND PATTERN 1 MOUNTING PLATES
 3. HOLE B IS PRE-DRILLED ON THE MOUNTING PLATE
 4. HOLE C IS COVERED BY THE SHOCK CLEVIS ON THE ABOVE MODELS ONLY, REQUIRING THE USE OF HOLE B
 5. HOLE B IS REQUIRED TO BE DRILLED IN THE TRAILER FRAME
- NOTE: FAILURE TO DRILL AND USE HOLE B COULD RESULT IN BROKEN BOLTS AND DAMAGE TO FRAME BRACKET AND TRAILER FRAME
6. HARDENED WASHERS (PER ASTM F436) ARE RECOMMENDED FOR ALL SLOTTED HOLE LOCATIONS
 7. IF DRILLING OF HOLE A IN THE TRAILER FRAME IS CONTINUED, HENDRICKSON RECOMMENDS FILLING WITH A BOLT

This Print remains the property of Hendrickson. All information contained thereon is confidential. It is loaned, subject to return on demand and on express condition that it is not to be copied or used directly or indirectly for any purpose other than the purpose for which it has been loaned to you.

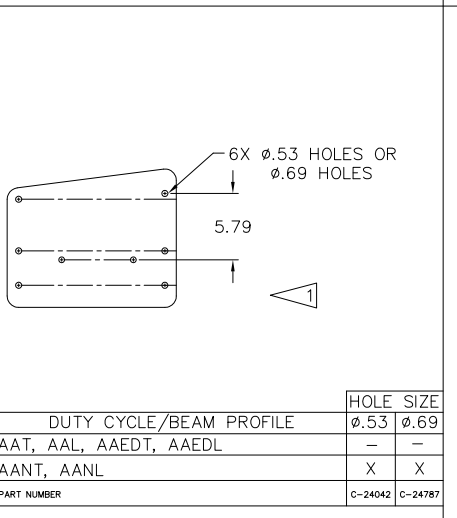
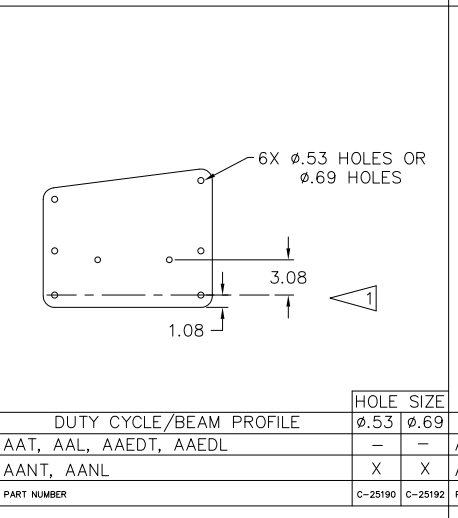
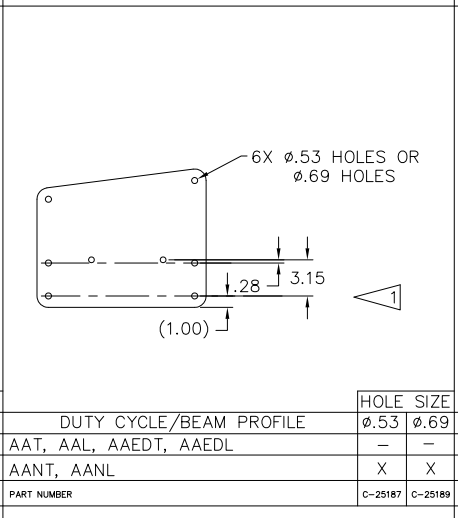
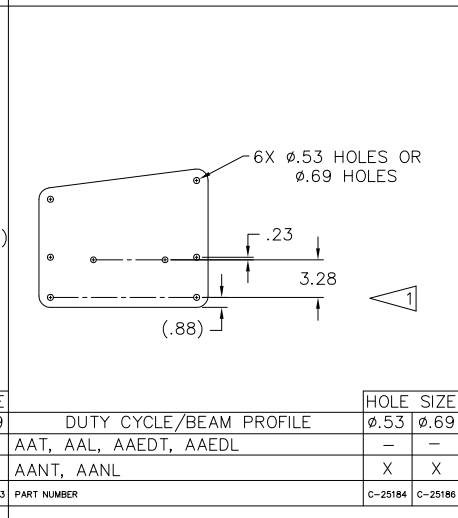
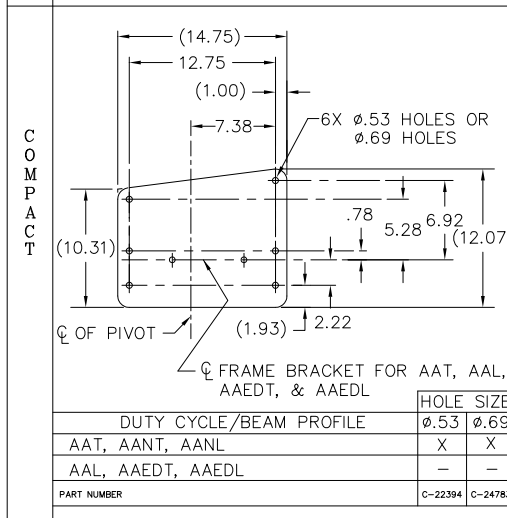
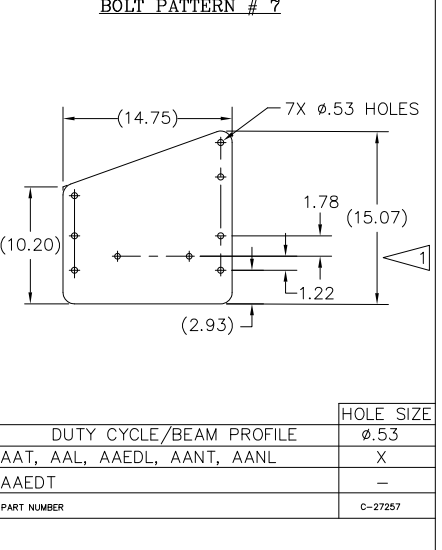
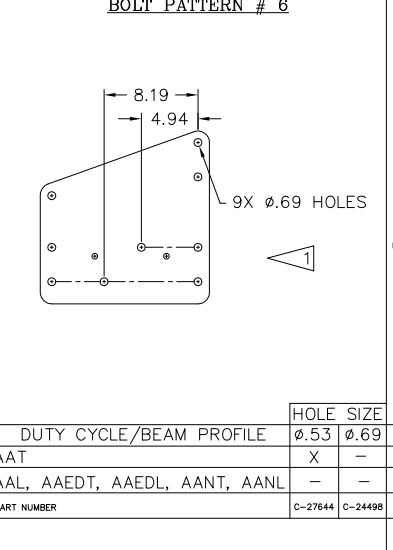
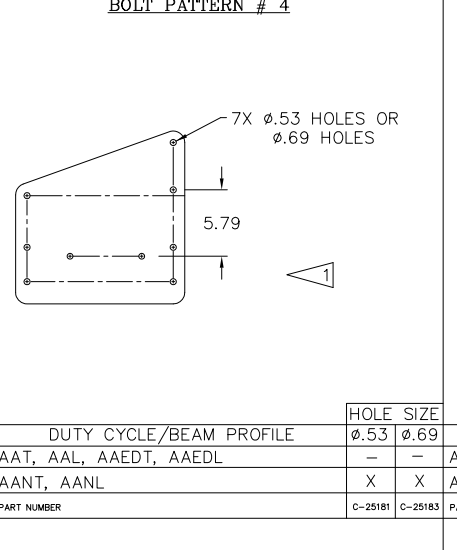
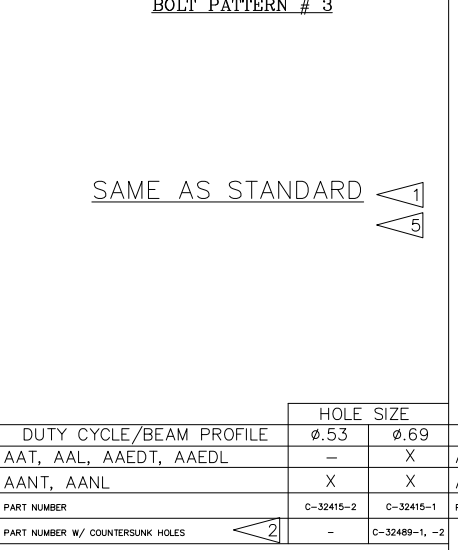
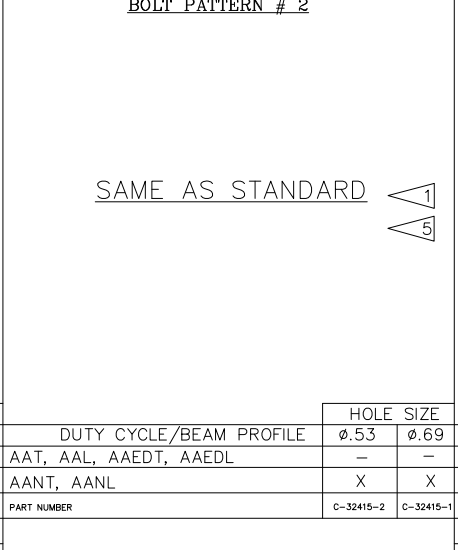
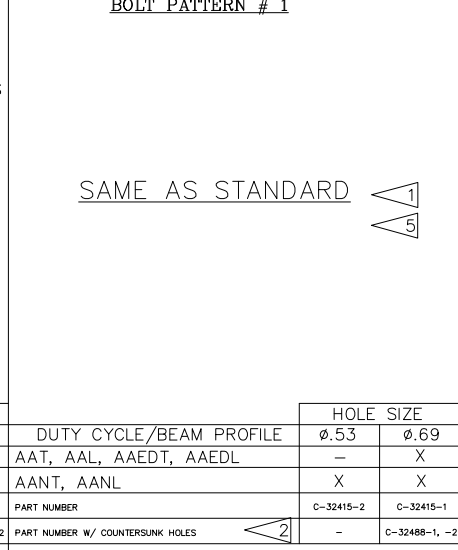
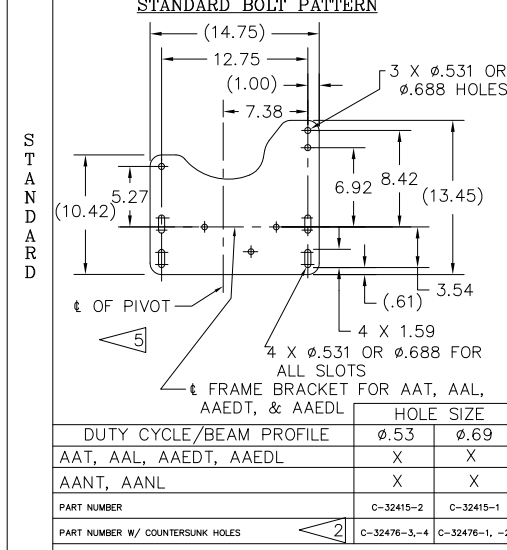


TRAILER COMMERCIAL VEHICLE SYSTEMS
2070 INDUSTRIAL PLACE S.E., CANTON, OH 44707-2600 U.S.A.

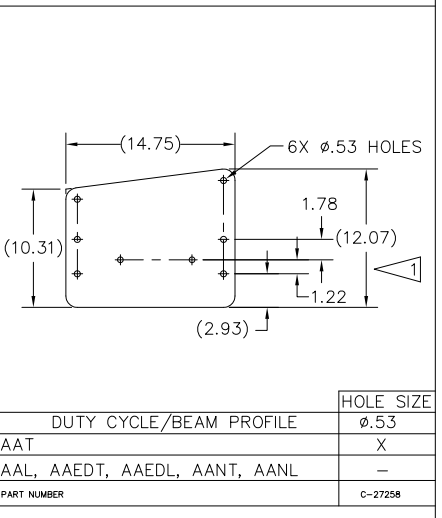
UNLESS OTHERWISE NOTED: TOLERANCES ARE: X: ± XX: ± XXX: ± ANGULAR: ±	18 26252 ZAG 1/30/17 17 24910 RML 1/4/16 16 17420 GDR 2/17/09 15 16839 GDR 7/30/08	26252 ZAG 1/30/17 24910 RML 1/4/16 17420 GDR 2/17/09 16839 GDR 7/30/08	DRAWN BY: P.BILLMAN CHKD BY: G. SHENKLE APPD BY: T.HESS	6-11-01
---	---	---	---	---------

INTRAAAX® BOLT-ON
MOUNTING DRAWING

SCALE	SIZE	PAGE
NTS	D	1 OF 2
D-26651		



NOT AVAILABLE



DUTY CYCLE/BEAM PROFILE	HOLE SIZE	
	Ø.53	Ø.69
AAT, AAL, AAEDT, AAEDL	X	X
AANT, AANL	X	X
PART NUMBER	C-32415-2	C-32415-1
PART NUMBER W/ COUNTERSUNK HOLES	C-32476-3, -4	C-32476-1, -2

DUTY CYCLE/BEAM PROFILE	HOLE SIZE	
	Ø.53	Ø.69
AAT, AAL, AAEDT, AAEDL	-	X
AANT, AANL	X	X
PART NUMBER	C-32415-2	C-32415-1
PART NUMBER W/ COUNTERSUNK HOLES	-	C-32488-1, -2

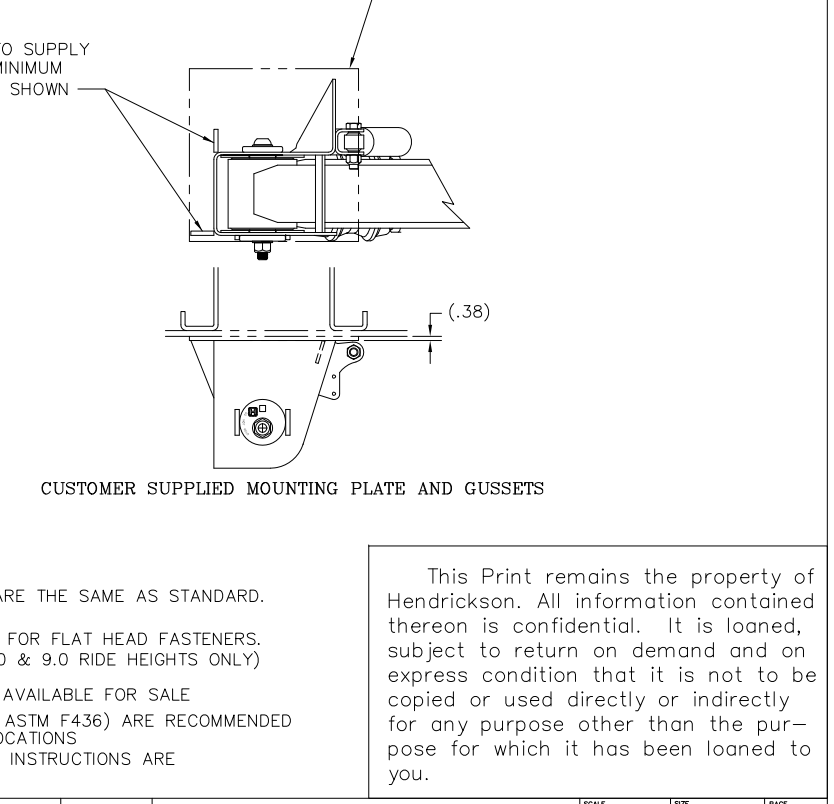
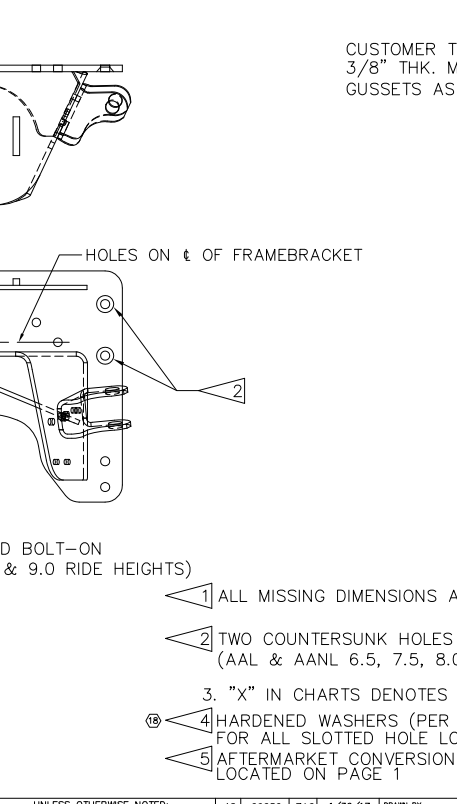
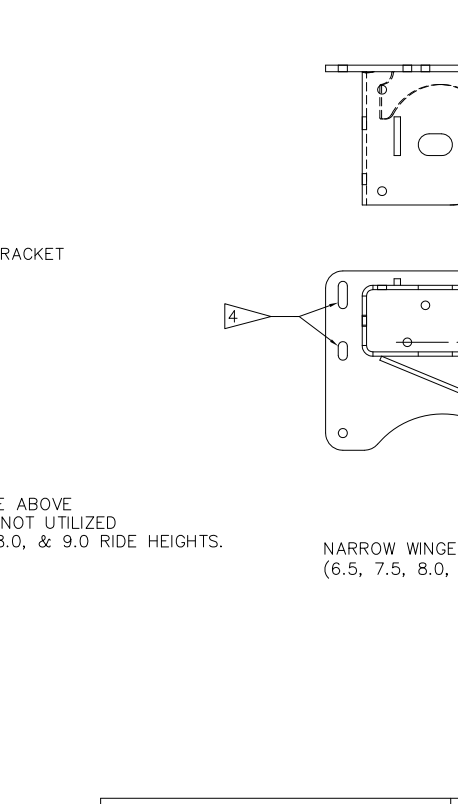
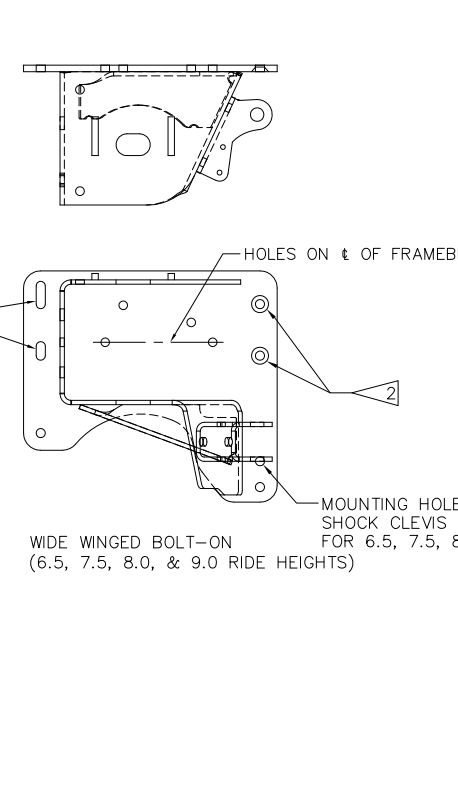
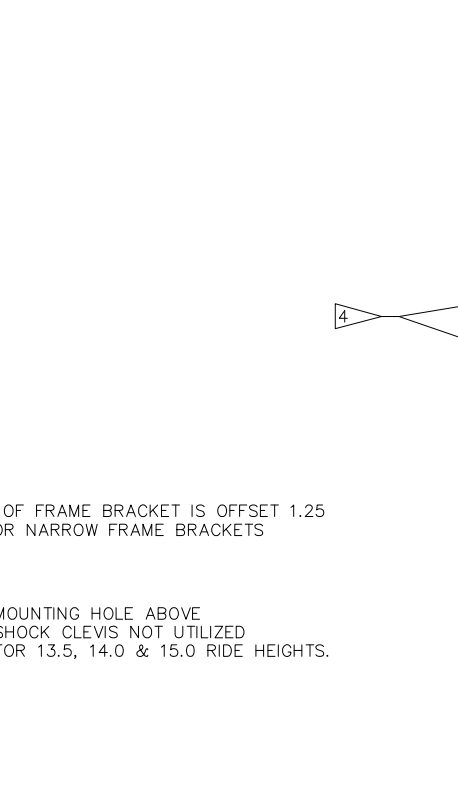
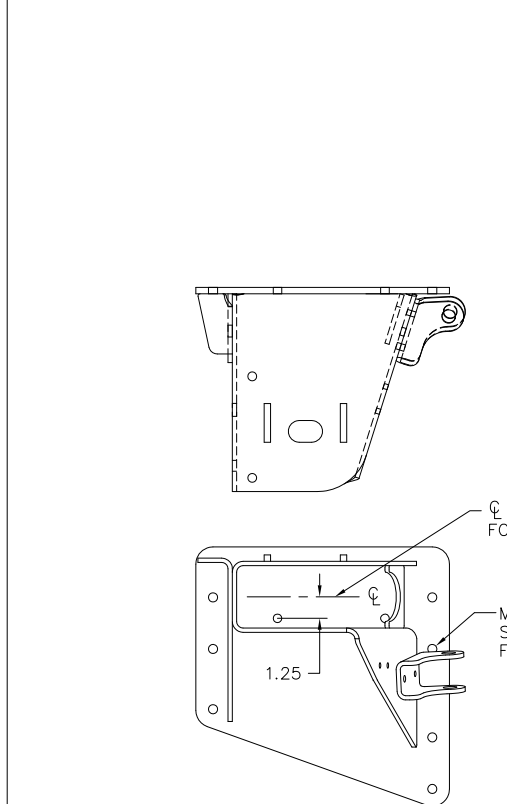
DUTY CYCLE/BEAM PROFILE	HOLE SIZE	
	Ø.53	Ø.69
AAT, AAL, AAEDT, AAEDL	-	-
AANT, AANL	X	X
PART NUMBER	C-32415-2	C-32415-1
PART NUMBER W/ COUNTERSUNK HOLES	-	C-32489-1, -2

DUTY CYCLE/BEAM PROFILE	HOLE SIZE	
	Ø.53	Ø.69
AAT, AAL, AAEDT, AAEDL	-	X
AANT, AANL	X	X
PART NUMBER	C-32415-2	C-32415-1
PART NUMBER W/ COUNTERSUNK HOLES	-	C-32489-1, -2

DUTY CYCLE/BEAM PROFILE	HOLE SIZE	
	Ø.53	Ø.69
AAT, AAL, AAEDT, AAEDL	-	-
AANT, AANL	X	X
PART NUMBER	C-25181	C-25183
PART NUMBER W/ COUNTERSUNK HOLES	-	C-24498

DUTY CYCLE/BEAM PROFILE	HOLE SIZE	
	Ø.53	Ø.69
AAT	X	-
AAL, AAEDT, AAEDL, AANT, AANL	-	-
PART NUMBER	C-27644	C-24498
PART NUMBER W/ COUNTERSUNK HOLES	-	C-27257

DUTY CYCLE/BEAM PROFILE	HOLE SIZE	
	Ø.53	Ø.69
AAT	-	-
AAL, AAEDT, AAEDL, AANT, AANL	-	-
PART NUMBER	C-27644	C-24498
PART NUMBER W/ COUNTERSUNK HOLES	-	C-27257



NARROW WINGED BOLT-ON (BOLT PATTERN #7)

WIDE WINGED BOLT-ON (6.5, 7.5, 8.0, & 9.0 RIDE HEIGHTS)

NARROW WINGED BOLT-ON (6.5, 7.5, 8.0, & 9.0 RIDE HEIGHTS)

NARROW WINGED BOLT-ON (6.5, 7.5, 8.0, & 9.0 RIDE HEIGHTS)

NARROW WINGED BOLT-ON (6.5, 7.5, 8.0, & 9.0 RIDE HEIGHTS)

CUSTOMER SUPPLIED MOUNTING PLATE AND GUSSETS

- 1 ALL MISSING DIMENSIONS ARE THE SAME AS STANDARD.
- 2 TWO COUNTERSUNK HOLES FOR FLAT HEAD FASTENERS. (AAL & AANL 6.5, 7.5, 8.0 & 9.0 RIDE HEIGHTS ONLY)
- 3. "X" IN CHARTS DENOTES AVAILABLE FOR SALE
- 4 HARDENED WASHERS (PER ASTM F436) ARE RECOMMENDED FOR ALL SLOTTED HOLE LOCATIONS
- 5 AFTERMARKET CONVERSION INSTRUCTIONS ARE LOCATED ON PAGE 1

This Print remains the property of Hendrickson. All information contained thereon is confidential. It is loaned, subject to return on demand and on express condition that it is not to be copied or used directly or indirectly for any purpose other than the purpose for which it has been loaned to you.