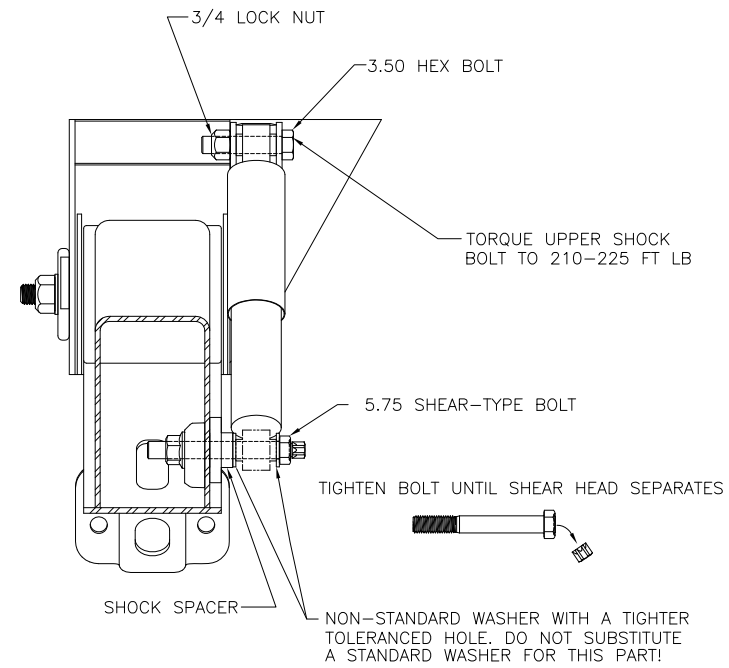


NOTES:

- SEE L1073 FOR INFORMATION ON ASSEMBLY, WELDING PROCEDURE, AND ALIGNMENT.
- SEE SERVICE MANUAL FOR INFORMATION CONCERNING MAINTENANCE PROCEDURE.
- MANUFACTURED UNDER ONE OR MORE OF THE FOLLOWING PATENTS:
OTHER PATENTS PENDING U.S. PATENT NOS. - 5,366,237 - 4,166,640
- REQUIRED CROSSMEMBER LOCATIONS ARE SHOWN. ACTUAL SIZE AND SHAPE MAY VARY WITH TRAILER DESIGN. IT IS THE RESPONSIBILITY OF THE SUSPENSION INSTALLER TO ENSURE STRUCTURAL ADEQUACY OF TRAILER FRAME AND CROSSMEMBERS.
- SEE L1182 FOR HEIGHT CONTROL KIT OPTIONS.
- SEE PAGE 3 FOR C-CHANNEL REQUIREMENTS.
- FOR NON HENDRICKSON SLIDER, THE OPTION OF NONE FOR FRAME ATTACHMENT SHOULD BE SELECTED. THE SUSPENSION WILL BE SHIPPED WITHOUT FRAME BRACKETS AND AIR SPRING MOUNTING PLATES. THE SFK CONTAINS FRAME BRACKETS AND AIR SPRING MOUNTING PLATES. THIS KIT IS PURCHASED SEPARATELY AND SHIPPED DIRECTLY TO THE SLIDER MANUFACTURER.
- NOTE SPECIAL AIR SPRING MOUNTING FOR 30K SUSPENSIONS.
- SEE D-29431 FOR DIMENSIONS AND CROSSMEMBER LOCATIONS.
- FOR BOLT-ON MOUNTING PATTERNS, SEE DRAWING D-26651.



O.E.M. INSTALLED SHOCK BOLT KIT

CAUTION

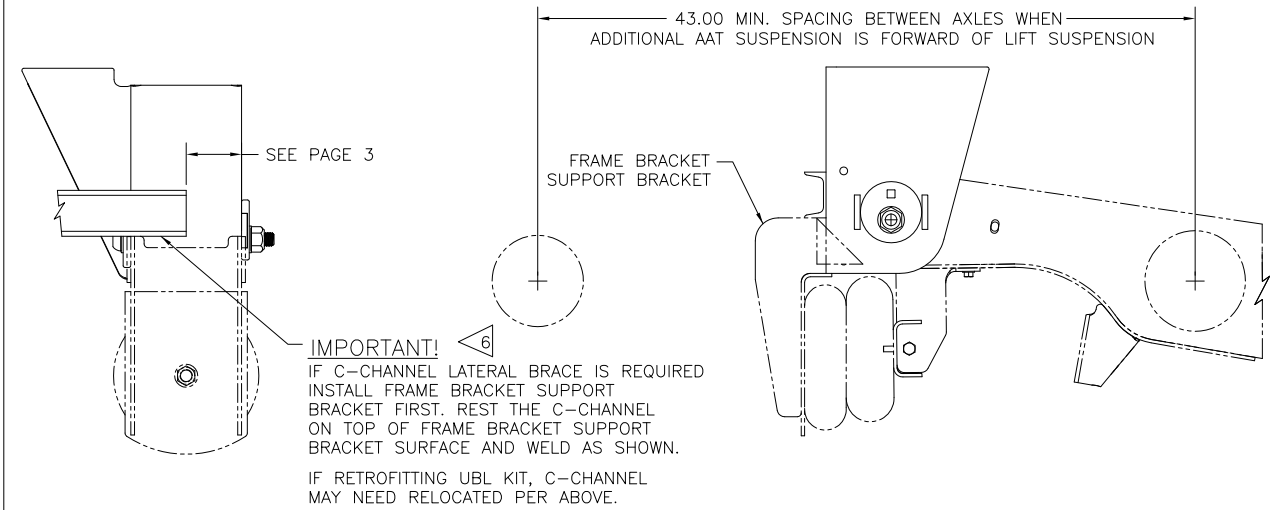
CLEARANCE SPECIFICATIONS:

- 1.0 INCH MINIMUM CLEARANCE REQUIRED BETWEEN TOP OF TIRE AND BOTTOM OF TRAILER STRUCTURE WHEN AXLE IS AT FULL JOUNCE.
- 2.0 INCHES MINIMUM CLEARANCE REQUIRED BETWEEN INSIDE OF TIRE AND TRAILER STRUCTURE FOR LATERAL MOVEMENT.
- .75 INCH MINIMUM CLEARANCE MUST BE MAINTAINED AROUND AIR SPRING WHEN IT IS AT MAXIMUM DIAMETER.
- SEE "30K AIR SPRING MOUNTING" VIEW FOR MINIMUM AIR SPRING BEAD PLATE CLEARANCE FOR 30K SUSPENSIONS.

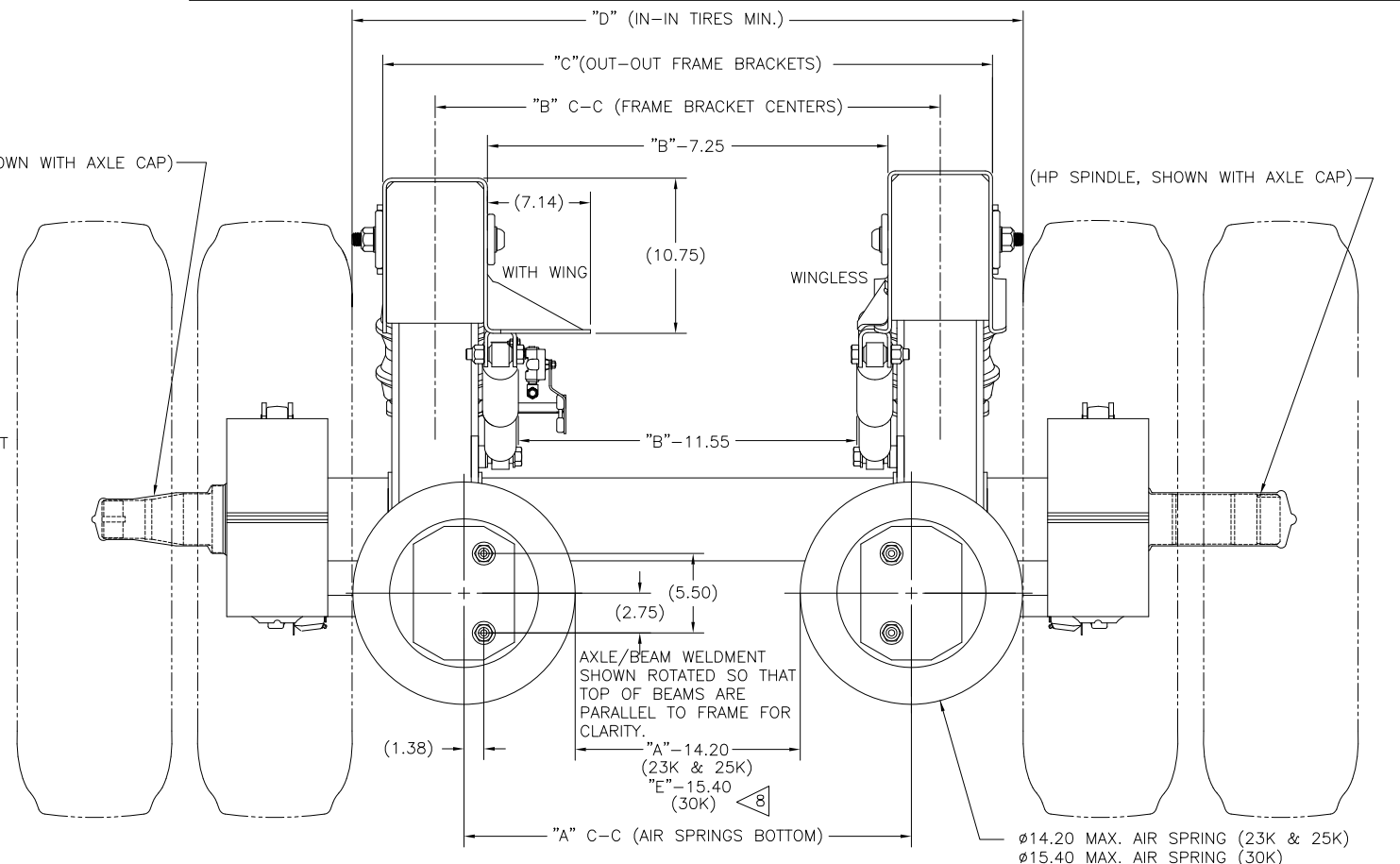
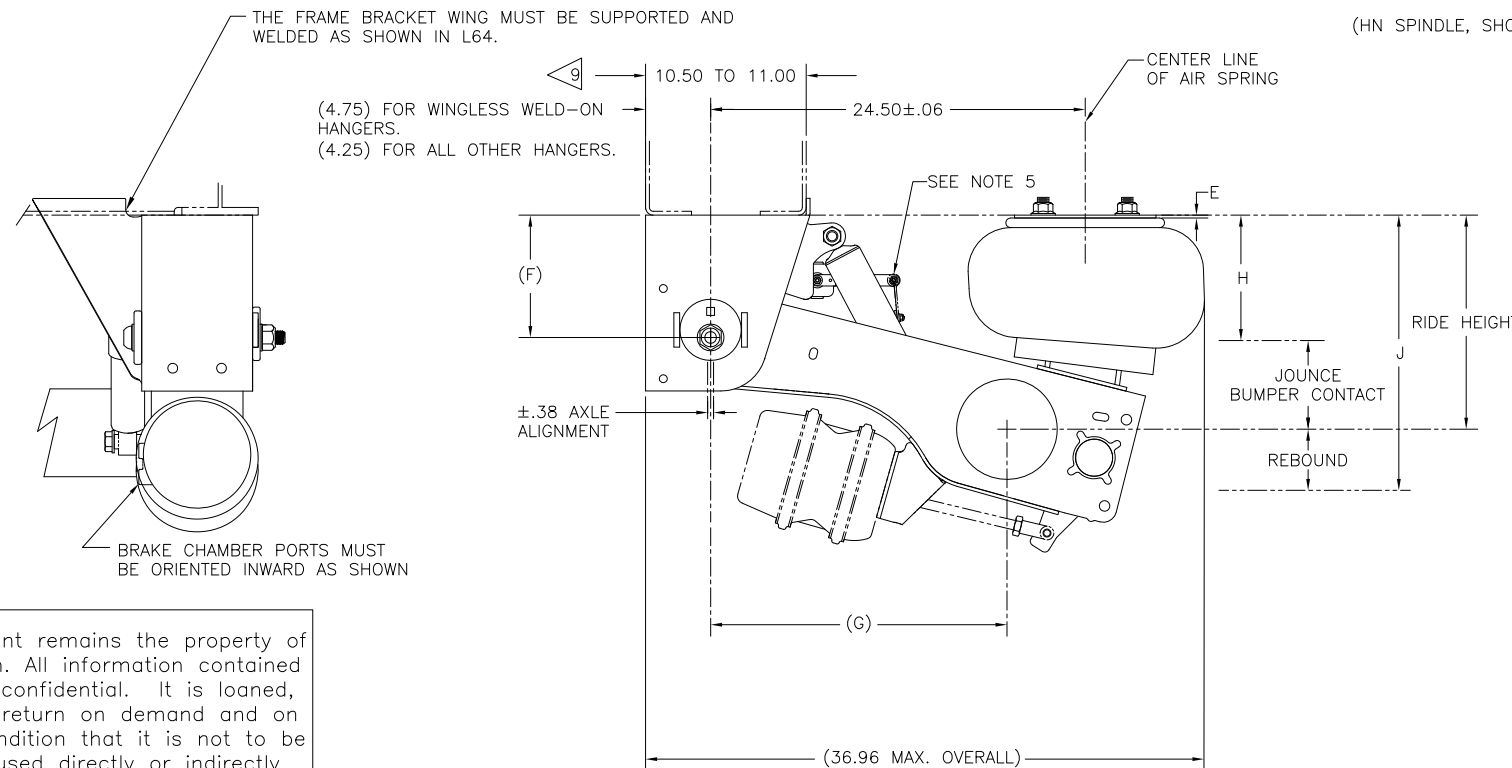
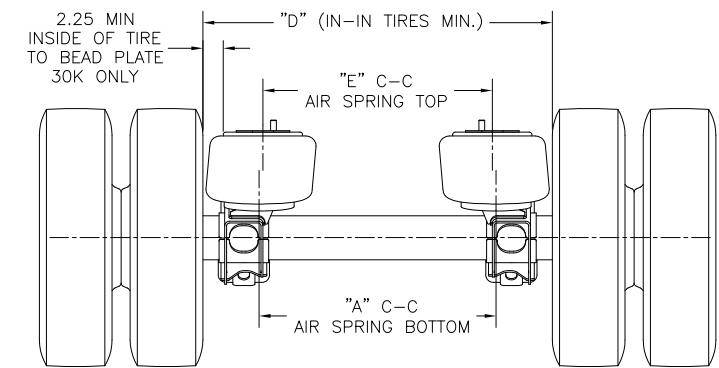
| MODEL | 23K & 25K | | | | | 30K | | | | |
|---------------------|-----------|-------|-------|-------|-------|-------|-------|-------|-------|-------|
| | 71.5 | 73.0 | 77.5 | 83.5 | 85.0 | 71.5 | 73.0 | 77.5 | 83.5 | 85.0 |
| TRACK WIDTH | 71.5 | 73.0 | 77.5 | 83.5 | 85.0 | 71.5 | 73.0 | 77.5 | 83.5 | 85.0 |
| DIMENSION "A" (IN) | 31.00 | 32.50 | 37.00 | 43.00 | 44.50 | 31.00 | 32.50 | 37.00 | 43.00 | 44.50 |
| DIMENSION "B" (IN) | 35.00 | 36.50 | 41.00 | 47.00 | 48.50 | 35.00 | 36.50 | 41.00 | 47.00 | 48.50 |
| DIMENSION "C" (IN) | 42.25 | 43.75 | 48.25 | 54.25 | 55.75 | 42.25 | 43.75 | 48.25 | 54.25 | 55.75 |
| DIMENSION "D" (IN)* | 46.50 | 48.00 | 52.50 | 58.50 | 60.00 | 46.50 | 48.00 | 52.50 | 58.50 | 60.00 |
| DIMENSION "E" (IN) | 31.00 | 32.50 | 37.00 | 43.00 | 44.50 | 30.00 | 31.50 | 36.00 | 42.00 | 43.50 |

*Contact Hendrickson Engineering for direction when Tire Spacing is less than the charted values

C-CHANNEL REQUIREMENT WHEN USING UNDER BEAM LIFT ASSEMBLY



30K AIR SPRING MOUNTING



This Print remains the property of Hendrickson. All information contained thereon is confidential. It is loaned, subject to return on demand and on express condition that it is not to be copied or used directly or indirectly for any purpose other than the purpose for which it has been loaned to you.

SEE PAGE 2 FOR TABULATED DIMENSIONS SHOWN ABOVE

| AAT 23K DIMENSIONS | | | | | | | | | | |
|------------------------|--------|---------|----------------|------|------|------|------|------|------|--|
| RIDE HEIGHT | JOUNCE | REBOUND | BUMPER CONTACT | E | F | G | H | J | | |
| STANDARD TRAVEL | | | | | | | | | | |
| 13.5 | 3.1 | 5.4 | 2.5 | .19 | 8.0 | 19.5 | 10.4 | 18.9 | | |
| 14.0 | 3.6 | 4.9 | 3.0 | | | 19.4 | | | | |
| 15.0 | 3.7 | 3.9 | 3.2 | | | 19.0 | | | 11.3 | |
| 16.0 | 3.8 | 4.8 | 3.2 | .94 | 10.0 | 19.4 | 12.2 | 20.8 | | |
| 17.0 | 3.8 | 3.8 | 3.2 | .19 | | 19.0 | 13.2 | | | |
| 18.0 | 3.8 | 4.8 | 3.3 | .94 | 12.0 | 19.4 | 14.2 | 22.8 | | |
| 19.0 | 3.9 | 3.8 | 3.3 | 2.06 | | 19.0 | 15.1 | | | |
| LIMITED REBOUND TRAVEL | | | | | | | | | | |
| 14.0 | 3.6 | 3.6 | 3.0 | .19 | 8.0 | 19.4 | 10.4 | 17.5 | | |
| 16.0 | 3.8 | 3.3 | 3.2 | .94 | 10.0 | | 12.2 | | 19.3 | |
| 18.0 | 3.8 | 3.3 | 3.3 | | 12.0 | | 14.2 | | 21.3 | |
| HIGH CONTROL TRAVEL | | | | | | | | | | |
| 13.5 | 2.7 | 5.9 | 2.2 | .19 | 10.0 | 20.0 | 10.8 | 19.4 | | |
| 14.0 | 3.2 | 5.4 | 2.7 | | | 19.9 | | | | |
| 15.0 | 3.4 | 4.4 | 2.8 | | | 19.7 | | | 11.6 | |
| 16.0 | 3.5 | 5.7 | 2.9 | .94 | 12.0 | 19.9 | 12.5 | 21.7 | | |
| 17.0 | 3.5 | 4.7 | 2.9 | .19 | | 19.7 | 13.5 | | | |
| LIMITED JOUNCE TRAVEL | | | | | | | | | | |
| 14.0 | 2.7 | 4.9 | 2.2 | .19 | 8.0 | 19.4 | 11.3 | 18.9 | | |
| 15.0 | 2.8 | 3.9 | 2.3 | 1.31 | | 19.0 | 12.2 | | | |
| 16.0 | 2.8 | 4.8 | 2.2 | .19 | | 19.4 | 13.2 | | | |
| 17.0 | 2.9 | 3.8 | 2.3 | 1.31 | 10.0 | 19.0 | 14.1 | 20.8 | | |

| AAT 25K DIMENSIONS | | | | | | | | | | |
|------------------------|--------|---------|----------------|------|------|------|------|------|------|--|
| RIDE HEIGHT | JOUNCE | REBOUND | BUMPER CONTACT | E | F | G | H | J | | |
| STANDARD TRAVEL | | | | | | | | | | |
| 13.5 | 2.9 | 5.4 | 2.3 | .19 | 8.0 | 19.5 | 10.6 | 18.9 | | |
| 14.0 | 3.4 | 4.9 | 2.8 | | | 19.4 | | | | |
| 15.0 | 3.6 | 3.9 | 3.0 | | | 19.0 | | | 11.5 | |
| 16.0 | 3.6 | 4.8 | 3.0 | .94 | 10.0 | 19.4 | 12.5 | 20.8 | | |
| 17.0 | 3.6 | 3.8 | 3.1 | .19 | | 19.0 | 13.5 | | | |
| 18.0 | 3.7 | 4.8 | 3.1 | .94 | 12.0 | 19.4 | 14.4 | 22.8 | | |
| 19.0 | 3.7 | 3.8 | 3.2 | 2.06 | | 19.0 | 15.4 | | | |
| LIMITED REBOUND TRAVEL | | | | | | | | | | |
| 14.0 | 3.4 | 3.6 | 2.8 | .19 | 8.0 | 19.4 | 10.7 | 17.6 | | |
| 16.0 | 3.6 | 3.3 | 3.0 | .94 | 10.0 | | 12.5 | | 19.3 | |
| 18.0 | 3.7 | 3.3 | 3.1 | | 12.0 | | 14.4 | | 21.3 | |
| HIGH CONTROL TRAVEL | | | | | | | | | | |
| 13.5 | 2.6 | 5.9 | 2.0 | .19 | 10.0 | 20.0 | 11.0 | 19.4 | | |
| 14.0 | 3.1 | 5.4 | 2.5 | | | 19.9 | | | | |
| 15.0 | 3.2 | 4.4 | 2.7 | | | 19.7 | | | 11.9 | |
| 16.0 | 3.3 | 5.7 | 2.7 | .94 | 12.0 | 19.9 | 12.8 | 21.7 | | |
| 17.0 | 3.3 | 4.7 | 2.7 | .19 | | 19.7 | 13.8 | | | |
| LIMITED JOUNCE TRAVEL | | | | | | | | | | |
| 14.0 | 2.6 | 4.9 | 2.0 | .19 | 8.0 | 19.4 | 11.4 | 18.9 | | |
| 15.0 | 2.7 | 3.9 | 2.1 | 1.31 | | 19.0 | 12.3 | | | |
| 16.0 | 2.6 | 4.8 | 2.1 | .19 | | 19.4 | 13.4 | | | |
| 17.0 | 2.7 | 3.8 | 2.2 | 1.31 | 10.0 | 19.0 | 14.3 | 20.8 | | |

| AAT 30K DIMENSIONS | | | | | | | | | | |
|-----------------------|--------|---------|----------------|------|------|------|------|------|------|--|
| RIDE HEIGHT | JOUNCE | REBOUND | BUMPER CONTACT | E | F | G | H | J | | |
| STANDARD TRAVEL | | | | | | | | | | |
| 13.5 | 2.9 | 5.4 | 2.3 | .19 | 8.0 | 19.5 | 10.6 | 18.9 | | |
| 14.0 | 3.4 | 4.9 | 2.8 | | | 19.4 | | | | |
| 15.0 | 3.6 | 3.9 | 3.0 | | | 19.0 | | | 11.5 | |
| 16.0 | 3.6 | 4.8 | 3.0 | .94 | 10.0 | 19.4 | 12.5 | 20.8 | | |
| 17.0 | 3.6 | 3.8 | 3.1 | .19 | | 19.0 | 13.5 | | | |
| 18.0 | 3.7 | 4.8 | 3.1 | .94 | 12.0 | 19.4 | 14.4 | 22.8 | | |
| 19.0 | 3.7 | 3.8 | 3.2 | 2.06 | | 19.0 | 15.4 | | | |
| HIGH CONTROL TRAVEL | | | | | | | | | | |
| 13.5 | 2.6 | 5.9 | 2.0 | .19 | 10.0 | 20.0 | 11.0 | 19.4 | | |
| 14.0 | 3.1 | 5.4 | 2.5 | | | 19.9 | | | | |
| 15.0 | 3.2 | 4.4 | 2.7 | | | 19.7 | | | 11.9 | |
| 16.0 | 3.3 | 5.7 | 2.7 | .94 | 12.0 | 19.9 | 12.8 | 21.7 | | |
| 17.0 | 3.3 | 4.7 | 2.7 | .19 | | 19.7 | 13.8 | | | |
| LIMITED JOUNCE TRAVEL | | | | | | | | | | |
| 14.0 | 2.6 | 4.9 | 2.0 | .19 | 8.0 | 19.4 | 11.4 | 18.9 | | |
| 15.0 | 2.7 | 3.9 | 2.1 | 1.31 | | 19.0 | 12.3 | | | |
| 16.0 | 2.6 | 4.8 | 2.1 | .19 | | 19.4 | 13.4 | | | |
| 17.0 | 2.7 | 3.8 | 2.2 | 1.31 | 10.0 | 19.0 | 14.3 | 20.8 | | |

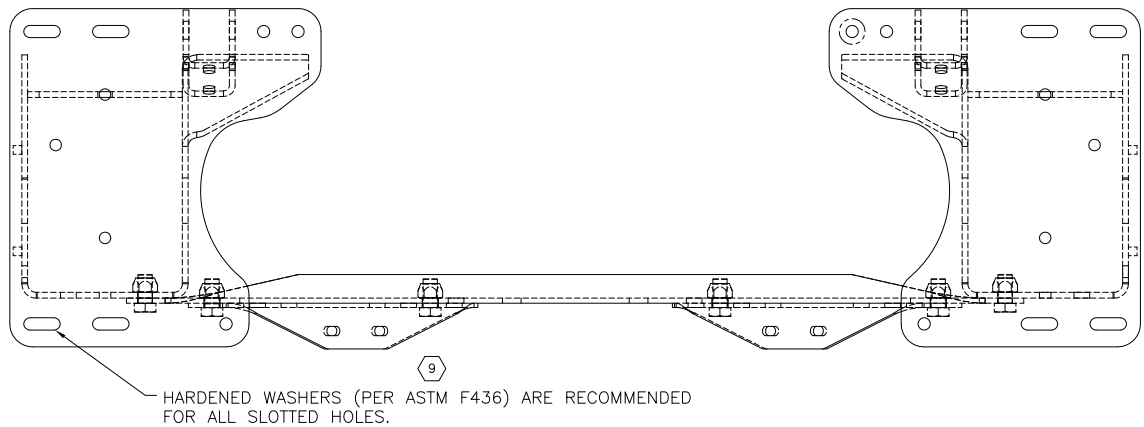
NOTES:

- SEE L600 FOR SUSPENSION WEIGHT.
- SEE L1073 FOR RIDE HEIGHT RANGE.

- 3 JOUNCE AND REBOUND DIMENSIONS CHANGE AS THE RIDE HEIGHT CHANGES FROM THE NOMINAL POSITION.
- 4 DIMENSIONS "H" & "J" WILL REMAIN CONSTANT REGARDLESS OF RIDE HEIGHT VARIATION FROM NOMINAL POSITION.
- RIDE HEIGHT - JOUNCE = "H"
RIDE HEIGHT + REBOUND = "J"

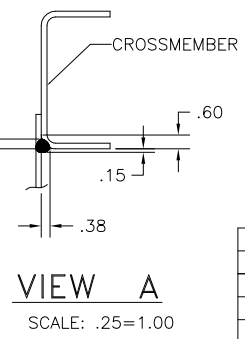
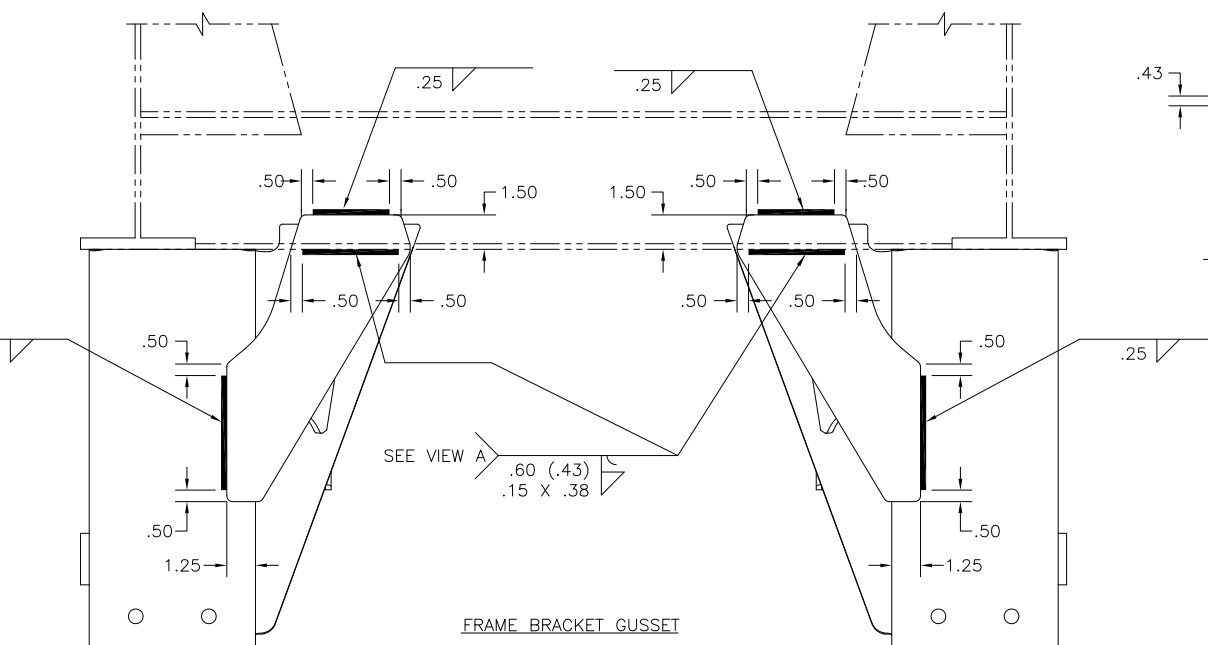
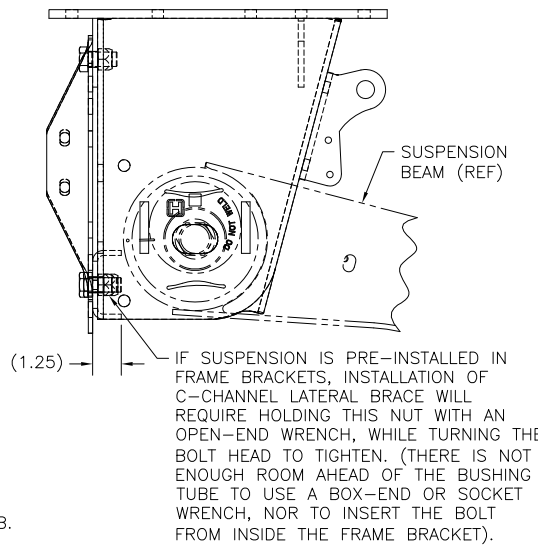
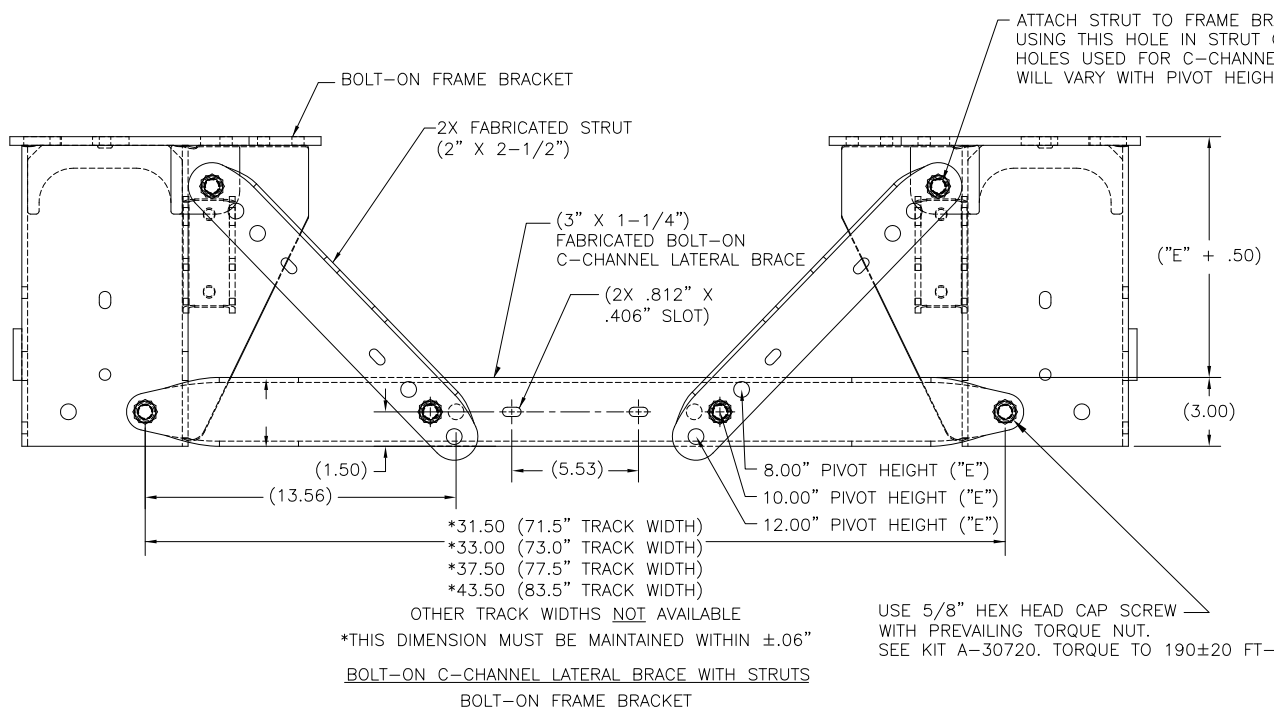
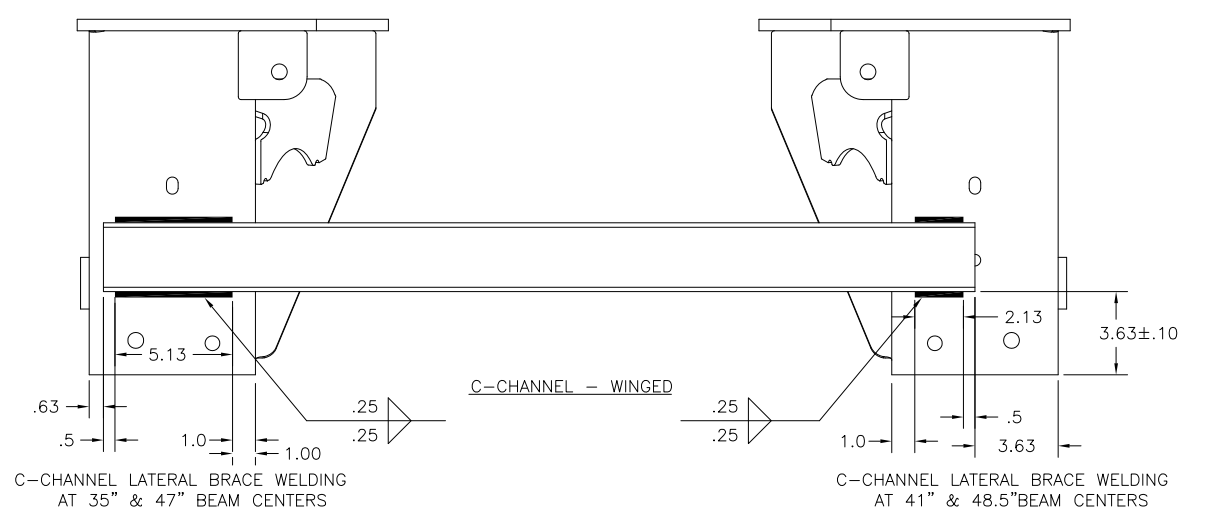
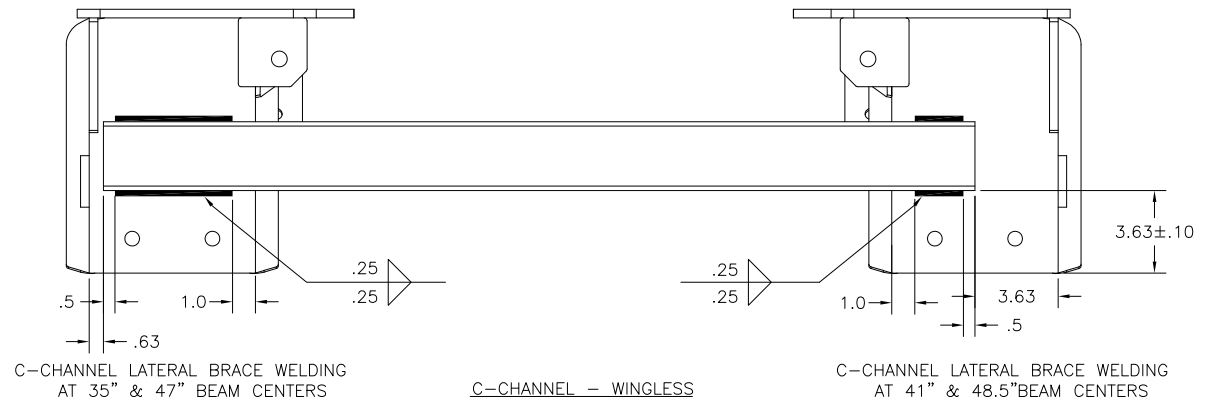
This Print remains the property of Hendrickson. All information contained thereon is confidential. It is loaned, subject to return on demand and on express condition that it is not to be copied or used directly or indirectly for any purpose other than the purpose for which it has been loaned to you.

This Print remains the property of Hendrickson. All information contained thereon is confidential. It is loaned, subject to return on demand and on express condition that it is not to be copied or used directly or indirectly for any purpose other than the purpose for which it has been loaned to you.



INSTALLATION SEQUENCE:

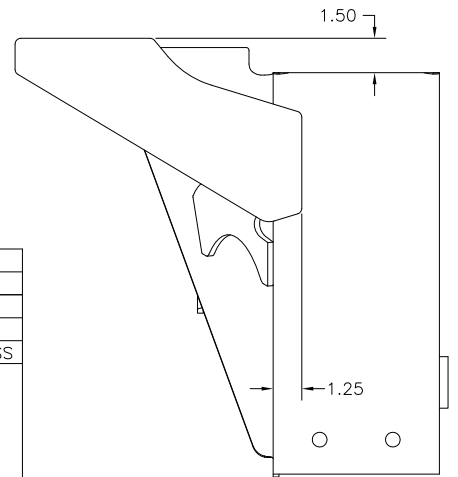
1. LOCATE FRAME BRACKETS ONTO TRAILER FRAME AND LOOSELY INSTALL MOUNTING BOLTS USING HARDENED WASHERS AT ALL SLOTTED HOLE LOCATIONS.
2. INSTALL C-CHANNEL LATERAL BRACE, USING 5/8" MOUNTING HOLES ON FRONT OF FRAME BRACKETS.
3. INSTALL STRUTS, USING 5/8" MOUNTING HOLES IN FRAME BRACKET GUSSET AND C-CHANNEL LATERAL BRACE.
4. TIGHTEN C-CHANNEL LATERAL BRACE MOUNTING BOLTS AND STRUT MOUNTING BOLTS, IF PRESENT.
5. TIGHTEN FRAME BRACKET MOUNTING BOLTS.



| FRAME BRACKET BRACING | | | | | |
|-----------------------|-----------------------|-----------|-----------|-----------|----------------------|
| SUSPENSION CAPACITY-- | AAT 23K, 25K, AND 30K | | | | |
| FRAME ATTACHMENT-- | WELD-ON | | BOLT-ON | | |
| HIGH CONTROL-- | YES* | -OR- NO | NO | NO | YES |
| FRAME BRACKET STYLE-- | WINGED | WINGLESS | WINGED | WINGLESS | WINGED -OR- WINGLESS |
| 13.5 | | | | | |
| 14.0 | | | | | |
| 15.0 | FRAME BRACKET | C-CHANNEL | NONE | C-CHANNEL | C-CHANNEL |
| 16.0 | GUSSET | REQUIRED | | REQUIRED | REQUIRED |
| 17.0 | REQUIRED | | | | |
| 18.0 | | | C-CHANNEL | | |
| 19.0 | | | REQUIRED | | |

* HIGH CONTROL IS NOT AVAILABLE IN 18 AND 19 RIDE HEIGHTS.

IT IS THE RESPONSIBILITY OF THE SUSPENSION INSTALLER TO PROVIDE AN EQUIVALENT FRAME BRACKET SUPPORT IF THE FRAME BRACKET BRACING IS NOT PURCHASED FROM HENDRICKSON.

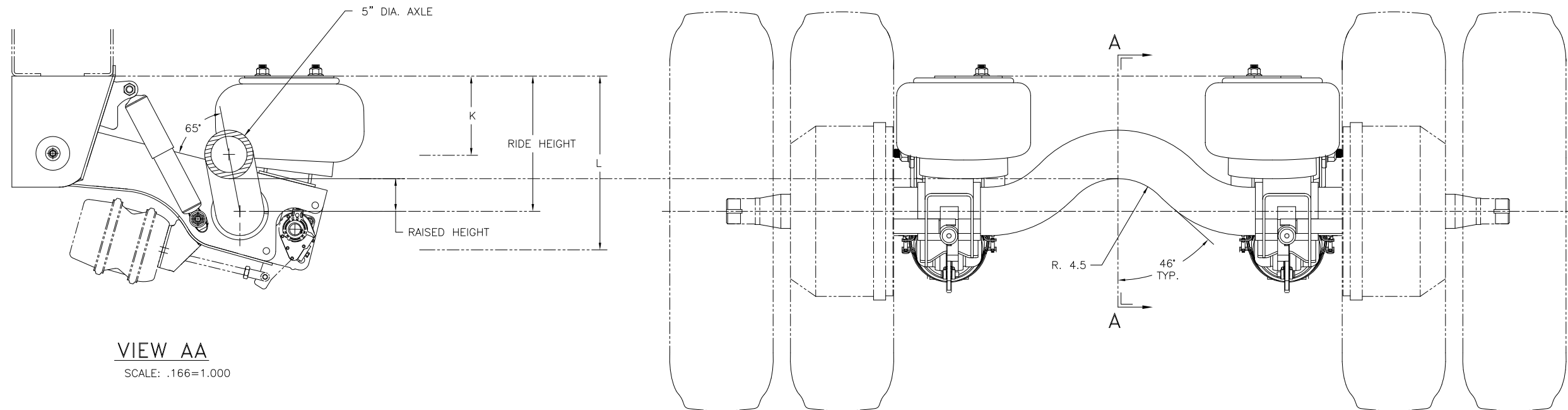


NOTES:

1. THIS PAGE IS FOR AAT 23K AND 25K SUSPENSIONS WITH RAISED CENTER AXLE OPTION.
2. SUSPENSION DIMENSIONS AND TRAVEL: SEE PAGE 2.
3. SEE L-1065 FOR SUSPENSION WEIGHT.

This Print remains the property of Hendrickson. All information contained thereon is confidential. It is loaned, subject to return on demand and on express condition that it is not to be copied or used directly or indirectly for any purpose other than the purpose for which it has been loaned to you.

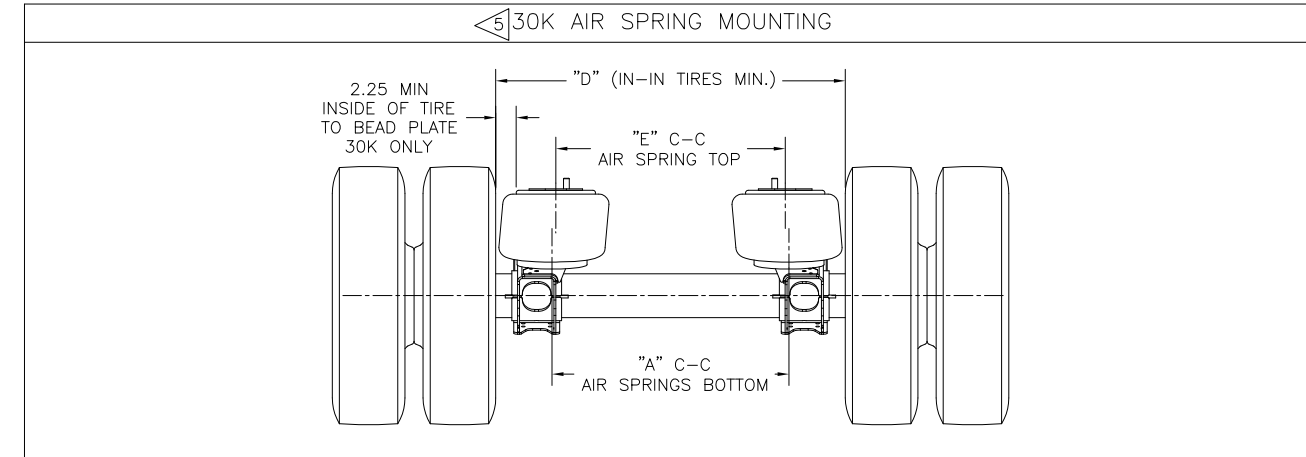
| RIDE HEIGHT | RAISED HEIGHT | | |
|---|----------------|--------------------|---------------------|
| | AT RIDE HEIGHT | AT FULL JOUNCE (K) | AT FULL REBOUND (L) |
| AAT 23K AND 25K RAISED CENTER AXLE DIMENSIONS | | | |
| STANDARD TRAVEL | | | |
| 13.5 | 3.3 | 3.2 | 3.4 |
| 14.0 | 3.3 | 3.2 | 3.4 |
| 15.0 | 3.4 | 3.3 | 3.4 |
| 16.0 | 3.3 | 3.2 | 3.4 |
| 17.0 | 3.4 | 3.3 | 3.4 |
| 18.0 | 3.3 | 3.2 | 3.4 |
| 19.0 | 3.4 | 3.3 | 3.4 |
| LIMITED REBOUND TRAVEL | | | |
| 14.0 | 3.3 | 3.2 | 3.4 |
| 16.0 | 3.3 | 3.2 | 3.4 |
| 18.0 | 3.3 | 3.2 | 3.4 |
| HIGH CONTROL TRAVEL | | | |
| 13.5 | 3.1 | 3.0 | 3.4 |
| 14.0 | 3.2 | 3.0 | 3.4 |
| 15.0 | 3.3 | 3.1 | 3.4 |
| 16.0 | 3.2 | 3.0 | 3.4 |
| 17.0 | 3.3 | 3.1 | 3.4 |



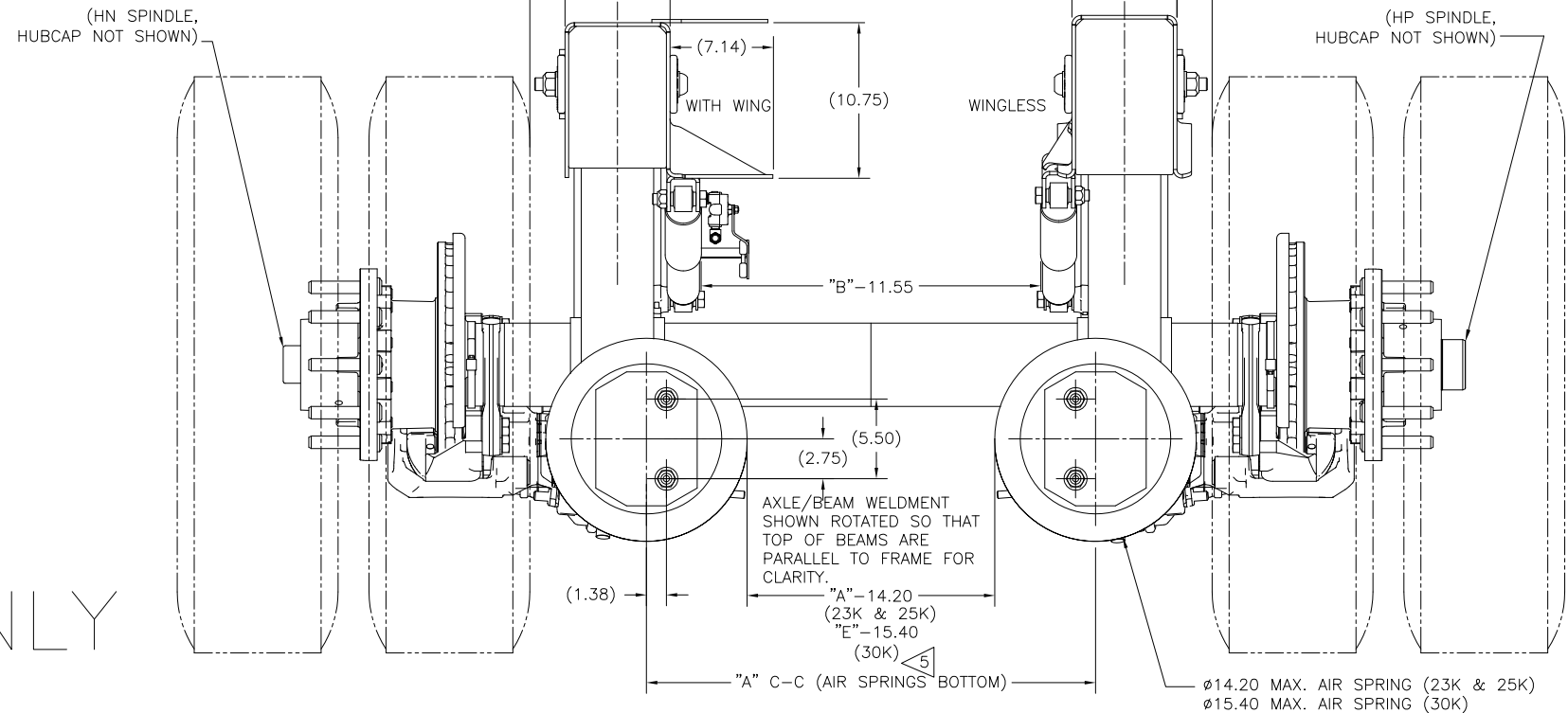
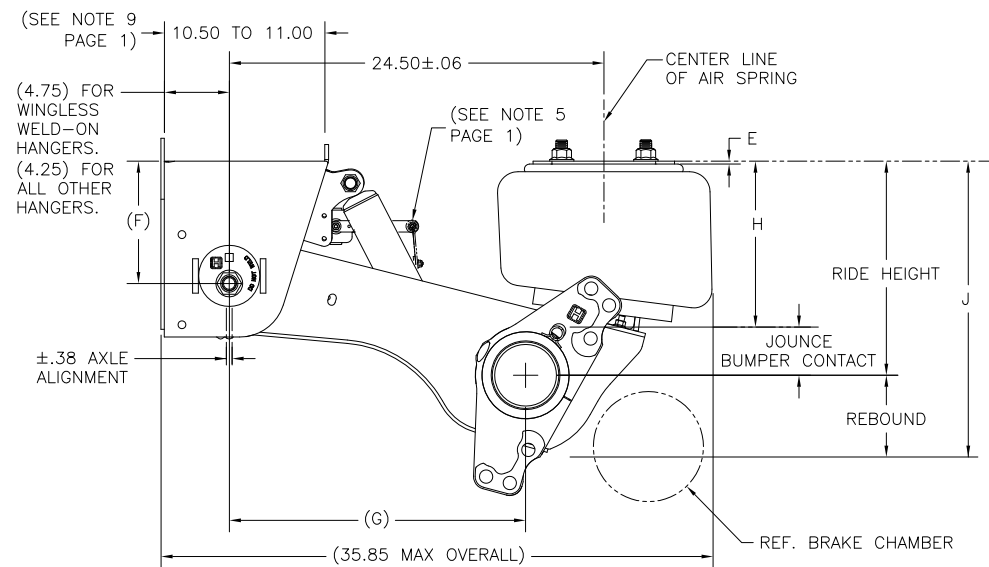
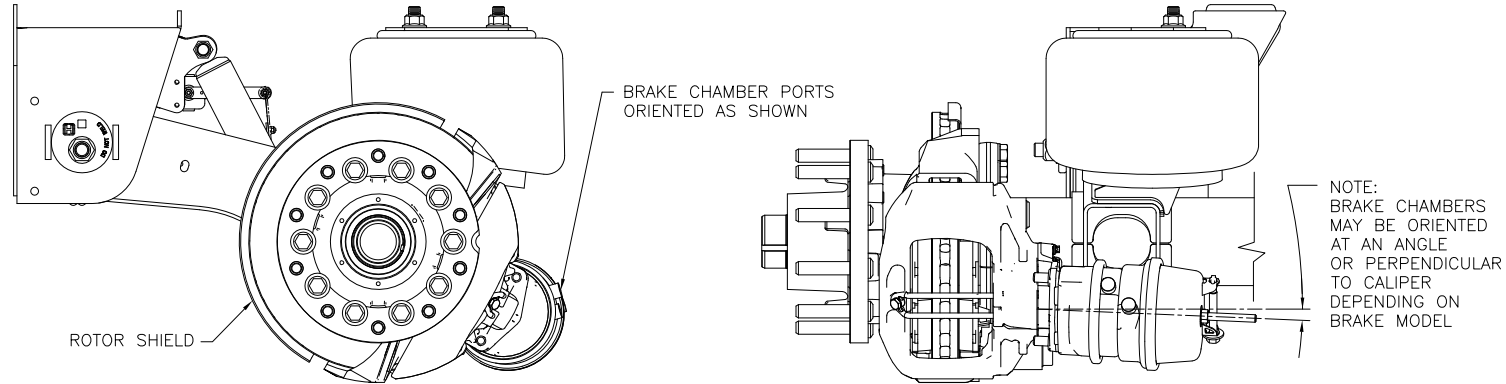
VIEW AA
SCALE: .166=1.000

NOTES:

1. THIS PAGE IS FOR AAT 23K, 25K, AND 30K SUSPENSIONS WITH AIR DISC BRAKES OPTION.
2. MERITOR WABCO PAN22 BRAKE CALIPERS AND GUNITE DUCTILE IRON HUBS WITH GUNITE ROTORS REPRESENTED IN GRAPHICS.
3. NOT ALL HUB/ROTOR OPTIONS ARE AVAILABLE WITH ALL BRAKE OPTIONS.
4. AIR DISC BRAKES COMPATIBLE WITH 22.5" OR 24.5" TIRES ONLY.
5. NOTE SPECIAL AIR SPRING MOUNTING FOR 30K SUSPENSIONS.



REFERENCE VIEWS WITH BRAKE CALIPERS, BRAKE CHAMBERS, HUB/ROTORS, AND ROTOR SHIELDS INSTALLED



AIR DISC BRAKES ONLY

SEE PAGE 1 AND 2 FOR TABULATED DIMENSIONS AND NOTES

This Print remains the property of Hendrickson. All information contained thereon is confidential. It is loaned, subject to return on demand and on express condition that it is not to be copied or used directly or indirectly for any purpose other than the purpose for which it has been loaned to you.