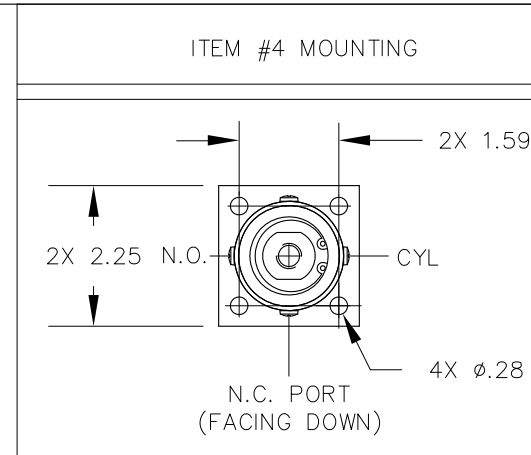


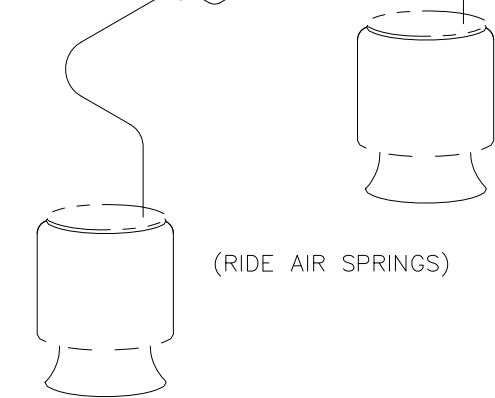
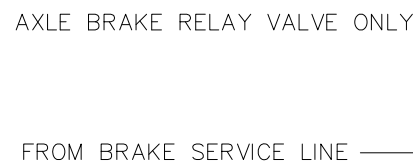
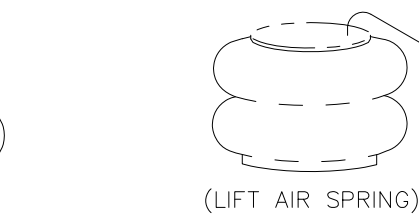
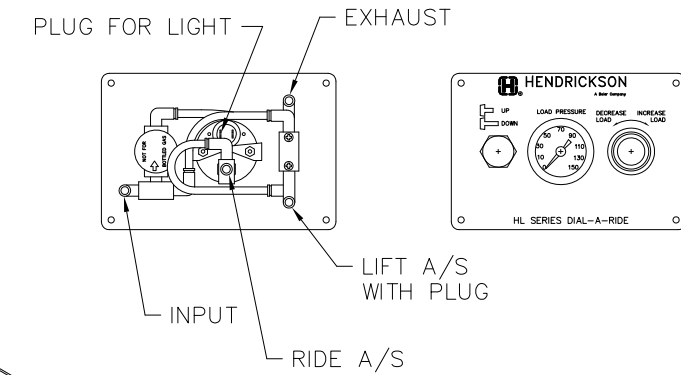
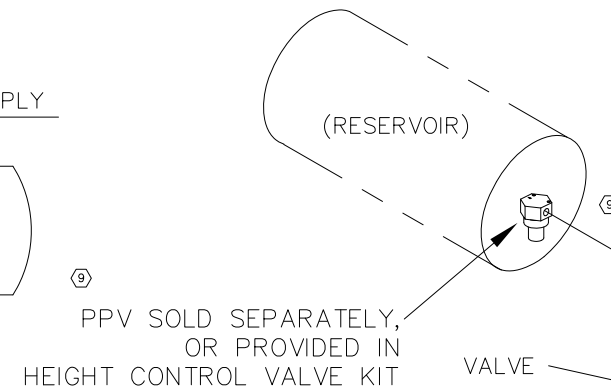
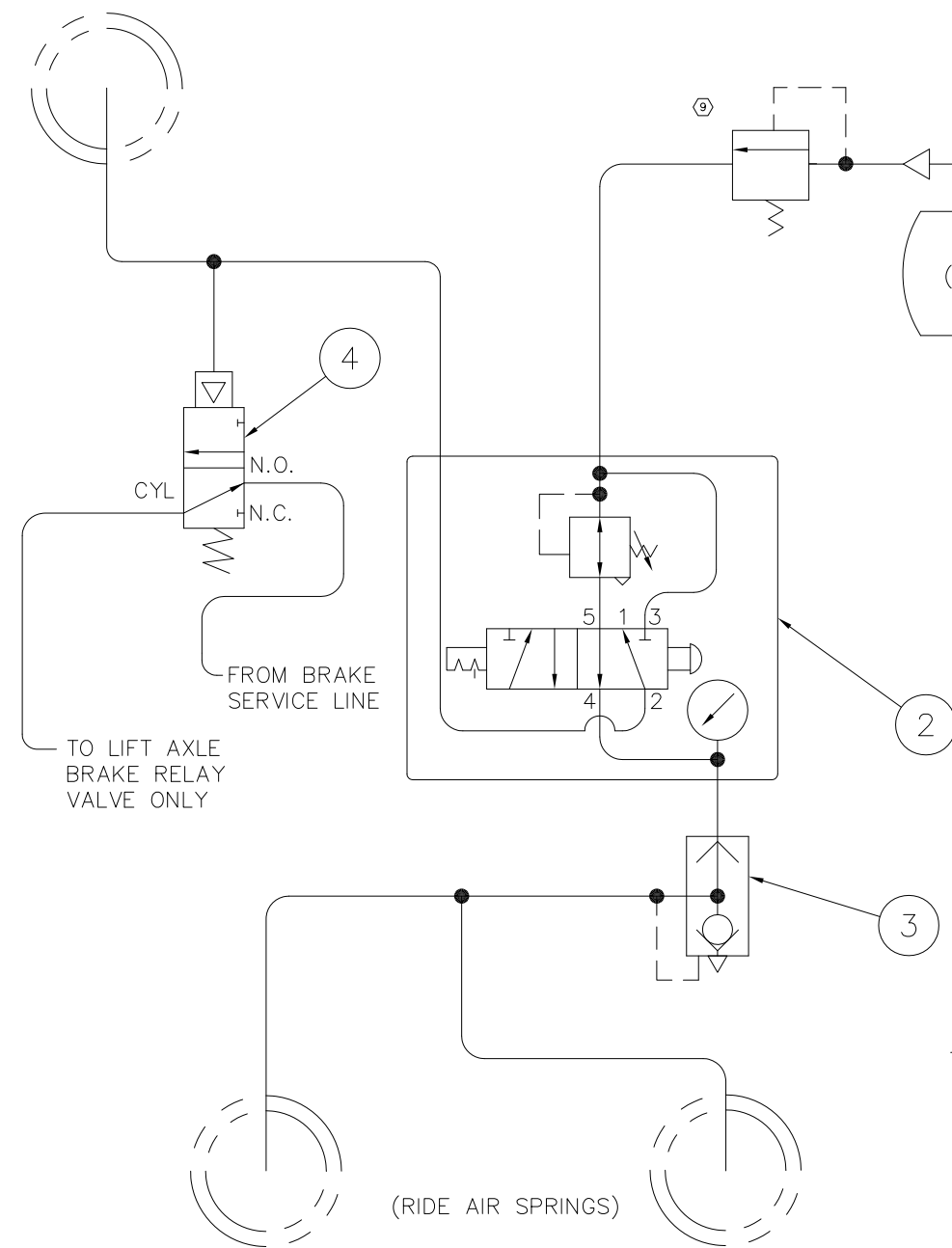
This Print remains the property of Hendrickson. All information contained thereon is confidential. It is loaned, subject to return on demand and on express condition that it is not to be copied or used directly or indirectly for any purpose other than the purpose for which it has been loaned to you.



| ITEM | PART NO. | DESCRIPTION | QTY. |
|------|-------------|-------------------------------|------|
| 2 | A-14568 | DIAL-A-RIDE PACKAGE | 1 |
| 3 | A-1129 | QUICK RELEASE VALVE | 1 |
| 4 | A-23588 | AIR PILOTED VALVE (3 WAY) | 1 |
| *5 | A-20417 | ADAPTOR KIT $\phi.25/\phi.38$ | 1 |
| *6 | DWG C-14152 | AK-146 AIR KIT DRAWING | 1 |
| *7 | A-27360 | BARBED TUBE FITTING | 1 |
| *8 | A-27361 | 3/8" ID TUBE | 1 |

* NOT SHOWN

(LIFT AIR SPRING)



NOTES:

- DO NOT ADD LUBRICATION TO AIR SYSTEM
- ALL CONNECTIONS MUST BE LEAK PROOF
- AVOID BENDS IN AIR LINES
- POLYIMIDE TUBING AND FITTINGS TO BE FURNISHED BY CUSTOMER
- APPLICATION - ALL AIR LIFT SUSPENSIONS
- A MIN. OF 35 PSI REQUIRED TO OPERATE SUSPENSION IN DOWN POSITION
- WEIGHT: 2.64 LB.



TRAILER COMMERCIAL VEHICLE SYSTEMS
2070 INDUSTRIAL PLACE S.E., CANTON, OH 44707-2600 U.S.A.

| | | | | | | | | | |
|--|----------------------|------|---------|-----|----------|----------|------------|------|---------|
| UNLESS OTHERWISE NOTED: TOLERANCES ARE: | | 9 | 23037 | DPB | 4-16-14 | DRAWN BY | J. BURGESS | DATE | 1-11-93 |
| .X: ± .1 | DIMENSIONS ARE: | 8 | 19050 | PSO | 8-11-10 | CHK'D BY | | | |
| .XX: ± .06 | INCHES | 7 | 11939 | CDR | 12-10-02 | APP'D BY | J. SUKOSD | | |
| .XXX: ± .030 | | 6 | 7731 | EEM | 10-23-98 | | R. FRANKS | | |
| ANGULAR: ± 0.5° | 3RD ANGLE PROJECTION | | | | | | | | |
| DIMENSIONS ADHERE TO ANSI Y14.5M-1982 | | REV. | ECN NO. | BY | DATE | | | | |

AIR CONTROL KIT AK-146

SCALE 1.00=1.00
(SIZE) PAGE 1 OF 1
DRAWING No.

C-14152