

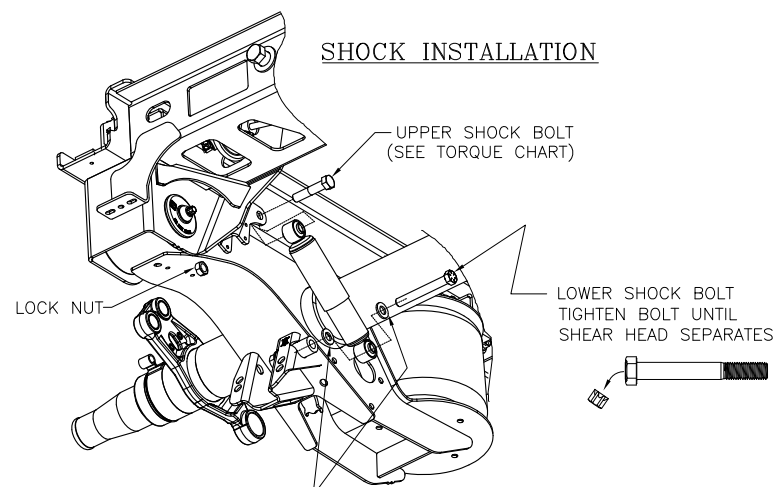
ITEMS ORDERED SEPARATELY, SHIPPED LOOSE

1. **SPRAY GUARD MOUNTING ANGLE KIT:**
P/N S-22428-2 (37" & 38" I-BEAM CENTERS)
P/N S-22428-8 (43" & 44" I-BEAM CENTERS)
2. **AIR TANK MOUNTING BRACKET KITS: (SEE PAGE 2)**
P/N S-27742-1 FOR 1488 CU. IN. OR 2800 CU. IN. TANK, (37" & 38" I-BEAM CENTERS)
P/N S-27742-2 FOR 1488 CU. IN. OR 2800 CU. IN. TANK, (43" & 44" I-BEAM CENTERS)
3. **STINGER:**
S-27028-1 23.75 INCH (SHOWN PAGE 2)
4. **SLIDER LOCATING BAR:**
LOCATING BAR NOT AVAILABLE FROM HENDRICKSON

NOTE:
THE INSTALLATION OF THE SINGLE AXLE AAZL SLIDER DOES NOT CONTRIBUTE TO RESISTING LATERAL BENDING OR PARALLELOGRAMING OF THE TRAILER FRAME. A WIDESPREAD SUSPENSION CAN INDUCE THESE FORCES. THIS ACTION NEEDS TO BE CONSIDERED IN THE DESIGN OF THE TRAILER AND/OR INSTALLATION OF THE ADJACENT SUSPENSION. HENDRICKSON ENGINEERING IS AVAILABLE FOR ASSISTANCE UPON REQUEST.

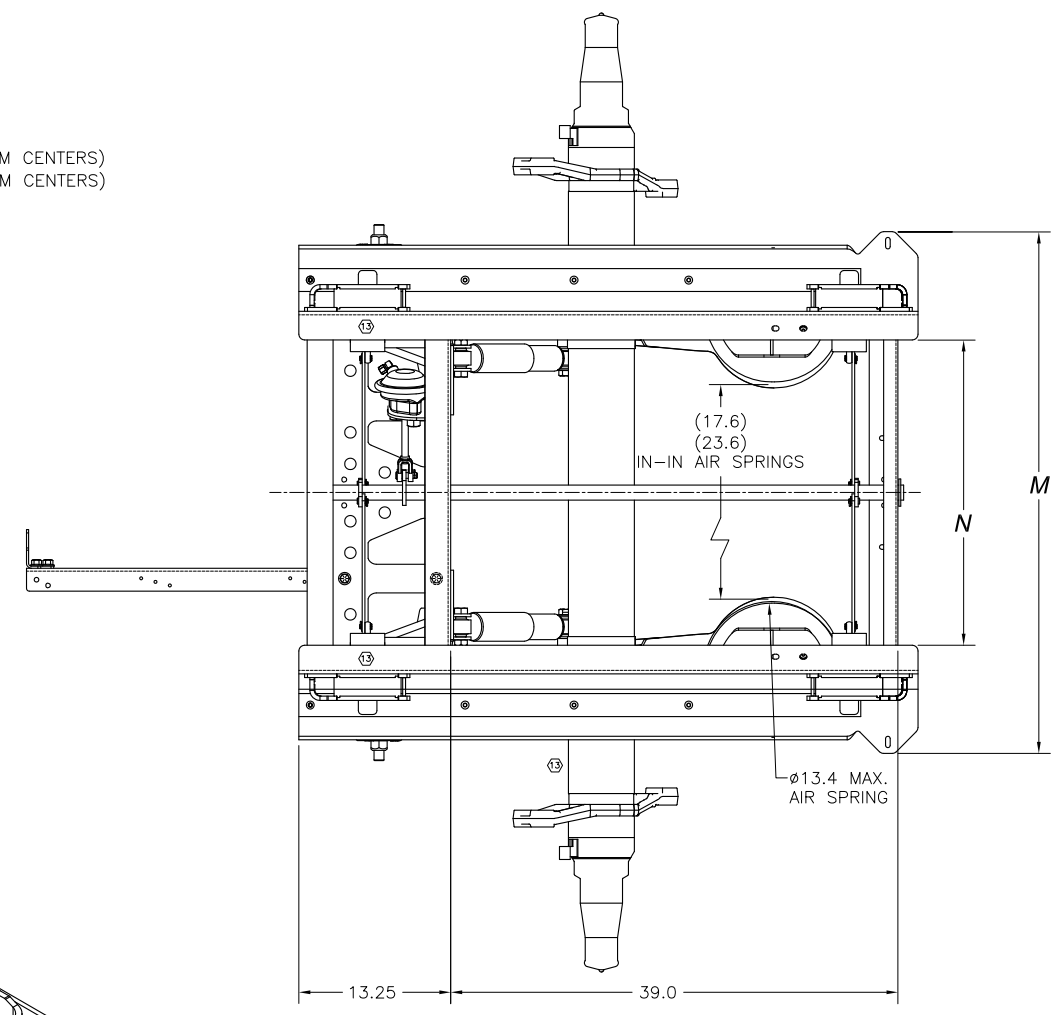
- NOTES:**
1. SEE L-341 INTRAAX® INSTALLATION INSTRUCTIONS FOR INFORMATION ON ASSEMBLY, WELDING PROCEDURE, AND ALIGNMENT.
 2. SEE SERVICE MANUAL FOR INFORMATION CONCERNING MAINTENANCE PROCEDURE.
 3. SEE L-1182 FOR HEIGHT CONTROL KIT OPTIONS.
 4. DO NOT WELD ON AXLE TUBE.
 5. DO NOT WELD ON SLIDER BOX .
 6. MANUFACTURED UNDER ONE OR MORE OF THE FOLLOWING PATENTS:
OTHER PATENTS PENDING U.S. PATENT NOS. - 5,366,237 - 4,166,640
- DO NOT ROUTE ITEMS THROUGH THIS AREA FOR 9.0 INCH AND LOWER RIDE HEIGHTS DUE TO MINIMAL BEAM TO FRAME CLEARANCE.
- SEE AKSS0001 FOR HENDRICKSON RECOMMENDED PLUMBING PROCEDURE.

- CLEARANCE SPECIFICATIONS:**
- a) 1.0 INCH MINIMUM CLEARANCE REQUIRED BETWEEN TOP OF TIRE AND BOTTOM OF TRAILER STRUCTURE WHEN AXLE IS AT FULL JOUNCE.
 - b) 2.0 INCHES MINIMUM CLEARANCE REQUIRED BETWEEN INSIDE OF TIRE AND TRAILER STRUCTURE FOR TIRE AND LATERAL MOVEMENT.
 - c) .75 INCH MINIMUM CLEARANCE MUST BE MAINTAINED AROUND AIR SPRING WHEN IT IS AT MAXIMUM DIAMETER.

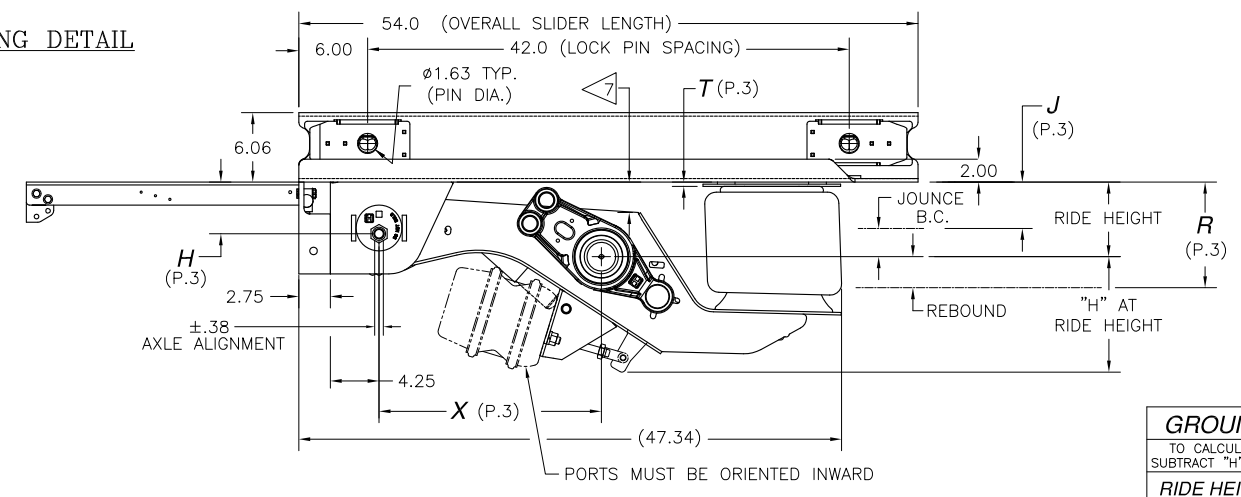
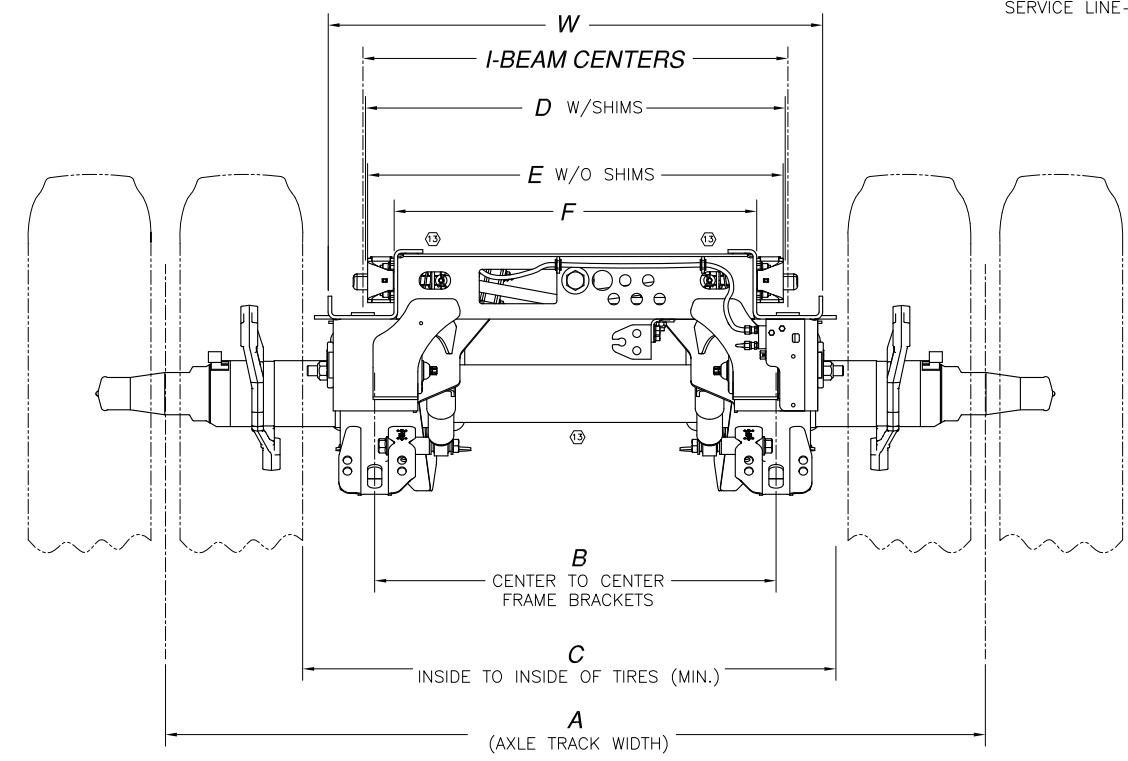
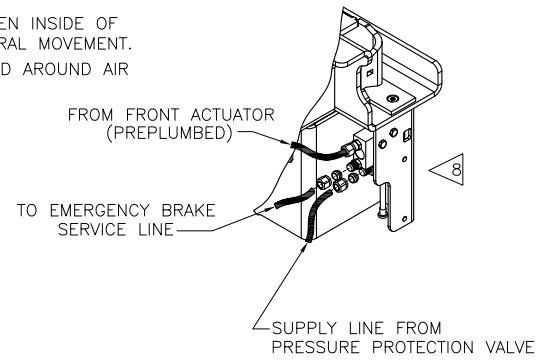


IMPORTANT !
BOLT KIT INCLUDES TWO HARDENED WASHERS PER SHOCK WHICH MUST BE POSITIONED AS SHOWN. THESE WASHERS ARE NON-STANDARD WASHERS WITH TIGHTER TOLERANCED HOLES, DO NOT SUBSTITUTE STANDARD WASHERS FOR THESE PARTS.

TORQUE SPECIFICATIONS		
DESCRIPTION	SIZE	TORQUE (FT-LB)
SHOCK BOLT, UPPER	3/4-10	210-235
SHOCK BOLT, LOWER	3/4-10	210-235
AIR SPRING NUTS, UPPER	3/4-16	80-100
AIR SPRING NUT, LOWER	1/2-13	55-60
S-CAM BEARING BOLTS	3/8-16	35-45
BRAKE CHAMBER MTG. NUTS	5/8-11	100-110
AIR ACTUATOR VALVE MTG. BOLTS	1/4-20	75-100 IN-LB
SPRAY GUARD BRACKET BOLTS	3/8-16	35-45
LOCK PIN BOX BOLTS	5/8-11	200-220
AIR ASSIST CHAMBER MTG. BOLTS	7/16-14	32-38
ACTUATOR AIR LINE FITTINGS	-----	25 MAX.
STINGER MTG. BOLTS	1/2-13	70-80
STINGER AIR LINE BRACKET	3/8-16	35-45
AIR TANK BRACKET BOLTS	3/8-16	35-45
AIR ASSIST CHAMBER JAM NUT	1/2-13	20-30



I-BEAM CENTERS	SLIDER/ SUSPENSION WIDTH DIMENSIONS (INCHES)								
	A	B	C	D	E	F	M	N	W
37"	71.5	35.0	46.50	36.61	36.25	31.63	45.50	26.63	43.13
38"	71.5	35.0	46.50	37.61	37.25	32.63	46.50	27.63	44.13
43"	77.5	41.0	52.50	42.61	42.25	37.63	51.50	32.63	49.13
44"	77.5	41.0	52.50	43.61	43.25	38.63	52.50	33.63	50.13

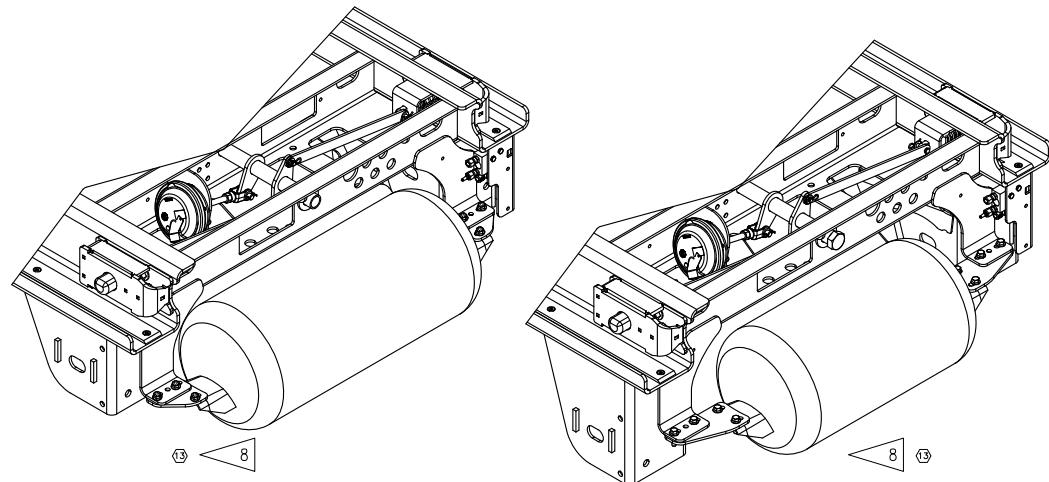


GROUND CLEARANCE	
TO CALCULATE GROUND CLEARANCE, SUBTRACT "H" FROM LOADED TIRE RADIUS.	
RIDE HEIGHT	"J"
6.5	9.75
7.5	9.83
8.0	9.88
9.0	10.04
12.0	9.95

This Print remains the property of Hendrickson. All information contained hereon is confidential. It is loaned, subject to return on demand and on express condition that it is not to be copied or used directly or indirectly for any purpose other than the purpose for which it has been loaned to you.

37" & 38" SLIDER

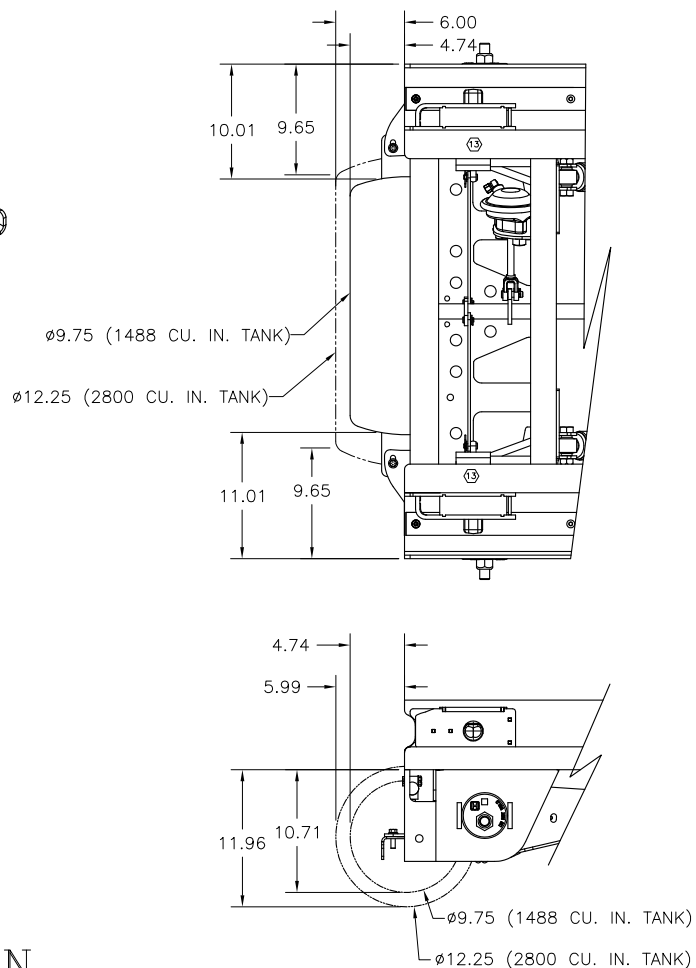
43" & 44" SLIDER



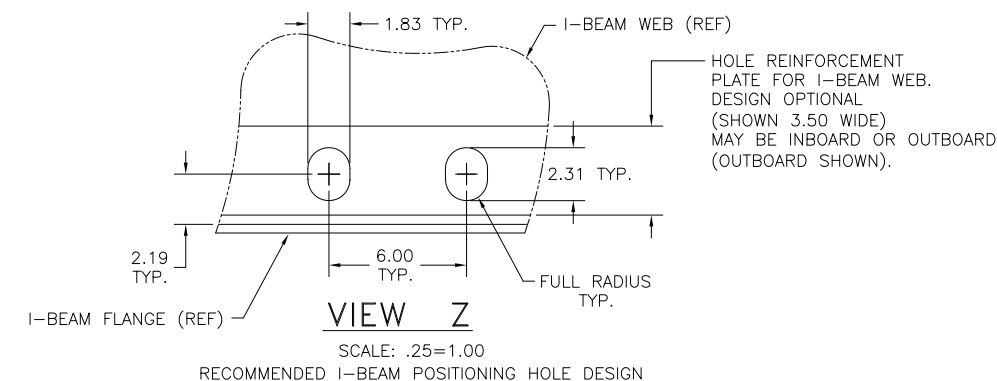
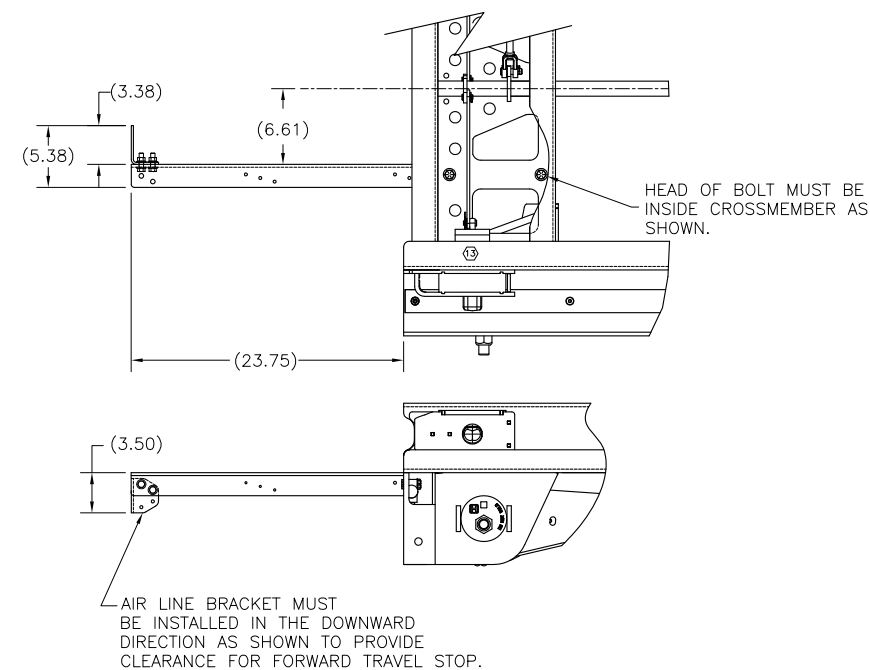
- NOTE:
- FOR TRAILER WIDTHS OF 37" OR 38" USE TANK BRACKET KIT S-27742-1. (NOTE SHORT BRACKET)
FOR TRAILER WIDTHS OF 43" OR 44" USE TANK BRACKET KIT S-27742-2. (NOTE LONG BRACKET)
(BOTH -1 AND -2 KITS WILL WORK FOR EITHER 1488 CU. IN. OR 2800 CU. IN. TANKS)
 - KITS ARE DESIGNED FOR 27.50" MTG. CENTERS FOR A 1488 CU. IN. TANK AND 29.50" MTG. CENTERS FOR A 2800 CU. IN. TANK.
 - THE 1488 CU. IN. TANK IS SHOWN ABOVE WITH RESPECT TO TRAILER WIDTHS. OTHER HOLES PROVIDED IN THE BRACKETS WILL ACCOMMODATE THE USE OF A 2800 CU. IN. TANK BUT GRAPHICALLY WILL LOOK DIFFERENT THAN ABOVE.
 - WITH TANK MOUNTED TO THE FRONT OF THE SLIDER BOX, A MINIMUM OF 52" AXLE SPACING IS REQUIRED WHEN BUTTED UP AGAINST THE REAR OF A STATIONARY (HENDRICKSON AAL) SUSPENSION.

This Print remains the property of Hendrickson. All information contained thereon is confidential. It is loaned, subject to return on demand and on express condition that it is not to be copied or used directly or indirectly for any purpose other than the purpose for which it has been loaned to you.

AIR TANK INSTALLATION



STINGER INSTALLATION

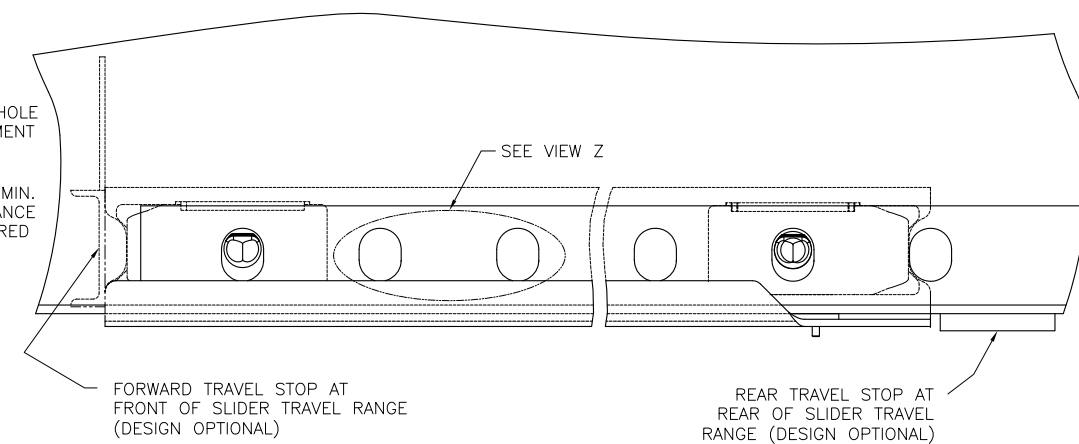
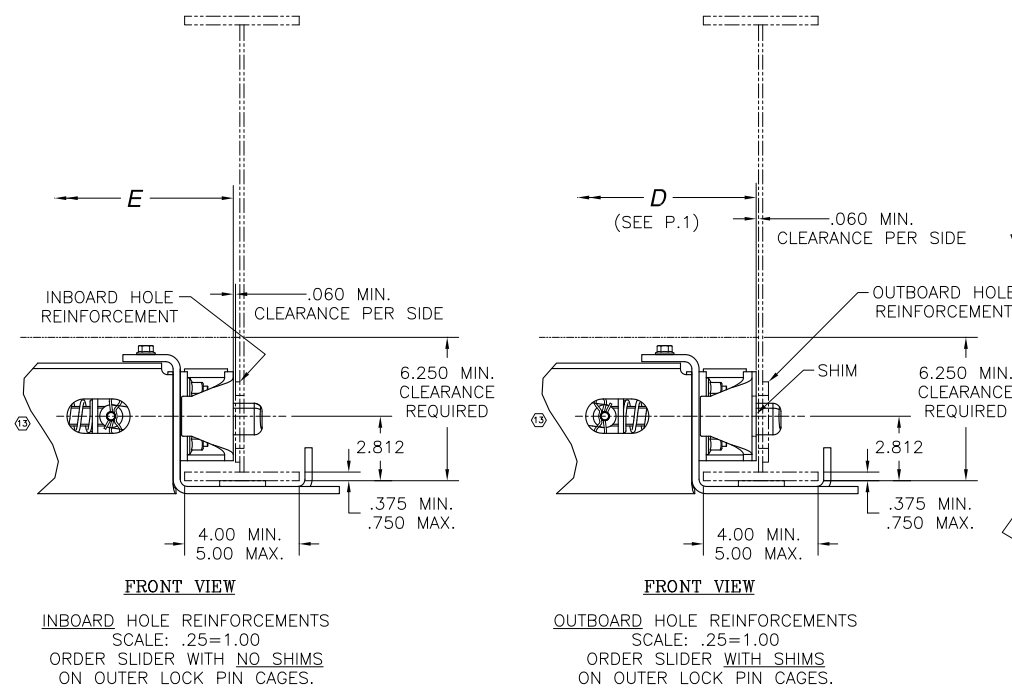
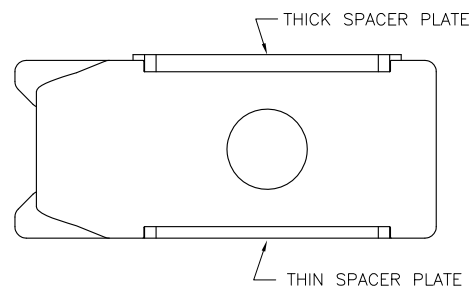


TRAILER FRAME REQUIREMENTS

- NOTE: HORIZONTAL DIMENSIONS MUST BE MAINTAINED AS SHOWN. VERTICAL DIMENSIONS SHOWN ARE OPTIONAL, BUT ARE RECOMMENDED FOR THE FOLLOWING REASONS:
- ALLOWS HOLE POSITION ON WEB TO BE IDENTICAL FOR ANY FLANGE THICKNESS FROM 3/8" TO 3/4".
 - ALLOWS DIRECT CONTACT BETWEEN I-BEAM FLANGE AND BOTTOM SIDE OF OUTER LOCK PIN CAGES WHEN TRAILER IS LIFTED BY FRAME.

PIN CAGE PLACEMENT

- NOTE:
- PIN CAGES HAVE A THICK SPACER PLATE AND A THIN SPACER PLATE:
THE THICK SPACER PLATE MUST BE DOWN WHEN BOTTOM FLANGE OF TRAILER I-BEAM IS .500 THK. OR LESS.
THE THIN SPACER PLATE MUST BE DOWN WHEN BOTTOM FLANGE OF TRAILER I-BEAM IS GREATER THAN .500 THK. BUT DOES NOT EXCEED .750 THK.
 - IF NEEDED AND PIN CAGES NEED FLIPPED.
WHEN GOING FROM ONE THICKNESS TO THE OTHER, THE FRONT PIN CAGE IS FLIP AND MOVED TO THE REAR PIN CAGE LOCATION.
THE REAR PIN CAGE IS FLIPPED AND MOVED TO THE FRONT PIN CAGE LOCATION.



DIMENSION FROM PAGE 1

RIDE HEIGHT	JOUNCE	REBOUND	BUMPER CONTACT	DIMENSION FROM PAGE 1					** SUSPENSION WEIGHT (LB)
				T	H	X	J	R	
6.5	2.3	4.5	1.9	.38	4.5	19.4	4.2	11.0	266.50 (13)
7.5	3.3	3.5	2.9	.38	4.5	19.3	4.2	11.0	266.50 (13)
8.0	3.8	5.2	3.4	.38	4.5	19.2	4.2	13.2	266.50 (13)
9.0	4.8	4.2	4.4	.38	4.5	19.0	4.2	13.2	266.50 (13)
12.0	5.2	4.8	4.9	.38	8.0	19.1	6.8	16.8	271.50 (13)

* BOX WEIGHT INCLUDES: SLIDER BOX WELDMENT WITH FRAME BRACKETS, LOCK PINS AND ALL PIN PULL COMPONENTS (INCLUDING ACTUATOR VALVE, FITTINGS, ETC.) AND NO SHIMS (FOR TRAILERS WITH INTERNAL WEB REINFORCEMENT AT LOCK PIN HOLES).

** SUSPENSION WEIGHT INCLUDES: BEAMS, BUSHINGS, AXLE WRAPS, PIVOT CONNECTION COMPONENTS, AIR SPRING COMPONENTS AND SHOCK ABSORBER COMPONENTS. WEIGHT IS TOTAL FOR ONE SUSPENSION.

*** AXLE WEIGHT INCLUDES: AXLE TUBE, SPINDLES, SPIDERS, STANDARD 16.5" X 7" BRAKE COMPONENTS, AND AXLE NUT KIT (BRAKE CHAMBERS AND SLACK ADJUSTERS NOT INCLUDED). WEIGHT IS TOTAL FOR ONE AXLE.

**** OPTION WEIGHT TABLE IS NOT ALL-INCLUSIVE; MANY ADDITIONAL OPTIONS ARE AVAILABLE. CONTACT HENDRICKSON ENGINEERING FOR WEIGHTS OF OPTIONS NOT LISTED IN CHART.

*** AXLE WEIGHT (LB)			
AXLE WALL	STANDARD		
I-BEAM CENTERS	37" & 38"	43" & 44"	
SPINDLE	HN	249.76	259.04
TYPE	HP	257.49	266.81

* SLIDER BOX WEIGHT (LB)				
RIDE HEIGHT	I-BEAM CENTERS			
	37"	38"	43"	44"
6.5	344.44	346.62	357.64	359.83
7.5				
8.0				
9.0	357.62	359.80	370.82	373.01
12.0				

**** OPTION WEIGHT ADDITION (LB)		
OPTIONAL COMPONENT	I-BEAM CENTERS	
	37" & 38"	43" & 44"
SHIMS ON BOX (FOR EXTERNAL WEB HOLE REINFORCEMENT)	5.72	
16.5" X 7" HXS BRAKES	4.04	
16.5" X 8.625" HXS BRAKES	15.60	
EXTENDED SERVICE/HIGH-DAMPING SHOCKS	2.00	
LOW - PRESSURE AIR SPRINGS	1.20	
SEALED CLAMP-ON DUST SHIELDS	14.74	
SHOCK STRAPS	.84	
HALDEX BRAKE CHAMBERS (STD. STROKE)	39.98	
HALDEX BRAKE CHAMBERS (LONG STROKE)	43.36	
HALDEX BRAKE CHAMBERS (LONG STROKE, EXTENDED WARRANTY)	43.62	
HALDEX SLACK ADJUSTERS (5.5"OR 6.0" LG.)	14.04	
AKH-235-3 HCV KIT (BOLTED LINK)	2.86	
STINGER KIT (23.75" LG)	10.02	
MUD FLAP MTG. ANGLE KIT	23.80	25.30
AIR TANK BRACKET KIT (2800 C.I. TANK)	2.26	3.24
AIR TANK BRACKET KIT (1488 C.I. TANK)		

NOTES:

1. TO OBTAIN TOTAL SYSTEM WEIGHT, ADD ONE ITEM EACH FROM SLIDER BOX, SUSPENSION & AXLE WEIGHT TABLES, PLUS ALL APPLICABLE OPTION WEIGHTS FROM OPTION WEIGHT TABLE.
2. CONTACT HENDRICKSON FOR ALLOWABLE RIDE HEIGHT RANGES.

3 JOUNCE AND REBOUND DIMENSIONS CHANGE AS THE RIDE HEIGHT CHANGES FROM THE NOMINAL POSITION.

4 DIMENSIONS "J" & "R" WILL REMAIN CONSTANT REGARDLESS OF RIDE HEIGHT VARIATION FROM NOMINAL POSITION.

This Print remains the property of Hendrickson. All information contained thereon is confidential. It is loaned, subject to return on demand and on express condition that it is not to be copied or used directly or indirectly for any purpose other than the purpose for which it has been loaned to you.