

H PARTS LIST

HT300U UNDERSLUNG

LIT NO: L940

DATE: June 2008

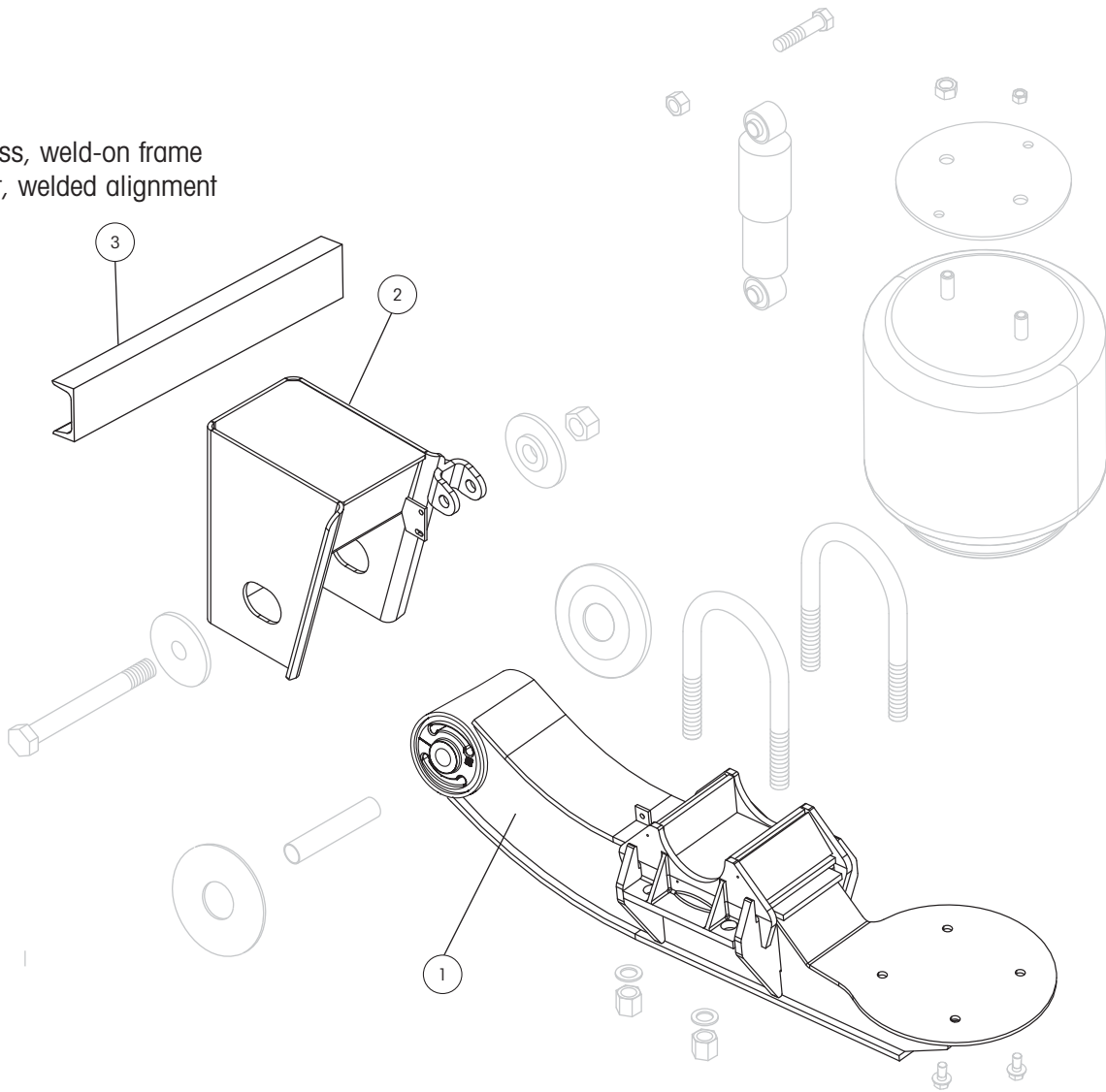
REVISION: A





Picture shown may not resemble all models.

Wingless, weld-on frame
bracket, welded alignment





HT300U UNDERSLUNG PARTS LIST

ITEM	DESCRIPTION	PART NO.	QTY. PER SUSP.	FITS MODELS HT300 ? OR N-HT300 ?		
1	BEAM ASSEMBLY^{1,2}					
	Roadside	C-20252-1	1	All models		
	Curbside	C-20252-2	1	All models		
2	FRAME BRACKET					
	2a Wingless, Weld-on, Welded Alignment					
	Roadside	S-20268-1	1	U-7.5-001	U-7.5-501	U-7.5-519
	Curbside	S-20268-2	1	U-9-001	U-9-005	U-9-011
				U-9-020	U-9-024	U-9-501
				U-9-519	U-9-701	
	Roadside	S-20269-1	1	U-12-001	U-12-005	U-12-011
	Curbside	S-20269-2	1	U-12-015	U-12-024	
	Roadside	S-20270-1	1	U-14-001	U-14-005	U-14-011
	Curbside	S-20270-2	1	U-14-015	U-14-022	U-14-023
				U-14-701		
	Roadside	S-20271-1	1	U-17-001	U-17-011	U-17-024
	Curbside	S-20271-2	1			
	Roadside	S-22777-1	1	U-14-020		
	Curbside	S-22777-2	1			
	Roadside	S-22779-1	1	U-9-021		
	Curbside	S-22779-2	1			
	Roadside	S-22511-1	1	U-15-011		
	Curbside	S-22511-2	1			
	Roadside	S-20914-1	1	U-17-020		
	Curbside	S-20914-2	1			
	Roadside	S-21367-1	1	U-17-021		
	Curbside	S-21367-2	1			
	Roadside	S-21380-1	1	U-14-021		
	Curbside	S-21380-2	1			
	Roadside	S-22778-1	1	U-12-020		
	Curbside	S-22778-2	1			
	Roadside	S-23408-1	1	U-9-022		
	Curbside	S-23408-2	1			
	2b Wingless, Weld-on, QUIK-ALIGN® (Not Shown)					
	Roadside	S-24183-1	1	UB9-022		
	Curbside	S-24183-2	1			
	Roadside	S-29354-1	1	UB14-022		
	Curbside	S-29354-2	1			
3	FRAME BRACKET C-CHANNEL	A-1631-19	1	All models		
4	FRAME BRACKET BRACE (Not Shown)	B-2347-6	2	U-14-001	U-14-005	U-14-011
				U-14-015	U-14-021	U-14-023
				U-14-701	U-15-011	U-17-001
				U-17-011	U-17-021	U-17-024
				UB14-022		

¹ QUIK-ALIGN is available on certain spec's. Contact Hendrickson for assistance.

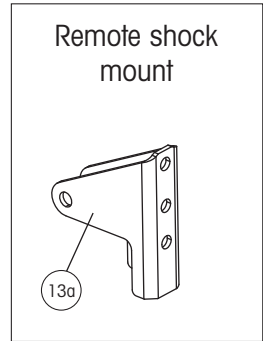
² Lower shock clevis (item # 15) is included with beam assembly.

NOTE: Identification tag can be found on the front of the roadside frame bracket or the inside of the curbside beam.

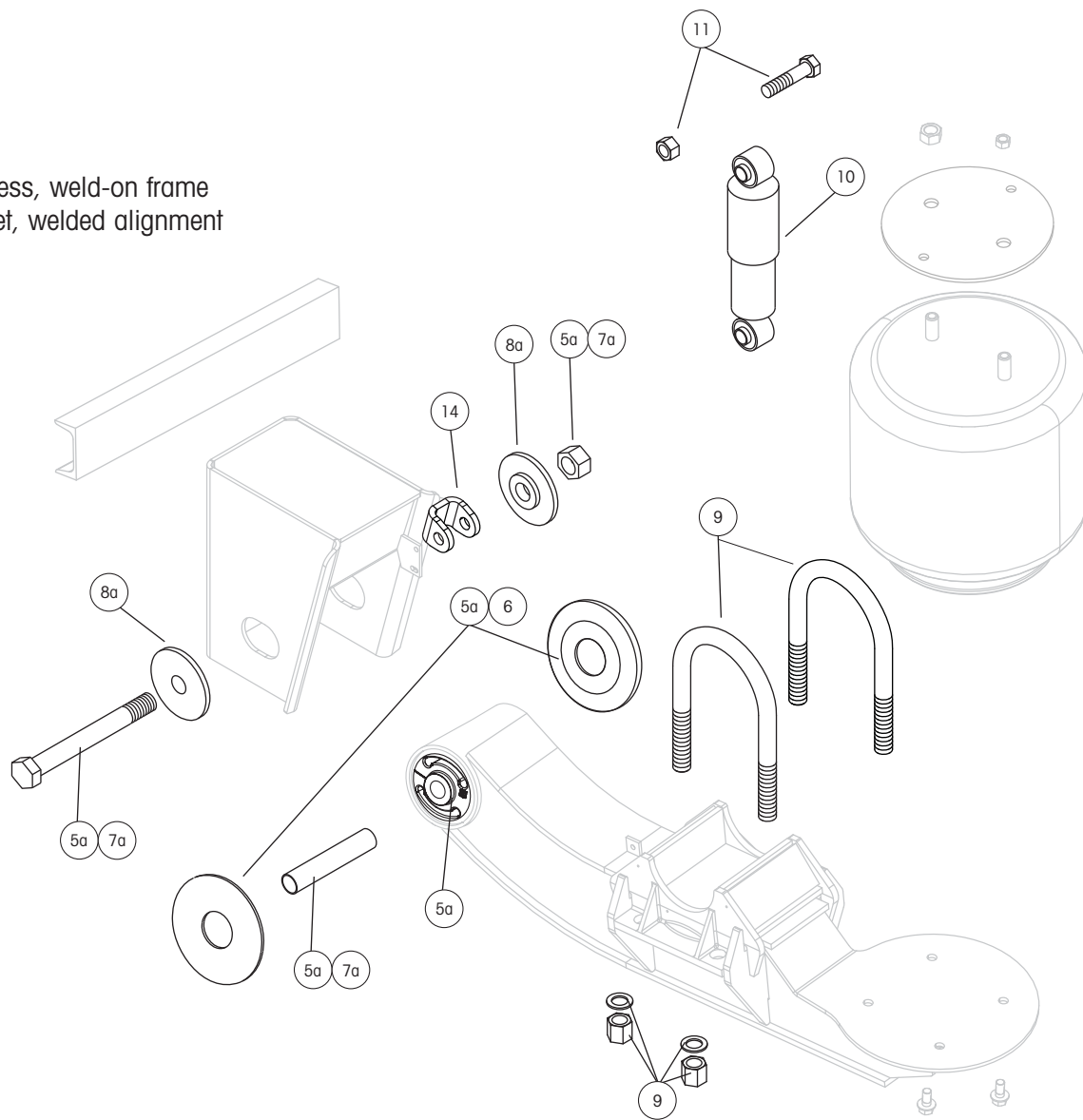
HT300U UNDERSLUNG PARTS LIST



Picture shown may not resemble all models.



Wingless, weld-on frame bracket, welded alignment





HT300U UNDERSLUNG PARTS LIST

ITEM	DESCRIPTION	PART NO.	QTY. PER SUSP.	FITS MODELS HT300 ? OR N-HT300 ?		
5	TRI-FUNCTIONAL® II BUSHING KIT³					
	5a Welded Alignment	S-6914	2	Includes bushing, bushing tube spacers, cap screw, prevailing torque hex nut, liner and lube		
	5b QUIK-ALIGN® (Not Shown)	S-24691	2	Includes bushing, bushing tube spacers, round head bolt, prevailing torque hex nut, hardened washers and lube		
6	BUSHING TUBE SPACER	S-21099	4	All models		
7	PIVOT BOLT KIT					
	7a Welded Alignment	S-3646	2	Includes cap screw, prevailing torque hex nut and liner		
	7b QUIK-ALIGN (Not Shown)	S-24679	2	Includes round head bolt, hardened washers and prevailing torque hex nut		
8	ALIGNMENT COLLARS					
	8a Welded Alignment	S-2770	4	Collars are welded to frame bracket		
	8b Eccentric, QUIK-ALIGN (outer) (Not Shown)	S-20925	2	Alignment hole is off center		
	8c Concentric, QUIK-ALIGN (inner) (Not Shown)	S-20924	2	Alignment hole is centered		
9	U-BOLT KIT	S-3650/4	4	Includes (1) round U-bolt and hardware		
10	SHOCK ABSORBER	S-20126	2	U-7.5-001	U-7.5-501	U-9-001
				U-9-005	U-9-020	U-9-021
				U-9-022	U-9-024	U-9-501
				U-9-701	U-12-001	U-12-005
				U-12-020	U-12-024	U-14-001
				U-14-005	U-14-020	U-14-021
				U-14-022	U-14-023	U-14-701
				U-15-011	U-17-001	U-17-020
				U-17-021	U-17-024	UB9-022
				UB14-022		
		S-21699	2	U-7.5-519	U-9-011	U-9-519
				U-12-011	U-12-015	U-14-011
				U-14-015	U-17-011	
11	SHOCK BOLT KIT	S-2157/2	2	All models		
12	SHOCK STRAP KIT (Not Shown)			Includes (4) nylon ties and (2) shock straps.		
		S-14587-8	1	Use with S-20126 shock		
		S-14587-8	1	Use with S-21699 Shock		
13	REMOTE SHOCK MOUNT					
	13a Upper Assembly					
	Roadside	C-21797-1	1	U-17-020		
	Curbside	C-21797-2	1			
		A-5431	1	U-9-021	U-12-020	U-14-020
	13b Lower Assembly (Not Shown)	S-2723	1	U-9-021	U-12-020	U-14-020
14	UPPER SHOCK CLEVIS	S-2592				
15	LOWER SHOCK CLEVIS⁴ (Not Shown)	S-2592				

³ Bushing tool S-21307 is required to correctly re-bush the suspension.

⁴ Lower shock clevis is included with beam assembly (item # 1).

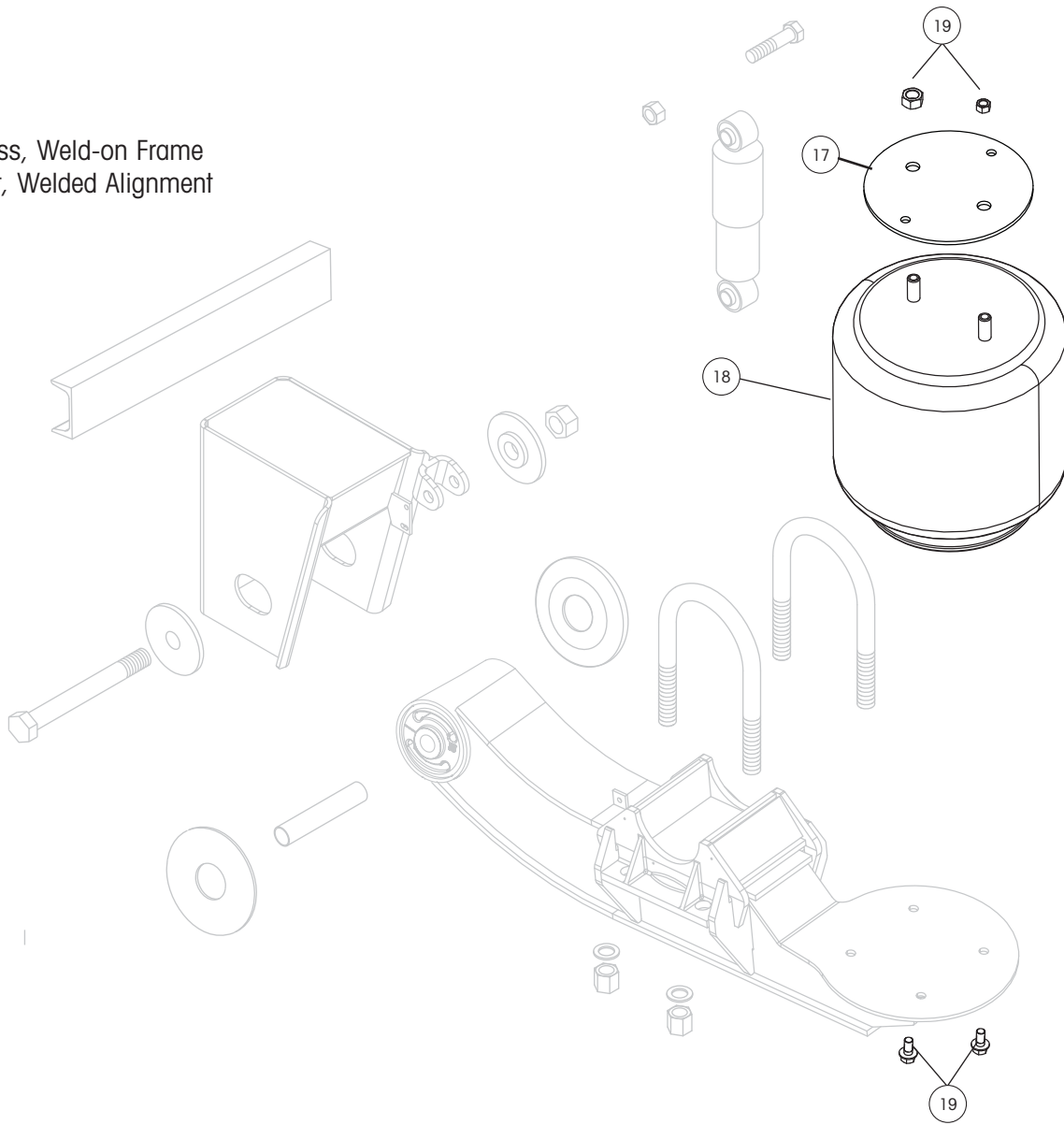
NOTE: Identification tag can be found on the front of the roadside frame bracket or the inside of the curbside beam.

HT300U UNDERSLUNG PARTS LIST



Picture shown may not resemble all models.

Wingless, Weld-on Frame
Bracket, Welded Alignment





HT300U UNDERSLUNG PARTS LIST

ITEM	DESCRIPTION	PART NO.	QTY. PER SUSP.	FITS MODELS HT300 ? OR N-HT300 ?										
16	AIR SPRING SPACER ASSEMBLY (Not Shown)			Includes air spring plate and spacer assembly										
		A-20279	2	U-12-001 U-12-024	U-12-005	U-12-015								
		C-24967	2	U-9-020 U-14-011 U-14-701	U-14-001 U-14-015 UB14-022	U-14-005 U-14-020								
		C-22514	2	U-15-011										
		C-24968	2	U-17-001 U-17-024	U-17-011	U-17-020								
		C-24969	2	U-14-023										
17	AIR SPRING PLATE	A-24966	2	U-7.5-001 U-9-001 U-9-021 U-9-501 U-12-001 U-12-020	U-7.5-501 U-9-005 U-9-022 U-9-519 U-12-005 UB9-022	U-7.5-519 U-9-011 U-9-024 U-9-701 U-12-011								
		18	AIR SPRING	S-3830	2	U-7.5-001 U-9-001 U-9-020 U-9-501 U-12-001 U-12-024 U-14-020 U-14-023 U-17-020	U-7.5-501 U-9-005 U-9-021 U-9-519 U-12-005 U-14-001 U-14-021 U-14-701 U-17-021	U-7.5-519 U-9-011 U-9-024 U-9-701 U-12-020 U-14-005 U-14-022 U-17-001						
						S-22173	2	U-9-022 U-14-011 U-17-011	U-12-011 U-14-015 UB9-022	U-12-015 U-15-011				
						19	AIR SPRING MOUNTING KIT	S-1981/2	2	U-7.5-001 U-9-001 U-9-020 U-9-024 U-9-701 U-14-011 U-14-021 U-14-701 U-17-011 UB9-022	U-7.5-501 U-9-005 U-9-021 U-9-501 U-14-001 U-14-015 U-14-022 U-15-011 U-17-020 UB14-022	U-7.5-519 U-9-011 U-9-022 U-9-519 U-14-005 U-14-020 U-14-023 U-17-001 U-17-021		
										S-20313/2	2	U-12-001 U-12-015	U-12-005 U-12-020	U-12-011 U-12-024
										20	UNIVERSAL HEIGHT CONTROL VALVE (Not Shown)	VS-227	1 ⁵	Fits all models. Includes height control valve, exhaust line fittings and spacer bracket
21	UNIVERSAL LINKAGE ASSEMBLY (Not Shown)									S-14187	1 ⁵	Includes linkage assembly and hardware		
22	DUMP VALVE (Not Shown)									VS-23460	1 ⁵	Includes dump valve and fittings		
23	PRESSURE PROTECTION VALVE (Not Shown)									VS-1128	1 ⁵	Includes valve only		

⁵ Quantities for air control components are per trailer.

NOTE: Identification tag can be found on the front of the roadside frame bracket or the inside of the curbside beam.

www.hendrickson-intl.com



Hendrickson Canada
250 Chrysler Drive, Unit #3
Brampton, ON Canada L6S 6B6
905.789.1030
Fax 905.789.1033

Trailer Commercial Vehicle Systems
2070 Industrial Place SE
Canton, OH 44707-2641 USA

866.RIDEAIR (743.3247)
330.489.0045
Fax 800.696.4416

Hendrickson Mexicana
Circuito El Marqués Sur #29
Parque Industrial El Marqués
Pob. El Colorado, Municipio El Marqués,
Querétaro, México C.P. 76246
+52 (442) 296.3600
Fax: +52 (442) 296.3601