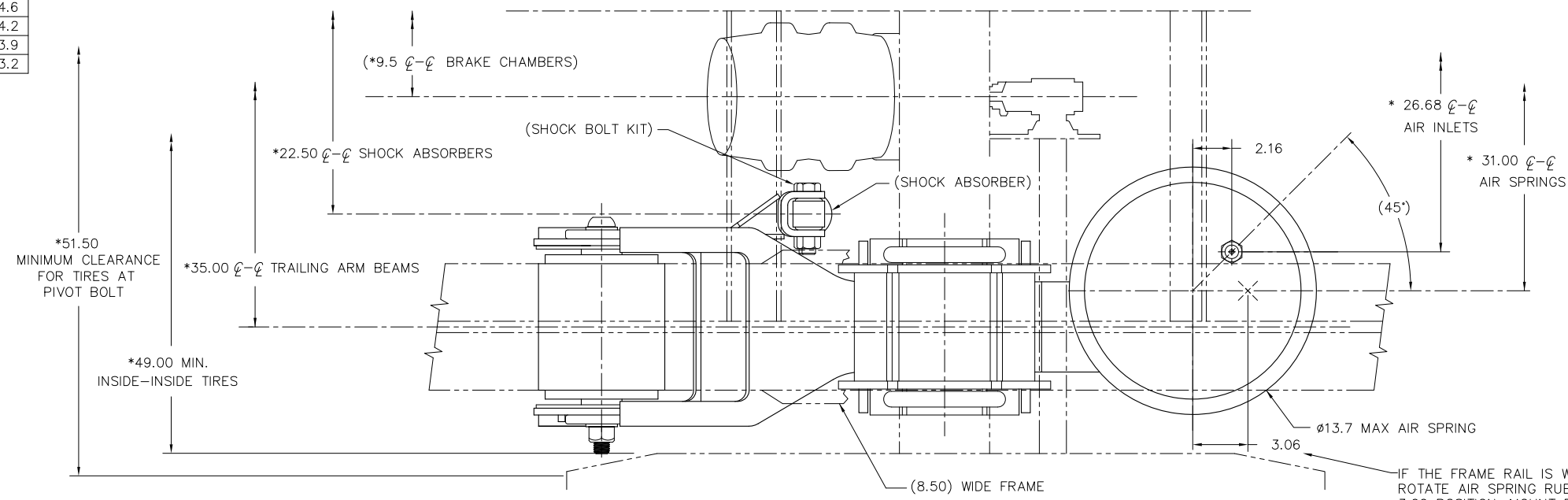


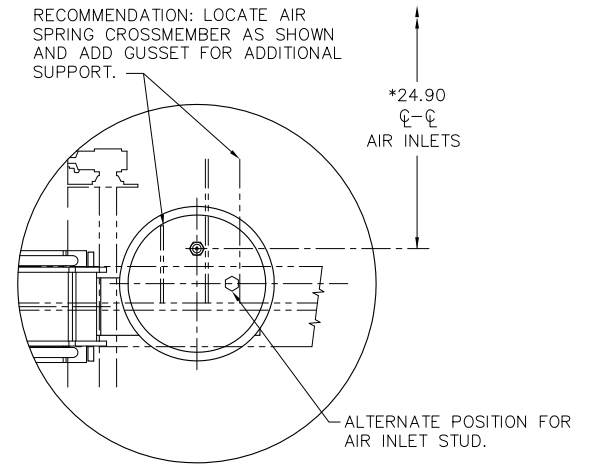
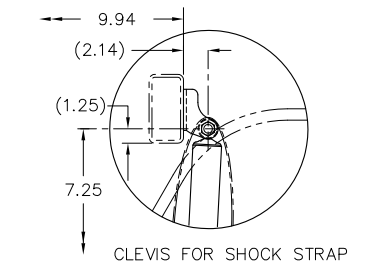
STANDARD TRAVEL,  
STANDARD SHOCK MOUNT  
DIMENSIONS (IN)

DESCRIPTION	RIDE HEIGHT		
	6.5"	7.5"	9.0"
JOUNCE	3.7	4.3	5.1
BUMPER CONTACT	3.2	3.7	4.6
REBOUND	4.2	4.2	4.2
"H"	2.8	3.2	3.9
"J"	10.7	11.7	13.2

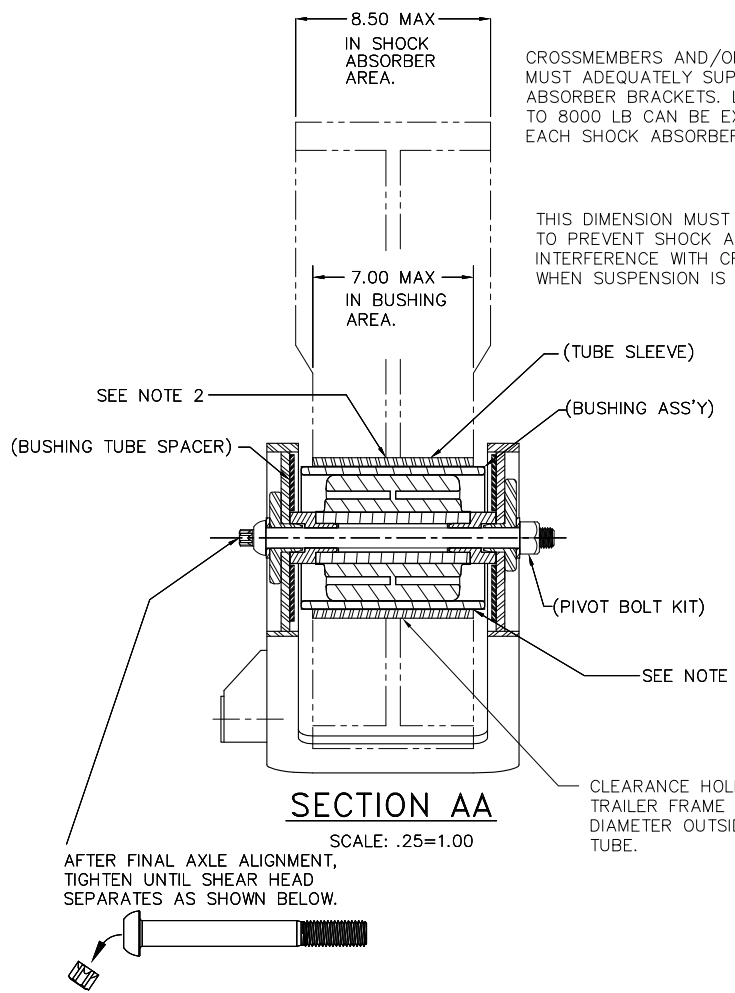


- NOTES:**
- SUGGESTED CROSSMEMBER LOCATIONS ARE SHOWN. ACTUAL SIZE AND SHAPE MAY VARY WITH TRAILER DESIGN. IT IS THE RESPONSIBILITY OF THE SUSPENSION INSTALLER TO ENSURE STRUCTURAL ADEQUACY OF TRAILER FRAME AND CROSSMEMBER.
  - REFER TO THE AXLE/Y-BEAM INSTALLATION SECTION OF L577 (HT INSTALLATION PROCEDURES) FOR INSTRUCTION ON INSTALLING THE PIVOT BUSHING TUBE SLEEVES AND ASSEMBLIES INTO THE TRAILER FRAME.
  - \* SYMBOL DENOTES TO ADD 6.0 INCHES FOR 102.0 INCH WIDE TRAILERS.
  - LOAD CAPACITY: 25,000 LB AT GROUND.
  - SEE L579, ALIGNMENT PROCEDURES, FOR QUIK-ALIGN® PIVOT CONNECTION ASSEMBLY.
  - RECOMMENDED BRAKE CAMSHAFT AND BRAKE CHAMBER LOCATIONS MAY VARY SLIGHTLY BASED ON AXLE MANUFACTURERS RECOMMENDATIONS.

- CLEARANCE SPECIFICATIONS:**
- 1.0 INCH MINIMUM REQUIRED BETWEEN TOP OF THE TIRE AND BOTTOM OF TRAILER STRUCTURE WHEN AXLE IS AT FULL JOUNCE.
  - 2.0 INCHES MINIMUM REQUIRED BETWEEN INSIDE OF TIRE AND TRAILER STRUCTURE FOR LATERAL MOVEMENT.
  - 1.0 INCH MINIMUM CLEARANCE MUST BE MAINTAINED AROUND AIR SPRING WHEN IT IS AT MAXIMUM DIAMETER.
  - ALLOW 1.5 INCHES AROUND FORWARD SECTION OF BEAM ASSEMBLY FOR SUSPENSION MOVEMENT.



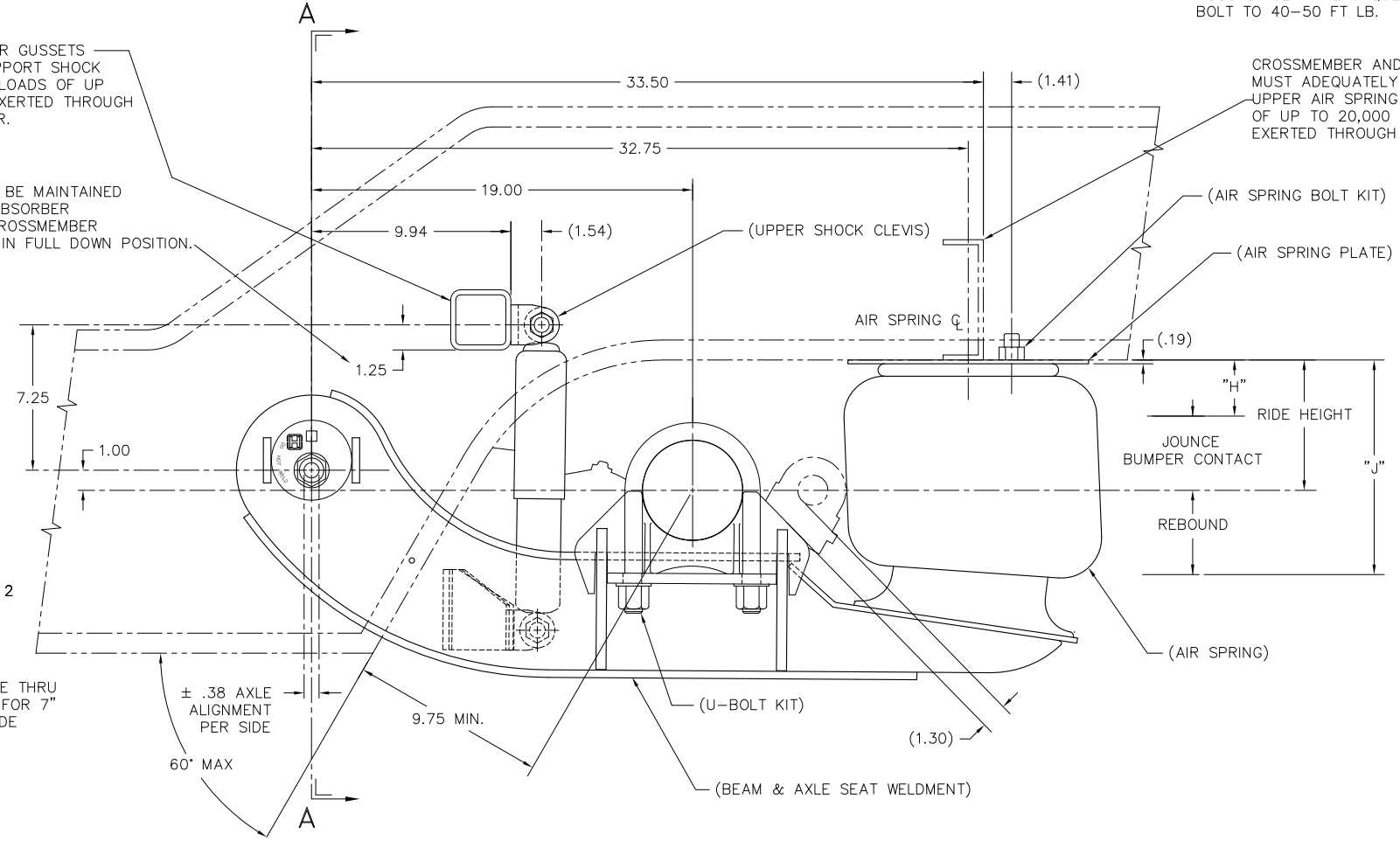
ROTATED STUD AIR SPRING  
**ROTATED AIR SPRING**  
SCALE: .125 = 1.000



CROSSMEMBERS AND/OR GUSSETS MUST ADEQUATELY SUPPORT SHOCK ABSORBER BRACKETS. LOADS OF UP TO 8000 LB CAN BE EXERTED THROUGH EACH SHOCK ABSORBER.

THIS DIMENSION MUST BE MAINTAINED TO PREVENT SHOCK ABSORBER INTERFERENCE WITH CROSSMEMBER WHEN SUSPENSION IS IN FULL DOWN POSITION.

CLEARANCE HOLE THRU TRAILER FRAME FOR 7" DIAMETER OUTSIDE TUBE.



CROSSMEMBER AND/OR GUSSETS MUST ADEQUATELY SUPPORT UPPER AIR SPRING PLATE. LOADS OF UP TO 20,000 LB CAN BE EXERTED THROUGH AIR SPRING BUMPER.

FORWARD

TORQUE SPECIFICATIONS

DESCRIPTION	SIZE	TORQUE (FT-LB)
SHOCK BOLTS, UPPER	3/4-10	210-235
SHOCK BOLTS, LOWER	3/4-16	210-235
AIR SPRING NUTS, UPPER	3/4-16	80-100
AIR SPRING BOLTS, LOWER	1/2-13	40-50
U-BOLTS	7/8-14	475-525



UNLESS OTHERWISE NOTED: TOLERANCES ARE:	J 22932 CDP 3/13/14	DRAWN BY K. ERDMANN	05-08-09
DIMENSIONS ARE:	2 22767 K/E 01-15-14	CHK'D BY C. RADCLIFF	
XX: ± .1	1 22651 CDP 11/20/13	APP'D BY S. BATES	
XXX: ± .06	0 17345 K/E 05-08-09		
ANGULAR: ± 0.5°			

HT250YB SUSPENSION  
INSTALLATION

SCALE .25=1.00	SIZE D	PAGE 1 OF 2
DRAWING NO. D-30887		

This Print remains the property of Hendrickson. All information contained thereon is confidential. It is loaned, subject to return on demand and on express condition that it is not to be copied or used directly or indirectly for any purpose other than the purpose for which it has been loaned to you.

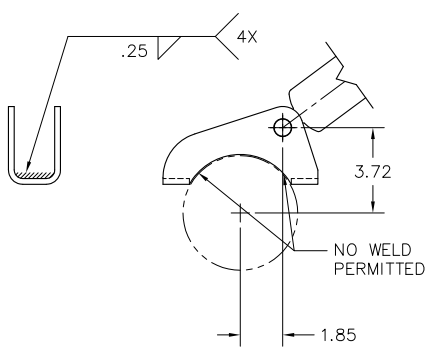
This Print remains the property of Hendrickson. All information contained thereon is confidential. It is loaned, subject to return on demand and on express condition that it is not to be copied or used directly or indirectly for any purpose other than the purpose for which it has been loaned to you.

LIMITED JOUNCE TRAVEL, REMOTE SHOCK MOUNT DIMENSIONS (IN)

DESCRIPTION	RIDE HEIGHT	
	7.5"	9.0"
JOUNCE	2.6	4.1
BUMPER CONTACT	2.1	3.6
REBOUND	5.6	4.1
"H"	4.9	4.9
"J"	13.1	13.1

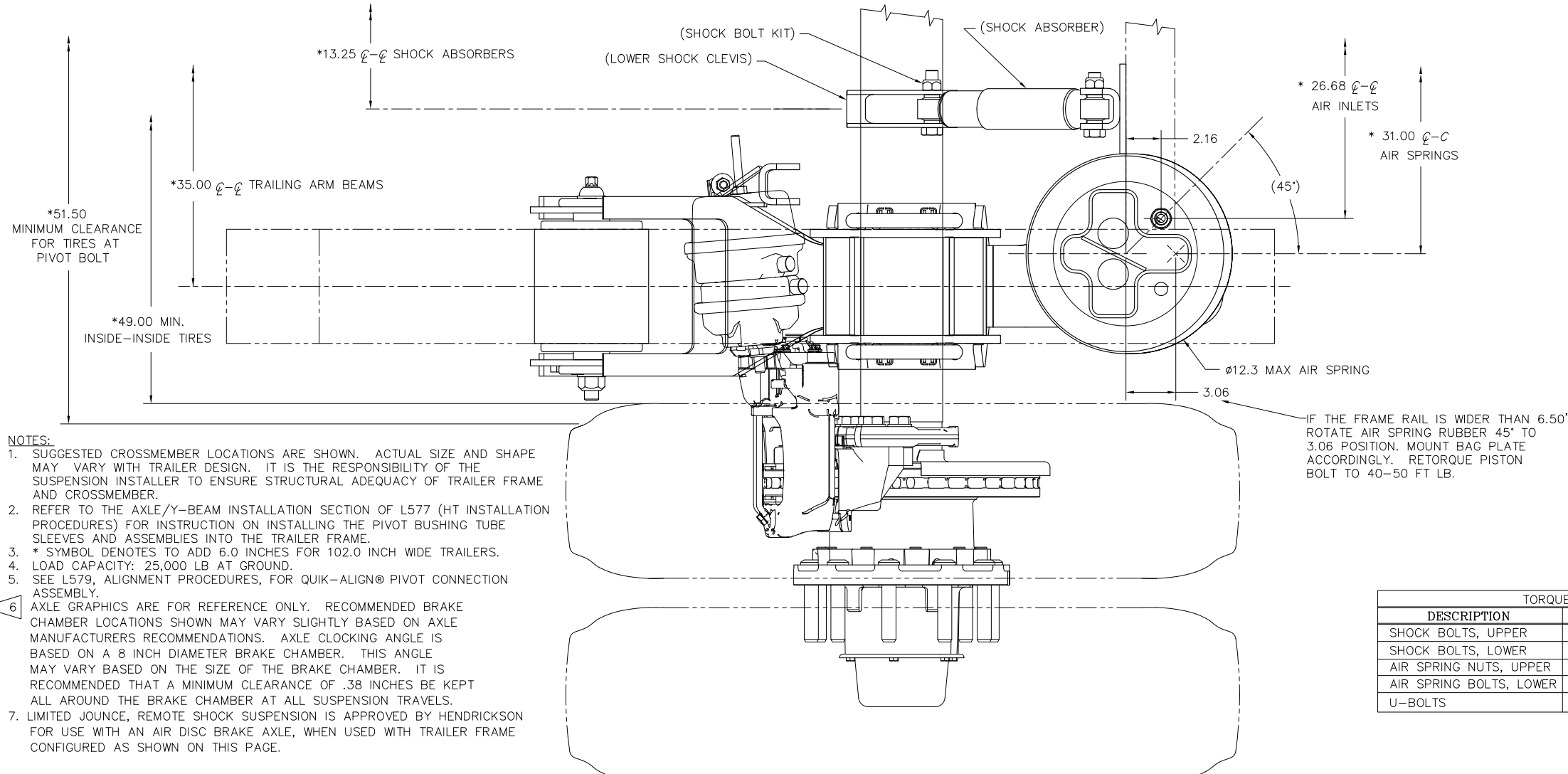
DETAIL B

SCALE: .25=1.00



SHOCK MOUNTING

(DIMENSIONS ARE WITH AXLE AT RIDE HEIGHT)

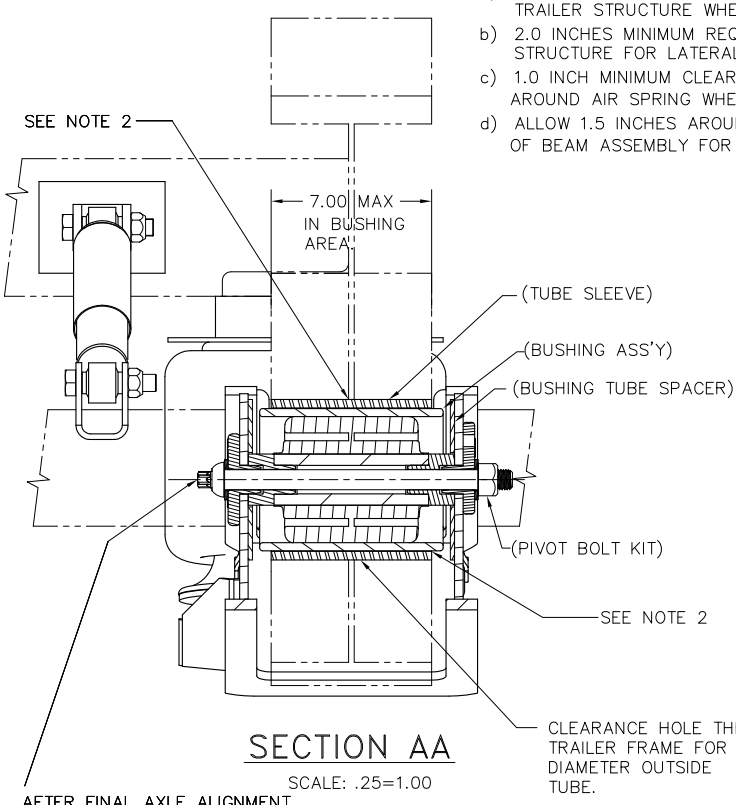


- NOTES:
- SUGGESTED CROSSMEMBER LOCATIONS ARE SHOWN. ACTUAL SIZE AND SHAPE MAY VARY WITH TRAILER DESIGN. IT IS THE RESPONSIBILITY OF THE SUSPENSION INSTALLER TO ENSURE STRUCTURAL ADEQUACY OF TRAILER FRAME AND CROSSMEMBER.
  - REFER TO THE AXLE/Y-BEAM INSTALLATION SECTION OF L577 (HT INSTALLATION PROCEDURES) FOR INSTRUCTION ON INSTALLING THE PIVOT BUSHING TUBE SLEEVES AND ASSEMBLIES INTO THE TRAILER FRAME.
  - \* SYMBOL DENOTES TO ADD 6.0 INCHES FOR 102.0 INCH WIDE TRAILERS. LOAD CAPACITY: 25,000 LB AT GROUND.
  - SEE L579, ALIGNMENT PROCEDURES, FOR QUIK-ALIGN® PIVOT CONNECTION ASSEMBLY.
  - AXLE GRAPHICS ARE FOR REFERENCE ONLY. RECOMMENDED BRAKE CHAMBER LOCATIONS SHOWN MAY VARY SLIGHTLY BASED ON AXLE MANUFACTURERS RECOMMENDATIONS. AXLE CLOCKING ANGLE IS BASED ON A 8 INCH DIAMETER BRAKE CHAMBER. THIS ANGLE MAY VARY BASED ON THE SIZE OF THE BRAKE CHAMBER. IT IS RECOMMENDED THAT A MINIMUM CLEARANCE OF .38 INCHES BE KEPT ALL AROUND THE BRAKE CHAMBER AT ALL SUSPENSION TRAVELS.
  - LIMITED JOUNCE, REMOTE SHOCK SUSPENSION IS APPROVED BY HENDRICKSON FOR USE WITH AN AIR DISC BRAKE AXLE, WHEN USED WITH TRAILER FRAME CONFIGURED AS SHOWN ON THIS PAGE.

TORQUE SPECIFICATIONS

DESCRIPTION	SIZE	TORQUE (FT-LB)
SHOCK BOLTS, UPPER	3/4-10	210-235
SHOCK BOLTS, LOWER	3/4-16	210-235
AIR SPRING NUTS, UPPER	3/4-16	80-100
AIR SPRING BOLTS, LOWER	1/2-13	40-50
U-BOLTS	7/8-14	475-525

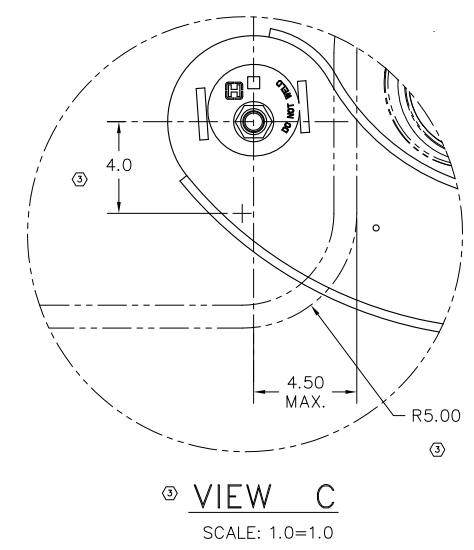
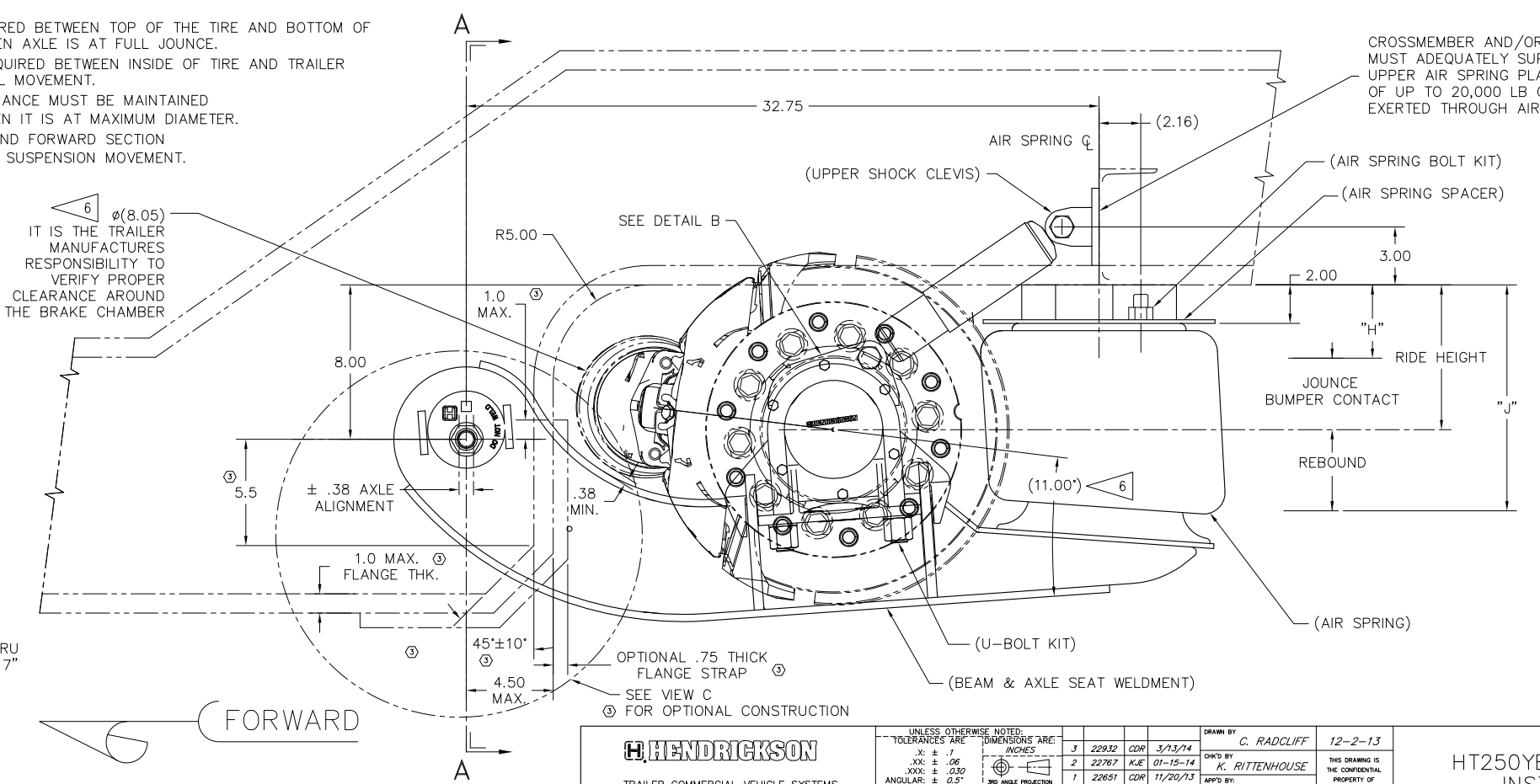
- CLEARANCE SPECIFICATIONS:
- 1.0 INCH MINIMUM REQUIRED BETWEEN TOP OF THE TIRE AND BOTTOM OF TRAILER STRUCTURE WHEN AXLE IS AT FULL JOUNCE.
  - 2.0 INCHES MINIMUM REQUIRED BETWEEN INSIDE OF TIRE AND TRAILER STRUCTURE FOR LATERAL MOVEMENT.
  - 1.0 INCH MINIMUM CLEARANCE MUST BE MAINTAINED AROUND AIR SPRING WHEN IT IS AT MAXIMUM DIAMETER.
  - ALLOW 1.5 INCHES AROUND FORWARD SECTION OF BEAM ASSEMBLY FOR SUSPENSION MOVEMENT.



SECTION AA

SCALE: .25=1.00

AFTER FINAL AXLE ALIGNMENT, TIGHTEN UNTIL SHEAR HEAD SEPARATES AS SHOWN BELOW.



VIEW C SCALE: 1.0=1.0

UNLESS OTHERWISE NOTED: TOLERANCES ARE IN INCHES

DIMENSIONS ARE:	1	2	3	CDR	DATE
XXX: ± .06	2	22767	KLE	01-15-14	
XXX: ± .030	2	22651	CDR	11/20/13	
ANGULAR: ± 0.5°	1				

DRAWN BY: C. RADCLIFF 12-2-13  
 CHKD BY: K. RITTENHOUSE  
 APP'D BY: K. ERDMANN