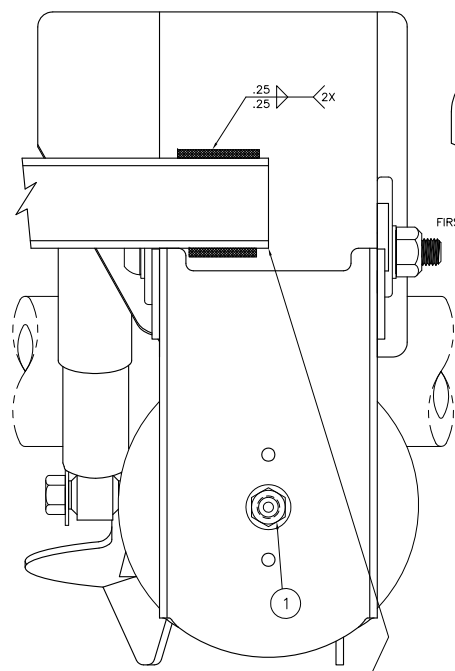
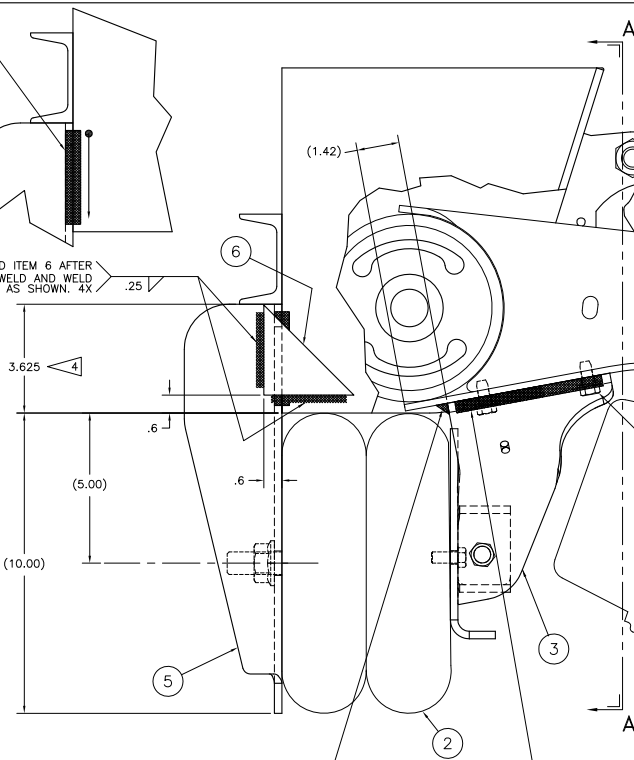


FIRST WELD, BEFORE GUSSET. 4X



ADD ITEM 6 AFTER FIRST WELD AND WELD AS SHOWN. 4X



ITEM	PART NO.	DESCRIPTION	QTY.
1	A-24614	LIFT ASSEMBLY BOLT KIT	1
2	C-23114	AIR SPRING	2
3	C-28537C	LIFT BRACKET	2
4	B-27945	BEAM PLATE ASS'Y	2
5	D-24658C	HANGER SUPPORT, LIFT	2
6	B-2901-37	.25 GUSSET	4
7	*A-26828	IDENTIFICATION TAG	1
8	*L719	UBL INSTALLATION INSTRUCTIONS	1
9	*DWG D-28866	UBL-003 DRAWING	1
10	*A-27214	1-WAY CHECK VALVE ASSEMBLY	1
11	*DWG C-30435	LIFT AXLE CONTROL DRAWING	1
12	*A-21066	RIVET, DRIVE	1

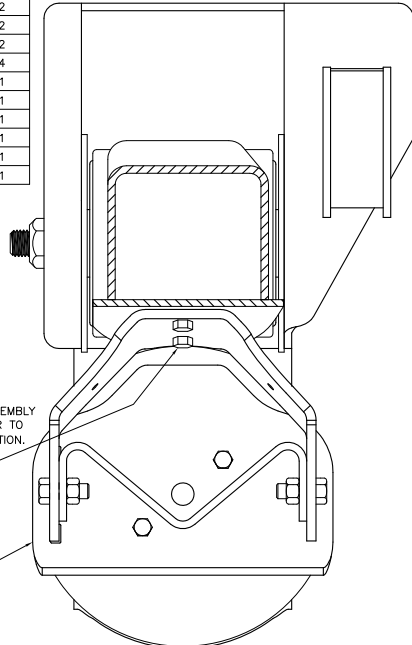
\* NOT SHOWN

NOTES:

- 12 RIDE HEIGHT SHOWN, INSTALLATION IS SAME FOR ALL RIDE HEIGHTS.
- WEIGHT: 64.90 LB. INCLUDES .58 LB FOR 65.79 INCHES OF .25 WELD.
- IF GAP EXISTS BETWEEN LIFT BRACKET (ITEM 3) AND BEAM PLATE ASS'Y (ITEM 4), USE A C-CLAMP TO COMPRESS LEGS OF LIFT BRACKET TO ALLOW BEAM PLATE ASSEMBLY TO FIT.
- WELD: 28.5 VOLTS, 400 IPM, 275-300 AMPS, 35 CFH (GAS FLOW), .045 WIRE. FILL ALL CRATERS AT END OF WELDS. WELD DIRECTION: STOP START

5 UBL-003 LIFT KIT INCLUDES A 1-WAY CHECK VALVE ASSEMBLY FOR THE USE WITH A LIFT AXLE AIR CONTROL KIT. REFER TO THE LIFT AXLE CONTROL DRAWING FOR PROPER INSTALLATION.

SECTION AA

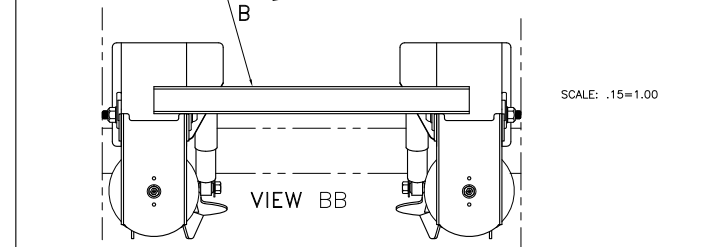
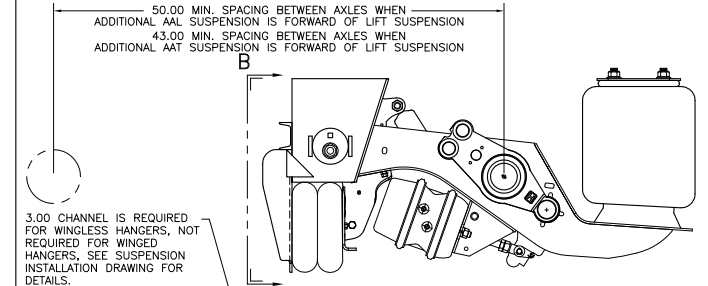


**WARNING!**  
SELF TAPPING SCREWS ARE FOR LOCATION ONLY. LIFT BRACKET (ITEM 3) MUST BE WELDED AS SHOWN.

REAR SELF-TAPPING SCREW MAY NEED TO BE REMOVED AFTER WELDING OPERATION WHEN LONG STROKE BRAKE CHAMBERS ARE USED.

**IMPORTANT!**  
REMOVE BEAM PLATE ASSEMBLIES (TWO 1/2 BOLTS) TO INSTALL OR REMOVE PARKING BRAKE CHAMBERS. DOES NOT APPLY TO SERVICE BRAKE CHAMBERS.

INTRAAAX AAL INSTALLATION



SCALE: .15=1.00

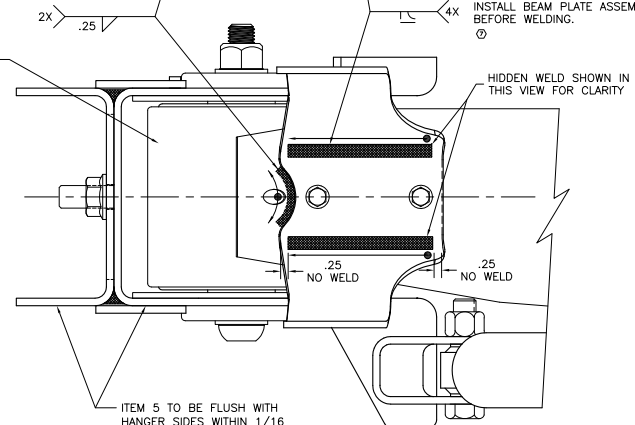
**IMPORTANT!**  
IF CROSS CHANNEL IS REQUIRED INSTALL HANGER SUPPORT BRACKET (ITEM 5) FIRST, REST CHANNEL ON TOP OF BRACKET SURFACE AND WELD AS SHOWN.

IF RETROFIT, TAKE OFF CHANNEL AND RELOCATE.

- ASSEMBLY PROCEDURE:
- 1 LOCATE LIFT BRACKETS (ITEM 3) WITH SELF-TAPPING SCREWS.
  - 2 INSTALL BEAM PLATE ASSEMBLIES (ITEM 4) TO LIMIT DISTORTION OF LIFT BRACKETS (ITEM 3) DURING WELDING.
  - 3 WELD TO BEAMS AS SHOWN.
  - 4 LOCATE TOP OF HANGER SUPPORT ASSEMBLY (ITEM 5) 3 5/8 FROM BOTTOM OF HANGERS AND WELD AS SHOWN.
  - 5 LOCATE AND WELD "C" CHANNEL AS SHOWN IF REQUIRED.
  - 6 IF PARKING BRAKES ARE REQUIRED, INSTALL AT THIS TIME.
  - 7 INSTALL AIR SPRINGS (ITEM 2).

AIR SPRING NOT SHOWN FOR CLARITY

**IMPORTANT!**  
INSTALL BEAM PLATE ASSEMBLIES BEFORE WELDING.

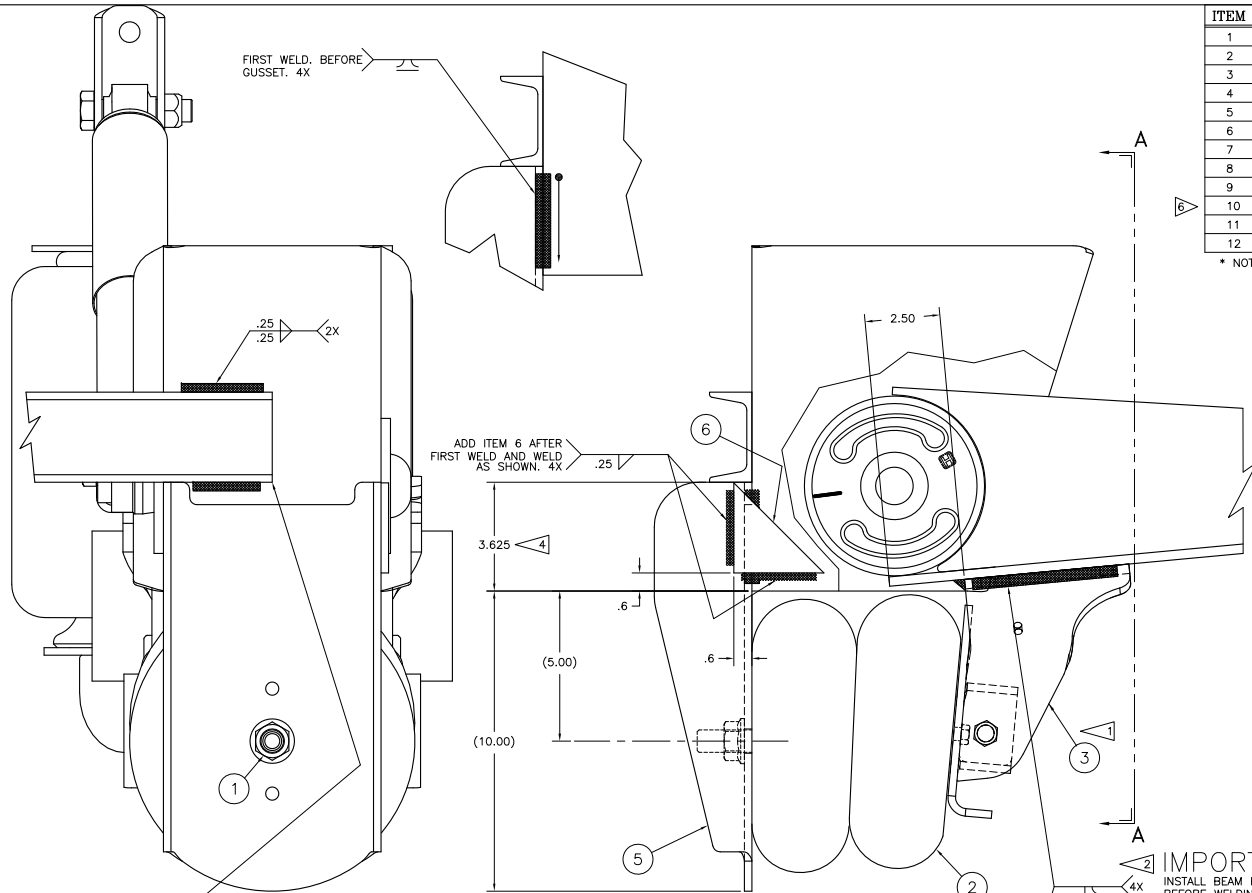


This Print remains the property of Hendrickson. All information contained thereon is confidential. It is loaned, subject to return on demand and on express condition that it is not to be copied or used directly or indirectly for any purpose other than the purpose for which it has been loaned to you.

TORQUE SPECIFICATIONS		
DESCRIPTION	SIZE	TORQUE(FT-LB)
AIR SPRING BOLTS	3/8-16	25-35
AIR SPRING NUT	3/4-16	45-55
BEAM PLATE ASSEMBLY BOLTS	1/2-13	55-75
BRAKE CHAMBER MTC. NUTS	5/8-11	100-110
SELF TAPPING SCREWS	3/8	160-180 IN-LB

<p><b>HENDRICKSON</b></p> <p>TRAILER COMMERCIAL VEHICLE SYSTEMS</p> <p>2000 Northline Road St. Louis, MO 63103-1000 USA</p>	<p>UNLESS OTHERWISE NOTED, TOLERANCES ARE IN INCHES</p> <p>DECIMALS FRACTIONS</p> <p>± .01 ± .005 ± .003 ± .002</p> <p>ANGULAR ± 0.5° ± 0.25°</p> <p>DIMENSIONS APPLICABLE TO THIS DRAWING UNLESS OTHERWISE NOTED</p>	<p>7 20460</p> <p>8 19856</p> <p>9 19856</p> <p>10 19856</p> <p>11 19856</p> <p>12 19856</p>	<p>DATE: 11-1-05</p> <p>BY: R. GORE</p>	<p>SCALE: 30=1.00</p> <p>REV: D</p> <p>FIG: 1 OF 2</p>
	<p>TRAILER COMMERCIAL VEHICLE SYSTEMS</p> <p>2000 Northline Road St. Louis, MO 63103-1000 USA</p>	<p>UNLESS OTHERWISE NOTED, TOLERANCES ARE IN INCHES</p> <p>DECIMALS FRACTIONS</p> <p>± .01 ± .005 ± .003 ± .002</p> <p>ANGULAR ± 0.5° ± 0.25°</p> <p>DIMENSIONS APPLICABLE TO THIS DRAWING UNLESS OTHERWISE NOTED</p>	<p>7 20460</p> <p>8 19856</p> <p>9 19856</p> <p>10 19856</p> <p>11 19856</p> <p>12 19856</p>	<p>DATE: 11-1-05</p> <p>BY: R. GORE</p>

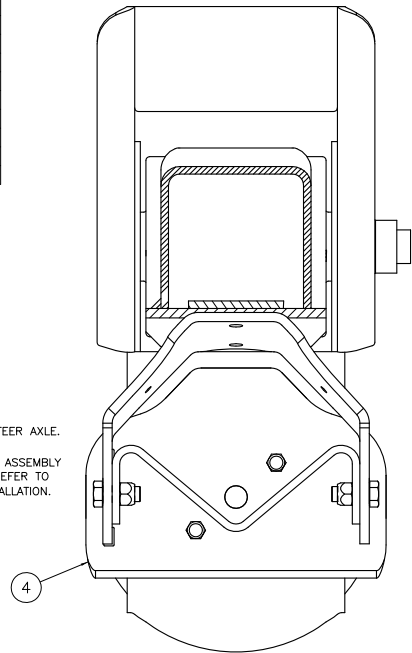
UBL-003 D-28866



ITEM	PART NO.	DESCRIPTION	QTY.
1	A-24614	LIFT ASSEMBLY BOLT KIT	1
2	C-23114	AIR SPRING	2
3	C-28537C	LIFT BRACKET	2
4	B-27945	BEAM PLATE ASS'Y	2
5	D-24658C	HANGER SUPPORT, LIFT	2
6	B-2901-37	.25 GUSSET	4
7	*A-26828	IDENTIFICATION TAG	1
8	*L719	UBL INSTALLATION INSTRUCTIONS	1
9	*DWG D-28866	UBL-003 DRAWING	1
10	*A-27214	1-WAY CHECK VALVE ASSEMBLY	1
11	*DWG C-30435	LIFT AXLE CONTROL DRAWING	1
12	*A-21066	RIVET, DRIVE	1

- \* NOT SHOWN
- NOTES:
- 12 RIDE HEIGHT SHOWN, INSTALLATION IS SAME FOR ALL RIDE HEIGHTS.
  - WEIGHT: 64.90 LB  
INCLUDES .58 LB FOR 65.79 INCHES OF .25 WELD.
  - IF GAP EXISTS BETWEEN LIFT BRACKET (ITEM 3) AND BEAM PLATE ASS'Y (ITEM 4), USE A C-CLAMP TO COMPRESS LEGS OF LIFT BRACKET TO ALLOW BEAM PLATE ASSEMBLY TO FIT.
  - WELD:  
28.5 VOLTS, 400 IPM, 275-300 AMPS,  
35 CFH (GAS FLOW), .045 WIRE  
FILL ALL CRATERS AT END OF WELDS.  
WELD DIRECTION:  
STOP      START
  - DO NOT USE THIS LIFT KIT WITH DUAL TIRE SELF-STEER AXLE.
- 6 UBL-003 LIFT KIT INCLUDES A 1-WAY CHECK VALVE ASSEMBLY FOR THE USE WITH A LIFT AXLE AIR CONTROL KIT. REFER TO THE LIFT AXLE CONTROL DRAWING FOR PROPER INSTALLATION.

SECTION AA



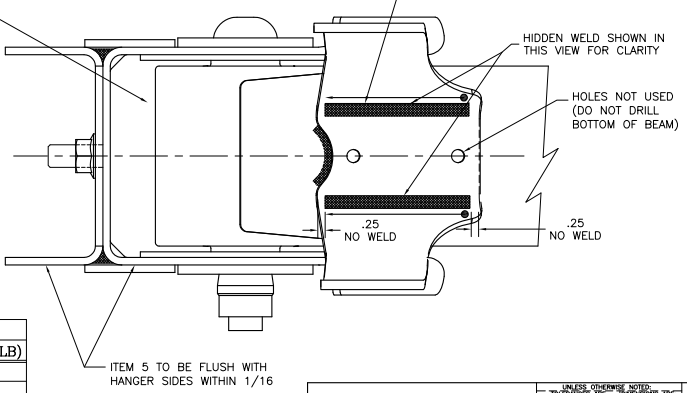
**IMPORTANT!**  
IF CROSS CHANNEL IS REQUIRED INSTALL HANGER SUPPORT BRACKET (ITEM 5) FIRST. REST CHANNEL ON TOP OF BRACKET SURFACE AND WELD AS SHOWN.

IF RETROFIT, TAKE OFF CHANNEL AND RELOCATE.

ASSEMBLY PROCEDURE:

- 1 LOCATE LIFT BRACKETS (ITEM 3) AND CLAMP INTO PLACE. HOLES IN LIFT BRACKETS NOT USED (DO NOT DRILL BEAM).
- 2 INSTALL BEAM PLATE ASSEMBLIES (ITEM 4) TO LIMIT DISTORTION OF LIFT BRACKETS (ITEM 3) DURING WELDING.
- 3 WELD TO BEAMS AS SHOWN.
- 4 LOCATE TOP OF HANGER SUPPORT ASSEMBLY (ITEM 5) 3 5/8 FROM BOTTOM OF HANGERS AND WELD AS SHOWN.
- 5 LOCATE AND WELD "C" CHANNEL AS SHOWN IF REQUIRED.
- 6 INSTALL AIR SPRINGS (ITEM 2).

AIR SPRING NOT SHOWN FOR CLARITY



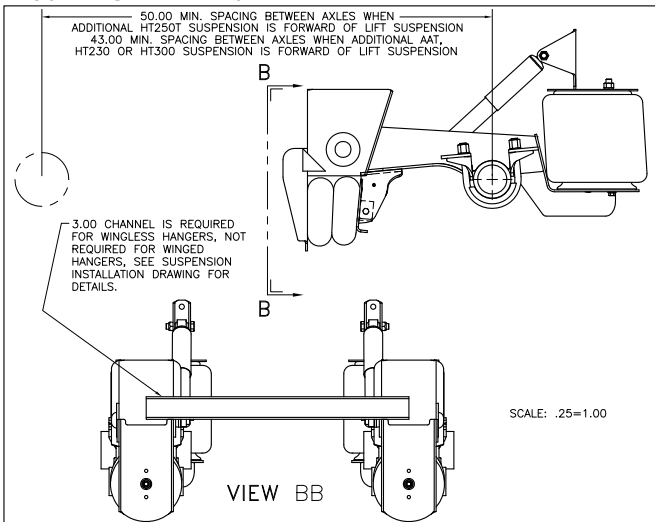
**IMPORTANT!**  
INSTALL BEAM PLATE ASSEMBLIES BEFORE WELDING.

HIDDEN WELD SHOWN IN THIS VIEW FOR CLARITY

HOLES NOT USED (DO NOT DRILL BOTTOM OF BEAM)

ITEM 5 TO BE FLUSH WITH HANGER SIDES WITHIN 1/16

HT250T INSTALLATION



SCALE: .25=1.00

VIEW BB

This Print remains the property of Hendrickson. All information contained thereon is confidential. It is loaned, subject to return on demand and on express condition that it is not to be copied or used directly or indirectly for any purpose other than the purpose for which it has been loaned to you.

TORQUE SPECIFICATIONS		
DESCRIPTION	SIZE	TORQUE(FT-LB)
AIR SPRING BOLTS	3/8-16	25-35
AIR SPRING NUT	3/4-16	45-55
BEAM PLATE ASSEMBLY BOLTS	1/2-13	55-75