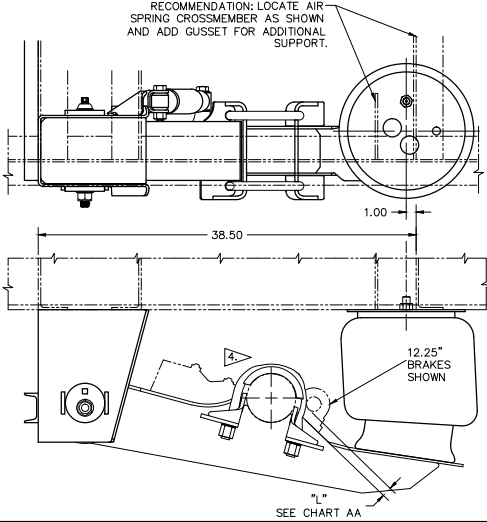
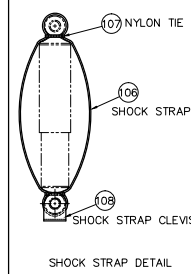
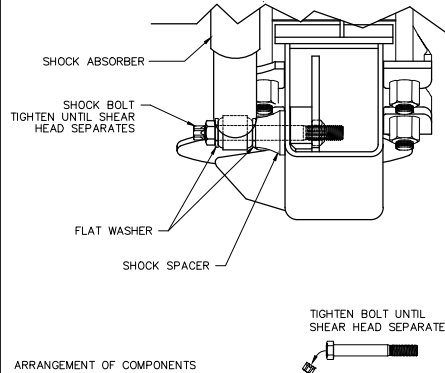


OPTIONAL ROTATED AIR SPRING VIEW



LOWER SHOCK MOUNTING ILLUSTRATION



REMOTE SHOCK MOUNTING

(DIMENSIONS SHOWN ARE WITH AXLE AT RIDE HEIGHT)
DO NOT SCALE

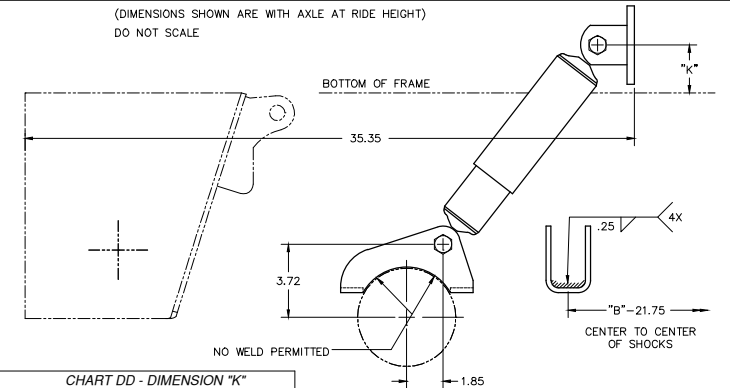


CHART DD - DIMENSION "K"

TRAVEL	5.5	6.5	7.5	9.0	12.0	14.0
STANDARD	4.88					
EXTENDED REBOUND	N/A	10.50	9.25	9.00	N/A	

NOTES:
1. // DENOTES WELD PLACEMENT.
2. DIMENSIONS SHOWN ARE FOR STANDARD FRAME BRACKET MGT. ONLY. SEE PAGE 4 FOR ANGLED STRUCTURE REMOTE SHOCK DIMENSIONS.

CHART BB TORQUE SPECIFICATIONS

DESCRIPTION	SIZE	TORQUE (FT LB)
SHOCK BOLTS, UPPER	3/4-10	210-235
*SHOCK BOLTS, LOWER	3/4-10	210-235
AIR SPRING NUTS, UPPER	3/4-16	80-100
AIR SPRING BOLTS, LOWER	1/2-13	40-50
U-BOLTS	7/8-14	475-525

*USE SHEAR HEAD BOLT TO ESTABLISH TORQUE.

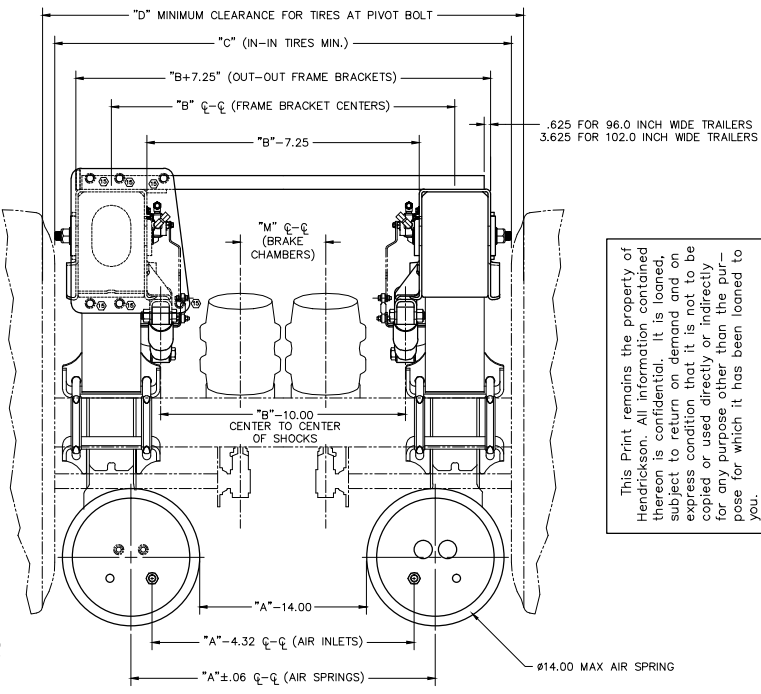
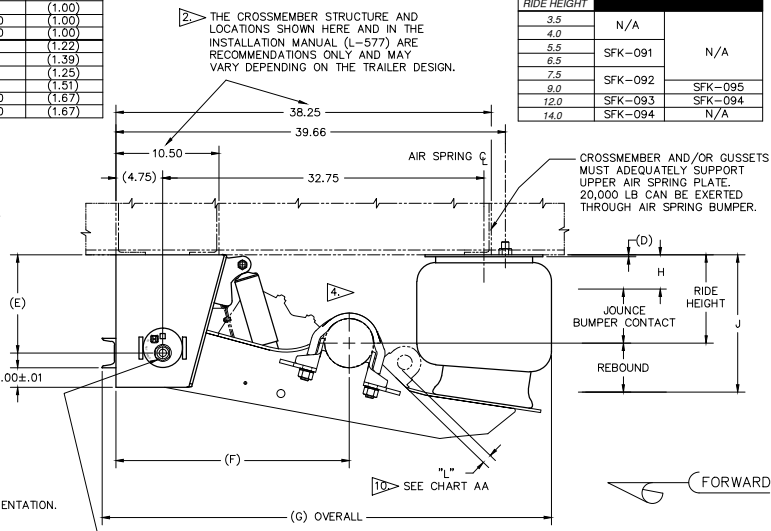
CHART CC

TRAILER WIDTH (IN)	96.0	102.0
DIMENSION "A" (IN)	31.00	37.00
DIMENSION "B" (IN)	35.00	41.00
DIMENSION "C" (IN)	46.50	52.50
DIMENSION "D" (IN)	49.00	55.00
DIMENSION "M" (IN)	9.5 MAX.	15.5 MAX.

CHART AA

RIDE HEIGHT	20", 22", 24" TIRES		19.5" TIRES		17.5" TIRES	
	DIM "L"	DIM "L"	DIM "L"	DIM "L"	DIM "L"	DIM "L"
3.50-4.00 RIDE HEIGHT WELD-ON	3.50 (2.60)	3.50 (2.27)	3.50 (1.48)	3.50 (1.48)	3.50 (1.48)	3.50 (1.48)
5.50-14.00 RIDE HEIGHT	4.00 (2.71)	4.00 (2.37)	4.00 (1.56)	4.00 (1.56)	4.00 (1.56)	4.00 (1.56)
	5.00 (1.00)	5.00 (1.00)	5.00 (1.00)	5.00 (1.00)	5.00 (1.00)	5.00 (1.00)
	6.50 (1.00)	6.50 (1.00)	6.50 (1.00)	6.50 (1.00)	6.50 (1.00)	6.50 (1.00)
	7.50 (1.00)	7.50 (1.00)	7.50 (1.00)	7.50 (1.00)	7.50 (1.00)	7.50 (1.00)
	9.00 (1.00)	9.00 (1.00)	9.00 (1.00)	9.00 (1.00)	9.00 (1.00)	9.00 (1.00)
REMOTE SHOCK WELD-ON	12.00 (1.00)	12.00 (1.00)	12.00 (1.00)	12.00 (1.00)	12.00 (1.00)	12.00 (1.00)
	14.00 (1.00)	14.00 (1.00)	14.00 (1.00)	14.00 (1.00)	14.00 (1.00)	14.00 (1.00)
	5.50 (2.25)	5.50 (1.94)	5.50 (1.22)	5.50 (1.22)	5.50 (1.22)	5.50 (1.22)
	6.50 (2.49)	6.50 (2.16)	6.50 (1.39)	6.50 (1.39)	6.50 (1.39)	6.50 (1.39)
	7.50 (2.28)	7.50 (1.97)	7.50 (1.25)	7.50 (1.25)	7.50 (1.25)	7.50 (1.25)
	9.00 (2.63)	9.00 (2.30)	9.00 (1.51)	9.00 (1.51)	9.00 (1.51)	9.00 (1.51)
	12.00 (2.85)	12.00 (2.50)	12.00 (1.67)	12.00 (1.67)	12.00 (1.67)	12.00 (1.67)
	14.00 (2.85)	14.00 (2.50)	14.00 (1.67)	14.00 (1.67)	14.00 (1.67)	14.00 (1.67)

- NOTES:
- ALL WELDING MUST BE DONE IN ACCORDANCE WITH FORM L-577.
 - IT IS THE RESPONSIBILITY OF THE INSTALLER TO ENSURE PROPER VEHICLE FRAME DESIGN IN AREA OF SUSPENSION ATTACHMENT.
 - SEE L1182 FOR HEIGHT CONTROL KIT OPTIONS. @
 - NOTICE: U-BOLT KIT VARIES DEPENDING ON RIDE HEIGHT AND/OR TIRE SIZE. STANDARD U-BOLT SHOWN IN MAIN VIEWS. FLATTENED U-BOLT SHOWN IN DETAIL VIEW ABOVE. FLATTENED SIDE OF U-BOLT IN KIT (A-22237) MUST BE INSTALLED ON THE SAME SIDE OF THE AXLE AS THE S-CAM, ESPECIALLY ON 12.25" X 7.00" BRAKES.
 - SEE CHART BB FOR TORQUE SPECIFICATIONS OF FASTENERS.
 - FOR THIS SUSPENSION HENDRICKSON REQUIRES A 3 INCH C-CHANNEL AS SHOWN OR EQUIVALENT FOR PROPER SUPPORT. IF THE CUSTOMER PREFERS THAT HENDRICKSON DOES NOT SUPPLY THE CHANNEL, THEN THE CUSTOMER MUST REINFORCE THE SUSPENSION WITH A CHANNEL OF EQUAL OR GREATER STRENGTH OR A DESIGN THAT RESULTS IN EQUAL OR GREATER SUPPORT.
 - RECOMMENDED BRAKE CAMSHAFT AND BRAKE CHAMBER LOCATIONS LISTED IN CHART AA ARE FOR REFERENCE ONLY AND MAY VARY SLIGHTLY BASED ON AXLE MANUFACTURERS RECOMMENDATIONS.
 - AN S-CAM "L" POSITION OF 1.00" IS SHOWN TO PROVIDE CLEARANCE AROUND THE BRAKE CHAMBER FOR ACCESS TO THE LOWER SHOCK BOLT WITH AN IMPACT WRENCH. THE S-CAM CANNOT BE POSITIONED FOR SHOCK BOLT CLEARANCE ON 3.5", 4", 5.5" AND 6.5" RIDE HEIGHTS DUE TO INTERFERENCE BETWEEN THE BRAKE CHAMBER AND THE TRAILER FRAME AT FULL JOUNCE.
 - LOAD CAPACITY: 25,000 LB @ GROUND.
 - FOR APPLICATIONS WITH SBL AND CL LIFT KITS, SEE PAGE 3 FOR S-CAM ORIENTATION. CLEARANCE SPECIFICATIONS:



This Print remains the property of Hendrickson. All information contained hereon is confidential. It is loaned, subject to return on demand and on express condition that it is not to be copied or used directly or indirectly for any purpose other than the purpose for which it has been loaned to you.

	STANDARD TRAVEL HT250US										
	RISE HEIGHT	△ JOUNCE	△ REBOUND	BUMPER CONTACT	D	E	F	G	△ H	△ J	SUSP. WEIGHT (LB)
WELD-ON	3.5	2.6	3.0	2.2	.19	4.5	23.74	45.18	.9	6.5	337
	4.0	3.1	3.2	2.5	.19	4.5	23.76	45.68	.9	7.2	346
	5.5	2.1	4.7	1.6	.19	8.0	23.60	45.76	3.4	10.2	363
	6.5	3.1	3.7	2.6	.19	8.0	23.71	45.76	3.4	10.2	363
	7.5	3.2	6.3	2.7	.19	10.0	23.61	45.76	4.3	13.8	380
	9.0	4.7	4.8	4.2	.19	10.0	23.75	45.76	4.3	13.8	380
	12.0	5.3	4.3	4.8	3.00	12.0	23.78	45.76	6.7	16.3	396
14.0	5.3	4.3	4.7	5.00	14.0	23.78	45.76	8.7	18.3	410	
BOLT-ON	5.5	1.9	5.2 (6)	1.4	.25	8.38	23.55	45.99	3.6	10.7 (6)	379 (6)
	6.5	2.9	4.2 (6)	2.4	.25	8.38	23.68	45.99	3.6	10.7 (6)	379 (6)
	7.5	3.0	6.8 (6)	2.5	.25	10.38	23.56	45.99	4.5 (6)	14.3 (6)	396 (6)
	9.0	4.5	5.3 (6)	4.0 (6)	.25	10.38	23.73	45.99	4.5	14.3 (6)	396 (6)
	12.0	4.9 (6)	4.6	4.4 (6)	3.19	12.5 (6)	23.77	45.99	7.1 (6)	16.6	424 (6)
14.0	4.9 (6)	4.6 (6)	4.4 (6)	5.19	14.5 (6)	23.77	45.99	9.1 (6)	18.6 (6)	438 (6)	
REMOTE SHOCK MOUNTING	5.5	2.1	4.2	1.6	.19	8.0	23.60	45.76	3.4	9.7	371
	6.5	3.1	3.3	2.6	.19	8.0	23.71	45.76	3.4	9.8	371
	7.5	3.2	5.3	2.7	.19	10.0	23.61	45.76	4.3	12.8	387
	9.0	4.7	3.8	4.2	.19	10.0	23.75	45.76	4.3	12.8	387
	12.0	5.3	5.2	4.7	3.00	12.0	23.78	45.76	6.7	17.2	406
14.0	5.3	3.5	4.7	5.00	14.0	23.78	45.76	8.7	17.5	413	
SHORT BELLOWS	6.5	3.1	3.7	2.6	.19	8.0	23.71	45.79	3.4	10.2	351
FRAME CLEARANCE	14.0	5.3	4.1	4.7	5.00	14.0	23.77	45.75	8.7	18.1	410
ANGLED STRUCTURE	6.5	3.1	5.2	2.6	.19	8.0	23.71	45.79	3.4	11.7	357
ANGLED STRUCTURE REMOTE SHOCK MOUNTING	7.5	3.2	4.1	2.7	.19	8.0	23.61	45.98	4.3	11.6	359
ROTATED STRUCTURE	7.5	3.2	5.3	2.7	.19	8.0	23.22	45.99	4.3	12.8	363

NOTES:

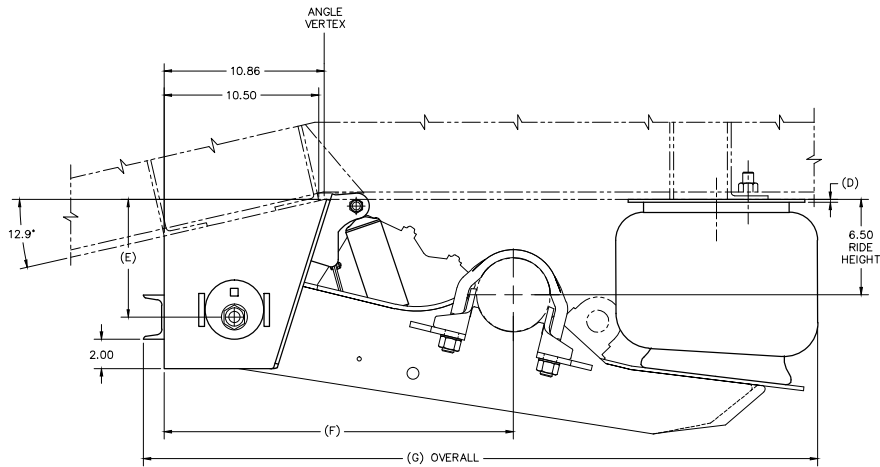
- SUSP. WEIGHT INCLUDES SUSPENSION COMPONENTS ONLY. WEIGHT REFLECTS STANDARD AIR SPRING, FRAME BRACKETS WITH STANDARD SHOCKS. ADD 3.00 LB. FOR HIGH DAMPING SHOCK.
- CONTACT HENDRICKSON FOR ALLOWABLE RIDE HEIGHT RANGES.
- △ JOUNCE AND REBOUND DIMENSIONS CHANGE AS THE RIDE HEIGHT CHANGES FROM THE NOMINAL POSITION.
- △ DIMENSIONS "H" & "J" WILL REMAIN CONSTANT REGARDLESS OF RIDE HEIGHT VARIATION FROM NOMINAL POSITION.
- RISE HEIGHT - JOUNCE = "H"
RISE HEIGHT + REBOUND = "J"
- △ WEIGHT FOR 3.5 RIDE HEIGHT REFLECTS HIGH PRESSURE AIR SPRING.

	LIMITED JOUNCE TRAVEL HT250US										
	RISE HEIGHT	△ JOUNCE	△ REBOUND	BUMPER CONTACT	D	E	F	G	△ H	△ J	SUSP. WEIGHT (LB)
WELD-ON	3.5	2.2	3.0	1.7	1.00	4.50	23.75	45.18	1.3	6.5	340
	6.5	1.8	7.3	1.2	1.00	10.0	23.45	45.76	4.7	13.8	382
	7.5	2.8	6.3	2.2	1.00	10.0	23.61	45.76	4.7	13.8	382
	9.0	3.1	4.8	2.6	3.00	10.0	23.75	45.76	5.9	13.8	389
	12.0	3.3	6.3	2.7	5.00	14.0	23.67	45.76	8.7	18.3	410
BOLT-ON	6.5	1.5	7.8 (6)	1.0	1.19	10.38	23.38	45.99	5.0	14.3 (6)	399 (6)
	7.5	2.5	6.8 (6)	2.0	1.19	10.38	23.56	45.99	5.0	14.3 (6)	399 (6)
	9.0	2.9	5.3 (6)	2.3	3.19	10.38	23.73	45.99	6.1	14.3 (6)	406 (6)
12.0	2.9 (6)	6.6 (6)	2.4 (6)	5.19	14.5 (6)	23.63	45.99	9.1 (6)	18.6 (6)	438 (6)	

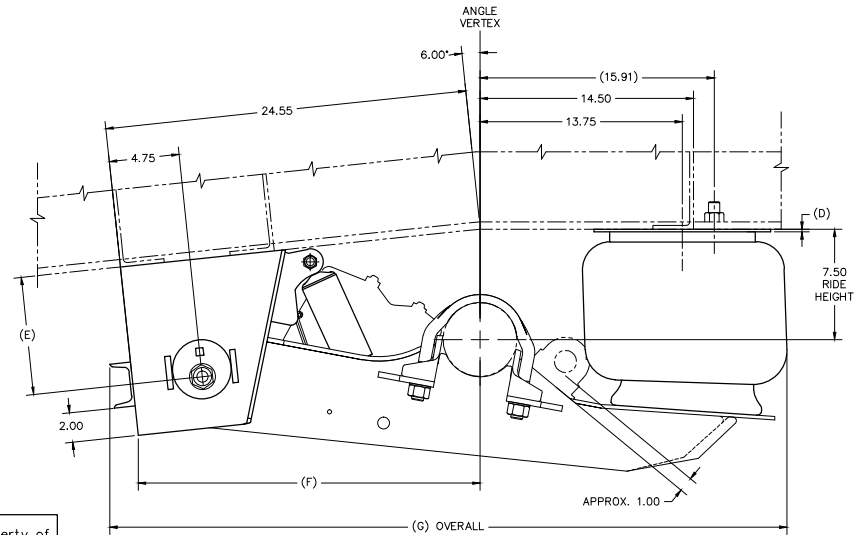
	EXTENDED REBOUND TRAVEL HT250US										
	RISE HEIGHT	△ JOUNCE	△ REBOUND	BUMPER CONTACT	D	E	F	G	△ H	△ J	SUSP. WEIGHT (LB)
WELD-ON	6.5	3.1	5.2	2.6	.19	8.0	23.71	45.79	3.4	11.7	364
	6.5	3.1	5.2	2.6	.19	8.0	23.71	45.76	3.4	11.7	374
	7.5	3.2	5.5	2.7	.19	10.0	23.61	45.76	4.3	13.0	389
REMOTE SHOCK MOUNTING	9.0	4.7	4.3	4.2	.19	10.0	23.75	45.76	4.3	13.3	389

	STANDARD TRAVEL SELF STEER AXLE HT250US										
	RISE HEIGHT	△ JOUNCE	△ REBOUND	BUMPER CONTACT	D	E	F	G	△ H	△ J	SUSP. WEIGHT (LB)
WELD-ON	7.5	2.9	6.3	2.3	.69	10.0	23.61	48.26	4.6	13.8	388
	9.0	4.4	4.8	3.8	.69	10.0	23.75	48.26	4.6	13.8	388
	12.0	4.9	4.3	4.4	3.50	12.0	23.78	48.26	7.1	16.3	405
	14.0	4.9	4.3	4.4	5.50	14.0	23.78	48.26	9.1	18.3	418
BOLT-ON	9.0	3.9 (6)	5.3 (6)	3.4	1.19	10.38	23.73	48.49	5.1 (6)	14.3 (6)	406 (6)
	12.0	4.3 (6)	4.6	3.8 (6)	4.19	12.5 (6)	23.77	48.49	7.7 (6)	16.6	435 (6)
	14.0	4.3 (6)	4.6 (6)	3.8 (6)	6.19	14.5 (6)	23.77	48.49	9.7 (6)	18.6 (6)	448 (6)

This Print remains the property of Hendrickson. All information contained thereon is confidential. It is loaned, subject to return on demand and on express condition that it is not to be copied or used directly or indirectly for any purpose other than the purpose for which it has been loaned to you.

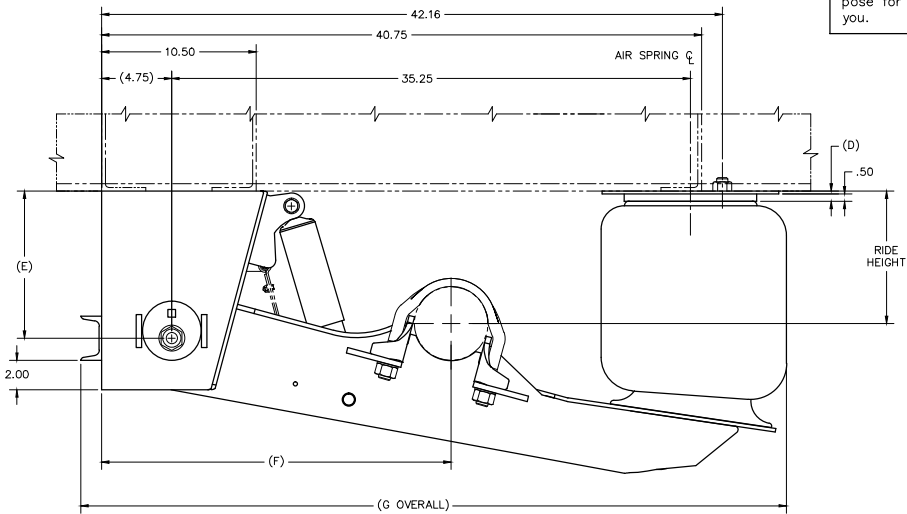


ANGLED STRUCTURE MOUNTING INFORMATION

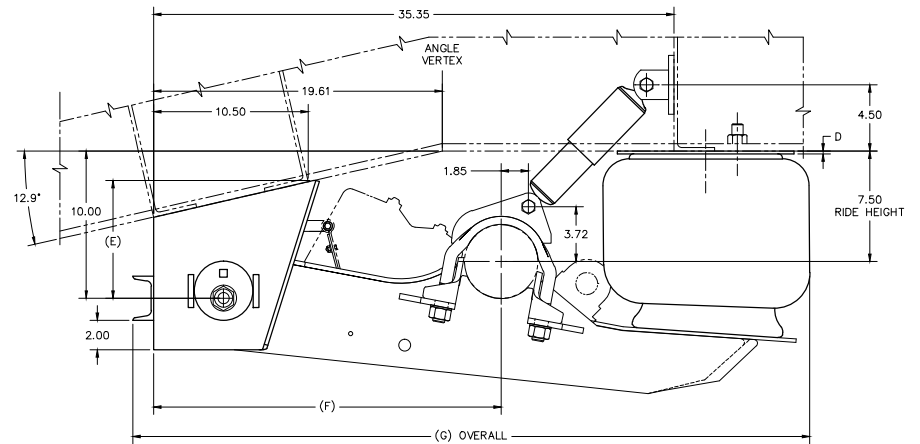


ROTATED STRUCTURE MOUNTING INFORMATION

This Print remains the property of Hendrickson. All information contained thereon is confidential. It is loaned, subject to return on demand and on express condition that it is not to be copied or used directly or indirectly for any purpose other than the purpose for which it has been loaned to you.



**STANDARD TRAVEL WELD-ON SELF STEER AXLE
W/ HIGH PRESSURE AIR SPRINGS AND EXTENDED BEAM
MOUNTING INFORMATION**



ANGLED STRUCTURE REMOTE SHOCK MOUNTING INFORMATION