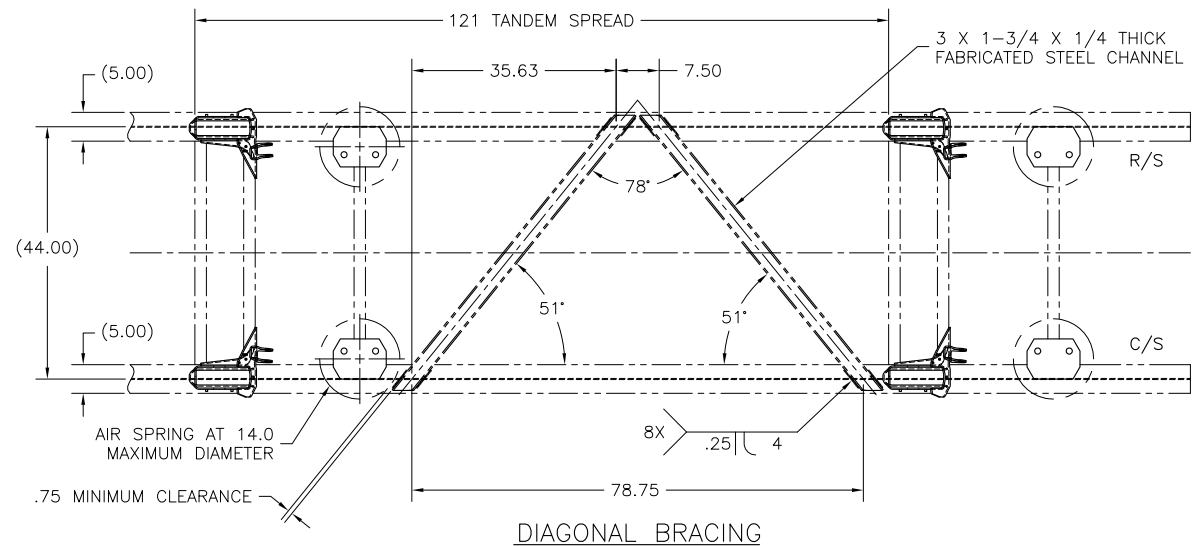


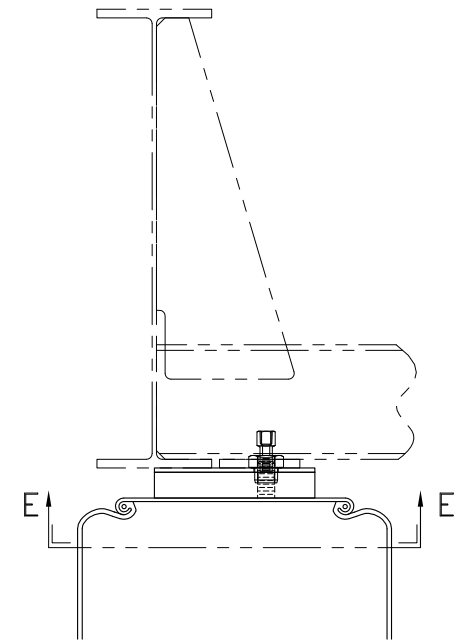
STRUCTURAL MOUNTING REQUIREMENTS:

1. FRAME CROSSMEMBER POSITIONED FOR LAPPED ATTACHMENT OF REAR WINGS OF FRAME BRACKETS (ALSO KNOWN AS "HANGERS" OR "TOWERS"). FRAME CROSSMEMBER ALIGNED WITH FRONT FACE OF FRAME BRACKETS IS GENERALLY REQUIRED.
2. LATERAL BRACING AT THE FRONT OF THE FRAME BRACKETS. THE RECOMMENDED METHOD IS A PAIR OF GUSSETS, LAPPING THE FRONT OF EACH FRAME BRACKET AND THE CROSSMEMBER, AS SHOWN IN SUSPENSION COMPONENTS VIEW. AN ALTERNATE METHOD, WHICH MAY BE ADEQUATE IN CERTAIN APPLICATIONS IF REQUIRED, IS TO USE A CROSSMEMBER (FOR EXAMPLE, A FABRICATED CHANNEL 3/16" THICK AND AT LEAST 4-1/2" DEEP, WITH 1-1/2" FLANGES FACING FORWARD) LAPPING THE FRONT SURFACES OF THE FRAME BRACKETS.
3. AIR SPRING PLATE ATTACHMENTS ADEQUATE TO SUPPORT A STATIC VERTICAL LOAD OF 36,000 LB PER SIDE. CERTAIN TRAILER CONSTRUCTIONS MAY BE ABLE TO USE A CANTILEVERED AIR SPRING PLATE ATTACHMENT, AS THIS SUSPENSION MODEL DOES NOT REQUIRE A CROSSMEMBER FOR SHOCK ABSORBER ATTACHMENTS. IF A CROSSMEMBER IS NECESSARY ABOVE THE AIR SPRING ATTACHMENTS, THE PLATE MUST BE ATTACHED TO EITHER THE CROSSMEMBER OR THE FRAME RAIL, BUT NOT BOTH (AS SHOWN IN SECTION E-E).
4. RESISTANCE TO LONGITUDINAL FRAME PARALLELOGRAMMING IS NECESSARY FOR SUCCESSFUL SUSPENSION MOUNTING. AS THE SUSPENSION IS NOT DESIGNED TO RESIST OR COMPLY WITH PARALLELOGRAMMING, SOME TRAILERS HAVE THIS CHARACTERISTIC AS AN INHERENT PART OF THEIR DESIGN. OTHERS WILL NEED TO HAVE THIS RESISTANCE BUILT IN AS PART OF THE SUSPENSION MOUNTING, SUCH AS DIAGONAL BRACING BETWEEN THE SUSPENSIONS ON WIDESPREAD TANDEM APPLICATIONS (SEE DIAGONAL BRACING VIEW)



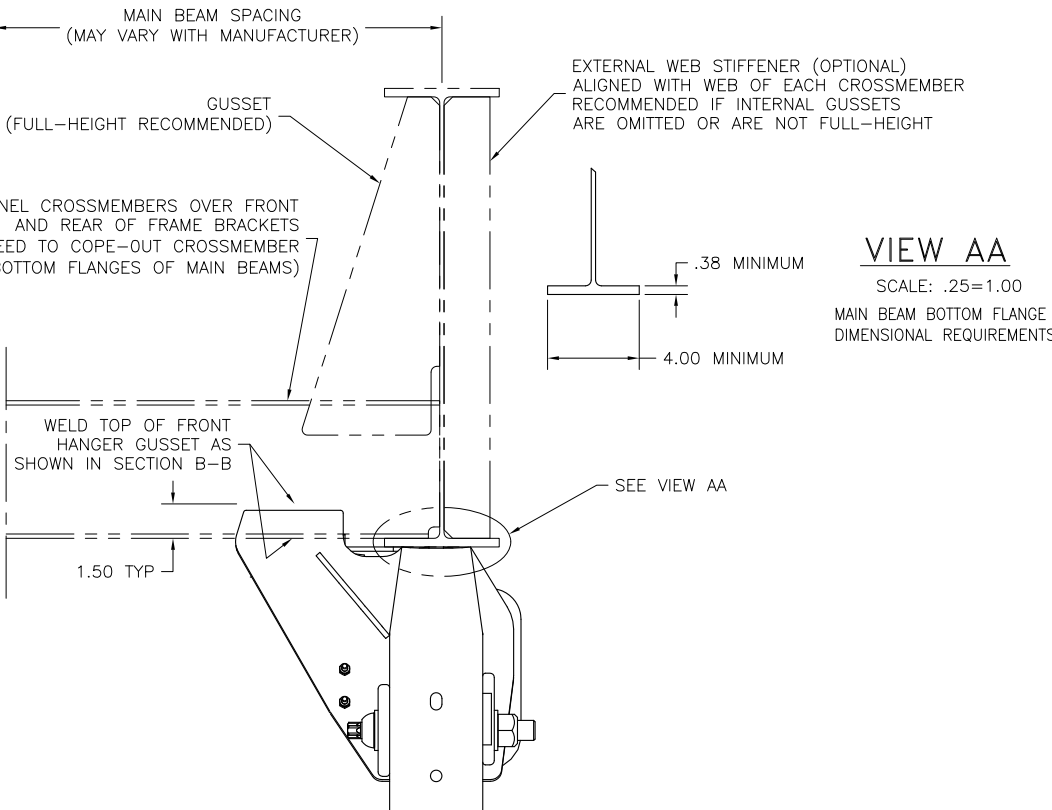
DIAGONAL BRACING

VIEW LOOKING UP FROM BOTTOM OF TRAILER
RECOMMENDED FOR 10' WIDESPREAD TANDEM INSTALLATIONS
TYPICAL INSTALLATION - SIMILAR FOR OTHER MAIN BEAM SPACINGS AND FLANGE WIDTHS



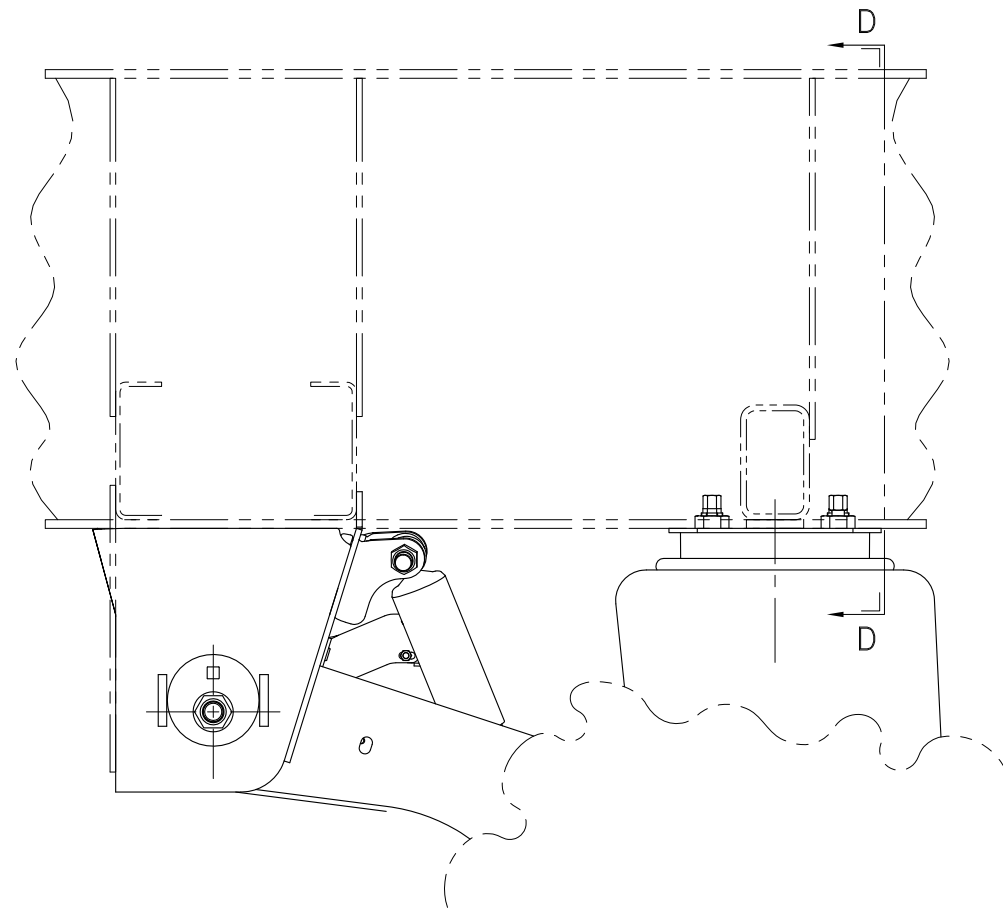
SECTION DD

SCALE: .25=1.00
TYP. 2 PLACES

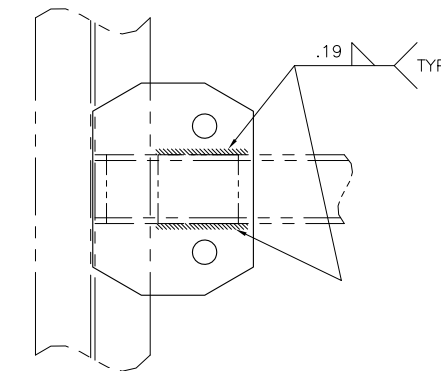


VIEW AA

SCALE: .25=1.00
MAIN BEAM BOTTOM FLANGE DIMENSIONAL REQUIREMENTS

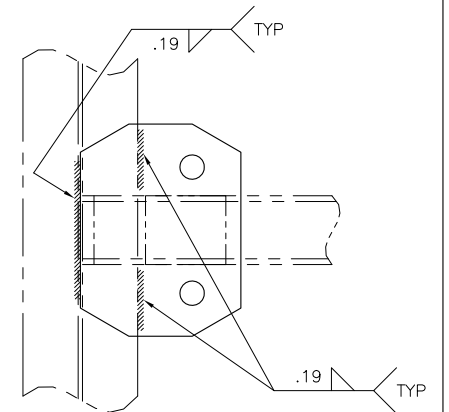


SUSPENSION COMPONENTS



SECTION EE-ALTERNATE

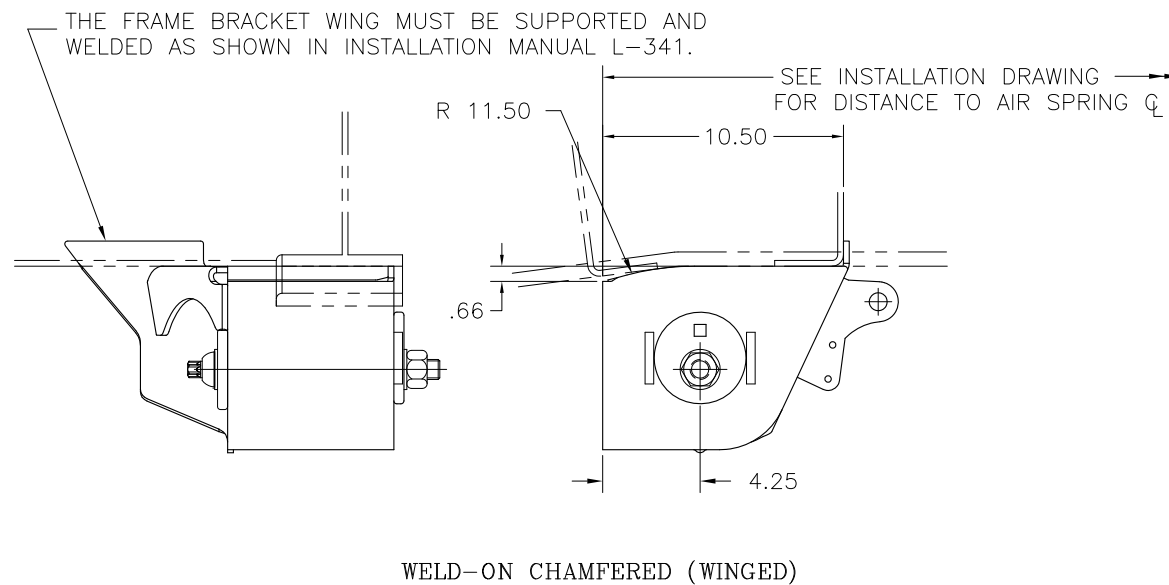
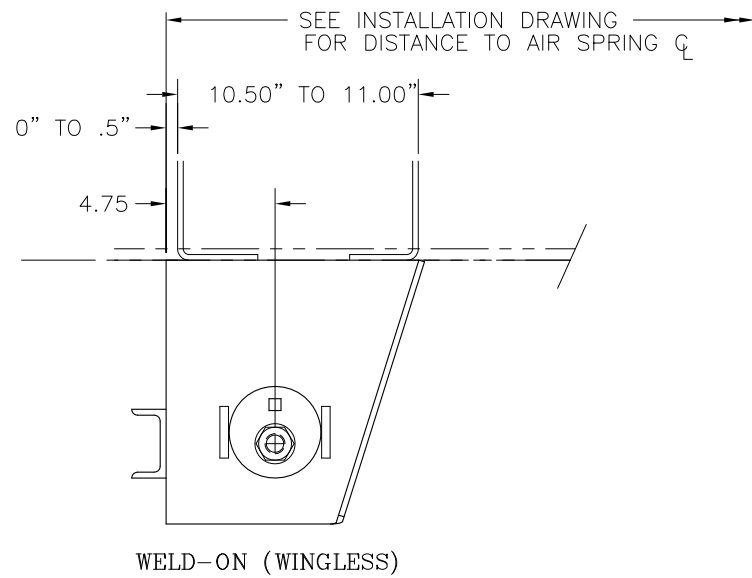
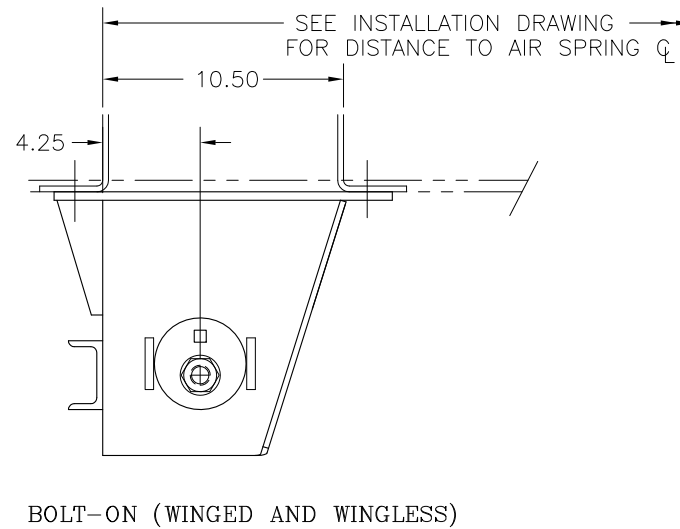
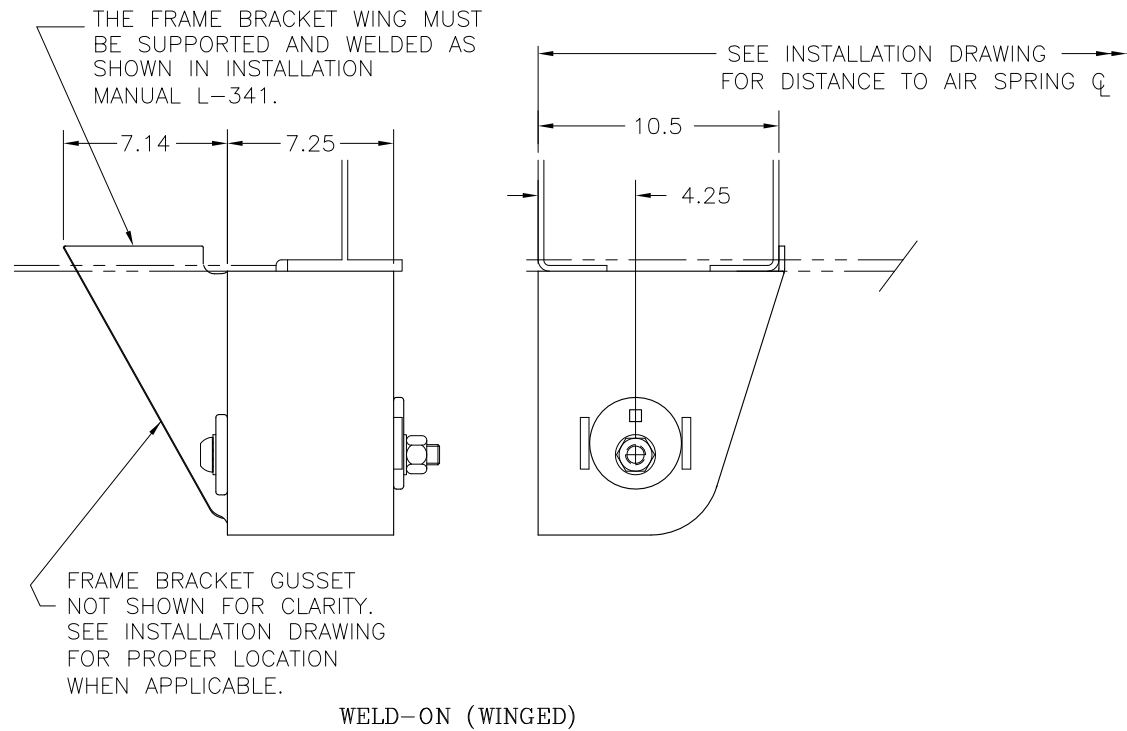
SCALE: .25=1.00
TYP. 2 PLACES
AIR SPRING AND SPACER OMITTED FOR CLARITY



SECTION EE

SCALE: .25=1.00
TYP. 2 PLACES
AIR SPRING AND SPACER OMITTED FOR CLARITY

This Print remains the property of Hendrickson. All information contained thereon is confidential. It is loaned, subject to return on demand and on express condition that it is not to be copied or used directly or indirectly for any purpose other than the purpose for which it has been loaned to you.



③

This Print remains the property of Hendrickson. All information contained thereon is confidential. It is loaned, subject to return on demand and on express condition that it is not to be copied or used directly or indirectly for any purpose other than the purpose for which it has been loaned to you.