

# **H** PARTS LIST

## HT250US UNDERSLUNG

LIT NO: L582

DATE: February 2017

REVISION: E

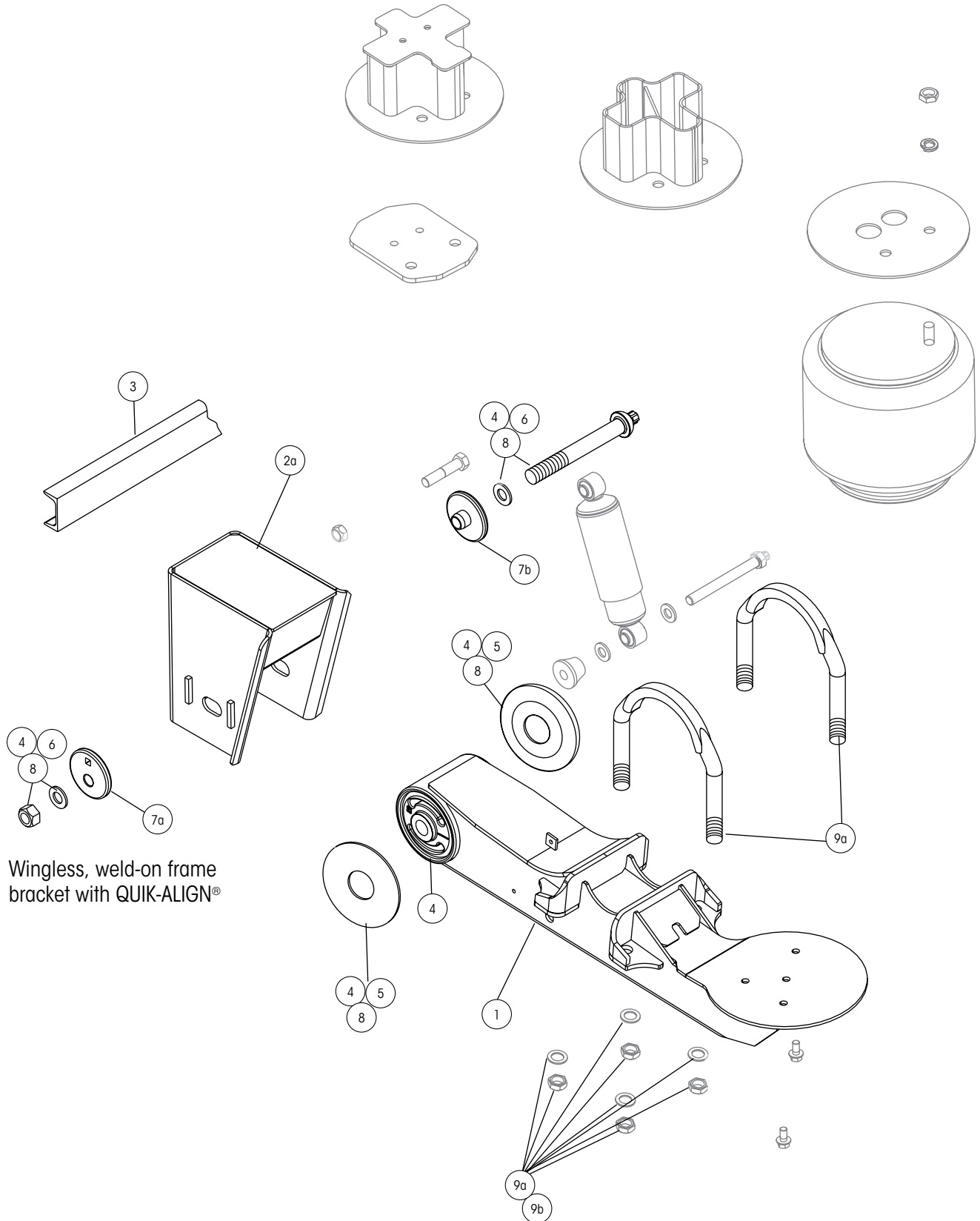
---



# HT250US UNDERSLUNG PARTS LIST



Picture shown may not resemble all models.



Wingless, weld-on frame bracket with QUIK-ALIGN®



# HT250US UNDERSLUNG PARTS LIST

ITEM	DESCRIPTION	PART NO.	QTY. PER SUSP.	NOTE
<b>1</b>	<b>BEAM ASSEMBLY</b>			
	Roadside	S-24186-1	1	All models
	Curbside	S-24186-2	1	All models
<b>2</b>	<b>FRAME BRACKET<sup>1</sup></b>			See L1266 Frame Bracket Parts List
<b>3</b>	<b>FRAME BRACKET C-CHANNEL</b>	A-1631-19	1	All models
<b>4</b>	<b>TRI-FUNCTIONAL® II BUSHING KIT<sup>2</sup></b>	S-24691	2	Includes bushing, bushing tube spacers, round head bolt, prevailing torque hex nut, hardened washers and lube
<b>5</b>	<b>BUSHING TUBE SPACER</b>	S-21099	4	All models
<b>6</b>	<b>QUIK-ALIGN® PIVOT BOLT KIT</b>	S-24679	2	Includes round head bolt, hardened washers and prevailing torque hex nut
<b>7</b>	<b>ALIGNMENT COLLARS</b>			
	<b>7a</b> Eccentric	S-20925	2	Alignment hole is off center
	<b>7b</b> Concentric	S-20924	2	Alignment hole is centered
<b>8</b>	<b>BUSHING TUBE SPACER KIT</b>	S-26369	2	Includes round head bolt, hardened washers, prevailing torque hex nut and bushing tube spacers
<b>9</b>	<b>U-BOLT KIT</b>			
	<b>9a</b> 19.5" or Larger Tires	S-21140/4	4	Includes (1) stepped U-bolt and hardware; axle spacer is not needed
	<b>9b</b> 17.5" Tires	S-22894/4	4	Includes (1) flattened U-bolt and hardware; axle spacer is needed with flattened U-bolt
<b>10</b>	<b>AXLE SPACER</b>	S-20701	4	Axle spacer is not needed with stepped U-Bolt. For use with flattened U-bolt only. Must order with 9b.

<sup>1</sup> Other options exist. Contact Hendrickson for assistance.

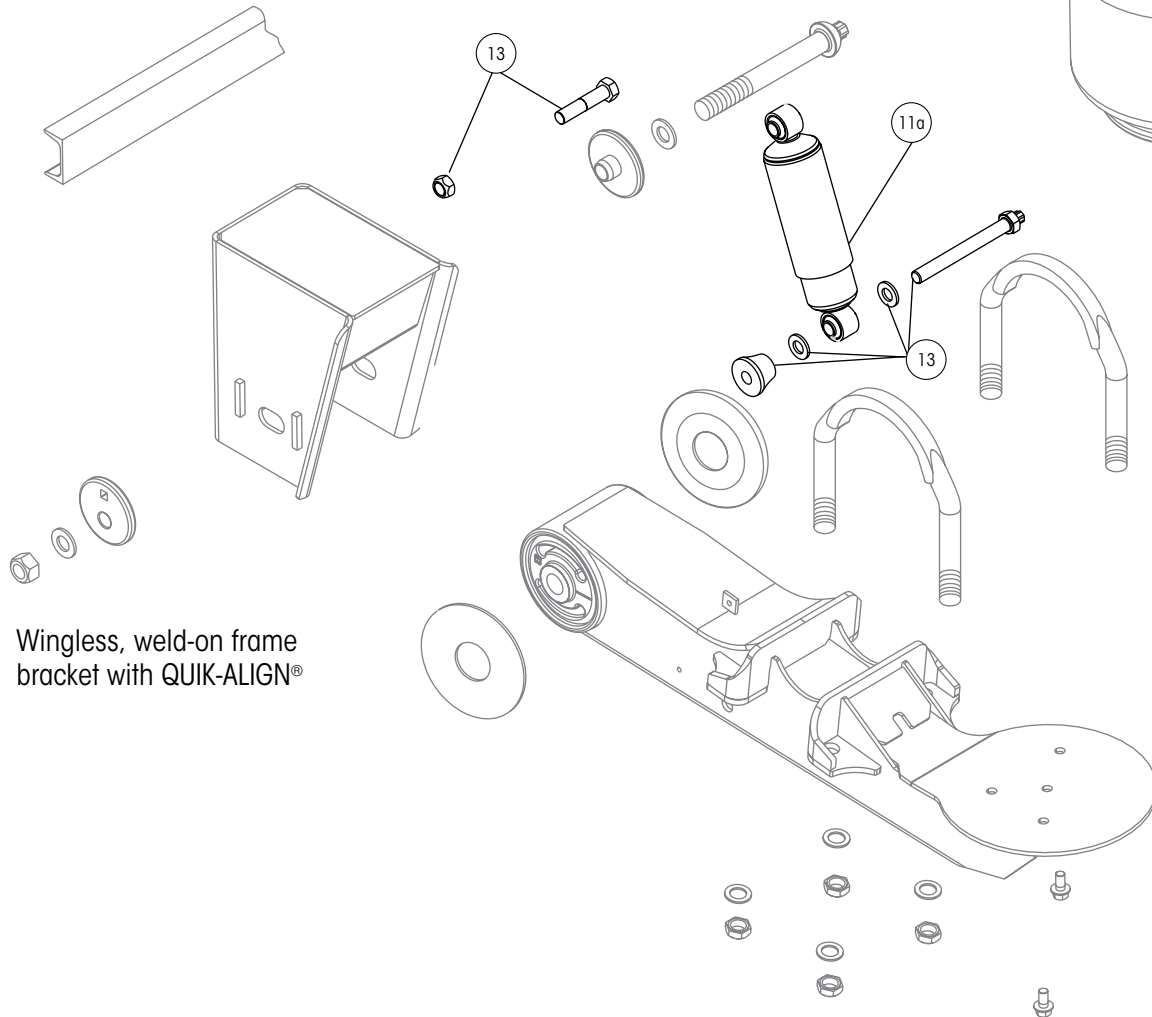
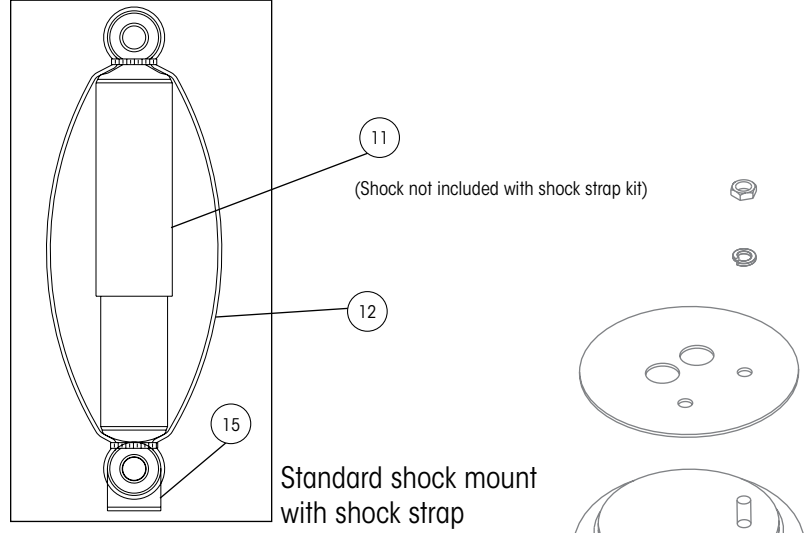
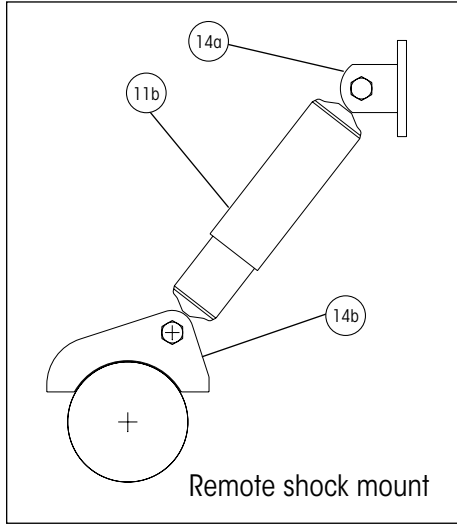
<sup>2</sup> Bushing tool S-21307 is required to correctly re-bush the suspension.

NOTE: Identification tag can be found on the front of the roadside frame bracket or the inside of the curbside beam.

# HT250US UNDERSLUNG PARTS LIST



Picture shown may not resemble all models.





# HT250US UNDERSLUNG PARTS LIST

11 & 12 SHOCK ABSORBERS AND SHOCK STRAP KITS				
DESCRIPTION	SHOCK PART NO. (11)	QTY PER SUSP.	SHOCK STRAP KIT NO. (12) <sup>3</sup>	QTY PER SUSP.
<b>a Standard Shock Mount</b>				
<b>Standard Travel</b>				
3.5" to 4" RH	S-23548	2	C-23086-11	1
5.5" to 6.5" RH	S-23650	2	C-23086-3	1
7.5" to 14" RH	S-23649	2	C-23086-5	1
<b>Standard Travel - High Damping</b>				
5.5" to 6.5" RH	S-23744	2	C-23086-10	1
7.5" to 14" RH	S-23743	2	C-23086-5	1
<b>Limited Jounce</b>				
6.5" to 12" RH	S-23649	2	C-23086-5	1
<b>Limited Jounce - High Damping</b>				
6.5" to 12" RH	S-23743	2	C-23086-5	1
<b>Extended Rebound</b>				
6.5" RH	S-23651	2	C-23086-4	1
<b>Extended Rebound - High Damping</b>				
6.5" RH	S-24579	2	C-23086-8	1
<b>b Remote Shock Mount <sup>4</sup></b>				
<b>Standard Travel</b>				
5.5" to 6.5" RH	S-23650	2	S-14587-9	1
7.5" to 9" RH	S-23649	2	S-14587-10	1
12" to 14" RH	S-2212	2	S-14587-3	1
<b>Standard Travel - High Damping</b>				
5.5" to 6.5" RH	S-23744	2	S-14587-11	1
7.5" to 9" RH	S-23743	2	S-14587-10	1
<b>Extended Rebound</b>				
6.5" to 9" RH	S-2212	2	S-14587-3	1
<b>Extended Rebound - High Damping</b>				
6.5" to 9" RH	S-23316	2	S-14587-3	1
<b>c Angled and Frame Clearance Mounting (Not Shown)</b>				
<b>Standard Travel</b>				
6.5", 7.5" and 14" RH	S-23651	2	N/A	1
<b>Standard Travel - High Damping</b>				
6.5", 7.5" and 14" RH	S-24579	2	N/A	1

ITEM	DESCRIPTION	PART NO.	QTY. PER SUSP.	NOTE
<b>13</b>	<b>SHOCK BOLT KIT</b>			(1) Shock bolt is required per shock
	Standard Shock Mount	S-24185/2	2	
	Remote Shock Mount	S-2157/2	2	
<b>14</b>	<b>REMOTE SHOCK MOUNT</b>			Also order shock bolt kit S-24024
	Upper Assembly	A-5431	2	
	Lower Assembly	S-2723	2	
<b>15</b>	<b>SHOCK STRAP CLEVIS</b>	B-20919	2	Only needed for standard shock mount Included in shock strap kit

3. Shock strap kits: includes (2) straps, (2) clevis and (4) nylon ties

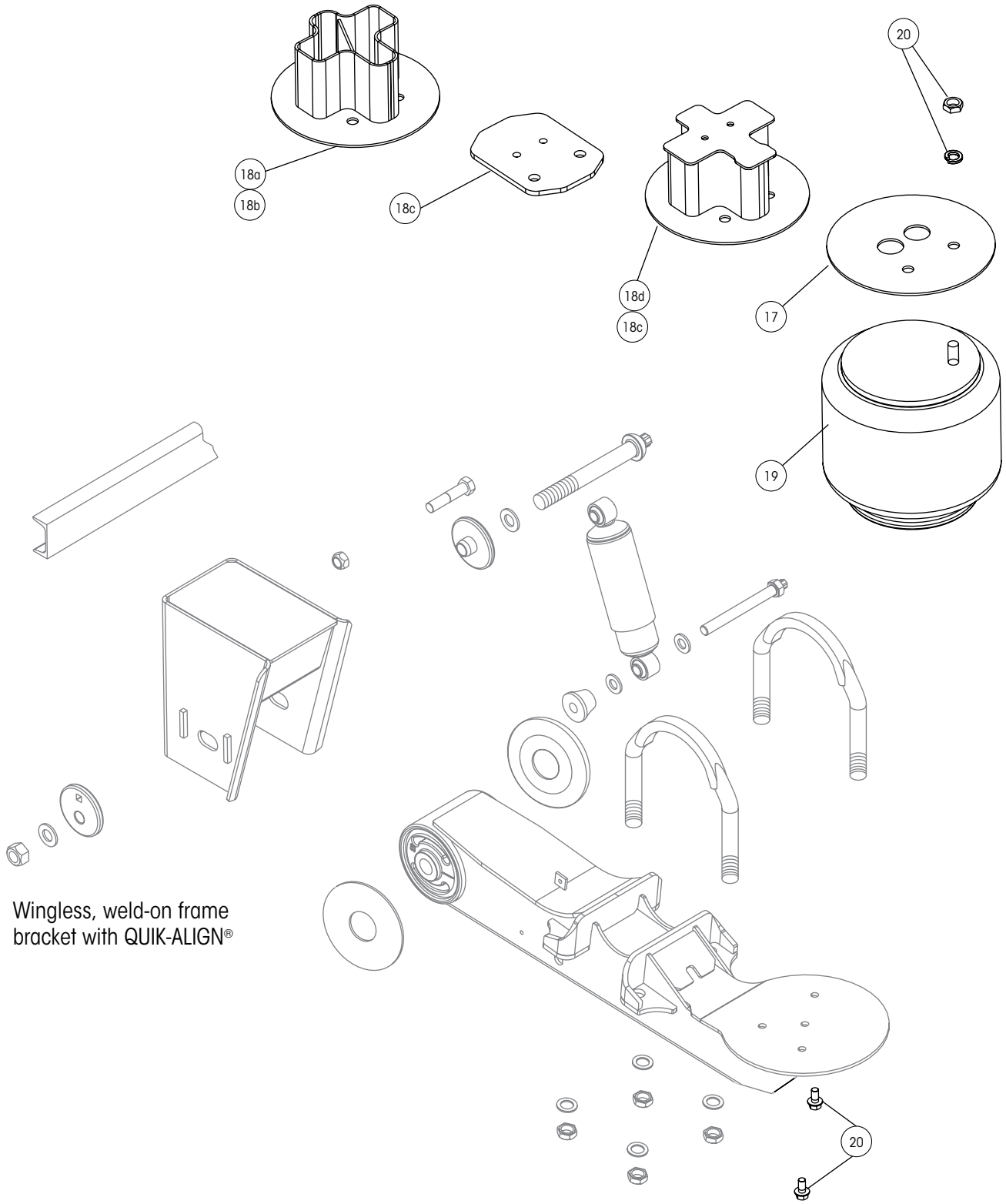
4. Shock strap clevis not included and not needed for remote shock mount

NOTE: Identification tag can be found on the front of the roadside frame bracket or the inside of the curbside beam.

# HT250US UNDERSLUNG PARTS LIST



Picture shown may not resemble all models.



Wingless, weld-on frame bracket with QUIK-ALIGN®



# HT250US UNDERSLUNG PARTS LIST

ITEM	DESCRIPTION	PART NO.	QTY. PER SUSP.	NOTE
16	UPPER SHOCK CLEVIS (Not Shown)	S-2592	2	3.5" and 4" RH only
17	AIR SPRING MOUNTING PLATE			Air spring mounting plates fit standard and rotated mounting types
	<b>Weld-on, Angled and Frame Clearance</b>			
	3.5" to 14" RH	S-21209	2	
	<b>Bolt-on</b>			
	5.5" to 9" RH, Standard Travel	B-21211	2	
18	AIR SPRING SPACER ASSEMBLY <sup>5</sup>			Air spring spacers fit standard and rotated air spring mounting types. Includes air spring plate and spacer assembly.
	<b>18a Weld-on, Standard Travel</b>			
	12" RH	C-21210-3	2	With 3" spacer with top plate
	14" RH	C-21210-5	2	With 5" spacer with top plate
	<b>18b Weld-on, Limited Jounce</b>			
	6.5" and 7.5" RH	C-21210-1	2	With 1" spacer with top plate
	9" RH	C-21210-3	2	With 3" spacer with top plate
	12" RH	C-21210-5	2	With 5" spacer with top plate. Also on frame angled and frame clearance 14" RH
	<b>18c Bolt-on, Standard Travel</b>			
	12" RH	C-21215-3	2	With 3.2" spacer with top plate
	14" RH	C-21215-5	2	With 5.2" spacer with top plate
	<b>18d Bolt-on, Limited Jounce</b>			
	6.5" and 7.5" RH	C-21215-1	2	With 1.2" spacer with top plate
	9" RH	C-21215-3	2	With 3.2" spacer with top plate
	12" RH	C-21215-5	2	With 5.2" spacer with top plate
19	AIR SPRING			
	<b>Standard Mount</b>			
	4" RH	S-20010	2	
	3.5" and 4" RH, High Pressure	S-20223	2	
	5.5" to 14" RH	S-20127	2	
	6.5" RH, High Pressure, Short Bellows	S-20716	2	
	7.5" to 14" RH, High Pressure	S-20124	2	
	<b>Rotated Mount</b>			
	5.5" to 14" RH	S-20414	2	
	7.5" to 14" RH, High Pressure	S-20413	2	
20	AIR SPRING MOUNTING KIT	S-20033/2		Order 1 kit per air spring

5. Other options exist. Contact your customer service representative for specific model numbers.

NOTE: Identification tag can be found on the front of the roadside frame bracket or the inside of the curbside beam.







Call your trailer dealer or Hendrickson at **330.489.0045** or **866.RIDEAIR (743.3247)** for additional information.



[www.hendrickson-intl.com](http://www.hendrickson-intl.com)

**TRAILER COMMERCIAL VEHICLE SYSTEMS**

2070 Industrial Place SE  
Canton, OH 44707-2641 USA  
866.RIDEAIR (743.3247)  
330.489.0045 • Fax 800.696.4416

**Hendrickson Canada**

250 Chrysler Drive, Unit #3  
Brampton, ON Canada L6S 6B6  
800.668.5360  
905.789.1030 • Fax 905.789.1033

**Hendrickson Mexicana**

Circuito El Marqués Sur #29  
Parque Industrial El Marqués  
Pob. El Colorado, Municipio El Marqués,  
Querétaro, México C.P. 76246  
+52 (442) 296.3600 • Fax +52 (442) 296.3601