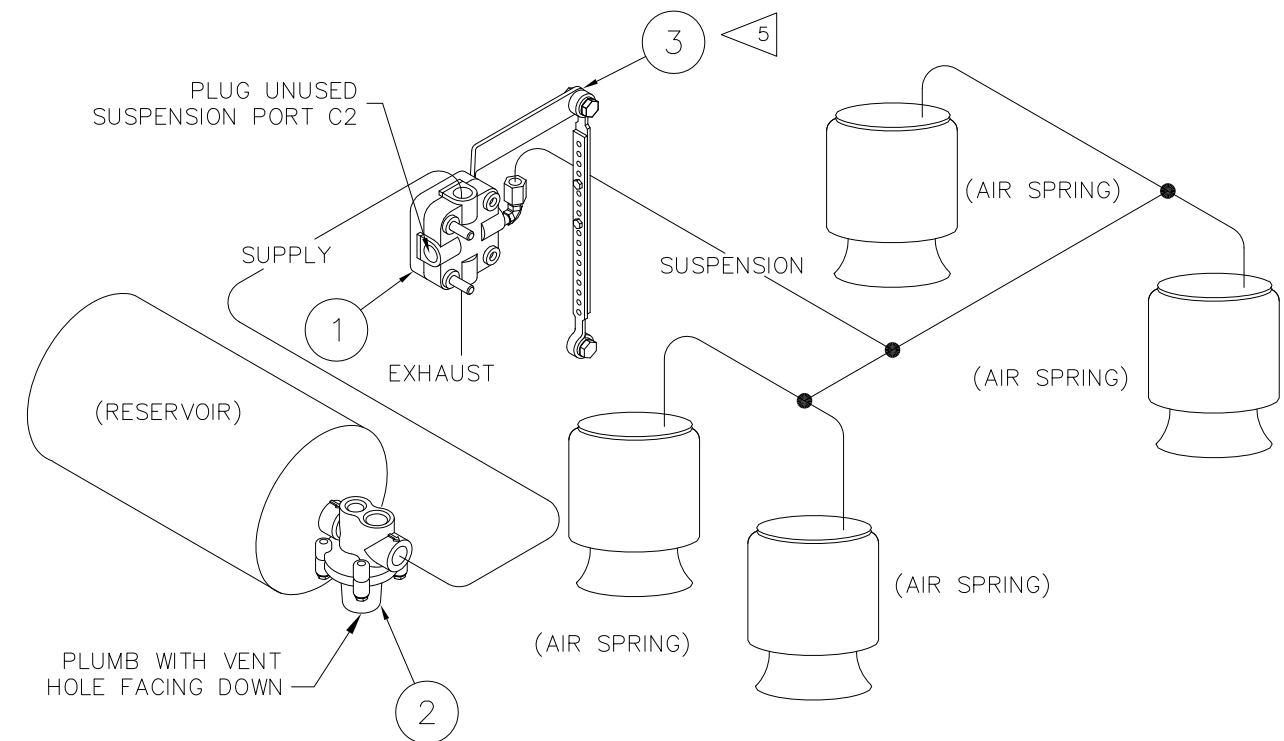
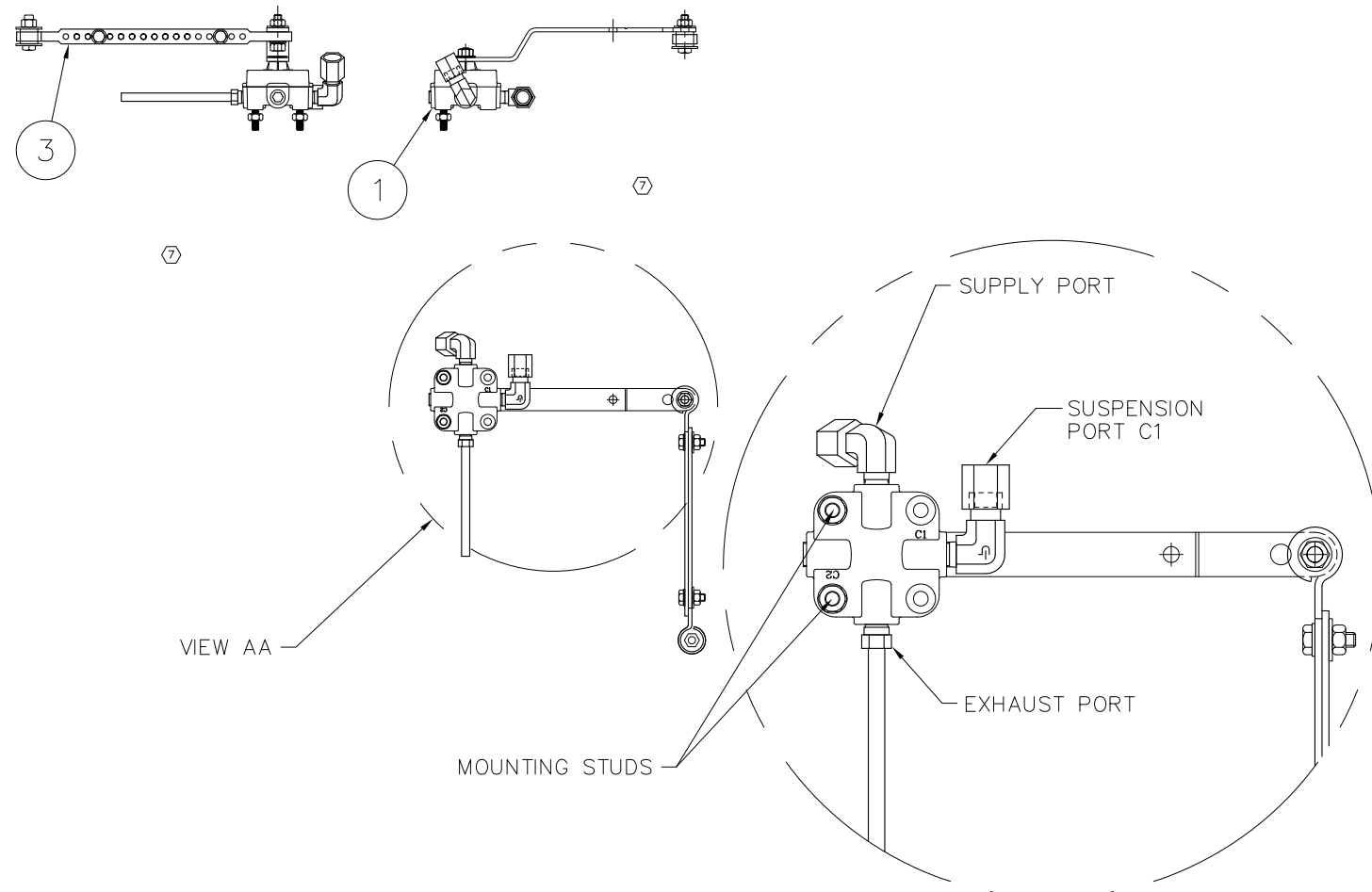


This Print remains the property of Hendrickson. All information contained thereon is confidential. It is loaned, subject to return on demand and on express condition that it is not to be copied or used directly or indirectly for any purpose other than the purpose for which it has been loaned to you.

HCV WITHOUT DUMP			AKH-239-3
ITEM	PART NO.	DESCRIPTION	QTY.
⑦ 1	A-28651	HCV - VALVE ONLY	1
2	A-1128	PRESSURE PROTECTION VALVE	1
3	A-14187	LINK ASSEMBLY - BOLTED	1
*4	L-668	INSTALLATION INSTRUCTIONS	1
*5	DWG C-25071	NON DELAY HCV KIT FOR T MODEL SUSPENSIONS	1
⑦ *6	A-29870	HCV SUB-KIT (#1)	1
* NOT SHOWN			WEIGHT: 1.96 ⑦



NOTES:

- DO NOT ADD LUBRICATION TO AIR SYSTEM.
- ALL CONNECTIONS MUST BE LEAK PROOF.
- AVOID BENDS IN AIR LINES.
- AIR LINE FITTINGS AND LINES TO BE FURNISHED BY INSTALLER. 3/8" O.D. POLYIMIDE TUBING RECOMMENDED.
- ⑤ TRIM & BOLT LINKS AS REQ'D TO HOLD HEIGHT CONTROL VALVE IN NEUTRAL POSITION WHEN SUSPENSION IS AT RIDE HEIGHT.
- DO NOT OVER TIGHTEN LINK MOUNTING BOLTS. THE LINK SHOULD PIVOT FREELY ABOUT THE BOLT. THE LINK, WHEN PROPERLY INSTALLED, SHOULD APPEAR VERTICAL WHEN VIEWING IT FROM THE FRONT OF THE SUSPENSION.
- TO MAKE FINE ADJUSTMENTS IN RIDE HEIGHT LOOSEN MOUNTING NUTS AND ROTATE VALVE BODY.
- ALL ITEMS SHIPPED UNASSEMBLED. FITTINGS, NUTS AND BOLTS TO BE PLACED IN A PLASTIC BAG.

OPERATION:

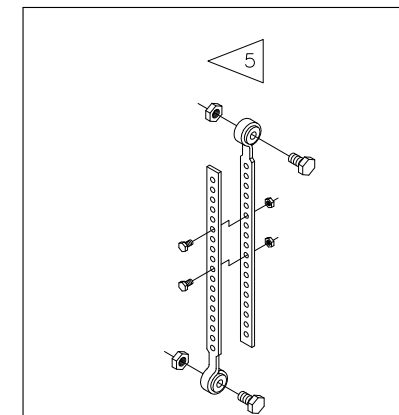
VALVE ARM HORIZONTAL
FRAME IS AT PRESET HEIGHT
NO AIR FLOW OCCURRING.

VALVE ARM DOWN
FRAME IS HIGH, AIR SPRINGS
ARE EXHAUSTED UNTIL ARM
IS HORIZONTAL.

VALVE ARM UP
FRAME IS LOW, AIR SPRINGS
ARE INFLATED UNTIL ARM
IS HORIZONTAL.

FUNCTION:

AUTOMATIC HEIGHT CONTROL.



2070 INDUSTRIAL PLACE S.E. CANTON, OH 44707-2600 U.S.A.

UNLESS OTHERWISE NOTED: TOLERANCES ARE: X: ± .1 XX: ± .06 XXX: ± .030 ANGULAR: ± 0.5°	DIMENSIONS ARE: INCHES: 7 16040 6 15594 5 13023 4 12364	PSO 10-12-07 CDR 6/5/07 CDR 2/25/04 CDR 4-25-03	REV. ECN NO. BY DATE	DRAWN BY L. WILSON DATE 4-29-99	CHK'D BY 5-25-99 G. SHENKLE	APP'D BY J. CERVANTEZ	THIS DRAWING IS THE CONFIDENTIAL PROPERTY OF HENDRICKSON
--	--	--	----------------------	---------------------------------	-----------------------------	-----------------------	--

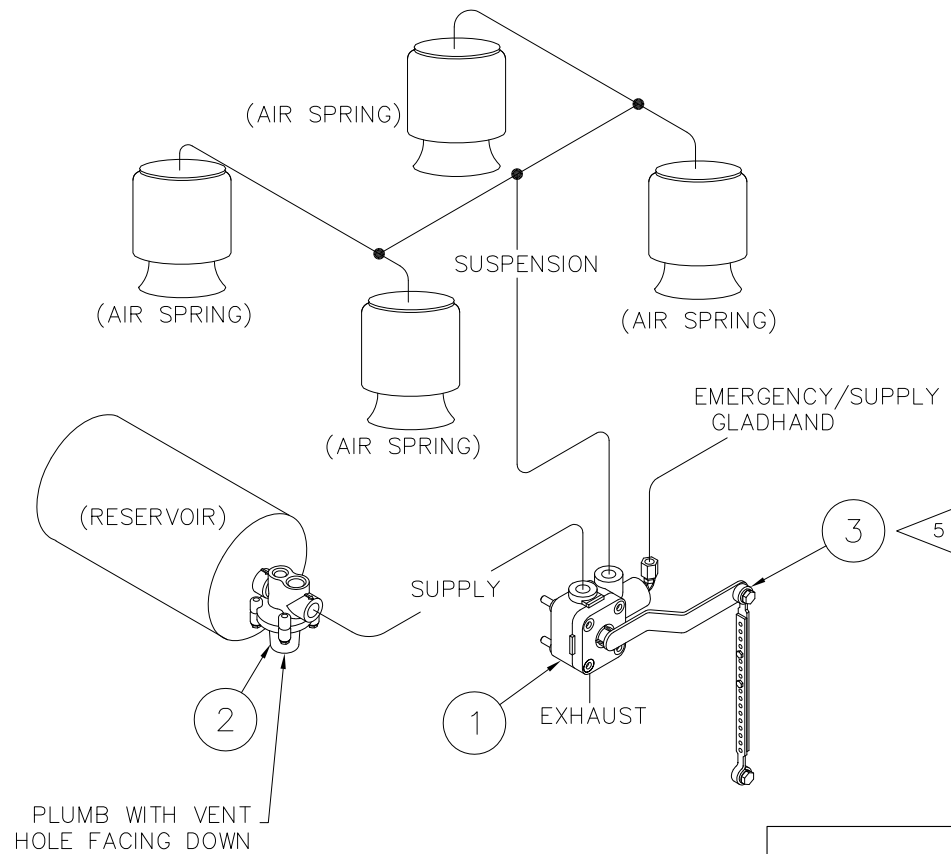
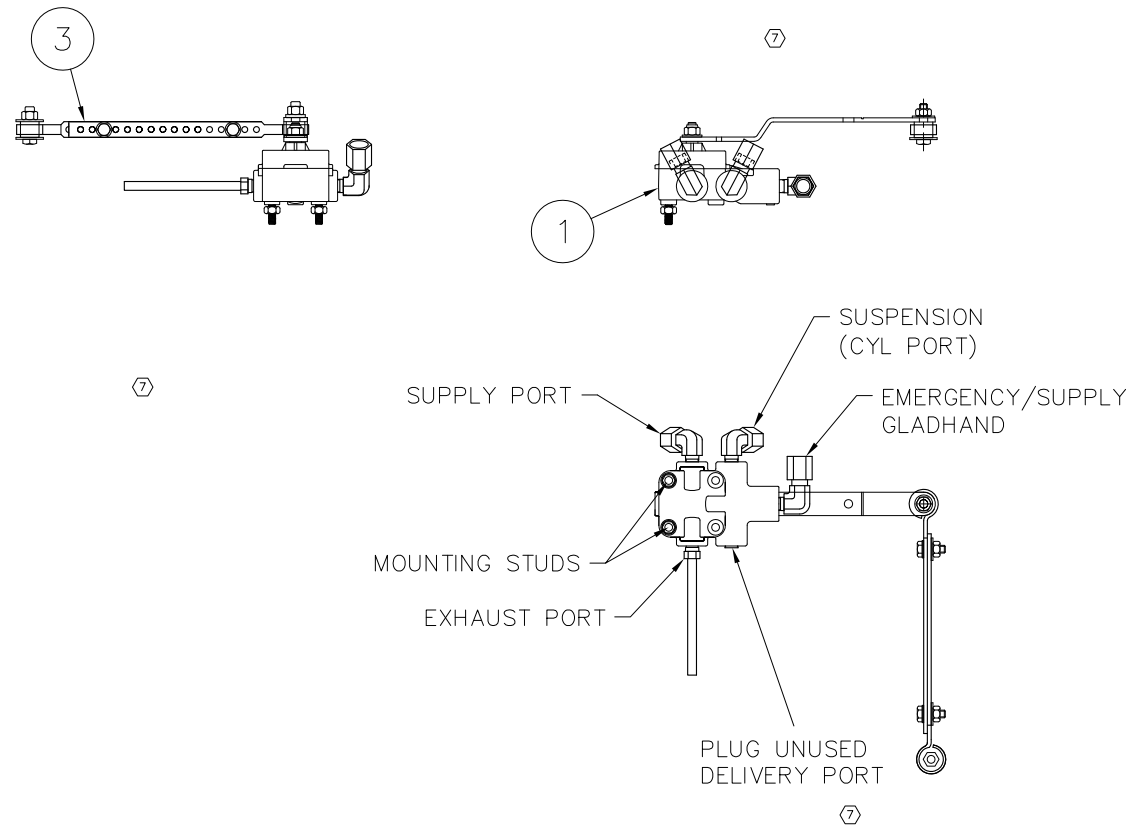
NON DELAY HCV KIT FOR T MODEL SUSPENSIONS

SCALE .25=1.00 (SIZE)
PAGE 1 OF 3
DRAWING No.

C-25071

This Print remains the property of Hendrickson. All information contained thereon is confidential. It is loaned, subject to return on demand and on express condition that it is not to be copied or used directly or indirectly for any purpose other than the purpose for which it has been loaned to you.

HCV WITH DUMP			AKHD-239-3
ITEM	PART NO.	DESCRIPTION	QTY.
⑦ 1	A-29391	HCV W/DUMP	1
2	A-1128	PRESSURE PROTECTION VALVE	1
3	A-14187	LINK ASSEMBLY - BOLTED	1
*4	L-373	CAUTION STICKER	1
*5	DWG C-25071	NON DELAY HCV KIT FOR T MODEL SUSPENSIONS	1
*6	L-668	INSTALLATION INSTRUCTIONS	1
⑦ *7	A-29871	HCV SUB-KIT (#2)	1
⑦ *8	A-29874	HCV SUB-KIT (#5)	1
* NOT SHOWN			WEIGHT: 2.40 ⑦



NOTES:

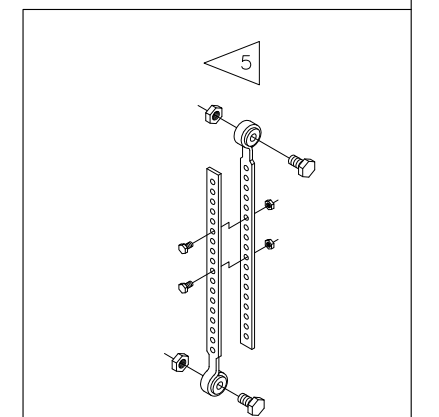
- DO NOT ADD LUBRICATION TO AIR SYSTEM.
- ALL CONNECTIONS MUST BE LEAK PROOF.
- AVOID BENDS IN AIR LINES.
- AIR LINE FITTINGS AND LINES TO BE FURNISHED BY INSTALLER. 3/8" O.D. POLYIMIDE TUBING RECOMMENDED.
- ⑤ TRIM & BOLT LINKS AS REQ'D TO HOLD HEIGHT CONTROL VALVE IN NEUTRAL POSITION WHEN SUSPENSION IS AT RIDE HEIGHT.
- DO NOT OVER TIGHTEN LINK MOUNTING BOLTS. THE LINK SHOULD PIVOT FREELY ABOUT THE BOLT. THE LINK, WHEN PROPERLY INSTALLED, SHOULD APPEAR VERTICAL WHEN VIEWING IT FROM THE FRONT OF THE SUSPENSION.
- TO MAKE FINE ADJUSTMENTS IN RIDE HEIGHT LOOSEN MOUNTING NUTS AND ROTATE VALVE BODY.
- ALL ITEMS SHIPPED UNASSEMBLED. FITTINGS, NUTS AND BOLTS TO BE PLACED IN A PLASTIC BAG.

OPERATION:

- VALVE ARM HORIZONTAL
FRAME IS AT PRESET HEIGHT
NO AIR FLOW OCCURRING.
- VALVE ARM DOWN
FRAME IS HIGH, AIR SPRINGS
ARE EXHAUSTED UNTIL ARM
IS HORIZONTAL.
- VALVE ARM UP
FRAME IS LOW, AIR SPRINGS
ARE INFLATED UNTIL ARM
IS HORIZONTAL.

FUNCTION:

AUTOMATIC HEIGHT CONTROL.
AUTOMATIC SUSPENSION DUMP.



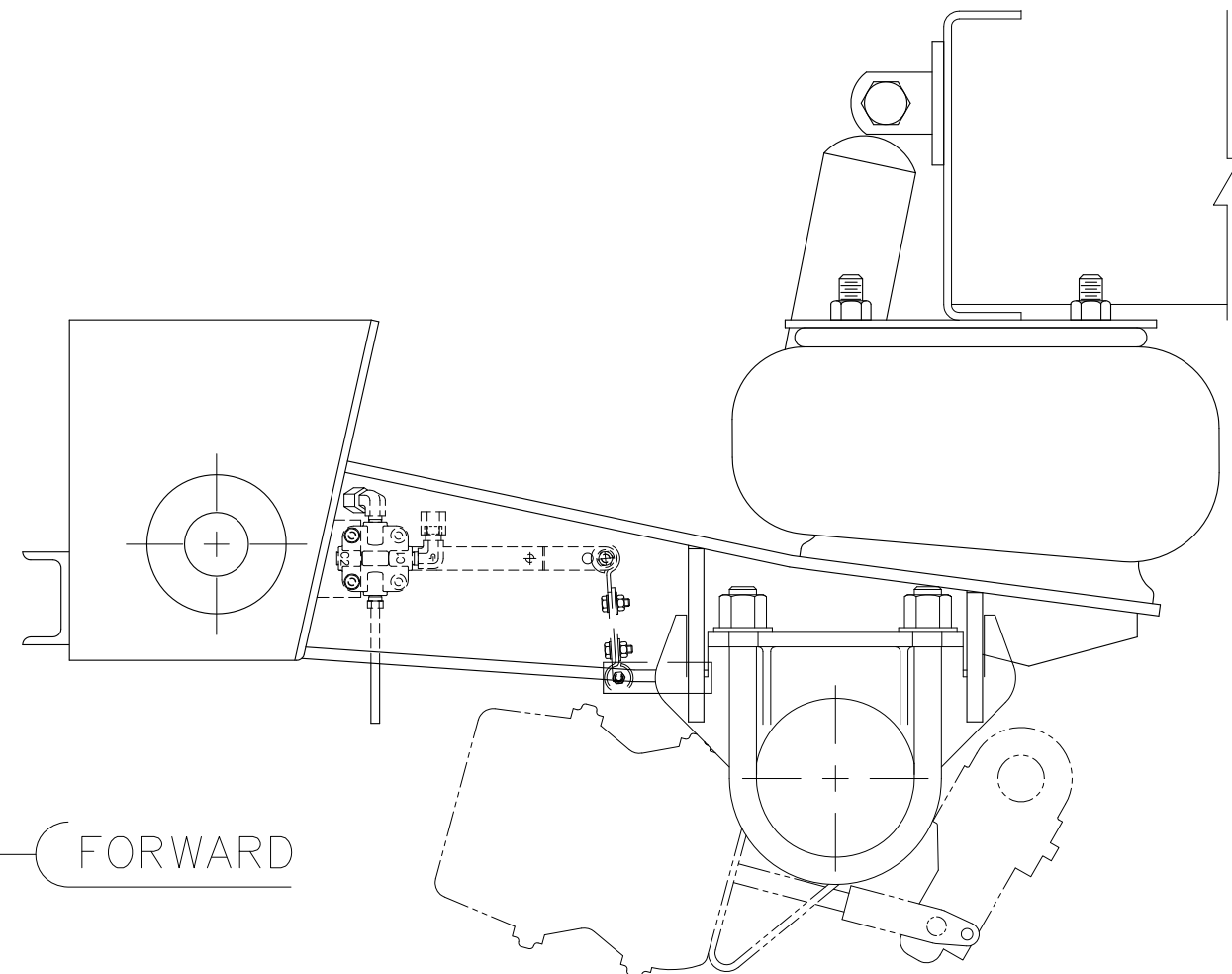
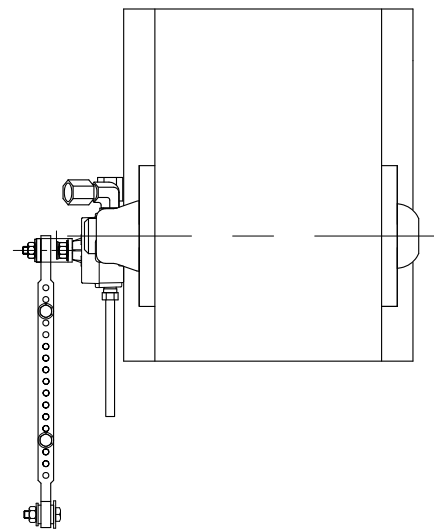
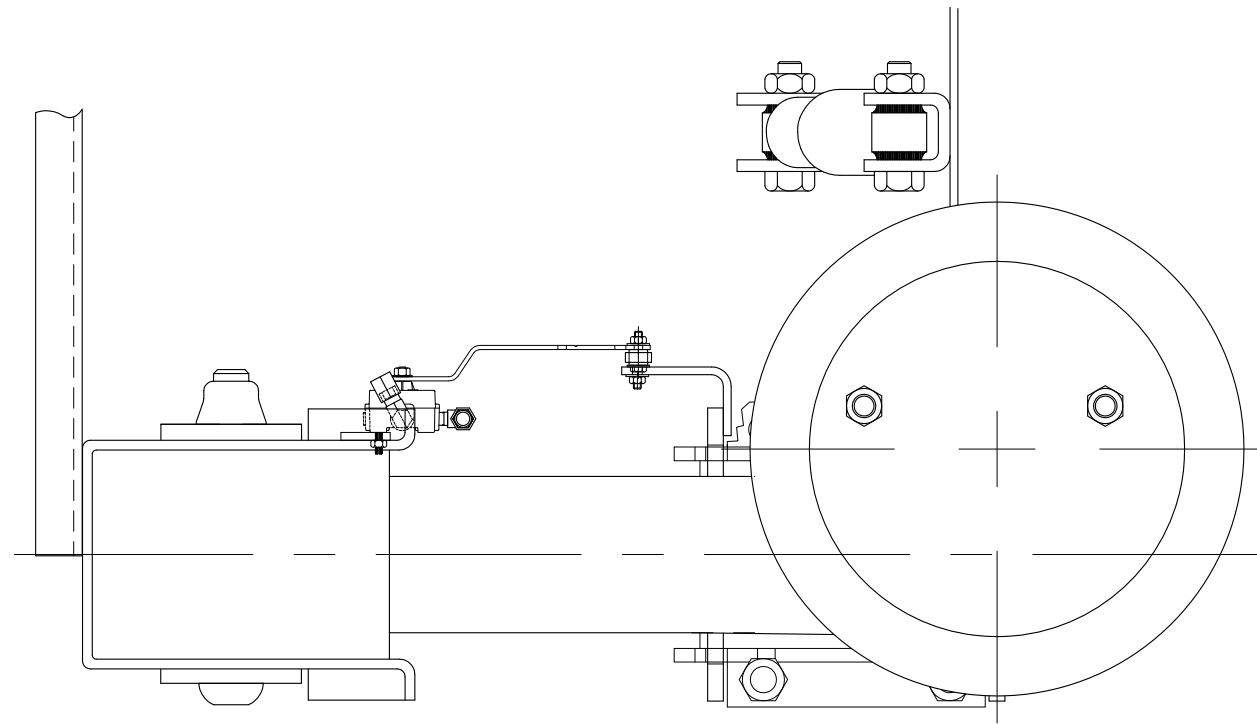
2070 INDUSTRIAL PLACE S.E. CANTON, OH 44707-2600 U.S.A.

UNLESS OTHERWISE NOTED: TOLERANCES ARE		7	16040	PSO	10-12-07	DRAWN BY	L. WILSON	DATE	4-29-99
DIMENSIONS ARE:		6	15594	CDR	6/5/07	CHK'D BY	5-25-99 G. SHENKLE	THIS DRAWING IS THE CONFIDENTIAL PROPERTY OF HENDRICKSON	
X: ± .1		5	13023	CDR	2/25/04	APP'D BY	J. CERVANTEZ		
.XX: ± .06		4	12364	CDR	4-25-03				
.XXX: ± .030									
ANGULAR: ± 0.5°									
3RD ANGLE PROJECTION									
DIMENSIONS ADHERE TO ANSI Y14.5M-1982		REV.	ECN NO.	BY	DATE				

NON DELAY HCV KIT FOR
T MODEL SUSPENSIONS

SCALE	PAGE
.25=1.00	2 OF 3
(SIZE)	DRAWING No.
C-25071	

This Print remains the property of Hendrickson. All information contained thereon is confidential. It is loaned, subject to return on demand and on express condition that it is not to be copied or used directly or indirectly for any purpose other than the purpose for which it has been loaned to you.



2070 INDUSTRIAL PLACE S.E. CANTON, OH 44707-2600 U.S.A.

UNLESS OTHERWISE NOTED: TOLERANCES ARE:		7	16040	PSO	10-12-07	DRN'D BY	L. WILSON	DATE	4-29-99
X: ± .1		6	15594	CDR	6/5/07	CHK'D BY	5-25-99 G. SHENKLE	THIS DRAWING IS THE CONFIDENTIAL PROPERTY OF HENDRICKSON	
.XX: ± .06		5	13023	CDR	2/25/04	APP'D BY	J. CERVANTEZ		
.XXX: ± .030		4	12364	CDR	4-25-03				
ANGULAR: ± 0.5°									
DIMENSIONS ADHERE TO ANSI Y14.5M-1982		REV.	ECN NO.	BY	DATE				

NON DELAY HCV KIT FOR T MODEL SUSPENSIONS

SCALE	PAGE
.25=1.00 (SIZE)	3 OF 3 DRAWING No.
C-25071	